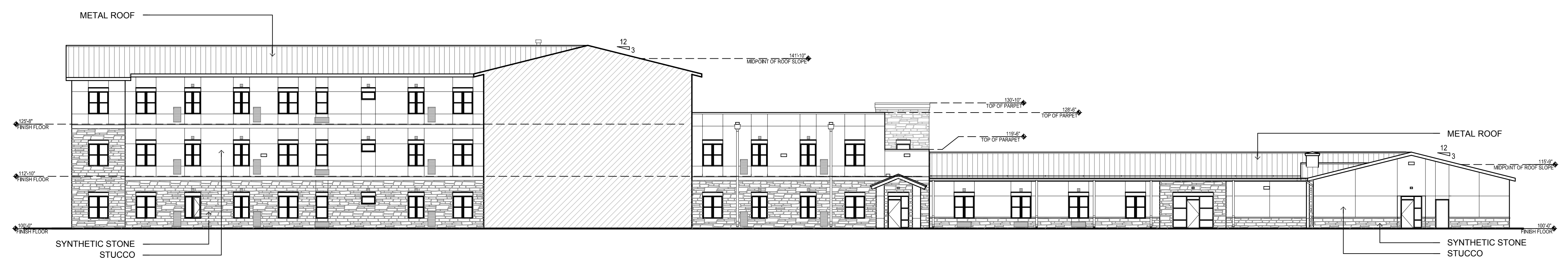
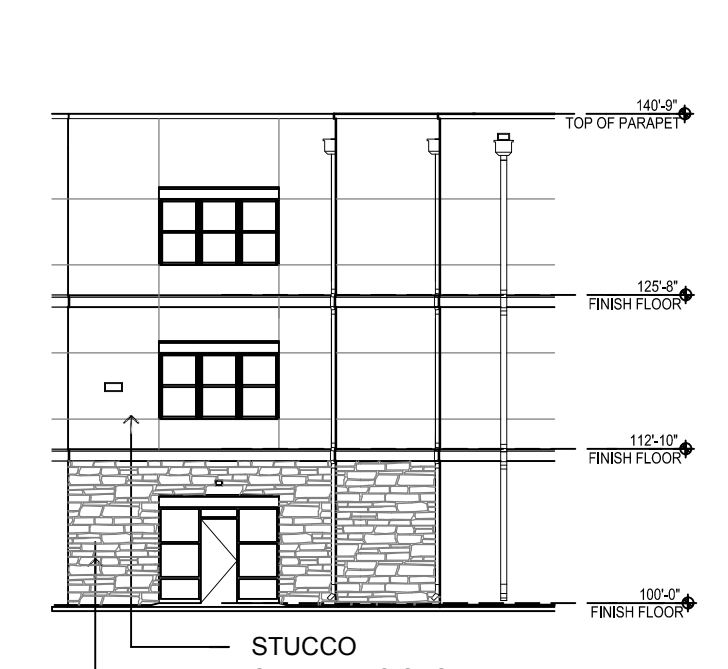


GENERAL NOTES

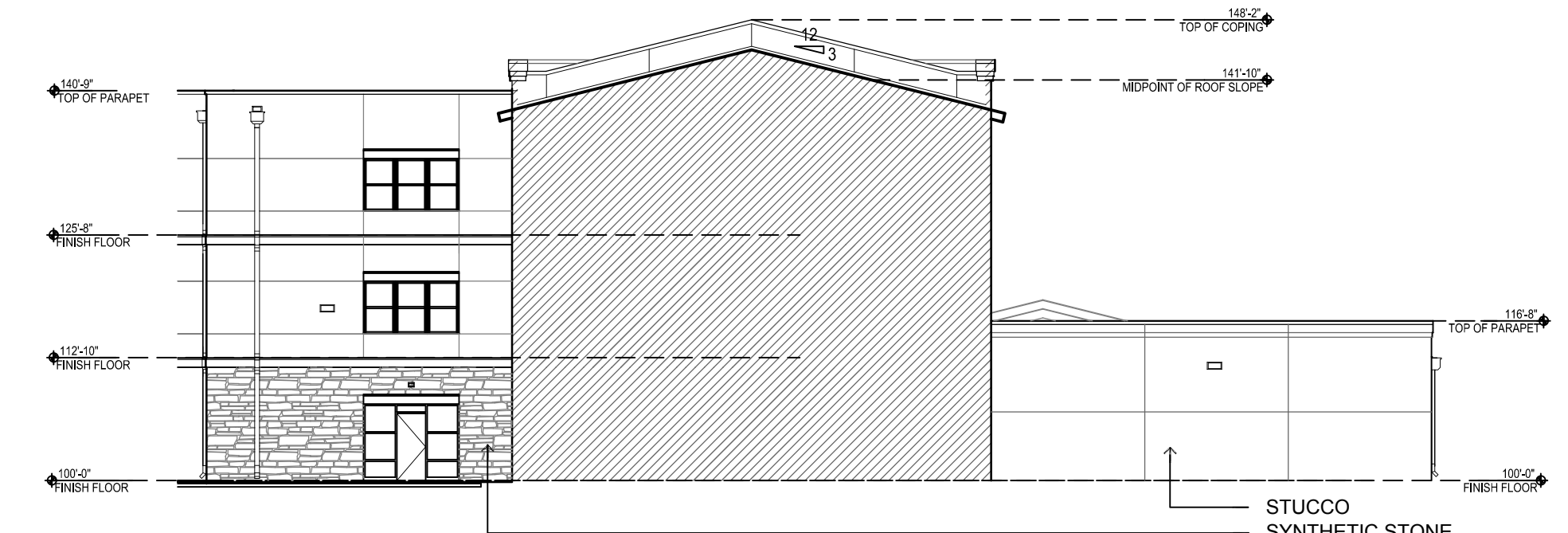
1. AVERAGE FINISH GRADE AT APPROXIMATELY 6" BELOW FINISH FLOOR ELEVATION
2. SYNTHETIC STONE TOTALS APPROXIMATELY 35% COVERAGE



D1 BUILDING C-1 & C-2 - EAST ELEVATION
1/16" = 1'-0"
STUCCO COVERAGE: APPROX. 4,025 S.F.
SYNTHETIC STONE COVERAGE: APPROX. 2,194 S.F.



C1 BUILDING B - WEST ELEVATION
1/16" = 1'-0"
STUCCO COVERAGE: APPROX. 882 S.F.
SYNTHETIC STONE COVERAGE: APPROX. 334 S.F.



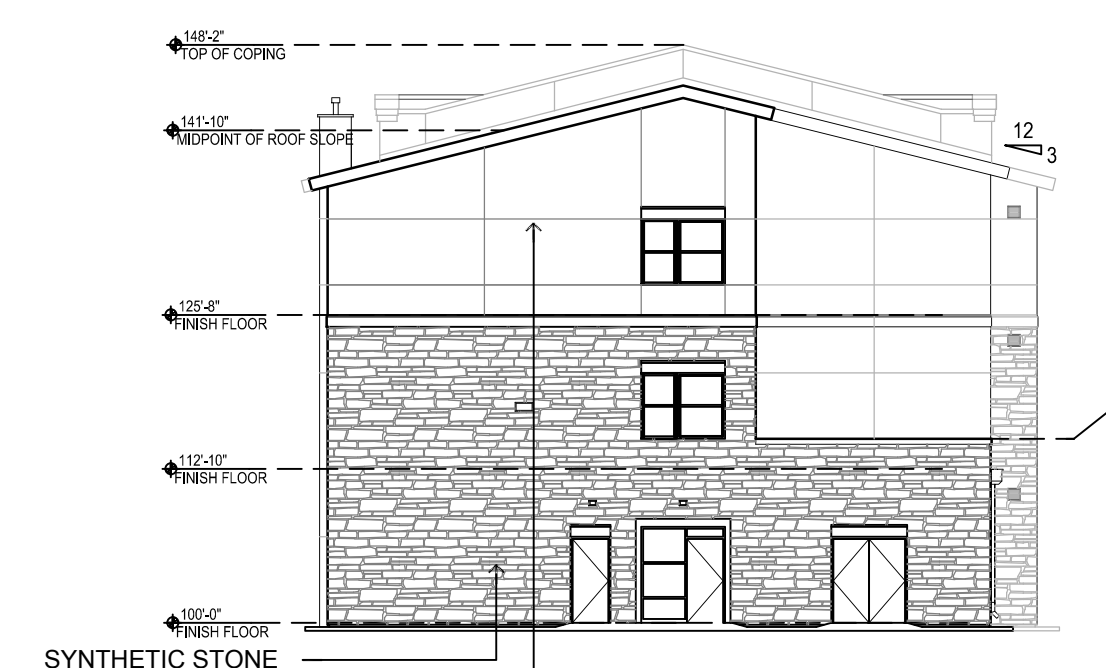
C2 BUILDING B - WEST ELEVATION
1/16" = 1'-0"
STUCCO COVERAGE: APPROX. 1,561 S.F.
SYNTHETIC STONE COVERAGE: APPROX. 292 S.F.



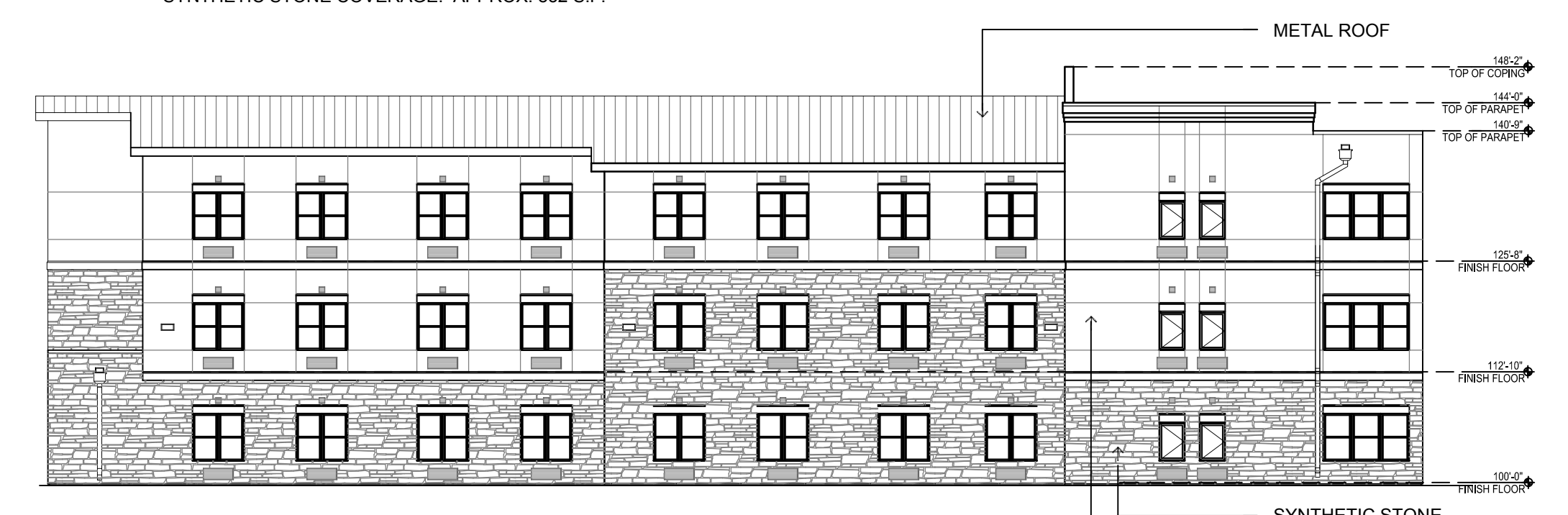
C4 BUILDING C-1 - NORTH ELEVATION
1/16" = 1'-0"
STUCCO COVERAGE: APPROX. 1,804 S.F.
SYNTHETIC STONE COVERAGE: APPROX. 852 S.F.



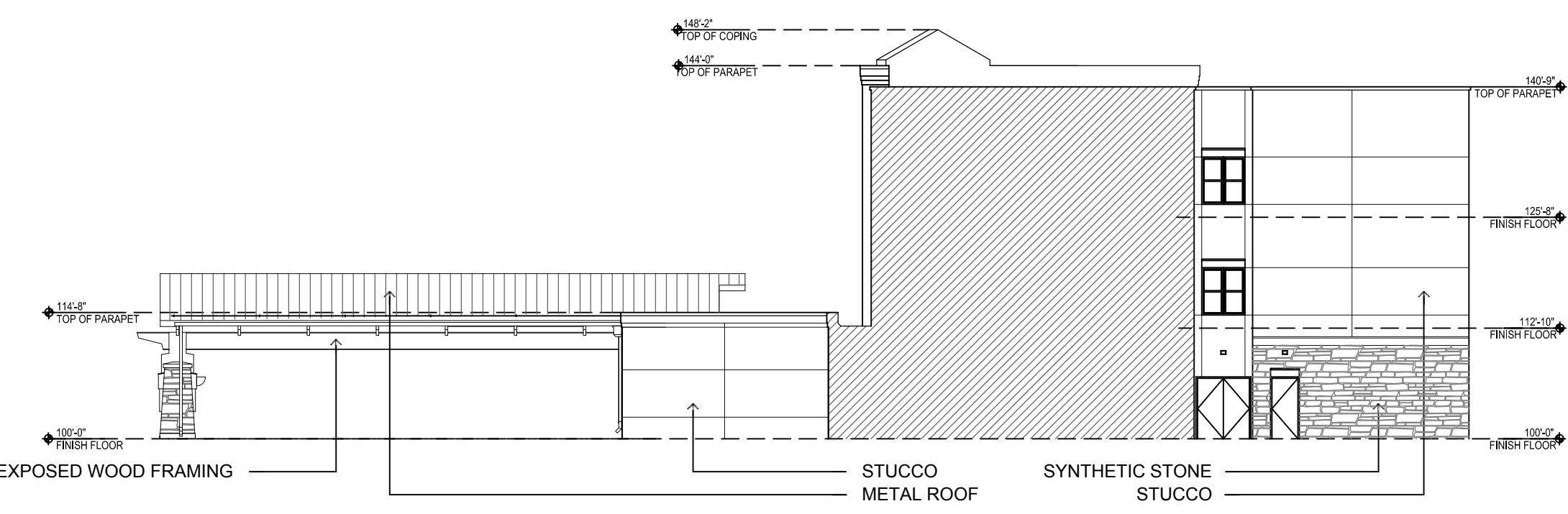
B1 BUILDING B - EAST ELEVATION
1/16" = 1'-0"
STUCCO COVERAGE: APPROX. 2,629 S.F.
SYNTHETIC STONE COVERAGE: APPROX. 2,317 S.F.



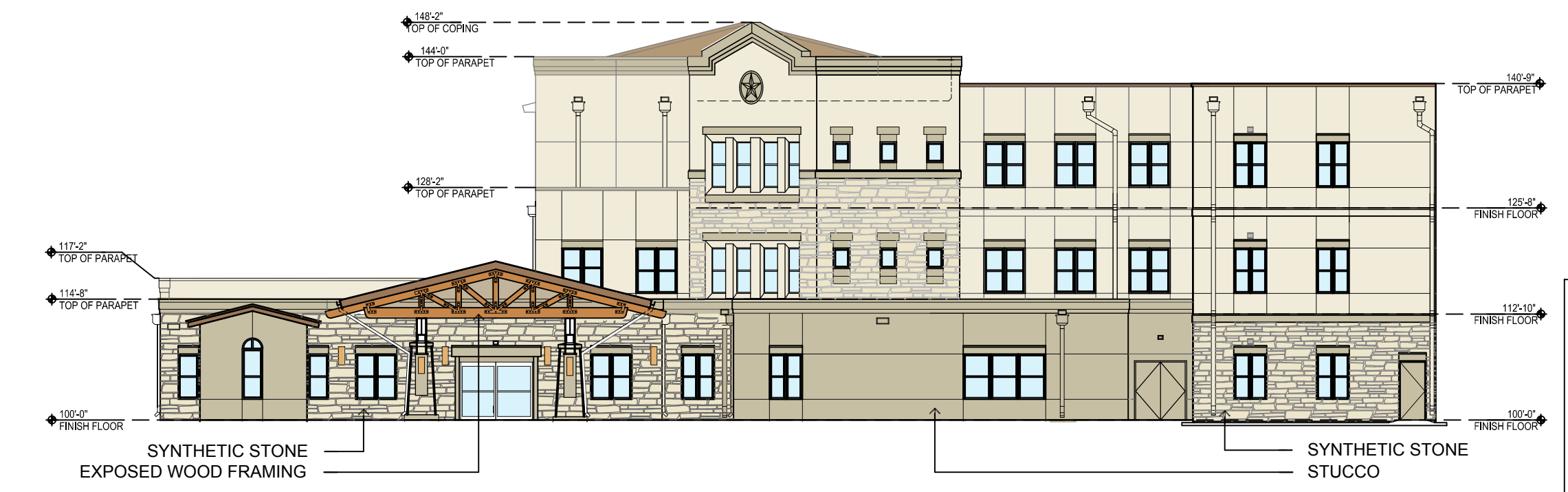
B3 BUILDING B - NORTH ELEVATION
1/16" = 1'-0"
STUCCO COVERAGE: APPROX. 1,009 S.F.
SYNTHETIC STONE COVERAGE: APPROX. 985 S.F.



B4 BUILDING B - WEST ELEVATION
1/16" = 1'-0"
STUCCO COVERAGE: APPROX. 2,898 S.F.
SYNTHETIC STONE COVERAGE: APPROX. 2,373 S.F.

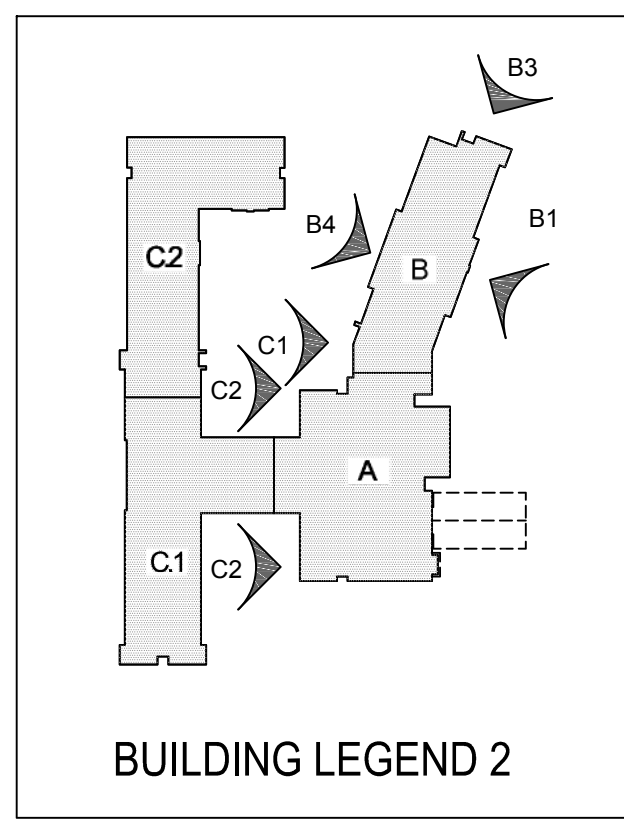
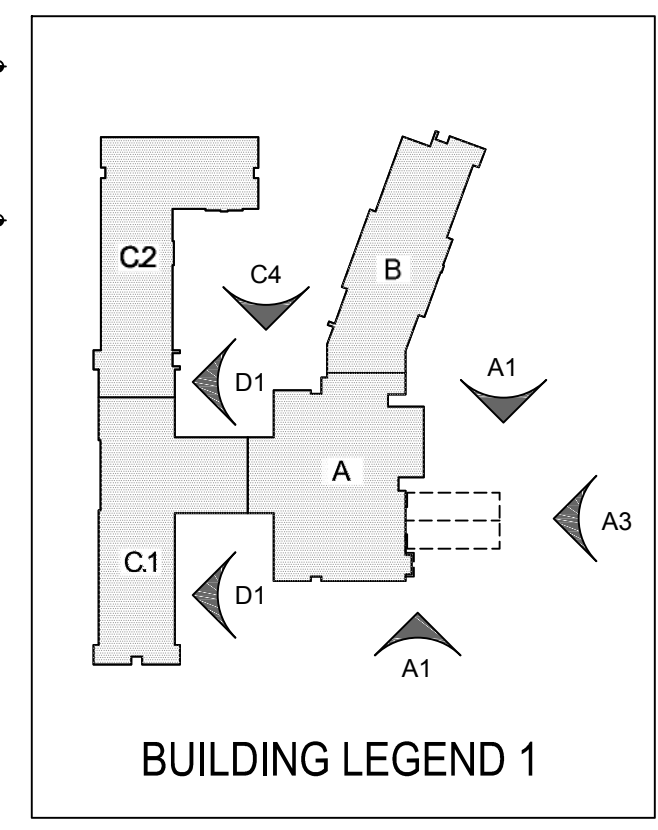


A1 BUILDING A - NORTH ELEVATION
1/16" = 1'-0"
STUCCO COVERAGE: APPROX. 1,265 S.F.
SYNTHETIC STONE COVERAGE: APPROX. 356 S.F.



A3 BUILDING A - EAST ELEVATION
1/16" = 1'-0"
STUCCO COVERAGE: APPROX. 3,747 S.F.
SYNTHETIC STONE COVERAGE: APPROX. 1,272 S.F.

RECEIVED
By Kathy Wright at 8:22 am, May 14, 2013



**TUSCARORA
AT CRAIG RANCH**
Alma & Stacy Rd.
McKinney, Texas

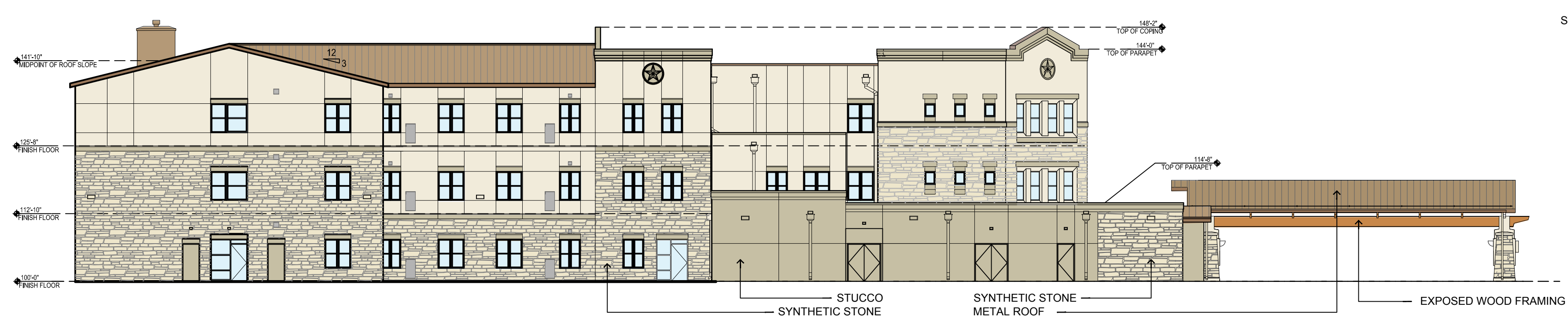
GENERAL NOTES

1. AVERAGE FINISH GRADE AT APPROXIMATELY 6" BELOW FINISH FLOOR ELEVATION
2. SYNTHETIC STONE TOTALS APPROXIMATELY 35% COVERAGE

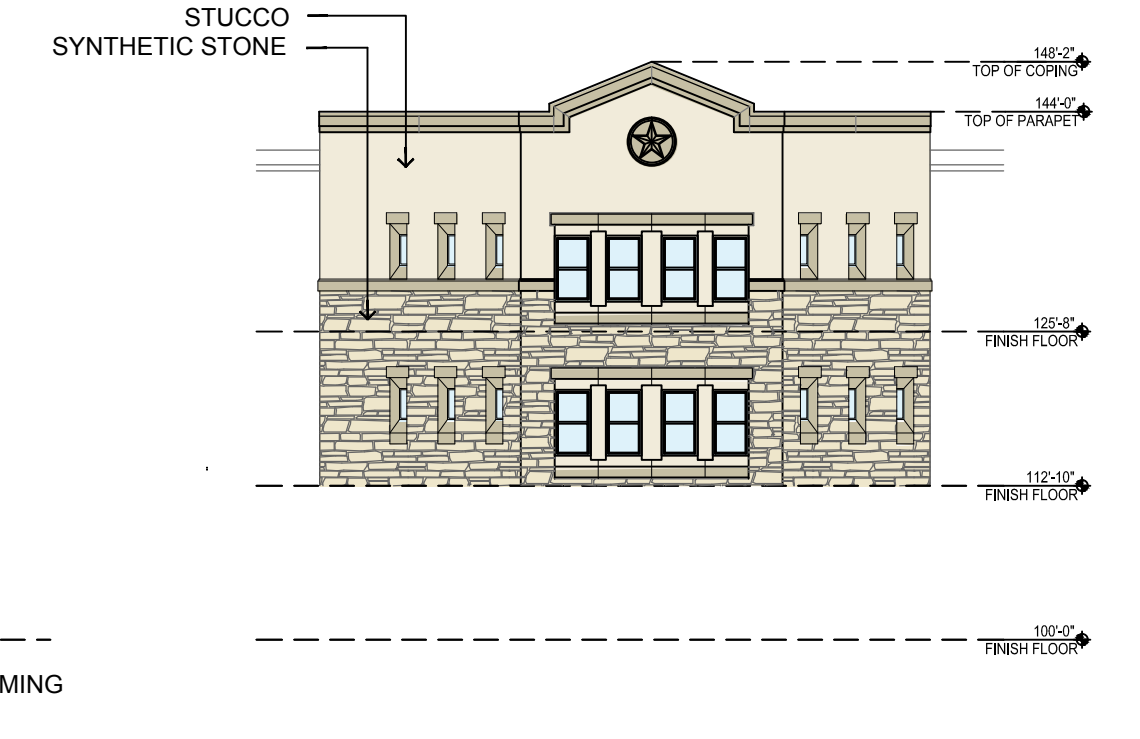
REVISIONS

△	
△	
△	
△	

DRAWN BY	WWM
REVIEWED BY	RAW
DATE	05.13.13
PROJECT NO.	13-0409
DRAWING NAME	BUILDING ELEVATIONS
SHEET NO.	AE-202 3 OF 3



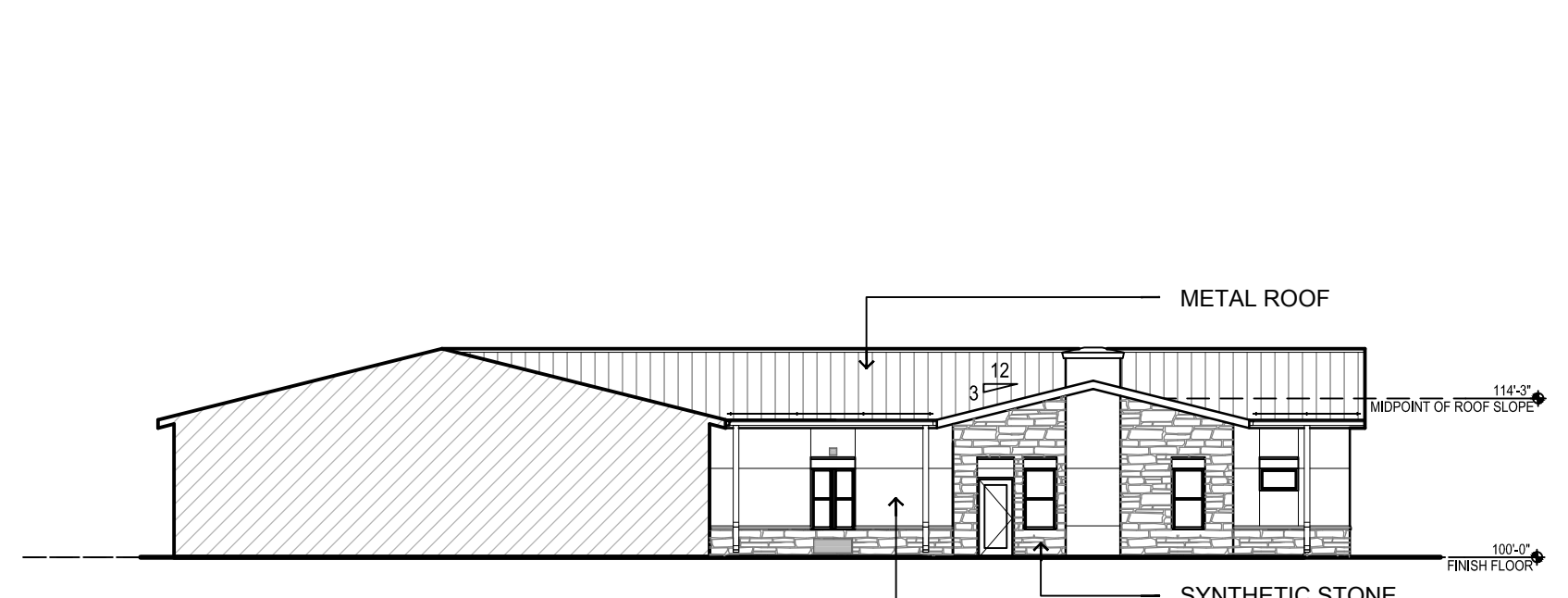
C1 BUILDINGS A & C-1 - SOUTH ELEVATION
1/16" = 1'-0"
STUCCO COVERAGE: APPROX. 4,223 S.F.
SYNTHETIC STONE COVERAGE: APPROX. 2,809 S.F.



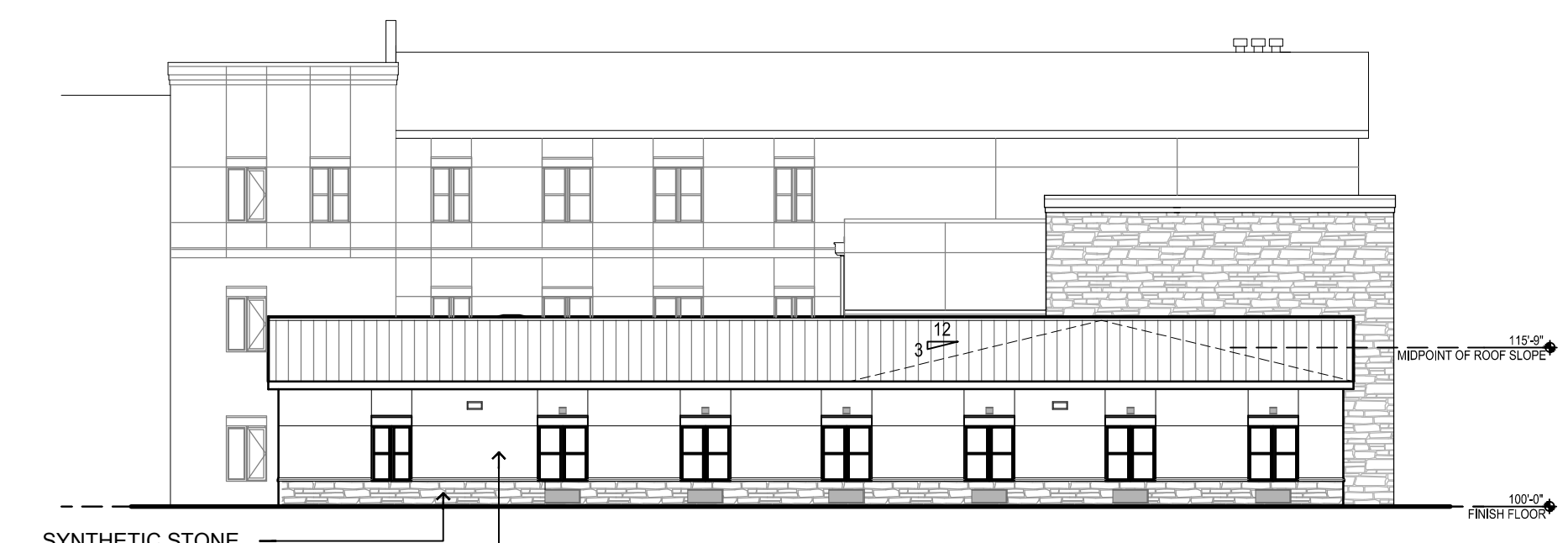
C5 BUILDING A - SOUTHEAST ELEVATION
1/16" = 1'-0"
STUCCO COVERAGE: APPROX. 263 S.F.
SYNTHETIC STONE COVERAGE: APPROX. 159 S.F.



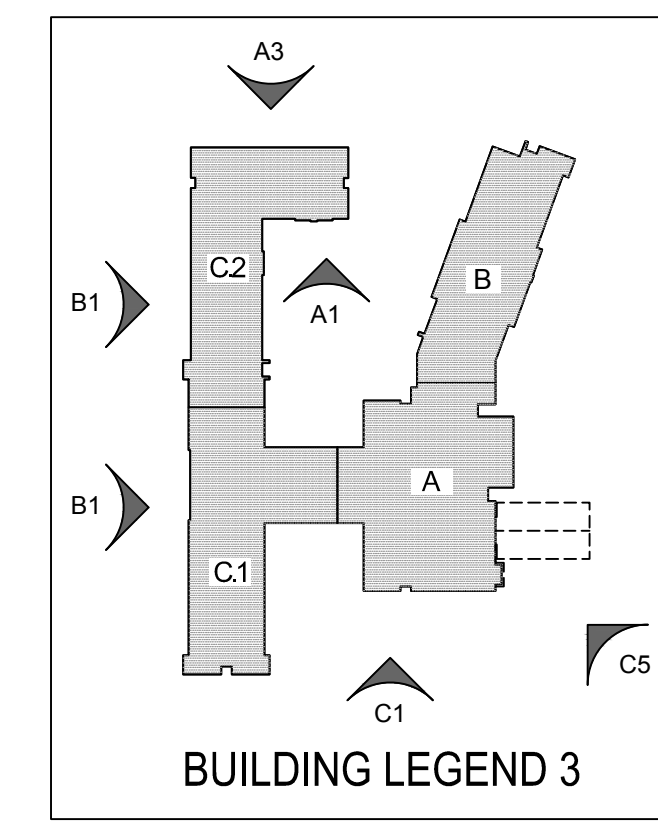
B1 BUILDINGS C-1 & C-2 - WEST ELEVATION
1/16" = 1'-0"
STUCCO COVERAGE: APPROX. 6,414 S.F.
SYNTHETIC STONE COVERAGE: APPROX. 1,814 S.F.



A1 BUILDING C-2 - SOUTH ELEVATION
1/16" = 1'-0"
STUCCO COVERAGE: APPROX. 325 S.F.
SYNTHETIC STONE COVERAGE: APPROX. 321 S.F.



A3 BUILDING C-2 - NORTH ELEVATION
1/16" = 1'-0"
STUCCO COVERAGE: APPROX. 720 S.F.
SYNTHETIC STONE COVERAGE: APPROX. 731 S.F.



RECEIVED
By Kathy Wright at 8:22 am, May 14, 2013