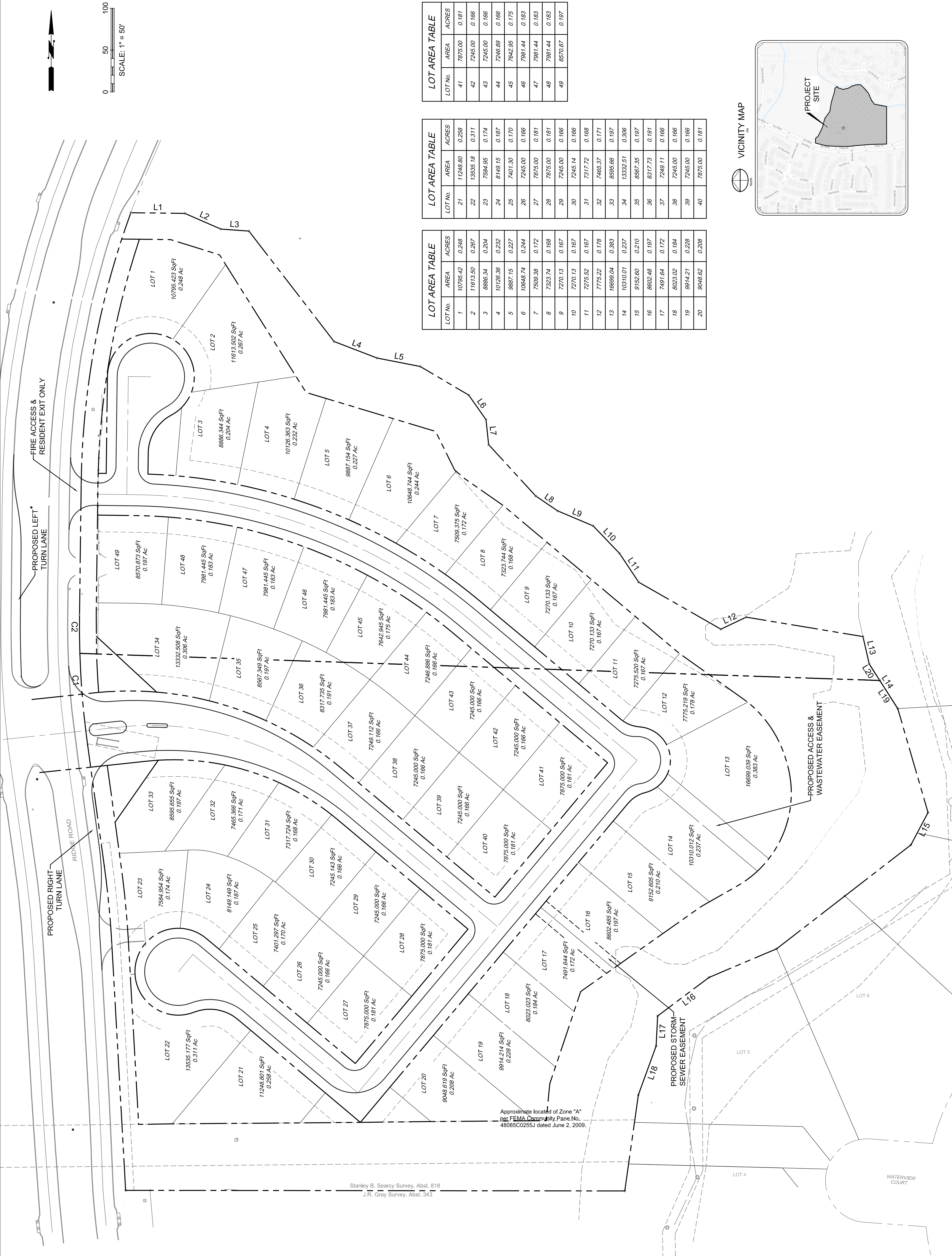


THIS DOCUMENT IS INTENDED FOR REGISTERED PROFESSIONALS ONLY. PERMITTING, BIDDING OR CONSTRUCTION PURPOSES.

NOT FOR CONSTRUCTION

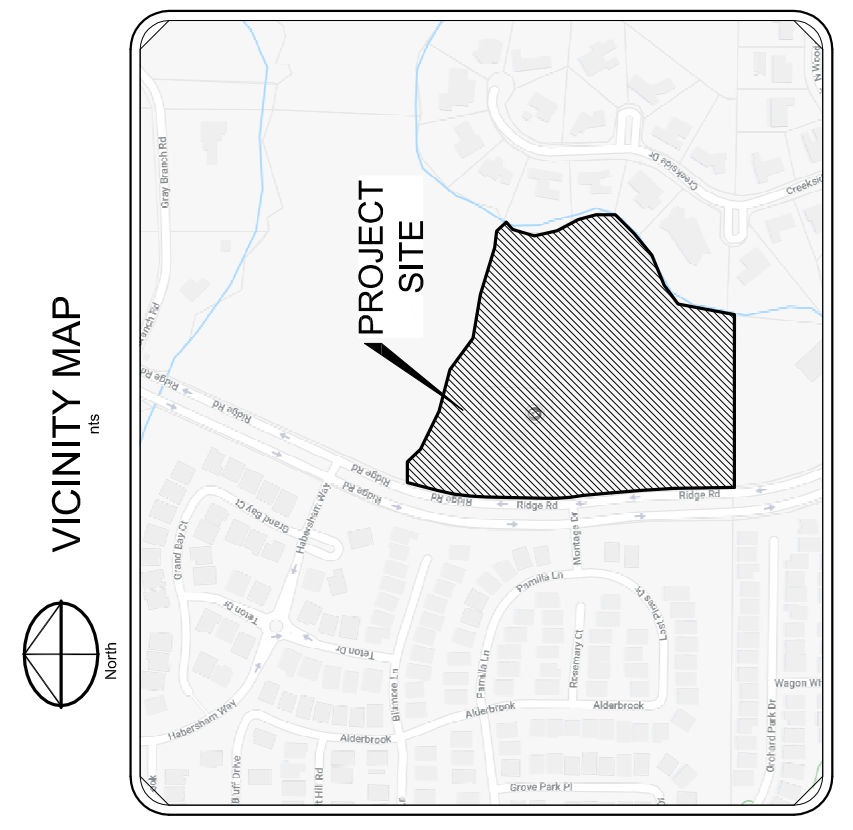
IR	DATE	DESCRIPTION



LOT No.	AREA	ACRES
41	7875.00	0.181
42	7245.00	0.166
43	7245.00	0.166
44	7246.89	0.166
45	7842.95	0.175
46	7881.44	0.183
47	7881.44	0.183
48	7881.44	0.183
49	8570.87	0.197

LOT No.	AREA	ACRES
21	11248.80	0.258
22	13535.18	0.311
23	7884.95	0.174
24	8149.15	0.187
25	7401.30	0.170
26	7245.00	0.166
27	7875.00	0.181
28	7875.00	0.181
29	7245.00	0.166
30	7245.14	0.166
31	7317.72	0.168
32	7465.37	0.171
33	8595.66	0.197
34	13332.51	0.306
35	8567.35	0.197
36	8317.73	0.191
37	7249.11	0.166
38	7245.00	0.166
39	7245.00	0.166
40	7875.00	0.181

LOT No.	AREA	ACRES
1	10795.42	0.248
2	11613.50	0.267
3	8886.34	0.204
4	10126.36	0.232
5	9887.15	0.227
6	10648.74	0.244
7	7509.38	0.172
8	7323.74	0.168
9	7270.13	0.167
10	7270.13	0.167
11	7275.52	0.167
12	7775.22	0.178
13	16699.04	0.383
14	10310.01	0.237
15	9152.80	0.210
16	8002.48	0.183
17	7491.64	0.172
18	8023.02	0.184
19	8974.21	0.228
20	9048.62	0.208



Approximate location of Zone "A"
per FEMA Community Panel No.
48085C0255J dated June 2, 2009.

Stanley B. Searcy Survey, Abst. 818
J.R. Gray Survey, Abst. 343