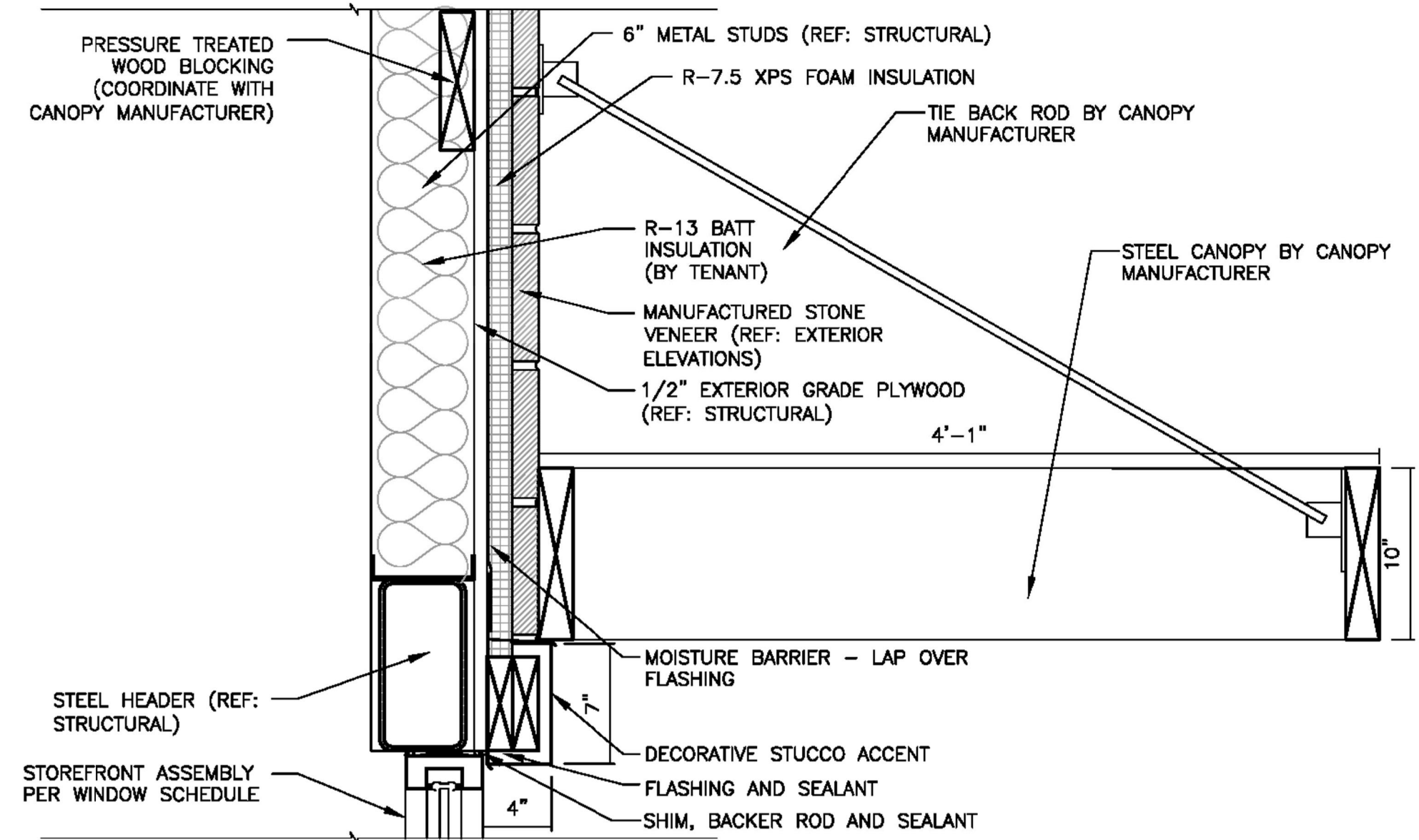


BUILDING A MATERIAL CALCULATIONS								
	NORTH	PERCENT	EAST	PERCENT	SOUTH	PERCENT	WEST	PERCENT
STONE	1999 SF	82.4%	1641 SF	86.4%	2902 SF	87.1%	1422 SF	86.8%
EIFS	427 SF	17.6%	258 SF	13.6%	428 SF	12.9%	216 SF	13.2%
TOTAL	2426 SF	-	1899 SF	-	3330 SF	-	1638 SF	-
STOREFRONT/DOORS	1038 SF	-	188 SF	-	144 SF	-	192 SF	-
TOTAL	3464 SF	-	2067 SF	-	3474 SF	-	1830 SF	-



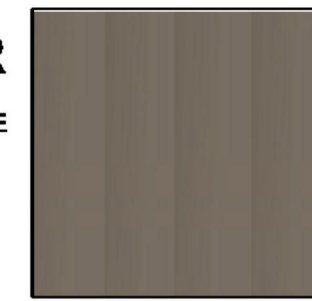
ANODIZED ALUMINUM STOREFRONT

COLOR: BLACK



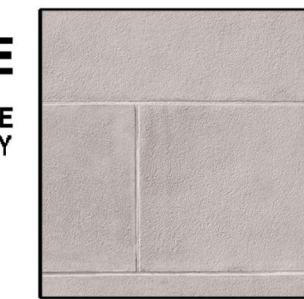
AGED COPPER

BERRIDGE



CORONADO STONE

SMOOTH STONE HARVARD GRAY



CORONADO STONE

PRO-LEDGE COLOR: HURON



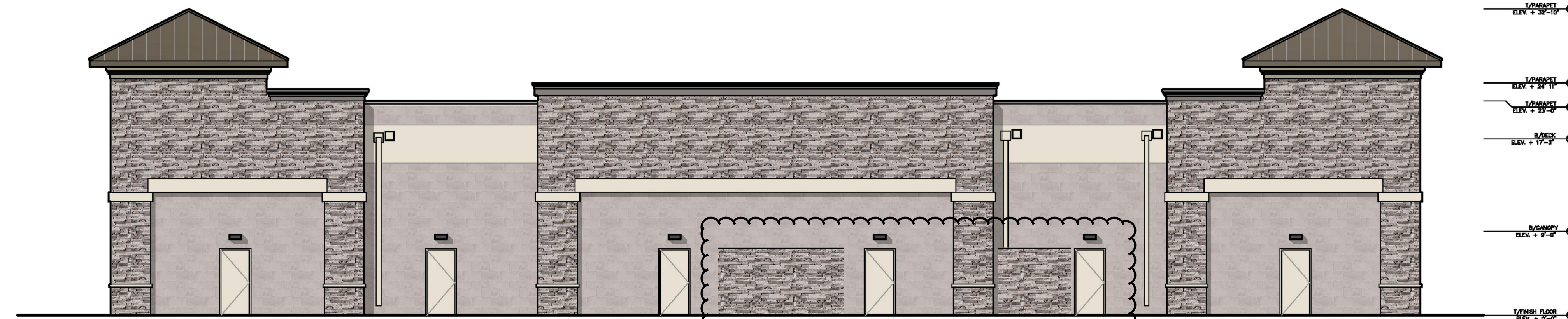
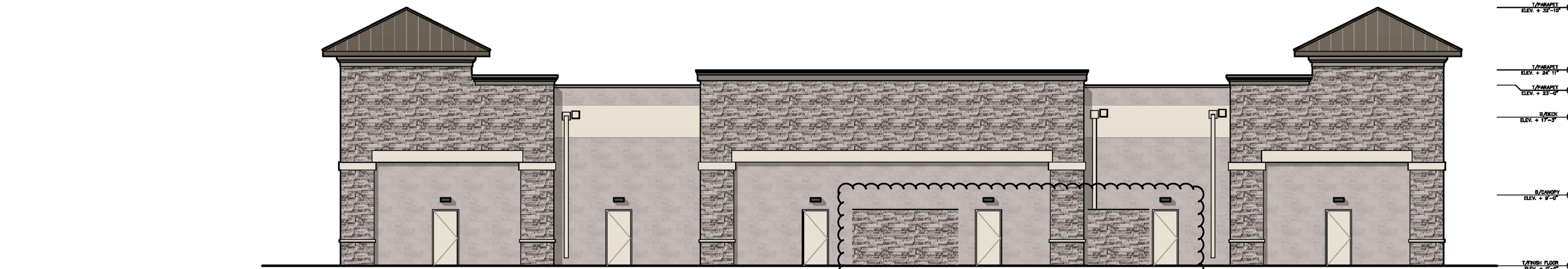
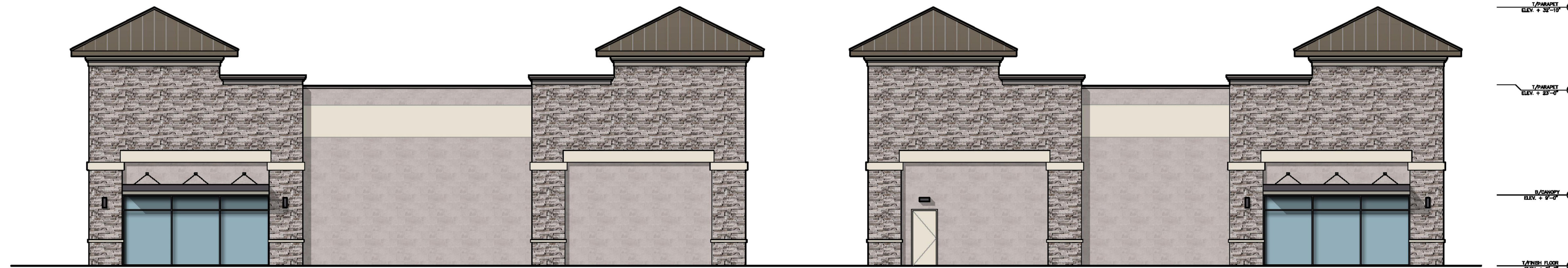
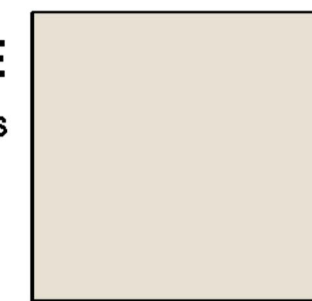
SW7067 - CITYSCAPE

STUCCO AND EIFS ACCENTS



SW7042 - SHOJI WHITE

STUCCO AND EIFS ACCENTS



513 MAIN STREET, SUITE 300
FORT WORTH, TEXAS 76102
817.820.0433 o 817.705.3387 c

VICTORY GROUP

PROJECT NAME	VICTORY AT STONEBRIDGE BUILDING A
DESCRIPTION	PROPOSED MULTI-TENANT SHELL BUILDING
JOB NAME	VICTORY
ROGUE ARCHITECTS	PROTOTYPE ISSUE DATE 2015
REVIEWED	ISSUE DATE 04/29/2016
SITE ADDRESS	SEC. STONEBRIDGE DR AND HWY. 380, MCKINNEY, TX 75071

A2.1

RECEIVED
By Planning Department at 1:57 pm, Apr 11, 2017

