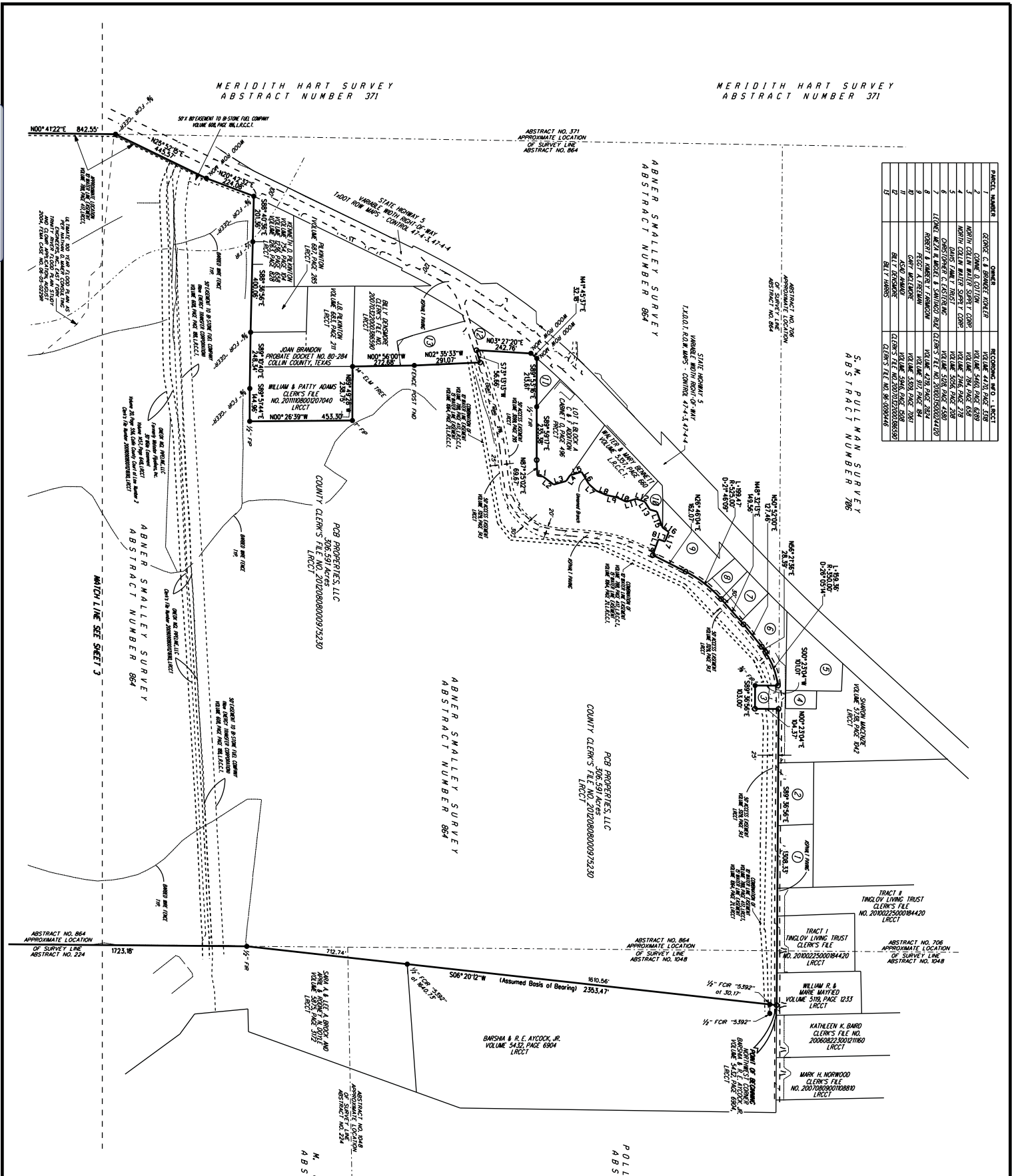


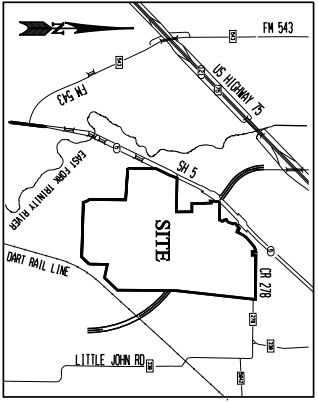
# Exhibit D

PARCEL NUMBER	OWNER	RECORDING NO. & INSTRUMENT
1	GEORGE C. & JENNIFER C. BOONE	VOLUME 542, PAGE 6209
2	NORTH COLLIN WATER SUPPLY COMPANY	VOLUME 784, PAGE 639
3	NORTH COLLIN WATER SUPPLY COMPANY	VOLUME 784, PAGE 639
4	NORTH COLLIN WATER SUPPLY COMPANY	VOLUME 784, PAGE 639
5	DAVID FARM, TRUST	VOLUME 518, PAGE 1233
6	DAVID FARM, TRUST	VOLUME 518, PAGE 1233
7	LEONEL MORALES & MARCELO T. SANTIAGO	CLERK'S FILE NO. 2002025000420
8	ROBERT A. WARD & JENNIFER L. WARD	VOLUME 429, PAGE 2824
9	PETSCHE & ASSOCIATES, INC.	VOLUME 517, PAGE 884
10	DAVID FARM, TRUST	VOLUME 518, PAGE 1233
11	DAVID FARM, TRUST	VOLUME 518, PAGE 1233
12	BILLY WOODMAN	CLERK'S FILE NO. 2002025000389
13	BILLY WOODMAN	CLERK'S FILE NO. 2002025000389



- Legend**
- PARCEL BOUNDARY
  - SURVEY POINT
  - POINT OF BEGINNING
  - POINT OF INTERSECTION
  - POINT OF CURVE
  - POINT OF TANGENCY
  - POINT OF SIGHT
  - POINT OF VIEW
  - POINT OF CONTACT
  - POINT OF MEASUREMENT
  - POINT OF OBSERVATION
  - POINT OF REFERENCE
  - POINT OF ALIGNMENT
  - POINT OF CONNECTION
  - POINT OF ADJUSTMENT
  - POINT OF CORRECTION
  - POINT OF VERIFICATION
  - POINT OF CHECK
  - POINT OF CONTROL
  - POINT OF BENCHMARK
  - POINT OF MONUMENT
  - POINT OF MARKER
  - POINT OF SIGN
  - POINT OF STAKE
  - POINT OF PIN
  - POINT OF NAIL
  - POINT OF SCREW
  - POINT OF BOLT
  - POINT OF WIRE
  - POINT OF CEMENT
  - POINT OF BRICK
  - POINT OF CONCRETE
  - POINT OF METAL
  - POINT OF WOOD
  - POINT OF STONE
  - POINT OF GLASS
  - POINT OF PAPER
  - POINT OF LEAD
  - POINT OF ZINC
  - POINT OF COPPER
  - POINT OF ALUMINUM
  - POINT OF IRON
  - POINT OF STEEL
  - POINT OF BRASS
  - POINT OF SILVER
  - POINT OF GOLD
  - POINT OF PLATINUM
  - POINT OF DIAMOND
  - POINT OF JEWELRY
  - POINT OF ART
  - POINT OF SCIENCE
  - POINT OF HISTORY
  - POINT OF CULTURE
  - POINT OF SOCIETY
  - POINT OF ECONOMY
  - POINT OF POLITICS
  - POINT OF LAW
  - POINT OF MEDICINE
  - POINT OF EDUCATION
  - POINT OF RELIGION
  - POINT OF SPIRITUALITY
  - POINT OF PHILOSOPHY
  - POINT OF SCIENCE
  - POINT OF ART
  - POINT OF HISTORY
  - POINT OF CULTURE
  - POINT OF SOCIETY
  - POINT OF ECONOMY
  - POINT OF POLITICS
  - POINT OF LAW
  - POINT OF MEDICINE
  - POINT OF EDUCATION
  - POINT OF RELIGION
  - POINT OF SPIRITUALITY
  - POINT OF PHILOSOPHY

LINE	BEARING	DISTANCE
L1	N87°20'00"E	58.00
L2	N87°17'00"E	58.00
L3	N87°14'00"E	58.00
L4	N87°11'00"E	58.00
L5	N87°08'00"E	58.00
L6	N87°05'00"E	58.00
L7	N87°02'00"E	58.00
L8	N86°59'00"E	58.00
L9	N86°56'00"E	58.00
L10	N86°53'00"E	58.00
L11	N86°50'00"E	58.00
L12	N86°47'00"E	58.00
L13	N86°44'00"E	58.00
L14	N86°41'00"E	58.00
L15	N86°38'00"E	58.00
L16	N86°35'00"E	58.00
L17	N86°32'00"E	58.00
L18	N86°29'00"E	58.00
L19	N86°26'00"E	58.00
L20	N86°23'00"E	58.00



RECEIVED  
By Planning Department at 3:05 pm, Jan 26, 2015

**PETSCHE & ASSOCIATES, INC.**  
PROFESSIONAL ENGINEERS - LAND SURVEYORS - SURVEYING CONSULTANTS  
2808 EDWARD DRUMM, SUITE 200, WILLOW WOOD, TEXAS 75077-5208  
DATE: MAY, 2013  
SCALE: JOB NUMBER: SHEET 2 OF 3



