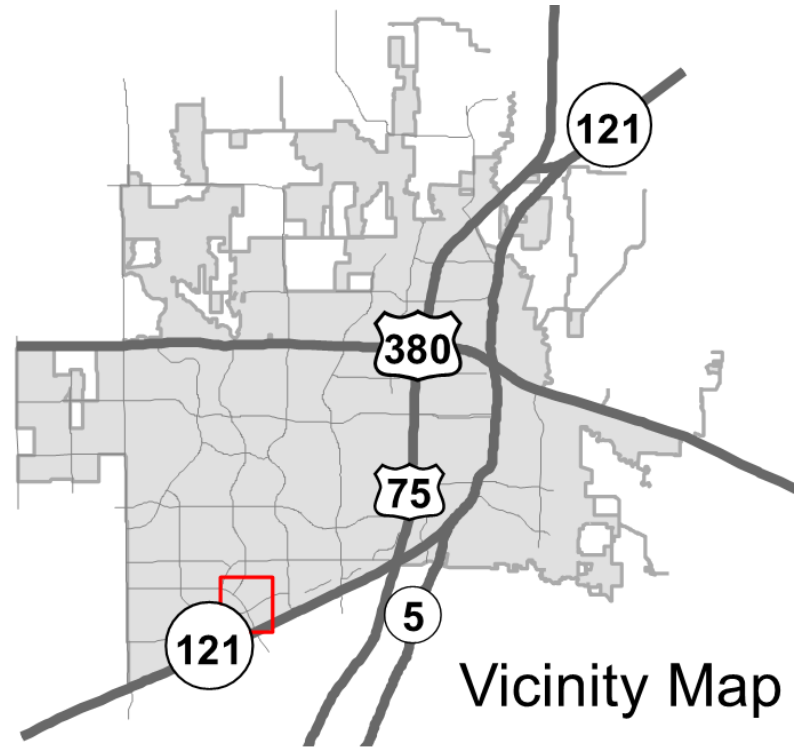
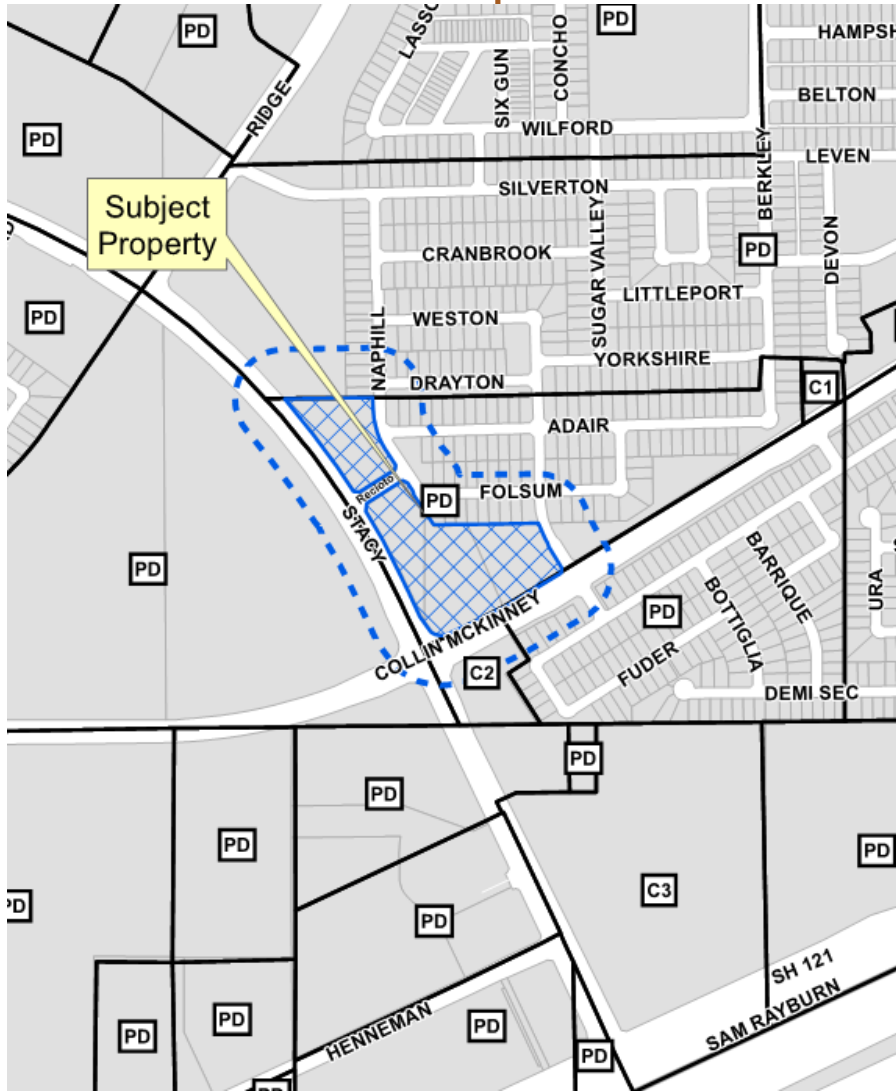


# NEC Collin McKinney & Stacy Rezoning

19-0035Z2

# Location Map



Viewing the subject property toward the north west from Collin McKinney Parkway

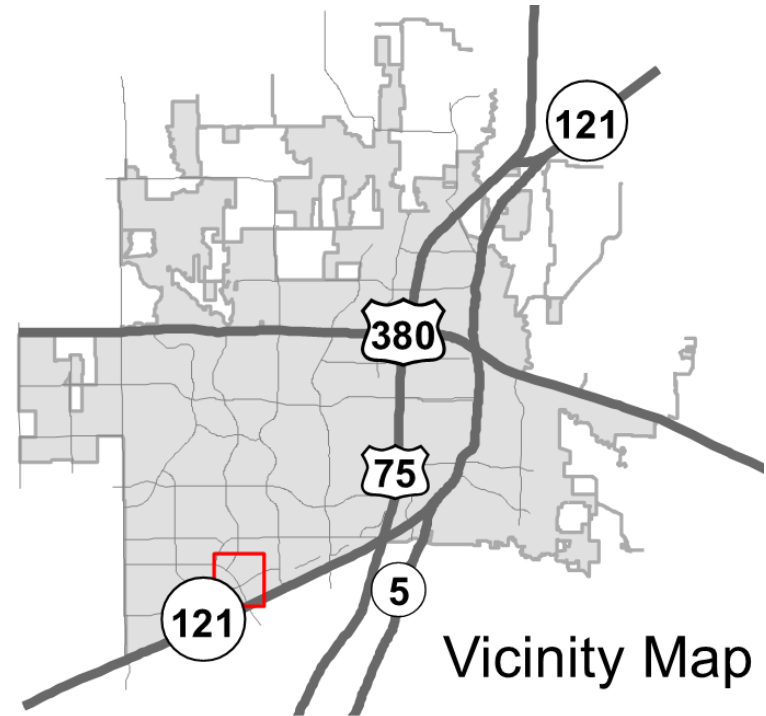
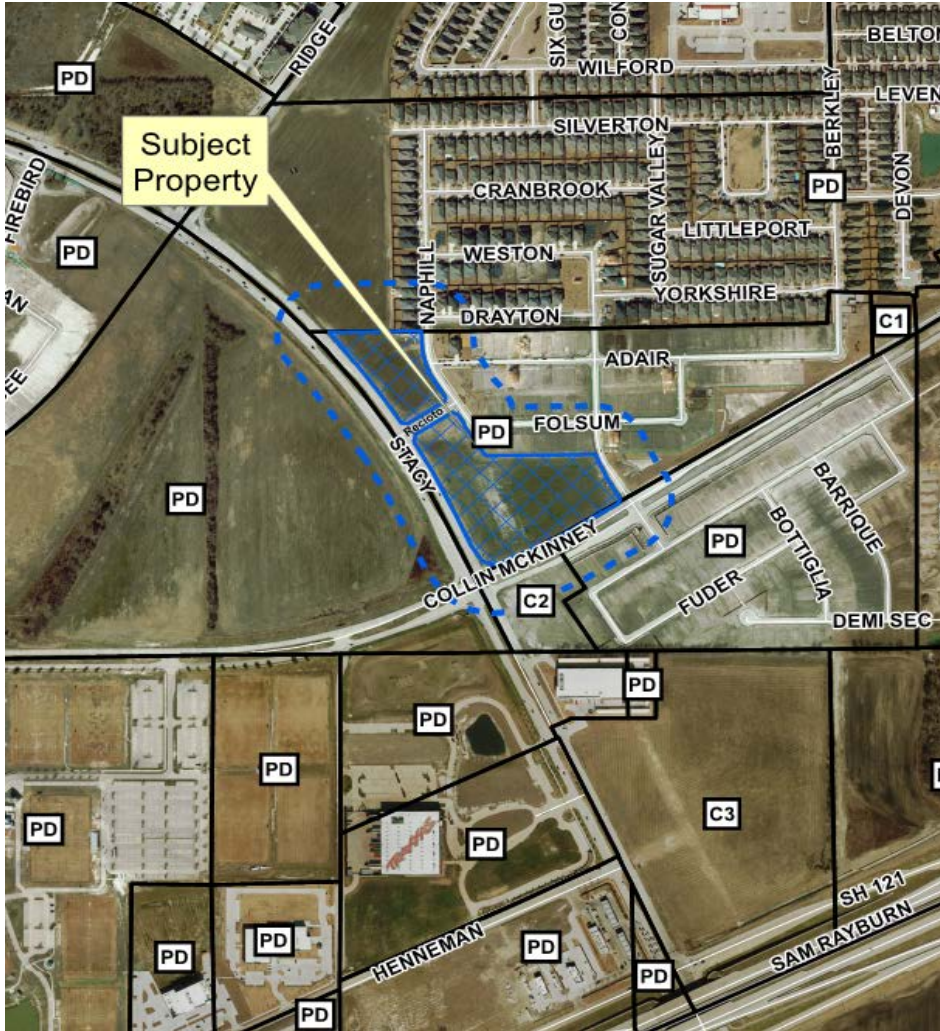


Viewing the subject property toward the north east from Stacy Road

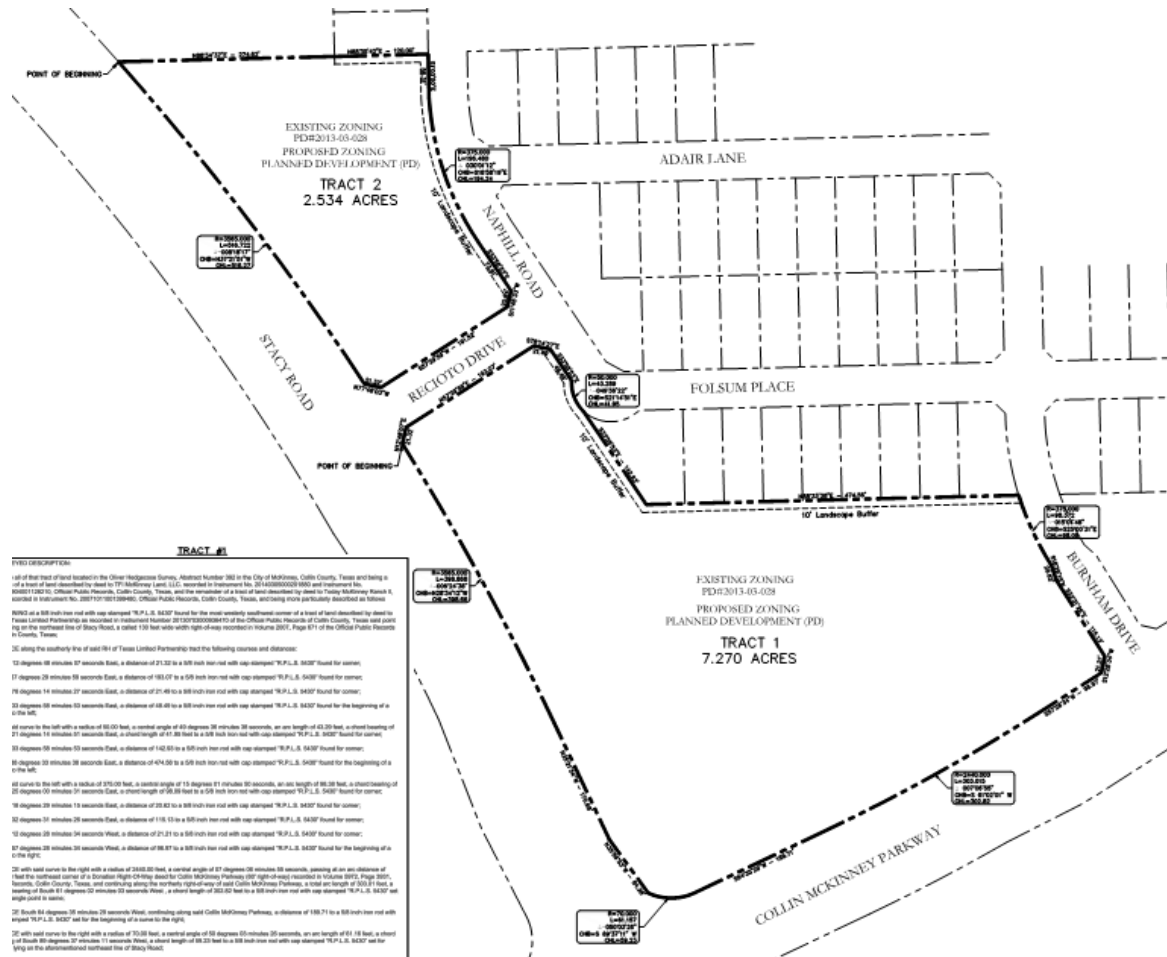




# Aerial Exhibit



# Proposed Zoning Exhibit



**EYES DESCRIPTION:**

All of that tract of land located in the Olivar Hydrographic Survey, Abstract Number 362 in the City of McKinney, Collin County, Texas, and being a part of a tract described by deed in TFM McKinney Survey, S1/4, recorded in Public Records 201-00000002000 and instrument No. 200871230-01, Collin Public Records, Collin County, Texas, and the remainder of a tract described by deed to Trinity McKinney Ranch II, recorded in Instrument No. 2007701020-0045, Collin Public Records, Collin County, Texas, and being more particularly described as follows:

**TRACT #1**

10 degrees 08 minutes 57 seconds East, a distance of 21.32 to a 50 inch tree-rod with cap stamped "R.P.L.S. 5435" found for corner;

17 degrees 28 minutes 58 seconds East, a distance of 183.07 to a 50 inch tree-rod with cap stamped "R.P.L.S. 5435" found for corner;

18 degrees 14 minutes 27 seconds East, a distance of 21.49 to a 50 inch tree-rod with cap stamped "R.P.L.S. 5435" found for corner;

23 degrees 53 minutes 52 seconds East, a distance of 68.48 to a 50 inch tree-rod with cap stamped "R.P.L.S. 5435" found for the beginning of a curve;

All curves to the left with a radius of 98.20 feet, a central angle of 45 degrees 28 minutes 38 seconds, an arc length of 43.20 feet, a chord bearing of 27 degrees 18 minutes 51 seconds East, a chord length of 41.88 feet to a 50 inch tree-rod with cap stamped "R.P.L.S. 5435" found for corner;

23 degrees 53 minutes 52 seconds East, a distance of 474.50 to a 50 inch tree-rod with cap stamped "R.P.L.S. 5435" found for corner;

60 degrees 28 minutes 28 seconds East, a distance of 474.50 to a 50 inch tree-rod with cap stamped "R.P.L.S. 5435" found for the beginning of a curve;

All curves to the left with a radius of 370.00 feet, a central angle of 13 degrees 11 minutes 30 seconds, an arc length of 86.28 feet, a chord bearing of 20 degrees 53 minutes 21 seconds East, a chord length of 95.58 feet to a 50 inch tree-rod with cap stamped "R.P.L.S. 5435" found for corner;

19 degrees 29 minutes 18 seconds East, a distance of 25.82 to a 50 inch tree-rod with cap stamped "R.P.L.S. 5435" found for corner;

52 degrees 51 minutes 25 seconds East, a distance of 118.12 to a 50 inch tree-rod with cap stamped "R.P.L.S. 5435" found for corner;

12 degrees 28 minutes 24 seconds West, a distance of 21.21 to a 50 inch tree-rod with cap stamped "R.P.L.S. 5435" found for corner;

87 degrees 28 minutes 24 seconds West, a distance of 98.87 to a 50 inch tree-rod with cap stamped "R.P.L.S. 5435" found for the beginning of a curve;

All curves to the right with a radius of 248.00 feet, a central angle of 87 degrees 08 minutes 58 seconds, bearing at an arc distance of feet the northeast corner of a Double Right-Of-Way Road for Collin McKinney Parkway (87° right-way) recorded in Volume 8075, Page 8077, Records, Collin County, Texas, and continuing along the northerly right-of-way of said Collin McKinney Parkway, a total arc length of 303.31 feet, a bearing of South 81 degrees 02 minutes 53 seconds West, a chord length of 303.02 feet to a 50 inch tree-rod with cap stamped "R.P.L.S. 5435" set for 10' landscape buffer.

28 South 81 degrees 02 minutes 28 seconds West, northerly along said Collin McKinney Parkway, a distance of 189.71 to a 50 inch tree-rod with cap stamped "R.P.L.S. 5435" set for the beginning of a curve to the right;

All curves to the right with a radius of 70.00 feet, a central angle of 88 degrees 55 minutes 35 seconds, an arc length of 81.18 feet, a chord of South 80 degrees 29 minutes 11 seconds West, a chord length of 89.25 feet to a 50 inch tree-rod with cap stamped "R.P.L.S. 5435" set for 10' landscape buffer on the abutment northeast line of Stacy Road.



# Existing "PD" layout

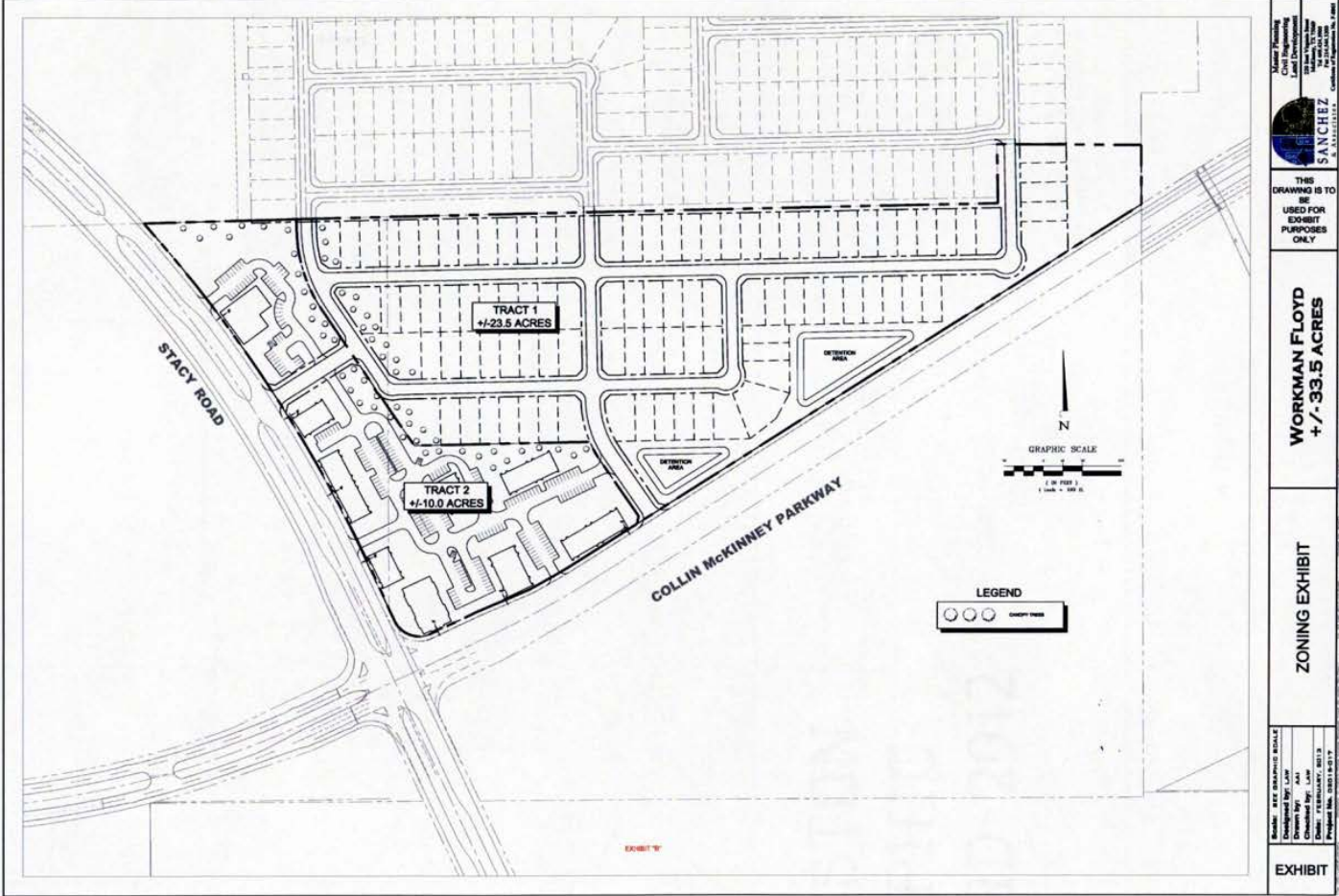


EXHIBIT B

