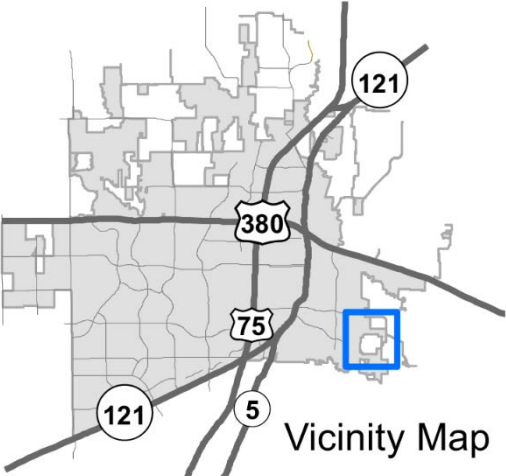
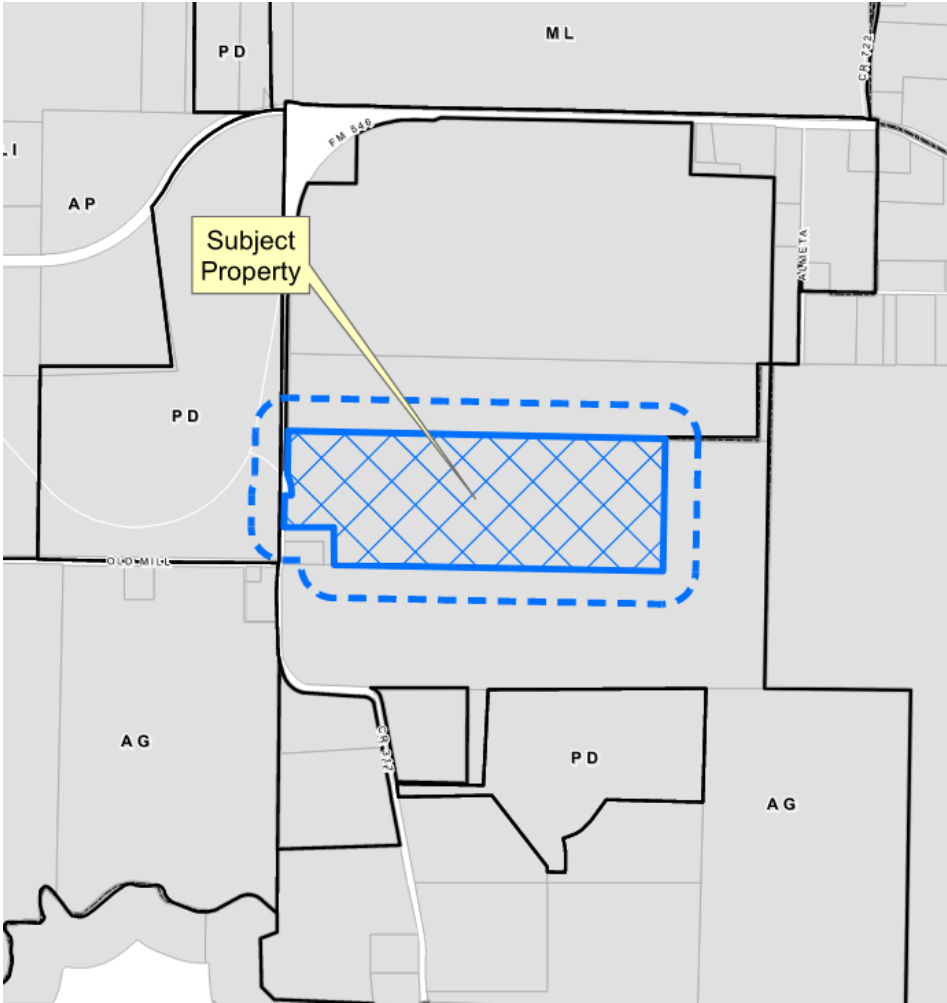


CR 317 Industrial Annexation and Zoning

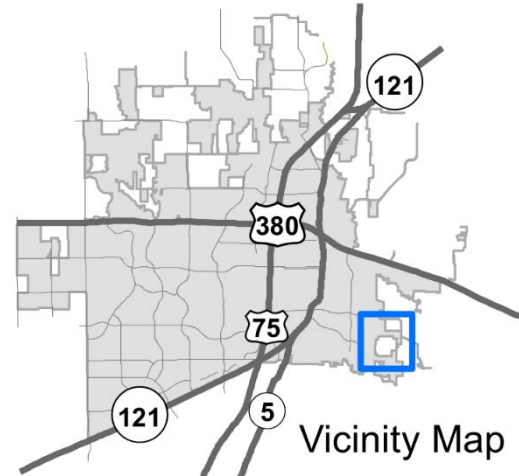
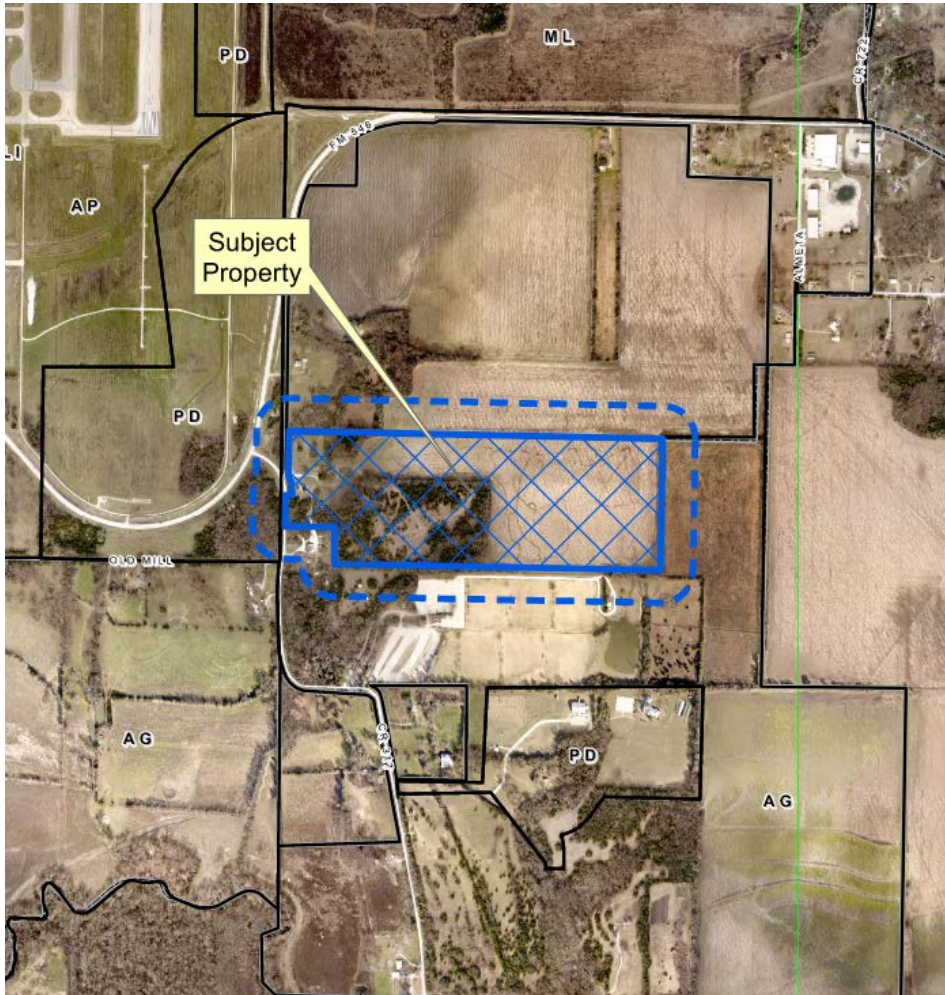
21-0008A (Annexation)

21-0087Z (Zoning)

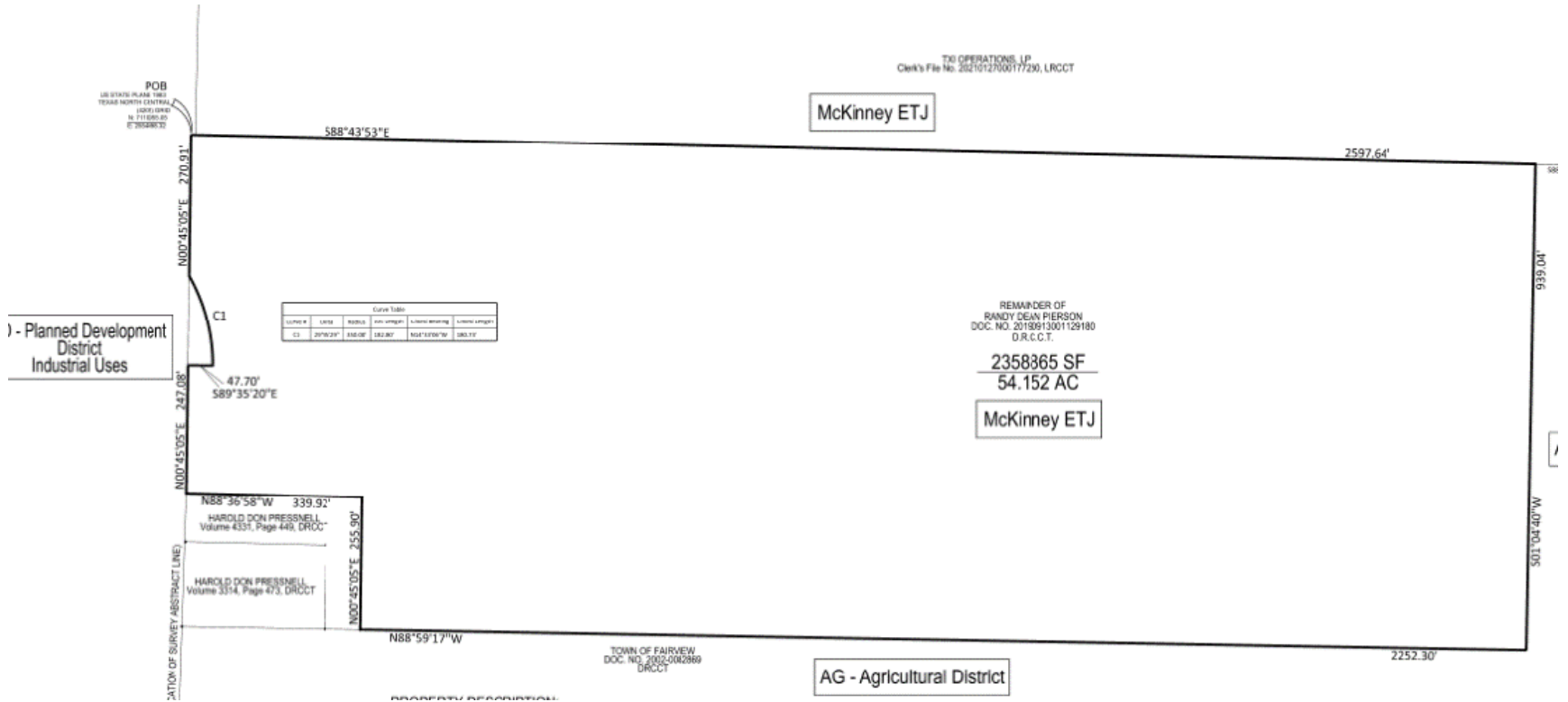
Location Map



Aerial Exhibit

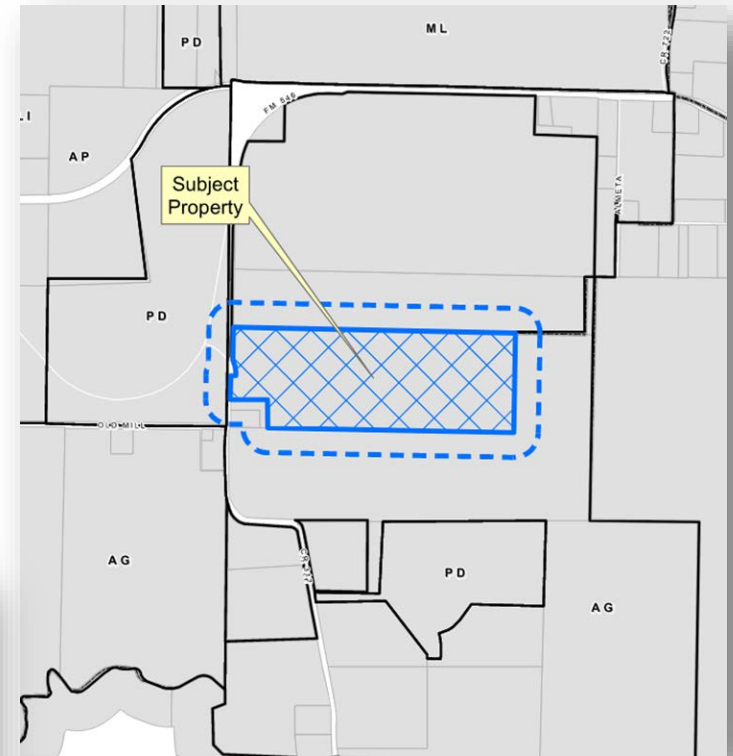
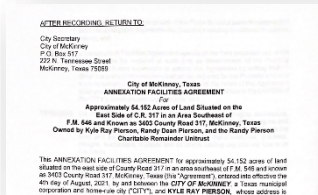


Proposed Zoning Exhibit



ANNEXATION ITEMS/INFORMATION

- Annexation Ordinance, including Municipal Services Plan
- Annexation Facilities Agreement



ZONING ITEMS/INFORMATION

- Proposed Zoning: "PD" – Planned Development District
 - Light Industrial Uses
 - Rock, concrete construction recycling
 - Dirt and topsoil storage
 - Pug mill operations and soil stabilization material production
 - 6' berm with cedar trees along southern property line

