



01 BLOCK A EAST ELEVATION (CHESTNUT ST)

Material % Calculations (Block A)

	% Total	% Required
Brick	99%	80%
Stucco	0%	Not to Exceed 20%
Metal Panel	1%	

Glazing % Calculations (East Elevation)

	Gross Sqft	Glazing Sqft	% Total	% Required
Lvl 1 Combined Res/Leasing	6940 Sqft	1510 Sqft	21%	30%
Residential Lvl 2	3731 Sqft	1289 Sqft	34%	
Residential Lvl 3	3746 Sqft	1289 Sqft	34%	
Residential Lvl 4	3738 Sqft	1289 Sqft	34%	
Residential Lvl 5	748 Sqft	275 Sqft	36%	

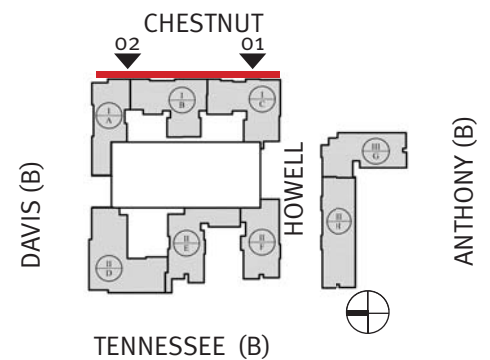
COLOR KEY

- 1 Heron Plume SW 6070
- 2 Mindful Gray SW 7016
- 3 Porpoise SW 7047
- 4 Acme Texas Black
- 5 Acme Desert Tan
- 6 Acme Charcoal Gray
- 7 Acme Princeton
- 8 Cast Stone Band
- 9 PAC-CLAD Zinc Mtl. Panel
- 10 PAC-CLAD Weathered Zinc Mtl. Panel
- 11 Iron Ore SW 7069 Mtl Paint Color
- 12 Dark Bronze Manco Storefront
- 13 Dark Rust Medallion J-Box Cover
- 14 Mindful Gray SW 7016 Elastomeric Coating Fine or Medium Texture Finish
- 15 1x12 Cement Trim Painted Iron Ore SW 7069

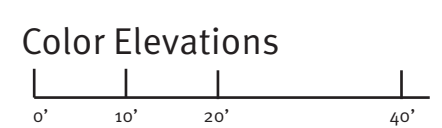
NOTE:
 1) ALL MATERIALS AND COLORS TO RETURN TO AN INSIDE CORNER.
 2) ALL VINYL WINDOWS TO BE WHITE.
 3) ALL COLORS, MATERIALS, STOREFRONT, & FINISHES TO BE VERIFIED ON MOCKUP.



02 BLOCK A EAST ELEVATION (CHESTNUT ST)



Downtown McKinney Block A&B
McKinney, TX



03.19.2018 2015034.00 W

Copyright © JHP 2016
 Not for Regulatory Approval, Permit or Construction: J. Mark Wolf, AIA
 Registered Architect of State of Texas, Registration No. 9129



01 BLOCK A NORTH ELEVATION (DAVIS ST)



02 BLOCK A NORTH ELEVATION (DAVIS ST)

COLOR KEY

- 1 Heron Plume SW 6070
- 2 Mindful Gray SW 7016
- 3 Porpoise SW 7047
- 4 Acme Texas Black
- 5 Acme Desert Tan
- 6 Acme Charcoal Gray
- 7 Acme Princeton
- 8 Cast Stone Band
- 9 PAC-CLAD Zinc Mtl. Panel
- 10 PAC-CLAD Weathered Zinc Mtl. Panel
- 11 Iron Ore SW 7069 Mtl Paint Color
- 12 Dark Bronze Manco Storefront
- 13 Dark Rust Medallion J-Box Cover
- 14 Mindful Gray SW 7016 Elastomeric Coating Fine or Medium Texture Finish
- 15 1x12 Cement Trim Painted Iron Ore SW 7069

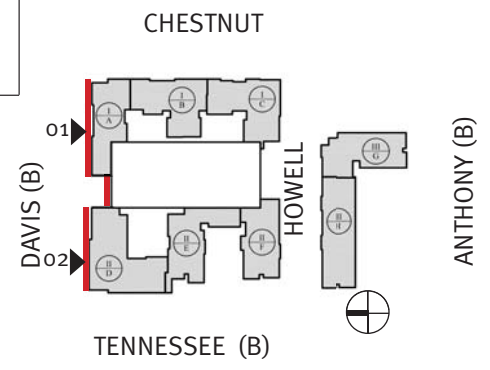
NOTE:
 1) ALL MATERIALS AND COLORS TO RETURN TO AN INSIDE CORNER.
 2) ALL VINYL WINDOWS TO BE WHITE.
 3) ALL COLORS, MATERIALS, STOREFRONT, & FINISHES TO BE VERIFIED ON MOCKUP.

Material % Calculations (Block A)

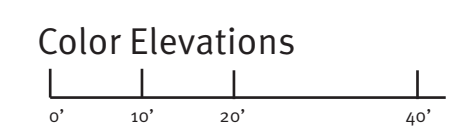
	% Total	% Required
Brick	97%	80%
Stucco	0%	Not to Exceed 20%
Metal Panel	3%	

Glazing % Calculations (North Elevation)

	Gross Sqft	Glazing Sqft	% Total	% Required
Lvl 1 Combined	6309 Sqft	2613 Sqft	41%	65%
Residential Lvl 3	3465 Sqft	1267 Sqft	36%	30%
Residential Lvl 4	3465 Sqft	1267 Sqft	36%	
Residential Lvl 5	2939 Sqft	1267 Sqft	43%	



Downtown McKinney Block A&B
McKinney, TX

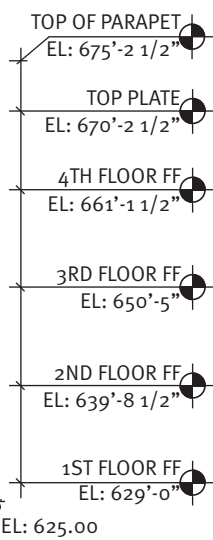


03.19.2018 2015034.00 W

Copyright © JHP 2016
 Not for Regulatory Approval, Permit or Construction: J. Mark Wolf, AIA
 Registered Architect of State of Texas, Registration No. 9129



01 BLOCK A WEST ELEVATION (TENNESSEE ST)



Material % Calculations (Block A)

	% Total	% Required
Brick	94%	80%
Stucco	5%	Not to Exceed 20%
Metal Panel	1%	

Glazing % Calculations (West Elevation)

See Note 3	Gross Sqft	Glazing Sqft	% Total	% Required
Lvl 1 Combined	5134 Sqft	1792 Sqft	34%	65%
Residential Lvl 2	2268 Sqft	505 Sqft	22%	
Residential Lvl 3	3944 Sqft	1259 Sqft	31%	
Residential Lvl 4	3734 Sqft	1259 Sqft	33%	
Residential Lvl 5	1421 Sqft	786 Sqft	55%	

NOTE: 1) Retail HVAC equipment located & screened in private courtyards.
 2) Residential HVAC equipment located on roof courtyard side.
 3) Retail Facade Glazing > 65%

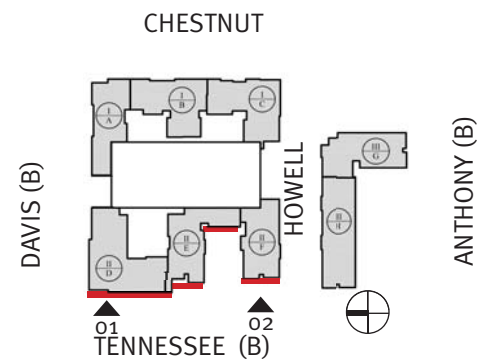
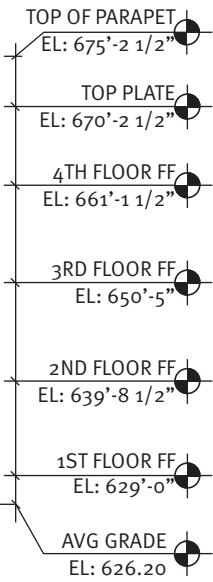
COLOR KEY

- 1 Heron Plume SW 6070
- 2 Mindful Gray SW 7016
- 3 Porpoise SW 7047
- 4 Acme Texas Black
- 5 Acme Desert Tan
- 6 Acme Charcoal Gray
- 7 Acme Princeton
- 8 Cast Stone Band
- 9 PAC-CLAD Zinc Mtl. Panel
- 10 PAC-CLAD Weathered Zinc Mtl. Panel
- 11 Iron Ore SW 7069 Mtl Paint Color
- 12 Dark Bronze Manco Storefront
- 13 Dark Rust Medallion J-Box Cover
- 14 Mindful Gray SW 7016 Elastomeric Coating Fine or Medium Texture Finish
- 15 1x12 Cement Trim Painted Iron Ore SW 7069

NOTE:
 1) ALL MATERIALS AND COLORS TO RETURN TO AN INSIDE CORNER.
 2) ALL VINYL WINDOWS TO BE WHITE.
 3) ALL COLORS, MATERIALS, STOREFRONT, & FINISHES TO BE VERIFIED ON MOCKUP.



02 BLOCK A WEST ELEVATION (TENNESSEE ST)



Downtown McKinney Block A&B
 McKinney, TX



Color Elevations



03.19.2018 2015034.00 W
 Copyright © JHP 2016
 Not for Regulatory Approval, Permit or Construction: J. Mark Wolf, AIA
 Registered Architect of State of Texas, Registration No. 9129



01 BLOCK A SOUTH POOL COURTYARD ELEVATION



02 BLOCK A NORTH POOL COURTYARD ELEVATION

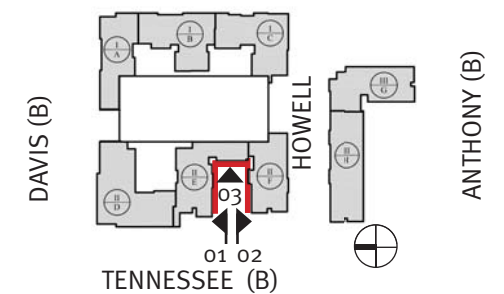


03 BLOCK A WEST POOL COURTYARD ELEVATION

COLOR KEY	
1	Heron Plume SW 6070
2	Mindful Gray SW 7016
3	Porpoise SW 7047
4	Acme Texas Black
5	Acme Desert Tan
6	Acme Charcoal Gray
7	Acme Princeton
8	Cast Stone Band
9	PAC-CLAD Zinc Mtl. Panel
10	PAC-CLAD Weathered Zinc Mtl. Panel
11	Iron Ore SW 7069 Mtl Paint Color
12	Dark Bronze Manco Storefront
13	Dark Rust Medallion J-Box Cover
14	Mindful Gray SW 7016 Elastomeric Coating Fine or Medium Texture Finish
15	1x12 Cement Trim Painted Iron Ore SW 7069

NOTE:
 1) ALL MATERIALS AND COLORS TO RETURN TO AN INSIDE CORNER.
 2) ALL VINYL WINDOWS TO BE WHITE.
 3) ALL COLORS, MATERIALS, STOREFRONT, & FINISHES TO BE VERIFIED ON MOCKUP.

CHESTNUT



Downtown McKinney Block A&B
 McKinney, TX



Color Elevations



03.19.2018 2015034.00 W

Copyright © JHP 2016
 Not for Regulatory Approval, Permit or Construction: J. Mark Wolf, AIA
 Registered Architect of State of Texas, Registration No. 9129



01 BLOCK A SOUTH ELEVATION (HOWELL ST)

COLOR KEY

- 1 Heron Plume SW 6070
- 2 Mindful Gray SW 7016
- 3 Porpoise SW 7047
- 4 Acme Texas Black
- 5 Acme Desert Tan
- 6 Acme Charcoal Gray
- 7 Acme Princeton
- 8 Cast Stone Band
- 9 PAC-CLAD Zinc Mtl. Panel
- 10 PAC-CLAD Weathered Zinc Mtl. Panel
- 11 Iron Ore SW 7069 Mtl Paint Color
- 12 Dark Bronze Manco Storefront
- 13 Dark Rust Medallion J-Box Cover
- 14 Mindful Gray SW 7016 Elastomeric Coating Fine or Medium Texture Finish
- 15 1x12 Cement Trim Painted Iron Ore SW 7069

NOTE:
 1) ALL MATERIALS AND COLORS TO RETURN TO AN INSIDE CORNER.
 2) ALL VINYL WINDOWS TO BE WHITE.
 3) ALL COLORS, MATERIALS, STOREFRONT, & FINISHES TO BE VERIFIED ON MOCKUP.



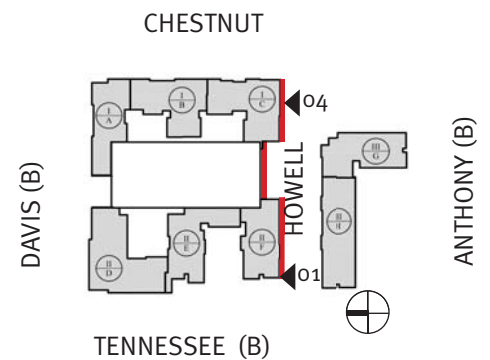
04 BLOCK A SOUTH ELEVATION (HOWELL ST)

Material % Calculations (Block A)

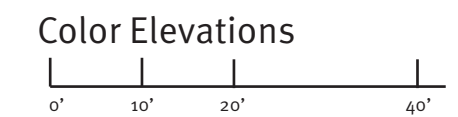
	% Total	% Required
Brick	100%	80%
Stucco	0%	Not to Exceed 20%
Metal Panel	0%	

Glazing % Calculations (South Elevation)

	Gross Sqft	Glazing Sqft	% Total	% Required
Residential Lvl 1	3415 Sqft	700 Sqft	20%	30%
Residential Lvl 2	2827 Sqft	702 Sqft	24%	
Residential Lvl 3	2827 Sqft	702 Sqft	24%	
Residential Lvl 4	2398 Sqft	805 Sqft	33%	



Downtown McKinney Block A&B
 McKinney, TX

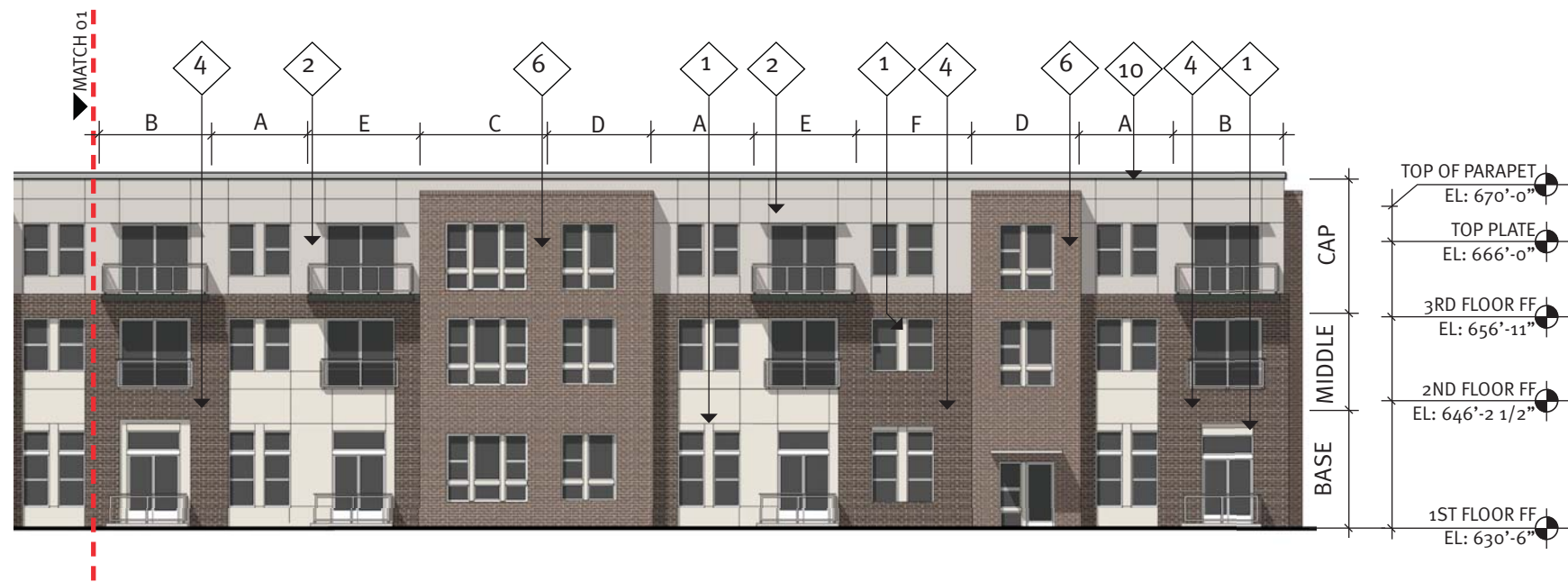


03.19.2018 2015034.00 W

Copyright © JHP 2016
 Not for Regulatory Approval, Permit or Construction: J. Mark Wolf, AIA
 Registered Architect of State of Texas, Registration No. 9129



01 BLOCK B NORTH ELEVATION (HOWELL ST)

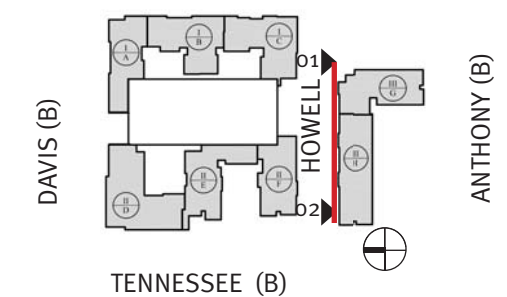


02 BLOCK B NORTH ELEVATION (HOWELL ST)

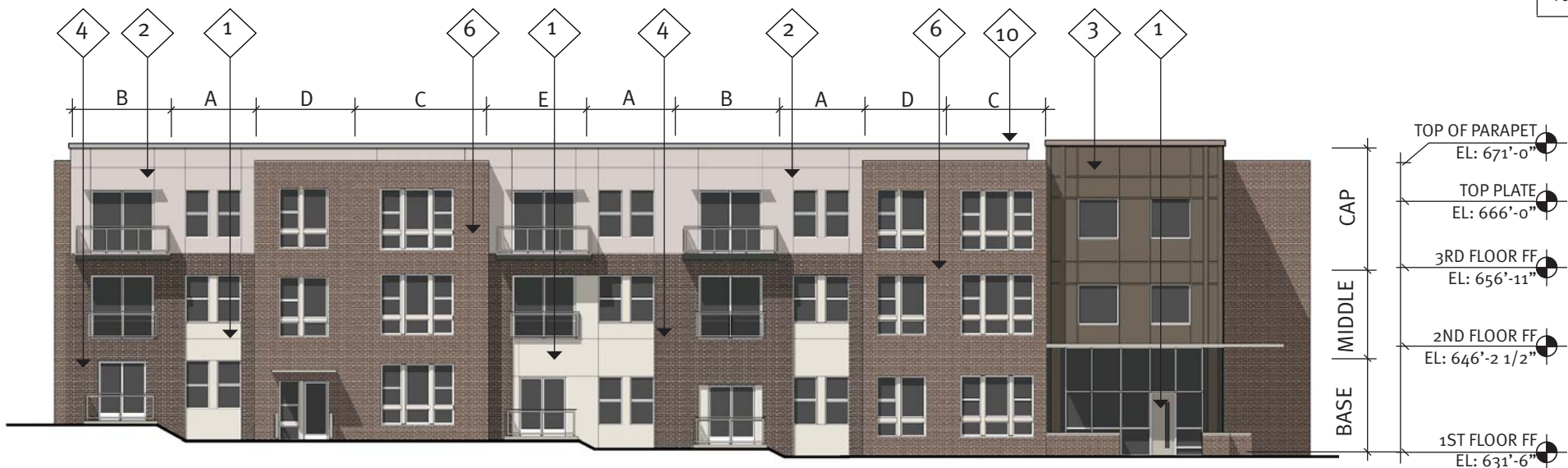
COLOR KEY		
1	[Color swatch]	Heron Plume SW 6070
2	[Color swatch]	Mindful Gray SW 7016
3	[Color swatch]	Porpoise SW 7047
4	[Brick pattern swatch]	Acme Texas Black
5	[Brick pattern swatch]	Acme Desert Tan
6	[Brick pattern swatch]	Acme Charcoal Gray
7	[Brick pattern swatch]	Acme Princeton
8	[Color swatch]	Cast Stone Band
9	[Color swatch]	PAC-CLAD Zinc Mtl. Panel
10	[Color swatch]	PAC-CLAD Weathered Zinc Mtl. Panel
11	[Color swatch]	Iron Ore SW 7069 Mtl Paint Color
12	[Color swatch]	Dark Bronze Manco Storefront
13	[Color swatch]	Dark Rust Medallion J-Box Cover
14	[Color swatch]	Mindful Gray SW 7016 Elastomeric Coating Fine or Medium Texture Finish
15	[Color swatch]	1x12 Cement Trim Painted Iron Ore SW 7069

NOTE:
 1) ALL MATERIALS AND COLORS TO RETURN TO AN INSIDE CORNER.
 2) ALL VINYL WINDOWS TO BE WHITE.
 3) ALL COLORS, MATERIALS, STOREFRONT, & FINISHES TO BE VERIFIED ON MOCKUP.

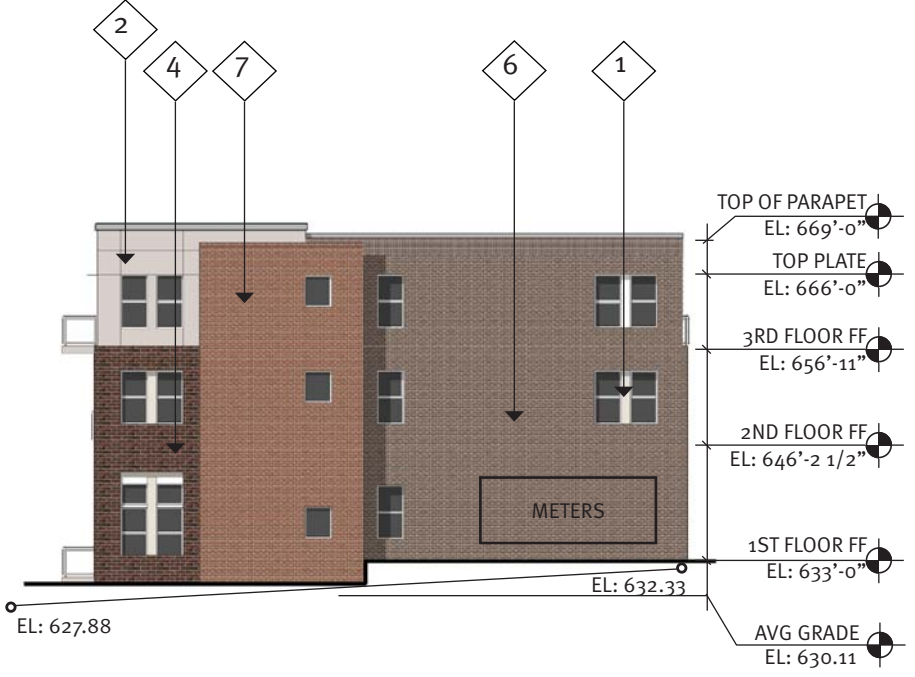
CHESTNUT



Glazing % Calculations (Detail 01)				
	Gross Sqft	Glazing Sqft	% Total	% Required
Facade	5227 Sqft	1858 Sqft	35%	30%



01 BLOCK B EAST ELEVATION (CHESTNUT ST)



02 BLOCK B WEST ELEVATION (TENNESSEE ST)

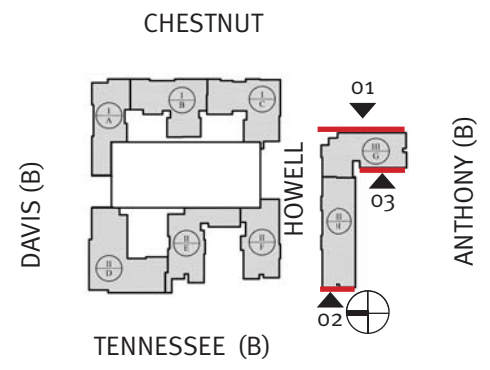


03 BLOCK B WEST ELEVATION (TENNESSEE ST)

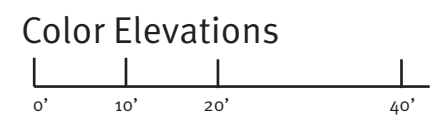
COLOR KEY

- 1 Heron Plume SW 6070
- 2 Mindful Gray SW 7016
- 3 Porpoise SW 7047
- 4 Acme Texas Black
- 5 Acme Desert Tan
- 6 Acme Charcoal Gray
- 7 Acme Princeton
- 8 Cast Stone Band
- 9 PAC-CLAD Zinc Mtl. Panel
- 10 PAC-CLAD Weathered Zinc Mtl. Panel
- 11 Iron Ore SW 7069 Mtl Paint Color
- 12 Dark Bronze Manco Storefront
- 13 Dark Rust Medallion J-Box Cover
- 14 Mindful Gray SW 7016 Elastomeric Coating Fine or Medium Texture Finish
- 15 1x12 Cement Trim Painted Iron Ore SW 7069

NOTE:
 1) ALL MATERIALS AND COLORS TO RETURN TO AN INSIDE CORNER.
 2) ALL VINYL WINDOWS TO BE WHITE.
 3) ALL COLORS, MATERIALS, STOREFRONT, & FINISHES TO BE VERIFIED ON MOCKUP.



Downtown McKinney Block A&B
McKinney, TX



03.19.2018 2015034.00 W

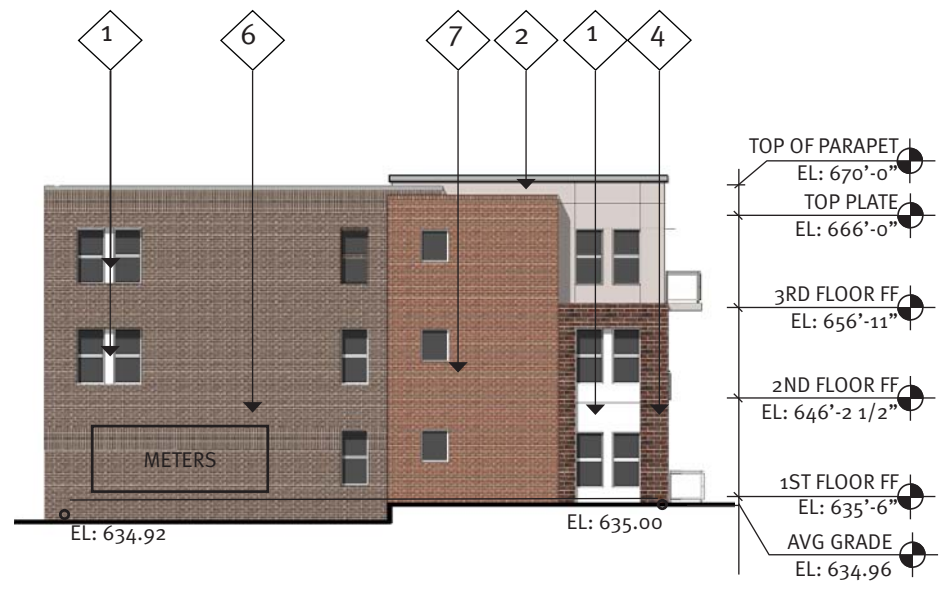
Copyright © JHP 2016
 Not for Regulatory Approval, Permit or Construction: J. Mark Wolf, AIA
 Registered Architect of State of Texas, Registration No. 9129



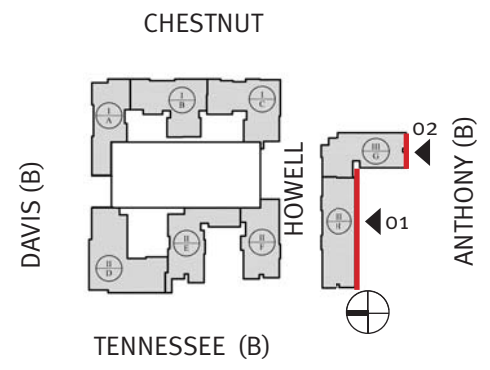
COLOR KEY		
1	[Color swatch]	Heron Plume SW 6070
2	[Color swatch]	Mindful Gray SW 7016
3	[Color swatch]	Porpoise SW 7047
4	[Material swatch]	Acme Texas Black
5	[Material swatch]	Acme Desert Tan
6	[Material swatch]	Acme Charcoal Gray
7	[Material swatch]	Acme Princeton
8	[Material swatch]	Cast Stone Band
9	[Material swatch]	PAC-CLAD Zinc Mtl. Panel
10	[Material swatch]	PAC-CLAD Weathered Zinc Mtl. Panel
11	[Material swatch]	Iron Ore SW 7069 Mtl Paint Color
12	[Material swatch]	Dark Bronze Manco Storefront
13	[Material swatch]	Dark Rust Medallion J-Box Cover
14	[Material swatch]	Mindful Gray SW 7016 Elastomeric Coating Fine or Medium Texture Finish
15	[Material swatch]	1x12 Cement Trim Painted Iron Ore SW 7069

NOTE:
 1) ALL MATERIALS AND COLORS TO RETURN TO AN INSIDE CORNER.
 2) ALL VINYL WINDOWS TO BE WHITE.
 3) ALL COLORS, MATERIALS, STOREFRONT, & FINISHES TO BE VERIFIED ON MOCKUP.

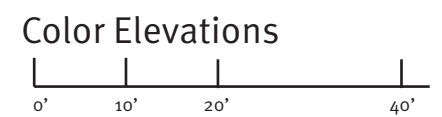
01 BLOCK B SOUTH ELEVATION (ANTHONY ST)



02 BLOCK B SOUTH ELEVATION (ANTHONY ST)



Downtown McKinney Block A&B
 McKinney, TX



03.19.2018 2015034.00 W

Copyright © JHP 2016
 Not for Regulatory Approval, Permit or Construction: J. Mark Wolf, AIA
 Registered Architect of State of Texas, Registration No. 9129