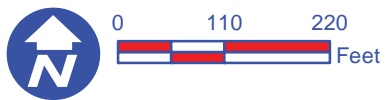
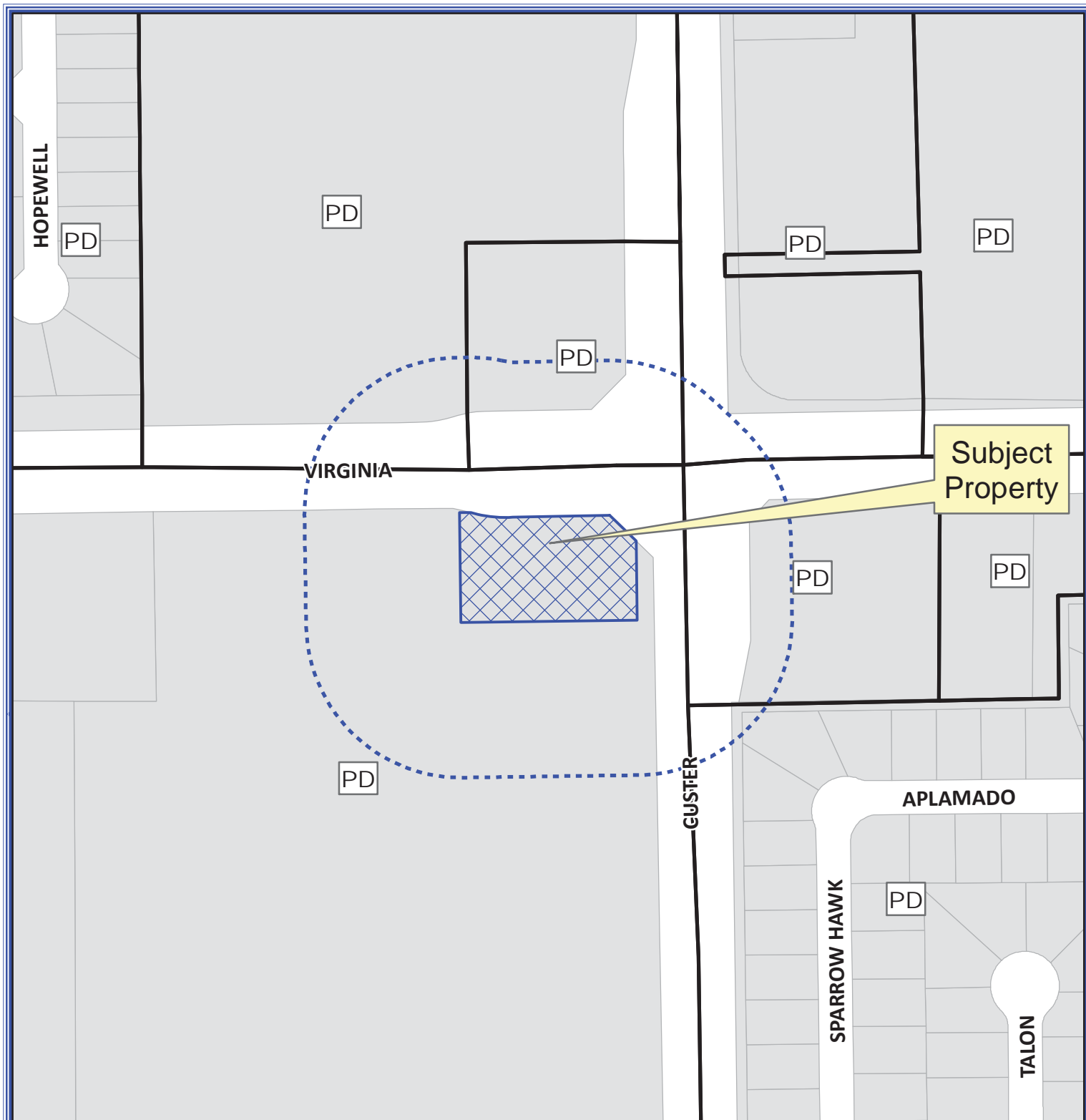


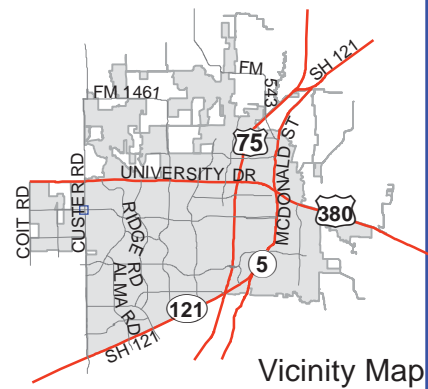
# Exhibit A



## Notification Map

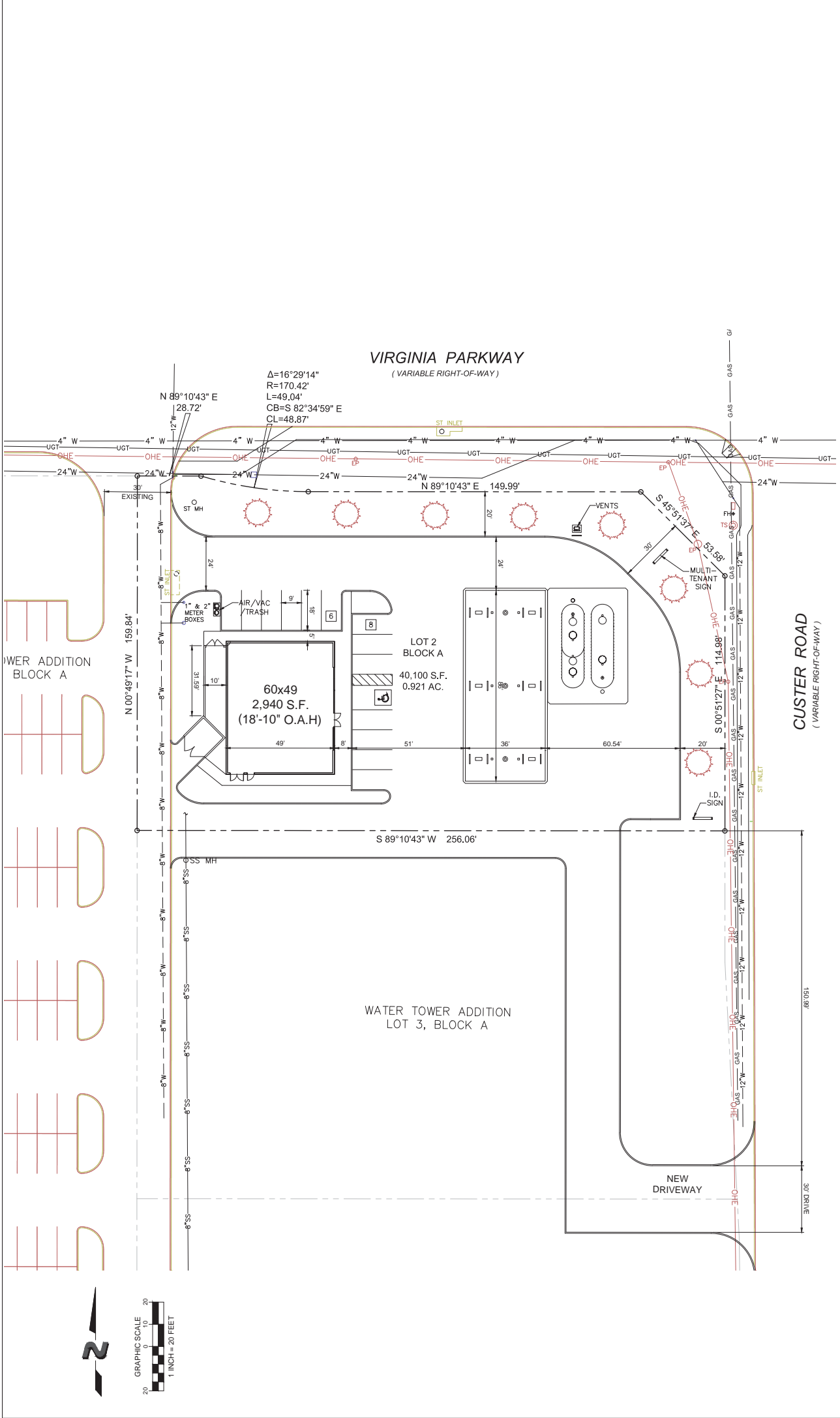
Case: 14-060SUP

--- 200' Notification Buffer



DISCLAIMER: This map and information contained in it were developed exclusively for use by the City of McKinney. Any use or reliance on this map by anyone else is at that party's risk and without liability to the City of McKinney, its officials or employees for any discrepancies, errors, or variances which may exist.

# Exhibit B



**CAUTION NOTICE TO CONTRACTORS**  
 THE CONTRACTOR IS SPECIFICALLY CAUTIONED THAT THE LOCATION AND/OR ELEVATION OF EXISTING UTILITIES SHOWN ON THESE PLANS IS BASED ON RECORDS OF THE VARIOUS UTILITY COMPANIES AND WHERE POSSIBLE, MEASUREMENTS TAKEN IN THE FIELD. THE CONTRACTOR SHALL VERIFY THE LOCATION AND DEPTH OF ALL UTILITIES AT LEAST 48 HOURS BEFORE ANY EXCAVATION TO REQUEST EXACT FIELD LOCATIONS OF THE UTILITIES. IT SHALL BE THE RESPONSIBILITY OF THE CONTRACTOR TO RELOCATE ALL EXISTING UTILITIES WHICH CONFLICT WITH THE PROPOSED IMPROVEMENTS SHOWN ON THESE PLANS.

#	DATE	REVISION DESCRIPTION	BY

project no. 13-005 date 4/19/2014 — 8:46 am dwg 13405 — 7-11 #3709, McKinney, TX — Proposed	drawn by designed by checked by approved by
---	--

**TECHNICAL DIMENSION**  
 ARCHITECTURE • CIVIL ENGINEERING • MEP ENGINEERING • PLANNING  
 10765 Sandhill Road, Dallas, Texas 75238  
 TEL: 214-343-9400 FAX: 214-343-9000 www.TechnicalDimension.com

PROPOSED SITE PLAN  
 WATER TOWER ADDITION  
 LOT 2, BLOCK A  
 MCKINNEY, TEXAS

SHEET  
**SP1**