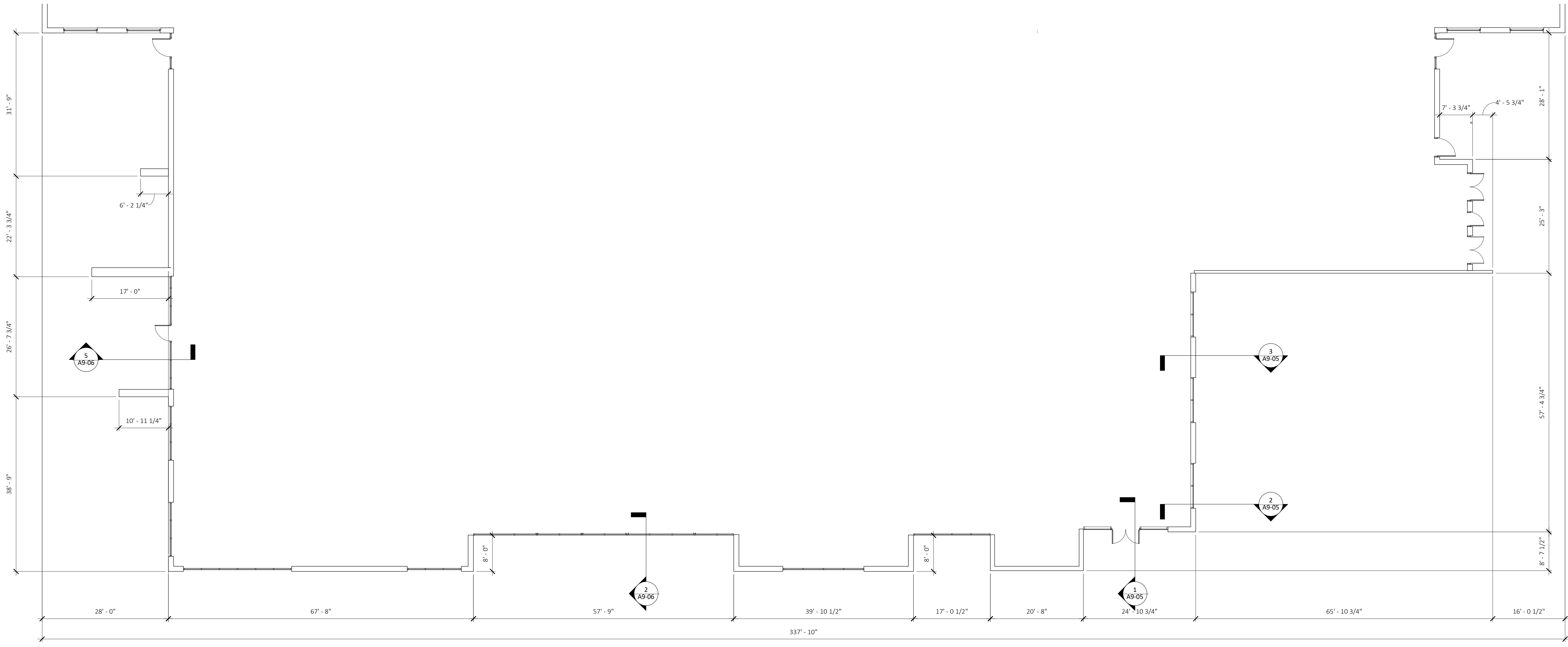
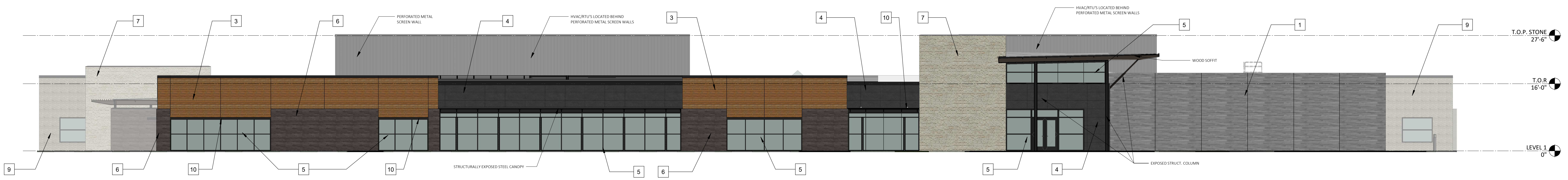


CITY OF MCKINNEY FACADE PLAN SUBMITTAL



**EXTERIOR MATERIALS**

1	BOARD FORMED CONCRETE - FITZGERALD FORMLINERS - 16938
2	GLAZING - GUARDIAN SNG 62/27 (8) CRYSTAL GREY OUTBOARD
3	FIBER CEMENT - NICHBA - VINTAGE WOOD CEDAR
4	ALUMINUM COMPOSITE MATERIAL - CENTRIA INTERCEPT ENTIRE HORIZONTAL - ZINC CHARCOAL GRAY
5	ALUM. STOREFRONT - OLDCASTLE - CHARCOAL GRAY
6	BRICK MASONRY CORSO - CT LOBF
7	STONE VENEER - ARIZONA STONE - CHISELED LIMESTONE CREME
8	ROMAN BRICK TO MATCH CORSO CT LOBF
9	ROMAN BRICK TO MATCH CORONADO CHISELED LIMESTONE CREME
10	METAL SUNSHADE
11	STUCCO

**SOUTH FACADE MATERIAL PERCENTAGES:**

BRICK MASONRY:	18%
CONCRETE:	21%
STONE VENEER:	14%
CENTRIA METAL PANELING:	10%
METAL SCREEN:	20%
PAINTED STEEL:	2%
FIBER CEMENT:	15%

01 EXTERIOR ELEVATION - SOUTH FACADE OFFSETS  
3/32" = 1'-0"

08.21.18

SPRINGSTONE, LLC  
Ken Hoffman  
101 s. 5th St. Suite 3850  
Louisville, KY 40202  
1.502.400.8494  
kenhoffman@spsh.com

**SPRINGSTONE MCKINNEY**  
PROPOSED ARCHITECTURAL ELEVATION  
SITE PLAN CASE # SITE2018-0048

GUIDE Architecture, LLC  
2001 N Lamar Street  
Dallas TX 75202  
1.214.960.9773



CITY OF MCKINNEY FACADE PLAN SUBMITTAL



EXTERIOR MATERIALS	
1	BOARD FORMED CONCRETE - FITZGERALD FORMLINERS - 36938
2	GLAZING - GUARDIAN SX6 62/27 (H3) CRYSTAL GREY OUTBOARD
3	FIBER CEMENT - NICHIA - VINTAGE WOOD CEDAR
4	ALUMINUM COMPOSITE MATERIAL - CENTRIA INTERCEPT ENTIRE HORIZONTAL - ZINC CHARCOAL GRAY
5	ALUM. STOREFRONT - OLDCASTLE - CHARCOAL GRAY
6	BRICK MASONRY CORSO - CT LOBF
7	STONE VENEER - ARIZONA STONE - CHELSEA LIMESTONE CREAM
8	ROMAN BRICK TO MATCH CORSO CT LOBF
9	ROMAN BRICK TO MATCH - COLORADO CHELSEA LIMESTONE CREAM
10	METAL SUNSHADE
11	STUCCO

WEST FACADE MATERIAL PERCENTAGES:	
BRICK MASONRY:	58%
STONE VENEER:	12%
CENTRIA METAL PANELING:	1%
METAL SCREEN:	16%
PAINTED STEEL:	4%
FIBER CEMENT:	9%

1 ELEVATION- EXTERIOR- WEST  
3/32" = 1'-0"

08.21.18





CITY OF MCKINNEY FACADE PLAN SUBMITTAL



EXTERIOR MATERIALS	
1	BOARD FORMED CONCRETE - FITZGERALD FORMLINERS - 16938
2	GLAZING - GUARDIAN SXX 62/27 (#3) CRYSTAL GREY OUTBOARD
3	FIBER CEMENT - NICHHA - VINTAGE WOOD CEDAR
4	ALUMINUM COMPOSITE MATERIAL - CENTRIA - INTERCEPT ENTIRE HORIZONTAL - ZINC CHARCOAL GRAY
5	ALUM. STOREFRONT - OLDCASTLE - CHARCOAL GRAY
6	BRICK MASONRY CORSO - CT LOBF
7	STONE VENEER - ARIZONA STONE - CHISELED LIMESTONE CREAM
8	ROMAN BRICK TO MATCH CORSO CT LOBF
9	ROMAN BRICK TO MATCH CORONADO CHISELED LIMESTONE CREAM
10	METAL SUNSHADE
11	STUCCO

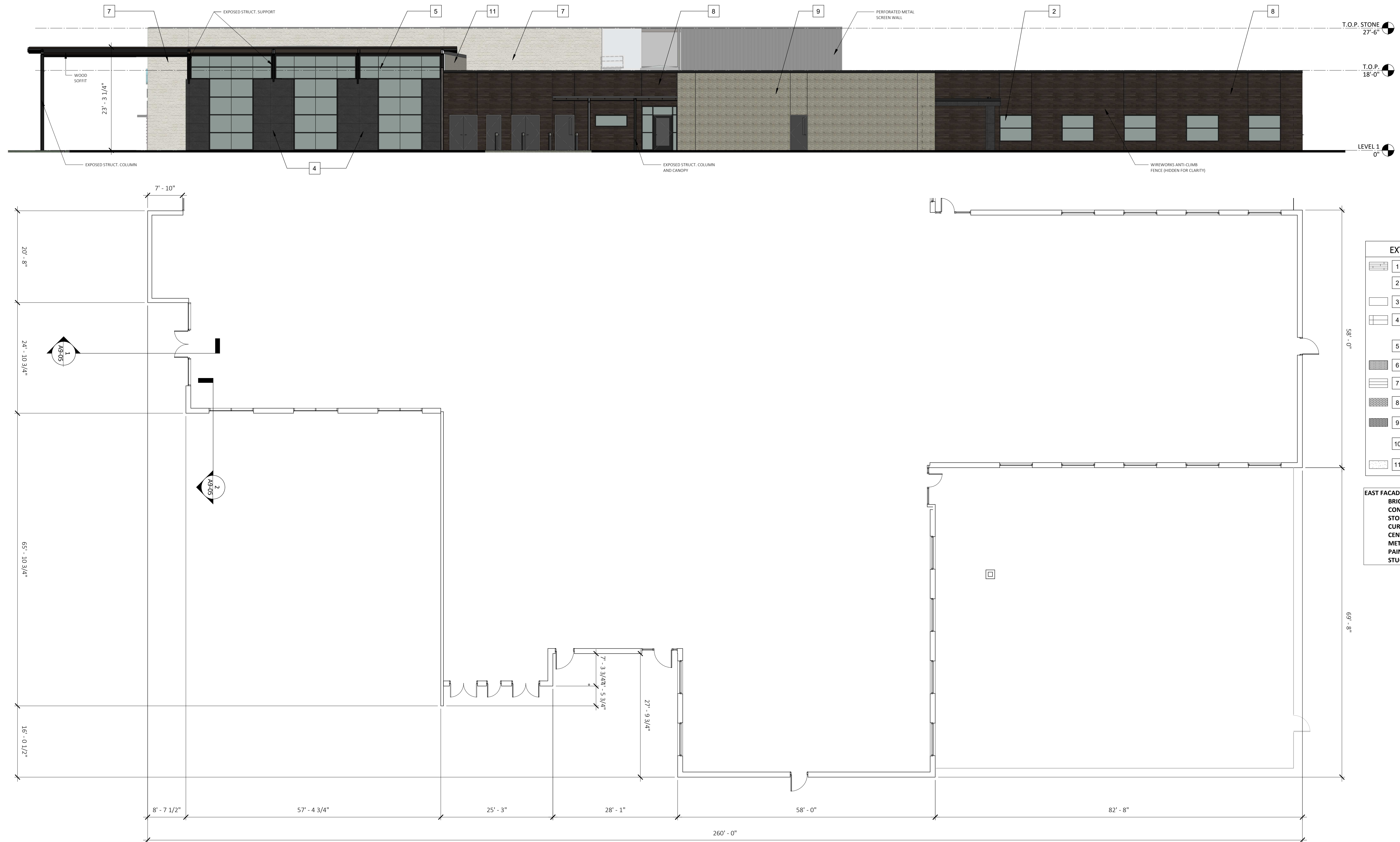
NORTH FACADE MATERIAL PERCENTAGES:	
BRICK MASONRY:	96%
CENTRIA METAL PANELING:	4%

1 ELEVATION- EXTERIOR- NORTH  
3/32" = 1'-0"





CITY OF MCKINNEY FACADE PLAN SUBMITTAL



**EXTERIOR MATERIALS**

1	BOARD FORMED CONCRETE - FITZGERALD FORMLINERS - 16938
2	GLAZING - GUARDIAN SMX 6227 (#3) CRYSTAL GREY OUTBOARD
3	FIBER CEMENT - NICHHA - VINTAGE WOOD CEDAR
4	ALUMINUM COMPOSITE MATERIAL - CENTRIA INTERCEPT (HORIZONTAL) - ZINC CHARCOAL GRAY
5	ALUM. STOREFRONT - OLDCASTLE - CHARCOAL GRAY
6	BRICK MASONRY CORSO - CT LOBF
7	STONE VENEER - ARIZONA STONE - CHISELED LIMESTONE CREME
8	ROMAN BRICK TO MATCH CORSO CT LOBF
9	ROMAN BRICK TO MATCH CORONADO CHISELED LIMESTONE CREAM
10	METAL SUNSHADE
11	STUCCO

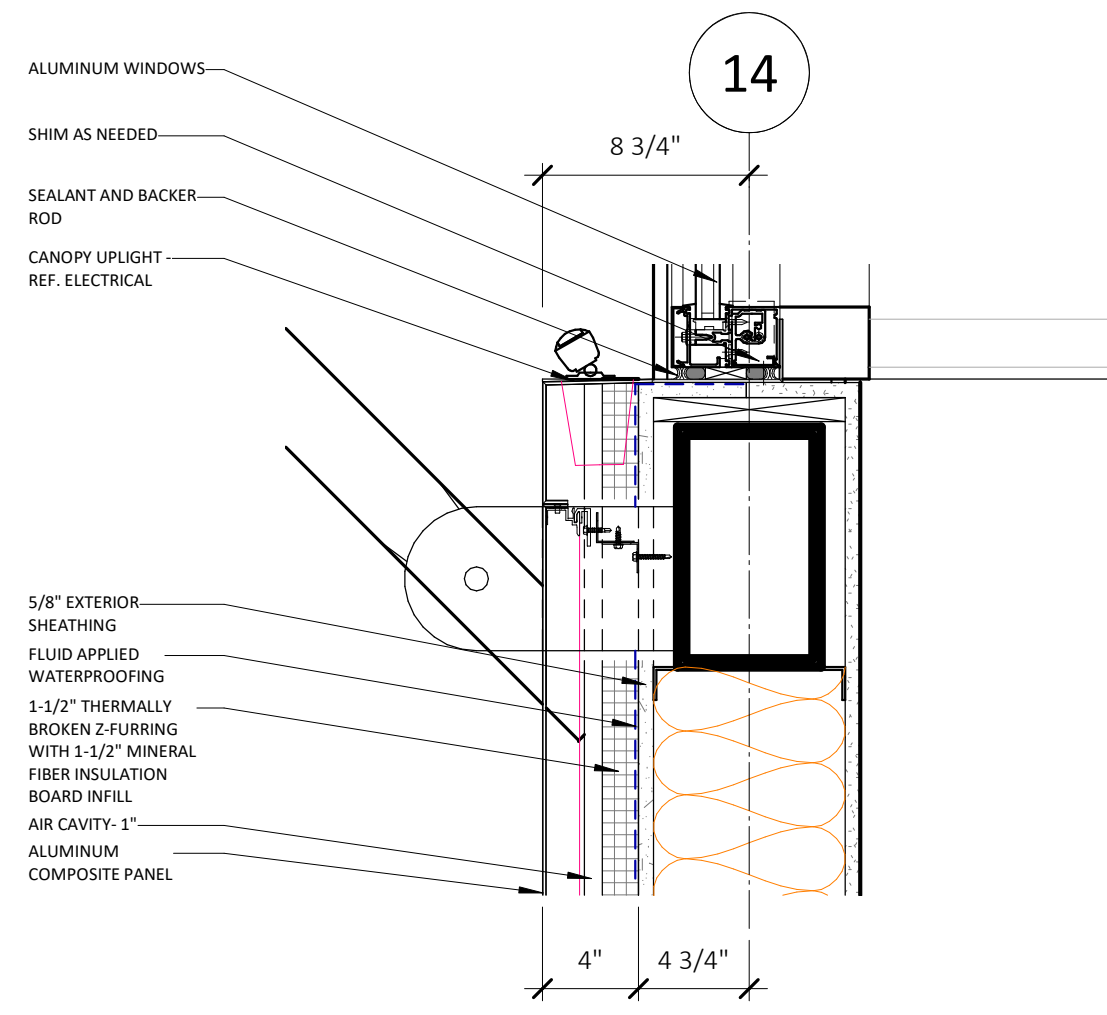
**EAST FACADE MATERIAL PERCENTAGES:**

BRICK MASONRY:	51%
CONCRETE:	1%
STONE VENEER:	14%
CURTAIN WALL:	14%
CENTRIA METAL PANELING:	9%
METAL SUNSHADE:	6%
PAINTED STEEL:	4%
STUCCO:	1%

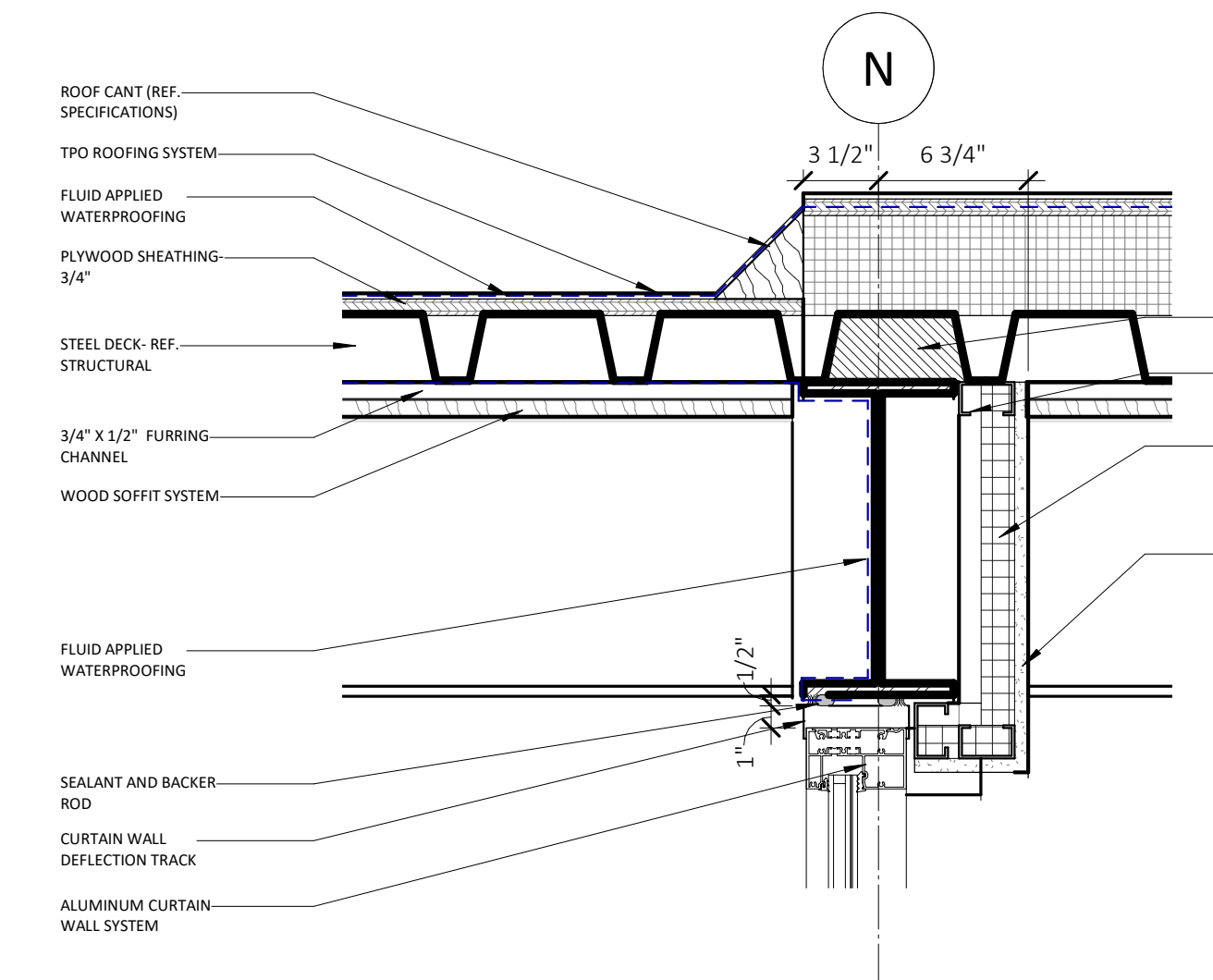
1 ELEVATION- EXTERIOR- EAST  
3/32" = 1'-0"



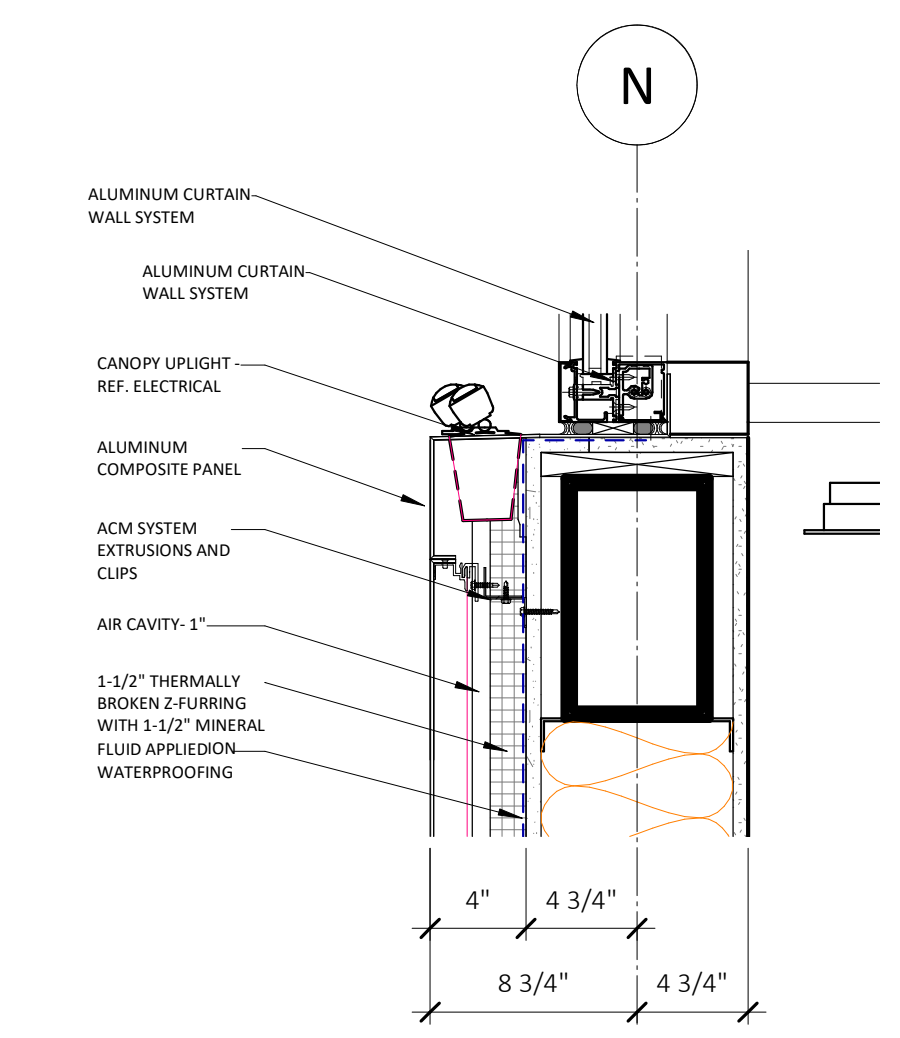
CITY OF MCKINNEY FACADE PLAN SUBMITTAL



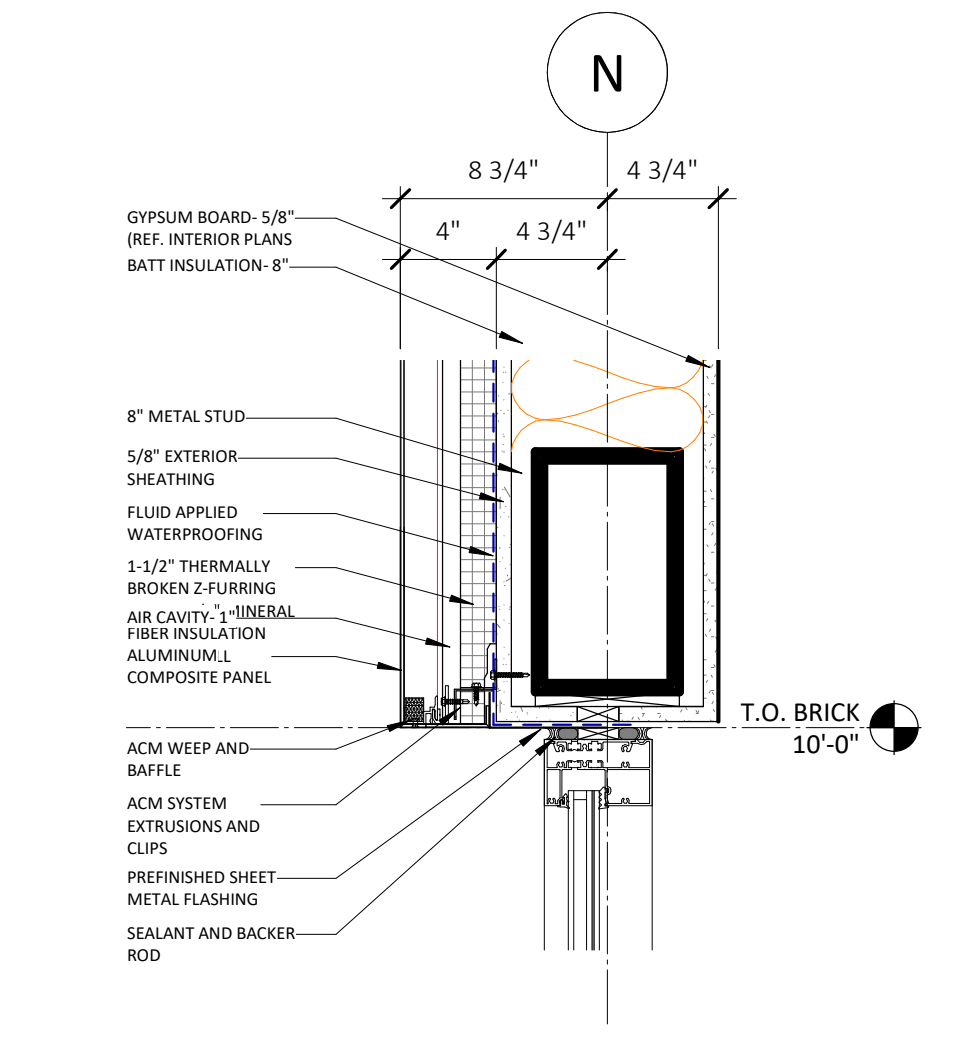
7 MAIN LOBBY EAST @ ACM - Callout 1 Copy 1  
1 1/2" = 1'-0"



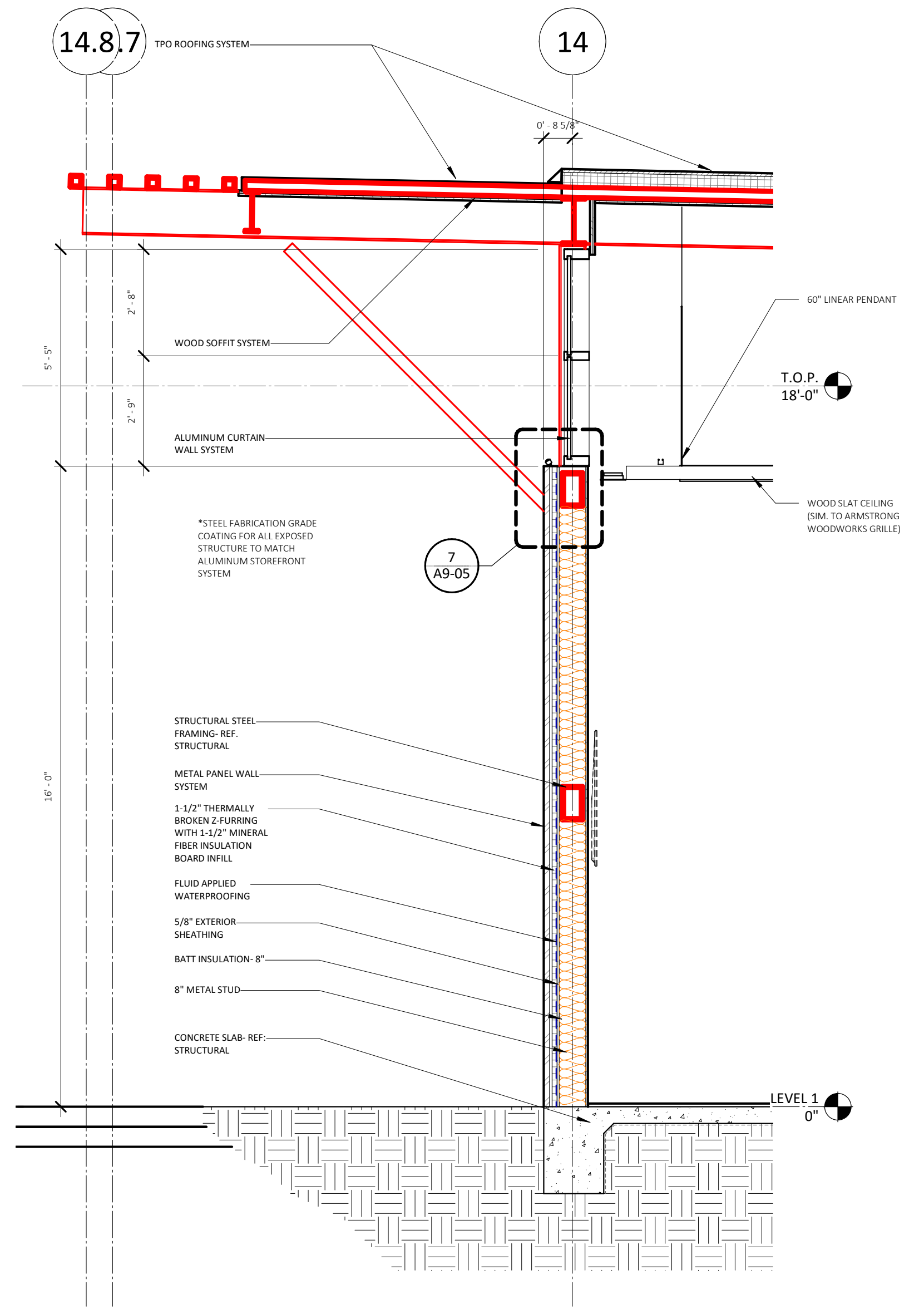
6 STOREFRONT @ HIGH ROOF  
1 1/2" = 1'-0"



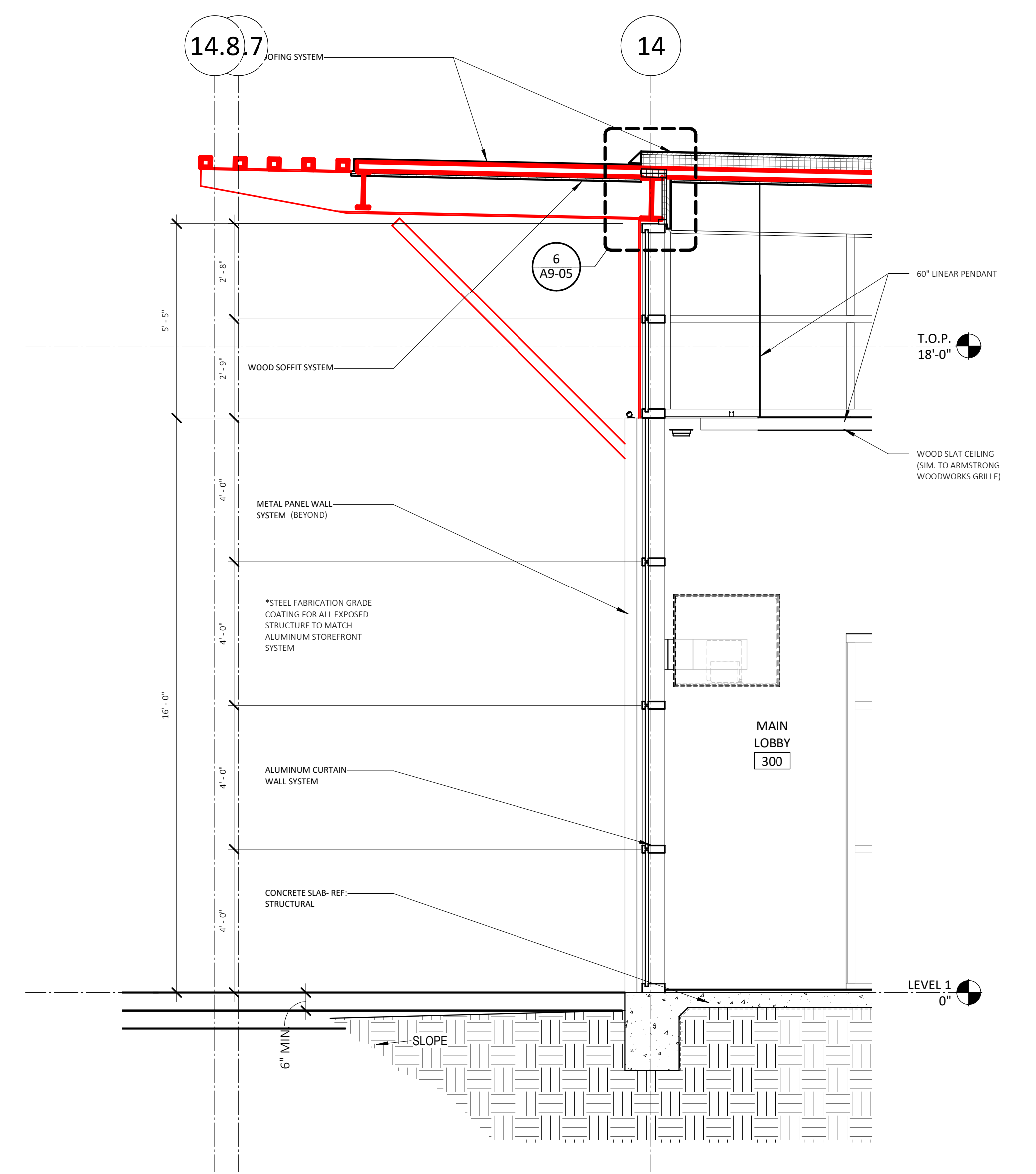
5 STOREFRONT SILL @ ACM  
1 1/2" = 1'-0"



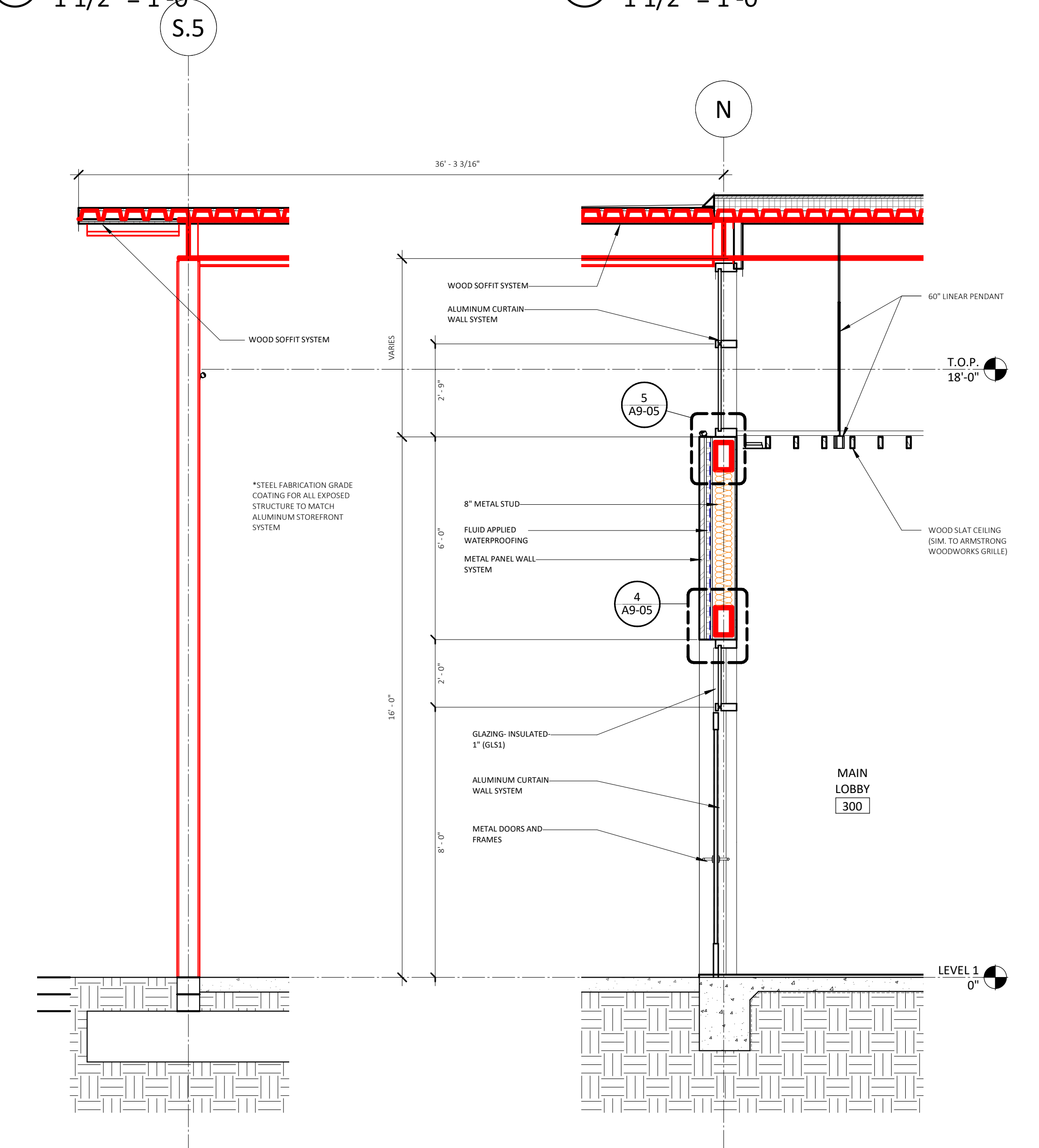
4 STOREFRONT HEAD  
1 1/2" = 1'-0"



3 MAIN LOBBY EAST @ ACM  
3/8" = 1'-0"



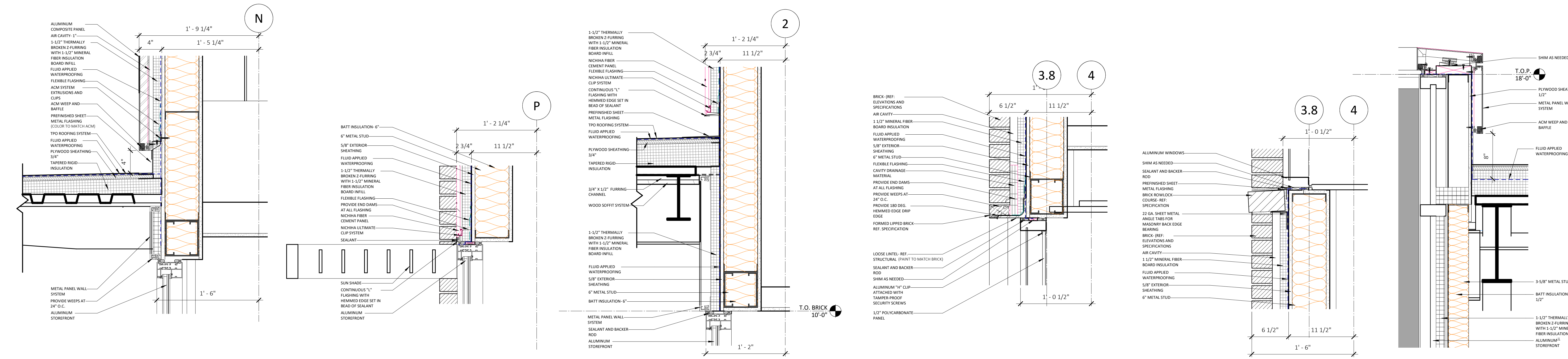
2 MAIN LOBBY EAST  
3/8" = 1'-0"



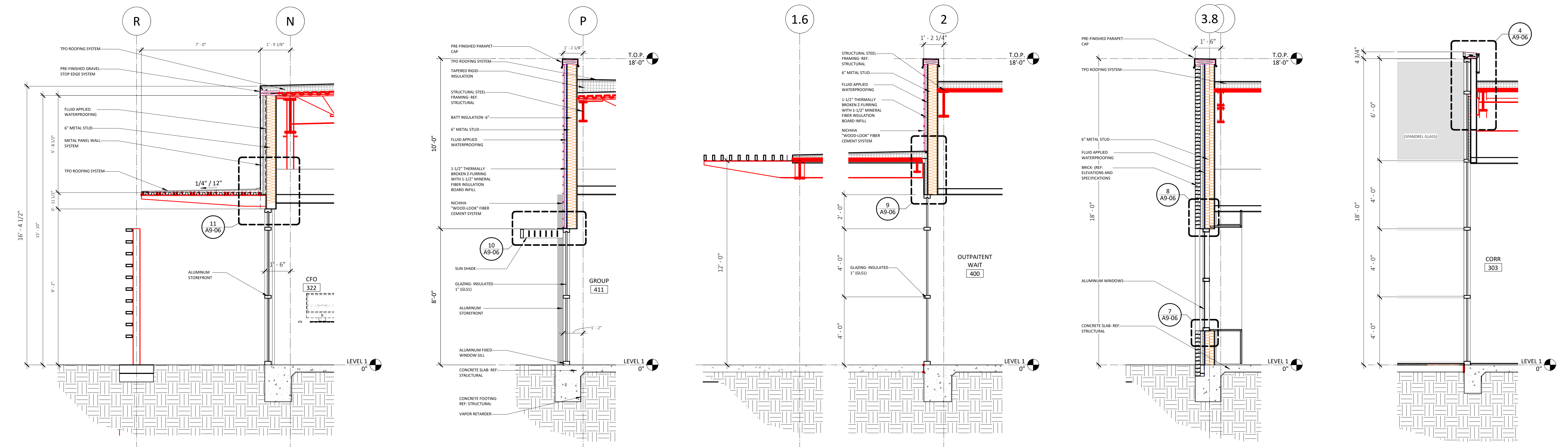
1 MAIN LOBBY ENTRY  
3/8" = 1'-0"



CITY OF MCKINNEY FACADE PLAN SUBMITTAL



⑪ CANOPY AT ACM - HEAD 1 1/2" = 1'-0" | ⑩ CANOPY @ BRICK & NICHIBA - HEAD 1 1/2" = 1'-0" | ⑨ HEAD @ OP CANOPY 1 1/2" = 1'-0" | ⑧ TYPICAL PATIENT ROOM WINDOW - HEAD 1 1/2" = 1'-0" | ⑦ TYPICAL PATIENT ROOM WINDOW - SILL 1 1/2" = 1'-0" | ④ ATRIUM PARAPET CAP 1 1/2" = 1'-0"



② CANOPY AT ACM 3/8" = 1'-0" | ③ CANOPY @ BRICK & NICHIBA 3/8" = 1'-0" | ⑤ OP CANOPY 3/8" = 1'-0" | ⑥ TYPICAL PATIENT ROOM WINDOW 3/8" = 1'-0" | ① ATRIUM SECTION 3/8" = 1'-0"