

Land Use and Tax Base Summary for Module 10

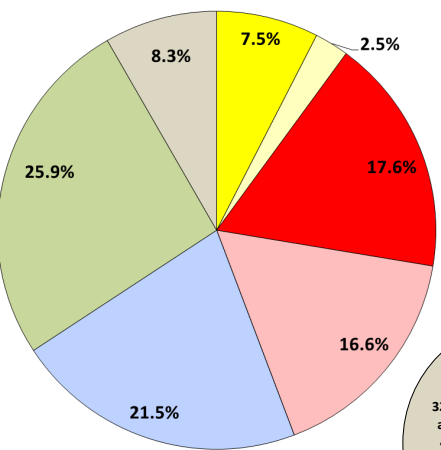
15-066Z Rezoning Request

Land Use Summary

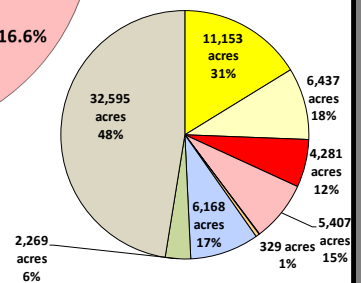
Based on information obtained from the Collin Central Appraisal District's certified tax roll in conjunction with approved zoning requests (for parcels currently undeveloped), below is a summary of existing and anticipated land uses in this module as of January 2014.

	Acres
Residential	165.1
Vacant Residential	55.1
Total Residential	220.2 (10%)
Non-Residential	384.5
Vacant Non-Residential	364.0
Total Non-Residential	748.5 (34.1%)
Mixed-Use	0.0
Vacant Mixed-Use	0.0
Total Mixed-Use¹	0 (0%)
Institutional (non-taxable)	471.0
Total Institutional (non-taxable)	470.9 (21.5%)
Agricultural/Undetermined	567.8
Total Agricultural/Undetermined²	567.8 (25.9%)
Total Acres (city limits only)	2,007.5 (91.6%)
Extraterritorial Jurisdiction (ETJ)	182.1
Total Extraterritorial Jurisdiction³	182.0 (8.3%)
Total Acres	2,189.6

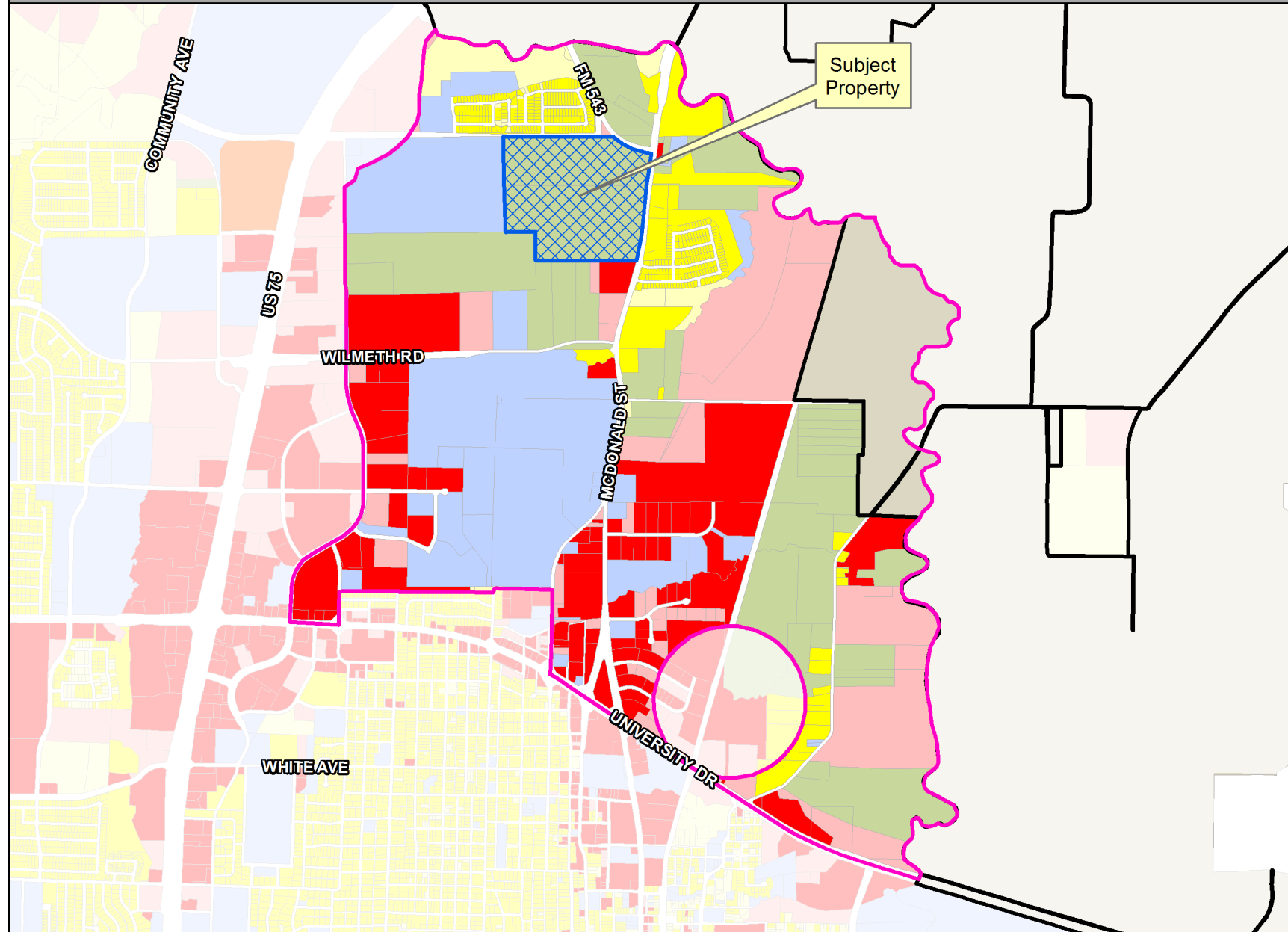
Module 10



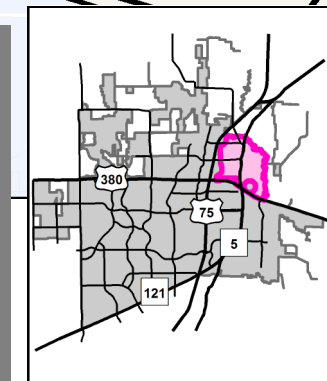
Citywide and ETJ



Module 10 Map



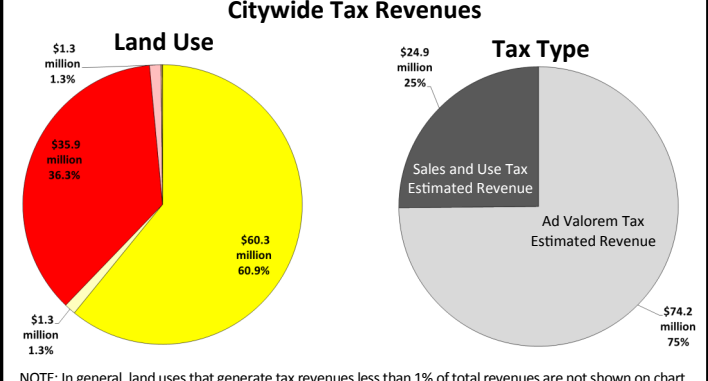
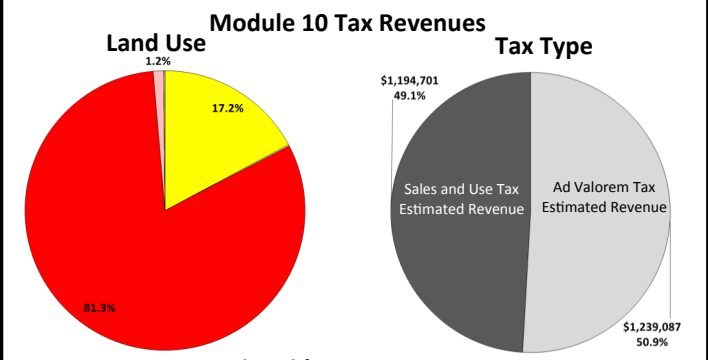
Approved Projects Impacting Land Use or Tax Base (2014, 2015)⁴



Tax Base Summary⁵

Based on the existing land uses in this module, below is a summary of the estimated tax revenues as of January 2014. These revenues are aggregated from Collin Central Appraisal District (for Ad Valorem taxes) and from the Texas Comptroller of Public Accounts (for Sales and Use taxes).

Land Use	Ad Valorem	Sales Tax	Total
Residential	\$ 418,268	\$ -	\$ 418,268
Non-Residential	\$ 783,984	\$ 1,194,701	\$ 1,978,685
Mixed-Use	\$ -	\$ -	\$ -
Tax Revenue from Developed Land	\$ 1,202,252	\$ 1,194,701	\$ 2,396,953
Vacant Residential	\$ 3,752	\$ -	\$ 3,752
Vacant Non-Residential	\$ 29,160	\$ -	\$ 29,160
Vacant Mixed-Use	\$ -	\$ -	\$ -
Agricultural/Undetermined	\$ 3,923	\$ -	\$ 3,923
Tax Revenue from Undeveloped Land	\$ 36,835	\$ -	\$ 36,835
Grand Total (city limits only)	\$ 1,239,087	\$ 1,194,701	\$ 2,433,788



NOTE: In general, land uses that generate tax revenues less than 1% of total revenues are not shown on chart.

1. Mixed-Use land uses reflect those parcels for which zoning allows for residential and/or non-residential horizontal or vertically-integrated uses.
 2. Agricultural/Undetermined land uses reflect those parcels with agricultural zoning for which no future use is currently defined.
 3. Properties located in the ETJ are not included in the Land Use Summary and the Tax Base Summary because they fall outside of the city's land use and taxing jurisdiction.
 4. Zoning, site plan and record plat cases approved after the certified tax roll of January 1, 2014 and change land use and/or vacancy status. These cases are not included in the Land Use Summary or the Tax Base Summary.
 5. Institutional (non-taxable) properties are not included in the Tax Base Summary because these properties do not generate taxes. Estimated tax revenues do not include any property exemptions, delinquencies, etc. and; therefore, may not reflect actual collection amounts.

DISCLAIMER: This map and information contained in it were developed exclusively for use by the City of McKinney. Any use or reliance on this map by anyone else is at that party's risk and without liability to the City of McKinney, its officials or employees for any discrepancies, errors or variances which may exist.