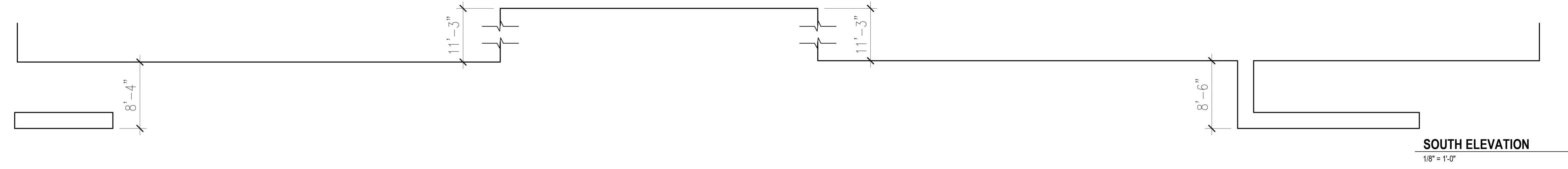




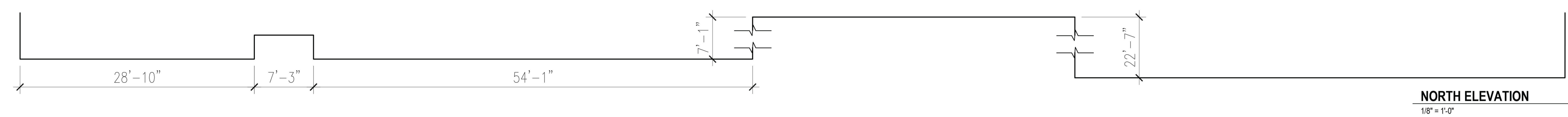
EXTERIOR MATERIAL INDEX		
SOUTH ELEVATION		
MATERIAL	(%)	REQ.
CORONADO STONE PRO-LEDGE COLOR: SIOUX FALLS	25%	50% MIN
NICHIHA VINTAGEWOOD COLOR: CEDAR	39%	
STUCCO	0%	75% 50% MAX
ALLCOBOND METAL PANEL COLOR: RUSSET MICA COOL	17%	
CONCRETE	1%	
GLASS	18%	



SOUTH ELEVATION
1/8" = 1'-0"

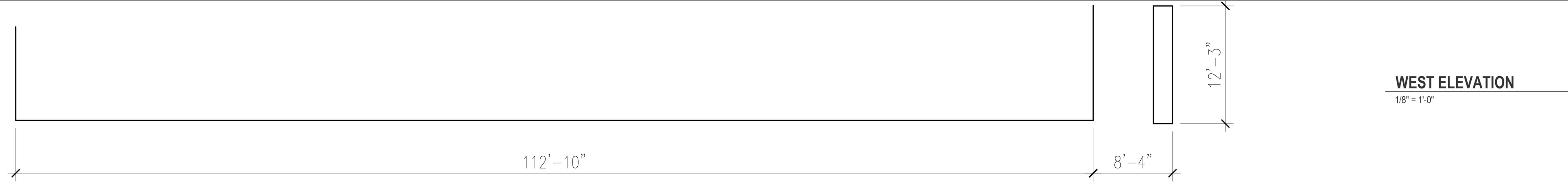


EXTERIOR MATERIAL INDEX		
NORTH ELEVATION		
MATERIAL	(%)	REQ.
CORONADO STONE PRO-LEDGE COLOR: SIOUX FALLS	1%	50% MIN
NICHIHA VINTAGEWOOD COLOR: CEDAR	26%	
STUCCO	49%	99% 50% MAX
ALLCOBOND METAL PANEL COLOR: RUSSET MICA COOL	0%	
CONCRETE	1%	
GLASS	23%	



NORTH ELEVATION
1/8" = 1'-0"





EXTERIOR MATERIAL INDEX			
WEST ELEVATION			
MATERIAL	(%)	REQ.	
CORONADO STONE PRO-LEDGE COLOR: SIOUX FALLS	71%	50% MIN	
NICHIHA VINTAGEWOOD COLOR: CEDAR	11%		
STUCCO	12%	29%	50% MAX
ALLCOBOND METAL PANEL COLOR: RUSSET MICA COOL	6%		
CONCRETE	0%		
GLASS	0%		



EXTERIOR MATERIAL INDEX			
EAST ELEVATION			
MATERIAL	(%)	REQ.	
CORONADO STONE PRO-LEDGE COLOR: SIOUX FALLS	45%	50% MIN	
NICHIHA VINTAGEWOOD COLOR: CEDAR	8%		
STUCCO	43%	55%	50% MAX
ALLCOBOND METAL PANEL COLOR: RUSSET MICA COOL	1%		
CONCRETE	3%		
GLASS	0%		

