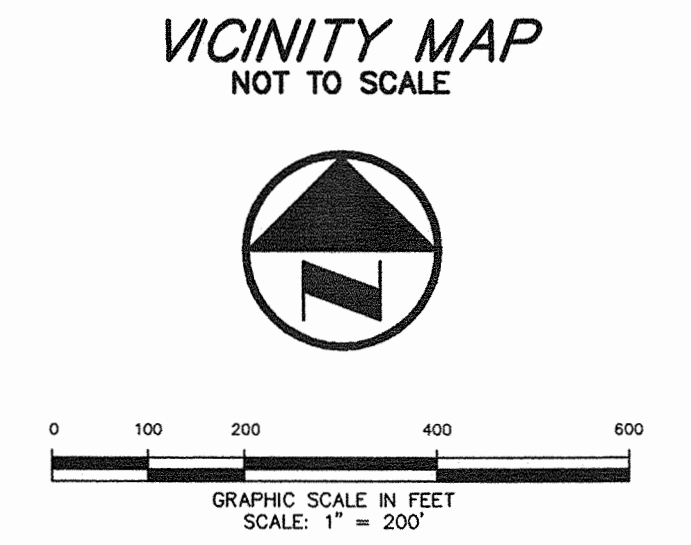
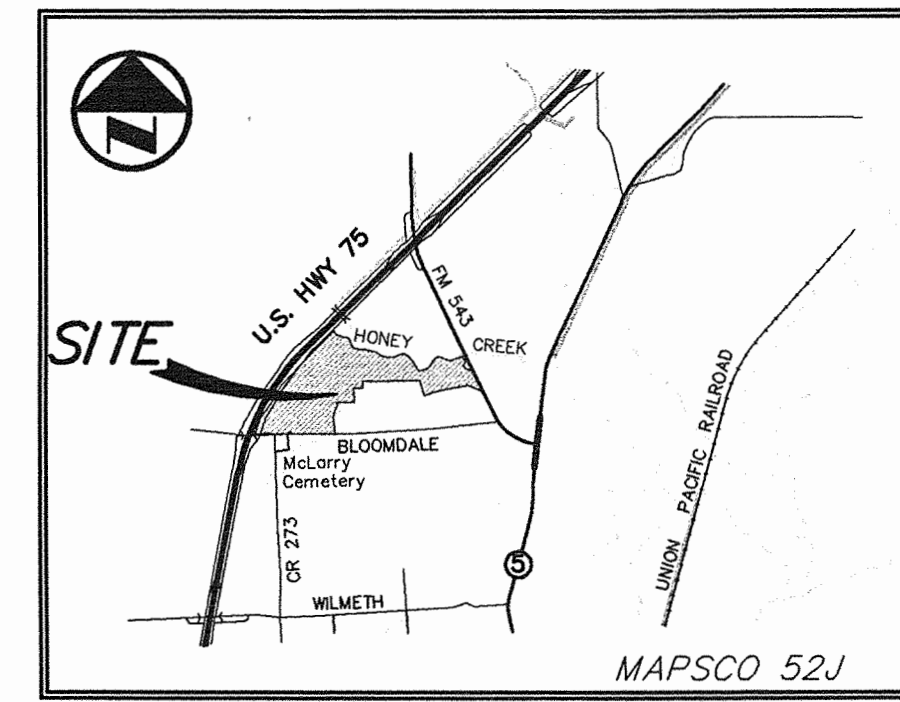
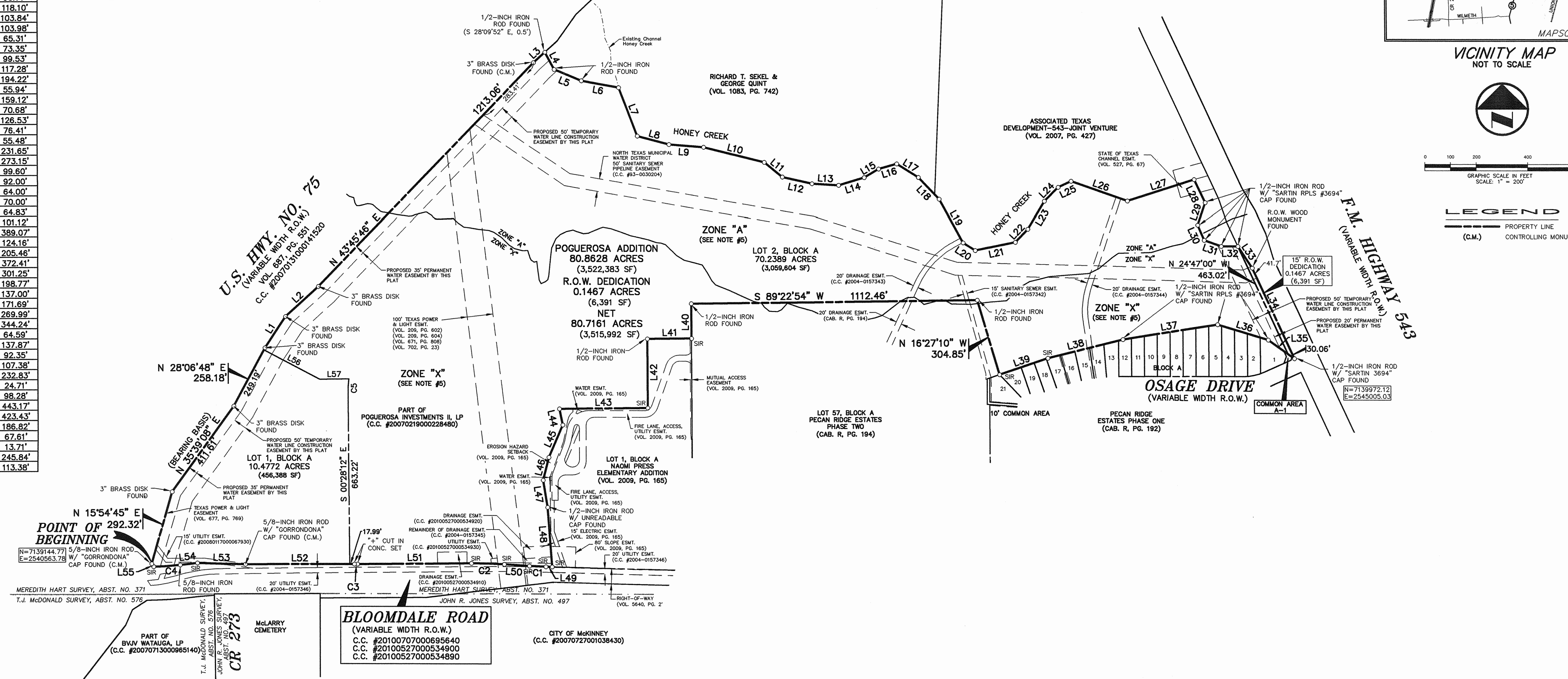


LINE	BEARING	LENGTH
L1	N 33°18'23" E	146.06'
L2	N 47°15'50" E	174.32'
L3	N 47°28'07" E	60.70'
L4	S 28°09'52" E	76.55'
L5	S 67°30'39" E	114.21'
L6	S 79°41'36" E	147.82'
L7	S 20°57'24" E	202.32'
L8	S 74°56'20" E	127.16'
L9	S 85°42'38" E	135.36'
L10	S 75°53'04" E	242.99'
L11	S 50°39'54" E	90.77'
L12	S 77°10'26" E	118.10'
L13	S 86°27'10" E	103.84'
L14	N 73°29'02" E	103.98'
L15	N 59°20'50" E	65.31'
L16	N 74°07'09" E	73.35'
L17	S 57°34'31" E	99.53'
L18	S 43°24'29" E	117.28'
L19	S 28°34'34" E	194.22'
L20	S 57°09'32" E	55.94'
L21	N 78°19'35" E	159.12'
L22	N 43°49'45" E	70.68'
L23	N 30°35'23" E	126.53'
L24	N 44°50'33" E	76.41'
L25	N 64°35'27" E	55.48'
L26	S 70°40'27" E	231.65'
L27	N 71°55'46" E	273.15'
L28	S 25°20'50" E	99.60'
L29	S 18°32'10" W	92.00'
L30	S 22°57'50" E	64.00'
L31	S 70°34'50" E	70.00'
L32	N 89°53'19" E	64.83'
L33	S 33°18'51" E	101.12'
L34	S 24°47'00" E	389.07'
L35	N 54°43'06" W	124.16'
L36	N 73°17'31" W	205.46'
L37	S 80°41'10" W	372.41'
L38	S 75°50'51" W	301.25'
L39	S 71°02'18" W	198.77'
L40	S 00°16'30" E	137.00'
L41	S 89°22'54" W	171.69'
L42	S 00°16'30" E	269.99'
L43	S 89°22'54" W	344.24'
L44	S 11°39'19" E	64.59'
L45	S 23°13'05" W	137.87'
L46	S 13°59'41" W	92.35'
L47	S 09°19'07" E	107.38'
L48	S 04°17'26" E	232.83'
L49	N 89°05'26" W	24.71'
L50	N 86°31'32" W	98.28'
L51	S 89°31'48" W	443.17'
L52	S 89°56'23" W	423.43'
L53	N 88°15'44" W	186.82'
L54	S 83°33'22" W	67.61'
L55	N 34°48'02" W	13.71'
L56	S 61°53'12" E	245.84'
L57	N 89°31'48" E	113.38'

CURVE	DELTA	RADIUS	LENGTH	TANGENT	CHORD BEARING	CHORD
C1	2°06'18"	1740.00'	63.93'	31.97'	N 87°34'41" W	63.92'
C2	3°56'39"	1860.00'	128.04'	64.05'	N 88°29'52" W	128.01'
C3	0°24'35"	1740.00'	12.44'	6.22'	S 89°44'06" W	12.44'
C4	6°03'03"	979.00'	103.39'	51.74'	S 86°34'54" W	103.34'
C5	6°15'41"	550.00'	60.10'	30.08'	S 02°39'39" W	60.07'



- NOTES:
- BEARING SYSTEM FOR THIS SURVEY IS BASED ON A BEARING OF NORTH 35 DEGREES, 39 MINUTES, 08 SECONDS EAST FOR THE SOUTHEAST RIGHT-OF-WAY LINE OF U.S. HIGHWAY NO. 75 ACCORDING TO THE SPECIAL WARRANTY DEED WITH VENDOR'S LIEN TO POGUEROSA INVESTMENTS II, LP RECORDED IN COUNTY CLERK'S FILE NO. 20070219000228480 OF THE DEED RECORDS OF COLLIN COUNTY, TEXAS.
 - CONVEYANCE PLAT ONLY: NOT FOR DEVELOPMENT.
 - A CONVEYANCE PLAT IS A MAP OF PROPERTY APPROVED BY THE CITY FOR THE PURPOSE OF SALE OF CONVEYANCE IN ITS ENTIRETY OF INTERESTS THEREON DEFINED. NO BUILDING PERMIT SHALL BE ISSUED NOR PERMANENT PUBLIC UTILITY SERVICE PROVIDED UNTIL A RECORD PLAT IS FILED FOR RECORD. SELLING A PORTION OF PROPERTY BY METES AND BOUNDS, EXCEPT AS SHOWN ON APPROVED, FILED AND ACCEPTED CONVEYANCE PLAT, RECORD PLAT, MINOR PLAT OR MINOR REPLAT IS A VIOLATION OF THE CITY ORDINANCES AND STATE LAW.
 - COORDINATES SHOWN HEREON ARE STATE PLANE COORDINATES, TEXAS NORTH CENTRAL ZONE, NORTH AMERICAN DATUM OF 1983 (NAD83).
 - SUBJECT PROPERTY IS SHOWN ON THE NATIONAL FLOOD INSURANCE PROGRAM FLOOD INSURANCE RATE MAP FOR COLLIN COUNTY, TEXAS, MAP NO. 48085C0260J, EFFECTIVE DATE: JUNE 2, 2009 AND MAP NO. 48085C0280J, MAP REVISED: JUNE 2, 2009. ALL OF THE SUBJECT PROPERTY IS SHOWN TO BE LOCATED IN ZONE "A" AND ZONE "X" ON SAID MAPS. RELEVANT ZONES ARE DEFINED ON SAID MAPS AS FOLLOWS:
 - ZONE "A" - SPECIAL FLOOD HAZARD AREAS SUBJECT TO INUNDATION BY THE 1% ANNUAL CHANCE FLOOD: NO BASE FLOOD ELEVATIONS DETERMINED.
 - ZONE "X" - OTHER AREAS: AREAS DETERMINED TO BE OUTSIDE THE 0.2% ANNUAL CHANCE FLOODPLAIN.

FUTURE EASEMENT NOTES:

- A 20' WIDE PEDESTRIAN, BICYCLE AND ACCESS EASEMENT SHALL BE REQUIRED FOR A FUTURE DEVELOPER-BUILT CONCRETE HIKE AND BIKE TRAIL LOCATED ALONG THE SOUTH SIDE OF HONEY CREEK. THIS EASEMENT LOCATION SHALL RUN GENERALLY EAST TO WEST FROM U.S. HIGHWAY NO. 75 TO F.M. HIGHWAY NO. 543 AND SHALL BE LOCATED OUTSIDE OF THE EROSION HAZARD SETBACK LINE.
- THE EROSION HAZARD SETBACK LINE SHALL BE ESTABLISHED AT THE TIME OF PLATTING FOR DEVELOPMENT PURPOSES.
- LOT 2 WILL REQUIRE EASEMENTS FOR PUBLIC SERVICES INCLUDING DRAINAGE (STORM SEWER), SANITARY SEWER TO SERVE LOT 1, AS WELL AS EROSION HAZARD SETBACKS, HIKE AND BIKE TRAIL EASEMENTS AND ACCESS EASEMENTS AT THE TIME OF THE PLAT FOR DEVELOPMENT PURPOSES.

"Approved and Accepted"

P & Z Chairman
City of McKinney, Texas

Date

CONVEYANCE PLAT
**POGUEROSA ADDITION
BLOCK A, LOTS 1 AND 2**
LOCATED IN THE CITY OF MCKINNEY, TEXAS
AND BEING OUT OF THE
MEREDITH HART SURVEY, ABSTRACT No. 371
COLLIN COUNTY, TEXAS
SHEET 1 OF 2

PREPARED FOR: POGUEROSA INVESTMENTS II, LP 2600 Eldorado Parkway Suite 115 McKinney, Texas 75070 (214) 548-6056 (PHONE)		PREPARED 05-14-2012 SURVEYED 05-10-2012 SCALE: 1" = 200' PI NUMBER 1520-12-027 DRAWN BY: RLG CHECKED BY: RPP
---	--	---

POGUE 06/08/2012 - 12:07PM - POGUEROSA-CONVEYANCE PLAT.DWG\1520-12-027-CONVEYANCE PLAT.DWG
 N:\ARBS\1500-1590\1520-12-027-027- CONVEYANCE PLAT.DWG
 © POGUE ENGINEERING & DEVELOPMENT COMPANY, INC. 2012. ALL RIGHTS RESERVED. THE ENGINEERING DESIGN, DETAIL AND ENGINEERING DRAWINGS FOR THIS PROJECT AND/OR OVERALL PROJECT ARE THE LEGAL PROPERTY OF POGUE ENGINEERING & DEVELOPMENT COMPANY, INC. THEIR USE FOR REPRODUCTION, CONSTRUCTION, OR DISTRIBUTION IS PROHIBITED UNLESS AUTHORIZED IN WRITING BY POGUE ENGINEERING & DEVELOPMENT COMPANY, INC.

OWNER'S CERTIFICATE

STATE OF TEXAS ~
COUNTY OF COLLIN ~

WHEREAS, Poguerosa Investments II, LP is the owner of an 80.8628 acre tract of land situated in the Meredith Hart Survey, Abstract No. 371, Collin County, Texas; said tract being part of that certain tract of land described in Special Warranty Deed With Vendor's Lien to Poguerosa Investments II, LP recorded in County Clerk's File No. 20070219000228480 of the Deed Records of Collin County, Texas; said 80.8628 acre tract being more particularly described as follows:

BEGINNING, at a 5/8-inch iron rod with "GORRONDONA" cap found at the north end of a right-of-way corner clip at the intersection of the easterly right-of-way line of U.S. Highway No. 75 (a variable width right-of-way) and the north right-of-way line of Bloomdale Road (a variable width right-of-way);

THENCE, in a northeasterly direction, along the said easterly line of U.S. Highway No. 75 and the westerly line of said Poguerosa tract, the following seven (7) calls:

- North 15 degrees, 54 minutes, 45 seconds East, a distance of 292.32 feet to a 3-inch brass disk found at an angle point;
North 35 degrees, 39 minutes, 08 seconds East, a distance of 411.61 feet to a 3-inch brass disk found at an angle point;
North 28 degrees, 06 minutes, 48 seconds East, a distance of 258.18 feet to a 3-brass disk found at an angle point;
North 33 degrees, 18 minutes, 23 seconds East, a distance of 146.06 feet to a 3-inch brass disk found at an angle point;
North 47 degrees, 15 minutes, 50 seconds East, a distance of 174.32 feet to a 3-inch brass disk found at an angle point;
North 43 degrees, 45 minutes, 46 seconds East, a distance of 1213.06 feet to a 3-inch brass disk found at an angle point;
North 47 degrees, 28 minutes, 07 seconds East, a distance of 60.70 feet to a point at the northwest corner of said Poguerosa tract;

THENCE, departing the said easterly line of U.S. Highway No. 75 and said westerly line of Poguerosa tract and along the north line of said Poguerosa tract, the following three (3) calls:

- South 28 degrees, 09 minutes, 52 seconds East, at a distance of 0.5 feet passing a 1/2-inch iron rod found, continuing in all a total distance of 76.55 feet to a 1/2-inch iron rod found at an angle point;
South 67 degrees, 30 minutes, 39 seconds East, a distance of 114.21 feet to a 1/2-inch iron rod found at an angle point;
South 79 degrees, 41 minutes, 36 seconds East, a distance of 147.82 feet to a point for corner; said point being in the center of the existing channel of Honey Creek;

THENCE, in an easterly direction, along the said north line of Poguerosa tract and existing channel of said Honey Creek, the following twenty one (21) calls:

- South 20 degrees, 57 minutes, 24 seconds East, a distance of 202.32 feet to an angle point;
South 74 degrees, 56 minutes, 20 seconds East, a distance of 127.16 feet to an angle point;
South 85 degrees, 42 minutes, 38 seconds East, a distance of 135.36 feet to an angle point;
South 75 degrees, 53 minutes, 04 seconds East, a distance of 242.99 feet to an angle point;
South 50 degrees, 39 minutes, 54 seconds East, a distance of 90.77 feet to an angle point;
South 77 degrees, 10 minutes, 26 seconds East, a distance of 118.10 feet to an angle point;
South 86 degrees, 27 minutes, 10 seconds East, a distance of 103.84 feet to an angle point;
North 73 degrees, 29 minutes, 02 seconds East, a distance of 103.98 feet to an angle point;
North 59 degrees, 20 minutes, 50 seconds East, a distance of 65.31 feet to an angle point;
North 74 degrees, 07 minutes, 09 seconds East, a distance of 73.35 feet to an angle point;
South 57 degrees, 34 minutes, 31 seconds East, a distance of 99.53 feet to an angle point;
South 43 degrees, 24 minutes, 29 seconds East, a distance of 117.28 feet to an angle point;
South 28 degrees, 34 minutes, 34 seconds East, a distance of 194.22 feet to an angle point;
South 57 degrees, 09 minutes, 32 seconds East, a distance of 55.94 feet to an angle point;
North 78 degrees, 19 minutes, 35 seconds East, a distance of 159.12 feet to an angle point;
North 43 degrees, 49 minutes, 45 seconds East, a distance of 70.68 feet to an angle point;
North 30 degrees, 35 minutes, 23 seconds East, a distance of 126.53 feet to an angle point;
North 44 degrees, 50 minutes, 33 seconds East, a distance of 76.41 feet to an angle point;
North 64 degrees, 35 minutes, 27 seconds East, a distance of 55.48 feet to an angle point;
South 70 degrees, 40 minutes, 27 seconds East, a distance of 231.65 feet to an angle point;
North 71 degrees, 55 minutes, 46 seconds East, a distance of 273.15 feet to a point for corner;

THENCE, departing the existing channel of said Honey Creek and continuing along the said north line of Poguerosa tract, the following five (5) calls:

- South 25 degrees, 20 minutes, 50 seconds East, a distance of 99.60 feet to a 1/2-inch iron rod with "SARTIN RPLS #3694" cap found at an angle point;
South 18 degrees, 32 minutes, 10 seconds West, a distance of 92.00 feet to a 1/2-inch iron rod with "SARTIN RPLS #3694" cap found at an angle point;
South 22 degrees, 57 minutes, 50 seconds East, a distance of 64.00 feet to a 1/2-inch iron rod with "SARTIN RPLS #3694" cap found at an angle point;
South 70 degrees, 34 minutes, 50 seconds East, a distance of 70.00 feet to a 1/2-inch iron rod with "SARTIN RPLS #3694" cap found at an angle point;
North 89 degrees, 53 minutes, 19 seconds East, a distance of 64.83 feet to a 1/2-inch iron rod with "SARTIN RPLS #3694" cap found for corner in the southwest right-of-way line of F.M. Highway 543 (a variable width right-of-way);

THENCE, along the said southwest line of F.M. Highway 543 and an easterly line of said Poguerosa tract, the following two (2) calls:

- South 33 degrees, 18 minutes, 51 seconds East, a distance of 101.12 feet to a wood right-of-way monument found at an angle point;
South 24 degrees, 47 minutes, 00 seconds East, a distance of 389.07 feet to a 1/2-inch iron rod with "SARTIN RPLS #3694" cap found for corner; said point also being at the intersection of the said southwest line of F.M. Highway 543 and the northerly right-of-way line of Osage Drive (a variable width right-of-way);

THENCE, North 54 degrees, 43 minutes, 06 seconds West, departing the said southwest line of F.M. Highway 543 and along the said northerly line of Osage Drive and a south line of said Poguerosa tract, at a distance of 10.99 feet passing an angle point in the said northerly line of Osage Drive and the northeast corner of Block A, Pecan Ridge Estates, Phase One, an addition to the City of McKinney, Texas according to the plat recorded in Cabinet R, Page 192 of the Plat Records of Collin County, Texas, continuing along the common line between said Poguerosa tract and said Block A, a distance of 124.16 feet to a 1/2-inch iron rod with "SARTIN RPLS #3694" cap found at an angle point;

THENCE, continuing along the said common line between Poguerosa tract and Block A, the following four (4) calls:

- North 73 degrees, 17 minutes, 31 seconds West, a distance of 205.46 feet to a 1/2-inch iron rod with "SARTIN RPLS #3694" cap found at an angle point;
South 80 degrees, 41 minutes, 10 seconds West, a distance of 372.41 feet to a 1/2-inch iron rod with "SARTIN RPLS #3694" cap found at an angle point;
South 75 degrees, 50 minutes, 51 seconds West, a distance of 301.25 feet to a 5/8-inch iron rod with "Pogue Eng & Dev" cap set at an angle point;
South 71 degrees, 02 minutes, 18 seconds West, a distance of 198.77 feet to a 5/8-inch iron rod with "Pogue Eng & Dev" cap set for corner; said point also being the easternmost corner of Lot 57, Block A, Pecan Ridge Estates, Phase Two, an addition to the City of McKinney, Texas according to the plat recorded in Cabinet R, Page 194 of the said Plat Records;

THENCE, departing the said common line between Poguerosa tract and Block A and along the common line between said Poguerosa tract and said Lot 57, Block A, the following three (3) calls:

- North 16 degrees, 27 minutes, 10 seconds West, a distance of 304.85 feet to a 1/2-inch iron rod found for corner; said point also being the northeast corner of said Lot 57, Block A;
South 89 degrees, 22 minutes, 54 seconds West, a distance of 1112.46 feet to a 1/2-inch iron rod found for corner; said point also being the northwest corner of said Lot 57, Block A;
South 00 degrees, 16 minutes, 30 seconds East, a distance of 137.00 feet to a 5/8-inch iron rod with "Pogue Eng & Dev" cap set for corner; said point also being the northeast corner of Lot 1, Block A, Naomi Press Elementary Addition, an addition to the City of McKinney, Texas according to the plat recorded in Volume 2009, Page 165 of the said Plat Records;

THENCE, departing the said common line between Poguerosa tract and Lot 57, Block A and along the common line between said Poguerosa tract and said Lot 1, Block A, the following eight (8) calls:

- South 89 degrees, 22 minutes, 54 seconds West, a distance of 171.69 feet to a 1/2-inch iron rod found for corner;
South 00 degrees, 16 minutes, 30 seconds East, a distance of 269.99 feet to a 5/8-inch iron rod with "Pogue Eng & Dev" cap set for corner;
South 89 degrees, 22 minutes, 54 seconds West, a distance of 344.24 feet to a point for corner;
South 11 degrees, 39 minutes, 19 seconds East, a distance of 64.59 feet to an angle point;
South 23 degrees, 13 minutes, 05 seconds West, a distance of 137.87 feet to an angle point;
South 13 degrees, 59 minutes, 41 seconds West, a distance of 92.35 feet to an angle point;
South 09 degrees, 19 minutes, 07 seconds East, a distance of 107.38 feet to a 1/2-inch iron rod with unreadable cap found at an angle point;
South 04 degrees, 17 minutes, 26 seconds East, a distance of 232.83 feet to a 5/8-inch iron rod with "Pogue Eng & Dev" cap found for corner in the said north line of Bloomdale Road; said point also being the southwest corner of said Lot 1, Block A;

THENCE, departing the said common line between Poguerosa tract and Lot 1, Block A and along the said north line of Bloomdale Road, the following ten (10) calls:

- North 89 degrees, 05 minutes, 26 seconds West, a distance of 24.71 feet to a 5/8-inch iron rod with "Pogue Eng & Dev" cap set at the beginning of a non-tangent curve to the right;
In a westerly direction, along said curve to the right, having a central angle of 02 degrees, 06 minutes, 18 seconds, a radius of 1740.00 feet, a chord bearing and distance of North 87 degrees, 34 minutes, 41 seconds West, 63.92 feet, an arc distance of 63.93 feet to a 5/8-inch iron rod with "Pogue Eng & Dev" cap set at the end of said curve;
North 86 degrees, 31 minutes, 32 seconds West, a distance of 98.28 feet to a 5/8-inch iron rod with "Pogue Eng & Dev" cap set at the beginning of a tangent curve to the left;
In a westerly direction, along said curve to the left, having a central angle of 03 degrees, 56 minutes, 39 seconds, a radius of 1860.00 feet, a chord bearing and distance of North 88 degrees, 29 minutes, 52 seconds West, 128.01 feet, an arc distance of 128.04 feet to a 5/8-inch iron rod with "Pogue Eng & Dev" cap set at the end of said curve;
South 89 degrees, 31 minutes, 48 seconds West, a distance of 443.17 feet to a "+" cut in concrete set at the beginning of a tangent curve to the right;
In a westerly direction, along said curve to the right, having a central angle of 00 degrees, 24 minutes, 35 seconds, a radius of 1740.00 feet, a chord bearing and distance of South 89 degrees, 44 minutes, 06 seconds West, 12.44 feet, an arc distance of 12.44 feet to a "+" cut in concrete set at the end of said curve;
South 89 degrees, 56 minutes, 23 seconds West, a distance of 423.43 feet to a 5/8-inch iron rod with "GORRONDONA" cap found at an angle point;
North 88 degrees, 15 minutes, 44 seconds West, a distance of 186.82 feet to a 5/8-inch iron rod with "Pogue Eng & Dev" cap set at an angle point;
South 83 degrees, 33 minutes, 22 seconds West, a distance of 67.61 feet to a 5/8-inch iron rod found at the beginning of a tangent curve to the right;
In a westerly direction, along said curve to the right, having a central angle of 06 degrees, 03 minutes, 03 seconds, a radius of 979.00 feet, a chord bearing and distance of South 86 degrees, 34 minutes, 54 seconds West, 103.34 feet, an arc distance of 103.39 feet to a 5/8-inch iron rod with "Pogue Eng & Dev" cap set for corner at the end of said curve; said point also being at the south end of said right-of-way corner clip;

THENCE, North 34 degrees, 48 minutes, 02 seconds West, departing the said north line of Bloomdale Road and along the said right-of-way corner clip, a distance of 13.71 feet to the POINT OF BEGINNING;

CONTAINING, 3,522,383 square feet or 80.8628 acres of land, more or less.

OWNER'S DEDICATION

STATE OF TEXAS ~
COUNTY OF COLLIN ~

NOW, THEREFORE, KNOW ALL MEN BY THESE PRESENTS:

THAT, We, POGUEROSA INVESTMENTS II, LP, do hereby adopt this plat designating the hereinabove described property as POGUEROSA ADDITION, BLOCK A, LOTS 1 AND 2, an addition to the City of McKinney, Collin County, Texas, and do hereby dedicate to the public use forever, their streets, alleys and public use areas shown hereon, the easements, as shown, for mutual use and accommodation of the City of McKinney and all public utilities desiring to use or using same. All and any public utility and the City of McKinney shall have the right to remove and keep removed all or parts of any building, fences, shrubs, trees or other improvements or growths, which in anyway, endanger interfere with the construction, maintenance or efficiency of it's respective systems on said Easements, and the City of McKinney and all public utilities constructing, reconstructing, inspecting, patrolling, maintaining and adding to or removing all or parts of it's respective systems, without the necessity, at anytime, of procuring the permission of anyone. This plat approved subject to all platting ordinance, rules, regulations and resolutions of the City of McKinney, Texas.

WITNESS MY HAND at _____, Texas, this _____ day of _____, 2012.

By: Poguerosa Investments II, LP

Name

STATE OF TEXAS ~
COUNTY OF COLLIN ~

BEFORE ME, the undersigned authority in and for the State of Texas, on this day personally appeared _____ authorized representative of Encore Wire Limited, authorized to do business in the State of Texas.

GIVEN UNDER MY HAND AND SEAL OF OFFICE this _____ day of _____, 2012.

Notary Public in and for the State of Texas

SURVEYOR'S CERTIFICATE

KNOW ALL MEN BY THESE PRESENTS:

That I, Roman L. Groysman, do hereby certify that I prepared this plat from and actual survey of the land and that the corner monuments shown hereon were properly placed under my personal supervision in accordance with the Platting Rules and Regulations of the City of McKinney, Collin County, Texas.

PRELIMINARY

RELEASED 05/14/2012 FOR REVIEW PURPOSES ONLY. THIS DOCUMENT SHALL NOT BE RECORDED FOR ANY PURPOSE.

Roman L. Groysman,
Registered Professional Land Surveyor
No. 5864



STATE OF TEXAS ~

COUNTY OF COLLIN ~

BEFORE ME, the undersigned authority in and for the State of Texas, on this day personally appeared Roman L. Groysman, known to me to be the person whose name is subscribed to the foregoing instrument and acknowledged to me that he executed the same for the purposes and consideration therein expressed and in the capacity therein stated.

WITNESS MY HAND at _____, Texas, this _____ day of _____, 2012.

Notary Public in and for the State of Texas.

CONVEYANCE PLAT
POGUEROSA ADDITION
BLOCK A, LOTS 1 AND 2
LOCATED IN THE CITY OF MCKINNEY, TEXAS
AND BEING OUT OF THE
MEREDITH HART SURVEY, ABSTRACT No. 371
COLLIN COUNTY, TEXAS
SHEET 2 OF 2

Table with 2 columns: Field Name and Value. Fields include PREPARED FOR, SURVEYED, SCALE, PI NUMBER, DRAWN BY, CHECKED BY, and contact information for Poguerosa Investments II, LP and Pogue Engineering & Development Company, Inc.

POGUEROSA-CONVEYANCE PLAT.DWG, 1520-12-027, CONVEYANCE PLATTING, N:\085\1500-1599\1520-12-027, THE ENGINEERING DESIGN, DETAILED AND DIMENSIONED DRAWINGS FOR THIS PROJECT AND/OR GENERAL PROJECT ARE THE LEGAL PROPERTY OF POGUE ENGINEERING & DEVELOPMENT COMPANY, INC. THEIR USE FOR REPRODUCTION, CONSTRUCTION, OR DISTRIBUTION IS PROHIBITED UNLESS AUTHORIZED IN WRITING BY POGUE ENGINEERING & DEVELOPMENT COMPANY, INC. POGUE ENGINEERING & DEVELOPMENT COMPANY, INC. 2012. ALL RIGHTS RESERVED.