



Matthew King
Architect

Phone: 469-742-0678
matting@mkingarchitect.com

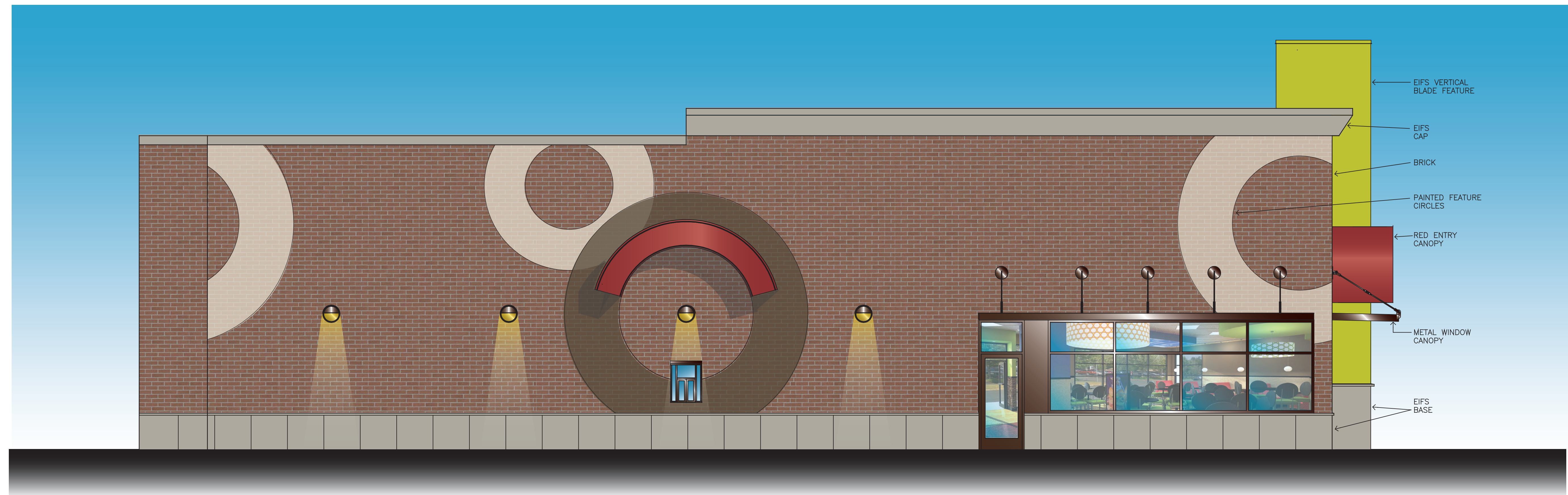
©Matthew King Architect

PRELIMINARY NOT FOR REGULATORY APPROVAL, PERMITTING OR CONSTRUCTION. FOR INTERIM REVIEW ONLY. MATTHEW P. KING ARCHITECT TX REGISTRATION NO. 17957

December 13, 2012



01 NORTH EXTERIOR ELEVATION
1/4" = 1'-0"



02 EAST EXTERIOR ELEVATION
1/4" = 1'-0"

Owner:

SCSD-Finnell, LTD

309 Highland Court
Double Oak, Tx 75077

Project:

Multi Tenant Building
1521 W. University Dr
Suites 100-110-120
McKinney, Texas 75070

Scale: as noted

Issue For:

Pricing Issue: May 30, 2014
Exterior Submittal: 6-18-14

RECEIVED
By Planning Department at 4:29 pm, Jul 28, 2014

A2
Exterior Elev's
Sheet Number



Architecture • Design • Planning

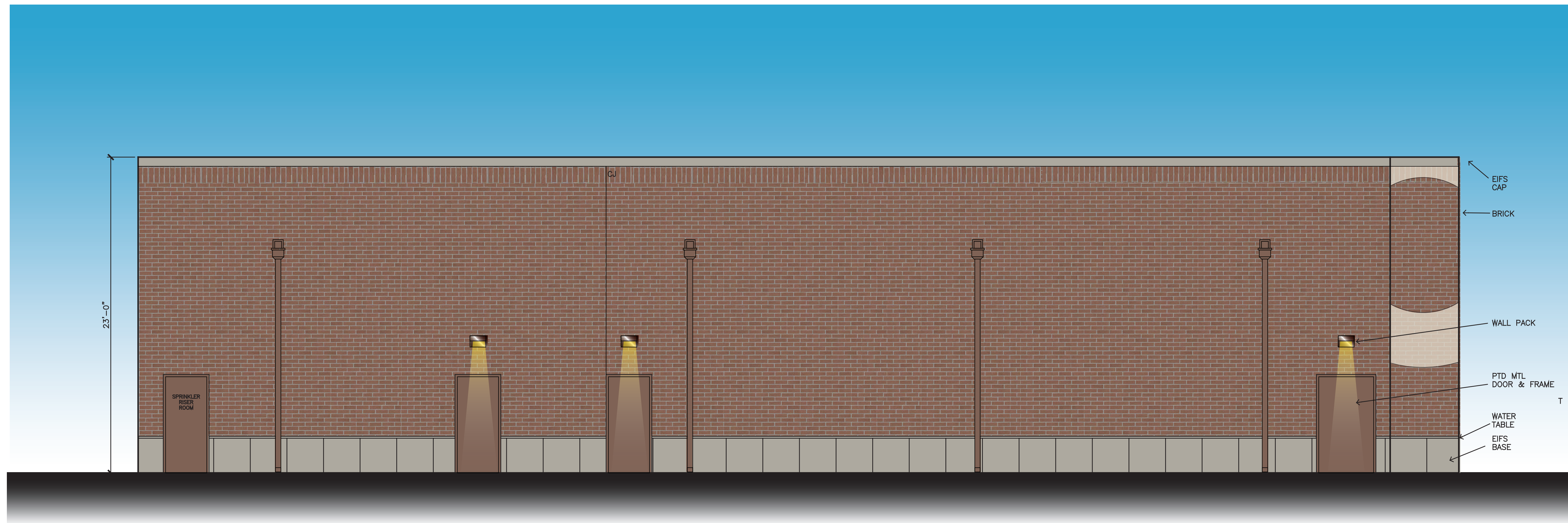
Matthew King
Architect

Phone: 469-742-0678
matting@mkingarchitect.com

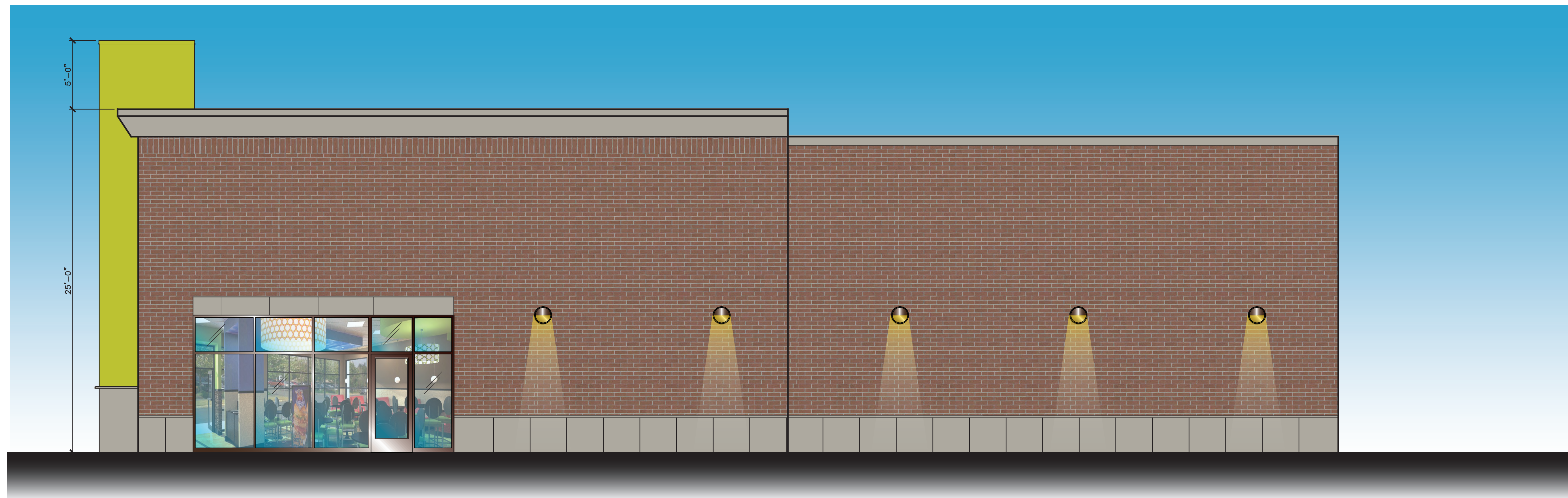
©Matthew King Architect

PRELIMINARY NOT FOR REGULATORY APPROVAL, PERMITTING OR CONSTRUCTION. FOR INTERIM REVIEW ONLY.
MATTHEW P. KING ARCHITECT
TX REGISTRATION NO. 17957

December 13, 2012



01 SOUTH EXTERIOR ELEVATION
1/4" = 1'-0"



02 WEST EXTERIOR ELEVATION
1/4" = 1'-0"

Owner:

SCSD-Finnell, LTD

309 Highland Court
Double Oak, Tx 75077

Project:

Multi Tenant Building
1521 W. University Dr
Suites 100-110-120
McKinney, Texas 75070

Scale: as noted

Issue For:

Pricing Issue: May 30, 2014
Exterior Submittal: 6-18-14

A2.1
Exterior Elev's

Sheet Number

RECEIVED

By Planning Department at 4:28 pm, Jul 28, 2014