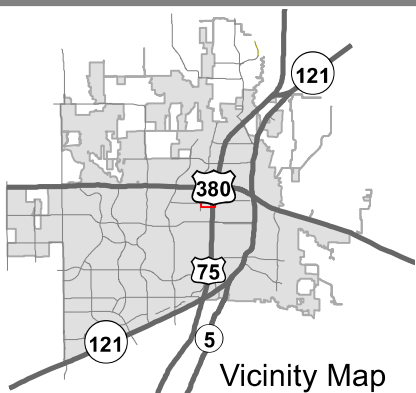
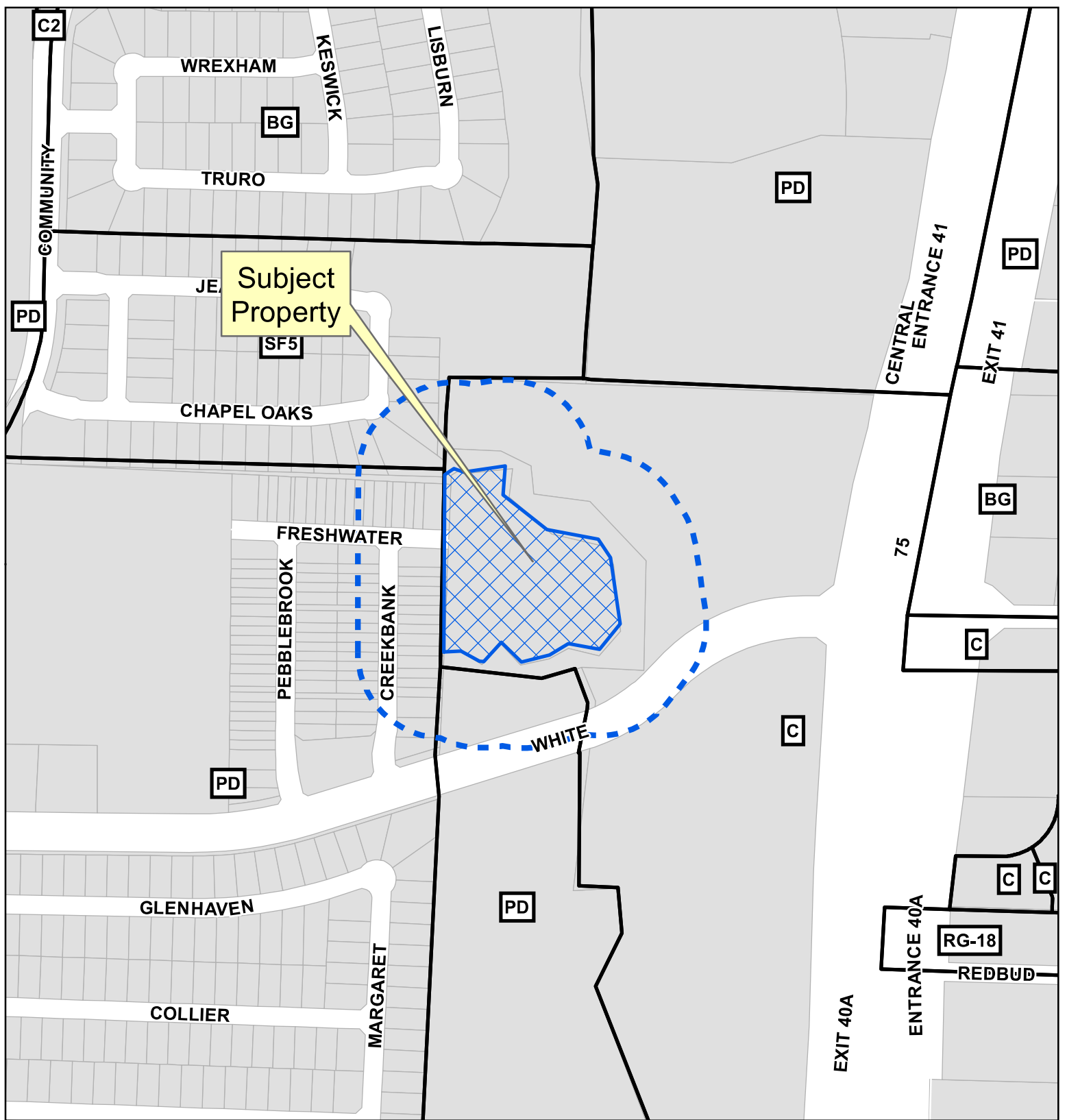


EXHIBIT A



Property Owner Notification Map

20-0048Z

 200' Buffer



0 170 340
 Feet
 1 in = 343 ft

DISCLAIMER: This map and information contained in it were developed exclusively for use by the City of McKinney. Any use or reliance on this map by anyone else is at that party's risk and without liability to the City of McKinney, its officials or employees for any discrepancies, errors, or variances which may exist.



EXHIBIT B

LEGAL DESCRIPTION

166,745 SQ. FT. / 3.8279 ACRES

BEING a 3.8279 acre tract of land situated in the SAMUEL McFALL SURVEY, ABSTRACT NO. 641, City of McKinney, Collin County, Texas and being all of that tract of land conveyed by deed to Don Mitchell, recorded in Volume 1176, Page 871, Deed Records, Collin County, Texas (D.R.C.C.T.) and being more particularly described as follows:

BEGINNING at a point for corner in the west line of said Mitchell tract of land, said point bearing N 00 deg. 13 min. 00 sec. E, a distance of 18.64 feet from the northwest corner of Lot 1, Block A of K & K Addition, an addition to the City of McKinney, according to the plat thereof recorded in Cabinet K, Page 802. Map Records, Collin County, Texas;

THENCE N 00 deg. 13 min. 00 sec. E, a distance of 461.84 feet to a 1/2" iron rod found for corner;

THENCE N 56 deg. 00 min. 00 sec. E, a distance of 29.57 feet to a point for corner;

THENCE S 70 deg. 00 min. 00 sec. E, a distance of 27.00 feet to a point for corner;

THENCE N 82 deg. 00 min. 00 sec. E, a distance of 110.00 feet to a point for corner;

THENCE S 05 deg. 00 min. 00 sec. W, a distance of 75.00 feet to a point for corner;

THENCE S 51 deg. 30 min. 00 sec. E, a distance of 146.50 feet to a point for corner;

THENCE S 79 deg. 45 min. 00 sec. E, a distance of 136.00 feet to a point for corner;

THENCE S 33 deg. 00 min. 00 sec. E, a distance of 58.00 feet to a point for corner;

THENCE S 08 deg. 23 min. 00 sec. E, a distance of 175.00 feet to a point for corner;

THENCE S 39 deg. 00 min. 00 sec. W, a distance of 85.00 feet to a point for corner;

THENCE N 79 deg. 30 min. 00 sec. W, a distance of 83.00 feet to a point for corner;

THENCE S 59 deg. 00 min. 00 sec. W, a distance of 57.00 feet to a point for corner;

THENCE S 76 deg. 00 min. 00 sec. W, a distance of 75.50 feet to a point for corner;

THENCE N 46 deg. 00 min. 00 sec. W, a distance of 74.00 feet to a point for corner;

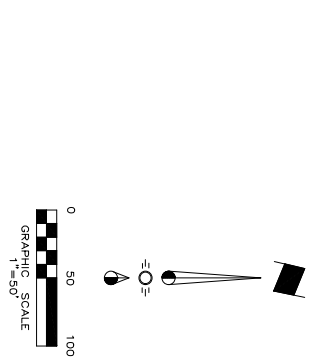
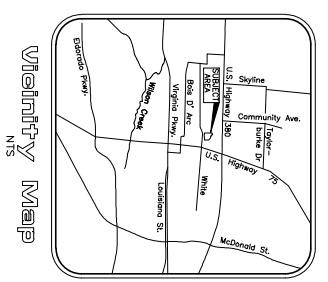
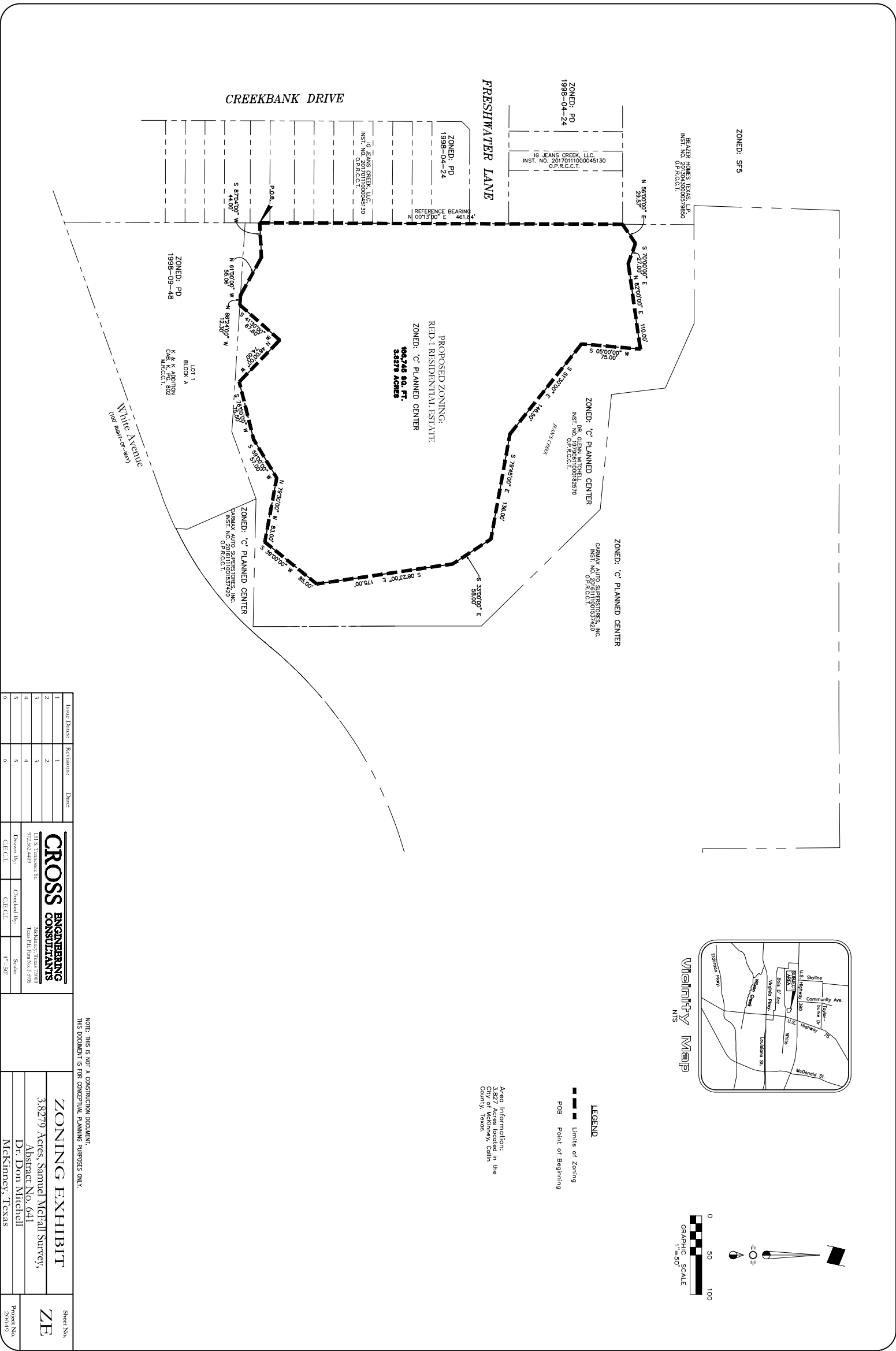
THENCE S 41 deg. 30 min. 00 sec. W, a distance of 67.60 feet to a point for corner and being in the north line of said Lot 1, Block A;

THENCE N 86 deg. 24 min. 00 sec. W, along the north line of said Lot 1, Block A, a distance of 12.30 feet to a point for corner;

THENCE N 61 deg. 00 min. 00 sec. W, a distance of 55.06 feet to a point for corner;

THENCE S 87 deg. 04 min. 00 sec. W, a distance of 44.00 feet to the POINT OF BEGINNING and containing 166,745 sq. ft. or 3.8279 acres of land.

EXHIBIT C



LEGEND

--- Limits of Zoning

— Point of Beginning

Area Information:
 164,746 sq. ft.
 3.8279 Acres
 City of McKinney, Collin County, Texas.

Issue Date	Revision	Date	CROSS ENGINEERING CONSULTANTS			ZONING EXHIBIT		Sheet No.
1	1		CROSS ENGINEERING CONSULTANTS 111 S. Tennessee St. McKinney, Texas 75069 972.562.4400 Team P/L from S.N. E. 9735			3.8279 Acres, Samuel McFall Survey, Abstract No. 641 Dr. Don Mitchell McKinney, Texas		ZP
2	2							
3	3							
4	4							
5	5							
6	6							

NOTE: THIS IS NOT A CONSTRUCTION DOCUMENT.
 THIS DOCUMENT IS FOR CONCEPTUAL PLANNING PURPOSES ONLY.