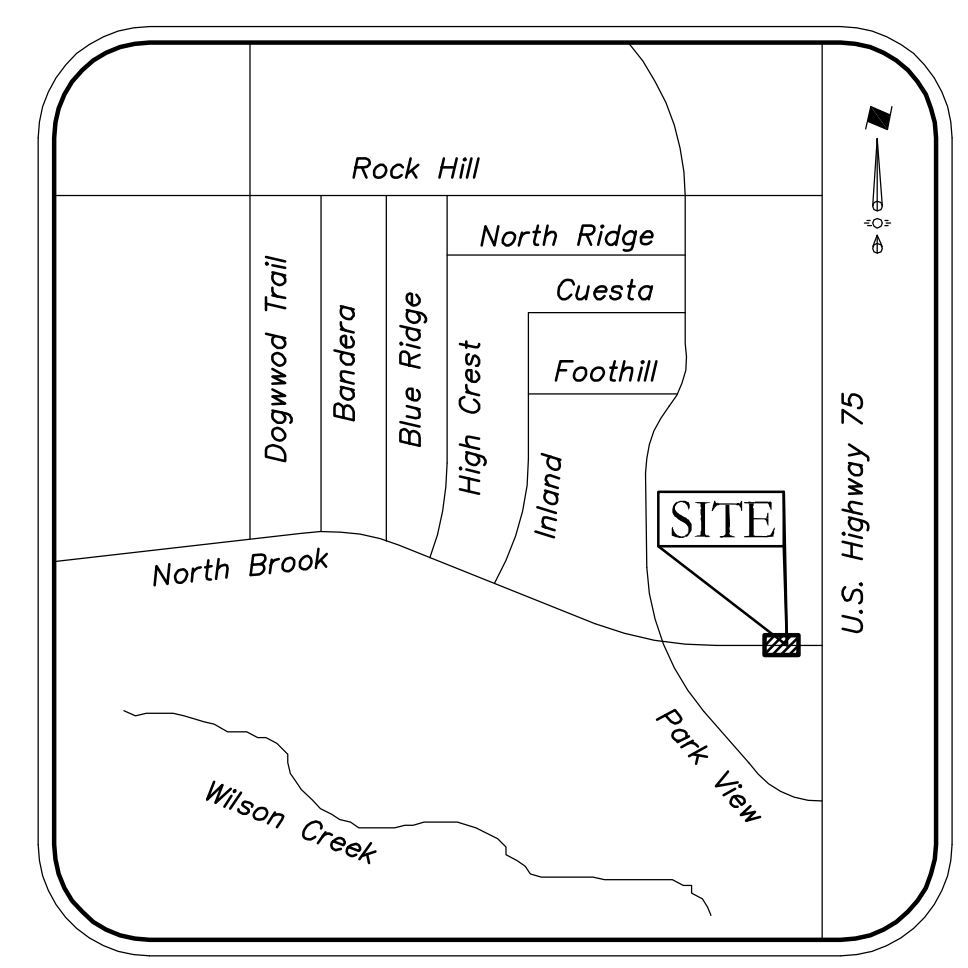
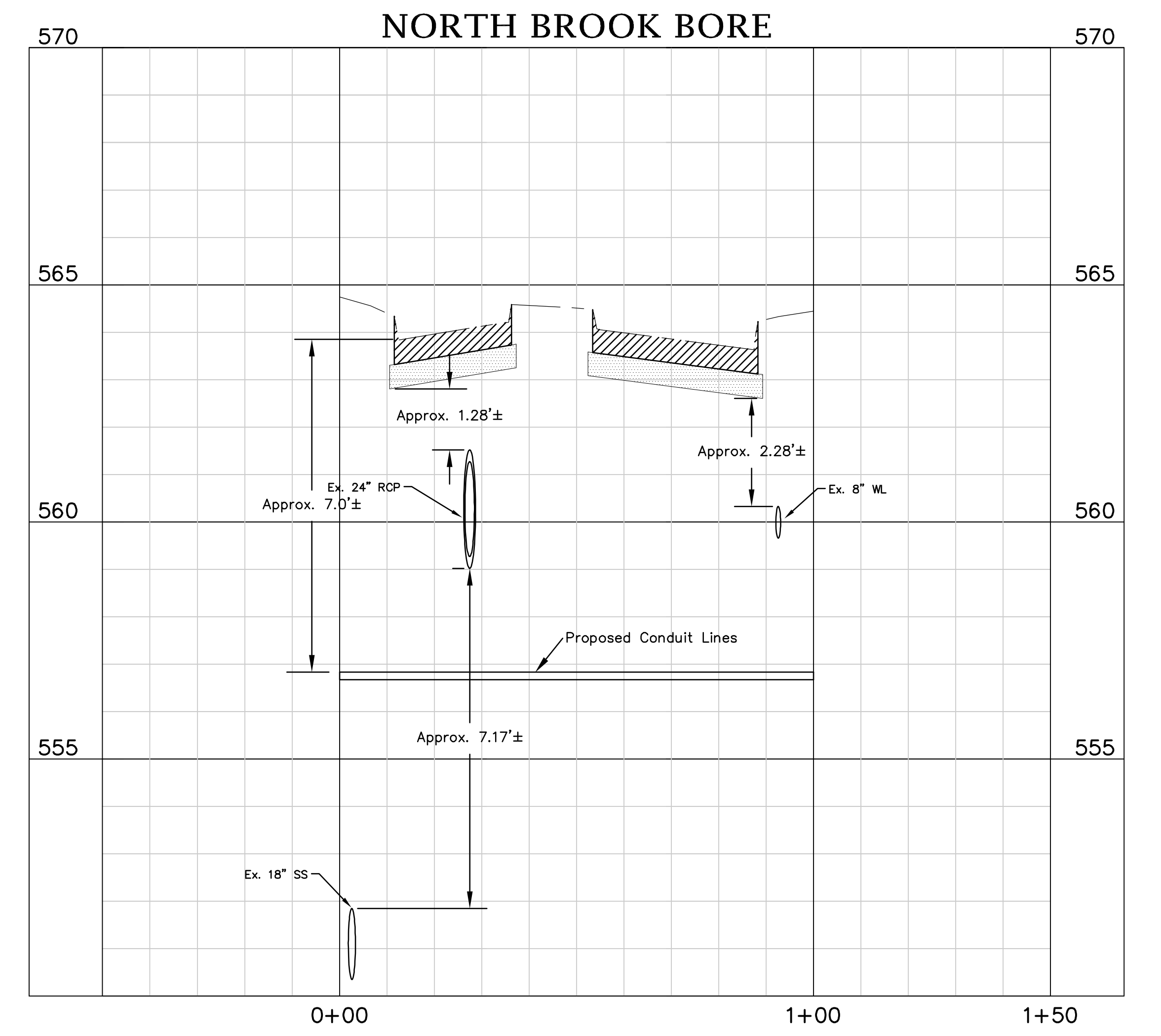
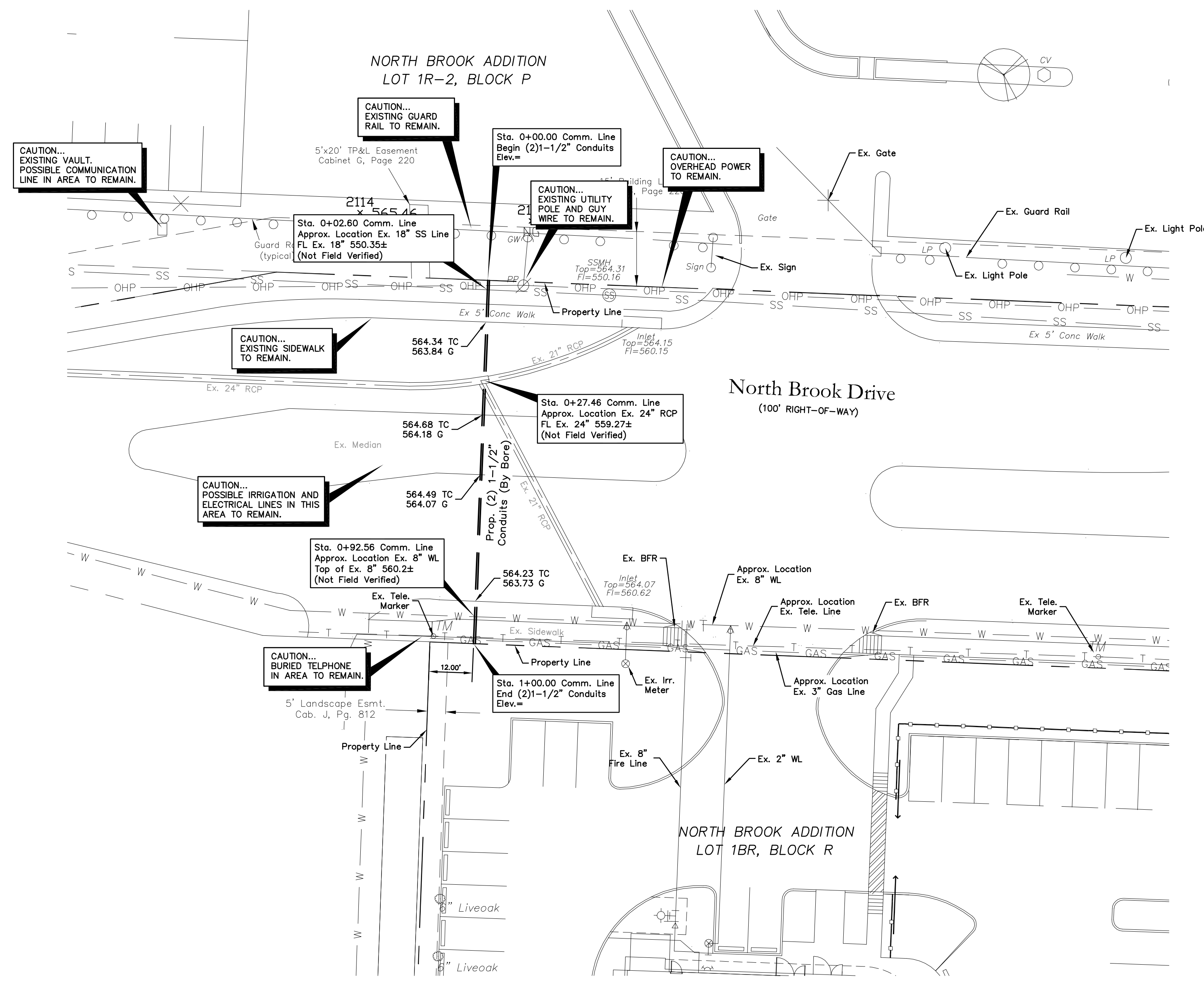
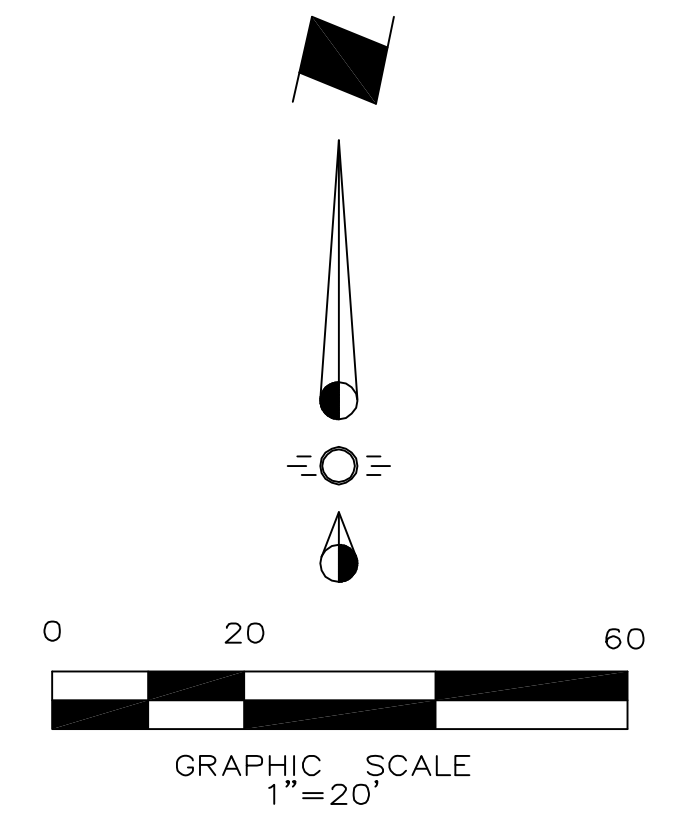


EXHIBIT C



Vicinity Map
NTS

NOTE:
CONTRACTOR SHALL CONTACT AND COORDINATE WITH ALL FRANCHISE UTILITY COMPANIES PRIOR TO AND DURING CONSTRUCTION.

NOTE:
ALL EXISTING UTILITIES IN AND ALONG NORTH BROOK DRIVE SHALL REMAIN.

NOTE:
EXISTING UTILITIES SHOWN PER AS-BUILT DOCUMENTS. CONTRACTOR TO FIELD VERIFY LOCATION AND DEPTH OF ALL UTILITIES PRIOR TO CONSTRUCTION AND NOTIFY ENGINEER OF ANY DISCREPANCIES. CONTRACTOR SHALL CONTACT DIGTESS AND CITY OF MCKINNEY FOR UTILITY LOCATES.

CAUTION!
Existing Utilities in Area. Contractor to determine location and elevation of all utilities prior to construction. Contractor to inform Engineer of any conflicts prior to construction.



Issue Dates:	Revisions:	Date:
1	1	
2	2	
3	3	
4	4	
5	5	
6	6	

CROSS ENGINEERING CONSULTANTS
131 S. Tennessee St. McKinney, Texas 75069
972.562.4409 Texas P.E. Firm No. F-5935

Drawn By:	Checked By:	Scale:
C.E.C.I.	C.E.C.I.	1"=20'

North Brook Drive Crossing Exhibit
COMMUNICATION LINE
BOB TOMES FORD
CITY OF MCKINNEY, TEXAS

Sheet No.
EX
Project No.
14027

BOB TOMES FORD COMMUNICATION LINE