

CONSTRUCTION NOTES:

CONCRETE FORMWORK AND REINFORCEMENT
 THE CONTRACTOR SHALL NOTIFY THE OWNER'S REPRESENTATIVE A MINIMUM OF 48 HOURS PRIOR TO THE PLANNED PLACEMENT OF CONCRETE. THE OWNER'S REPRESENTATIVE MUST HAVE OBSERVED AND APPROVED THE FORMWORK AND REINFORCEMENT PRIOR TO ANY PLACEMENT OF CONCRETE.

CONCRETE FINISH AND SAW JOINTS
 THE CONTRACTOR SHALL PROVIDE AND MAINTAIN ON THE SITE SAMPLE PANELS OF PAVEMENT 4' X 4' IN SIZE FOR EACH FINISH OF CONCRETE PAVEMENT. THE SURFACE FINISHES SHALL BE AS APPROVED BY THE OWNER'S REPRESENTATIVE. ANY CONCRETE PLACED WITH AN IMPROPER FINISH SHALL BE REMOVED AND REPLACED AT THE CONTRACTOR'S EXPENSE. ALL SAW JOINTS SHALL BE SAWN WITHIN 24 HOURS OF CONCRETE PLACEMENT. ANY CONCRETE SAWN LATER THAN THIS WHICH, IN THE OPINION OF THE OWNER'S REPRESENTATIVE, HAS EXCESSIVE SHRINKAGE CRACKS DUE TO NOT HAVING BEEN SAWN SOON ENOUGH, SHALL BE REMOVED AND REPLACED AT THE CONTRACTOR'S EXPENSE.

ALIGNMENT AND TANGENCY OF PAVEMENTS
 THE EDGES OF ALL FINISHED PAVING SHALL BE STRAIGHT OR SMOOTH CURVES (AS DELINEATED ON THE PLANS) WITH NO INTERRUPTIONS SUCH AS CHORDS, WAVES, JOGS, OR MISSED TANGENTS. PAVEMENTS WITH SUCH INTERRUPTIONS SHALL BE REMOVED

CITY STANDARDS
 ALL WORK AND MATERIALS SHALL BE IN ACCORDANCE WITH THE CITY OF MCKINNEY, TEXAS' CITY STANDARD SPECIFICATIONS, AND THE STANDARD SPECIFICATIONS FOR PUBLIC WORKS CONSTRUCTION, NORTH CENTRAL TEXAS, AS PREPARED BY N.T.C.O.G.

FIRE LANE AND FIRE HYDRANT
 FIRE LANES SHALL BE PROPERLY MARKED WITH A 6 INCH RED STRIPE WITH 4 INCH WHITE LETTERS UPON THE VERTICAL SURFACE OF THE CURB ALONG THE ENTIRE LENGTH OF THE FIRE LANE.

DIMENSIONS
 DIMENSIONS ARE TO BACKS OF CURBS, TO CENTERLINES OF FENCES, OR TO EDGES OF PAVEMENTS, UNLESS OTHERWISE INDICATED. WRITTEN AND NUMBERED DIMENSIONS HOLD PRECEDENCE OVER SCALED DIMENSIONS.

ADJUSTMENTS
 IF THE CONTRACTOR BELIEVES IT IS NECESSARY TO MAKE AN ADJUSTMENT IN THE LAYOUT OR GRADE OF PROPOSED IMPROVEMENTS, SUCH AN ADJUSTMENT SHALL BE PROPOSED TO THE OWNER'S REPRESENTATIVE. NO ADJUSTMENT WILL BE PERMITTED UNTIL IT HAS FIRST BEEN APPROVED BY THE OWNER'S REPRESENTATIVE.

TURFGRASS PLANTING
 TURFGRASS SHALL BE PLANTED AND ESTABLISHED, AS SPECIFIED, OVER ANY AREAS DISTURBED BY CONSTRUCTION. THE GRASS LIMITS LINES SHOWN ARE NOT ABSOLUTE. TURFGRASS PLANTING SHALL TAKE PLACE BEYOND THE LIMITS IF THE AREA IS DISTURBED.

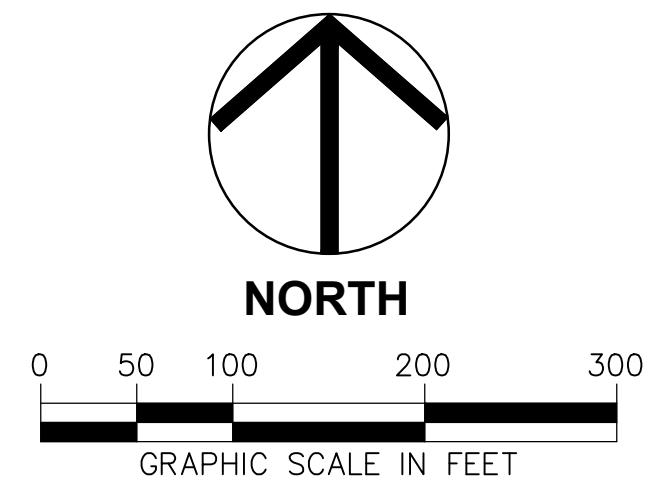
CONCRETE TRAIL/SIDEWALK LAYOUT
 CENTERLINE OF THE TRAIL SHALL BE STAKED IN THE FIELD BY THE CONTRACTOR FOLLOWING THE ALIGNMENT SHOWN IN THE CONSTRUCTION DOCUMENTS. APPROVAL OF THE CENTERLINE STAKING BY THE OWNER/LANDSCAPE ARCHITECT IS REQUIRED PRIOR TO BEGINNING FORMWORK.

LEGEND:

- SAWN CONTROL JOINT PER DETS. 2/L6.00 & 5/L6.00
- DEJ DOWELED EXP. JOINT PER DETS. 2/L6.00 & 4/L6.00
- 9" CONC. PAVING ON 8" FLEX. BASE REF. CIVIL SHEETS
- 7" CONCRETE PAVING ON 6" TREATED SUBGRADE PER DET. 1/L6.00
- 6" CONCRETE PAVING ON 6" TREATED SUBGRADE PER DET. 1/L6.00
- 5" CONCRETE PAVING ON 6" TREATED SUBGRADE PER DET. 1/L6.00
- 5" CONCRETE PAVING ON COMPACTED SUBGRADE PER DET. 5/L6.00
- 5" CONCRETE PAVING W/ROCK SALT FINISH ON COMPACTED SUBGRADE PER DET. 5/L6.00
- STRUCTURAL CONCRETE REF. STRUCTURAL SHEETS
- 5" PERVIOUS CONC. PAVING PER DET. 5/L6.06

CONTROL POINT #1 City Monument CM04	CONTROL POINT #2 City Monument CM05	CONTROL POINT #3 1/2" IRON PIN
N - 7115109.198 E - 2512528.403 ELEV. - 749.254	N - 7114864.130 E - 2517437.153 ELEV. - 724.572	N - 7112078.907 E - 2514911.394 ELEV. - 731.97

EXISTING UTILITIES
 CONTRACTOR MUST VERIFY LOCATION OF ALL OVERHEAD AND UNDERGROUND UTILITIES PRIOR TO CONSTRUCTION. CONTRACTOR SHALL COORDINATE WITH CITY OFFICIALS AND UTILITY COMPANIES IN LOCATING UTILITIES. CONTRACTOR SHALL BE HELD RESPONSIBLE FOR LOSSES DUE TO DAMAGE TO UTILITIES. LOCATION FOR ALL UTILITIES SHOWN ON PLANS ARE APPROXIMATE. CONTRACTOR SHALL CALL DIG TESS, 1-800-DIG-TESS.



**CITY OF MCKINNEY
 ENGINEERING DEPARTMENT
 RELEASED FOR CONSTRUCTION**

DATE 10/19/2017 BY [Signature]

PRIOR TO CONSTRUCTION THE OWNER OR THEIR REPRESENTATIVE SHALL NOTIFY THE CITY OF MCKINNEY ENGINEERING DEPARTMENT AT 972-547-7429. CONSTRUCTION DRAWINGS STAMPED BY THE CITY OF MCKINNEY SHALL BE ON THE PROJECT SITE AT ALL TIMES DURING CONSTRUCTION. THE CITY OF MCKINNEY STANDARD SPECIFICATIONS FOR CONSTRUCTION SHALL TAKE PRECEDENCE OVER THESE PLANS WHENEVER IN CONFLICT THEREWITH.

DISCLAIMER: ALL NECESSARY APPROVALS AND PERMITS SHALL BE ACQUIRED PRIOR TO CONSTRUCTION.



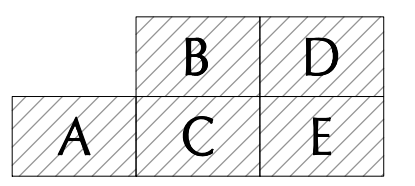
SRA
 Schrickel, Rollins and Associates, Inc.
 Landscape Architecture - Civil Engineering - Planning
 1161 Corporate Drive West Suite 200
 Arlington, Texas 76006
 Phone: 817-649-3216
 Metro: 817-640-8212
 Fax: 817-649-7645

- Architect
BROCHARD ARCHITECTURE
 3028 Selma Lane
 Farmers Branch, Texas 75234
 (817) 705-6275
- Electrical Engineer
YAGGI ENGINEERING, INC.
 5840 W. I-20, Suite 270
 Arlington, Texas 76017
 (817) 483-2373 FAX (817) 483-4233
- Mechanical & Plumbing Engineer
BAIRD, HAMPTON & BROWN, INC.
 6300 Ridgela Place, Suite 700
 Fort Worth, Texas 76116
 (817) 338-1277 FAX (817) 338-9245
- Structural Engineer
DON ILLINGWORTH AND ASSOCIATES, INC.
 2401 Ave. J, Suite 206
 Arlington, Texas 76010
 (817) 649-1544 FAX (817) 649-1545
- Irrigation Designer
JAMES POLE IRRIGATION CONSULTANTS
 100 West Oak Street, Suite 106
 Denton, Texas 76201
 (940) 243-2364 FAX (940) 382-2475

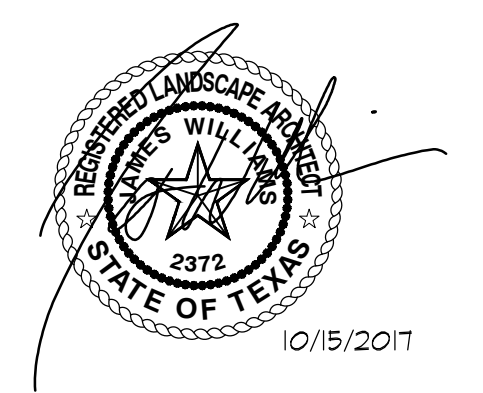


**GABE NESBITT
 TENNIS CENTER
 EXPANSION**

CITY OF MCKINNEY
 PARKS & RECREATION DEPARTMENT
 MCKINNEY, TEXAS



KEY MAP



DATE:	October 15, 2017
REVISED:	
STATUS:	Bid Issue Const. Documents
DESIGN BY:	JW
DRAWN BY:	XT
JOB NO.	5319

**CONSTRUCTION
 LAYOUT
 OVERALL**

SCALE:	1"=100'-0"
SHEET NO.	L2.00



Schrickel, Rollins and Associates, Inc.
 Landscape Architecture - Civil Engineering - Planning
 1161 Corporate Drive West Suite 200
 Arlington, Texas 76016
 Phone: 817.649.3216
 Metro: 817.640.8212
 Fax: 817.649.2645

Architect
 BROHARD ARCHITECTURE
 3028 Selma Lane
 Farmers Branch, Texas 75234
 (817) 705.6275

Electrical Engineer
 YACGI ENGINEERING, INC.
 5840 W. 120, Suite 270
 Arlington, Texas 76017
 (817) 483.3373 FAX (817) 483.4233

Mechanical & Plumbing Engineer
 BAIRD, HAMPTON & BROWN, INC.
 6300 Ridgela Place, Suite 700
 Fort Worth, Texas 76116
 (817) 338.1277 FAX (817) 338.9245

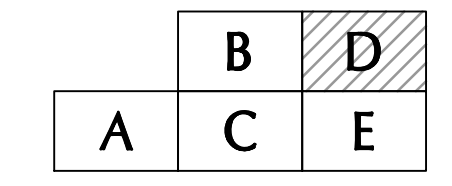
Structural Engineer
 DON ILLINGWORTH AND ASSOCIATES, INC.
 2401 Ave. J, Suite 206
 Arlington, Texas 76016
 (817) 649-1544 FAX (817) 649-1545

Irrigation Designer
 JAMES POLE IRRIGATION CONSULTANTS
 100 West Oak Street, Suite 106
 Denton, Texas 76201
 (940) 243.2364 FAX (940) 382.2475



GABE NESBITT TENNIS CENTER EXPANSION

CITY OF MCKINNEY
 PARKS & RECREATION DEPARTMENT
 MCKINNEY, TEXAS



KEY MAP

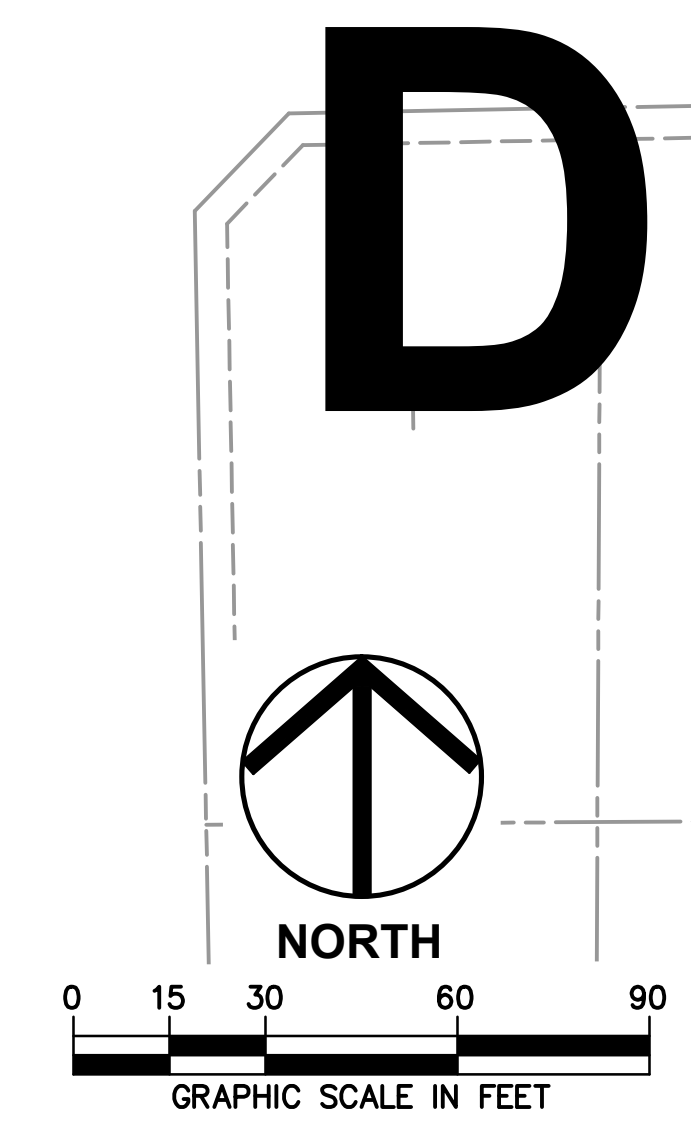
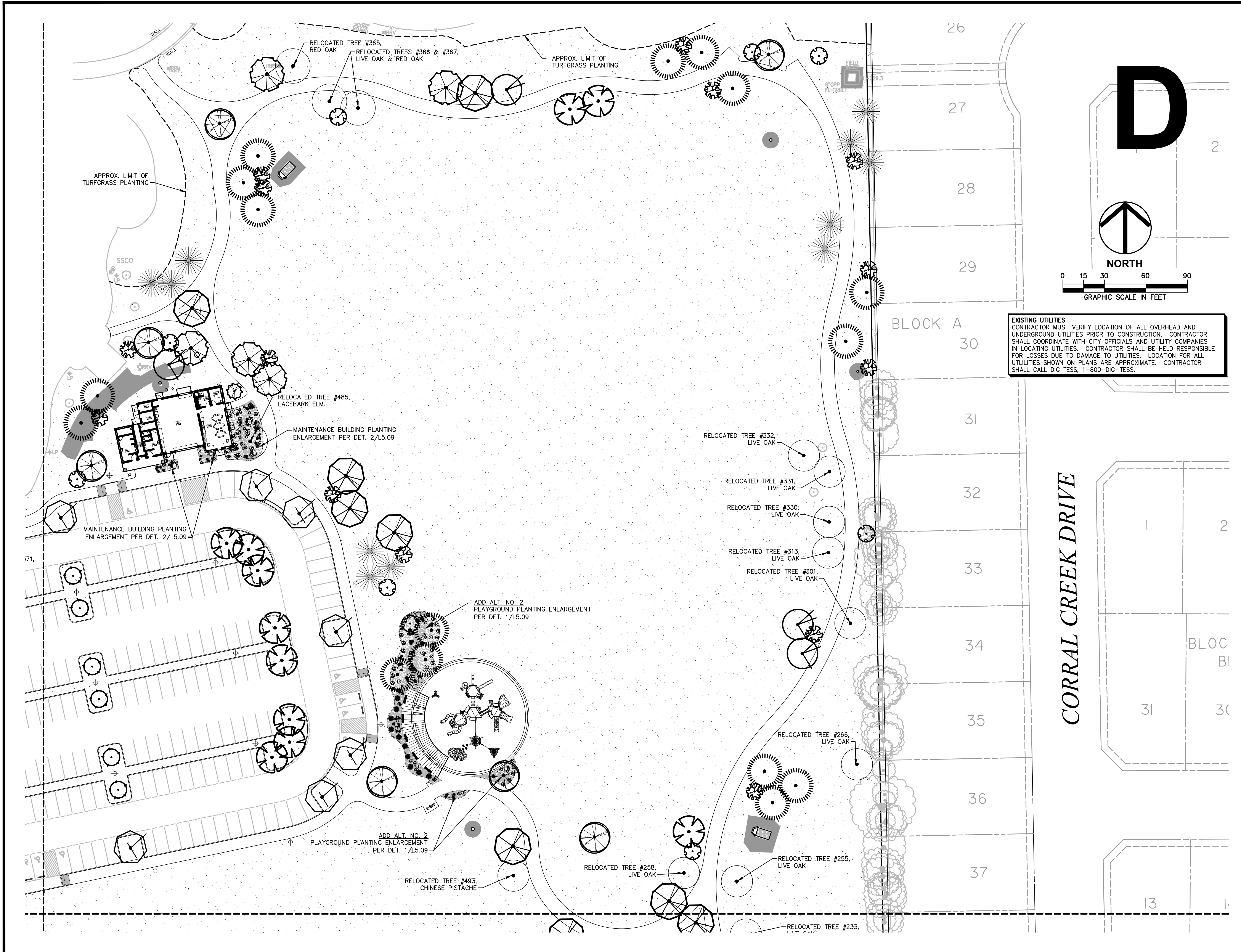


10/15/2017

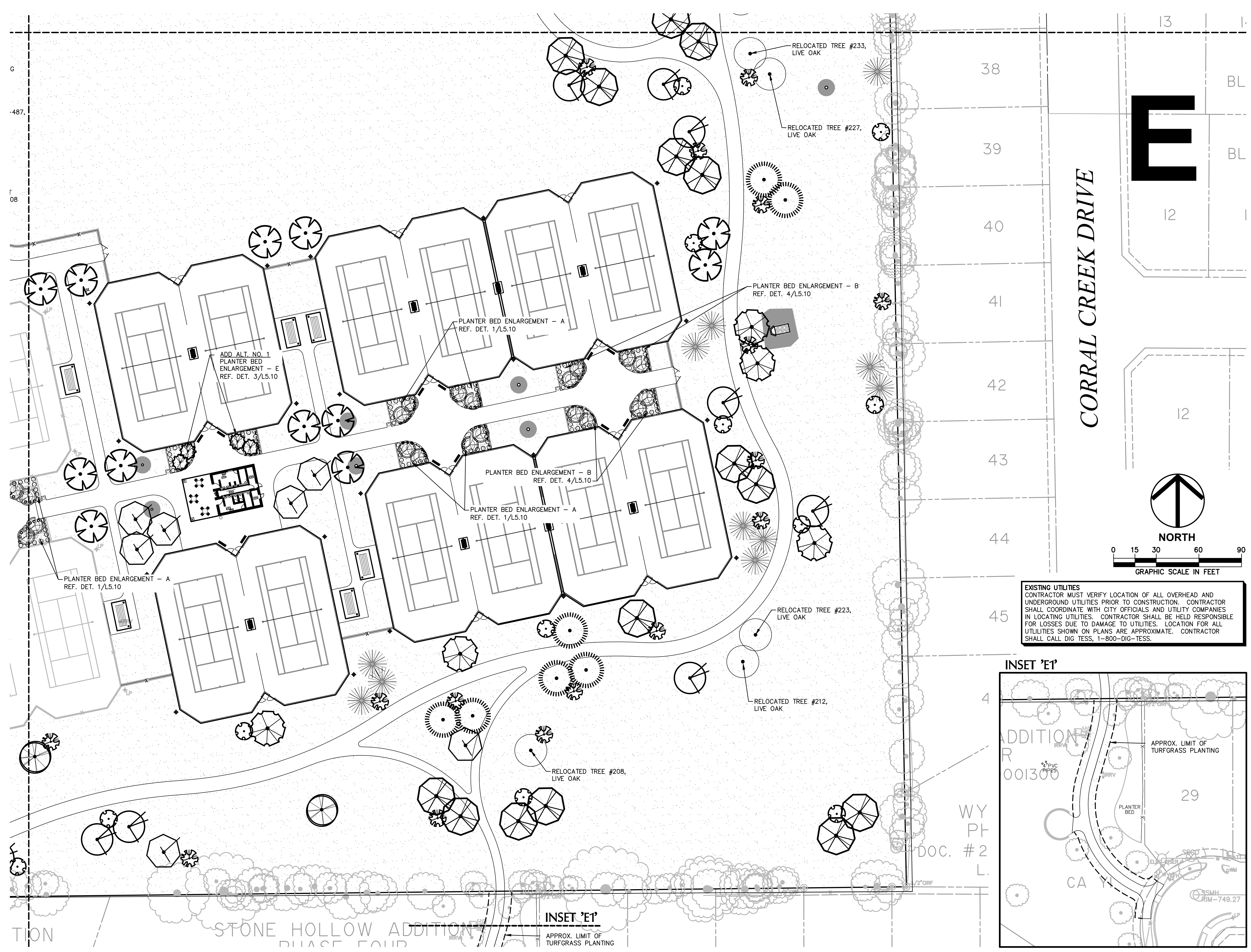
DATE: October 15, 2017
 REVISED:
 STATUS: Bid Issue Const. Documents
 DESIGN BY: JW
 DRAWN BY: XT
 JOB NO. 5319

**LANDSCAPE
 PLAN
 AREA 'D'**

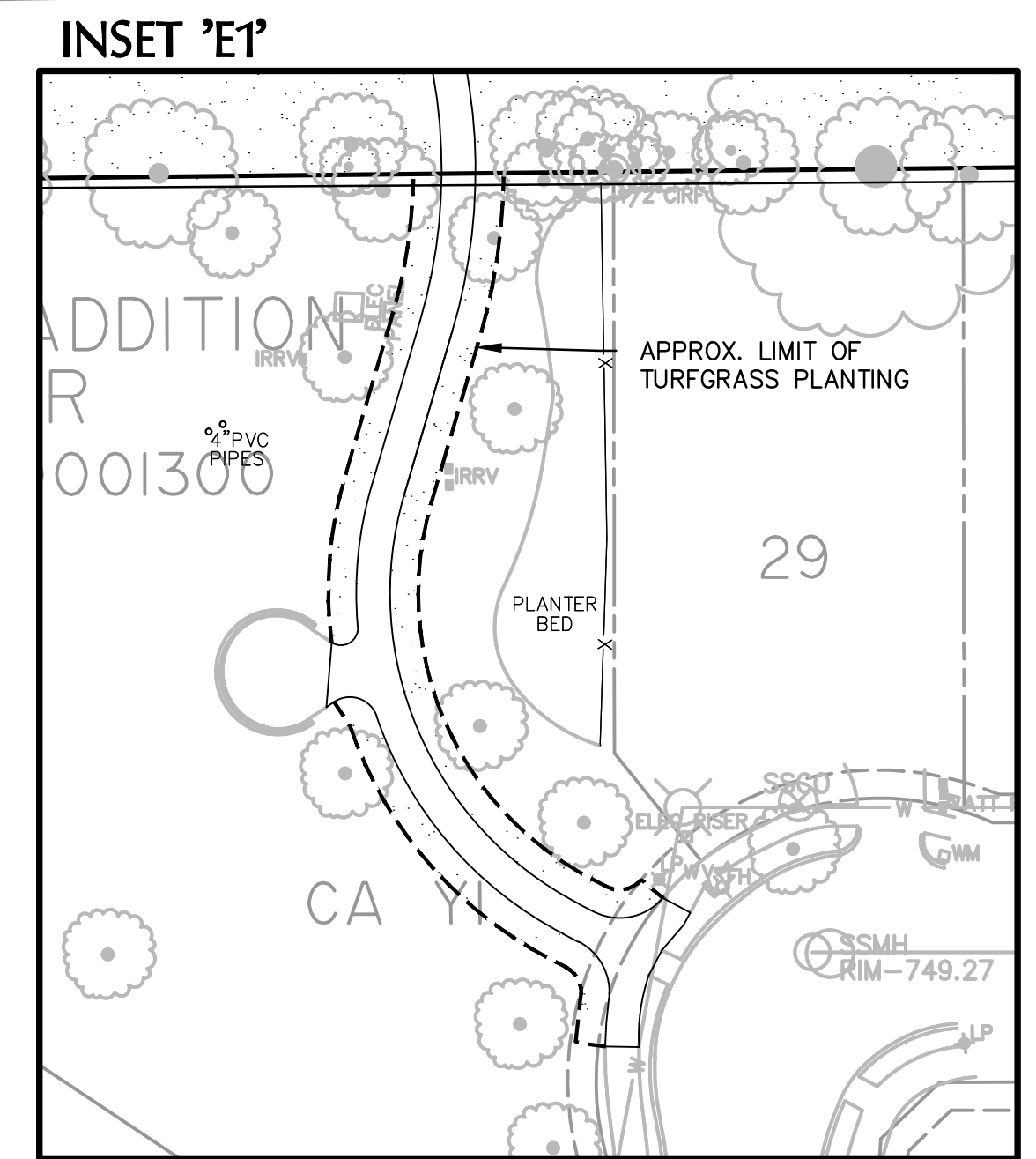
SCALE: 1"=30'-0"
 SHEET NO. **L5.04**



EXISTING UTILITIES
 CONTRACTOR MUST VERIFY LOCATION OF ALL OVERHEAD AND UNDERGROUND UTILITIES PRIOR TO CONSTRUCTION. CONTRACTOR SHALL COORDINATE WITH CITY OFFICIALS AND UTILITY COMPANIES IN LOCATING UTILITIES. CONTRACTOR SHALL BE HELD RESPONSIBLE FOR LOSSES DUE TO DAMAGE TO UTILITIES. LOCATION FOR ALL UTILITIES SHOWN ON PLANS ARE APPROXIMATE. CONTRACTOR SHALL CALL DIG TESS, 1-800-DIG-TESS.



EXISTING UTILITIES
 CONTRACTOR MUST VERIFY LOCATION OF ALL OVERHEAD AND UNDERGROUND UTILITIES PRIOR TO CONSTRUCTION. CONTRACTOR SHALL COORDINATE WITH CITY OFFICIALS AND UTILITY COMPANIES IN LOCATING UTILITIES. CONTRACTOR SHALL BE HELD RESPONSIBLE FOR LOSSES DUE TO DAMAGE TO UTILITIES. LOCATION FOR ALL UTILITIES SHOWN ON PLANS ARE APPROXIMATE. CONTRACTOR SHALL CALL DIG TESS, 1-800-DIG-TESS.



SRA
 Schrickel, Rollins and Associates, Inc.
 Landscape Architecture - Civil Engineering - Planning
 1161 Corporate Drive West Suite 200
 Arlington, Texas 76016
 Phone: 817.649.3216
 Metro: 817.640.8212
 Fax: 817.649.7645

Architect
 BROHARD ARCHITECTURE
 3028 Selma Lane
 Farmers Branch, Texas 75234
 (817) 705.6275

Electrical Engineer
 YACGI ENGINEERING, INC.
 5840 W. 120, Suite 270
 Arlington, Texas 76017
 (817) 483.2373 FAX (817) 483.4233

Mechanical & Plumbing Engineer
 BAIRD, HAMPTON & BROWN, INC.
 6300 Ridgela Place, Suite 700
 Fort Worth, Texas 76116
 (817) 338.1277 FAX (817) 338.9245

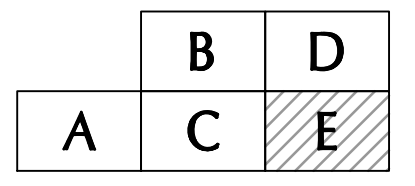
Structural Engineer
 DON ILLINGWORTH AND ASSOCIATES, INC.
 2401 Ave. J, Suite 206
 Arlington, Texas 76016
 (817) 649-1544 FAX (817) 649-1545

Irrigation Designer
 JAMES POLE IRRIGATION CONSULTANTS
 100 West Oak Street, Suite 106
 Denton, Texas 76201
 (940) 243.2364 FAX (940) 382.2475



**GABE NESBITT
 TENNIS CENTER
 EXPANSION**

CITY OF MCKINNEY
 PARKS & RECREATION DEPARTMENT
 MCKINNEY, TEXAS



KEY MAP



DATE: October 15, 2017
 REVISED:
 STATUS: Bid Issue Const. Documents
 DESIGN BY: JW
 DRAWN BY: XT
 JOB NO. 5319

**LANDSCAPE
 PLAN
 AREA 'E'**

SCALE: 1"=30'-0"
 SHEET NO. **L5.05**