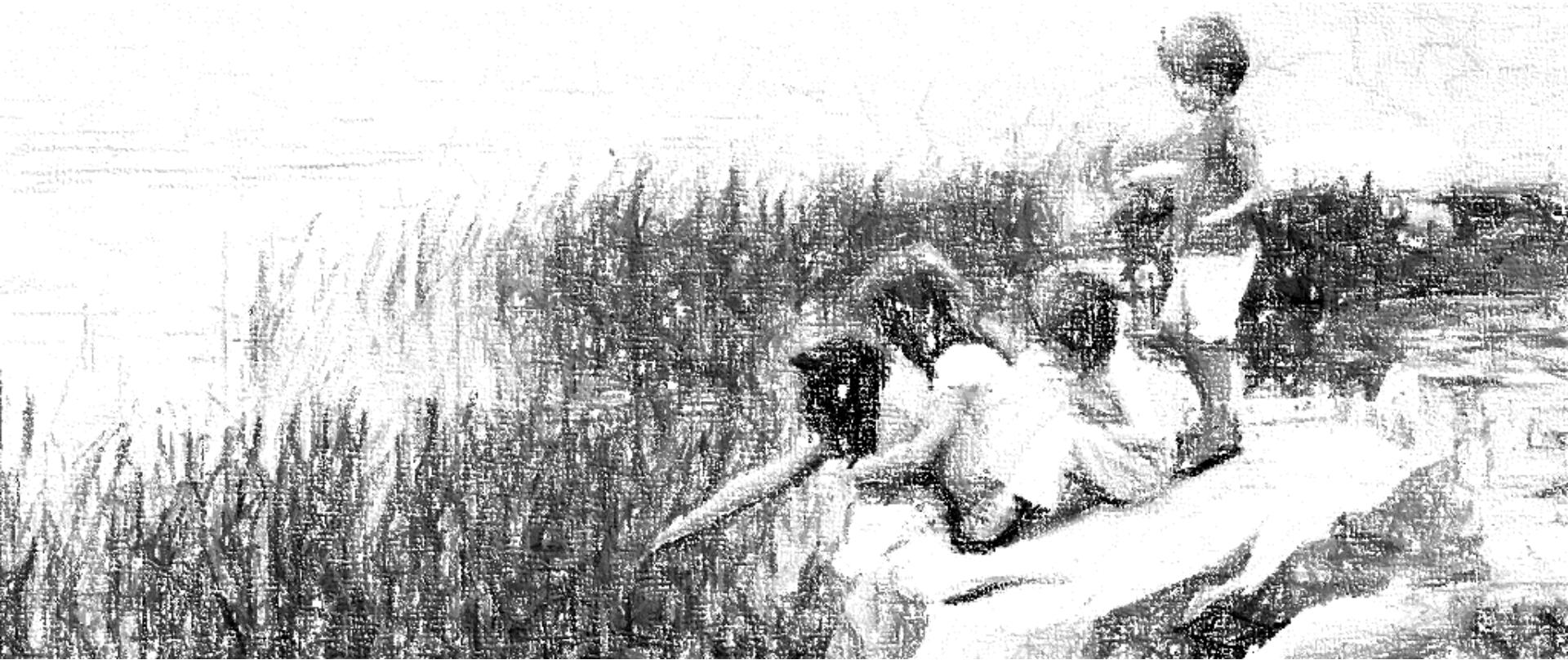


GABE NESBITT PARK MASTER PLAN UPDATE

FINAL MASTER PLAN

PUBLIC FORUM

09.10.2015



PURPOSE

PROJECT HISTORY

PRELIMINARY DESIGNS

FINAL MASTER PLAN

INPUT AND QUESTIONS

NEXT STEPS

PURPOSE

Gabe Nesbitt Park Master Plan Development

Provide a process for allowing public input to determine best use of valuable parkland, maximize the benefit of the development, and create an overall park design that is cohesive and respectful of others.



PURPOSE

PROJECT HISTORY

PRELIMINARY DESIGNS

FINAL MASTER PLAN

INPUT AND QUESTIONS

NEXT STEPS

UPCOMING DATES

- **October 5th** – Council work session
- **October 8th** – Master Plan presentation to the Parks, Recreation Advisory Board for recommendation of approval to Council
- **October 20th** – Council approval Master Plan recommendation of approval to the City Council

PURPOSE

PROJECT HISTORY

PREVIOUS STEPS

FINAL MASTER PLAN

INPUT AND QUESTIONS

NEXT STEPS

PREVIOUS STEPS

SITE ANALYSIS

PRELIMINARY CONCEPTS

PUBLIC INPUT



AQUATICS CENTER

PSA ARENA MCKINNEY

JOHN AND JUDY GAY LIBRARY

SOFTBALL FIELDS

BASEBALL FIELDS

SKATE PARK

TENNIS COMPLEX

THE VILLAS AT EL DORADO

WYNNGATE COMMUNITY

± 8.5 AC

± 14.0 AC

± 10.0 AC

ALPHA ROAD

EL DORADO PARKWAY

COVAL CREEK DRIVE

MUSKOGEE CROSSING

HIGH POINT (748)

LOW POINT (728)

MCKINNEY GREEN GARDEN

WATER TOWER

PLAYGROUND

DETENTION

DETENTION

DETENTION

DETENTION

DETENTION

DETENTION

1

2

3

5

9

4

10

8

6

7

8

OPTION 1- ACTIVITY

OPTION 2- UNIQUE BY NATURE

OPTION 3- QUALITY OF LIFE



PRELIMINARY MASTER PLAN 1: ACTIVITY



PRELIMINARY MASTER PLAN 2: UNIQUE BY NATURE



PRELIMINARY MASTER PLAN 3: QUALITY OF LIFE

SUMMARY

OPEN SPACE, SOCCER, JOGGING, AND POND

MORE PLAYGROUNDS AND RESTROOMS

FLEXIBLE EVENT SPACE FOR SPORTS PRACTICE

MORE TENNIS COURTS

BUFFER RESIDENCES FROM COURTS AND ROADS

WAYFINDING



PURPOSE

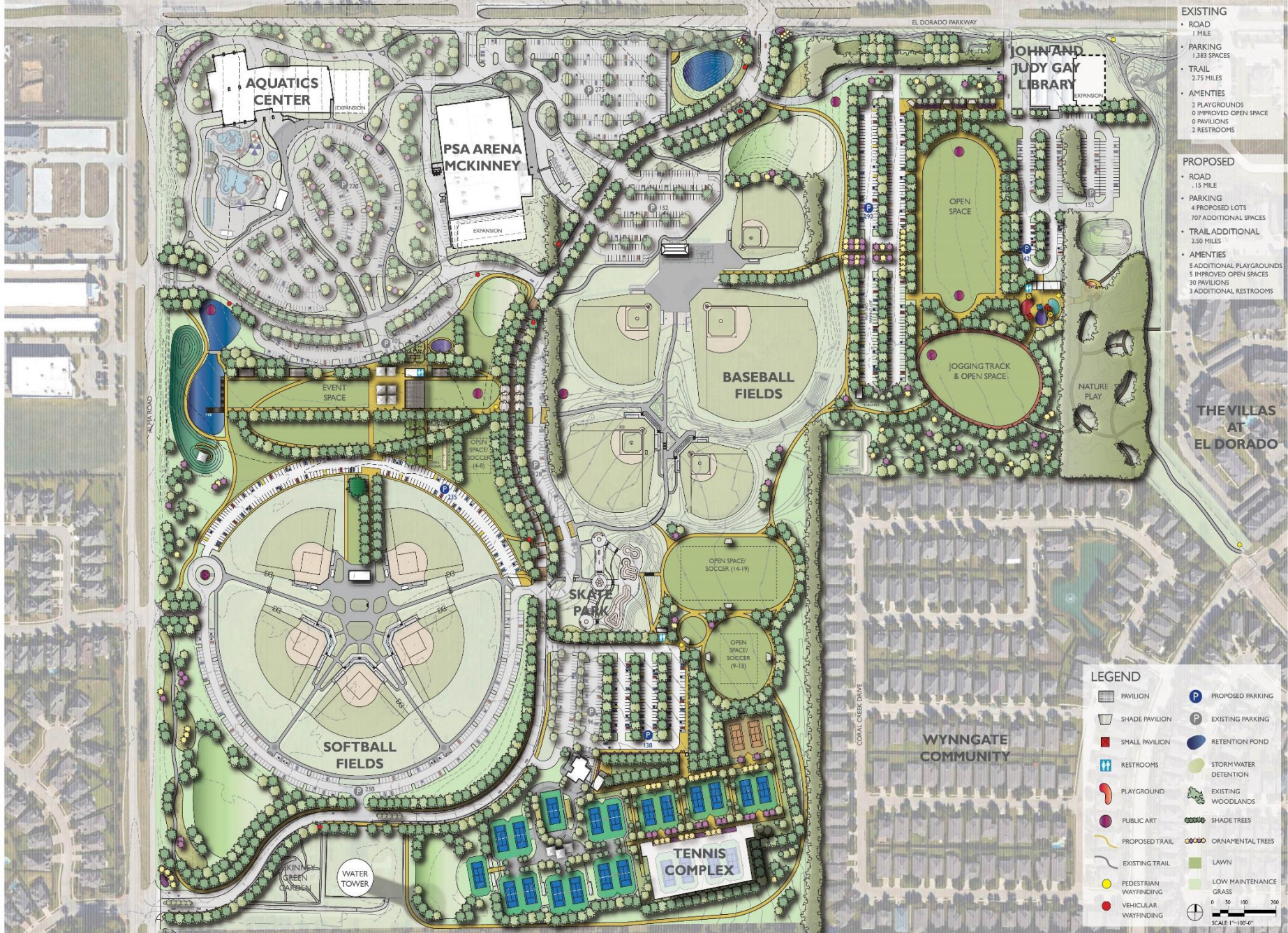
PROJECT HISTORY

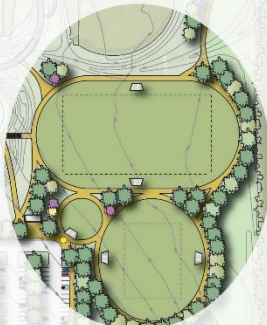
PRELIMINARY DESIGNS

FINAL MASTER PLAN

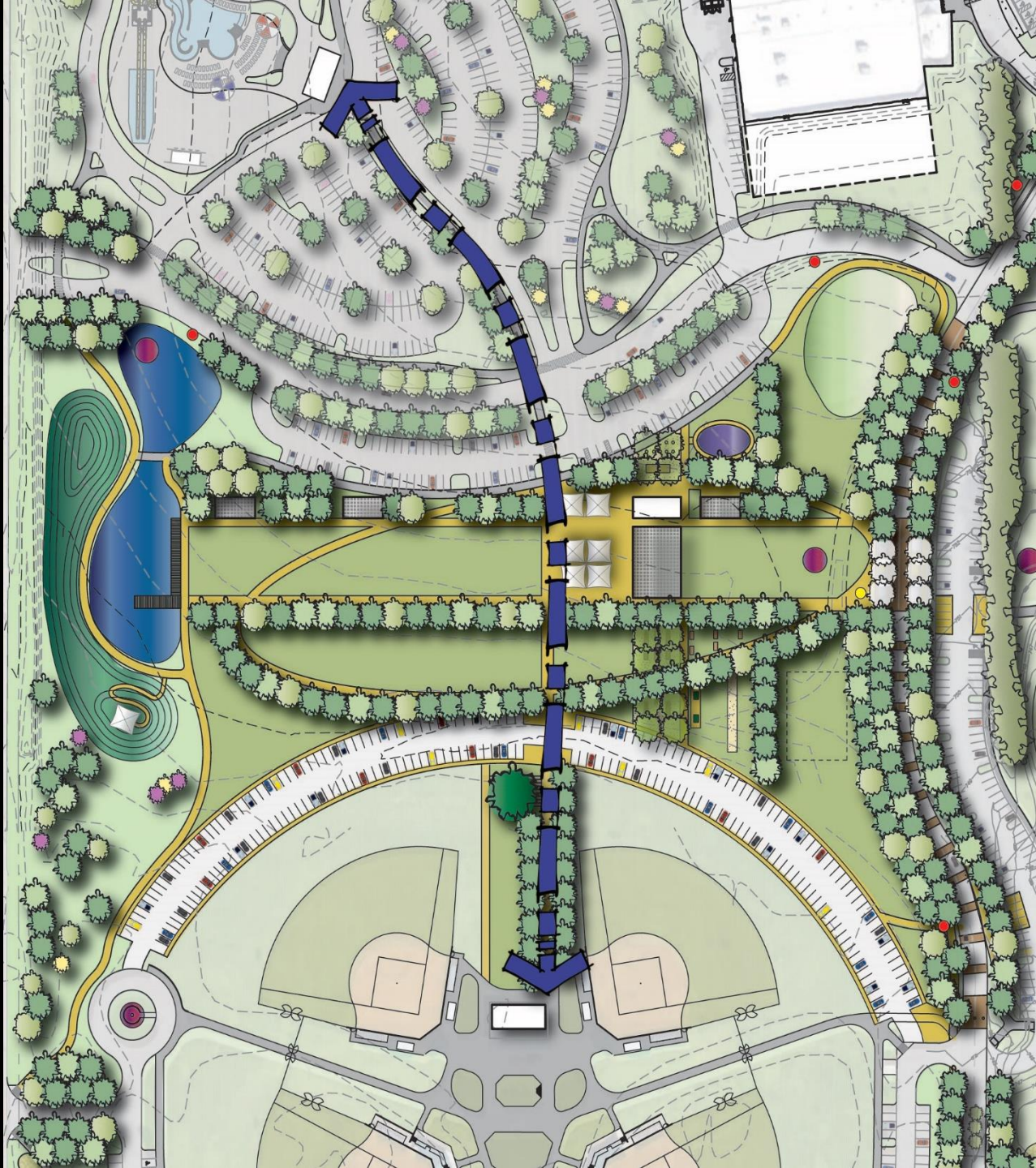
INPUT AND QUESTIONS

NEXT STEPS











JOHN AND JUDY GAY LIBRARY

EXPANSION

OPEN SPACE

JOGGING TRACK & OPEN SPACE

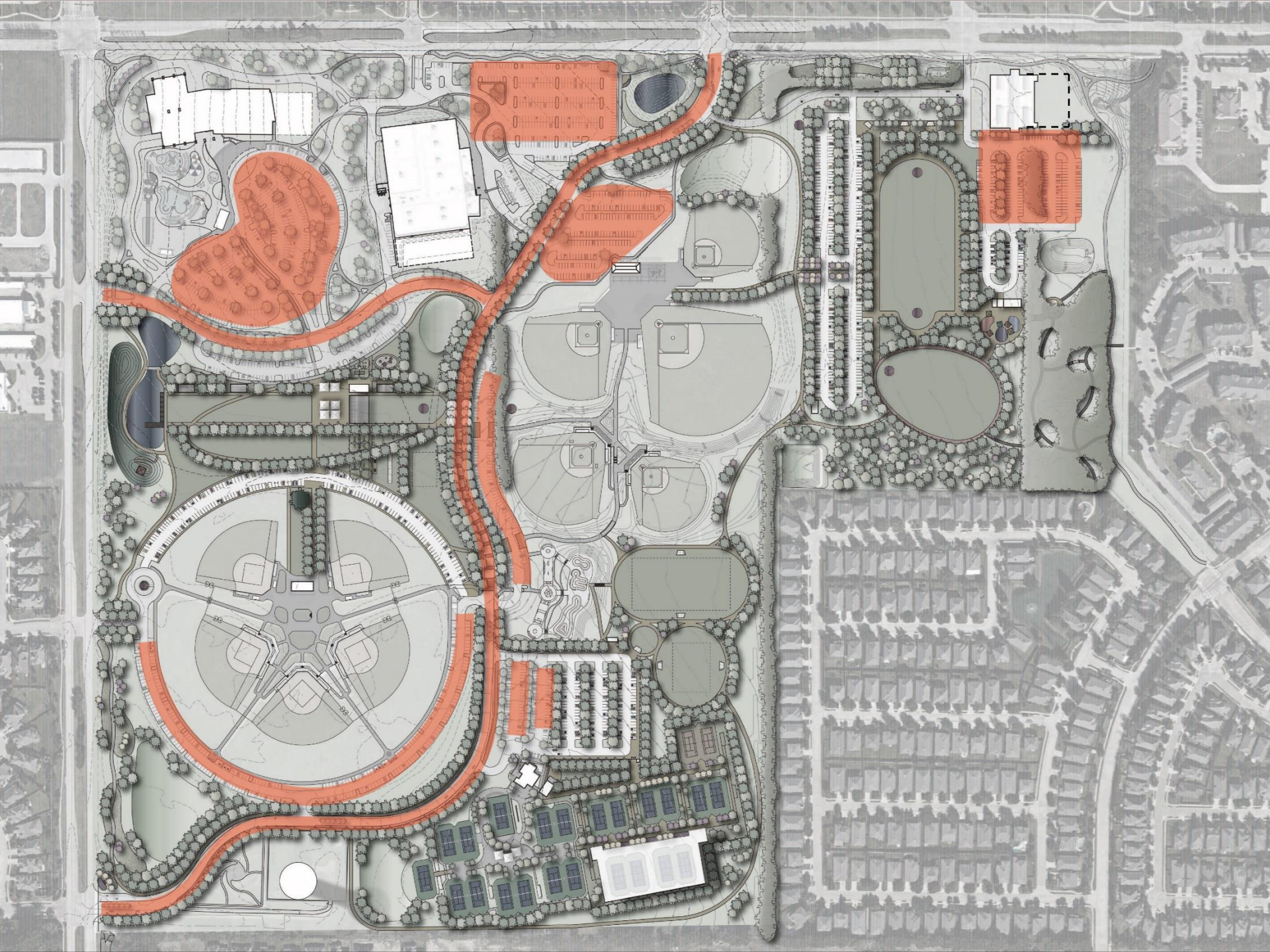
NATURE PLAY

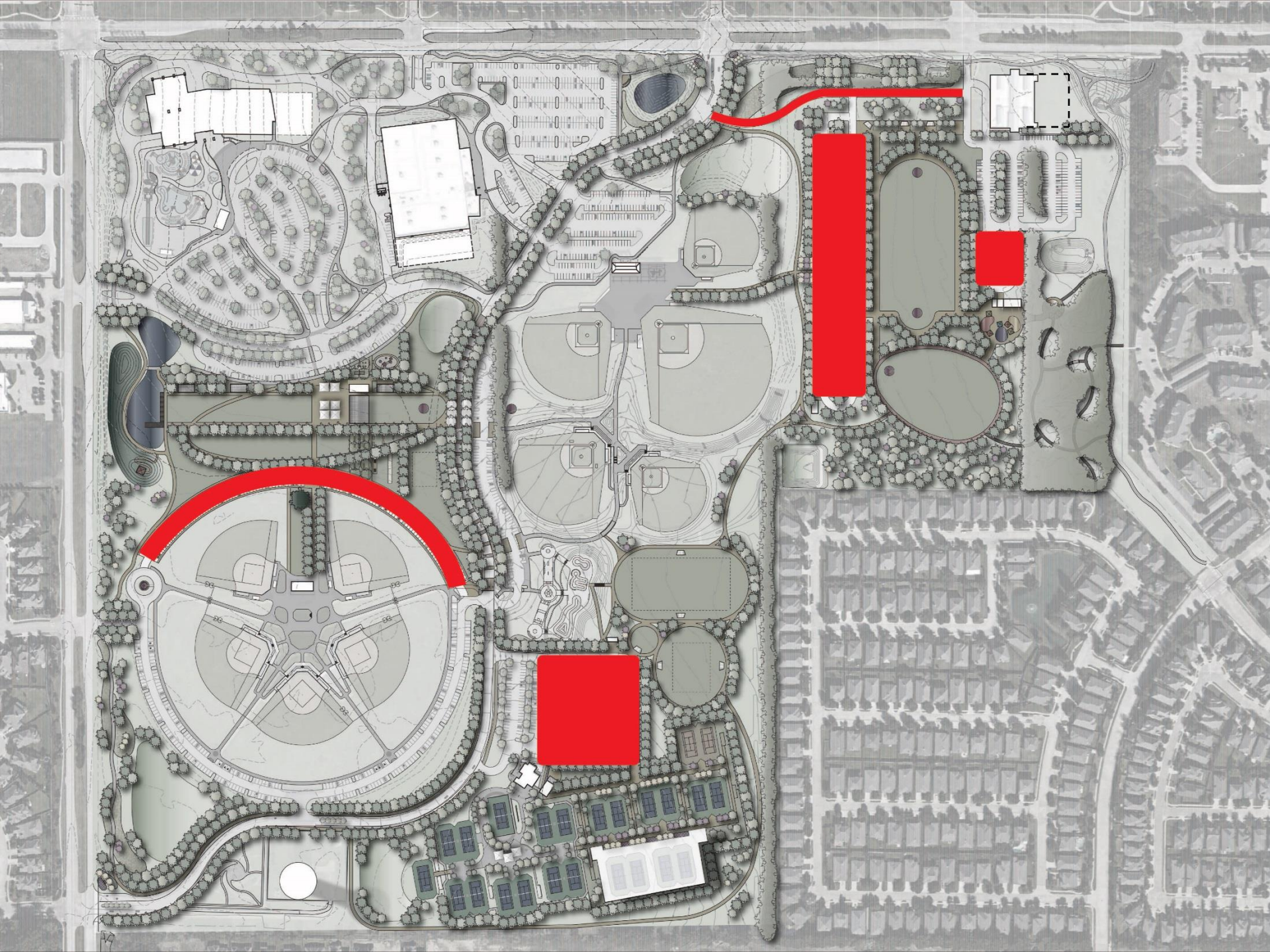
P
292

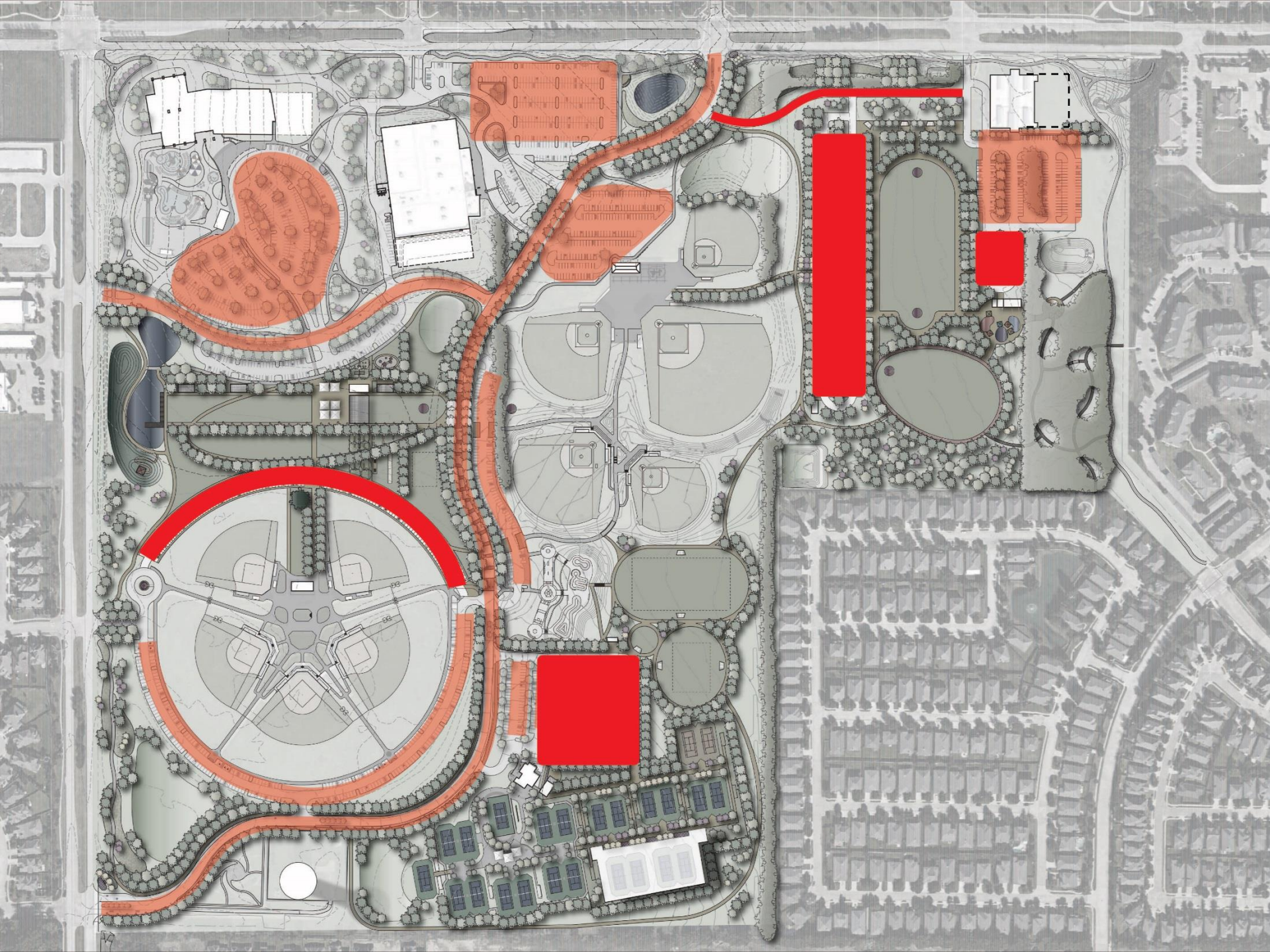
P
42

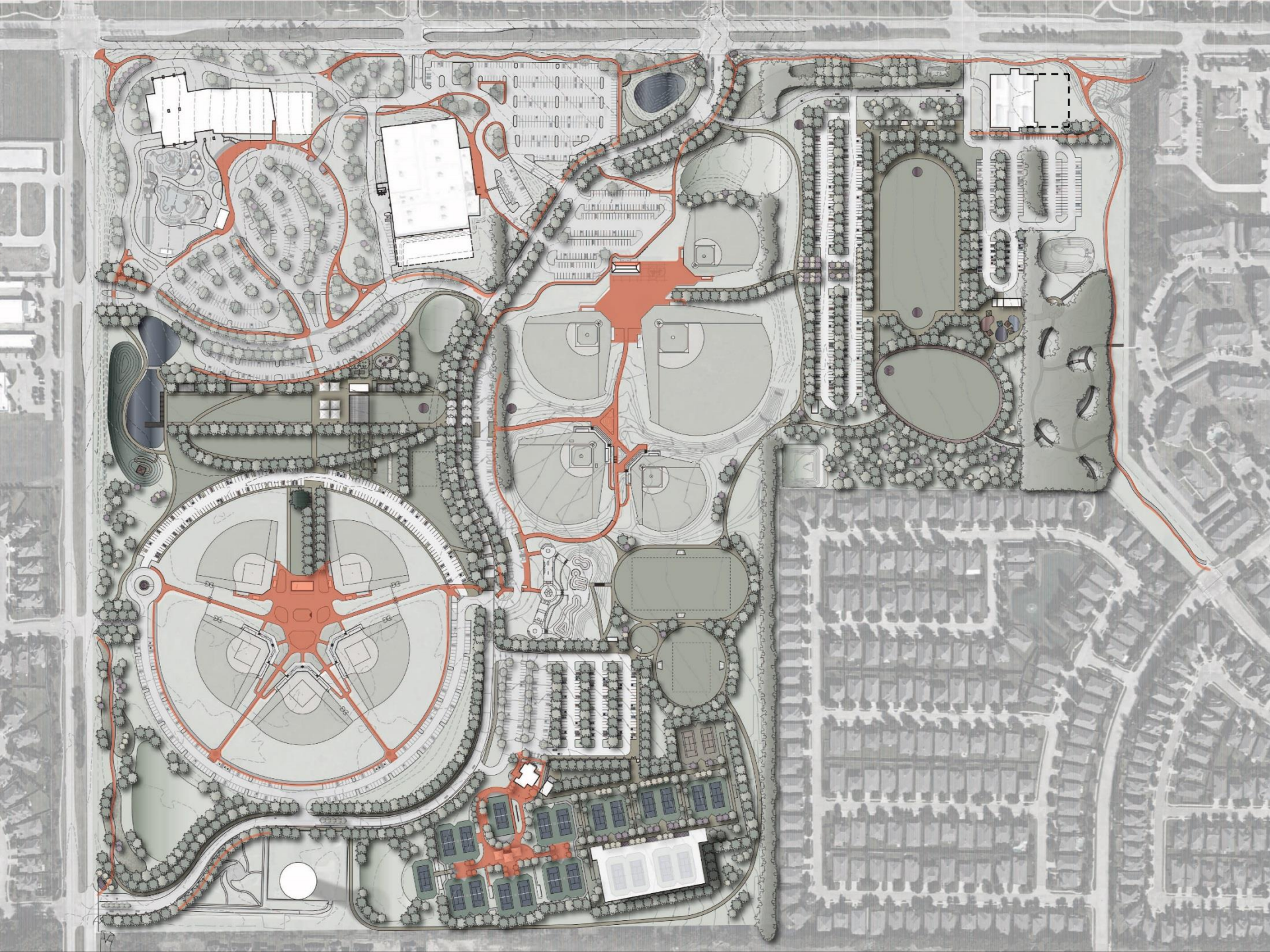
P
152

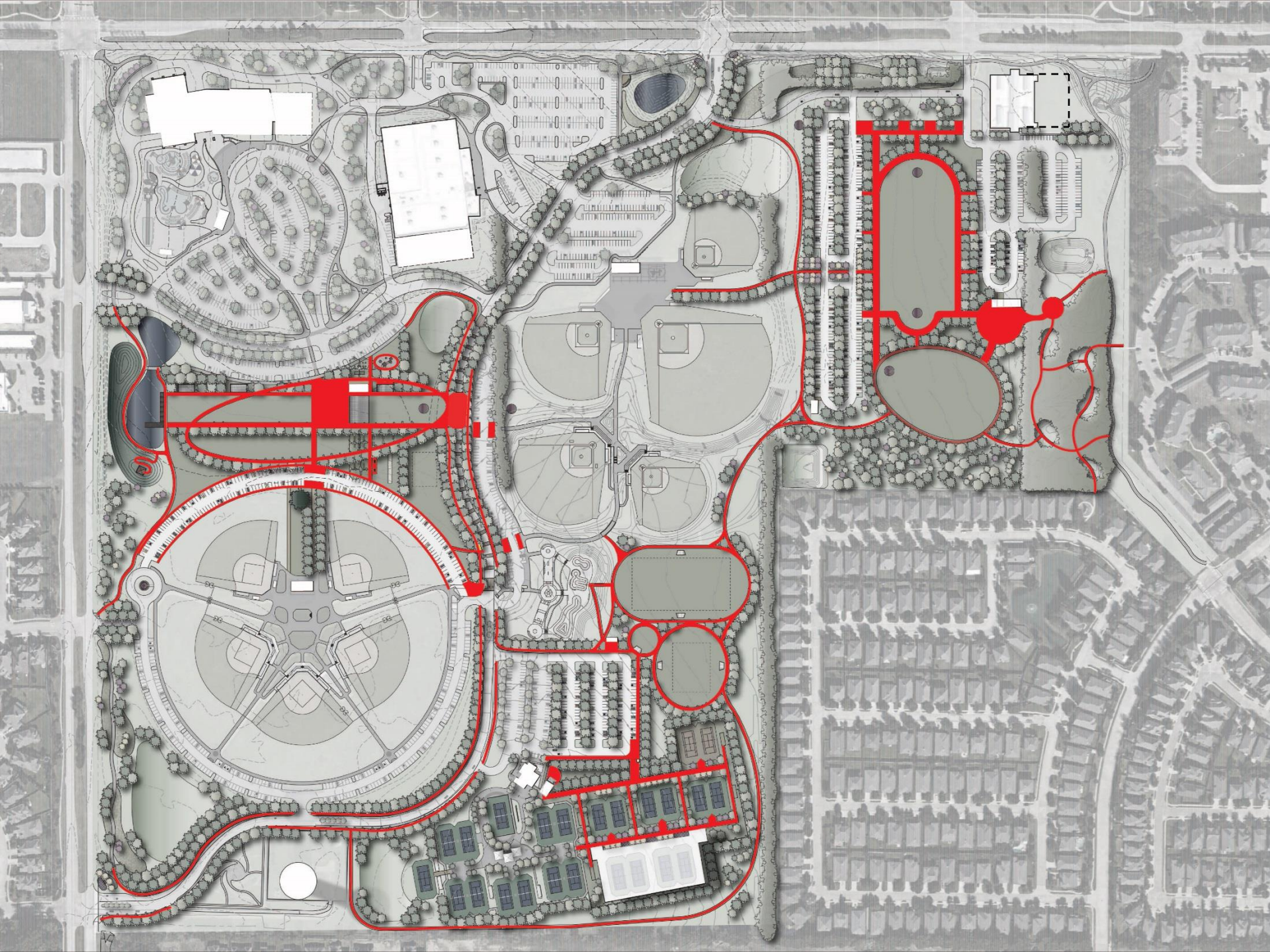


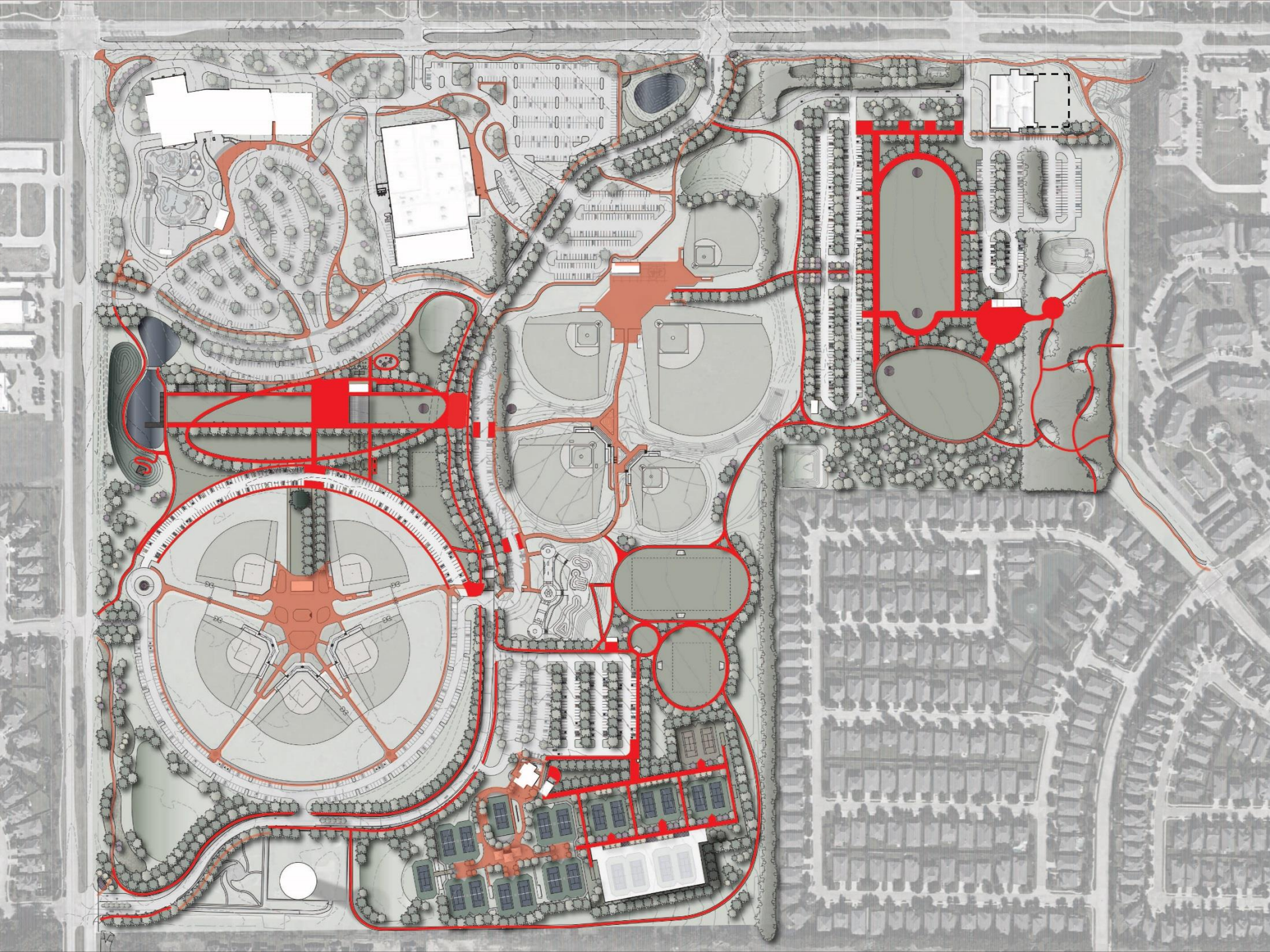










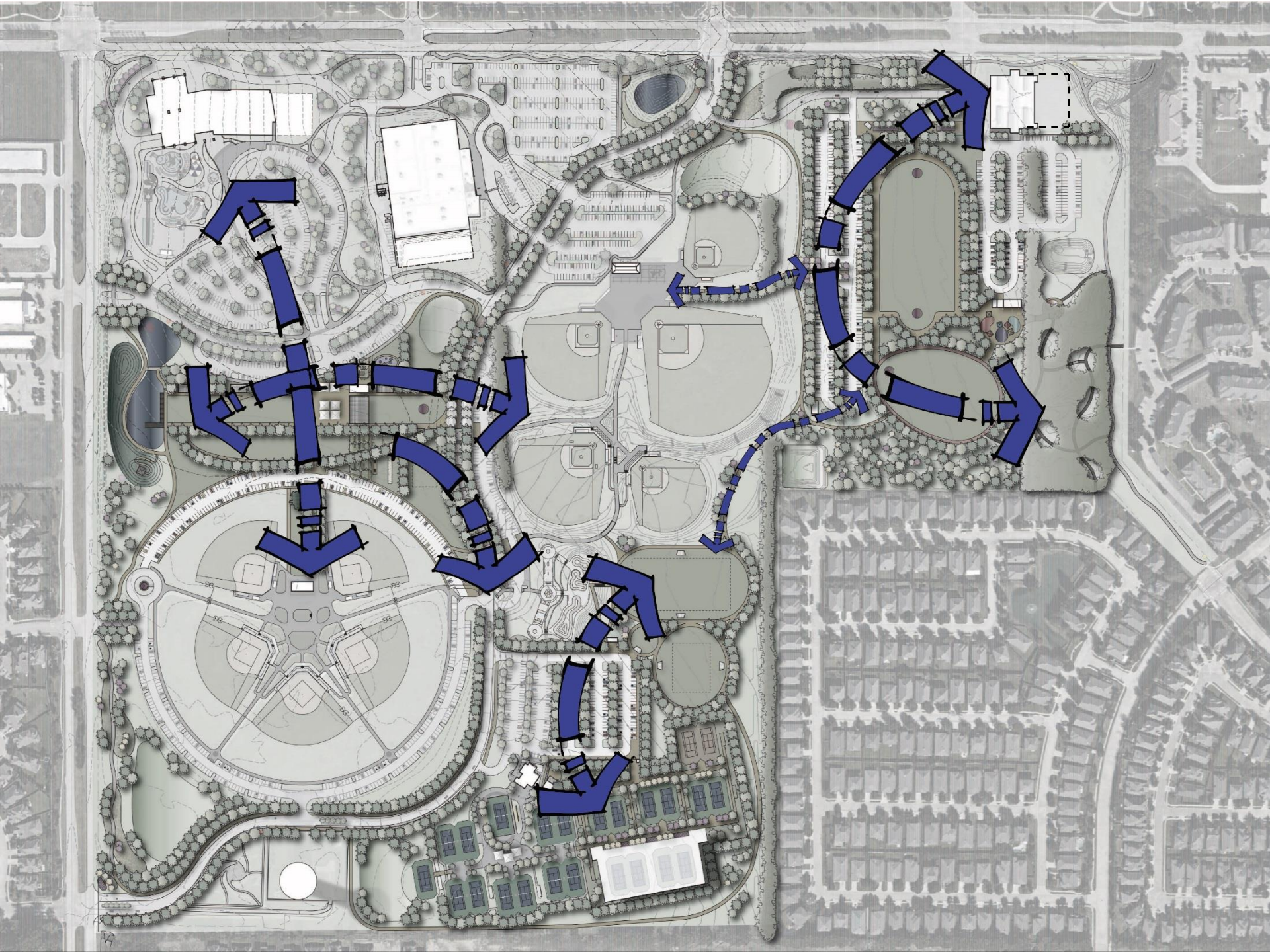


SUMMARY (EXISTING)

- ROAD
1 mile
- PARKING
1,383 spaces
- TRAIL
2.75 miles
- AMENITIES
2 playgrounds
0 improved open space
0 pavilions
2 restrooms

SUMMARY (PROPOSED)

- ROAD
.15 mi. additional
- PARKING
5 proposed lots
700 additional spaces
- TRAIL
3.50 additional miles
- NEW AMENITIES
5 additional playgrounds
5 improved open space
30 additional pavilions
3 additional restrooms



PURPOSE

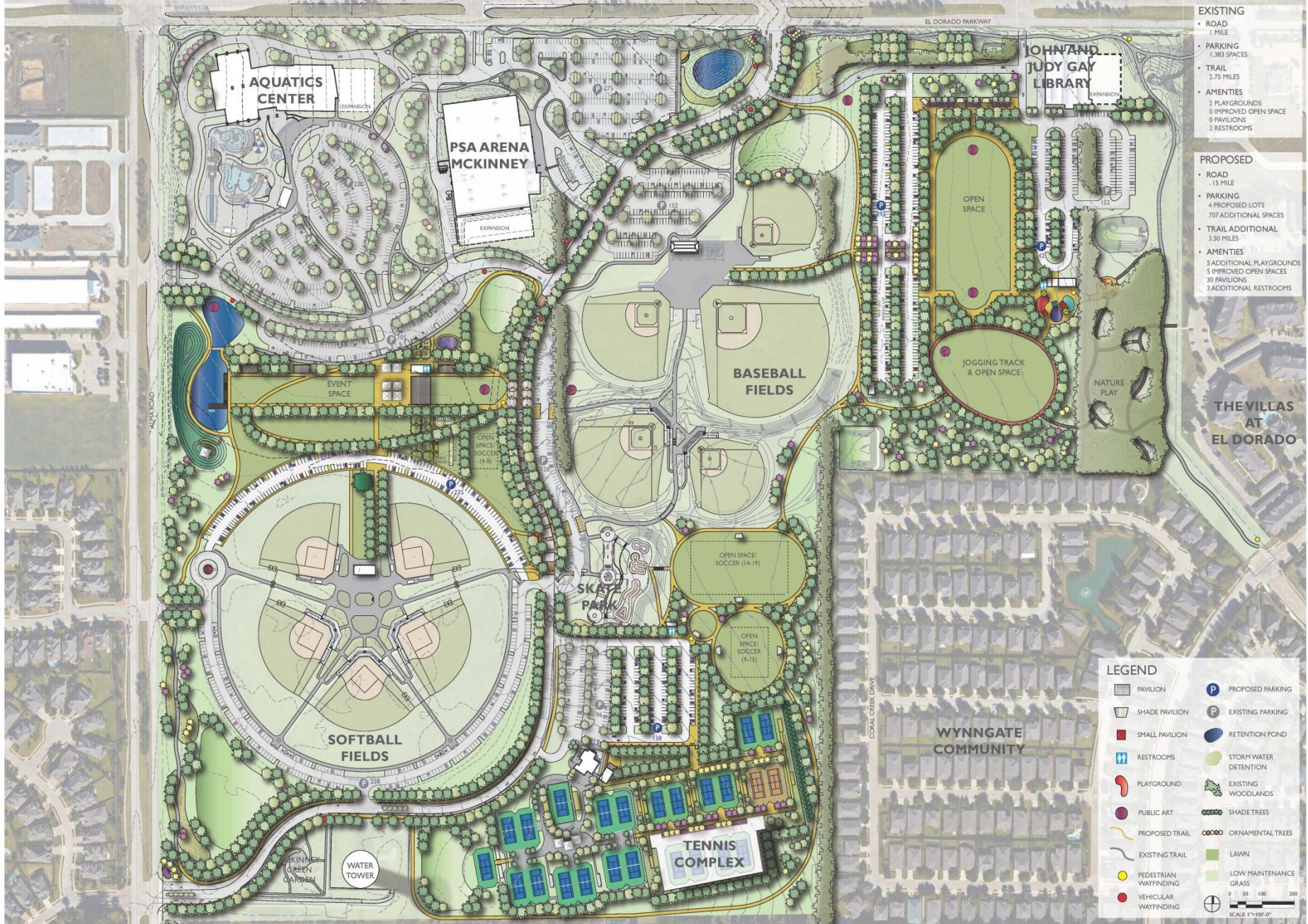
PROJECT HISTORY

PRELIMINARY DESIGNS

FINAL MASTER PLAN

INPUT AND QUESTIONS

NEXT STEPS



PURPOSE

PROJECT HISTORY

PRELIMINARY DESIGNS

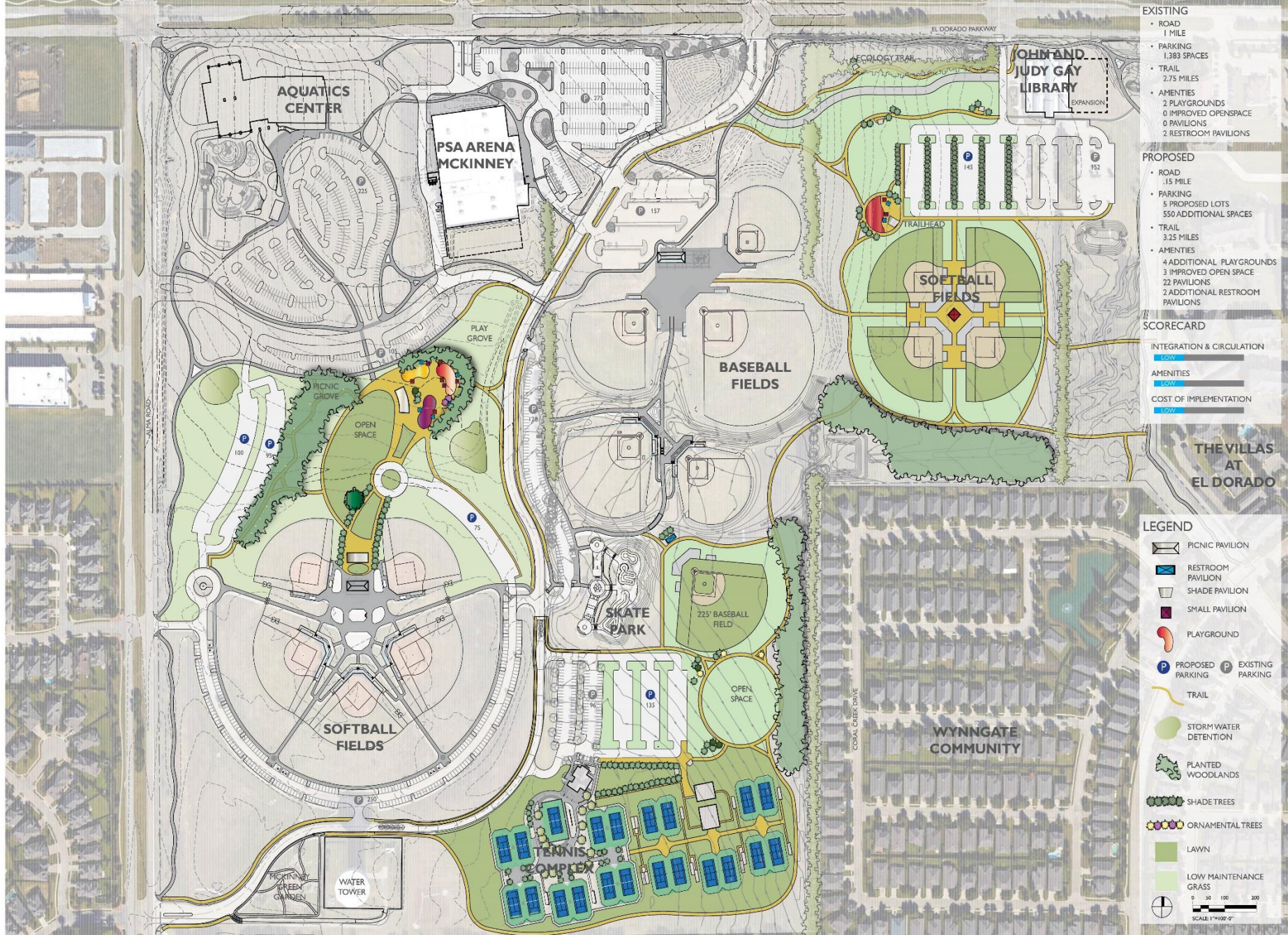
FINAL MASTER PLAN

INPUT AND QUESTIONS

NEXT STEPS

UPCOMING DATES

- **October 5th** – Council work session
- **October 8th** – Master Plan presentation to the Parks, Recreation Advisory Board for recommendation of approval to Council
- **October 20th** – Council approval Master Plan recommendation of approval to the City Council



EXISTING	
ROAD	1 MILE
PARKING	1,383 SPACES
TRAIL	2.75 MILES
AMENITIES	2 PLAYGROUNDS 0 IMPROVED OPENSOURCE 0 PAVILIONS 2 RESTROOM PAVILIONS
PROPOSED	
ROAD	.15 MILE
PARKING	5 PROPOSED LOTS 550 ADDITIONAL SPACES
TRAIL	3.25 MILES
AMENITIES	4 ADDITIONAL PLAYGROUNDS 3 IMPROVED OPEN SPACE 22 PAVILIONS 2 ADDITIONAL RESTROOM PAVILIONS
SCORECARD	
INTEGRATION & CIRCULATION	LOW
AMENITIES	LOW
COST OF IMPLEMENTATION	LOW

THE VILLAS AT EL DORADO

LEGEND	
	PICNIC PAVILION
	RESTROOM PAVILION
	SHADE PAVILION
	SMALL PAVILION
	PLAYGROUND
	PROPOSED PARKING
	EXISTING PARKING
	TRAIL
	STORM WATER DETENTION
	PLANTED WOODLANDS
	SHADE TREES
	ORNAMENTAL TREES
	LAWN
	LOW MAINTENANCE GRASS
	0 50 100 200 SCALE 1"=100'-0"



- EXISTING**
- ROAD 1 MILE
 - PARKING 1,383 SPACES
 - TRAIL 2.75 MILES
 - AMENITIES 2 PLAYGROUNDS
0 IMPROVED OPEN SPACE
0 PAVILIONS
2 RESTROOM PAVILIONS

- PROPOSED**
- ROAD .85 MILE
 - PARKING 4 PROPOSED LOTS
557 ADDITIONAL SPACES
 - TRAIL 3.50 MILES
 - AMENITIES 5 ADDITIONAL PLAYGROUNDS
3 IMPROVED OPEN SPACE
12 PAVILIONS
3 ADDITIONAL RESTROOM PAVILIONS

- SCORECARD**
- INTEGRATION & CIRCULATION **HIGH**
- AMENITIES **MEDIUM**
- COST OF IMPLEMENTATION **HIGH**

THE VILLAS AT EL DORADO

- LEGEND**
- PICNIC PAVILION
 - RESTROOM PAVILION
 - SHADE PAVILION
 - SMALL PAVILION
 - PLAYGROUND
 - PUBLIC ART
 - PROPOSED PARKING P EXISTING PARKING
 - TRAIL
 - STORM WATER DETENTION
 - PLANTED WOODLANDS
 - SHADE TREES
 - ORNAMENTAL TREES
 - LAWN
 - LOW MAINTENANCE GRASS
- 0 50 100 200
SCALE: 1"=100'-0"



- EXISTING**
- ROAD 1 MILE
 - PARKING 1,383 SPACES
 - TRAIL 2.75 MILES
 - AMENITIES 2 PLAYGROUNDS
0 IMPROVED OPEN SPACE
0 PAVILIONS
2 RESTROOM PAVILIONS
- PROPOSED**
- ROAD 50 MILE
 - PARKING 7 PROPOSED LOTS
502 ADDITIONAL SPACES
 - TRAIL 3.50 MILES
 - AMENITIES 1 ADDITIONAL PLAYGROUND
4 IMPROVED OPEN SPACE
11 PAVILIONS
2 ADDITIONAL RESTROOM PAVILIONS
- SCORECARD**
- INTEGRATION & CIRCULATION HIGH
- AMENITIES HIGH
- COST OF IMPLEMENTATION MEDIUM

THE VILLAS AT EL DORADO

- LEGEND**
- PICNIC PAVILION
 - RESTROOM PAVILION
 - SHADE PAVILION
 - SMALL PAVILION
 - PLAYGROUND
 - PUBLIC ART
 - PROPOSED PARKING
 - EXISTING PARKING
 - TRAIL
 - STORMWATER DETENTION
 - PLANTED WOODLANDS
 - SHADE TREES
 - ORNAMENTAL TREES
 - LAWN
 - LOW MAINTENANCE GRASS
- 0 50 100 200
SCALE: 1"=100' 0"