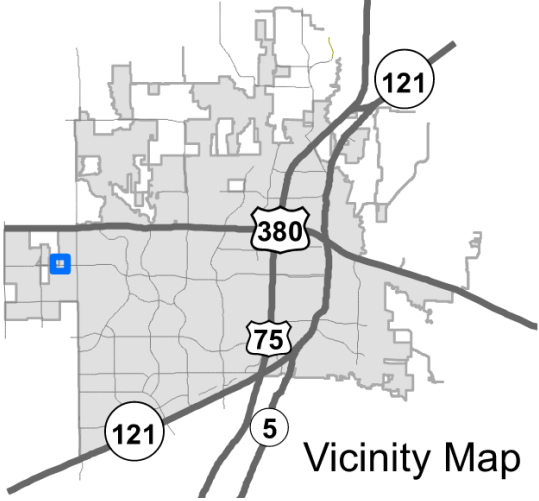
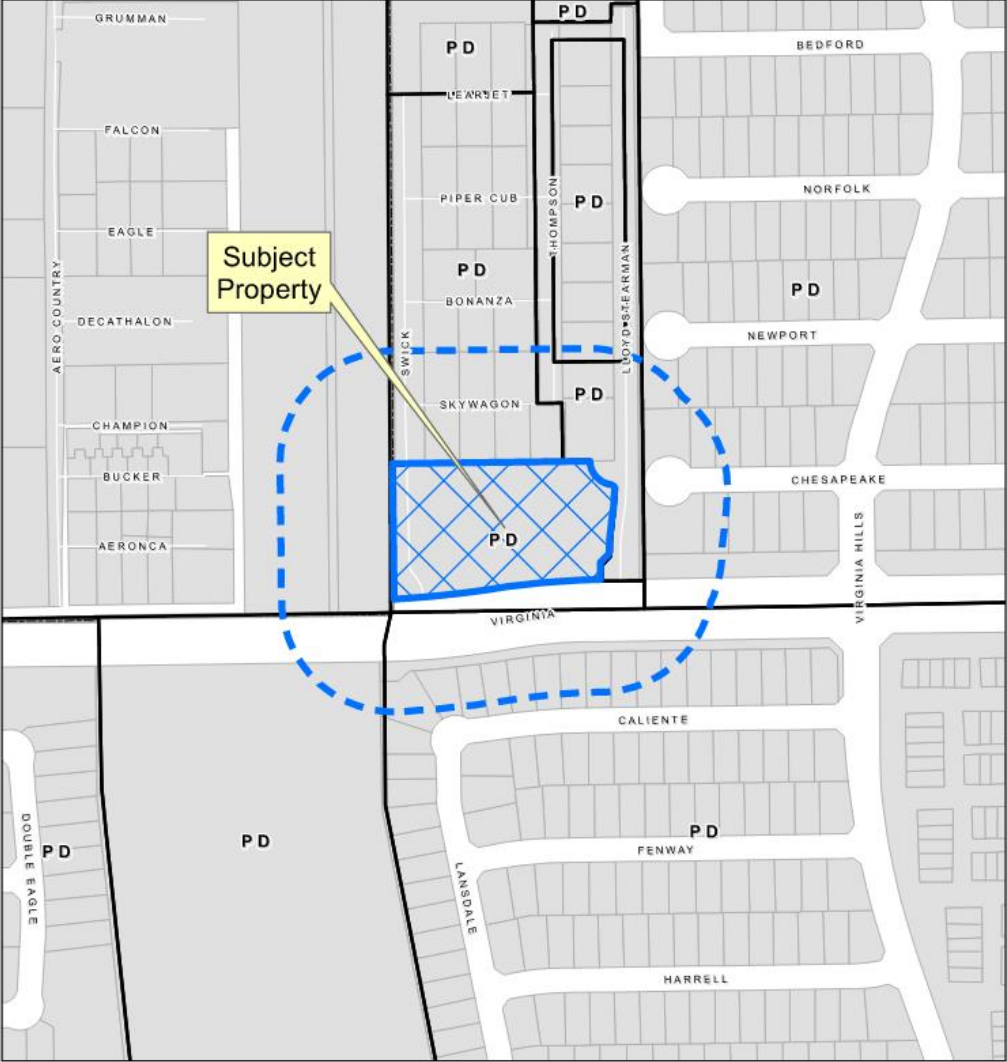


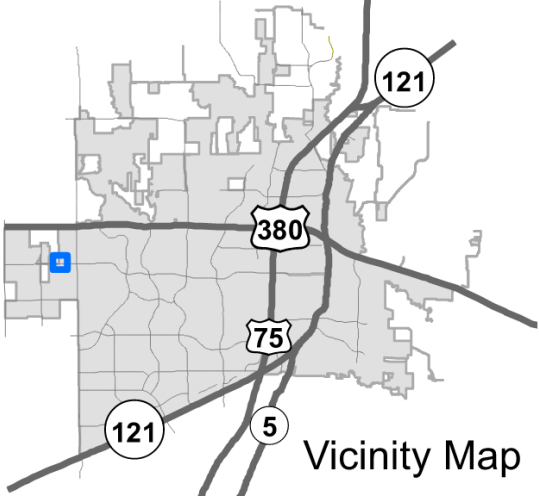
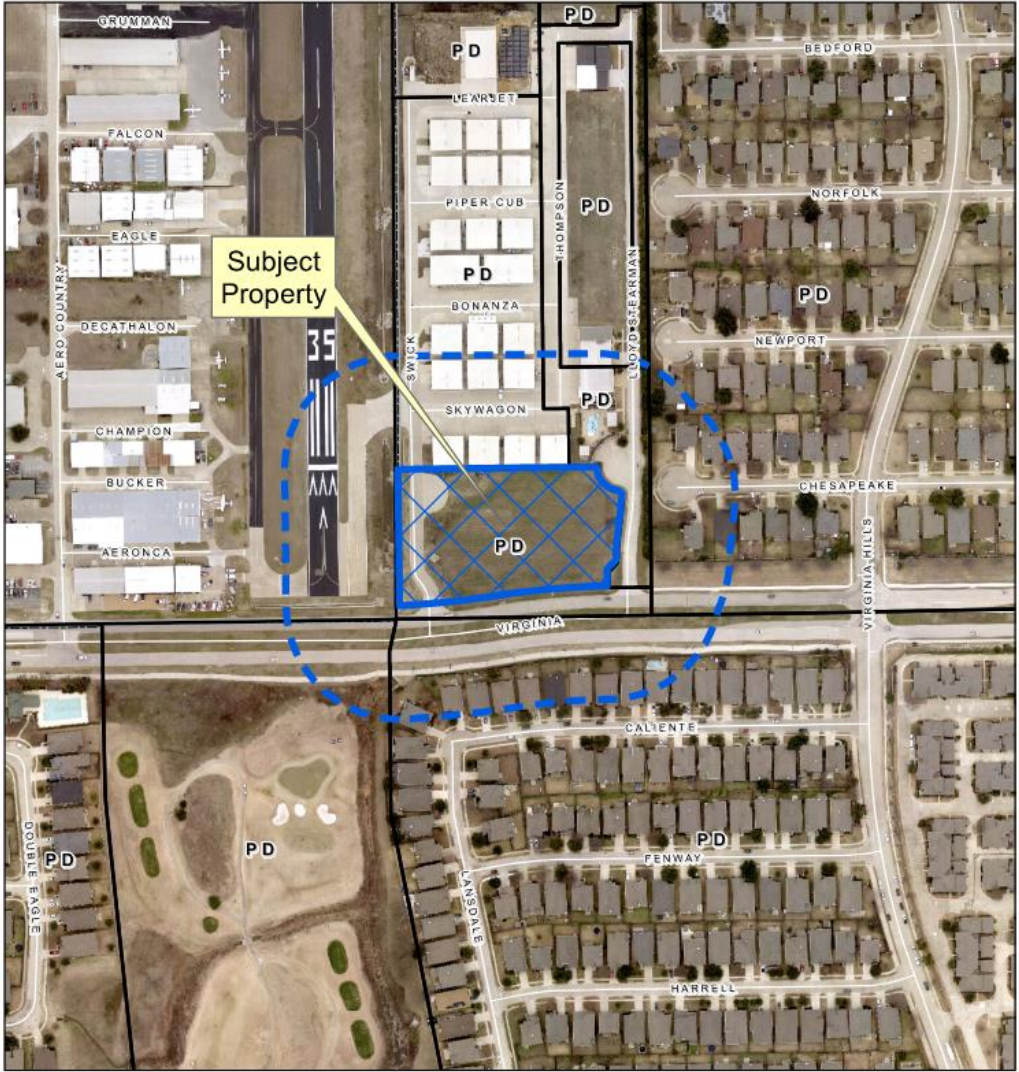
# Underdog Kennels Rezone

22-0083Z

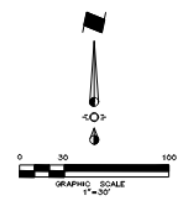
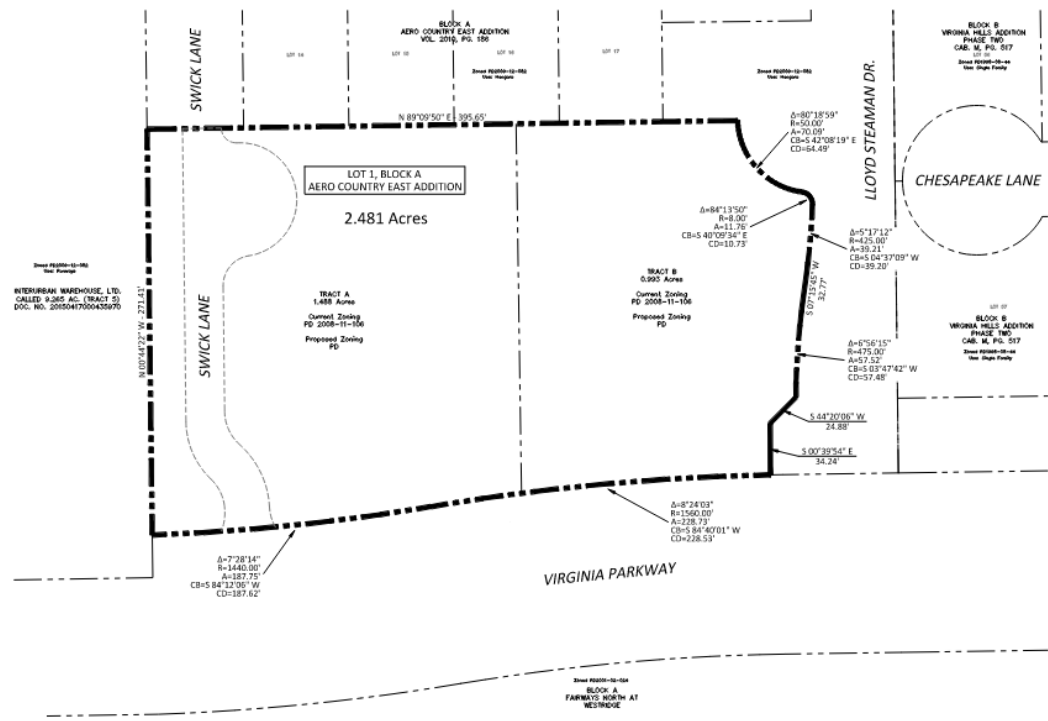
# Location Map



# Aerial Exhibit



# Proposed Zoning Exhibit



Block #2008-11-106  
Site Plan

INTERURBAN WAREHOUSE, LTD.  
CALLED 8.265 AC. (TRACT 5)  
DOC. NO. 2005041700435970

LOT 1, BLOCK A  
AERO COUNTRY EAST ADDITION

2.481 Acres

TRACT A  
1.488 Acres  
Current Zoning  
PD 2008-11-106  
Proposed Zoning  
PD

TRACT B  
0.993 Acres  
Current Zoning  
PD 2008-11-106  
Proposed Zoning  
PD

BLOCK B  
VIRGINIA HILLS ADDITION  
PHASE TWO  
CALLED 36.5 AC. PG. 517

BLOCK B  
VIRGINIA HILLS ADDITION  
PHASE TWO  
CALLED 36.5 AC. PG. 517

VIRGINIA PARKWAY

BLOCK A  
FARWAYS NORTH AT  
RETROCKE

**CITY BENCHMARK:**  
CON-35 = Asterisk (A) in concrete at the Southwest corner of Virginia Parkway and Pennington Drive. Elev. = 740.77

**SITE BENCHMARK:**  
MB-1 = "x" in northeast corner of concrete curb located on the south side of Virginia Parkway, 365 ft. east of the west line reference to the subject property. Elev. = 745.21  
MB-2 = "x" in northeast corner of concrete curb located on the west side of the subject area adjacent to the subject property and 181 ft. north of Virginia Parkway. Elev. = 745.11

Issue Number	Revision #	Date
1	1	
2	2	
3	3	
4	4	
5	5	
6	6	

**CROSS ENGINEERING CONSULTANTS**  
1625 N. Virginia Street  
McKinney, Texas 75069  
Phone (972) 542-1428  
Fax (972) 542-1428  
www.cross-engineering.com

NOTE: THIS IS NOT A CONSTRUCTION DOCUMENT.  
THIS DOCUMENT IS FOR CONCEPTUAL PLANNING PURPOSES ONLY.

**ZONING EXHIBIT**  
UNDERDOG KENNELS  
LOT 1, BLOCK A  
AERO COUNTRY EAST ADDITION  
MCKINNEY, TEXAS

Issue No. **ZE**  
Project No. 22034

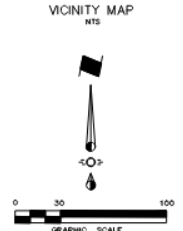
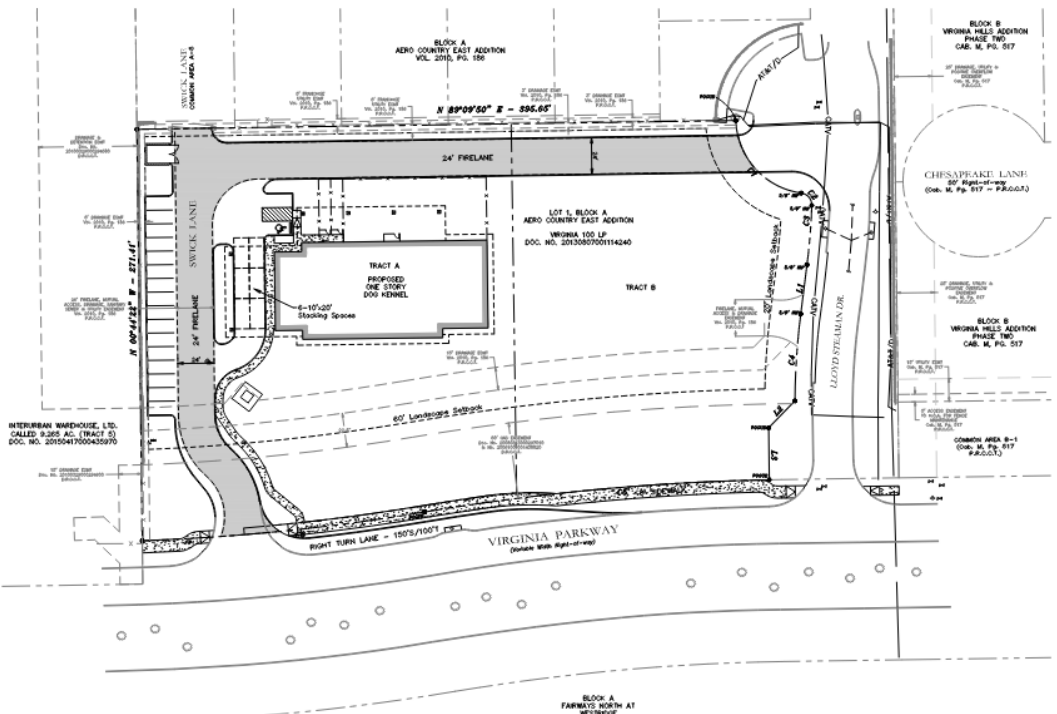
**ENGINEER:**  
Gree Engineering Consultants, Inc.  
1725 W. Virginia Street  
McKinney, Texas 75069  
Phone (972) 562-4409  
Fax (972) 562-4471  
Contact: Jon D'Amico, P.E.

**ARCHITECT:**  
Hend Associates Architects  
3033 Katelyn Drive, Suite 120  
Corvallis, Texas 75008  
Phone (972) 415-4696  
Email: hend@hend.com  
Contact: Aaron Babcock

**SURVEYOR:**  
Riley & Associates  
701 S. Tompkins St.  
McKinney, TX 75069  
Phone (972) 542-1266  
Fax (972) 542-1682  
Contact: Lawrence Riley



# Proposed Concept Layout



**LINE TABLE:**

LINE NUMBER	BEARING	DISTANCE
1	N 89°45'52" W	271.14'
2	S 89°45'52" E	271.14'
3	S 89°45'52" E	271.14'
4	N 89°45'52" W	271.14'

**CURVE TABLE:**

CURVE NO.	CHORD BEARING	CHORD DISTANCE	ARC BEARING	ARC DISTANCE	PI POINT BEARING	PI POINT DISTANCE	PC POINT BEARING	PC POINT DISTANCE	PT POINT BEARING	PT POINT DISTANCE
1	N 89°45'52" W	271.14'	89°45'52"	271.14'	N 89°45'52" W	271.14'	N 89°45'52" W	271.14'	N 89°45'52" W	271.14'
2	S 89°45'52" E	271.14'	89°45'52"	271.14'	S 89°45'52" E	271.14'	S 89°45'52" E	271.14'	S 89°45'52" E	271.14'
3	S 89°45'52" E	271.14'	89°45'52"	271.14'	S 89°45'52" E	271.14'	S 89°45'52" E	271.14'	S 89°45'52" E	271.14'
4	N 89°45'52" W	271.14'	89°45'52"	271.14'	N 89°45'52" W	271.14'	N 89°45'52" W	271.14'	N 89°45'52" W	271.14'

**CITY BENCHMARK:**  
 COM-38 = Maximum Elev. in concrete at the Southwest corner of Virginia Parkway and Ferginette Drive. Elev. = 740.77'

**SITE BENCHMARK:**  
 BM-1 = "1" in northeast corner of concrete curb located on the north side of Virginia Parkway 100' east of the east line address to the subject property. Elev. = 744.31'  
 BM-2 = "2" in northeast corner of concrete curb located on the east side of the subject area address to the subject property and 100' east of Virginia Parkway. Elev. = 747.11'

Issue Number	Revision Description
1	1
2	2
3	3
4	4
5	5
6	6

**CROSS ENGINEERING CONSULTANTS**  
 1720 W. Virginia Street  
 McKinney, Texas 75068  
 Phone (972) 562-4400  
 Fax (972) 562-4471  
 Contact: Jon Davis Orsee, P.E.

**CONCEPTUAL SITE PLAN**  
 UNDERDOG KENNELS  
 LOT 1, BLOCK A  
 AERO COUNTRY EAST ADDITION  
 MCKINNEY, TEXAS

Sheet No.  
**CSP**  
 Project No.  
 220104

NOTE: THIS IS NOT A CONSTRUCTION DOCUMENT.  
 THIS DOCUMENT IS FOR CONCEPTUAL PLANNING PURPOSES ONLY.

**ENGINEER:**  
 Orsee Engineering Consultants, Inc.  
 1720 W. Virginia Street  
 McKinney, Texas 75068  
 Phone (972) 562-4400  
 Fax (972) 562-4471  
 Contact: Jon Davis Orsee, P.E.

**ARCHITECT:**  
 H&B Associates Architects  
 3033 Katelyn Drive, Suite 100  
 Carrollton, Texas 75006  
 Phone (972) 416-6908  
 Email: hba@hba.com  
 Contact: Aaron Babcock

**SURVEYOR:**  
 Stigley & Associates  
 705 S. Tennessee St.  
 McKinney, TX 75068  
 Phone (972) 542-1286  
 Fax (972) 542-1652  
 Contact: Lawrence Stigley



