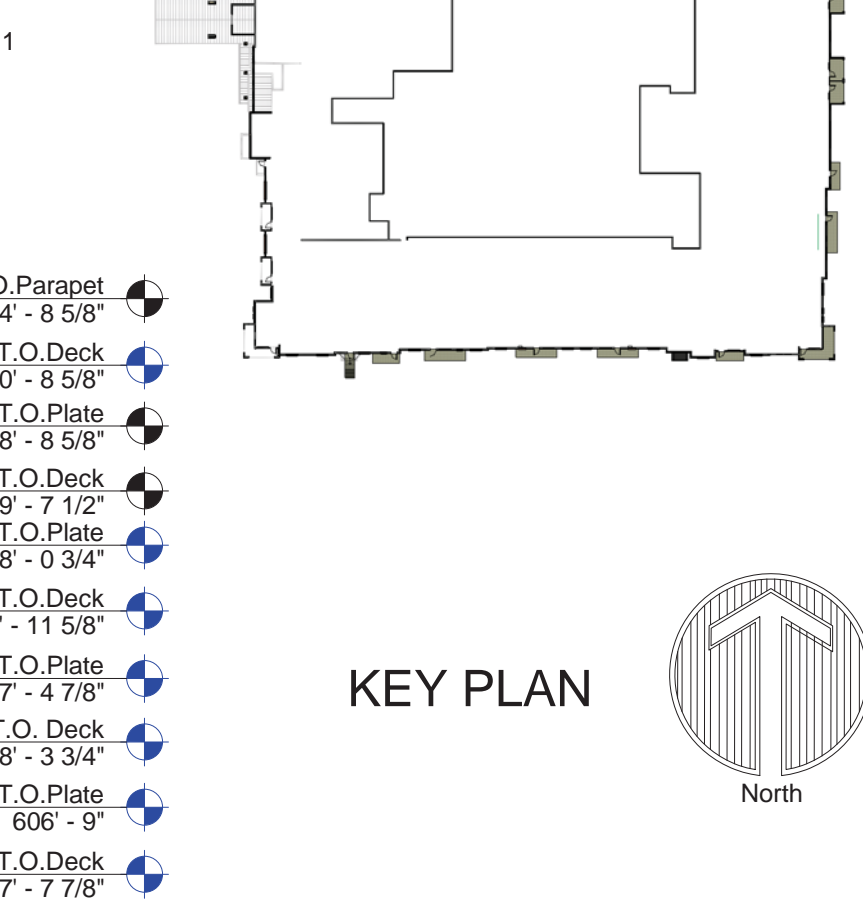




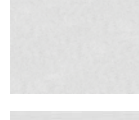

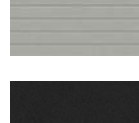
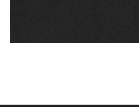

12/27/2021 5:42:06 PM



1 WEST ELEVATION  
1/16" = 1'-0"



2 NORTH ELEVATION  
1/16" = 1'-0"

MATERIAL LEGEND		
	RED BRICK VENEER	/ ACME, HIGHLAND PARK OR SIMILAR
	STONE VENEER	/ COLORADO STONE, TEXAS CREAM OR SIMILAR
	STUCCO VENEER - LIGHT GREY	/ SERWIN WILLIAMS #SW6191, CONTENTED
	HARDI LAP SIDING - LIGHT GREY	/ SERWIN WILLIAMS #SW6191, CONTENTED
	HARDI LAP SIDING - MEDIUM GREY	/ SERWIN WILLIAMS #SW6208, PEWTER GREEN
	HARDI BOARD - DARK GREY	/ SERWIN WILLIAMS #SW6990, CAVIAR
	STANDING SEAM METAL ROOFING & RAILING	

Material Calculations_NORTH				
Elevation Facing Direction	Material Type	Material	Region Area	Percentage of Material
NORTH	Masonry	Red Brick Veneer	11,120 SF	53.90%
NORTH	Masonry	Stone Veneer	1,168 SF	5.66%
NORTH		Stucco Veneer	3,643 SF	17.66%
NORTH		Hardi Lap Siding	4,700 SF	22.78%
Grand total			20,631 SF	100.00%

Material Calculations_WEST				
Elevation Facing Direction	Material Type	Materials	Region Area	Percentage of Material
WEST	Masonry	Red Brick Veneer	6,177 SF	36.13%
WEST	Masonry	Stone Veneer	2,956 SF	17.29%
WEST		Stucco Veneer	2,267 SF	13.28%
WEST		Hardi Lap Siding	5,686 SF	33.32%
Grand total			17,087 SF	100.00%

WATERMERE AT MCKINNEY  
MCKINNEY, TEXAS

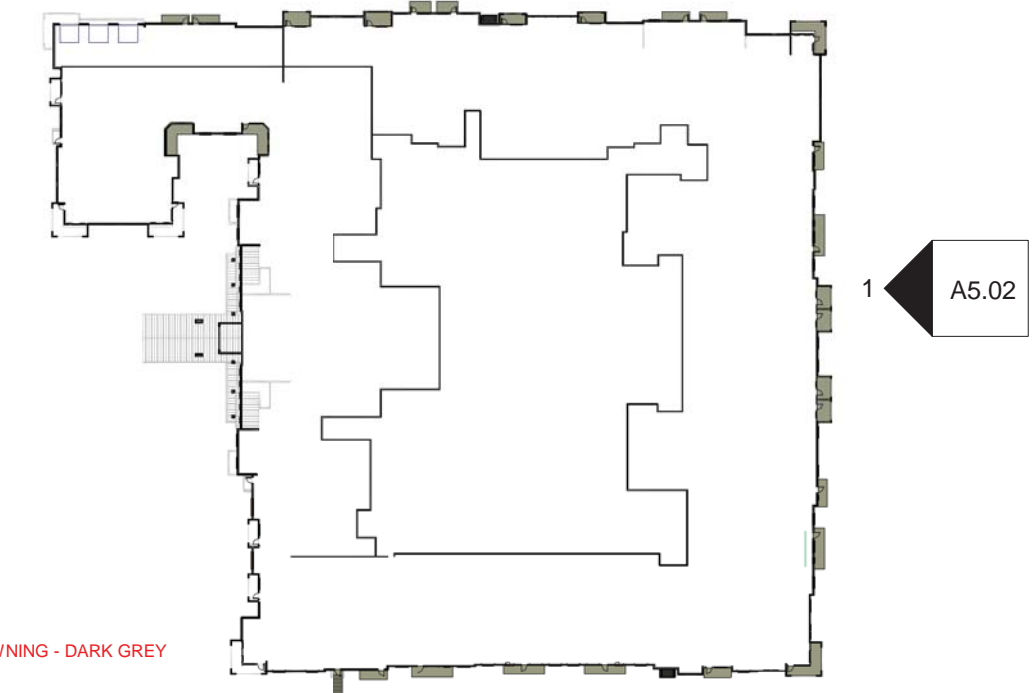
ARRIVE ARCHITECTURE GROUP  
Architecture Planning Project Management  
2344 Highway 121 · Suite 100 · Bedford, Texas 76021 · www.ArriveAG.com  
Ph 817.514.0584 · Fx 817.514.0694

SEAL  
09/29/2021

REVISION  
DRAWN BY: AAG  
CHECKED BY: JMT  
ISSUED FOR: SITE PLAN SUBMISSION  
SUBMITTAL DATE: 09/29/2021  
SCALE: As indicated  
SHEET NO. A5.01



12/20/21 8:46:45 PM



- Roof T.O. Parapet 644' - 8 5/8"
- 06-Roof T.O. Deck 640' - 8 5/8"
- 05-Fifth Floor T.O. Plate 638' - 8 5/8"
- 05-Fifth Floor T.O. Deck 629' - 11 1/2"
- 04-Fourth Floor T.O. Plate 628' - 0 3/4"
- 04-Fourth Floor T.O. Deck 618' - 11 5/8"
- 03-Third Floor T.O. Plate 617' - 4 7/8"
- 03-Third Floor T.O. Deck 608' - 3 3/4"
- 02-Second Floor T.O. Plate 606' - 9"
- 02-Second Floor T.O. Deck 597' - 7 7/8"
- 01-First Floor T.O. Plate 596' - 1 1/8"
- MID-POINT ELEVATION 592' - 6"
- 01-First Floor T.O. Slab 587' - 0"
- Ground Floor T.O. Plate 585' - 5 1/4"
- Ground Floor T.O. Slab 575' - 0"

1 EAST ELEVATION  
1/16" = 1'-0"



- Roof T.O. Parapet 644' - 8 5/8"
- 06-Roof T.O. Deck 640' - 8 5/8"
- 05-Fifth Floor T.O. Plate 638' - 8 5/8"
- 05-Fifth Floor T.O. Deck 629' - 7 1/2"
- 04-Fourth Floor T.O. Plate 628' - 0 3/4"
- 04-Fourth Floor T.O. Deck 618' - 11 5/8"
- 03-Third Floor T.O. Plate 617' - 4 7/8"
- 03-Third Floor T.O. Deck 608' - 3 3/4"
- 02-Second Floor T.O. Plate 606' - 9"
- 02-Second Floor T.O. Deck 597' - 7 7/8"
- 01-First Floor T.O. Plate 596' - 1 1/8"
- MID-POINT ELEVATION 592' - 6"
- 01-First Floor T.O. Slab 587' - 0"
- Ground Floor T.O. Plate 585' - 5 1/4"

2 SOUTH ELEVATION  
1/16" = 1'-0"

MATERIAL LEGEND

	RED BRICK VENEER	/ ACME, HIGHLAND PARK OR SIMILAR
	STONE VENEER	/ COLORADO STONE, TEXAS CREAM OR SIMILAR
	STUCCO VENEER - LIGHT GREY	/ SERWIN WILLIAMS #SW6191, CONTENTED
	HARDI LAP SIDING - LIGHT GREY	/ SERWIN WILLIAMS #SW6191, CONTENTED
	HARDI LAP SIDING - MEDIUM GREY	/ SERWIN WILLIAMS #SW6208, PEWTER GREEN
	HARDI BOARD - DARK GREY	/ SERWIN WILLIAMS #SW6990, CAVIAR
	STANDING SEAM METAL ROOFING & RAILING	

Material Calculations\_EAST

Elevation Facing Direction	Material Type	Material	Region Area	Percentage of Material
EAST	Masonry	Red Brick Veneer	12,266 SF	59.97%
EAST	Masonry	Stone Veneer	1,277 SF	6.24%
EAST		Hardi Lap Siding	3,859 SF	18.87%
EAST		Stucco Veneer	3,051 SF	14.92%
Grand total			20,453 SF	100.00%

Material Calculations\_SOUTH

Elevation Facing Direction	Material Type	Material	Region Area	Percentage of Material
SOUTH	Masonry	Red Brick Veneer	10,267 SF	50.02%
SOUTH	Masonry	Stone Veneer	1,724 SF	8.4%
SOUTH		Hardi Lap Siding	4,572 SF	22.27%
SOUTH		Stucco Veneer	3,965 SF	19.31%
Grand total			20,528 SF	100%

WATERMERE AT MCKINNEY  
MCKINNEY, TEXAS

ARRIVE  
ARCHITECTURE GROUP  
Architecture  
Planning  
Project Management  
2344 Highway 121 • Suite 100 • Bedford, Texas 76021 • www.ArriveAG.com  
Ph 817.514.0584 • Fx 817.514.0694

SEAL  
09/29/2021

REVISION  
DRAWN BY: Author  
CHECKED BY: Checker  
ISSUED FOR: SITE PLAN SUBMISSION  
SUBMITTAL DATE: 09/29/2021  
SCALE: As indicated  
SHEET NO. A5.02



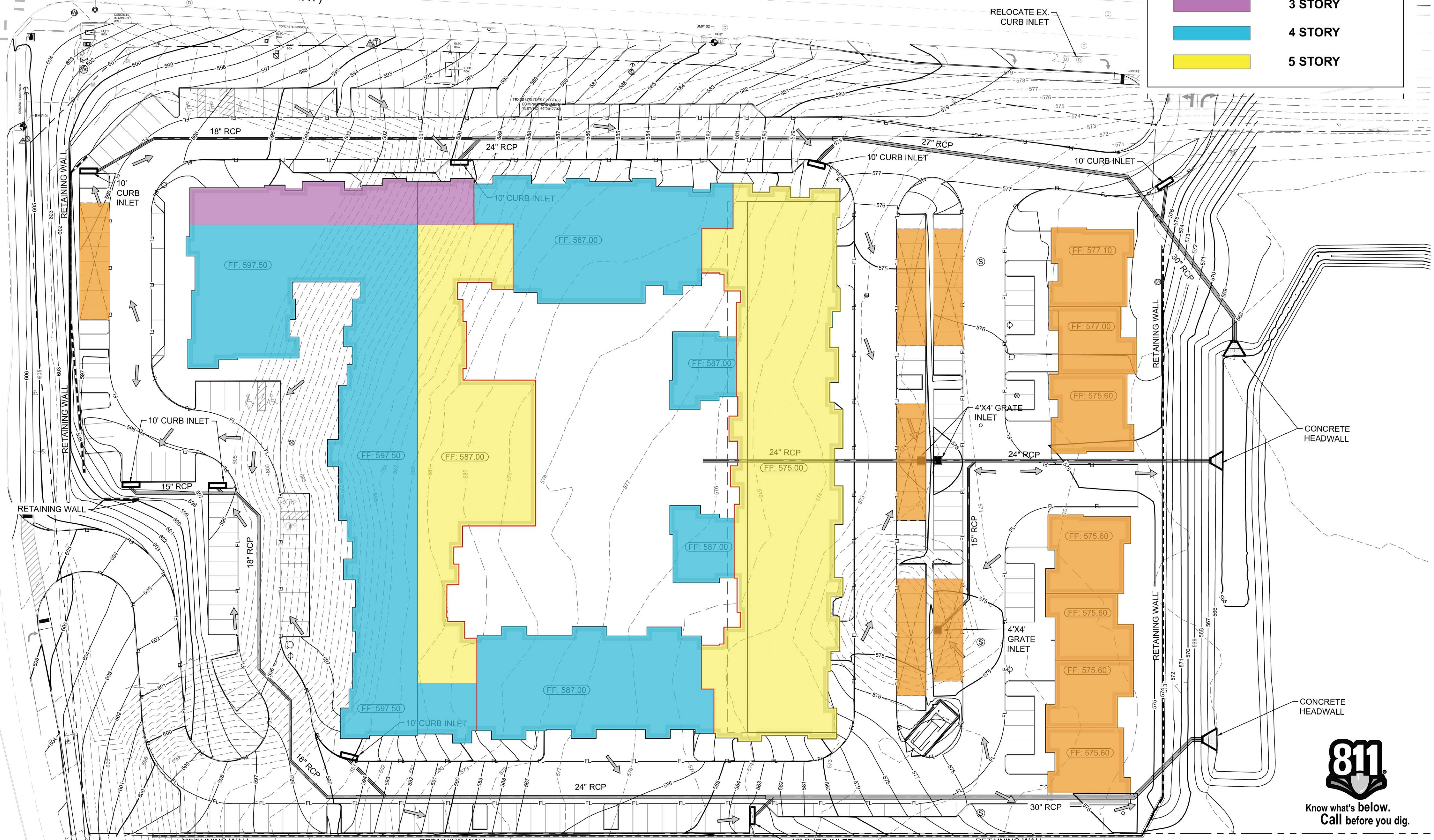
This document, together with the concepts and design presented herein, is intended only for the specific purpose and client for which it was prepared. Abuse of and improper reliance on this document without written authorization and adaptation by Kinley-Horn and Associates, Inc. shall be without liability to Kinley-Horn and Associates, Inc.

**HARDIN BOULEVARD**  
(A VARIABLE WIDTH RIGHT-OF-WAY)

**VIRGINIA PARKWAY**  
(A VARIABLE WIDTH RIGHT-OF-WAY)

**BLDG HEIGHT LEGEND**

- 1 STORY
- 3 STORY
- 4 STORY
- 5 STORY



**BUILDING STORY DIAGRAM**



Know what's below.  
Call before you dig.

**LEGEND**

— 731 —	PROPOSED CONTOURS	x717.23 TP	TOP OF PAVEMENT
- - - 731 - - -	EXISTING CONTOURS	x717.23 TC	TOP OF CURB
—▲—	HIGH POINT	x717.23 TG	TOP OF GRATE
- - -	CHANNEL FLOWLINE	x717.23 ME	MATCH EXISTING
→	FLOW PATH	x717.23 TS	TOP OF STEPS
⊠	TRANSFORMER PAD	x717.23 BS	BOTTOM OF STEPS
(FF: 700.00)	FINISHED FLOOR	x717.23 EW	END OF WALL
x717.2 EX	TOP OF EXISTING GROUND	x717.23 TW	TOP OF WALL
x717.23	TOP OF GROUND	x717.23 BW	BOTTOM OF WALL

**WATERMERE AT MCKINNEY**  
MCKINNEY, TEXAS

**ARRIVE** ARCHITECTURE GROUP  
Architecture Planning Project Management  
2344 Highway 121 - Suite 100 - Bedford, Texas 76021 - www.ArriveAG.com  
Ph: 817.514.0584 - Fx: 817.514.0584

SEAL

**REVISION**

NO.	DATE	DESCRIPTION

**DRAWN BY:** AAG      **CHECKED BY:** JMT  
**PLOT DATE:**      **REV. DATE:**      **SCALE:** AS NOTED







