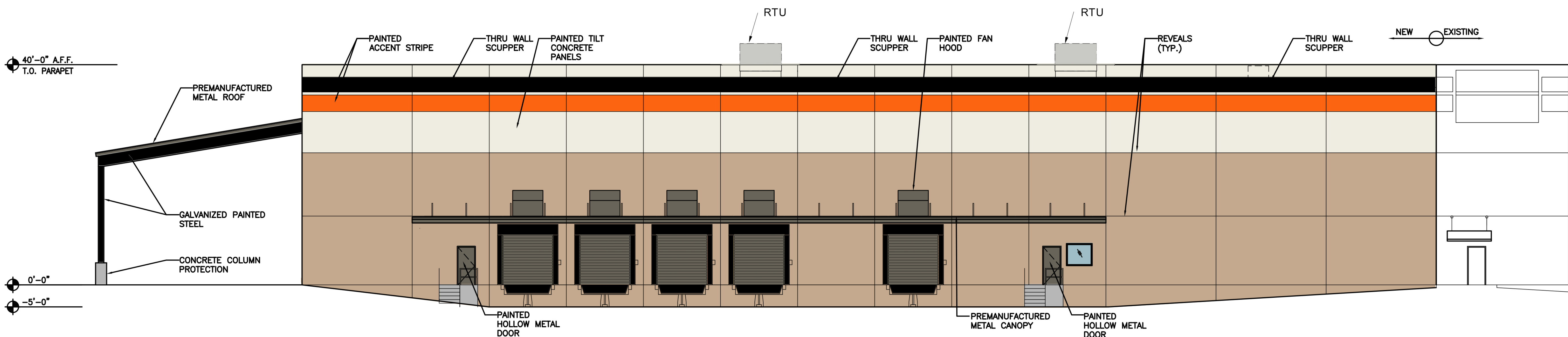


WEST ELEVATION

SCALE: 1" = 10'-0"

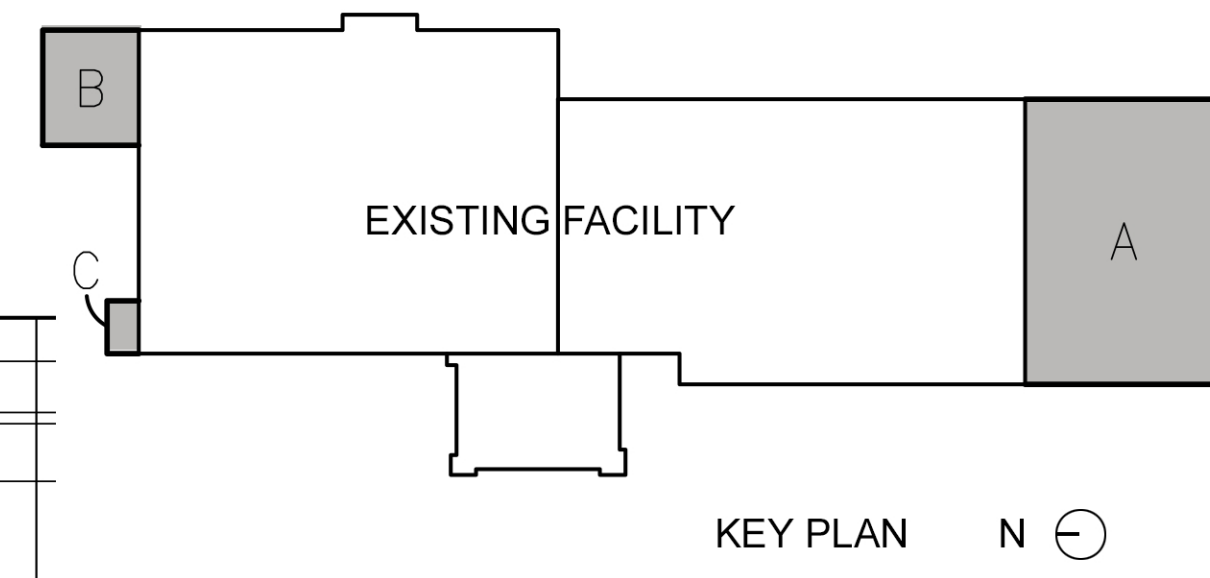
EXPANSION 'A'						
MATERIAL	SOUTH	PERCENT	EAST	PERCENT	WEST	PERCENT
PAINTED TILT PANEL (COLOR 1)	3044.1 SF	27.1%	2128.7 SF	26.2%	2129 SF	27.8%
PAINTED TILT PANEL (COLOR 2)	6506.7 SF	57.9%	4833.5 SF	59.4%	4369.6 SF	57%
PAINTED TILT PANEL (COLOR 3)	891.1 SF	7.9%	618 SF	7.6%	617.9 SF	8%
PAINTED TILT PANEL (COLOR 4)	791.9 SF	7.1%	549.3 SF	6.8%	549.3 SF	7.2%
TOTAL	11233.8SF		8129.6 SF		7665.8 SF	
OPENINGS	646.1 SF	5.4%	761.5 SF	8.6%	574.4 SF	7%
TOTAL	11879.9SF		8891.1 SF		8240.2 SF	

*NOTE: PAINT COLORS TO MATCH EXISTING

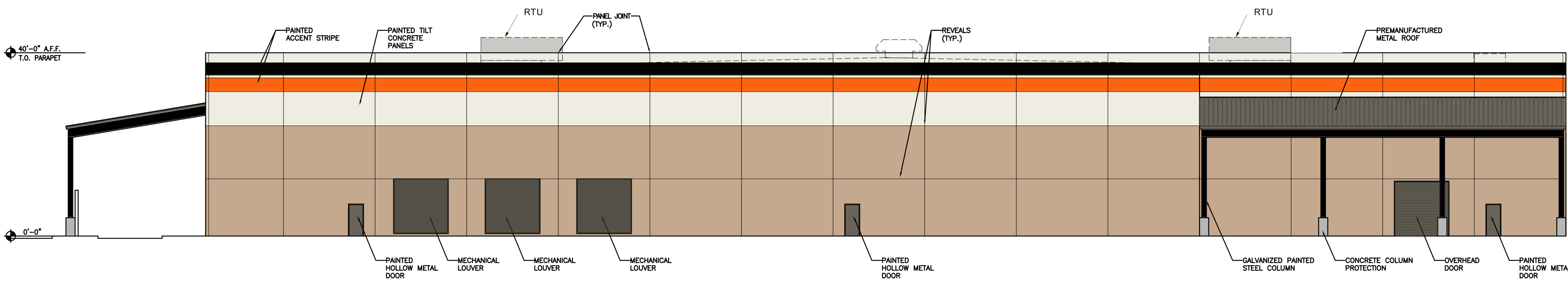


EAST ELEVATION

SCALE: 1" = 10'-0"



SIMPSON STRONG TIE PHASE 3 SITE PLAN CASE: 2016 - 252 SP	
OWNER	SIMPSON STRONG TIE 2221 COUNTRY LANE MCKINNEY, TEXAS 75069
ARCHITECT	ROUCH ARCHITECTS 1701 NORTH MARKET ST. #200 DALLAS, TEXAS 75202



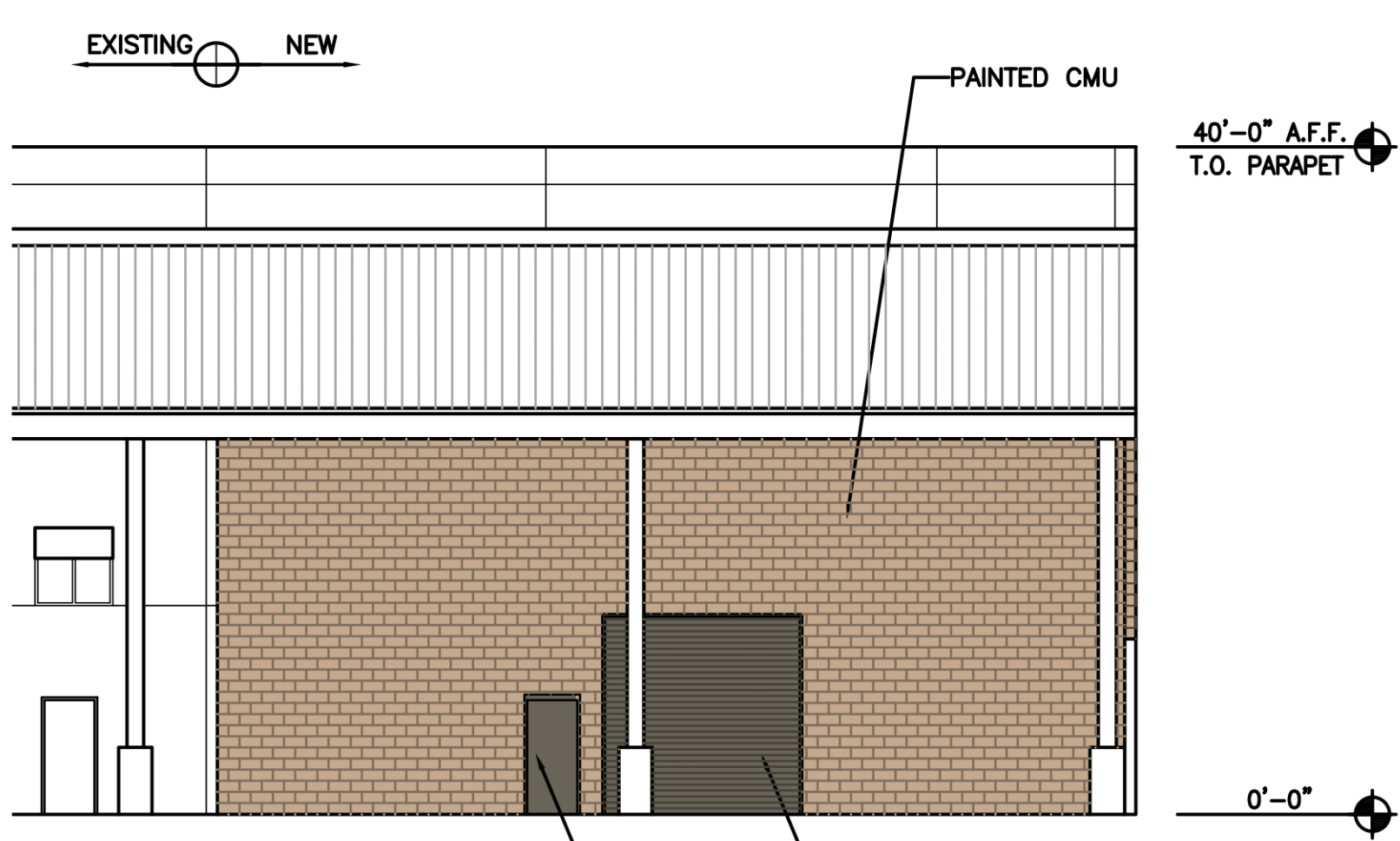
SOUTH ELEVATION

SCALE: 1" = 10'-0"



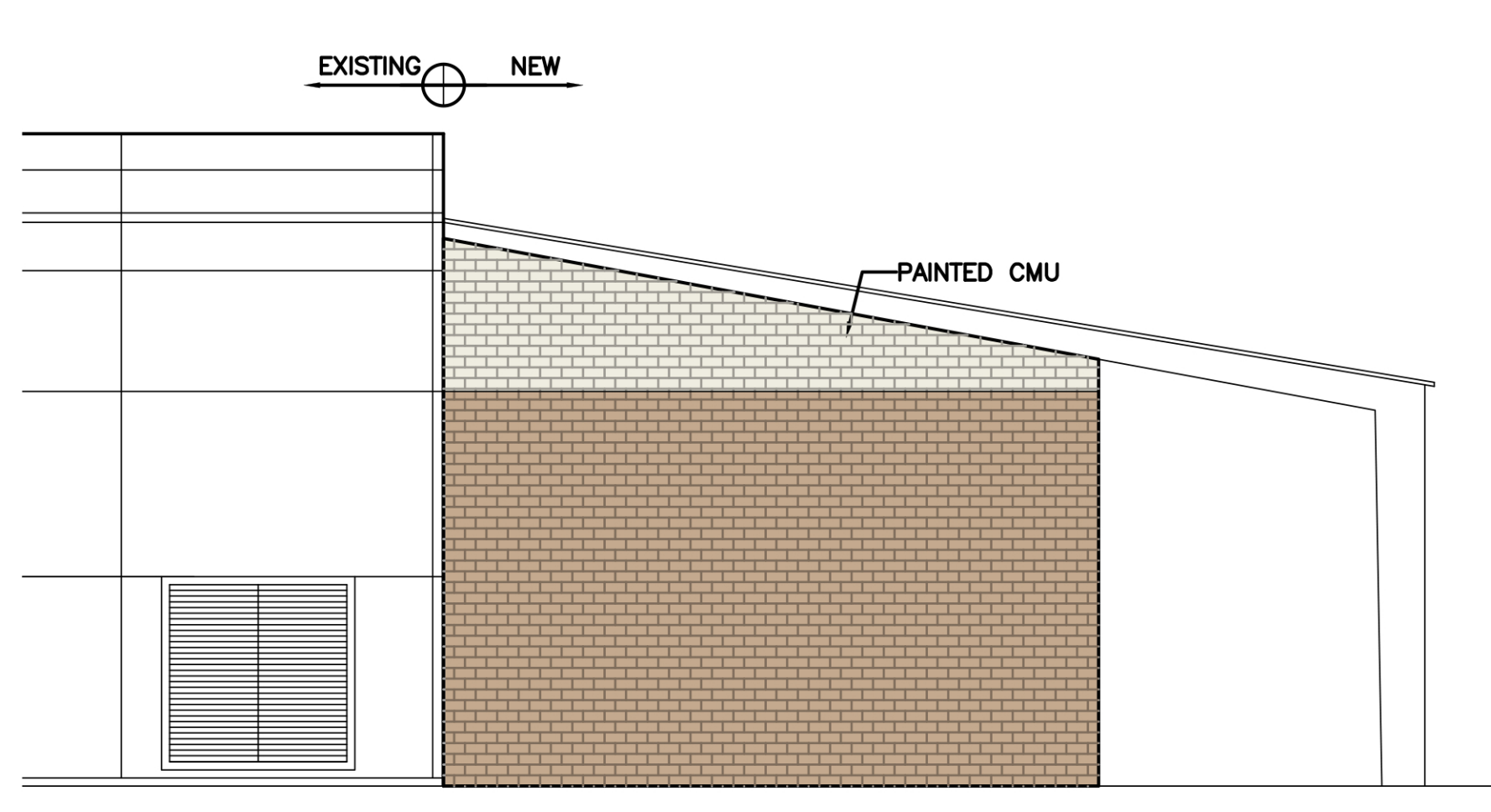
ROUCH ARCHITECTS 2016 ©

RECEIVED
By Planning Department at 8:42 am, Feb 14, 2017



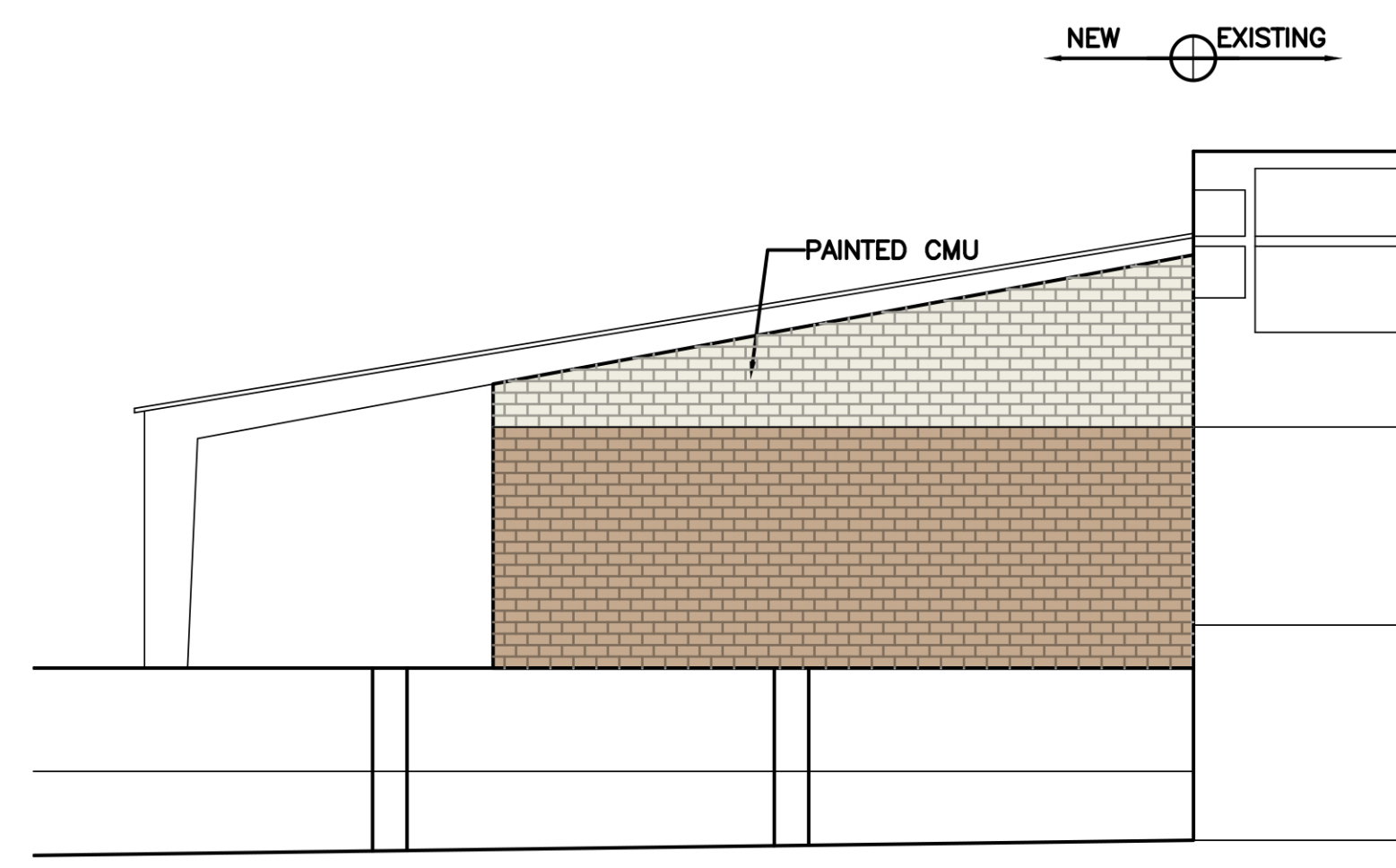
**TOOL/DIE ROOM
NORTH ELEVATION**

SCALE: 1" = 10'-0"



**TOOL/DIE ROOM
EAST ELEVATION**

SCALE: 1" = 10'-0"

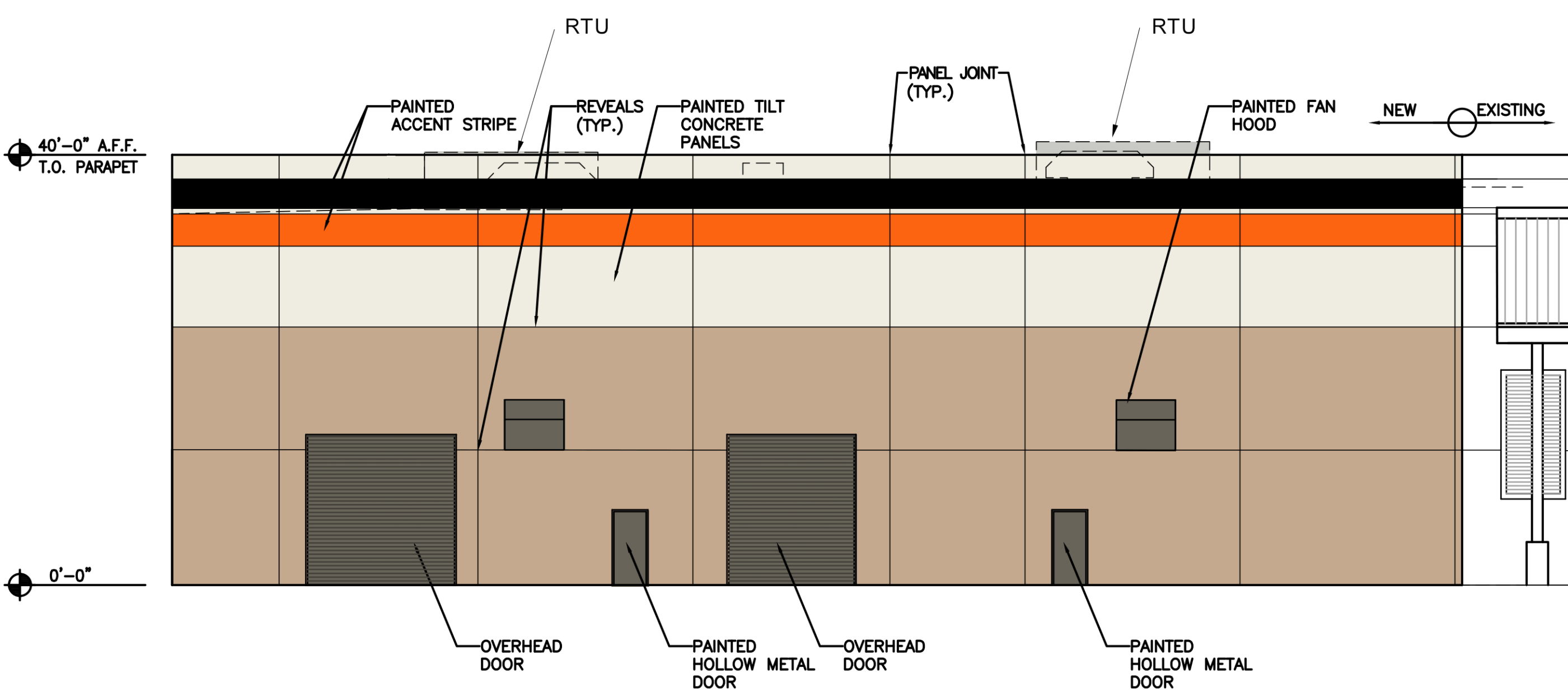


**TOOL/DIE ROOM
WEST ELEVATION**

SCALE: 1" = 10'-0"

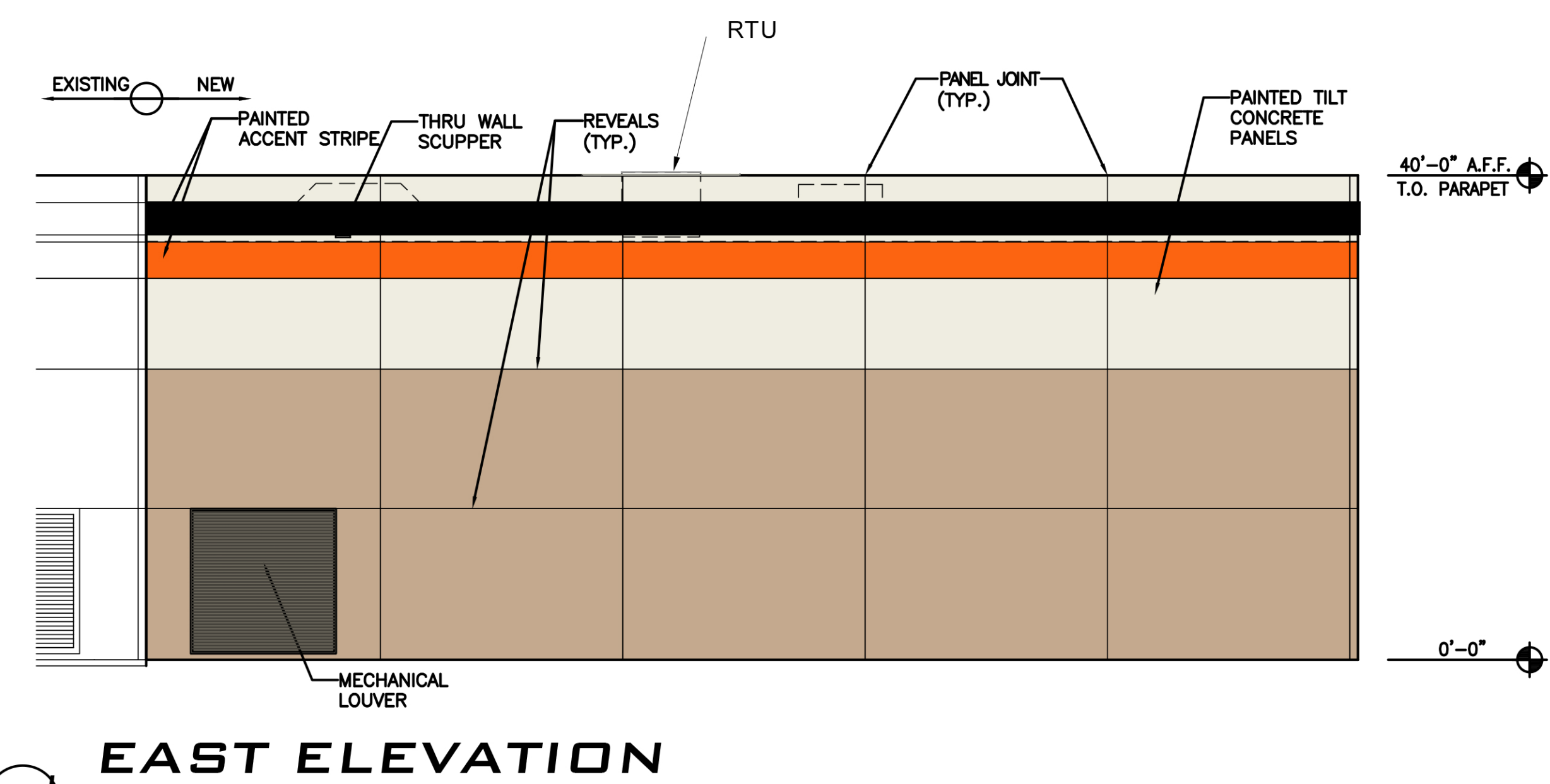
EXPANSION 'C'						
MATERIAL	NORTH	PERCENT	EAST	PERCENT	WEST	PERCENT
PAINTED CMU (COLOR 1)	1174.6 SF	91.4%	996.3 SF	81%	569.3 SF	69.1%
PAINTED CMU (COLOR 2)	110.5 SF	8.6%	233.8 SF	19%	254.2 SF	30.9%
TOTAL	1285.1 SF		1230.1 SF		823.5 SF	
OPENINGS	167.9 SF	11.6%	-	-	-	-
TOTAL	1453 SF		1230.1 SF		823.5 SF	

*NOTE: PAINT COLORS TO MATCH EXISTING



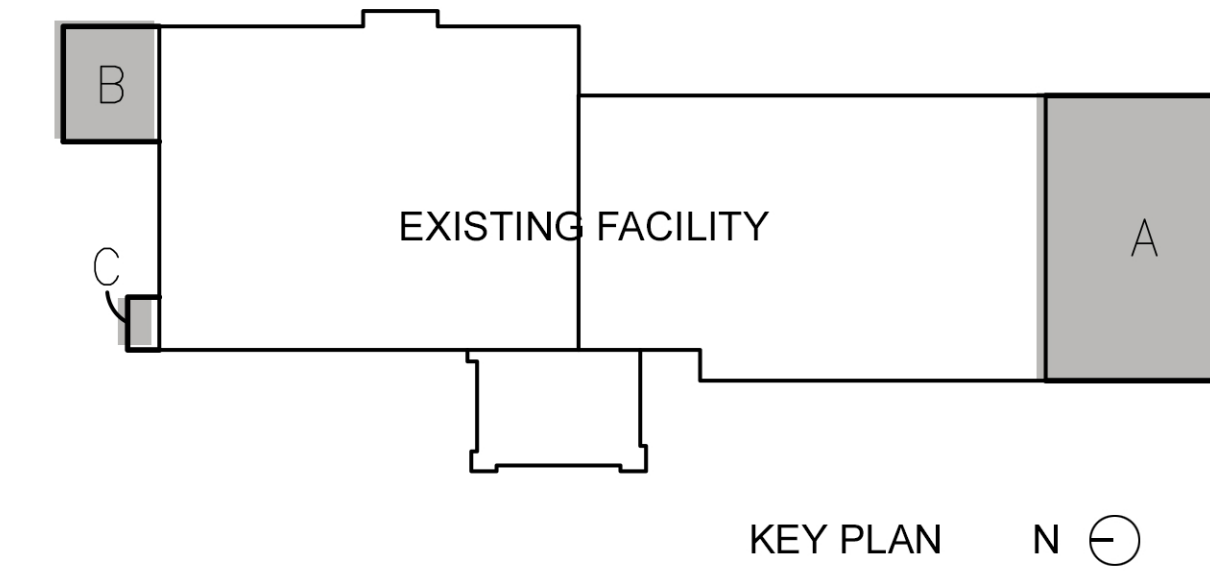
NORTH ELEVATION

SCALE: 1" = 10'-0"

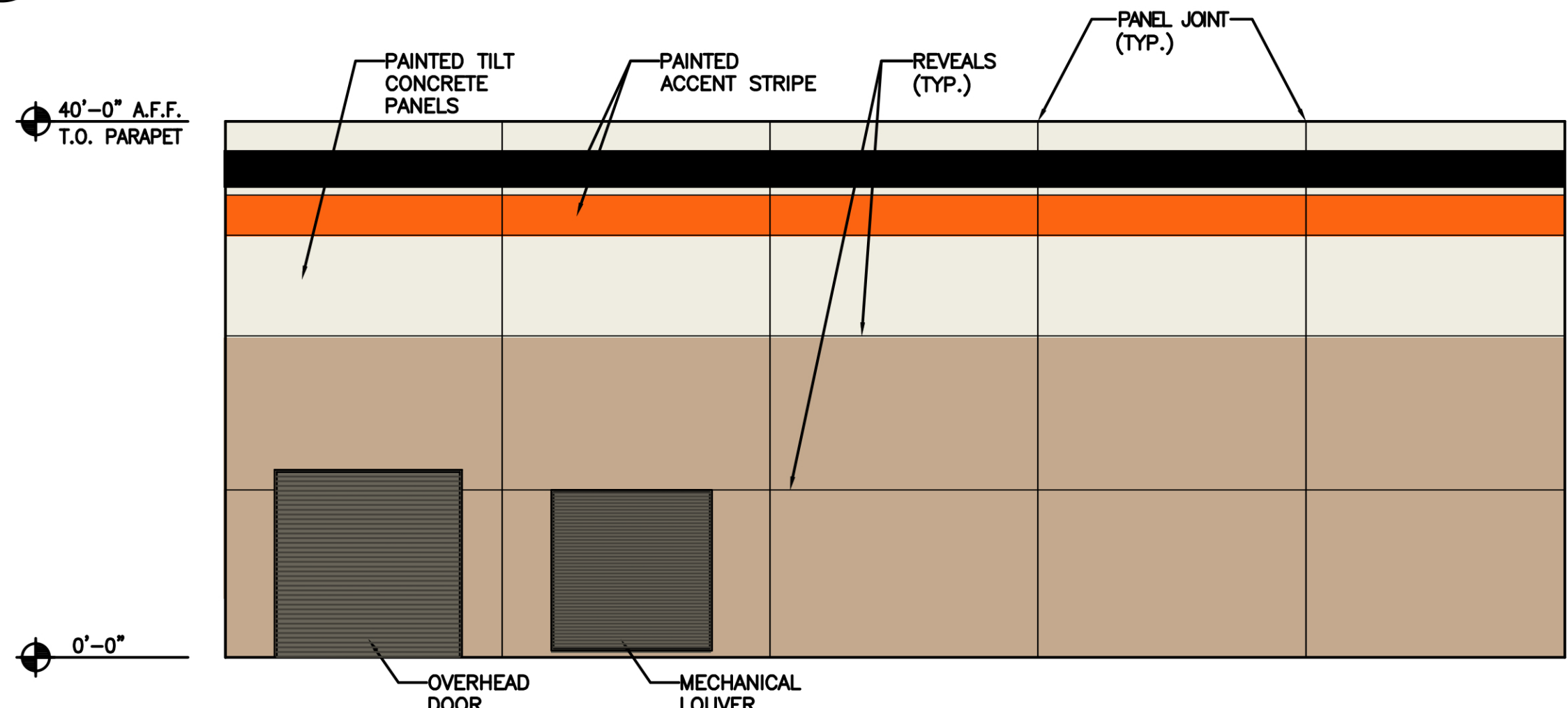


EAST ELEVATION

SCALE: 1" = 10'-0"



SIMPSON STRONG TIE PHASE 3 SITE PLAN CASE: 2016 - 252 SP	
OWNER	SIMPSON STRONG TIE 2221 COUNTRY LANE MCKINNEY, TEXAS 75069
ARCHITECT	ROUCH ARCHITECTS 1701 NORTH MARKET ST. #200 DALLAS, TEXAS 75202



WEST ELEVATION

SCALE: 1" = 10'-0"

EXPANSION 'B'						
MATERIAL	NORTH	PERCENT	EAST	PERCENT	WEST	PERCENT
PAINTED TILT PANEL (COLOR 1)	1240 SF	29.1%	1033.3 SF	26.8%	1033.3 SF	28.2%
PAINTED TILT PANEL (COLOR 2)	2338 SF	54.9%	2256 SF	58.5%	2060 SF	56.3%
PAINTED TILT PANEL (COLOR 3)	360 SF	8.5%	300 SF	7.8%	300 SF	8.2%
PAINTED TILT PANEL (COLOR 4)	319.9 SF	7.5%	266.7 SF	6.9%	266.7 SF	7.3%
TOTAL	4257.9 SF		3856 SF		3660 SF	
OPENINGS	462 SF	9.8%	144 SF	3.6%	340 SF	8.5%
TOTAL	4719.9 SF		4000 SF		4000 SF	

*NOTE: PAINT COLORS TO MATCH EXISTING

RECEIVED
By Planning Department at 8:43 am, Feb 14, 2017



ROUCH ARCHITECTS 2016 ©