

FOR REVIEW ONLY
NOT INTENDED FOR
BIDDING,
PERMIT, OR
CONSTRUCTION

Scott Alan Nelson
Registration No. TX 20208

JH Architects

JH Architects, Inc.
5910 North Central Expressway Suite 1200
Dallas, Texas 75206
972-404-1034
fax 972-404-1036

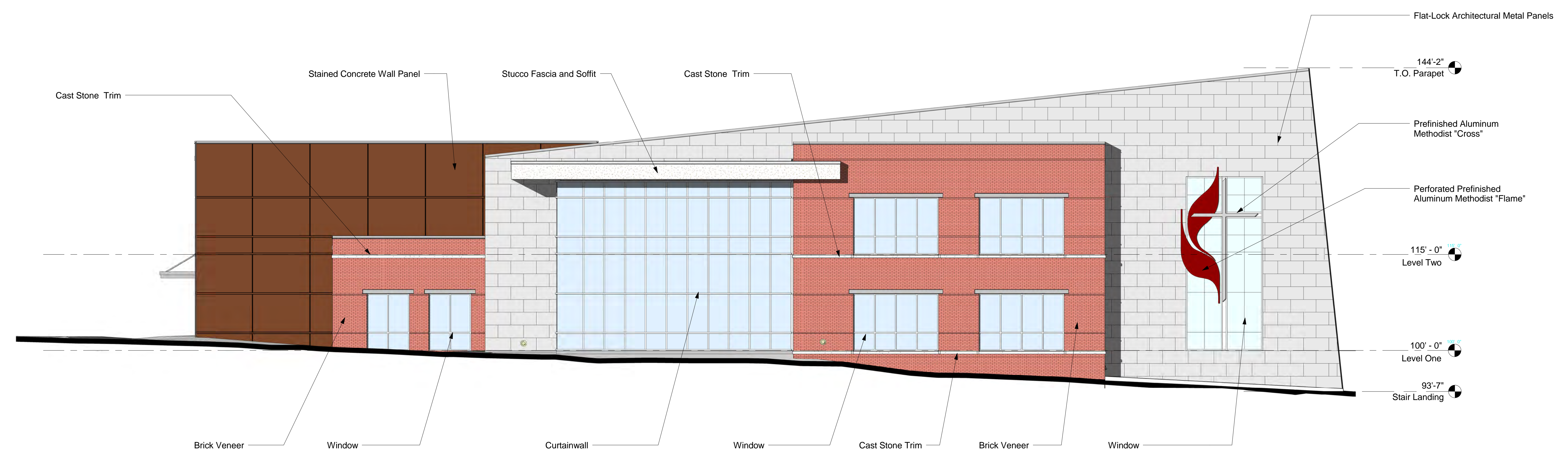
Youth Building
First United Methodist Church McKinney
102 West Lamar
McKinney, TX 75069

1008 03.12.2012

Zoning Request
Building Elevation

South Elevation 6,761 SF

Curtainwall	986 SF	(15%)
Window/Doors	899 SF	(13%)
Brick	1,582 SF	(23%)
Concrete	1,061 SF	(16%)
Metal Panels	2,087 SF	(31%)
Stucco	146 SF	(2%)



1 South Elevation (Lamar Street)
SCALE: 1/8" = 1'-0"

FOR REVIEW ONLY
NOT INTENDED FOR
BIDDING,
PERMIT, OR
CONSTRUCTION

Scott Alan Nelson
Registration No. TX 20208



HH Architects, Inc.
5910 North Central Expressway Suite 1200
Dallas, Texas 75206
972-404-1034
fax 972-404-1036

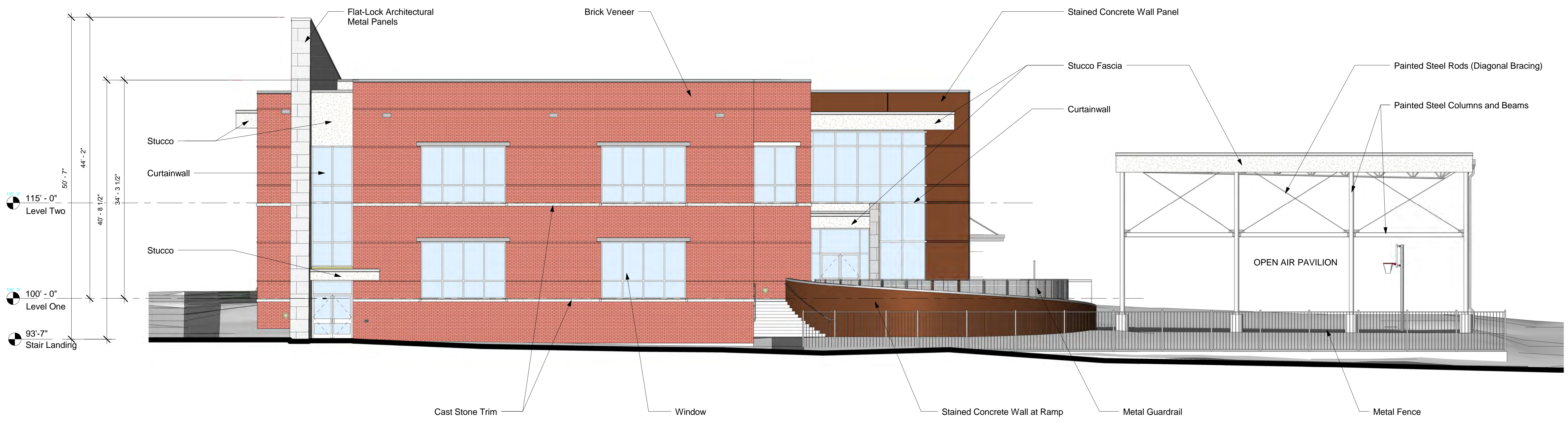
Youth Building
First United Methodist Church McKinney
102 West Lamar
McKinney, TX 75069

1008 03.12.2012

Zoning Request
Building Elevation

East Elevation 4,319 SF

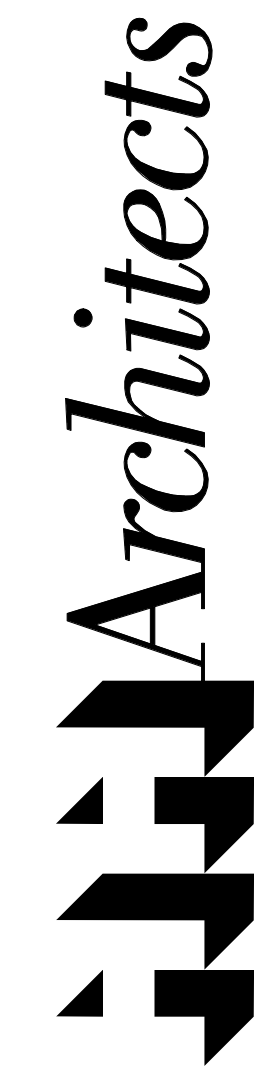
Curtainwall	600 SF	(14%)
Window/Doors	535 SF	(12%)
Brick	2,548 SF	(59%)
Concrete	275 SF	(6%)
Metal Panels	173 SF	(4%)
Stucco	188 SF	(5%)



1 East Elevation (Kentucky Street)
SCALE: 1/8" = 1'-0"

FOR REVIEW ONLY
NOT INTENDED FOR
BIDDING,
PERMIT, OR
CONSTRUCTION

Scott Alan Nelson
Registration No. TX 20208



HH Architects, Inc.
5910 North Central Expressway Suite 1200
Dallas, Texas 75206
972-404-1034
fax 972-404-1036

Youth Building
First United Methodist Church McKinney
102 West Lamar
McKinney, TX 75069

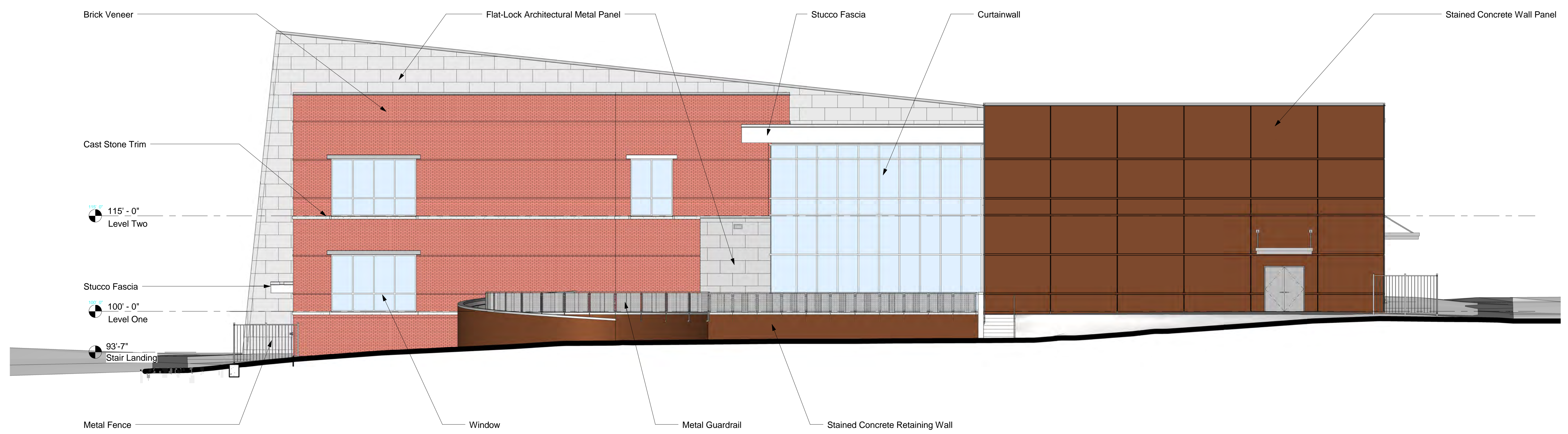
1008 03.12.2012

Zoning Request

Building Elevation

North Elevation 6,737 SF

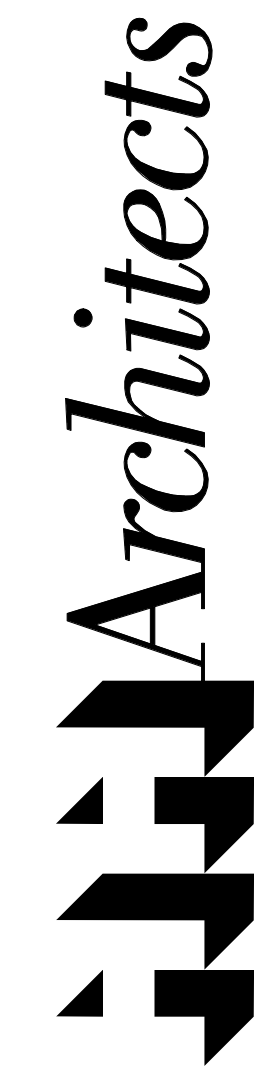
Curtainwall	886 SF	(13%)
Window/Doors	343 SF	(5%)
Brick	2,386 SF	(35%)
Concrete	2,016 SF	(30%)
Metal Panels	989 SF	(15%)
Stucco	117 SF	(2%)



1 North Elevation (Walker Street)
SCALE: 1/8" = 1'-0"

FOR REVIEW ONLY
NOT INTENDED FOR
BIDDING,
PERMIT, OR
CONSTRUCTION

Scott Alan Nelson
Registration No. TX 20208



HH Architects, Inc.
5910 North Central Expressway Suite 1200
Dallas, Texas 75206

972-404-1034
fax 972-404-1036

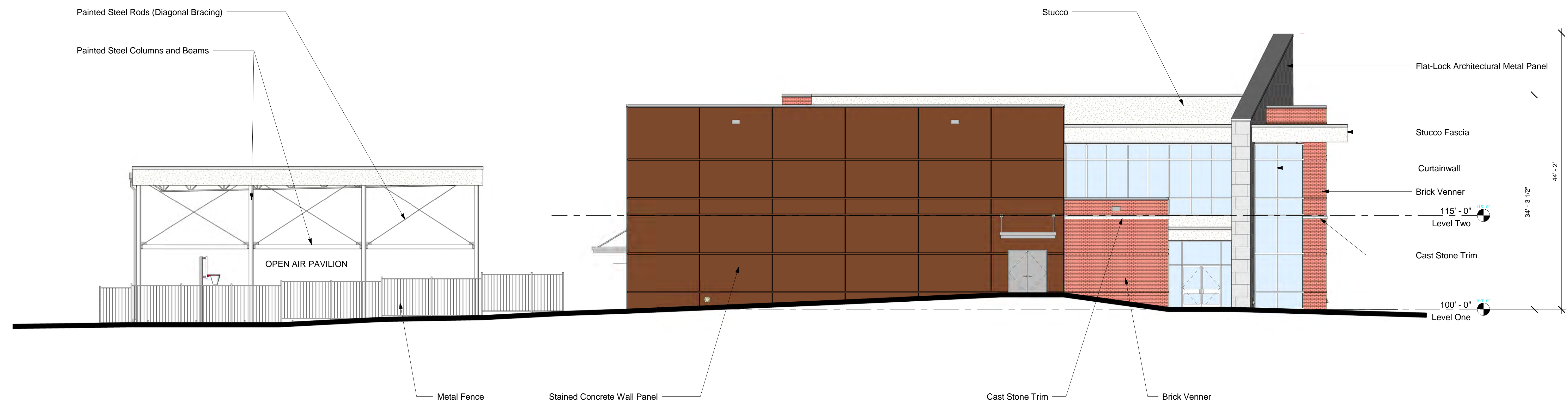
Youth Building
First United Methodist Church McKinney
102 West Lamar
McKinney, TX 75069

1008 03.12.2012

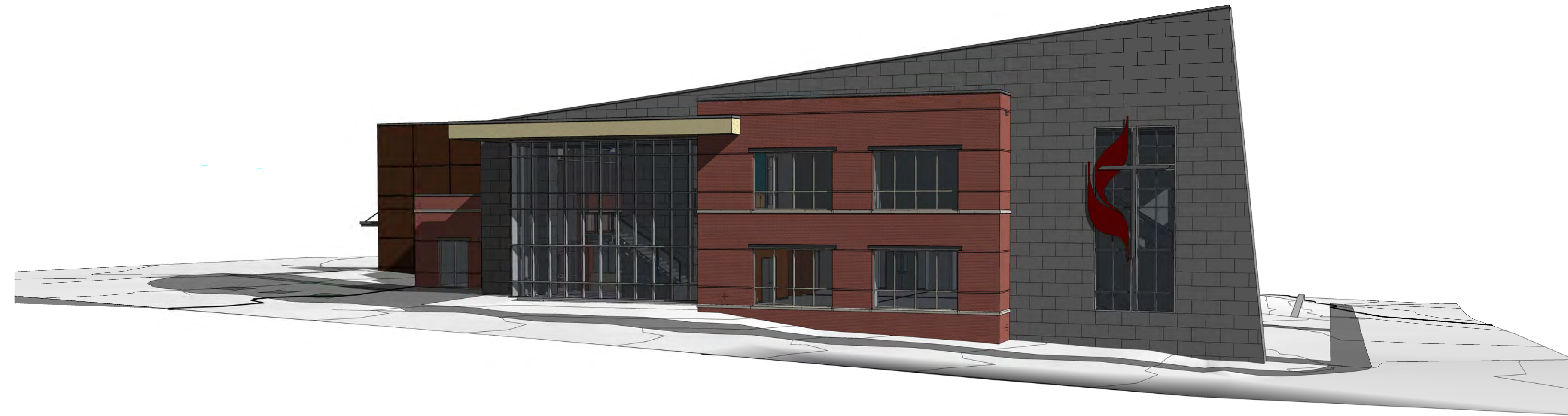
Zoning Request

Building Elevation

<u>West Elevation</u>		<u>3,692 SF</u>
Curtainwall	589 SF	(16%)
Window/Doors	45 SF	(1%)
Brick	415 SF	(11%)
Concrete	2,155 SF	(58%)
Metal Panels	132 SF	(4%)
Stucco	356 SF	(10%)



1 West Elevation (Wood Street)
SCALE: 1/8" = 1'-0"



View From South

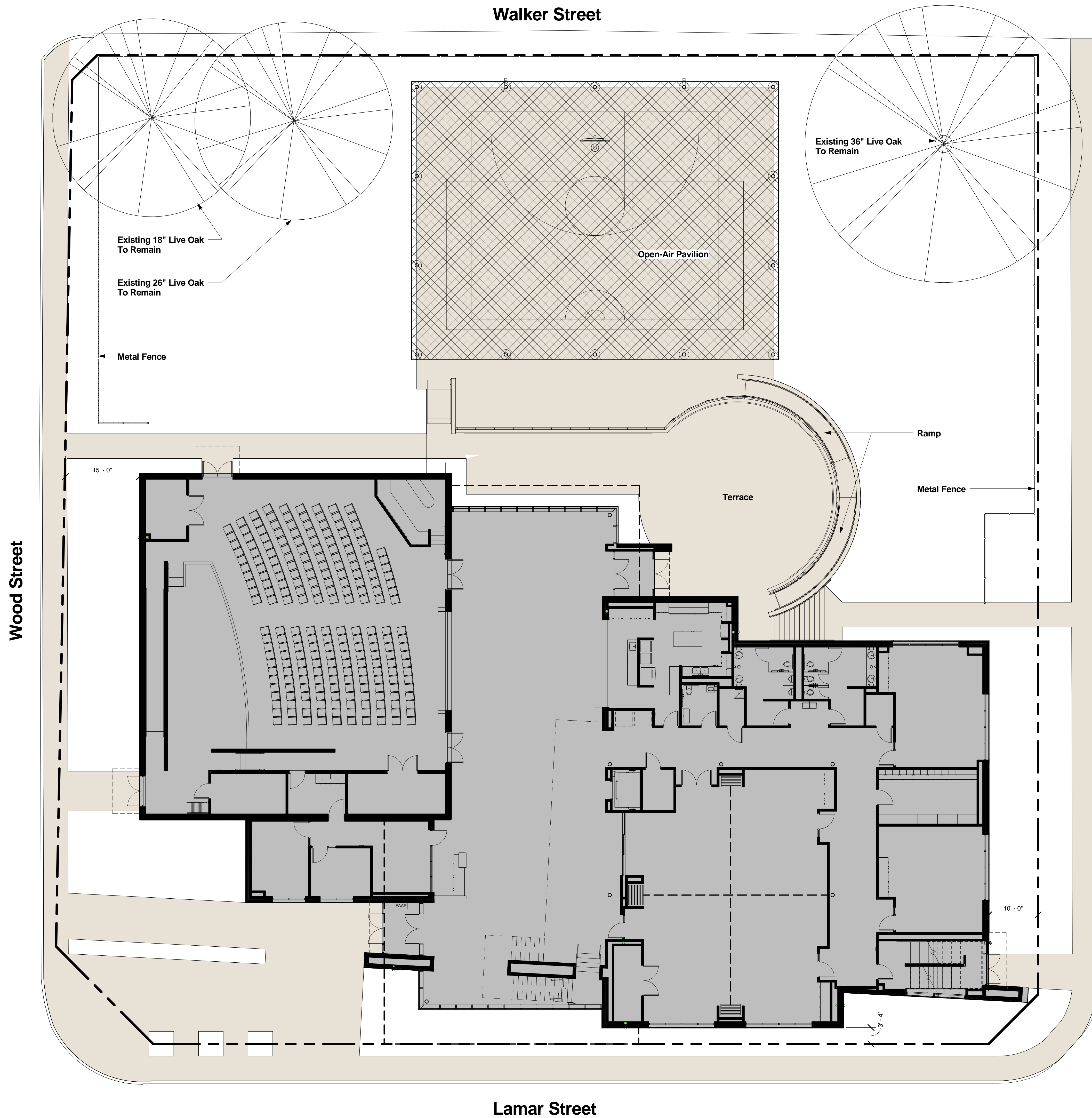


View From Southwest



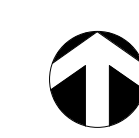
View From Northeast

Note: For representational purposes only.



Level 1 - 14,742 S.F.
 Level 2 - 6,445 S.F.
Total - 21,187 S.F.

Pavilion - 4,164 S.F.
 (Open Air)

1 Site Plan
 SCALE: 1" = 10'-0" 

FOR REVIEW ONLY
 NOT INTENDED FOR
 BIDDING,
 PERMIT, OR
 CONSTRUCTION

Scott Alan Nelson
 Registration No. TX 20208

JH Architects

JH Architects, Inc.
 5910 North Central Expressway Suite 1200
 Dallas, Texas 75206
 972-404-1034
 fax 972-404-1036

Youth Building
First United Methodist Church McKinney
 102 West Lamar
 McKinney, TX 75069

1008 03.12.2012

Zoning Request
 Site Plan