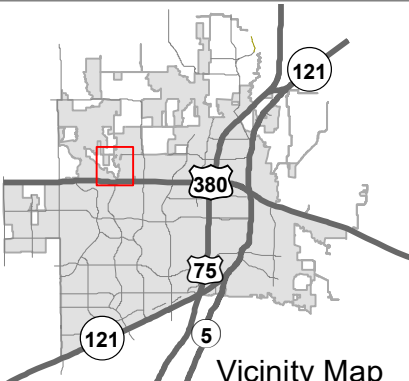


KNUTH KENNETH G & MARSHA J  
 SAI WILMETH PROPERTIES LLC  
 MCKINNEY CITY OF

BASEBALL NATION LLC  
 W/J WILMETH RIDGE LP  
 STIDHAM JAMES H & LINDA

CHEN FELIX Y &  
 JEN TEXAS 14 LLC

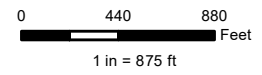
CROW-BILLINGSLEY MCKINNEY 380 LTD  
 CROW-BILLINGSLEY MCKINNEY 380 LTD



Vicinity Map

# Ridge Road ST1617 Eminent Domain

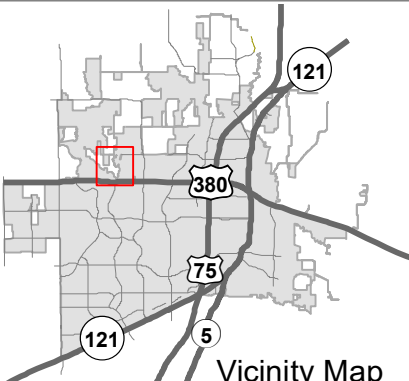
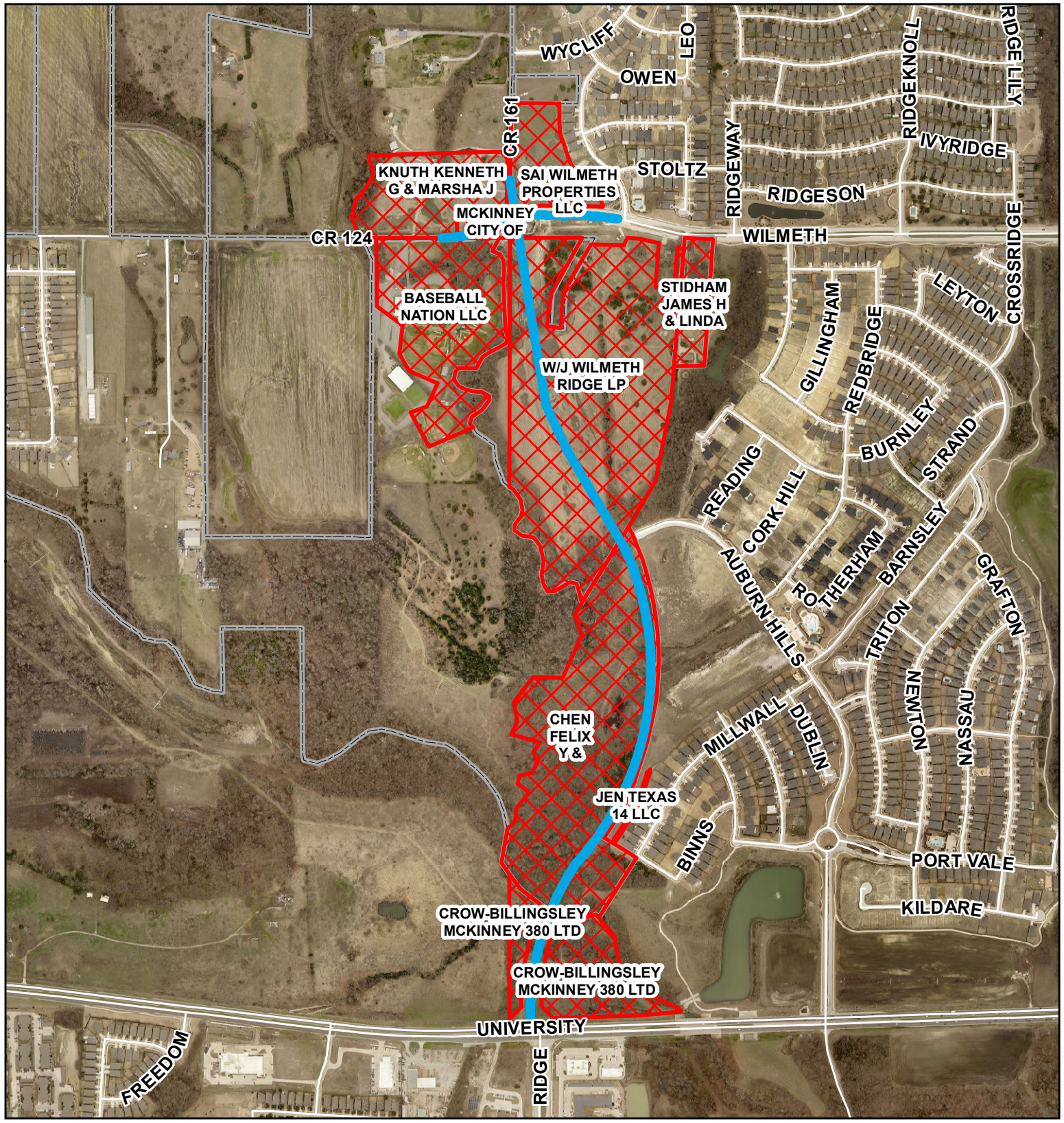
Source: City of McKinney GIS  
 Date: 5/18/2020



DISCLAIMER: This map and information contained in it were developed exclusively for use by the City of McKinney. Any use or reliance on this map by anyone else is at that party's risk and without liability to the City of McKinney, its officials or employees for any discrepancies, errors, or variances which may exist.

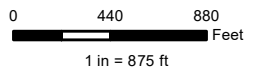


Document Path: Y:\GIS\GISWork\Carmonat\Engineering\Agenda Items\2020\0518\_ST1617.mxd



# Ridge Road ST1617 Eminent Domain

Source: City of McKinney GIS  
Date: 5/18/2020



DISCLAIMER: This map and information contained in it were developed exclusively for use by the City of McKinney. Any use or reliance on this map by anyone else is at that party's risk and without liability to the City of McKinney, its officials or employees for any discrepancies, errors, or variances which may exist.

