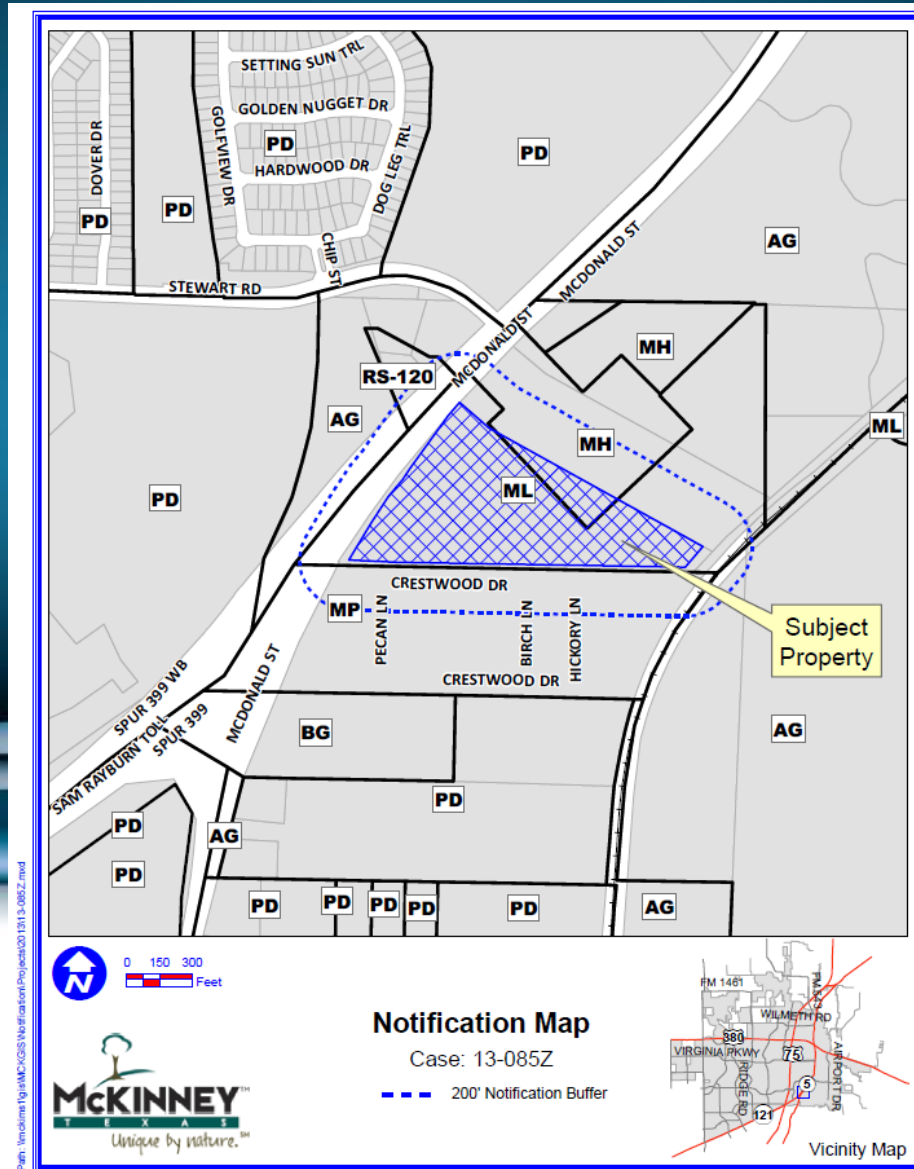


Case No. 13-085Z

Located Approximately 1,700 Square Feet North of Plateau Drive and on the East Side of McDonald Street (State Highway 5)



Location Map



Path: \\mckinney\GIS\Notification\Projects\2013\13-085Z.mxd

DISCLAIMER: This map and information contained in it were developed exclusively for use by the City of McKinney. Any use or reliance on this map by anyone else is at that party's risk and without liability to the City of McKinney, its officials or employees for any discrepancies, errors, or variances which may exist.

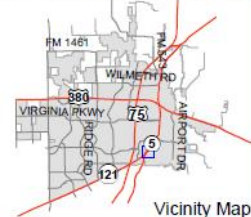
Aerial Exhibit



Notification Map

Case: 13-085Z

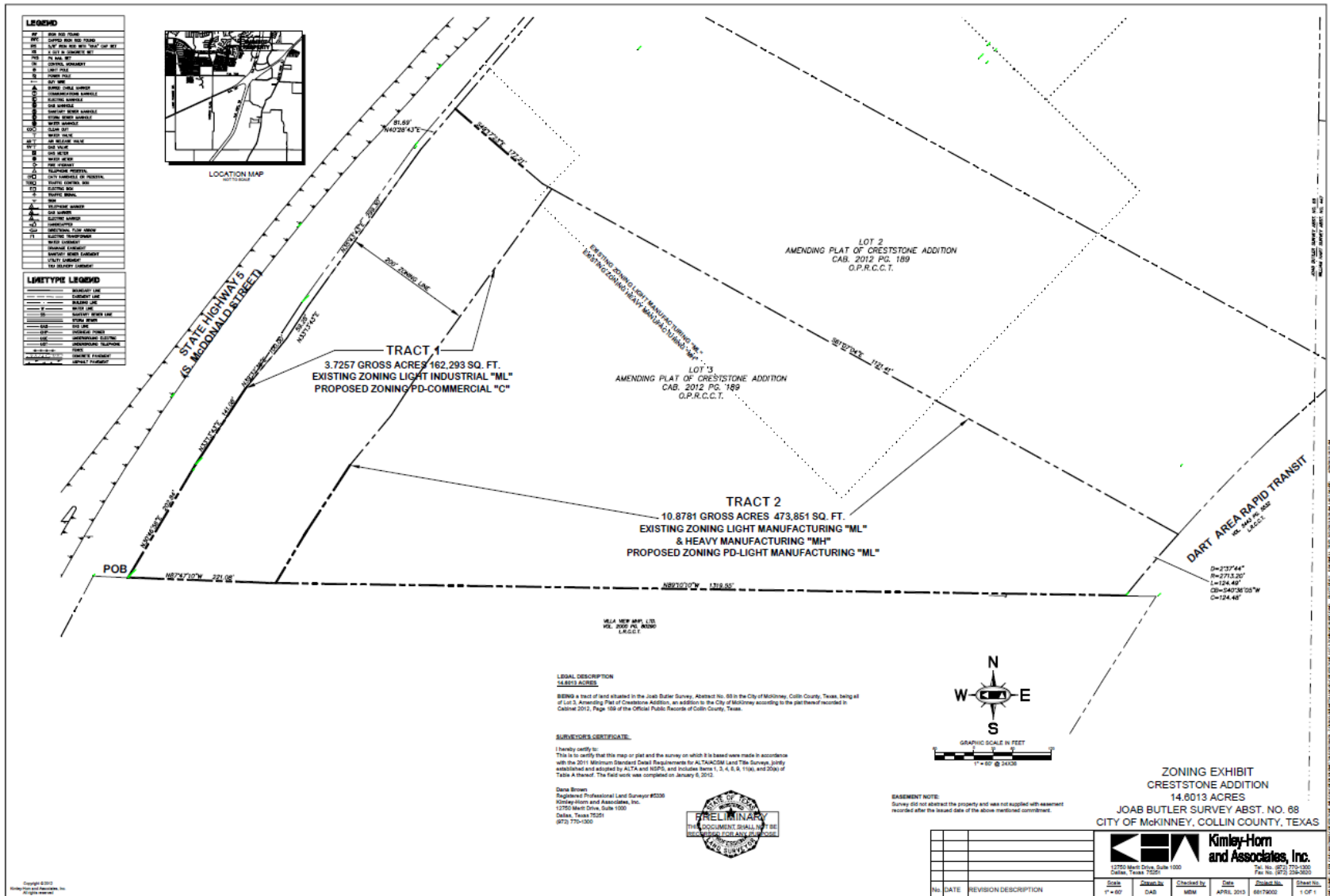
--- 200' Notification Buffer



Path: T:\cincin\13\13085Z\Map\Aerial\Aerial\131313_085Z.mxd

DISCLAIMER: This map and information contained in it were developed exclusively for use by the City of McKinney. Any use or reliance on this map by anyone else is at that party's risk and without liability to the City of McKinney, its officials or employees for any discrepancies, errors, or variances which may exist.

Proposed Zoning Exhibit



STAFF RECOMMENDATION:

Staff recommends approval of the rezoning request.

