

SITE NUMBER: 04742
 BASE MODEL: 3076
 ASSET TYPE: FRANCHISE
 CLASSIFICATION: REFRESH
 OWNER: RON REINKE
 BASE VERSION: 2016 JAN.
 UPGRADE CLASSIFICATION: N/A
 PROJECT YEAR: 2017
 FURNITURE PACKAGE: 2016
 DESIGN BULLETINS: THRU DB 2015-02

linear!
 the architecture of Kenery Brundige and Young
 8951 Cypress Waters Blvd., Suite 130
 Dallas, TX 75019
 Phone: 972.929.9226
 Fax: 972.929.9061

PROJECT TYPE: IMAGE REFRESH

Wendy's
 #04742
 1714 W. UNIVERSITY DRIVE
 MCKINNEY, TX 75069

REV.	DATE	DESCRIPTION

ISSUE DATE: 02/13/17
 PROJECT NUMBER: 16.199
 DRAWN BY: NHM
 CHECKED BY: IOR

SHEET NAME
 EXTERIOR ELEVATIONS

SHEET NUMBER
A2.1

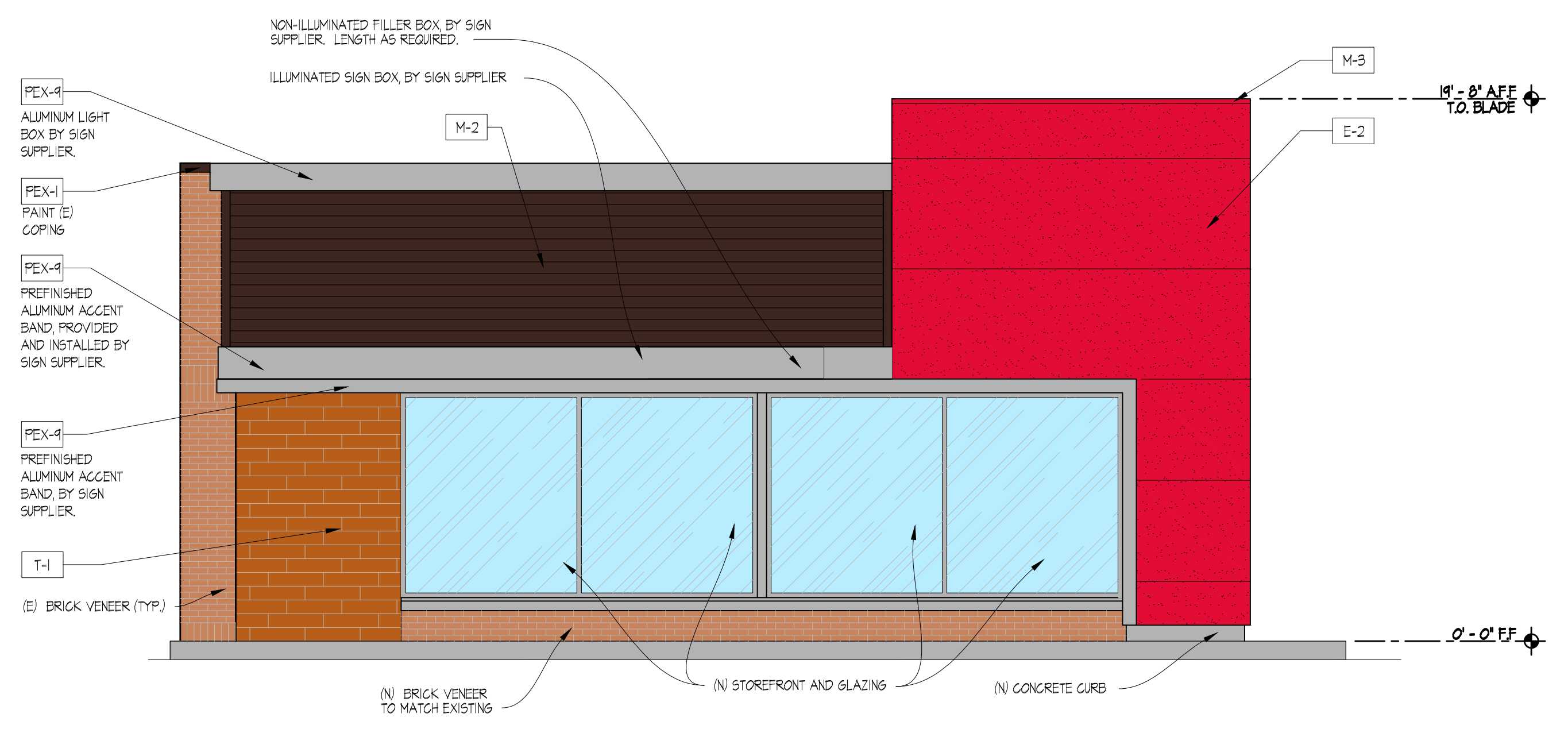
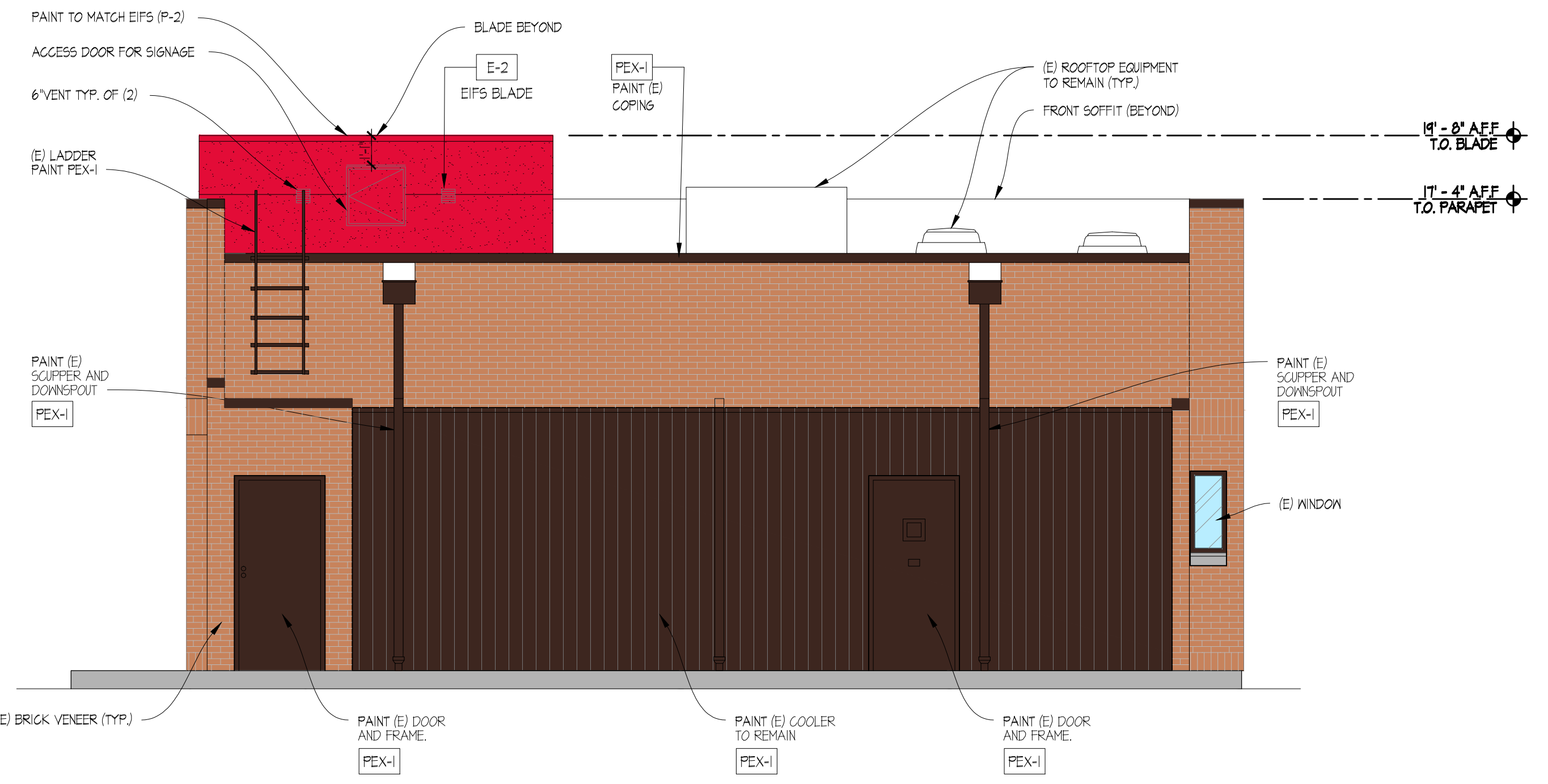
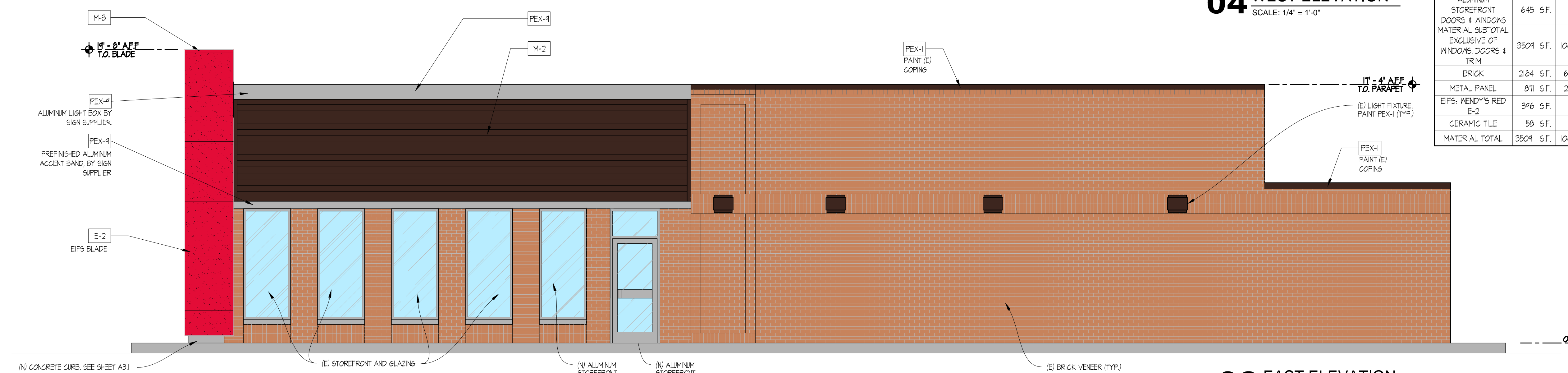
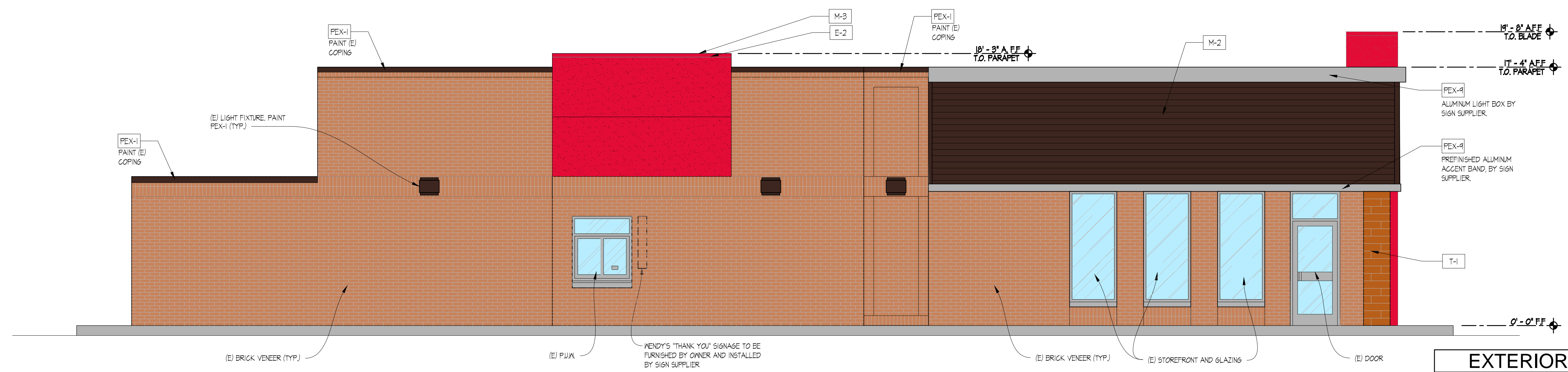
EXTERIOR FINISHES LEGEND

NOTE: REFER TO SHEET A6.1 FOR SPECIFICATIONS OF EXTERIOR MATERIALS AND FINISHES.

E-1	EXTERIOR INSULATED FINISH SYSTEM (COLOR: WENDY'S GRAY)
E-2	EXTERIOR INSULATED FINISH SYSTEM (COLOR: WENDY'S RED)
M-2	CORRUGATED METAL PANEL (COLOR: DARK BRONZE)
M-3	PARAPET CAP (COLOR: BEIGE, MATCH STONE)
PEX-1	PAINT (COLOR: WENDY'S DARK BRONZE)
PEX-4	CLEAR ANODIZED ALUMINUM FINISH
T-1	EXTERIOR TILE (COLOR: WENDY'S WOODGRAIN)

EXTERIOR MATERIAL CALCULATIONS

MATERIALS	TOTAL	NORTH FACADE	SOUTH FACADE	EAST FACADE	WEST FACADE
TOTAL AREA	4154 S.F.	651 S.F.	700 S.F.	1396 S.F.	1401 S.F.
ALUMINUM STOREFRONT DOORS & WINDOWS MATERIAL SUBTOTAL EXCLUSIVE OF WINDOWS, DOORS & TRIM	645 S.F.	52 S.F.	271 S.F.	198 S.F.	118 S.F.
BRICK	3509 S.F. 100%	605 S.F. 100%	423 S.F. 100%	1198 S.F. 100%	1283 S.F. 100%
METAL PANEL	2184 S.F. 62%	288 S.F. 47%	71 S.F. 17%	930 S.F. 78%	900 S.F. 70%
EIFS: WENDY'S RED E-2	871 S.F. 25%	267 S.F. 44%	132 S.F. 31%	206 S.F. 17%	266 S.F. 21%
CERAMIC TILE	396 S.F. 11%	55 S.F. 9%	166 S.F. 39%	62 S.F. 5%	113 S.F. 9%
MATERIAL TOTAL	58 S.F. 2%	0 S.F. 0%	54 S.F. 13%	0 S.F. 0%	4 S.F. 0%
MATERIAL TOTAL	3509 S.F. 100%	605 S.F. 100%	423 S.F. 100%	1198 S.F. 100%	1283 S.F. 100%



RECEIVED
 By Planning Department at 1:43 pm, May 26, 2017