
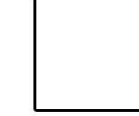






MATERIAL KEY

	MASONRY TYPE 1 "DARK RED BRICK"		FIBER CEMENT PANEL
	MASONRY TYPE 2 "MEDIUM BROWN BRICK"		FIBER CEMENT PLANK
	MASONRY TYPE 3 "LIGHT CREAM BRICK"		STUCCO



BUILDING B - EAST				
TOTAL S.F.	MASONRY		OTHER MATERIALS	
		BRICK	1,934 SF	STUCCO
			FIBER CEMENT	855 SF
11,613 SF		9,833		1,780 SF
		85%		15%

2 BUILDING B - EAST ELEVATION

Scale: 1/16" = 1'-0"

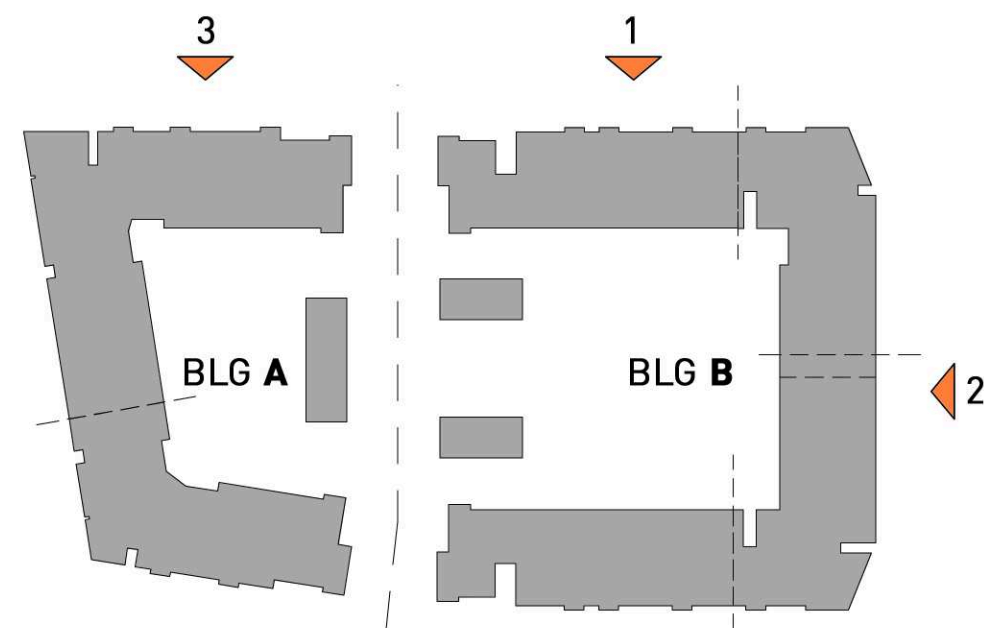


1 BUILDING B - NORTH ELEVATION

Scale: 1/16" = 1'-0"

3 BUILDING A - NORTH ELEVATION







Scale: 1/16" = 1'-0"



BUILDING B - NORTH				
TOTAL S.F.	MASONRY		OTHER MATERIALS	
		BRICK	6,116 SF	STUCCO
			FIBER CEMENT	491 SF
8,099 SF		7,014 SF		1,085 SF
		87%		13%

BUILDING A - NORTH				
TOTAL S.F.	MASONRY		OTHER MATERIALS	
		BRICK	6,116 SF	STUCCO
			FIBER CEMENT	748 SF
7,344 SF		6,116 SF		1,228 SF
		83%		17%

MATERIAL KEY

	MASONRY TYPE 1 "DARK RED BRICK"		FIBER CEMENT PANEL
	MASONRY TYPE 2 "MEDIUM BROWN BRICK"		FIBER CEMENT PLANK
	MASONRY TYPE 3 "LIGHT CREAM BRICK"		STUCCO



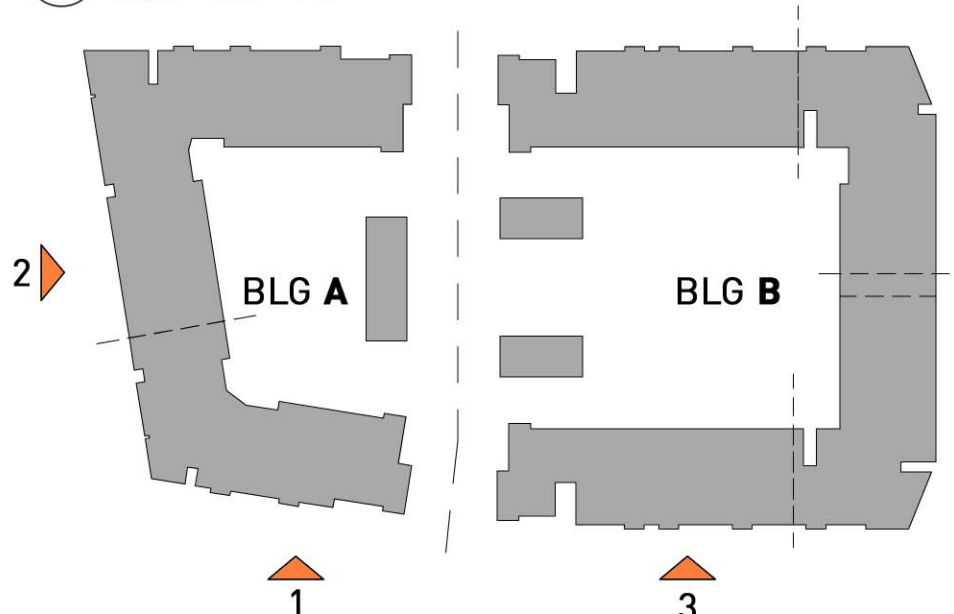
BUILDING A - WEST				
TOTAL S.F.	MASONRY		OTHER MATERIALS	
	BRICK	6,630 SF	STUCCO	214 SF
			FIBER CEMENT	960 SF
7,804 SF		6,630 SF		1,228 SF
		85%		15%

2 WEST ELEVATION
Scale: 1/16" = 1'-0"



1 BUILDING A - SOUTH ELEVATION
Scale: 1/16" = 1'-0"

3 BUILDING B - SOUTH ELEVATION
Scale: 1/16" = 1'-0"



BUILDING A - SOUTH				
TOTAL S.F.	MASONRY		OTHER MATERIALS	
	BRICK	6,630 SF	STUCCO	427 SF
			FIBER CEMENT	367 SF
5,608 SF		4,814 SF		794 SF
		86%		14%

BUILDING B - SOUTH				
TOTAL S.F.	MASONRY		OTHER MATERIALS	
	BRICK	6,116 SF	STUCCO	808 SF
			FIBER CEMENT	470 SF
8,182 SF		6,904 SF		1,085 SF
		84%		16%

BUILDING B - NORTH COURTYARD				
TOTAL S.F.	MASONRY		OTHER MATERIALS	
		BRICK	2,198 SF	STUCCO
			FIBER CEMENT	102 SF
6,277 SF		2,198 SF		4,079 SF
		35%		65%

BUILDING A - NORTH COURTYARD				
TOTAL S.F.	MASONRY		OTHER MATERIALS	
		BRICK	1,475 SF	STUCCO
			FIBER CEMENT	105 SF
3,364 SF		1,475 SF		1,889 SF
		44%		66%

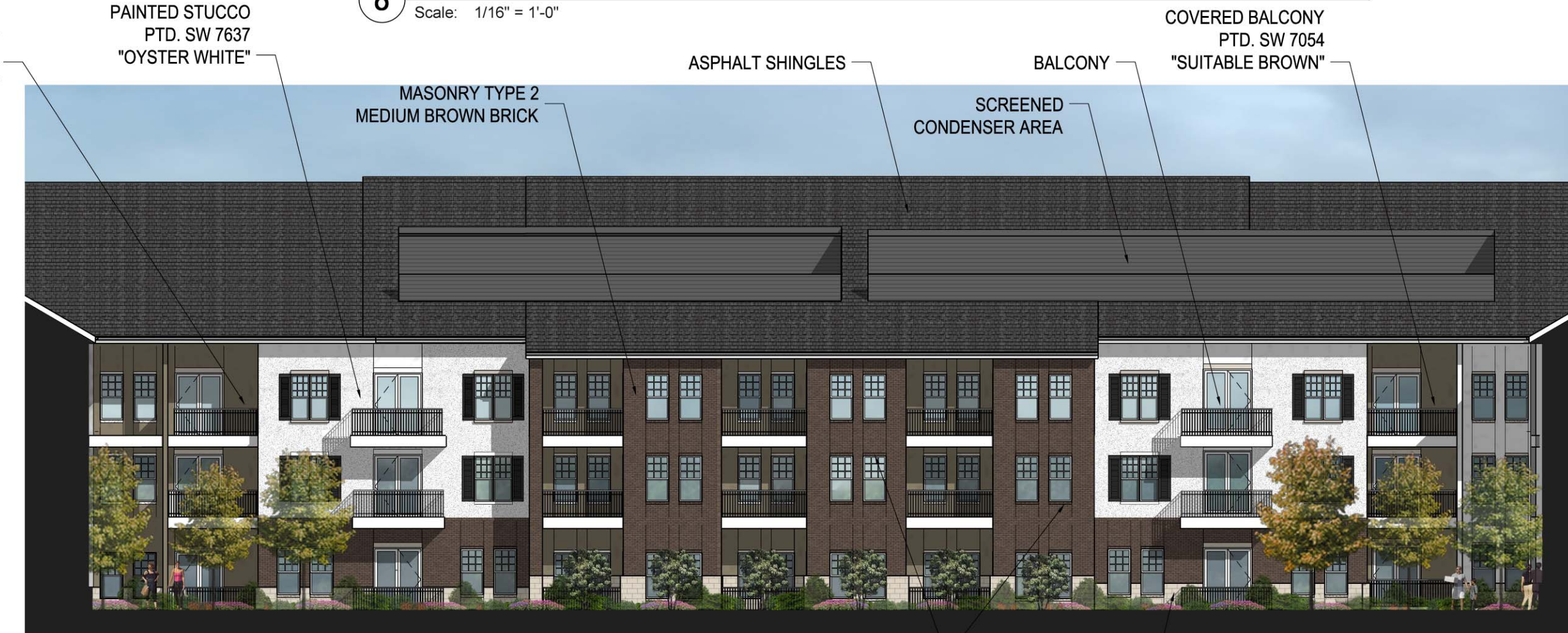


4 BUILDING B - NORTH COURTYARD ELEVATION

6 BUILDING A - NORTH COURTYARD ELEVATION



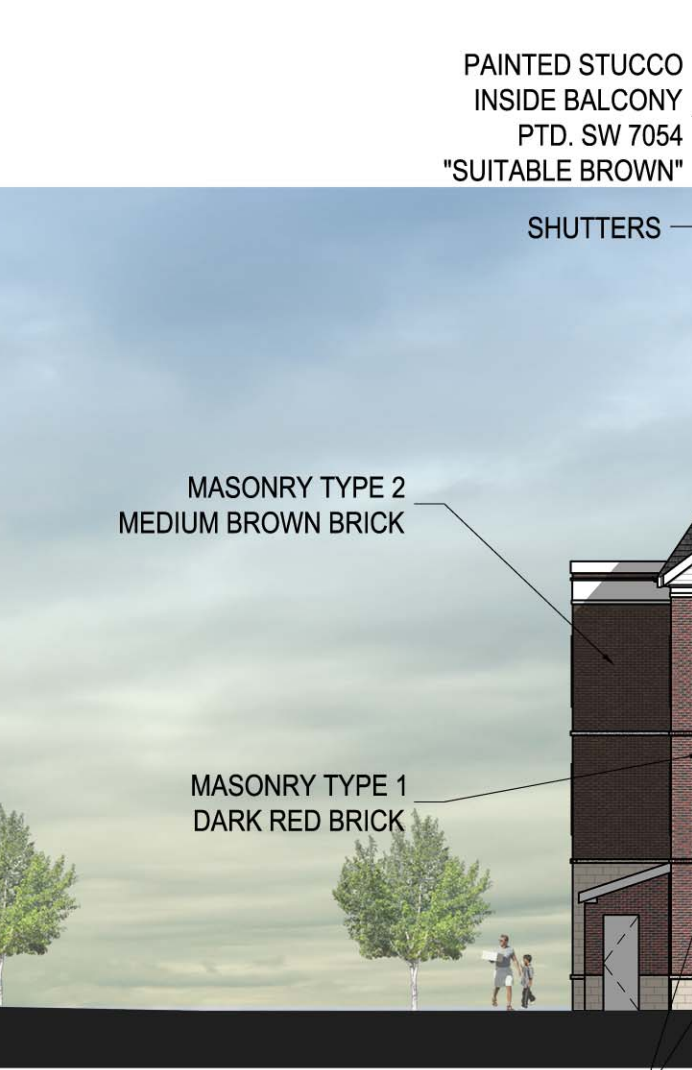
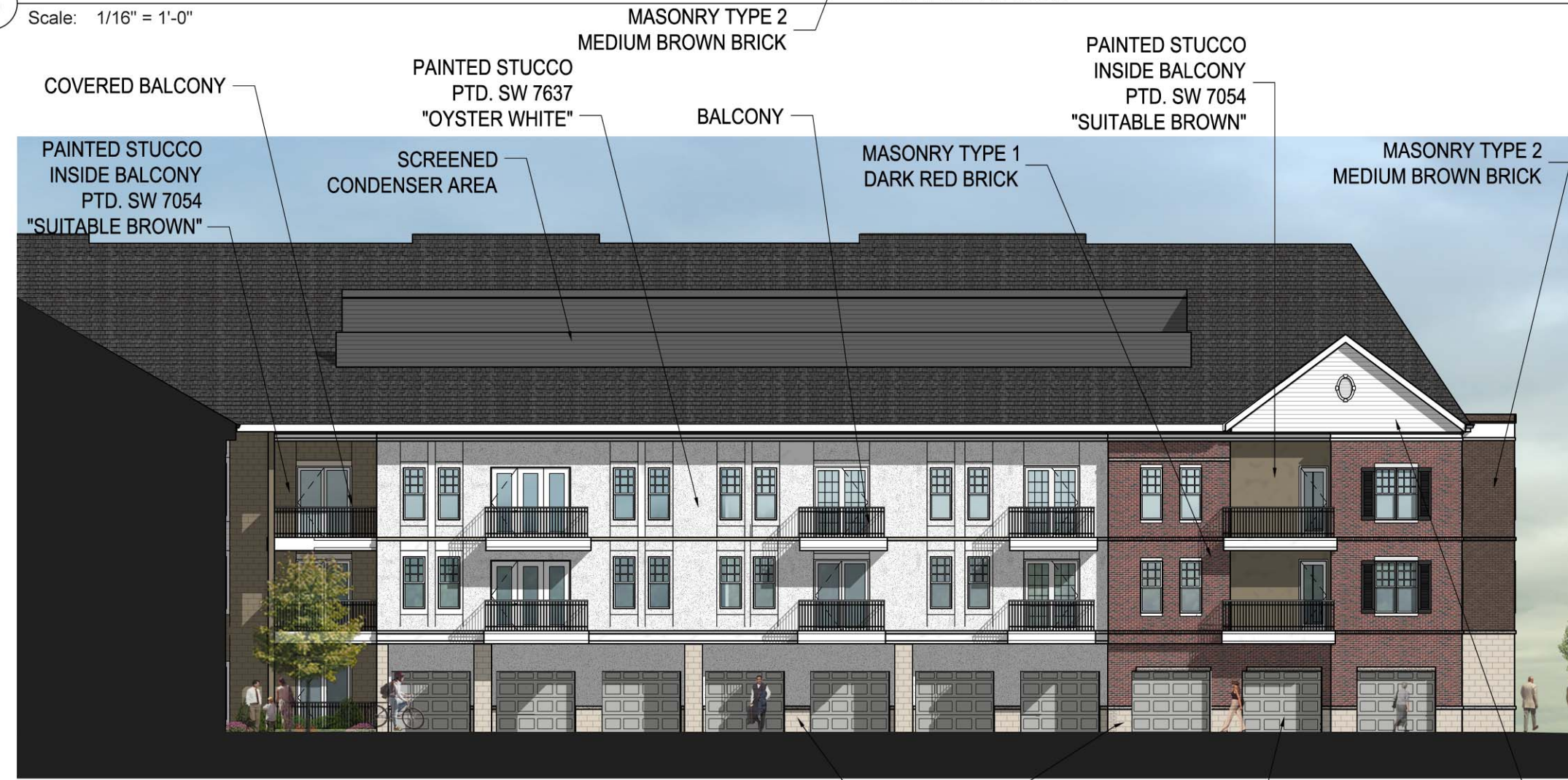
BUILDING A - WEST COURTYARD				
TOTAL S.F.	MASONRY		OTHER MATERIALS	
		BRICK		1,282 SF
			STUCCO	2,385 SF
3,667 SF		1,282 SF		2,385 SF
		35%		65%



BUILDING B - EAST COURTYARD				
TOTAL S.F.	MASONRY		OTHER MATERIALS	
		BRICK		2,103 SF
			STUCCO	1,792 SF
3,895 SF		2,103 SF		1,792 SF
		54%		46%

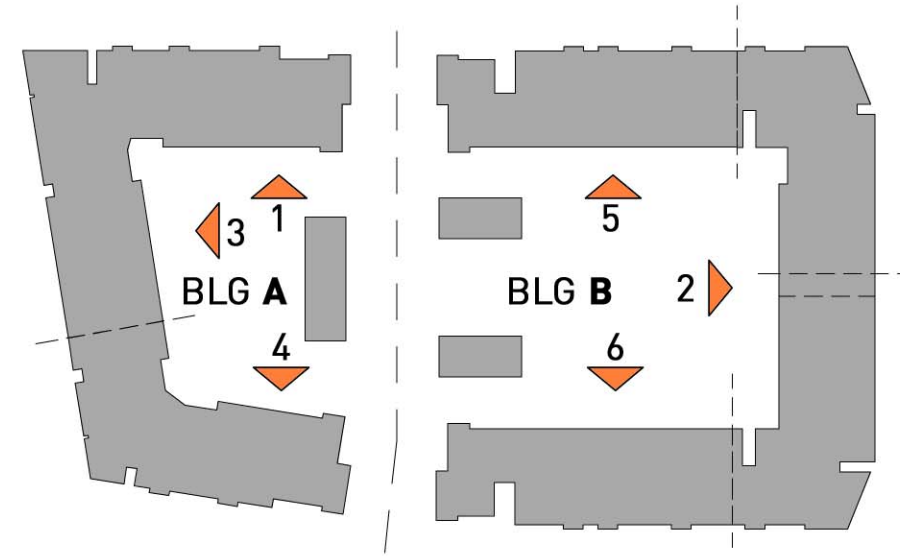
3 BUILDING A - WEST COURTYARD ELEVATION

2 BUILDING B - EAST COURTYARD ELEVATION



1 BUILDING A - SOUTH COURTYARD ELEVATION

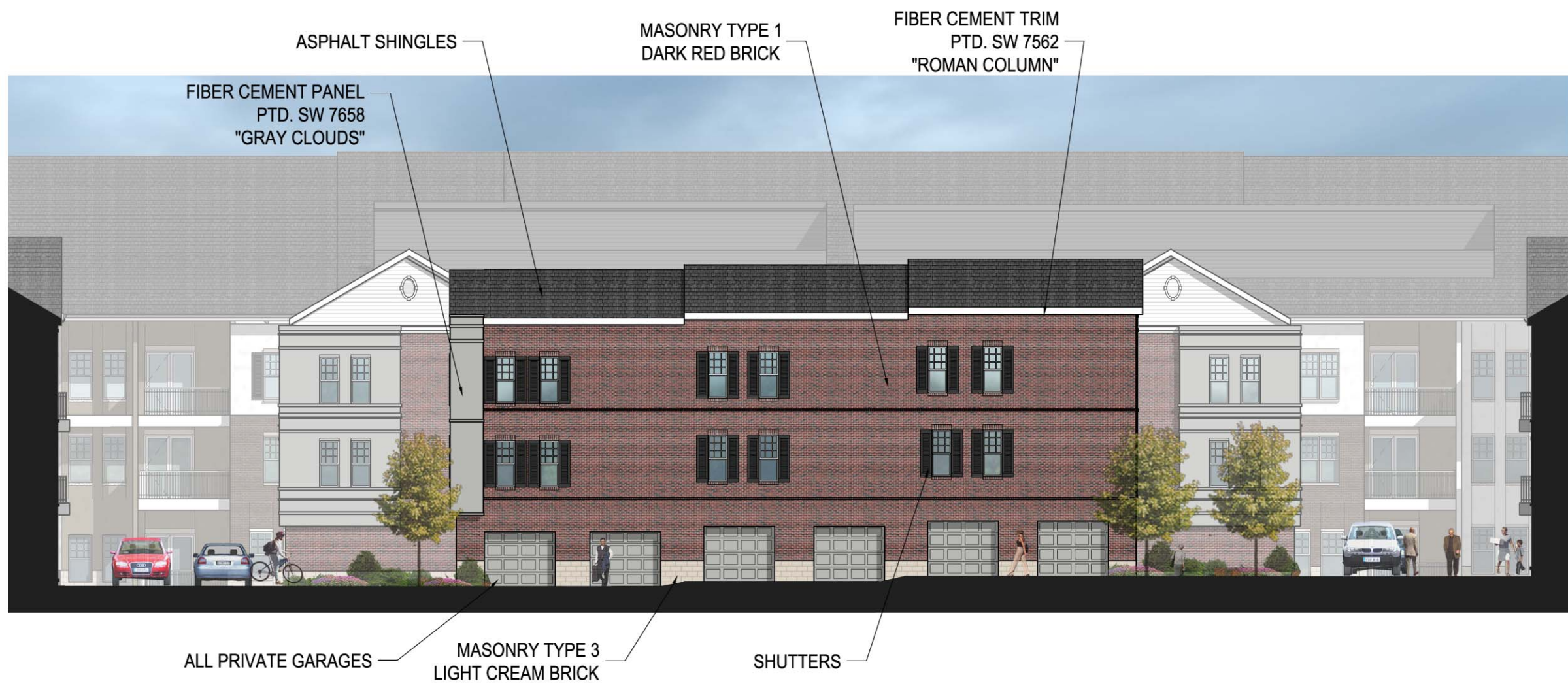
5 BUILDING B - SOUTH COURTYARD ELEVATION



BUILDING A - SOUTH COURTYARD				
TOTAL S.F.	MASONRY		OTHER MATERIALS	
		BRICK	1,241 SF	STUCCO
			FIBER CEMENT	105 SF
2,792 SF		1,342 SF		1,450 SF
		48%		52%

MATERIAL KEY			
	MASONRY TYPE 1 "DARK RED BRICK"		FIBER CEMENT PANEL
	MASONRY TYPE 2 "MEDIUM BROWN BRICK"		FIBER CEMENT PLANK
	MASONRY TYPE 3 "LIGHT CREAM BRICK"		STUCCO

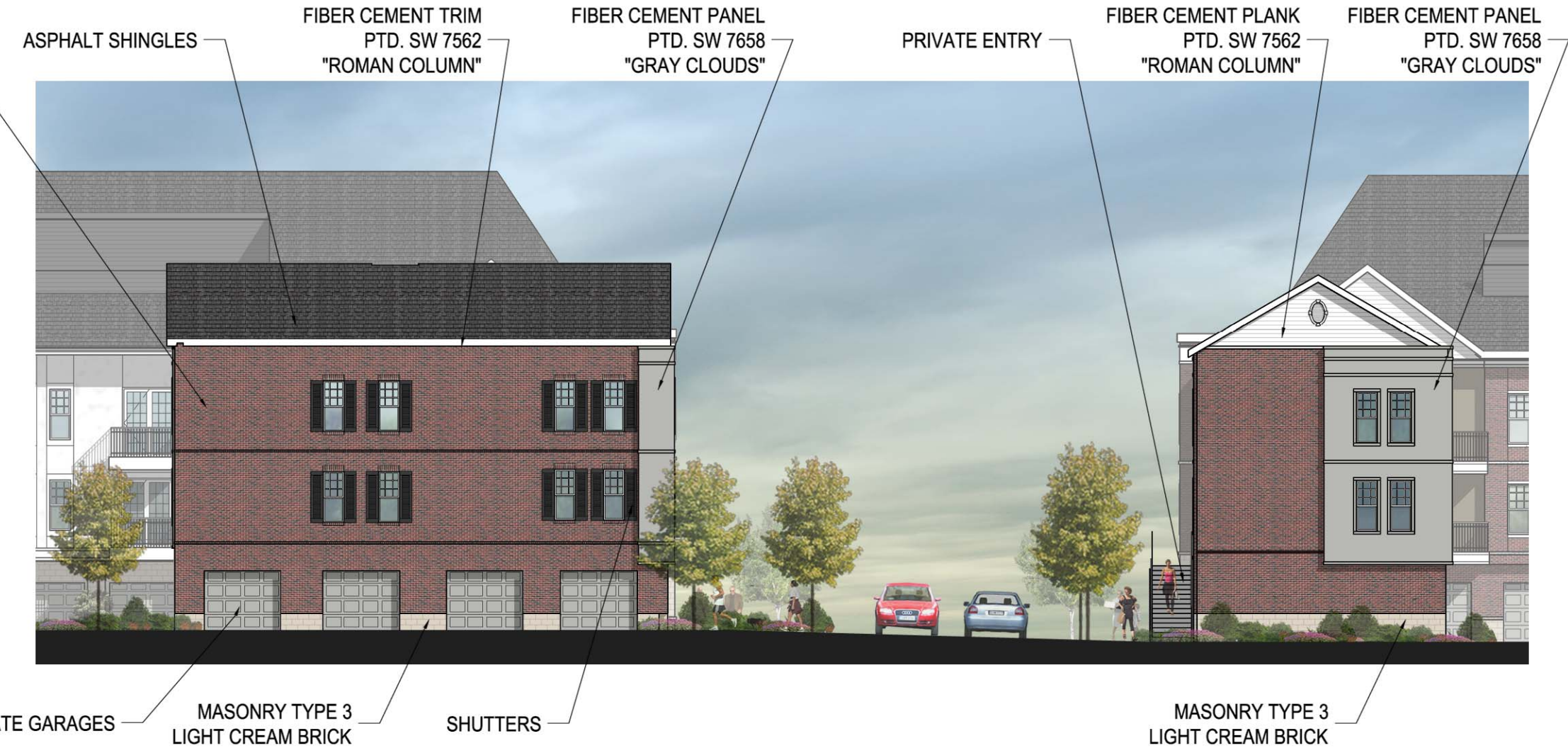
BUILDING B - SOUTH COURTYARD				
TOTAL S.F.	MASONRY		OTHER MATERIALS	
		BRICK	1,211 SF	STUCCO
			FIBER CEMENT	204 SF
3,206 SF		1,211 SF		1,985 SF
		38%		62%



3 3 BAY CARRIAGE HOUSE WEST ELEVATION
Scale: 1/16" = 1'-0"

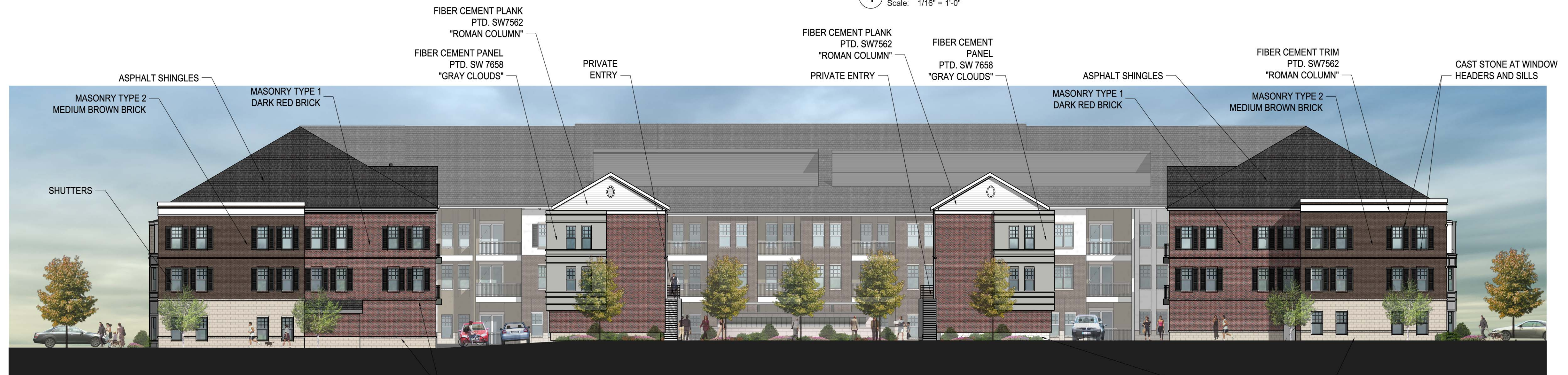
3 BAY CARRIAGE HOUSE WEST				
TOTAL S.F.	MASONRY	OTHER MATERIALS		
	BRICK	2,181 SF	STUCCO	0 SF
			FIBER CEMENT	108 SF
2,289 SF	2,181 SF		FIBER CEMENT	108 SF
		95%		5%

CARRIAGE HOUSE REAR AND SIDE				
TOTAL S.F.	MASONRY	OTHER MATERIALS		
	BRICK	2,080 SF	STUCCO	0 SF
			FIBER CEMENT	604 SF
2,614 SF	2,080 SF		FIBER CEMENT	604 SF
		77%		23%



4 CARRIAGE HOUSE REAR ELEVATION AND 3 BAY CARRIAGE HOUSE SIDE ELEVATION
Scale: 1/16" = 1'-0"

EAST THROUGH COURTYARD				
TOTAL S.F.	MASONRY	OTHER MATERIALS		
	BRICK	5,068 SF	STUCCO	0 SF
			FIBER CEMENT	544 SF
5,612 SF	5,068 SF		FIBER CEMENT	544 SF
		90%		10%

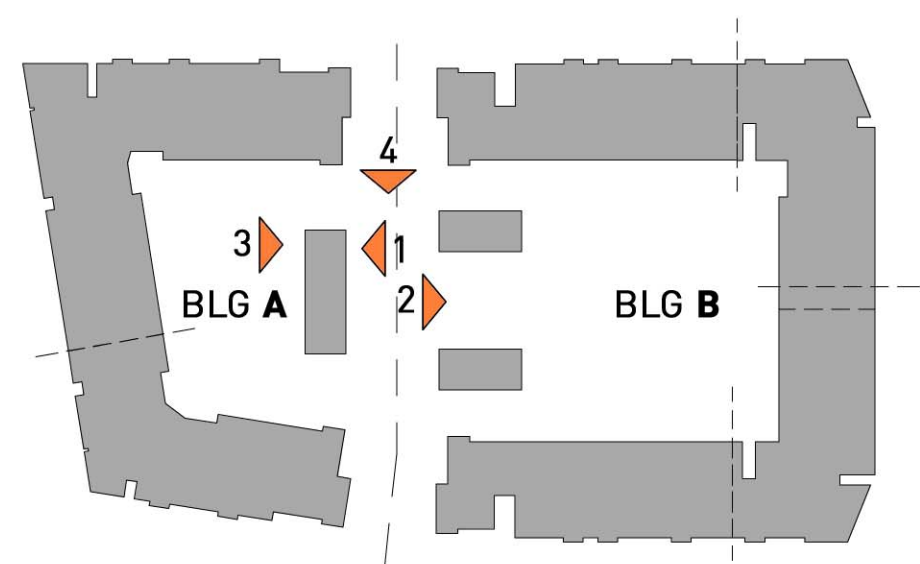


2 VIEW EAST THROUGH COURTYARD
Scale: 1/16" = 1'-0"

WEST THROUGH COURTYARD				
TOTAL S.F.	MASONRY	OTHER MATERIALS		
	BRICK	5,124 SF	STUCCO	0 SF
			FIBER CEMENT	901 SF
6,025 SF	5,124 SF		FIBER CEMENT	901 SF
		85%		15%



1 VIEW WEST THROUGH COURTYARD
Scale: 1/16" = 1'-0"



MATERIAL KEY			
	MASONRY TYPE 1 "DARK RED BRICK"		FIBER CEMENT PANEL
	MASONRY TYPE 2 "MEDIUM BROWN BRICK"		FIBER CEMENT PLANK
	MASONRY TYPE 3 "LIGHT CREAM BRICK"		STUCCO