

McKinney National Airport



McKinney National Airport

- **City has owned and operated the airport since 1979**
- City contributed General Fund money to its operation – approximately \$550,000 a year -- since 2002
- **\$71 million was invested in airport infrastructure to support private development since 2002**
- Development was slow to non-existent
- **City was forced to explore new revenue sources and enhanced development initiatives**
- City purchased the Fixed Base Operations and Hangar Facilities in November 2013.

McKinney Air Center

- Award Winning

- #1 FBO in the Nation 2014
- #6 FBO in the Nation 2015
- 100% Occupied



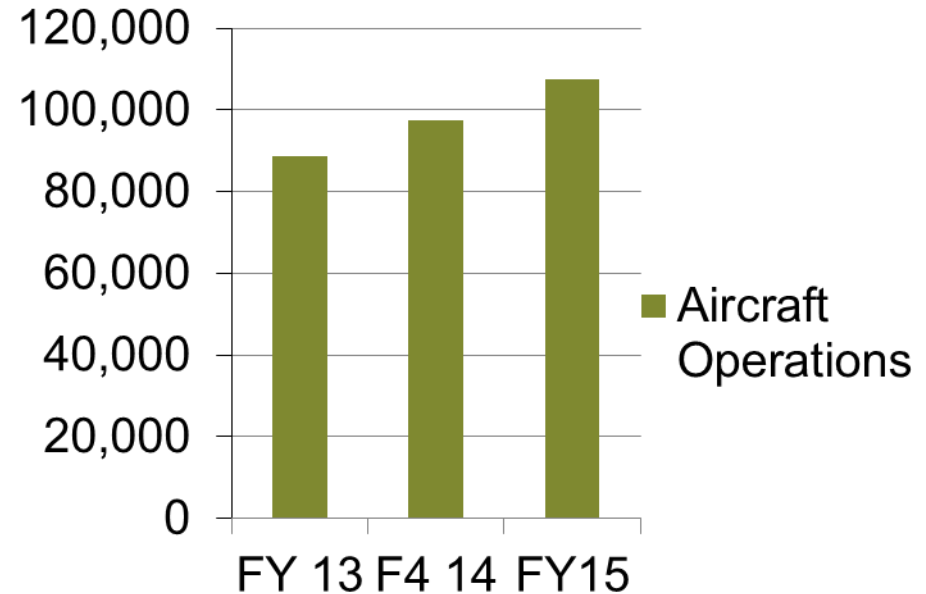
- Fuel Sales Volumes

- 2014 Fuel Volumes 888,000 gallons
- 2015 Fuel Volumes 1,100,000 gallons (increase of 23%)



McKinney National Airport Aircraft

Based Aircraft Type	2015
Small Engine	251
Multi Engine	33
Jet	28
Helicopter	4
Total	316



Hangar Requests Since January 2013

- Small Engine / Multi Engine 104
- Cabin Class / Jet Aircraft 31
- Aviation Related Companies 14

Aviation Companies Since Nov 2013



- Monarch Air (Expansion)
- First Flight
- Ag Power
- Front Burner Restaurants
- Fenton Motors
- Club Air
- Jet Trader Group
- AirFlite
- Dallas Jet Int.
- Corp. Flight Mgt.
- ATP
- RR Aviation
- TSG Jet Partners
- Pro-Health
- Letourneau University
- Royal Air Cargo

Airport Tax Base

McKinney National Airport Annual Tax Generation Summary

Calculated September 2015

Tax Collection Statistics Tax Year 2003 thru 2015 (13 years)

Collecting Entity	Total Collected	Average Per Year
City of McKinney	6,481,677	498,591
MISD	18,470,513	1,420,809
Collin County	2,705,187	208,091
Collin College	951,530	733,195
Grand Total	\$28,608,907	\$2,200,685

- *2016 BPP increase of \$12,000,000*
- MISD: *Average cost to educate one student per year is \$8,297.*
- On average the airport generates \$1,420,800 in ad valorem tax per year, which is the equivalent of educating 170 children at Fannie Finch Elementary School.

Airport Development

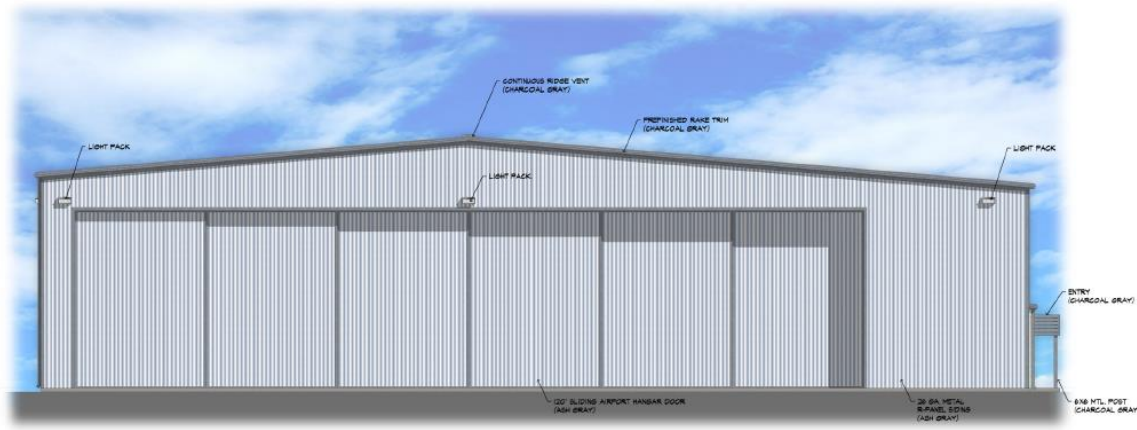
Airport Master Plan Update

Examine need for:

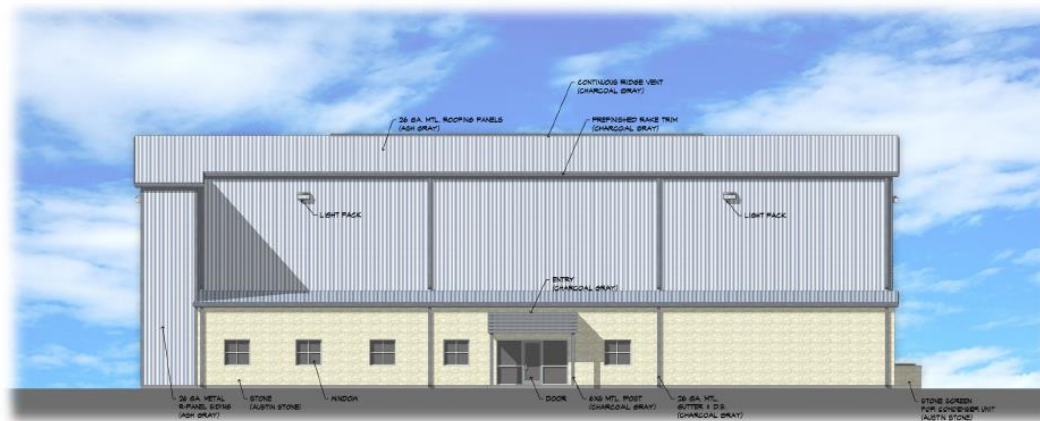
- Expanded passenger terminal complex
 - Terminal with restaurant
 - Expanded Parking
- Runway Extension
- Relocated and expanded small hangar complex

On-Going Facility Development

- Hangar Development 2015-17



1 FRONT ELEVATION
1/8" = 1'-0"



2 RIGHT SIDE ELEVATION
1/8" = 1'-0"

McKinney

National Airport



Your North Dallas
Business
Aviation Connection

