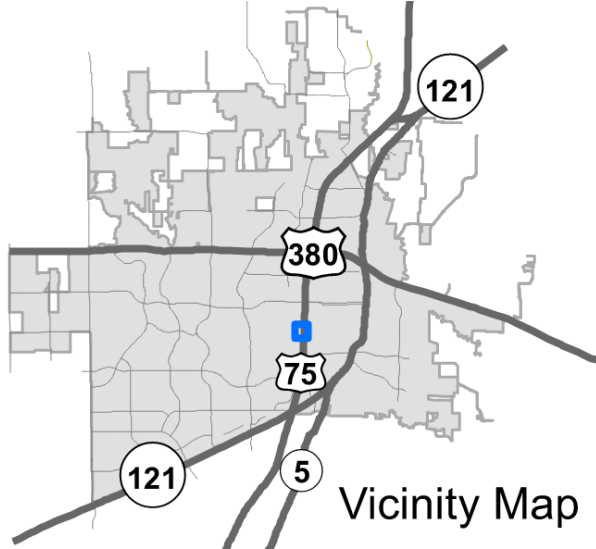
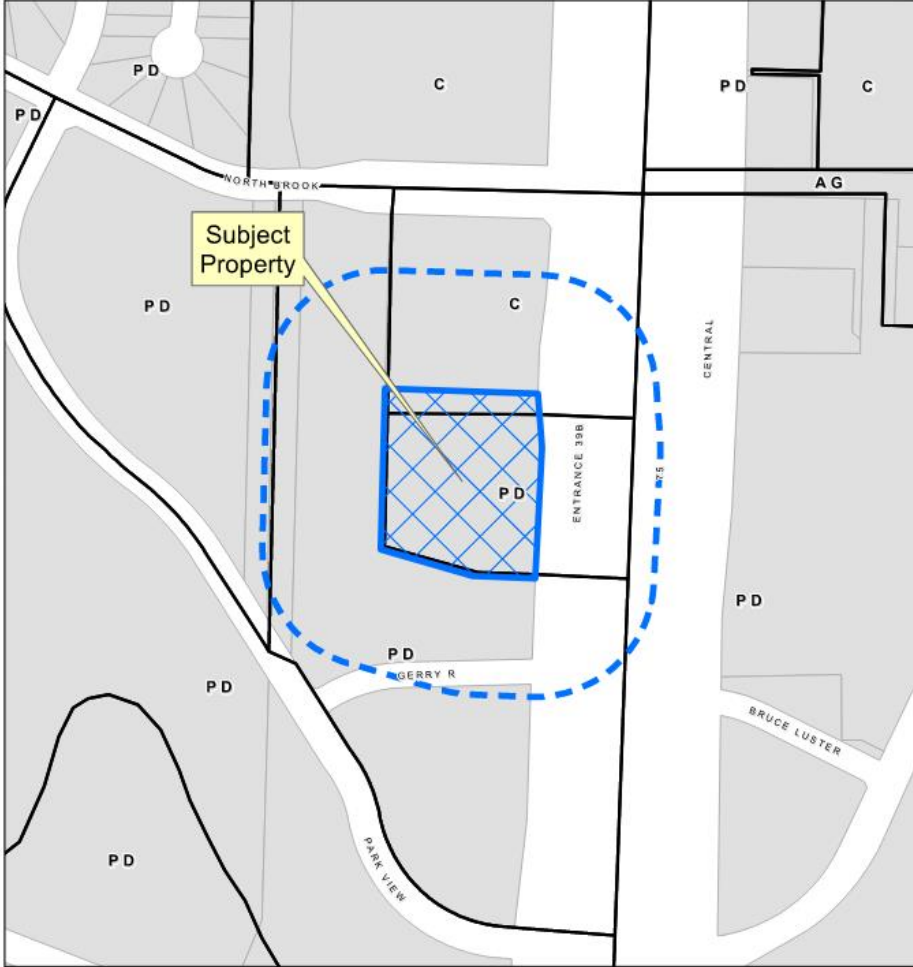


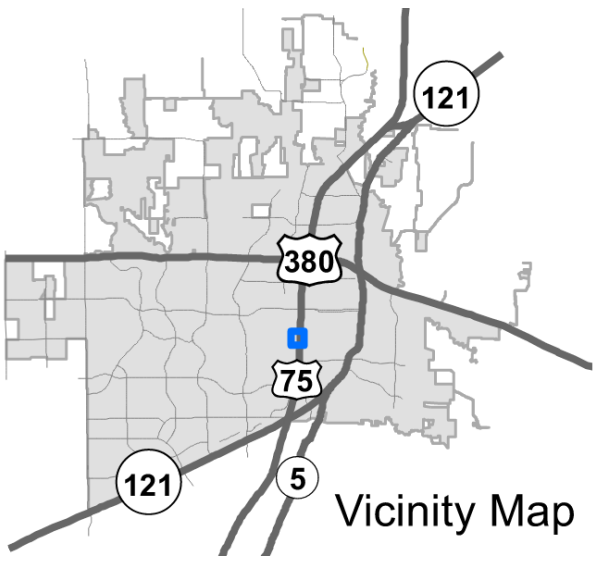
# Brandon Tomes Subaru Rezone

22-0074Z

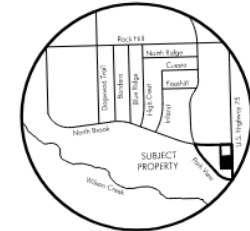
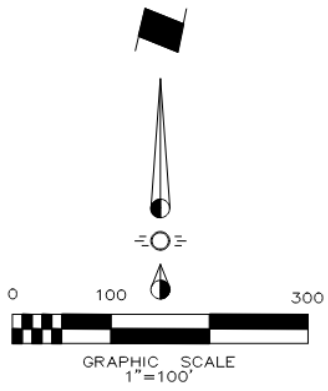
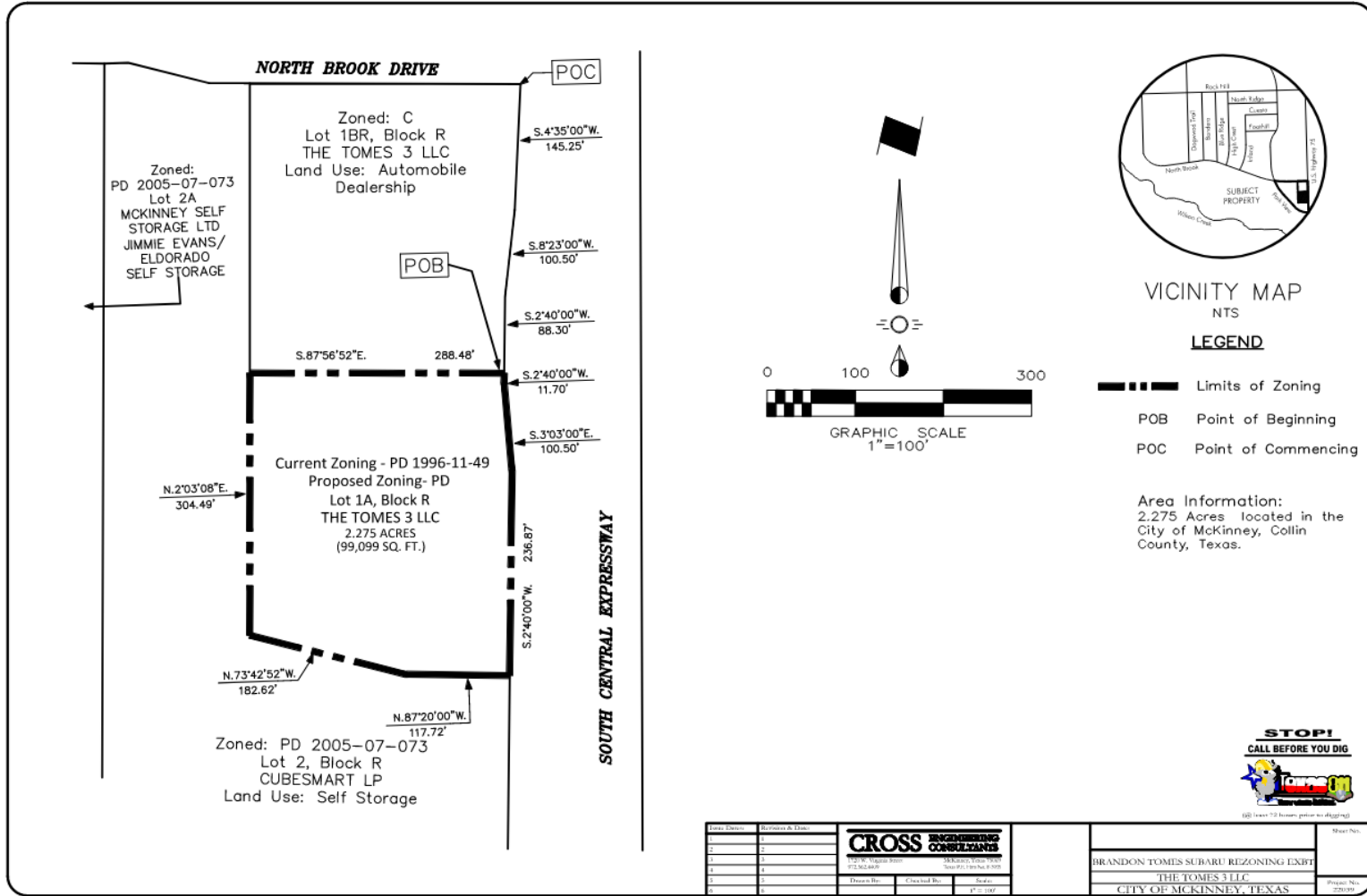
# Location Map



# Aerial Exhibit



# Proposed Zoning Exhibit



VICINITY MAP  
NTS

**LEGEND**

- Limits of Zoning
- POB Point of Beginning
- POC Point of Commencing

Area Information:  
 2.275 Acres located in the  
 City of McKinney, Collin  
 County, Texas.



Drawn By:	Checked By:	Scale:
1	2	1"=100'

**CROSS ENGINEERING CONSULTANTS**

BRANDON TOMES SUBARU REZONING EXHIBIT  
 THE TOMES 3 LLC  
 CITY OF MCKINNEY, TEXAS



