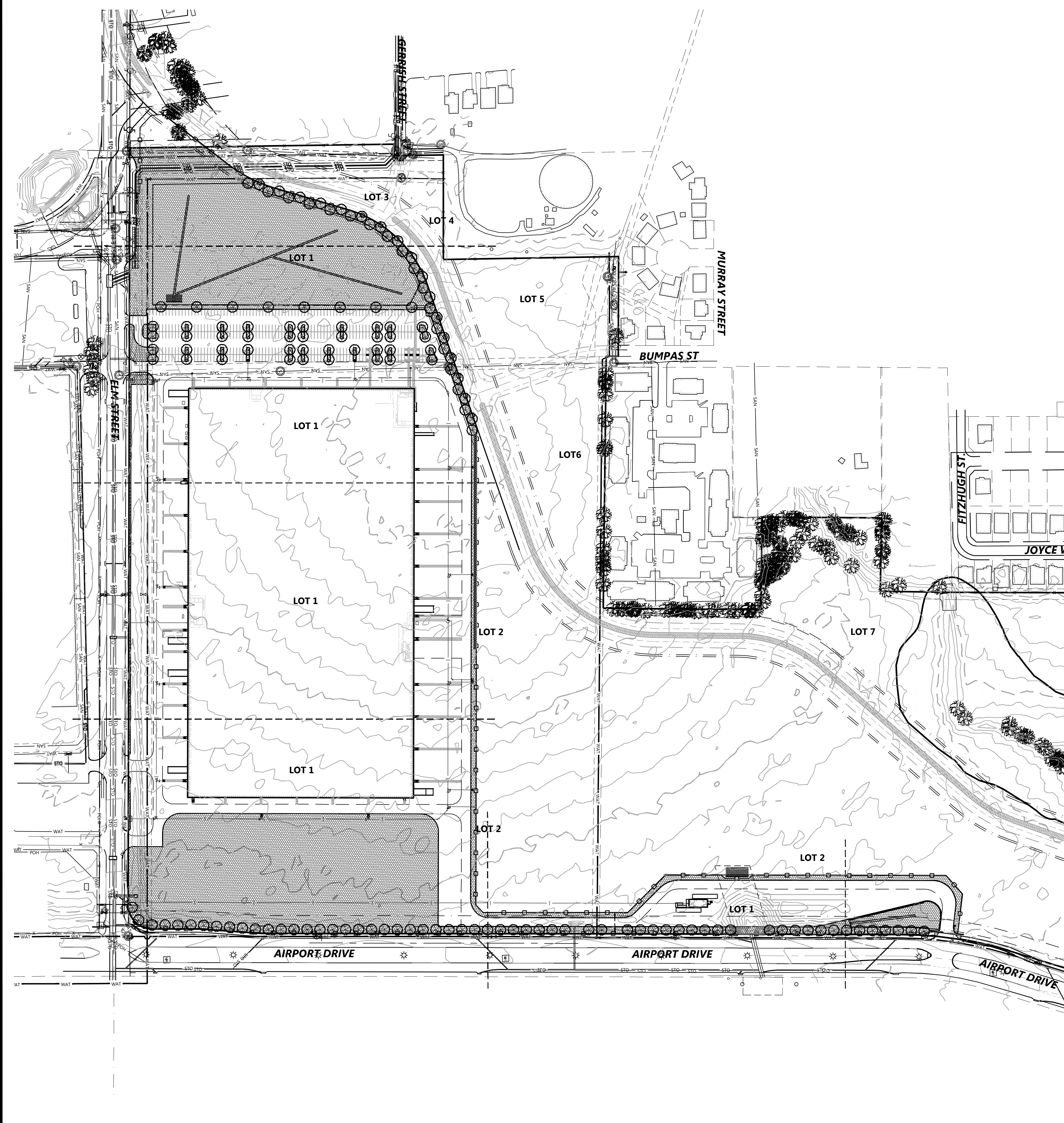


© 2020 Westwood Professional Services, Inc.

N:\0023657\0111 PROJECT DATA\DWG\CIVIL\0023657-01-C-1P.DWG



### Preliminary Plant Schedule

QUANTITY	CODE	COMMON/BOTANICAL NAME	SIZE/ROOT	SPACING O.C.	HEIGHT AT MATURITY
<b>TREES - OVERSTORY</b>					
16	CEE	CEDAR ELM / ULMUS CRASSIFOLIA	4" CAL./ 12' HT. B&B	AS SHOWN	H 60'-70' W 50'-60'
31	LIO	LIVE OAK / QUERCUS VIRGINIANA	4" CAL./ 12' HT. B&B	AS SHOWN	H 40'-80' W 60'-100'
24	SHO	SHUMARD OAK / QUERCUS SHUMARDII	4" CAL./ 12' HT. B&B	AS SHOWN	H 40'-60' W 50'-70'
8	CHO	CHINQUAPIN OAK / QUERCUS MUHLENBERGII	4" CAL./ 12' HT. B&B	AS SHOWN	H 50'-80' W 50'-70'
17	CAM	CADDO MAPLE / ACER SACCHARUM 'JOHN PAIR'	4" CAL./ 12' HT. B&B	AS SHOWN	H 30'-45' W 30'-40'
28	BTM	BIGTOOTH MAPLE / ACER GRANDIDENTATUM	4" CAL./ 12' HT. B&B	AS SHOWN	H 20'-30' W 20'-30'
18	AGG	AUTUMN GOLD GINKGO / GINKGO BILOBA 'AUTUMN GOLD'	4" CAL./ 12' HT. B&B	AS SHOWN	H 25'-30' W 40'-50'
<b>SHRUBS - EVERGREEN</b>					
100	NSH	NELLIE R. STEVENS HOLLIE / ILEX X 'NELLIE R. STEVENS'	#5 CONT./ 36" HT. MIN.	6'-0" O.C.	H 15'-25' W 8'-12'

NOTE: QUANTITIES ON PLAN SUPERSEDE LIST QUANTITIES IN THE EVENT OF A DISCREPANCY.

### Landscape Requirements

<b>TOTAL TREES REQUIRED:</b>	<b>131 TREES</b>
<b>PERIMETER LANDSCAPE REQUIREMENTS:</b>	
<b>STREET TREES REQUIRED:</b>	<b>89 TREES</b>
<ul style="list-style-type: none"> <li>ONE (1) LARGE TREE, 4 CAL. IN., PER FORTY (40) LINEAR FEET OF ROADWAY FRONTAGE SHALL BE PLANTED WITHIN LANDSCAPE BUFFER AREA.</li> <li>PROPOSED ELM STREET FRONTAGE = 1,178 LF (LOT 1); 30 TREES REQUIRED; 35 TREES PROVIDED</li> <li>AIRPORT DRIVE FRONTAGE = 2354 LF; 59 TREES REQUIRED; 59 TREES PROVIDED</li> </ul>	
<ul style="list-style-type: none"> <li>10' LANDSCAPE BUFFER REQUIRED ALONG MINOR THOROUGHFARES</li> <li>20' LANDSCAPE BUFFER REQUIRED ALONG MAJOR THOROUGHFARES</li> <li>30' LANDSCAPE BUFFER REQUIRED AT CORNER CLIP OF INTERSECTIONS</li> </ul>	
<b>INTERIOR LANDSCAPE PARKING REQUIREMENTS:</b>	<b>42 TREES</b>
<ul style="list-style-type: none"> <li>ANY NON-RESIDENTIAL PARKING AREA THAT CONTAINS TWENTY (20) OR MORE PARKING SPACES SHALL PROVIDE THE FOLLOWING:</li> <li>ONE (1) LARGE TREE, 4 CAL. IN., WITHIN 65' OF EVERY PARKING SPACE.</li> <li>ONE (1) LARGE TREE, 4 CAL. IN., PLANTED IN AN INTERIOR PARKING ISLAND PER EVERY 10 PARKING SPACES.</li> <li>(355 PARKING SPACES: 42 TREES REQUIRED; 48 PROVIDED)</li> </ul>	

### Landscape Provisions

<b>TOTAL LANDSCAPING PROVIDED:</b>	<b>142 TREES</b>
<ul style="list-style-type: none"> <li>OVERSTORY TREES</li> <li>EVERGREEN SHRUBS</li> </ul>	<ul style="list-style-type: none"> <li>142 TREES</li> <li>100 SHRUBS</li> </ul>

### Landscape Area Requirements

<b>10% OF TOTAL SITE AREA TO BE LANDSCAPED</b>	<b>(TOTAL SITE AREA = 48.4 AC)</b>
<ul style="list-style-type: none"> <li>LANDSCAPE AREA REQUIRED: 4.8 AC / 10%</li> <li>LANDSCAPE AREA PROPOSED: 10.3 AC / 23%</li> </ul>	
<b>15% OF TOTAL STREET YARD TO BE LANDSCAPED</b>	<b>(TOTAL STREET YARD AREA = 2.0 AC)</b>
<ul style="list-style-type: none"> <li>LANDSCAPE AREA REQUIRED: 0.3 AC / 15%</li> <li>LANDSCAPE AREA PROPOSED: 1.4 AC / 70%</li> </ul>	



VICINITY MAP  
NOT TO SCALE

### Plant Legend

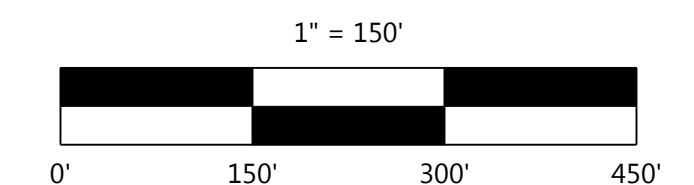
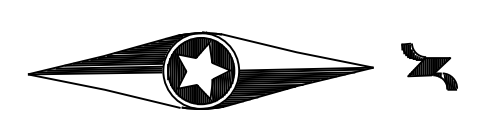
- OVERSTORY TREES
- EVERGREEN SHRUBS
- TURF - 419 TIFF BERMUDA SOD
- BARK MULCH

**IRRIGATION NOTE:**

- PERMANENT IRRIGATION SYSTEM SHALL BE INSTALLED PER CITY REQUIREMENTS. PERMANENT IRRIGATION TO BE INSTALLED IN LANDSCAPE AREAS AS PHASES COMPLETED. TEMPORARY IRRIGATION MAY BE NECESSARY IN SOME AREAS TO INSURE PLANT SURVIVAL UNTIL ALL CONSTRUCTION COMPLETE WITHIN A PHASE AND PERMANENT IRRIGATION INSTALLED. PERMANENT IRRIGATION TO BE AUTOMATIC AND UNDERGROUND SYSTEM WITH RAIN AND FREEZE SENSORS AND SHALL BE DESIGNED AND INSTALLED BY QUALIFIED AND LICENSED PROFESSIONALS.

### CAUTION !!! EXISTING UTILITIES

EXISTING UTILITIES AND UNDERGROUND FACILITIES INDICATED ON THESE PLANS HAVE BEEN LOCATED FROM REFERENCE INFORMATION. IT SHALL BE THE RESPONSIBILITY OF THE CONTRACTOR TO VERIFY BOTH HORIZONTALLY AND VERTICALLY THE LOCATION OF ALL EXISTING UTILITIES AND UNDERGROUND FACILITIES PRIOR TO CONSTRUCTION. TO TAKE NECESSARY PRECAUTIONS IN ORDER TO PROTECT ALL FACILITIES ENCOUNTERED. THE CONTRACTOR SHALL PRESERVE AND PROTECT ALL EXISTING UTILITIES FROM DAMAGE DURING CONSTRUCTION.



DESIGNED:	AWS
CHECKED:	RPP
DRAWN:	WTW
HORIZONTAL SCALE:	150'
VERTICAL SCALE:	30' or 15'

INITIAL ISSUE: 02-17-2020  
REVISIONS:

PREPARED FOR:  
**ENCORE WIRE CORPORATION**  
1329 MILLWOOD ROAD  
MCKINNEY, TEXAS 75069



**ENCORE WIRE SERVICE CENTER**  
MCKINNEY, TEXAS

**Westwood**  
Phone (214) 473-4640 2740 Dallas Parkway, Suite 280  
Toll Free (888) 937-5150 Plano, TX 75093  
westwoodps.com

Westwood Professional Services, Inc.  
TYPE FIRM REGISTRATION NO. F-11756  
TBSL FIRM REGISTRATION NO. 10074302

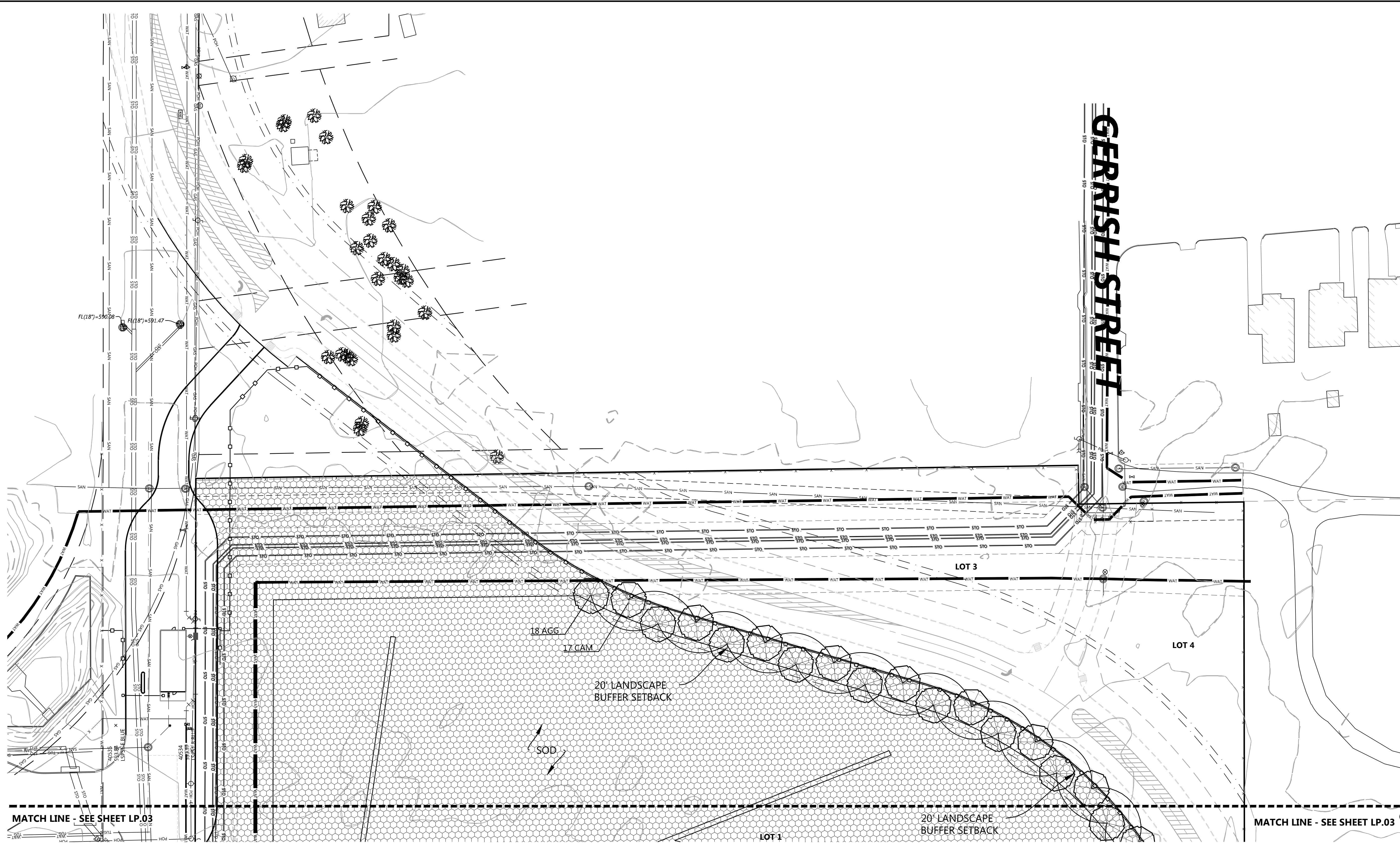
OVERALL LANDSCAPE PLAN

SHEET NUMBER:  
**LP.01**  
DATE: 02-17-2020

PROJECT NUMBER: 0023657.01

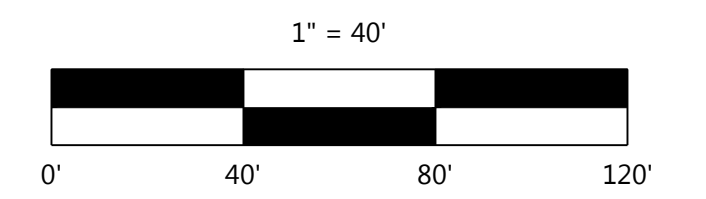
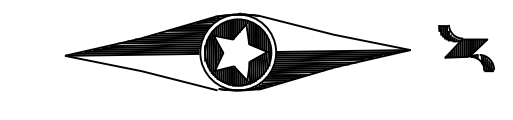
ENCORE WIRE SERVICE CENTER





VICINITY MAP  
NOT TO SCALE

**CAUTION !!!**  
**EXISTING UTILITIES**  
EXISTING UTILITIES AND UNDERGROUND FACILITIES INDICATED ON THESE PLANS HAVE BEEN LOCATED FROM REFERENCE INFORMATION. IT SHALL BE THE RESPONSIBILITY OF THE CONTRACTOR TO VERIFY BOTH HORIZONTALLY AND VERTICALLY THE LOCATION OF ALL EXISTING UTILITIES AND UNDERGROUND FACILITIES PRIOR TO CONSTRUCTION. TO TAKE NECESSARY PRECAUTIONS IN ORDER TO PROTECT ALL FACILITIES ENCOUNTERED. THE CONTRACTOR SHALL PRESERVE AND PROTECT ALL EXISTING UTILITIES FROM DAMAGE DURING CONSTRUCTION.



**Plant Legend**

- OVERSTORY TREES
- EVERGREEN SHRUBS
- TURF - 419 TIFF BERMUDA SOD
- BARK MULCH

**Preliminary Plant Schedule**

QUANTITY	CODE	COMMON/BOTANICAL NAME	SIZE/ROOT	SPACING O.C.	HEIGHT AT MATURITY
<b>TREES - OVERSTORY</b>					
16	CEE	CEDAR ELM / ULMUS CRASSIFOLIA	4" CAL/ 12' HT. B&B	AS SHOWN	H 60'-70' W 50'-60'
31	LIO	LIVE OAK / QUERCUS VIRGINIANA	4" CAL/ 12' HT. B&B	AS SHOWN	H 40'-80' W 60'-100'
24	SHO	SHUMARD OAK / QUERCUS SHUMARDII	4" CAL/ 12' HT. B&B	AS SHOWN	H 40'-60' W 50'-70'
8	CHO	CHINQUAPIN OAK / QUERCUS MUHLENBERGII	4" CAL/ 12' HT. B&B	AS SHOWN	H 50'-80' W 50'-70'
17	CAM	CADDO MAPLE / ACER SACCHARUM 'JOHN PAIR'	4" CAL/ 12' HT. B&B	AS SHOWN	H 30'-45' W 30'-40'
28	BTM	BIGTOOTH MAPLE / ACER GRANDIDENTATUM	4" CAL/ 12' HT. B&B	AS SHOWN	H 20'-30" W 20'-30"
18	AGG	AUTUMN GOLD GINKGO / GINKGO BILOBA 'AUTUMN GOLD'	4" CAL/ 12' HT. B&B	AS SHOWN	H 25'-30" W 40'-50"
<b>SHRUBS - EVERGREEN</b>					
100	NSH	NELLIE R. STEVENS HOLLIE / ILEX X 'NELLIE R. STEVENS'	#5 CONT/ 36" HT. MIN.	6'-0" O.C.	H 15'-25' W 8'-12'

NOTE: QUANTITIES ON PLAN SUPERSEDE LIST QUANTITIES IN THE EVENT OF A DISCREPANCY.

DESIGNED:	AWS	INITIAL ISSUE:	02-17-2020
CHECKED:	RPP	REVISIONS:	
DRAWN:	WTW		
HORIZONTAL SCALE:	40'		
VERTICAL SCALE:	8' or 4'		

PREPARED FOR:  
**ENCORE WIRE CORPORATION**  
1329 MILLWOOD ROAD  
MCKINNEY, TEXAS 75069



**ENCORE WIRE SERVICE CENTER**  
MCKINNEY, TEXAS

**Westwood**

Phone (214) 473-4640 2740 Dallas Parkway, Suite 280  
Toll Free (888) 937-5150 Plano, TX 75093  
westwoodps.com

Westwood Professional Services, Inc.  
TYPE FIRM REGISTRATION NO. F-11756  
TSPS FIRM REGISTRATION NO. 10074302

LANDSCAPE PLAN

SHEET NUMBER:

**LP.02**

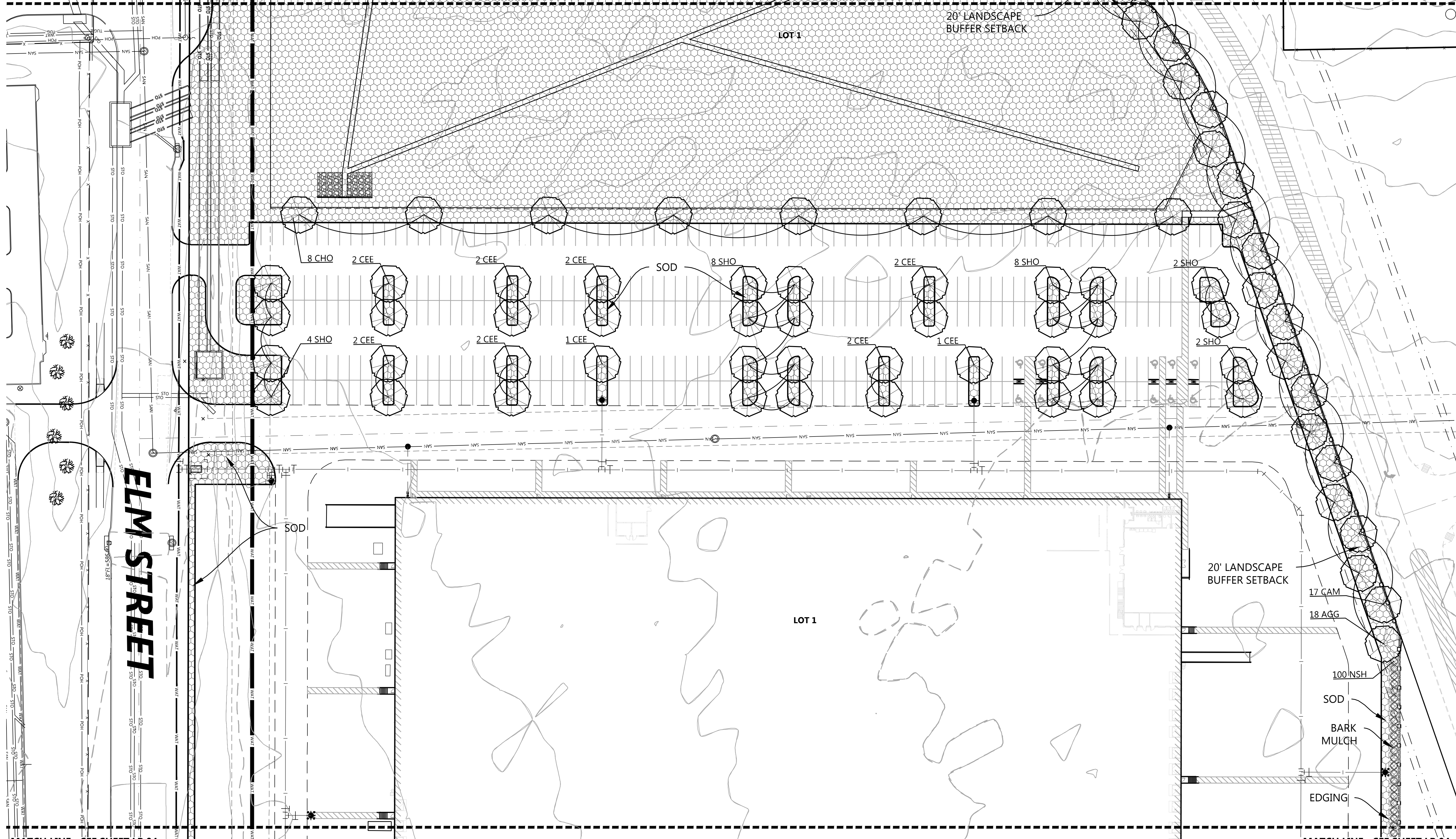
PROJECT NUMBER: 0023657.01 DATE: 02-17-2020



© 2020 Westwood Professional Services, Inc.

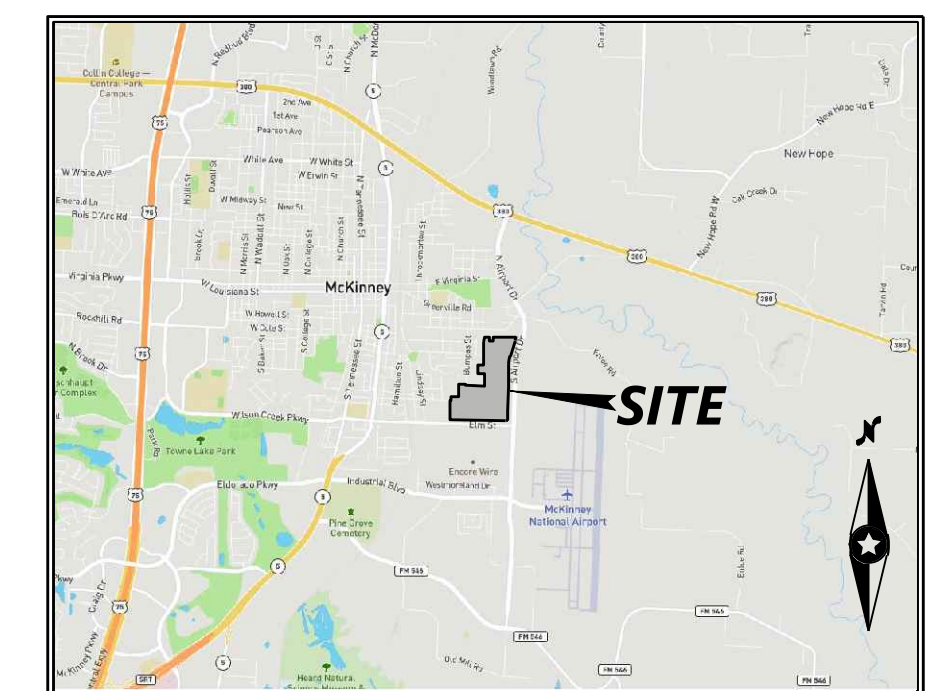
MATCH LINE - SEE SHEET LP.02

MATCH LINE - SEE SHEET LP.02



MATCH LINE - SEE SHEET LP.04

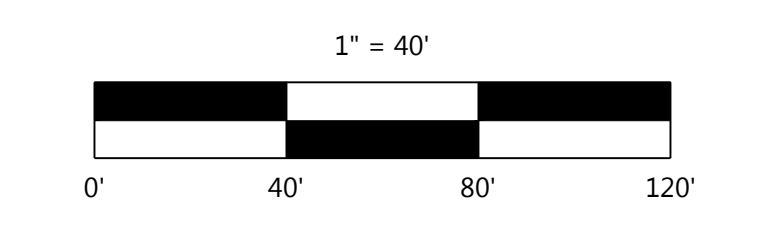
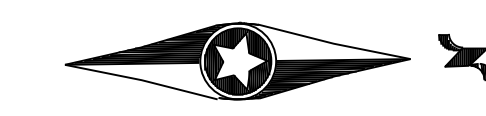
MATCH LINE - SEE SHEET LP.04



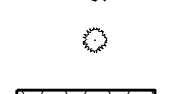
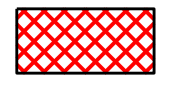
VICINITY MAP  
NOT TO SCALE

**CAUTION !!!**  
EXISTING UTILITIES

EXISTING UTILITIES AND UNDERGROUND FACILITIES INDICATED ON THESE PLANS HAVE BEEN LOCATED FROM REFERENCE INFORMATION. IT SHALL BE THE RESPONSIBILITY OF THE CONTRACTOR TO VERIFY BOTH HORIZONTALLY AND VERTICALLY THE LOCATION OF ALL EXISTING UTILITIES AND UNDERGROUND FACILITIES PRIOR TO CONSTRUCTION. TO TAKE NECESSARY PRECAUTIONS IN ORDER TO PROTECT ALL FACILITIES ENCOUNTERED. THE CONTRACTOR SHALL PRESERVE AND PROTECT ALL EXISTING UTILITIES FROM DAMAGE DURING CONSTRUCTION.



**Plant Legend**

-  OVERSTORY TREES
-  EVERGREEN SHRUBS
-  TURF - 419 TIFF BERMUDA SOD
-  BARK MULCH

**Preliminary Plant Schedule**

QUANTITY	CODE	COMMON/BOTANICAL NAME	SIZE/ROOT	SPACING O.C.	HEIGHT AT MATURITY
<b>TREES - OVERSTORY</b>					
16	CEE	CEDAR ELM / ULMUS CRASSIFOLIA	4" CAL / 12" HT. B&B	AS SHOWN	H 60'-70' W 50'-60'
31	LIO	LIVE OAK / QUERCUS VIRGINIANA	4" CAL / 12" HT. B&B	AS SHOWN	H 40'-80' W 60'-100'
24	SHO	SHUMARD OAK / QUERCUS SHUMARDII	4" CAL / 12" HT. B&B	AS SHOWN	H 40'-60' W 50'-70'
8	CHO	CHINQUAPIN OAK / QUERCUS MUHLENBERGII	4" CAL / 12" HT. B&B	AS SHOWN	H 50'-80' W 50'-70'
17	CAM	CADDO MAPLE / ACER SACCHARUM 'JOHN PAIR'	4" CAL / 12" HT. B&B	AS SHOWN	H 30'-45' W 30'-40'
28	BTM	BIGTOOTH MAPLE / ACER GRANDIDENTATUM	4" CAL / 12" HT. B&B	AS SHOWN	H 20'-30' W 20'-30'
18	AGG	AUTUMN GOLD GINKGO / GINKGO BILOBA 'AUTUMN GOLD'	4" CAL / 12" HT. B&B	AS SHOWN	H 25'-30' W 40'-50'
<b>SHRUBS - EVERGREEN</b>					
100	NSH	NELLIE R. STEVENS HOLLIE / ILEX X 'NELLIE R. STEVENS'	#5 CONT / 36" HT. MIN.	6'-0" O.C.	H 15'-25' W 8'-12'

NOTE: QUANTITIES ON PLAN SUPERSEDE LIST QUANTITIES IN THE EVENT OF A DISCREPANCY.

DESIGNED:	AWS	INITIAL ISSUE:	02-17-2020
CHECKED:	RPP	REVISIONS:	
DRAWN:	WTW	PREPARED FOR:	ENCORE WIRE CORPORATION
HORIZONTAL SCALE:	40'		1329 MILLWOOD ROAD
VERTICAL SCALE:	8' or 4'		MCKINNEY, TEXAS 75069



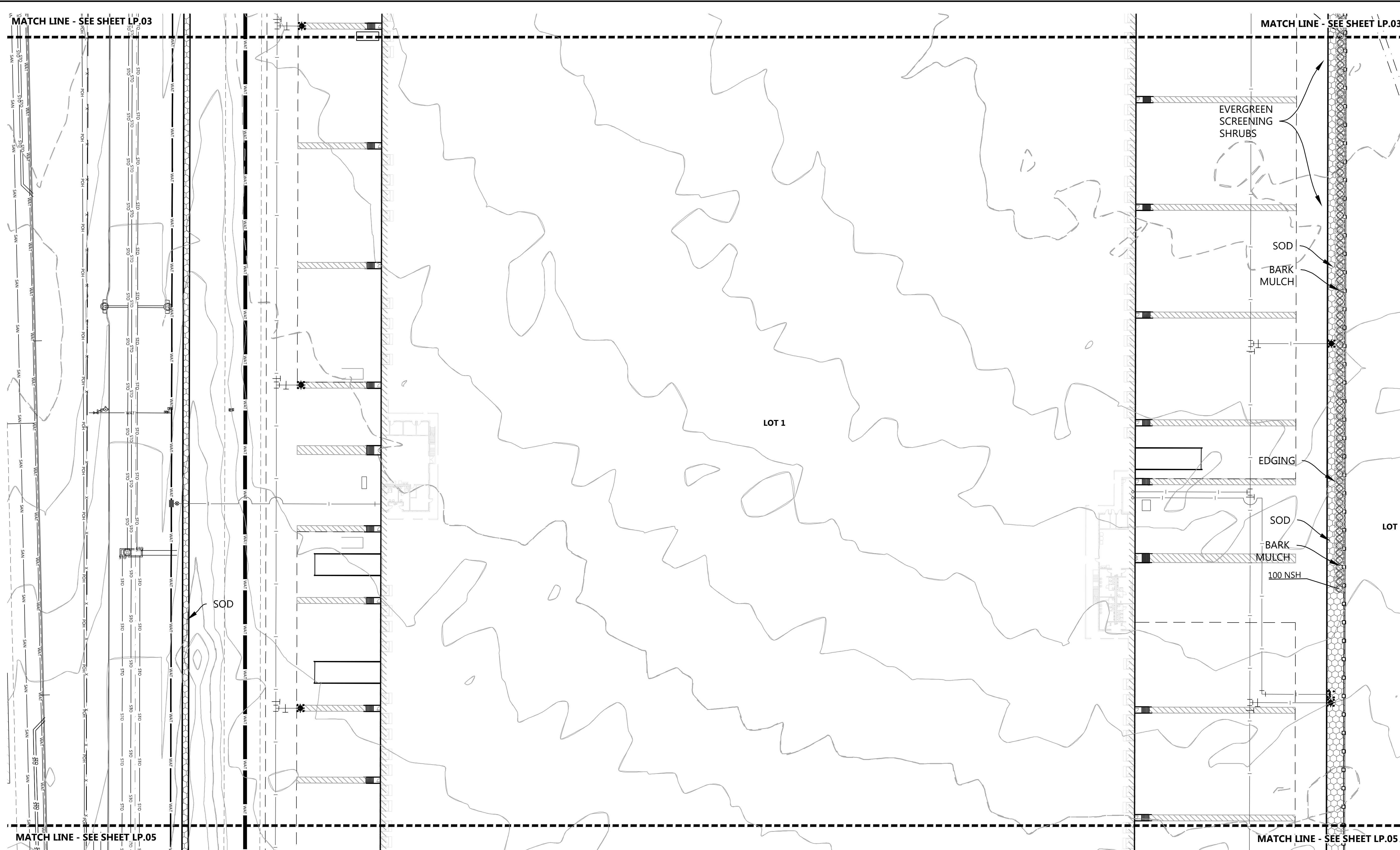
**ENCORE WIRE SERVICE CENTER**  
MCKINNEY, TEXAS

**Westwood**  
 Phone (214) 473-4640 2740 Dallas Parkway, Suite 280  
 Toll Free (888) 937-5150 Plano, TX 75093  
 westwoodps.com  
 Westwood Professional Services, Inc.  
 TBPES FIRM REGISTRATION NO. F-11756  
 TBPES FIRM REGISTRATION NO. 10074302

SHEET NUMBER: **LP.03**  
**LANDSCAPE PLAN**  
 PROJECT NUMBER: 0023657.01 DATE: 02-17-2020

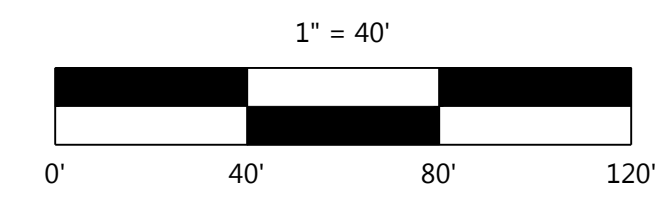
ENCORE WIRE SERVICE CENTER





VICINITY MAP  
NOT TO SCALE

**CAUTION !!!**  
EXISTING UTILITIES  
EXISTING UTILITIES AND UNDERGROUND FACILITIES INDICATED ON THESE PLANS HAVE BEEN LOCATED FROM REFERENCE INFORMATION. IT SHALL BE THE RESPONSIBILITY OF THE CONTRACTOR TO VERIFY BOTH HORIZONTALLY AND VERTICALLY THE LOCATION OF ALL EXISTING UTILITIES AND UNDERGROUND FACILITIES PRIOR TO CONSTRUCTION, TO TAKE NECESSARY PRECAUTIONS IN ORDER TO PROTECT ALL FACILITIES ENCOUNTERED. THE CONTRACTOR SHALL PRESERVE AND PROTECT ALL EXISTING UTILITIES FROM DAMAGE DURING CONSTRUCTION.



**Plant Legend**

- OVERSTORY TREES
- EVERGREEN SHRUBS
- TURF - 419 TIFF BERMUDA SOD
- BARK MULCH

**Preliminary Plant Schedule**

QUANTITY	CODE	COMMON/BOTANICAL NAME	SIZE/ROOT	SPACING O.C.	HEIGHT AT MATURITY
<b>TREES - OVERSTORY</b>					
16	CEE	CEDAR ELM / ULMUS CRASSIFOLIA	4" CAL/ 12" HT. B&B	AS SHOWN	H 60'-70' W 50'-60'
31	LIO	LIVE OAK / QUERCUS VIRGINIANA	4" CAL/ 12" HT. B&B	AS SHOWN	H 40'-80' W 60'-100'
24	SHO	SHUMARD OAK / QUERCUS SHUMARDII	4" CAL/ 12" HT. B&B	AS SHOWN	H 40'-60' W 50'-70'
8	CHO	CHINQUAPIN OAK / QUERCUS MUHLENBERGII	4" CAL/ 12" HT. B&B	AS SHOWN	H 50'-80' W 50'-70'
17	CAM	CADD O MAPLE / ACER SACCHARUM 'JOHN PAIR'	4" CAL/ 12" HT. B&B	AS SHOWN	H 30'-45' W 30'-40'
28	BTM	BIGTOOTH MAPLE / ACER GRANDIDENTATUM	4" CAL/ 12" HT. B&B	AS SHOWN	H 20'-30' W 20'-30'
18	AGG	AUTUMN GOLD GINKGO / GINKGO BILOBA 'AUTUMN GOLD'	4" CAL/ 12" HT. B&B	AS SHOWN	H 25'-30' W 40'-50'
<b>SHRUBS - EVERGREEN</b>					
100	NSH	NELLIE R. STEVENS HOLLIE / ILEX X 'NELLIE R. STEVENS'	#5 CONT./ 36" HT. MIN.	6'-0" O.C.	H 15'-25' W 8'-12'

NOTE: QUANTITIES ON PLAN SUPERSEDE LIST QUANTITIES IN THE EVENT OF A DISCREPANCY.

DESIGNED:            AWS  
 CHECKED:            RPP  
 DRAWN:            WTW  
 HORIZONTAL SCALE:            40'  
 VERTICAL SCALE:            8' or 4'

INITIAL ISSUE:            02-17-2020  
 REVISIONS:           

PREPARED FOR:  
**ENCORE WIRE CORPORATION**  
 1329 MILLWOOD ROAD  
 MCKINNEY, TEXAS 75069



**ENCORE WIRE SERVICE CENTER**  
 MCKINNEY, TEXAS

**Westwood**  
 Phone (214) 473-4640 2740 Dallas Parkway, Suite 280  
 Toll Free (888) 937-5150 Plano, TX 75093  
 westwoodps.com  
 Westwood Professional Services, Inc.  
 TSPS FIRM REGISTRATION NO. F-11756  
 TSPS FIRM REGISTRATION NO. 10074302

LANDSCAPE PLAN

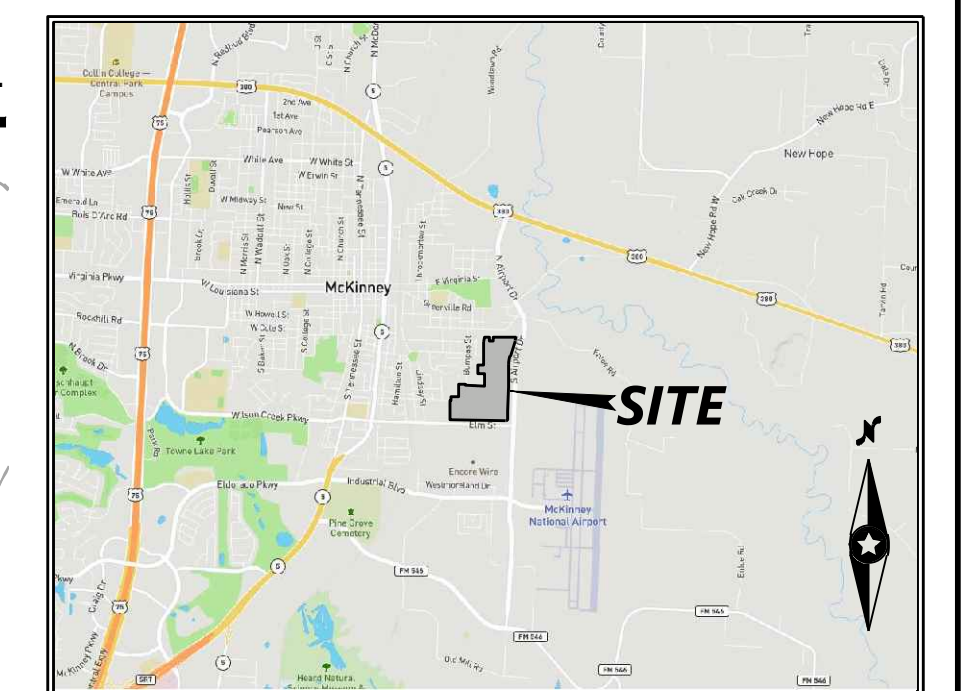
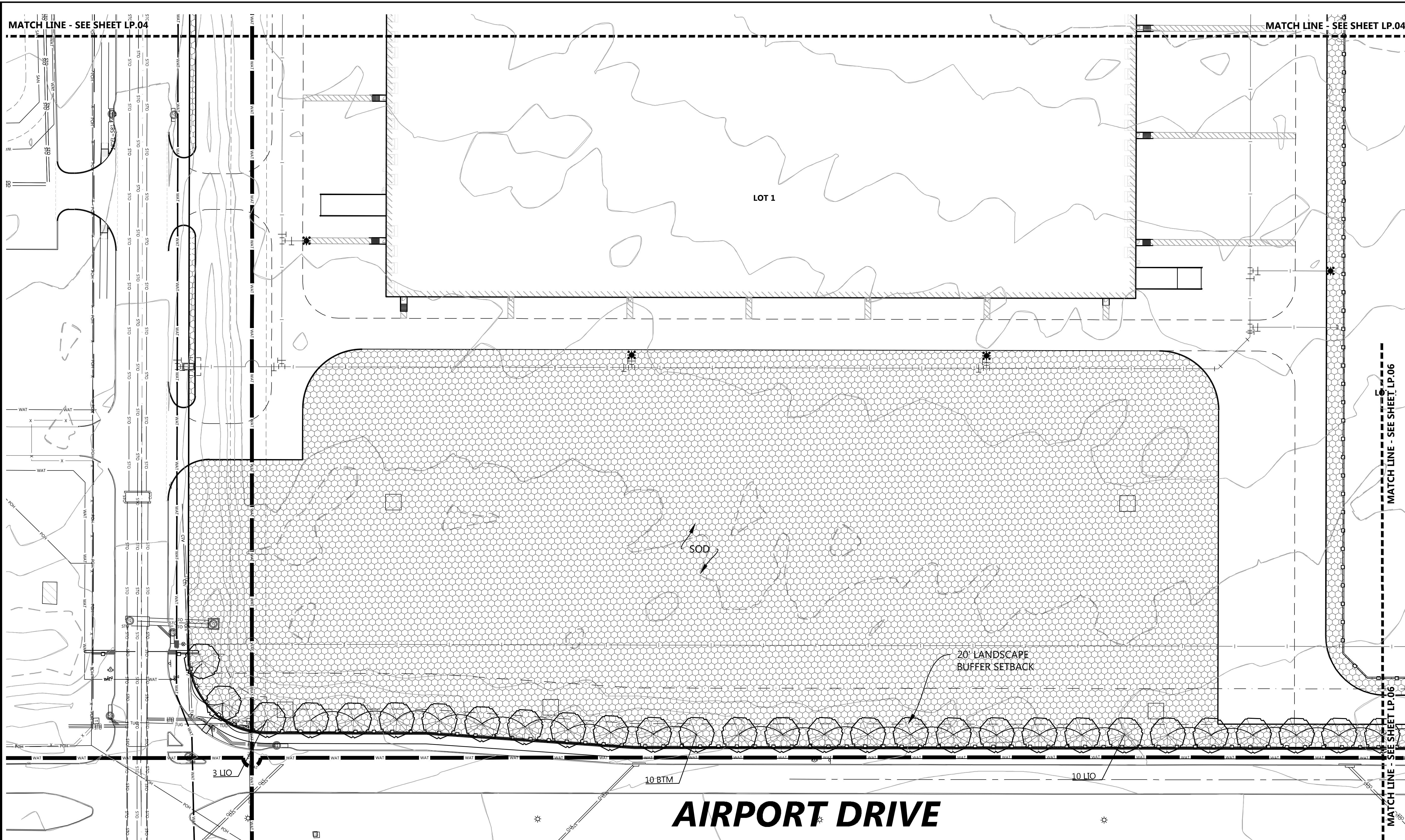
SHEET NUMBER:  
**LP.04**  
 DATE: 02-17-2020

PROJECT NUMBER: 0023657.01

ENCORE WIRE SERVICE CENTER



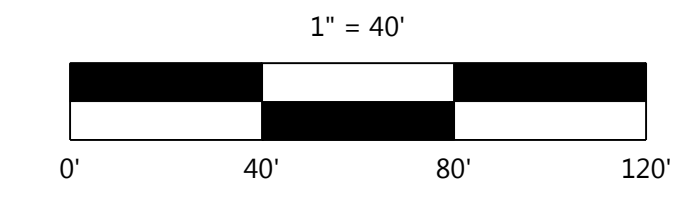
© 2020 Westwood Professional Services, Inc.



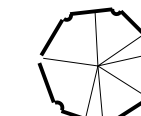
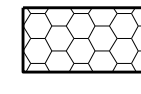
VICINITY MAP  
NOT TO SCALE

**CAUTION !!!**  
EXISTING UTILITIES

EXISTING UTILITIES AND UNDERGROUND FACILITIES INDICATED ON THESE PLANS HAVE BEEN LOCATED FROM REFERENCE INFORMATION. IT SHALL BE THE RESPONSIBILITY OF THE CONTRACTOR TO VERIFY BOTH HORIZONTALLY AND VERTICALLY THE LOCATION OF ALL EXISTING UTILITIES AND UNDERGROUND FACILITIES PRIOR TO CONSTRUCTION, TO TAKE NECESSARY PRECAUTIONS IN ORDER TO PROTECT ALL FACILITIES ENCOUNTERED. THE CONTRACTOR SHALL PRESERVE AND PROTECT ALL EXISTING UTILITIES FROM DAMAGE DURING CONSTRUCTION.



**Plant Legend**

-  OVERSTORY TREES
-  EVERGREEN SHRUBS
-  TURF - 419 TIFF BERMUDA SOD
-  BARK MULCH

**Preliminary Plant Schedule**

QUANTITY	CODE	COMMON/BOTANICAL NAME	SIZE/ROOT	SPACING O.C.	HEIGHT AT MATURITY
<b>TREES - OVERSTORY</b>					
16	CEE	CEDAR ELM / ULMUS CRASSIFOLIA	4" CAL/ 12' HT. B&B	AS SHOWN	H 60'-70' W 50'-60'
31	LIO	LIVE OAK / QUERCUS VIRGINIANA	4" CAL/ 12' HT. B&B	AS SHOWN	H 40'-80' W 60'-100'
24	SHO	SHUMARD OAK / QUERCUS SHUMARDII	4" CAL/ 12' HT. B&B	AS SHOWN	H 40'-60' W 50'-70'
8	CHO	CHINQUAPIN OAK / QUERCUS MUEHLBERGII	4" CAL/ 12' HT. B&B	AS SHOWN	H 50'-80' W 50'-70'
17	CAM	CADD O MAPLE / ACER SACCHARUM 'JOHN PAIR'	4" CAL/ 12' HT. B&B	AS SHOWN	H 30'-45' W 30'-40'
28	BTM	BIGTOOTH MAPLE / ACER GRANDIDENTATUM	4" CAL/ 12' HT. B&B	AS SHOWN	H 20'-30' W 20'-30'
18	AGG	AUTUMN GOLD GINKGO / GINKGO BILOBA 'AUTUMN GOLD'	4" CAL/ 12' HT. B&B	AS SHOWN	H 25'-30' W 40'-50'
<b>SHRUBS - EVERGREEN</b>					
100	NSH	NELLIE R. STEVENS HOLLIE / ILEX X 'NELLIE R. STEVENS'	#5 CONT./ 36" HT. MIN.	6'-0" O.C.	H 15'-25' W 8'-12'

NOTE: QUANTITIES ON PLAN SUPERSEDE LIST QUANTITIES IN THE EVENT OF A DISCREPANCY.

N:\0023657\0111 PROJECT DATA\DWG\CIVIL\0023657-01-C-LP.DWG

DESIGNED: AWS	INITIAL ISSUE: 02-17-2020
CHECKED: RPP	REVISIONS:
DRAWN: WTW	
HORIZONTAL SCALE: 40'	
VERTICAL SCALE: 8' or 4'	

PREPARED FOR:  
**ENCORE WIRE CORPORATION**  
1329 MILLWOOD ROAD  
MCKINNEY, TEXAS 75069



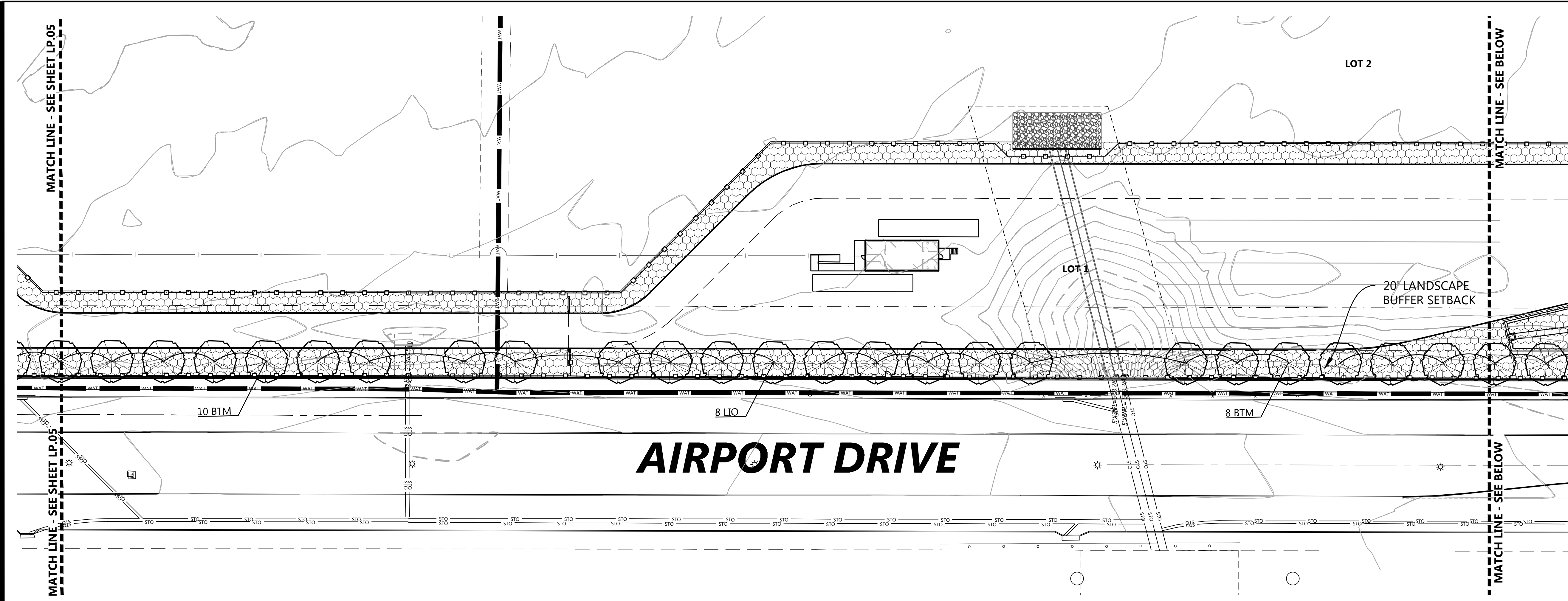
**ENCORE WIRE SERVICE CENTER**  
MCKINNEY, TEXAS

**Westwood**  
Phone (214) 473-4640 2740 Dallas Parkway, Suite 280  
Toll Free (888) 937-5150 Plano, TX 75093  
westwoodps.com  
Westwood Professional Services, Inc.  
TYPE FIRM REGISTRATION NO. F-11756  
TSPS FIRM REGISTRATION NO. 10074302

SHEET NUMBER:  
**LP.05**  
LANDSCAPE PLAN  
PROJECT NUMBER: 0023657.01 DATE: 02-17-2020

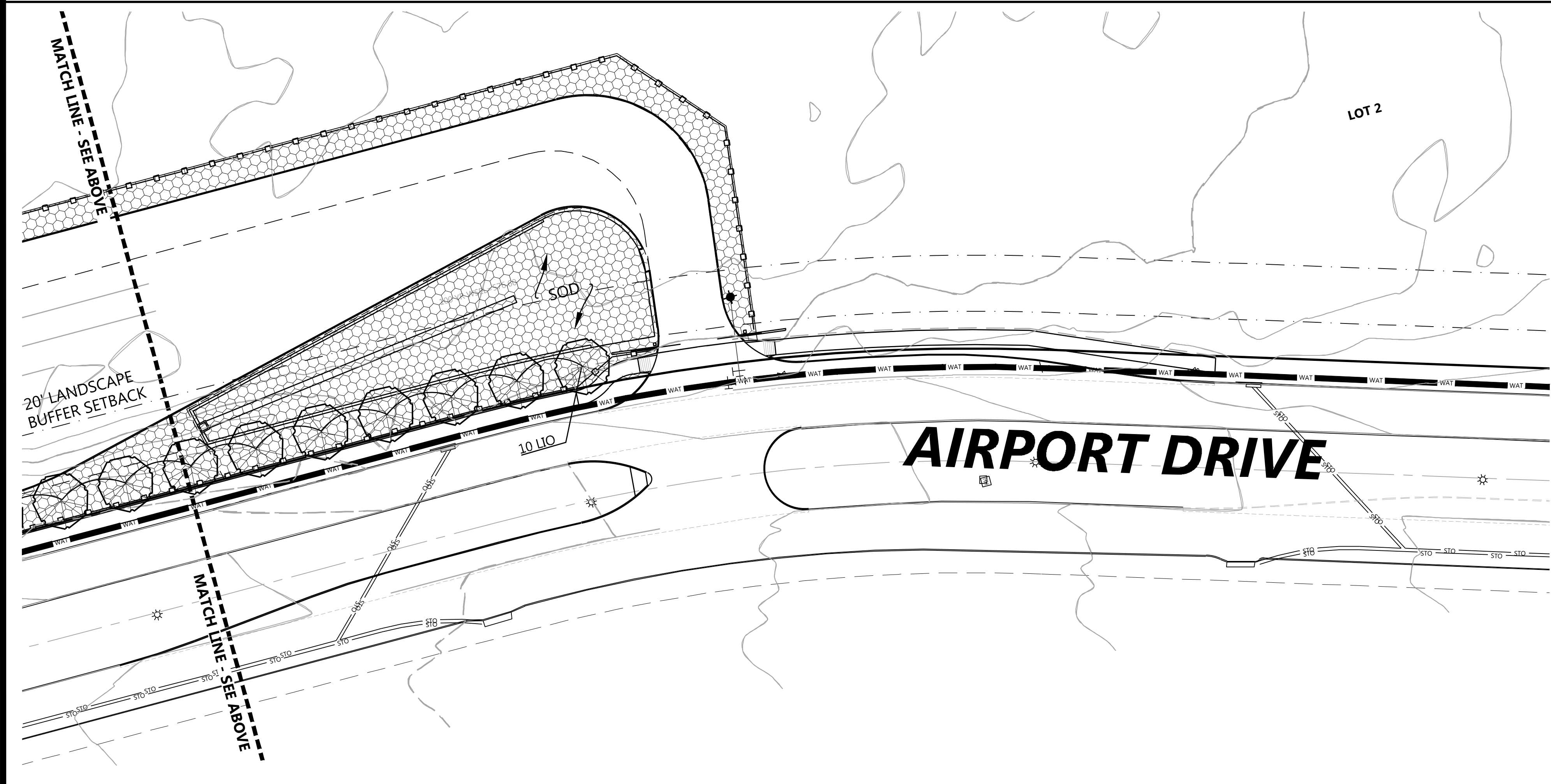
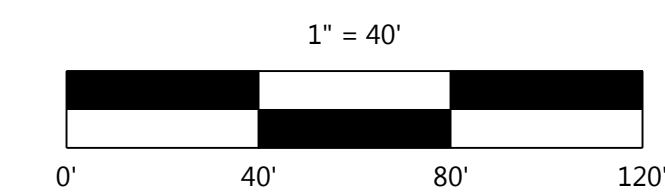
ENCORE WIRE SERVICE CENTER






VICINITY MAP  
NOT TO SCALE

**CAUTION !!!**  
EXISTING UTILITIES  
EXISTING UTILITIES AND UNDERGROUND FACILITIES INDICATED ON THESE PLANS HAVE BEEN LOCATED FROM REFERENCE INFORMATION. IT SHALL BE THE RESPONSIBILITY OF THE CONTRACTOR TO VERIFY BOTH HORIZONTALLY AND VERTICALLY THE LOCATION OF ALL EXISTING UTILITIES AND UNDERGROUND FACILITIES PRIOR TO CONSTRUCTION. TO TAKE NECESSARY PRECAUTIONS IN ORDER TO PROTECT ALL FACILITIES ENCOUNTERED. THE CONTRACTOR SHALL PRESERVE AND PROTECT ALL EXISTING UTILITIES FROM DAMAGE DURING CONSTRUCTION.



**Plant Legend**

-  OVERSTORY TREES
-  EVERGREEN SHRUBS
-  TURF - 419 TIFF BERMUDA SOD
-  BARK MULCH

**Preliminary Plant Schedule**

QUANTITY	CODE	COMMON/BOTANICAL NAME	SIZE/ROOT	SPACING O.C.	HEIGHT AT MATURITY
<b>TREES - OVERSTORY</b>					
16	CEE	CEDAR ELM / ULMUS CRASSIFOLIA	4" CAL / 12' HT. B&B	AS SHOWN	H 60'-70' W 50'-60'
31	LIO	LIVE OAK / QUERCUS VIRGINIANA	4" CAL / 12' HT. B&B	AS SHOWN	H 40'-80' W 60'-100'
24	SHO	SHUMARD OAK / QUERCUS SHUMARDII	4" CAL / 12' HT. B&B	AS SHOWN	H 40'-60' W 50'-70'
8	CHO	CHINQUAPIN OAK / QUERCUS MUHLENBERGII	4" CAL / 12' HT. B&B	AS SHOWN	H 50'-80' W 50'-70'
17	CAM	CADDIS MAPLE / ACER SACCHARUM 'JOHN PAIR'	4" CAL / 12' HT. B&B	AS SHOWN	H 30'-45' W 30'-40'
28	BTM	BIGTOOTH MAPLE / ACER GRANDIDENTATUM	4" CAL / 12' HT. B&B	AS SHOWN	H 20'-30' W 20'-30'
18	AGG	AUTUMN GOLD GINKGO / GINKGO BILOBA 'AUTUMN GOLD'	4" CAL / 12' HT. B&B	AS SHOWN	H 25'-30' W 40'-50'
<b>SHRUBS - EVERGREEN</b>					
100	NSH	NELLIE R. STEVENS HOLLIE / ILEX X 'NELLIE R. STEVENS'	#5 CONT / 36" HT. MIN.	6'-0" O.C.	H 15'-25' W 8'-12'

NOTE: QUANTITIES ON PLAN SUPERSEDE LIST QUANTITIES IN THE EVENT OF A DISCREPANCY.

DESIGNED:	AWS
CHECKED:	RPP
DRAWN:	WTW
HORIZONTAL SCALE:	40'
VERTICAL SCALE:	8' or 4'

INITIAL ISSUE:	02-17-2020
REVISIONS:	

PREPARED FOR:  
**ENCORE WIRE CORPORATION**  
1329 MILLWOOD ROAD  
MCKINNEY, TEXAS 75069



**ENCORE WIRE SERVICE CENTER**  
MCKINNEY, TEXAS

**Westwood**  
Phone (214) 473-4640 2740 Dallas Parkway, Suite 280  
Toll Free (888) 937-5150 Plano, TX 75093  
westwoodps.com  
Westwood Professional Services, Inc.  
TSPS FIRM REGISTRATION NO. F-11756  
TSPS FIRM REGISTRATION NO. 10074302

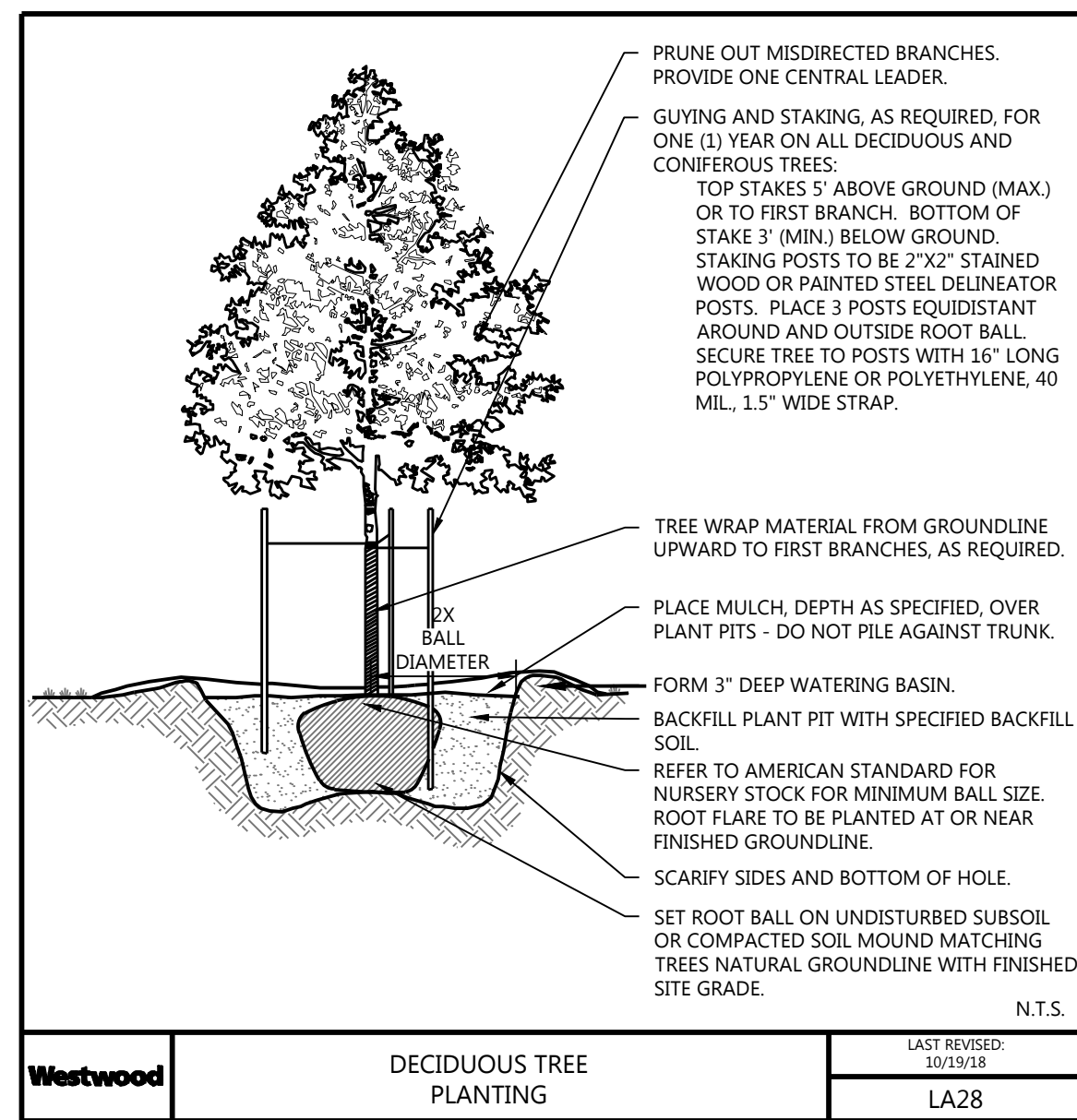
LANDSCAPE PLAN  
PROJECT NUMBER: 0023657.01  
SHEET NUMBER:  
**LP.06**  
DATE: 02-17-2020

ENCORE WIRE SERVICE CENTER



# PLANTING NOTES

- CONTRACTOR SHALL CONTACT COMMON GROUND ALLIANCE AT 811 OR CALL811.COM TO VERIFY LOCATIONS OF ALL UNDERGROUND UTILITIES PRIOR TO INSTALLATION OF ANY PLANTS OR LANDSCAPE MATERIAL.
- ACTUAL LOCATION OF PLANT MATERIAL IS SUBJECT TO FIELD AND SITE CONDITIONS.
- NO PLANTING WILL BE INSTALLED UNTIL ALL GRADING AND CONSTRUCTION HAS BEEN COMPLETED IN THE IMMEDIATE AREA.
- ALL SUBSTITUTIONS MUST BE APPROVED BY THE LANDSCAPE ARCHITECT PRIOR TO SUBMISSION OF ANY BID AND/OR QUOTE BY THE LANDSCAPE CONTRACTOR.
- CONTRACTOR SHALL PROVIDE TWO YEAR GUARANTEE OF ALL PLANT MATERIALS. THE GUARANTEE BEGINS ON THE DATE OF THE LANDSCAPE ARCHITECT'S OR OWNER'S WRITTEN ACCEPTANCE OF THE INITIAL PLANTING. REPLACEMENT PLANT MATERIAL SHALL HAVE A ONE YEAR GUARANTEE COMMENCING UPON PLANTING.
- ALL PLANTS TO BE SPECIMEN GRADE, TEXAS-GROWN AND/OR HARDY. SPECIMEN GRADE SHALL ADHERE TO, BUT IS NOT LIMITED BY, THE FOLLOWING STANDARDS:  
ALL PLANTS SHALL BE FREE FROM DISEASE, PESTS, WOUNDS, SCARS, ETC.  
ALL PLANTS SHALL BE FREE FROM NOTICEABLE GAPS, HOLES, OR DEFORMITIES.  
ALL PLANTS SHALL BE FREE FROM BROKEN OR DEAD BRANCHES.  
ALL PLANTS SHALL HAVE HEAVY, HEALTHY BRANCHING AND LEAFING.  
CONIFEROUS TREES SHALL HAVE AN ESTABLISHED MAIN LEADER AND A HEIGHT TO WIDTH RATIO OF NO LESS THAN 5:3.
- PLANTS TO MEET AMERICAN STANDARD FOR NURSERY STOCK (ANSI Z60.1-2014 OR MOST CURRENT VERSION) REQUIREMENTS FOR SIZE AND TYPE SPECIFIED.
- PLANTS TO BE INSTALLED AS PER TXLA & ANSI STANDARD PLANTING PRACTICES.
- PLANTS SHALL BE IMMEDIATELY PLANTED UPON ARRIVAL AT SITE. PROPERLY HEEL-IN MATERIALS IF NECESSARY; TEMPORARY ONLY.
- PRIOR TO PLANTING, FIELD VERIFY THAT THE ROOT COLLAR/ROOT FLAIR IS LOCATED AT THE TOP OF THE BALLED & BURLAP TREE. IF THIS IS NOT THE CASE, SOIL SHALL BE REMOVED DOWN TO THE ROOT COLLAR/ROOT FLAIR. WHEN THE BALLED & BURLAP TREE IS PLANTED, THE ROOT COLLAR/ROOT FLAIR SHALL BE EVEN OR SLIGHTLY ABOVE FINISHED GRADE.
- OPEN TOP OF BURLAP ON BB MATERIALS; REMOVE POT ON POTTED PLANTS; SPLIT AND BREAK APART PEAT POTS.
- PRUNE PLANTS AS NECESSARY - PER STANDARD NURSERY PRACTICE AND TO CORRECT POOR BRANCHING OF EXISTING AND PROPOSED TREES.
- WRAP ALL SMOOTH-BARKED TREES - FASTEN TOP AND BOTTOM. REMOVE BY APRIL 1ST.
- STAKING OF TREES AS REQUIRED; REPOSITION, PLUMB AND STAKE IF NOT PLUMB AFTER ONE YEAR.
- THE NEED FOR SOIL AMENDMENTS SHALL BE DETERMINED UPON SITE SOIL CONDITIONS PRIOR TO PLANTING. LANDSCAPE CONTRACTOR SHALL NOTIFY LANDSCAPE ARCHITECT FOR THE NEED OF ANY SOIL AMENDMENTS.
- BACKFILL SOIL AND TOPSOIL TO ADHERE TO MN/DOT STANDARD SPECIFICATION 3877 (SELECT TOPSOIL BORROW) AND TO BE EXISTING TOP SOIL FROM SITE FREE OF ROOTS, ROCKS LARGER THAN ONE INCH, SUBSOIL DEBRIS, AND LARGE WEEDS UNLESS SPECIFIED OTHERWISE. MINIMUM 4" DEPTH TOPSOIL FOR ALL LAWN GRASS AREAS AND 12" DEPTH TOPSOIL FOR TREE, SHRUBS, AND PERENNIALS.
- MULCH TO BE AT ALL TREE, SHRUB, PERENNIAL, AND MAINTENANCE AREAS. TREE AND SHRUB PLANTING BEDS SHALL HAVE 4" DEPTH OF SHREDDED HARDWOOD MULCH. SHREDDED HARDWOOD MULCH TO BE USED AROUND ALL PLANTS WITHIN TURF AREAS. PERENNIAL AND ORNAMENTAL GRASS BEDS SHALL HAVE 2" DEPTH SHREDDED HARDWOOD MULCH. MULCH TO BE FREE OF DELETERIOUS MATERIAL AND COLORED RED, OR APPROVED EQUAL ROCK MULCH TO BE BUFF LIMESTONE, 1 1/2" TO 3" DIAMETER, AT MINIMUM 3" DEPTH, OR APPROVED EQUAL ROCK MULCH TO BE ON COMMERCIAL GRADE FILTER FABRIC, BY TYPAR, OR APPROVED EQUAL WITH NO EXPOSURE. MULCH AND FABRIC TO BE APPROVED BY OWNER PRIOR TO INSTALLATION. MULCH TO MATCH EXISTING CONDITIONS (WHERE APPLICABLE).
- EDGING TO BE COMMERCIAL GRADE VALLEY-VIEW BLACK DIAMOND (OR EQUAL) POLY EDGING OR SPADED EDGE, AS INDICATED. POLY EDGING SHALL BE PLACED WITH SMOOTH CURVES AND STAKED WITH METAL SPIKES NO GREATER THAN 4 FOOT ON CENTER WITH BASE OF TOP BEAD AT GRADE, FOR MOWERS TO CUT ABOVE WITHOUT DAMAGE. UTILIZE CURBS AND SIDEWALKS FOR EDGING WHERE POSSIBLE. SPADED EDGE TO PROVIDE V-SHAPED DEPTH AND WIDTH TO CREATE SEPARATION BETWEEN MULCH AND GRASS. INDIVIDUAL TREE, SHRUB, OR RAIN-GARDEN BEDS TO BE SPADED EDGE, UNLESS NOTED OTHERWISE. EDGING TO MATCH EXISTING CONDITIONS (WHERE APPLICABLE).
- ALL DISTURBED AREAS TO BE SODDED OR SEEDED, UNLESS OTHERWISE NOTED. PARKING LOT ISLANDS TO BE SODDED WITH SHREDDED HARDWOOD MULCH AROUND ALL TREES AND SHRUBS. SOD TO BE STANDARD MINNESOTA GROWN AND HARDY BLUEGRASS MIX, FREE OF LAWN WEEDS. ALL TOPSOIL AREAS TO BE RAKED TO REMOVE DEBRIS AND ENSURE DRAINAGE. SLOPES OF 3:1 OR GREATER SHALL BE STAKED. SEED AS SPECIFIED AND PER MN/DOT SPECIFICATIONS. IF NOT INDICATED ON LANDSCAPE PLAN, SEE EROSION CONTROL PLAN.
- PROVIDE IRRIGATION TO ALL PLANTED AREAS ON SITE. IRRIGATION SYSTEM TO BE DESIGN/BUILD BY LANDSCAPE CONTRACTOR. LANDSCAPE CONTRACTOR TO PROVIDE SHOP DRAWINGS TO LANDSCAPE ARCHITECT FOR APPROVAL PRIOR TO INSTALLATION OF IRRIGATION SYSTEM. CONTRACTOR TO PROVIDE OPERATION MANUALS, AS-BUILT PLANS, AND NORMAL PROGRAMMING. SYSTEM SHALL BE WINTERIZED AND HAVE SPRING STARTUP DURING FIRST YEAR OF OPERATION. SYSTEM SHALL HAVE ONE-YEAR WARRANTY ON ALL PARTS AND LABOR. ALL INFORMATION ABOUT INSTALLATION AND SCHEDULING CAN BE OBTAINED FROM THE GENERAL CONTRACTOR.
- CONTRACTOR SHALL PROVIDE NECESSARY WATERING OF PLANT MATERIALS UNTIL THE PLANT IS FULLY ESTABLISHED OR IRRIGATION SYSTEM IS OPERATIONAL. OWNER WILL NOT PROVIDE WATER FOR CONTRACTOR.
- REPAIR, REPLACE, OR PROVIDE SOD/SEED AS REQUIRED FOR ANY ROADWAY BOULEVARD AREAS ADJACENT TO THE SITE DISTURBED DURING CONSTRUCTION.
- REPAIR ALL DAMAGE TO PROPERTY FROM PLANTING OPERATIONS AT NO COST TO OWNER.



Westwood	DECIDUOUS TREE PLANTING	LAST REVISED
		LA28

DESIGNED:	AWS	INITIAL ISSUE:	02-17-2020
CHECKED:	RPP	REVISIONS:	
DRAWN:	WTW		
HORIZONTAL SCALE:	###		
VERTICAL SCALE:	## or ##		

PREPARED FOR:

**ENCORE WIRE CORPORATION**

1329 MILLWOOD ROAD  
MCKINNEY, TEXAS 75069

**ENCORE WIRE SERVICE CENTER**

MCKINNEY, TEXAS

Phone (214) 473-4640 2740 Dallas Parkway, Suite 280  
Toll Free (888) 937-5150 Plano, TX 75093  
westwoodps.com

Westwood Professional Services, Inc.  
TBPB FIRM REGISTRATION NO. F-11756  
TBPB FIRM REGISTRATION NO. 10074302

LANDSCAPE DETAILS

SHEET NUMBER: **LP.07**

PROJECT NUMBER: 0023657.01 DATE: 02-17-2020