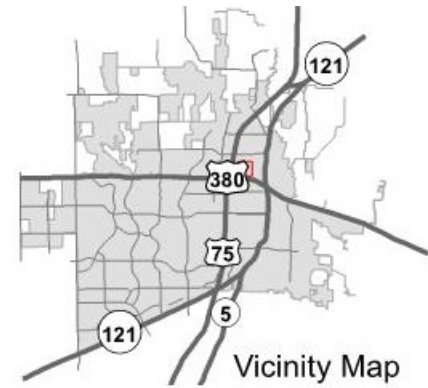
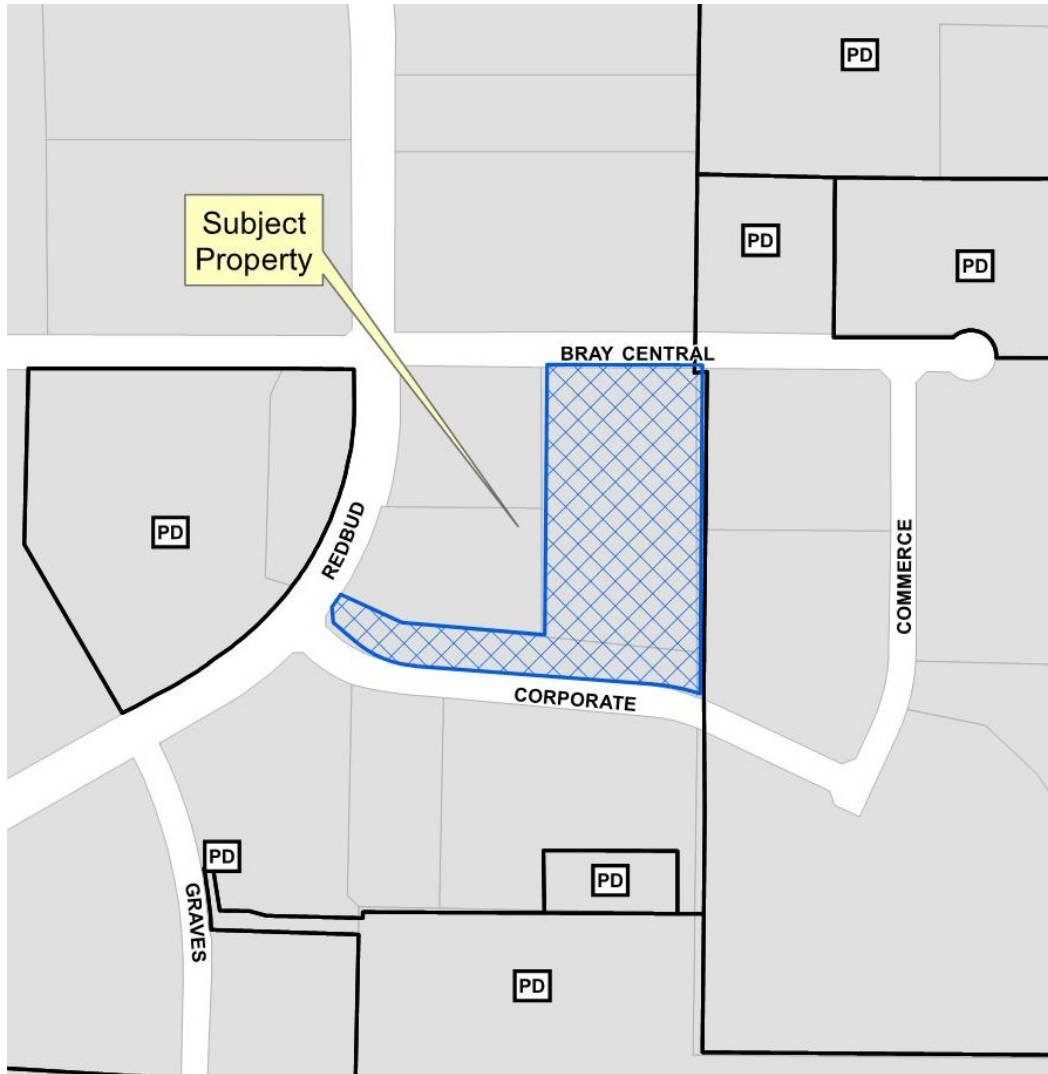


Bray Central Two Addition Minor Replat

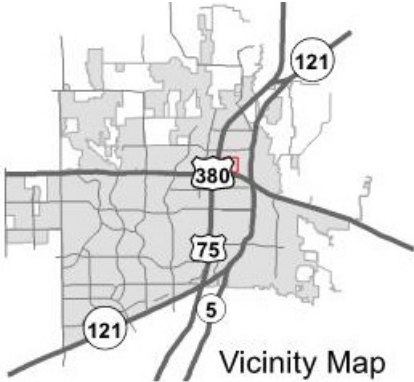
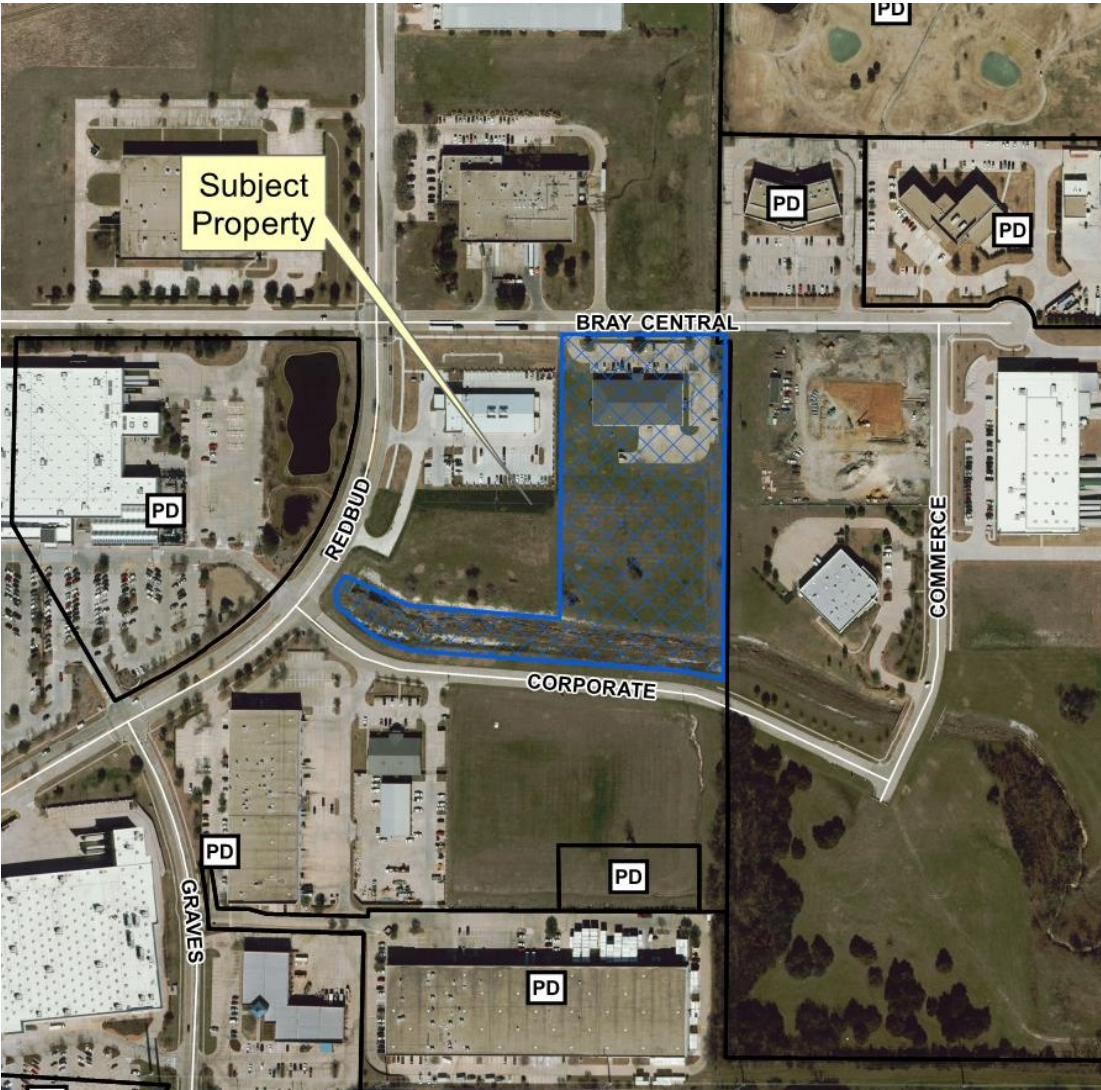
18-0139MRP



Location Map

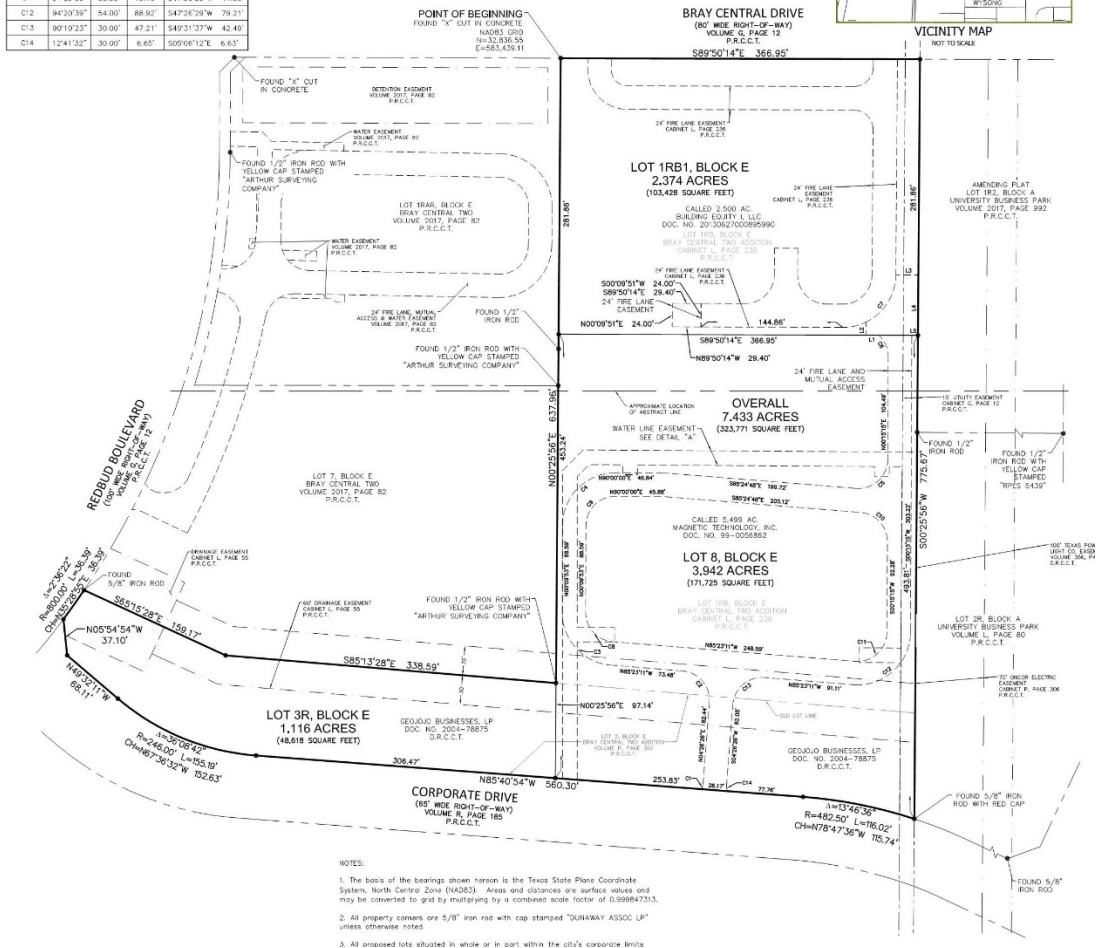
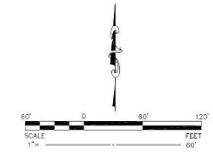


Aerial Exhibit



Curve Table				
Curve Number	Central Angle	Radius	Arc Length	Chord Bearing and Distance
C1	123°1'50"	30.00'	6.56'	N12°51'44"E 6.55'
C2	89°49'37"	30.00'	47.03'	N49°26'23"W 43.34'
C3	89°37'31"	54.00'	80.70'	N42°34'26"W 73.40'
C4	89°44'40"	54.00'	84.58'	N49°07'37"E 76.20'
C5	94°19'58"	30.00'	49.38'	N47°25'14"E 44.00'
C6	47°38'25"	30.00'	24.94'	N23°33'37"W 24.23'
C7	63°41'57"	54.00'	60.04'	N37°16'55"E 56.89'
C8	89°39'01"	30.00'	44.85'	N42°33'41"W 40.79'
C9	89°42'26"	30.00'	46.97'	N49°08'32"E 42.32'
C10	89°49'04"	30.00'	44.88'	S42°34'46"E 40.79'
C11	94°29'59"	30.00'	49.40'	S47°26'25"W 44.00'
C12	94°29'59"	54.00'	86.92'	S47°16'29"W 79.21'
C13	90°19'23"	30.00'	47.21'	S49°31'37"W 42.40'
C14	12°41'32"	30.00'	6.65'	S09°06'12"E 6.63'

Line Table		
Line Number	Bearing	Distance
L1	N89°50'14"W	13.08'
L2	N00°25'56"E	13.34'
L3	S89°50'14"E	23.00'
L4	S02°25'56"W	61.61'
L5	N89°50'14"W	6.21'



NOTES:

- The basis of the bearings shown hereon is the Texas State Plane Coordinate System, North Central Zone (NAD83). Areas and distances are surface values and may be converted to grid by multiplying by a combined scale factor of 0.999847313.
- All property corners are 5/8" iron rod with cap stamped "DUNAWAY ASSOC LP" unless otherwise noted.
- All proposed lots situated in whole or in part within the city's corporate limits.

Proposed Minor Replat



