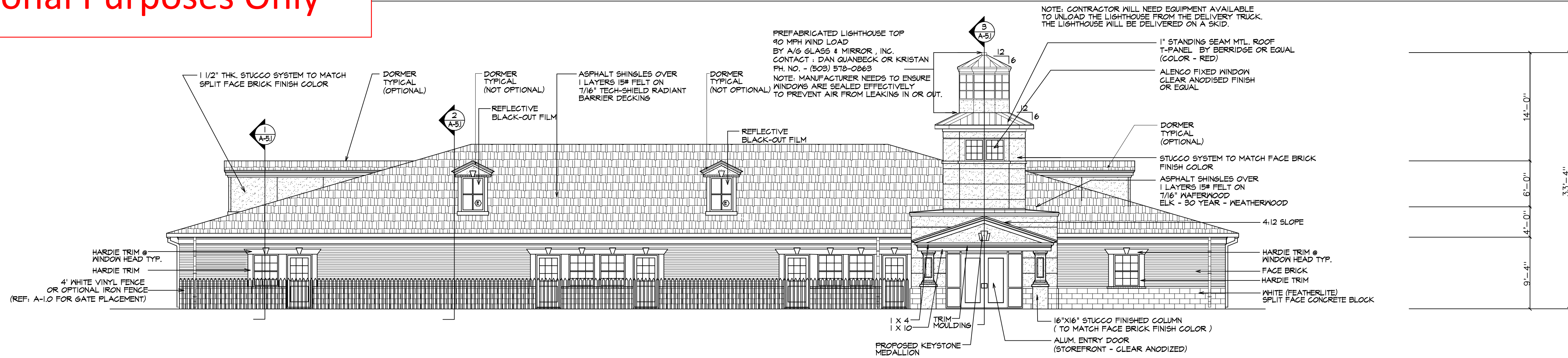


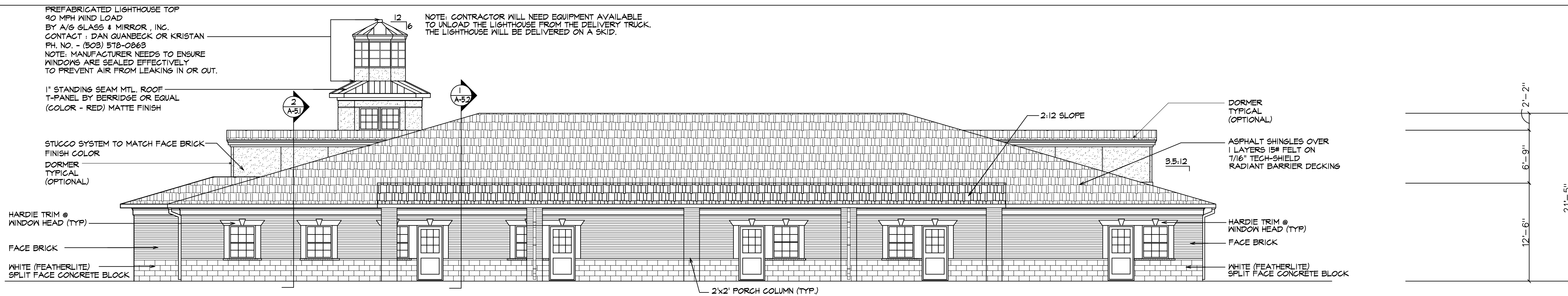
For Informational Purposes Only



FRONT ELEVATION

SCALE: 1/8"=1'-0"

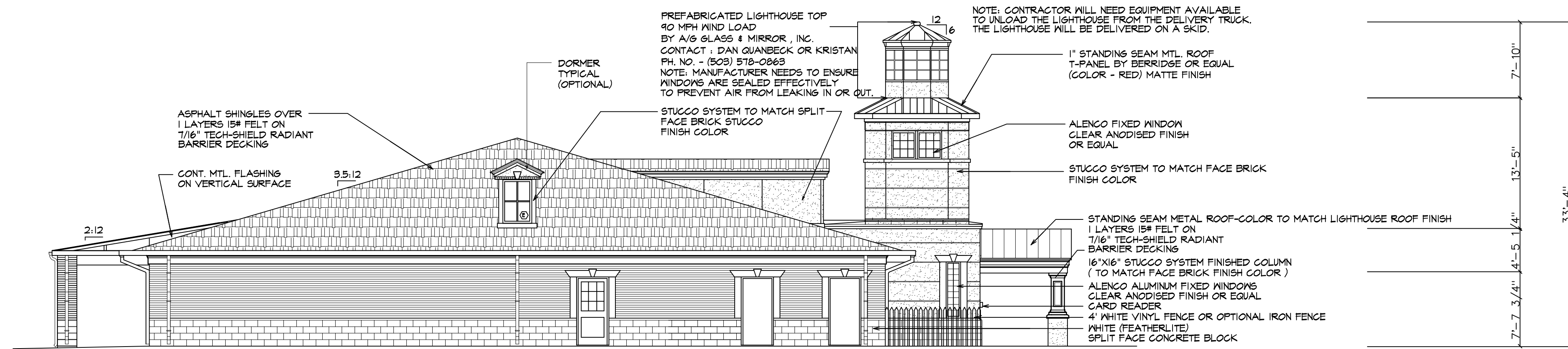
1



REAR ELEVATION

SCALE: 1/8"=1'-0"

2

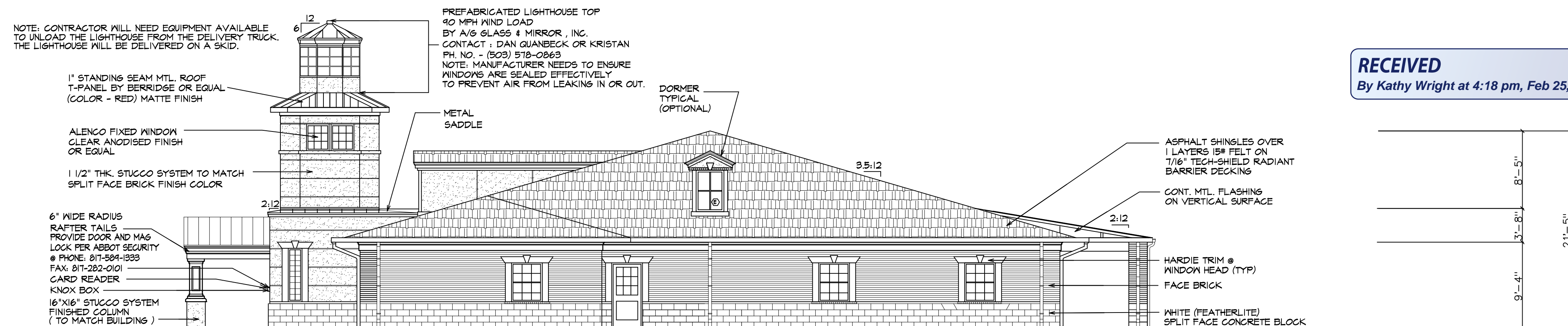


LEFT SIDE ELEVATION

SCALE: 1/8"=1'-0"

3

- NOTES:
1. PROVIDE ACME-- DUSAN MILL, KING SIZE OR MODULAR AS DIRECTED BY CHILDRENS LIGHTHOUSE. CONTRACTOR SHALL ADJUST DETAILS ACCORDING TO THE SIZE OF BRICK USED.
 2. ALL DORMER WINDOWS TO BE COVERED WITH REFLECTIVE BLACK-OUT FILM TO BE SELECTED BY OWNER.
 3. PROVIDE EXTERIOR LIGHTING AT ENTRY AS SEAGULL LIGHTING ITEM 8427-15E SINGLE LIGHT PIEDMONT FLOURESCENT WALL LANTERN
www.seagullighting.com
WALL LANTERNS OUTDOOR LIGHTING PG. 23
 4. STANDING SEAM METAL ROOF OPTION- ALL GABLES, EAVES, GUTTERS, RIDGE ROYS, TRANSITIONS, TRANSITION TRIM AND VALLEY FLASHING TO BE FROM SAME MANUFACTURER. COLOR TO BE NEUTRAL, AND SUBMITTED TO FRANCHISE HEADQUARTERS FOR APPROVAL.
 5. CONTRACTOR WILL NEED EQUIPMENT AVAILABLE TO UNLOAD THE LIGHTHOUSE FROM THE DELIVERY TRUCK. THE LIGHTHOUSE WILL BE DELIVERED ON A SKID.
 6. CONTRACTOR WILL PROVIDE ROOFING VENTILATION OPTIONS. CHILDRENS LIGHTHOUSE FRANCHISE IS TO APPROVE SELECTION.



RIGHT SIDE ELEVATION

SCALE: 1/8"=1'-0"

4

PROTOTYPE FACILITY FOR
CHILDRENS LIGHTHOUSE



RECEIVED
By Kathy Wright at 4:18 pm, Feb 25, 2013