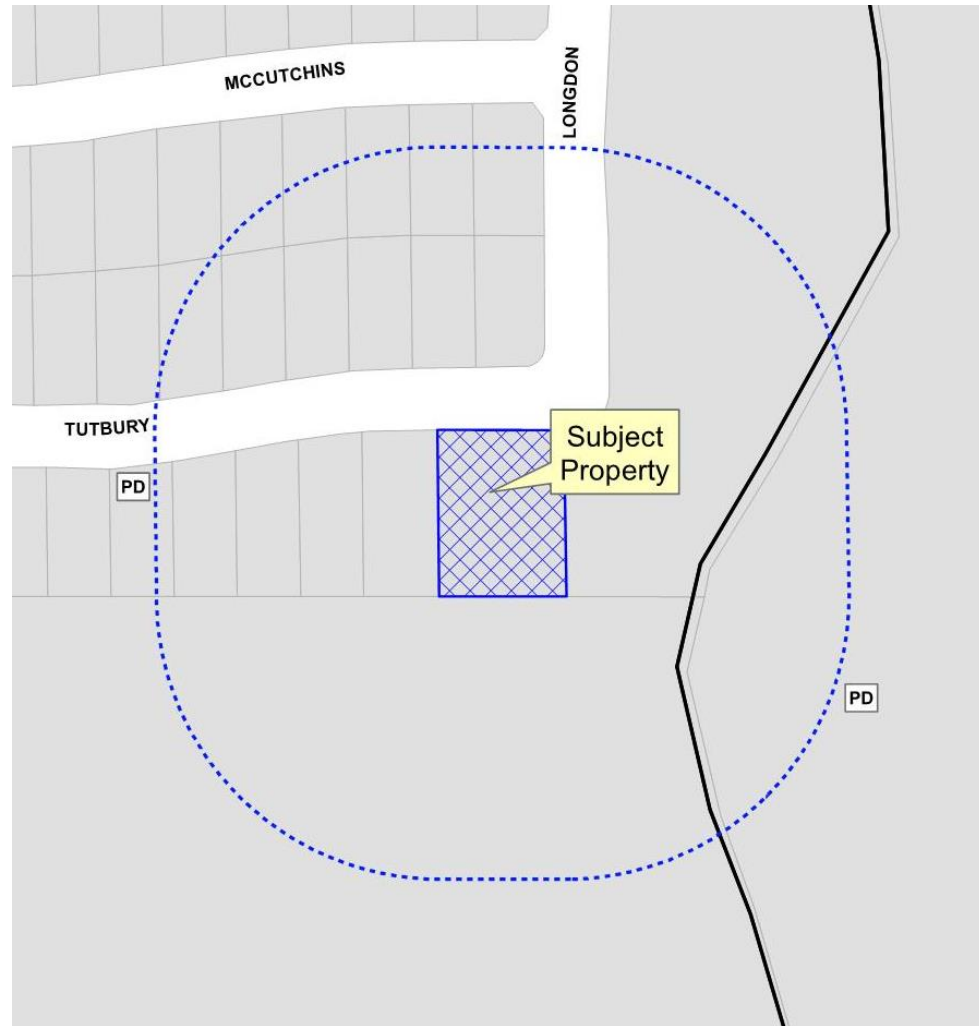


Creekside at Craig Ranch PH 2
Minor Replat
16-313MRP

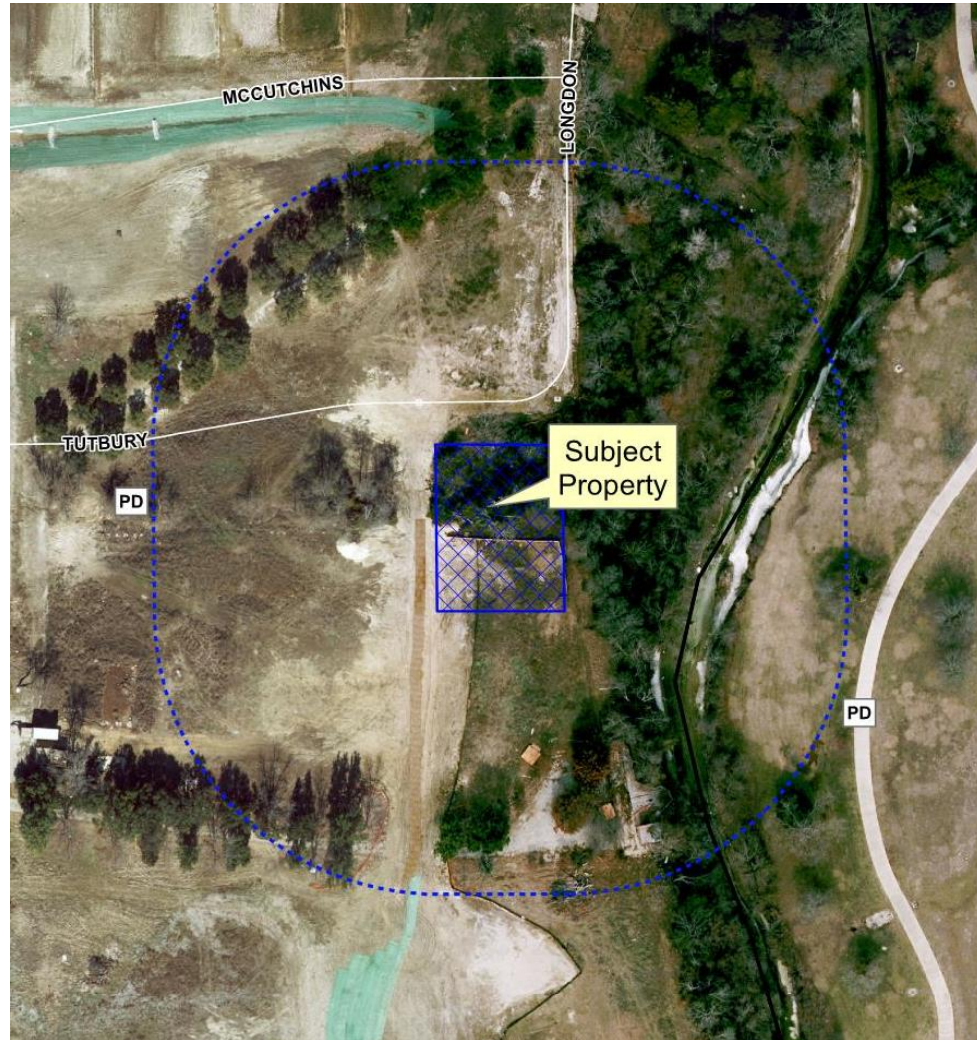


- MONEY MAGAZINE 2014 -

Location Map



Aerial Exhibit



Proposed Minor Replat

- NOTES:
1. BEARING SHOWN HEREON ARE BASED ON TEXAS STATE PLANE COORDINATE SYSTEM, TEXAS NORTH CENTRAL ZONE (4202), NORTH AMERICAN DATUM OF 1983, DIRECTIONAL CONTROL ESTABLISHED BETWEEN <CM 1> & <CM 2> HAVING A BEARING AND DISTANCE OF S 0°29'24"E, 130.18'
 2. ALL LOT CORNERS SHALL BE MONUMENTED WITH A 1/2" INCH IRON ROD WITH A YELLOW PLASTIC CAP STAMPED "DAA"
 3. ALL PROPOSED LOTS SITUATED IN WHOLE OR IN PART WITHIN THE CITY'S CORPORATE LIMITS COMPLY WITH THE MINIMUM SIZE REQUIREMENTS OF THE GOVERNING ZONING DISTRICT AND THE REQUIREMENTS OF THE SUBDIVISION ORDINANCE.

