

PLANTING SCHEDULE				
COUNT	SYM./ITEM	BOTANICAL NAME	COMMON NAME	SPECIFICATIONS
TREES				
17	QS	Quercus shumardii	Shumard Oak	4" caliper min., 12' min. height, single trunk, matching, full branching.
10	UC	Ulmus parvifolia	Lacebark Elm	4" caliper min., 12' min. height, single trunk, matching, full branching.
SHRUBS				
130	IN	Ilex x 'Nellie R. Stevens'	Nellie R. Stevens Holly	7 gal. min., 3' height min., matching, full to ground, spaced 3' O.C..
PERENNIALS / GROUNDCOVERS / MISC.				
10,553 SY	LAWN (SOD)	Buchloe dactyloides	Prairie Buffalo Grass Sod	1 lbs. per 2,000 SF seed. (94,975/9-10,553 SY) Base Bid Rolled sod w/ tight spacing and sand filled joints. Finished sod to be free of weeds. Provide Prairie buffalo grass sod by King Ranch Turfgrass, or approved equal.
10,553 SY	ALT. BID LAWN (SEED)	Seed Mix Buchloe dactyloides Bouteloua gracilis Hilaria belangari	Thunder Turf Seed Mix	Alternate Bid Apply Seed at 10.2 lbs/3,400 SF. Provide full coverage within 60 days of planting. Provide Thunder Turf seed mix by Native American Seed Co. or approved equal.

NOTE: CONTRACTOR TO SELECT PLANT MATERIAL BASED ON HEIGHT AND WIDTH CALLED OUT ABOVE. POT SIZE CALLED OUT IS A MINIMUM REQUIREMENT.

LANDSCAPE REGULATION - MCKINNEY, TX

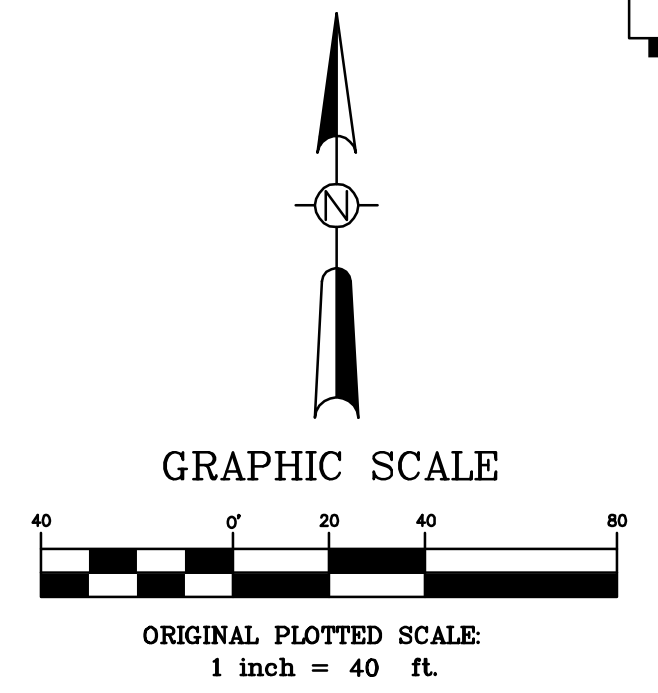
TOTAL SITE AREA: 125,017 SF
 PERMANENT LANDSCAPE AREA: 112,720 SF
 STREET YARD AREA: 8,026 SF

LANDSCAPE CODE REQUIREMENTS:	REQ.	PROV.
15% of Street Yard shall be permanent landscape area (8,026 SF * .15 = 1,204 SF)	1,204 SF	7,430 SF
10% minimum of entire site devoted to living landscape (125,017 SF * .10 = 12,501 SF)	12,501 SF	112,720 SF
One canopy tree within the setback per 40 LF of Street Frontage (319 LF/40 = 8)	8 TREES	8 TREES
If site is adjacent to single-family or duplex residential, more intensive land use to provide landscape area of 10 FT in width and 1 canopy tree per 40 LF		
East side yard: 355 LF/40 = 9 North side yard: 371 LF/40 = 9	9 TREES 9 TREES	8 TREES 9 TREES
Minimum 50% of required trees to be shade trees	50%	100%
Minimum of one tree within 65 FT of each space (One parking space)	YES	YES
A landscape island shall be located at the terminus of each parking row and contain at least one canopy tree	YES	YES*
Use of approved plants	YES	YES

NOTE:
 * The water line and tank location prevent placement of two terminus trees on either side of the parking space. To mitigate, two trees were placed in close proximity to the same space.

LEGEND

- 8' ORNAMENTAL (PAINTED ALUMINUM) FENCE W/ MASONRY COLUMNS, AND FLAT TOP ROLL (NO SPEAR TOPS) SEE DET. 4 & 5, SHEET L-02
- 8' CHAIN LINK FENCE SEE DET. 1, SHEET L-04



STOP!
 CALL BEFORE YOU DIG
 DIG TESS
 1-800-DIG-TESS
 (@ least 72 hours prior to digging)

RECEIVED
 By Karen McCutcheon at 8:29 am, Mar 14, 2013

RECEIVED PAPER COPIES 3/13/13 KMC

Kimley-Horn and Associates, Inc.
 12750 West Loop, Suite 500, Dallas, TX 75240 (972) 776-1355
 12750 West Loop, Suite 500, Dallas, TX 75240 (972) 776-1355

No.	Revision	By	Date

PRELIMINARY
 FOR REVIEW ONLY
 Not for construction or permit purposes.
 Kimley-Horn and Associates, Inc.
 R.L.A. JOHN A. FELDER
 L.A. No. 2344 Date: MARCH 2013

**CH-B Trinity Falls, LP
 Trinity Falls 3.0 MG Elevated
 Water Storage Tank**

LANDSCAPE PLAN

DATE:	MARCH 2013
DESIGN:	AD
DRAWN:	AD
CHECKED:	JF
KHA NO.:	068150007

K:\AC-L\LP\Collin County LD Support Review\Trinity Falls EST\DWG\1-SET.mxd.dwg