

SITE LANDSCAPE:

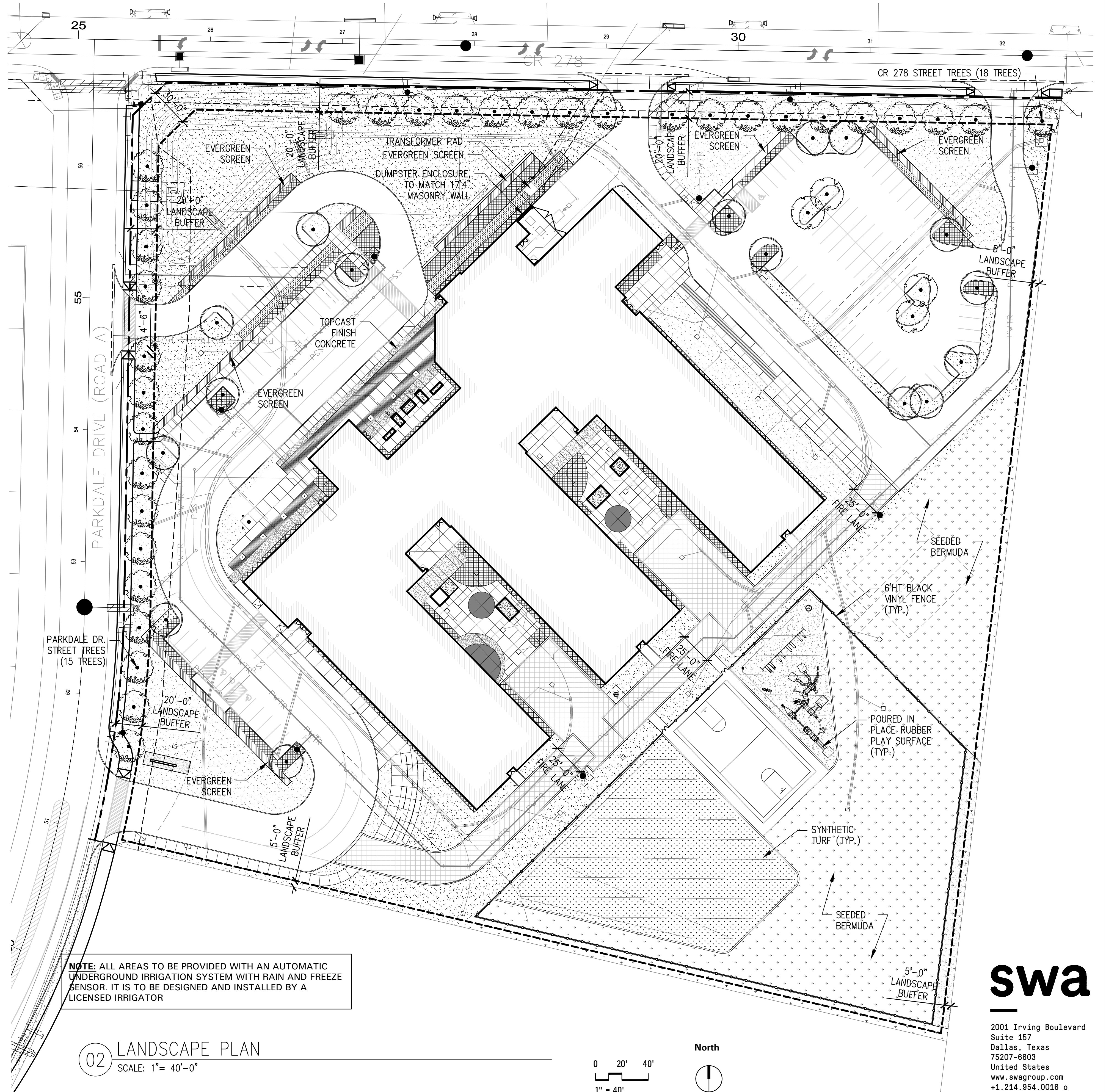
STREET YARD REQUIREMENTS (434,872 SF):	REQUIRED	PROVIDED
15% OF STREET YARD TO BE LANDSCAPE		
CR278 (17,239 SF)	2,583 SF (15%)	15,713 SF (91%)
PARKDALE DRIVE (13,232 SF)	1,984 SF (15%)	9,757 SF (73%)
10% OF TOTAL SITE TO BE LANDSCAPE	43,487 SF (10%)	171,071 SF (39%)
STREET TREES: (1 TREE/40'-0" OF STREET FRONTAGE) (36" HT. PARKING SCREEN)		
CR278 (636'-0")	(18) TREES	(18) TREES
PARKDALE DRIVE (501'-0")	(15) TREES	(15) TREES
LANDSCAPE BUFFER:		
CR278	20'-0"	20'-0"
PARKDALE DRIVE	20'-0"	20'-0"
PARKING LOT LANDSCAPE (105 SPACES): (1) TREE PER 10 SPACES (1) TREE WITHIN 65'-0" PER SPACE		
	(11) TREES	(20) TREES YES
TOTAL TREES ON SITE: 53 TREES (53) CANOPY TREES, 4" CAL. = 100%		

LANDSCAPE LEGEND

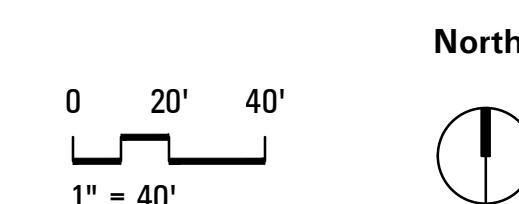
- 4" CAL. POND CYPRESS
Taxodium ascendense
(30) 12' HEIGHT TREES
- 4" CAL. TEXAS RED OAK
Quercus texana
(14) 12' HEIGHT TREES
- 4" CAL. LIVE OAK
Quercus virginiana
(3) 12' HEIGHT TREES
- 7 GAL. DWARF WAX MYRTLE
Myrica pusilla
(3,520 SF) 30" O.C. 36" HEIGHT
- 5 GAL. RED YUCCA
Hesperaloe parviflora
(2,689 SF) 30" O.C. 20"-24" HEIGHT
- 1 GAL. ASIAN JASMINE
Trachelospermum asiaticum
(8,431 SF) 12" O.C. 6"-8" HEIGHT
- 5 GAL. KARL FOERSTER GRASS
Calamagrost acutiflora karl foerster
(186 SF) 30" O.C. 28" HEIGHT
- BERMUDA TURF SOD
Cynoda dazyta
(94,436 SF)
- BERMUDA HYRDO-MULCH
Cynoda dazyta
(61,195 SF)
- SYNTHETIC TURF
(19,600 SF)
- RUBBER PLAY SURFACE
(5,308 SF)



01 VICINITY MAP
N.T.S.



02 LANDSCAPE PLAN
SCALE: 1" = 40'-0"



swa

2001 Irving Boulevard
Suite 157
Dallas, Texas
75207-6603
United States
www.swagroup.com
+1.214.954.0016 o

REVISION	DATE	DESCRIPTION
1	04.29.2020	CITY COMMENTS
2	05.15.2020	CITY COMMENTS
3	06.03.2020	CITY COMMENTS

RLK ENGINEERING, INC.
111 West Main
Allen, Texas 75013
(972) 359-1733 Off
(972) 359-1833 Fax
Texas Registration No. 579

REGISTERED LANDSCAPE ARCHITECT
STATE OF TEXAS
05/27/2020

MELISSA SCHOOLS

LANDSCAPE PLAN

MELISSA ELEMENTARY SCHOOL
MELISSA INDEPENDENT SCHOOL DISTRICT
MCKINNEY, TEXAS

DESIGNED BY: SWA GROUP INC
DRAWN BY: SWA GROUP INC
DRAWING FILE: 03-30-20
DRAWING SCALE: AS NOTED
PROJECT NUMBER: RLK: 18099

SHEET: **L1.01**

NOTE:
Prior to beginning any construction or construction staking, it shall be the Contractor's responsibility to contact the civil engineer to insure that all parties are in possession of the most current set of construction documents.

MISC. INFORMATION