

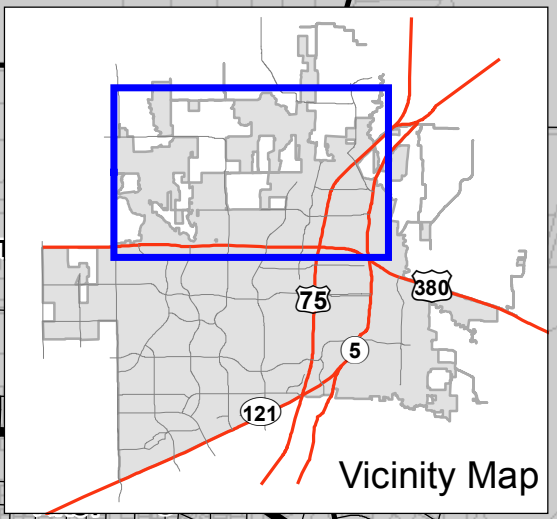
McKinney Municipal Utility District #1 of Collin County
(Trinity Falls MUD)

Erwin Park

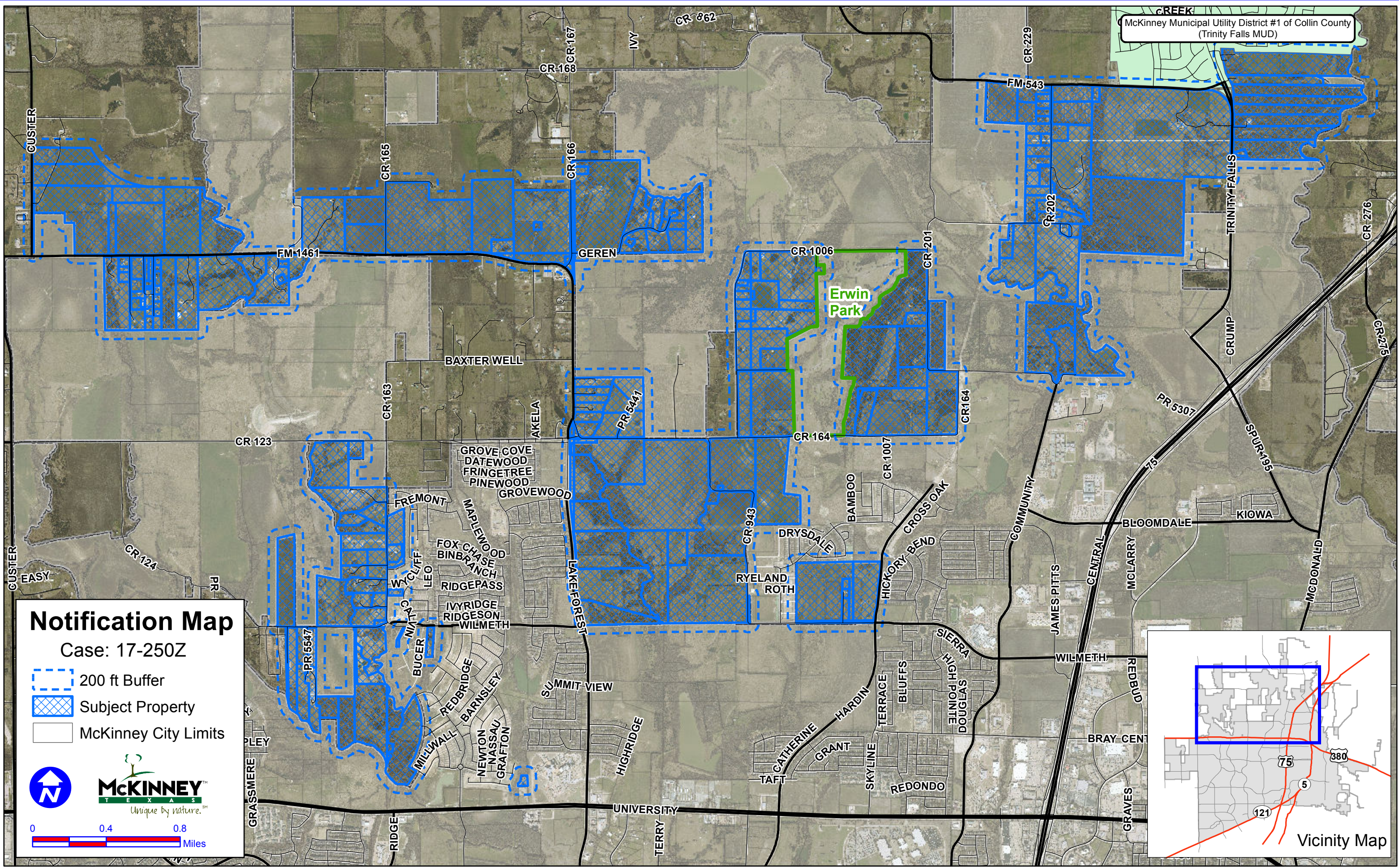
Notification Map

Case: 17-250Z

- 200 ft Buffer
- Subject Property
- McKinney City Limits



DISCLAIMER: This map and information contained in it were developed exclusively for use by the City of McKinney. Any use or reliance on this map by anyone else is at that party's risk and without liability to the City of McKinney, its officials or employees for any discrepancies, errors, or variances which may exist. Parcels CCAD current August 28, 2017.



DISCLAIMER: This map and information contained in it were developed exclusively for use by the City of McKinney. Any use or reliance on this map by anyone else is at that party's risk and without liability to the City of McKinney, its officials or employees for any discrepancies, errors, or variances which may exist. Parcels CCAD current August 28, 2017.