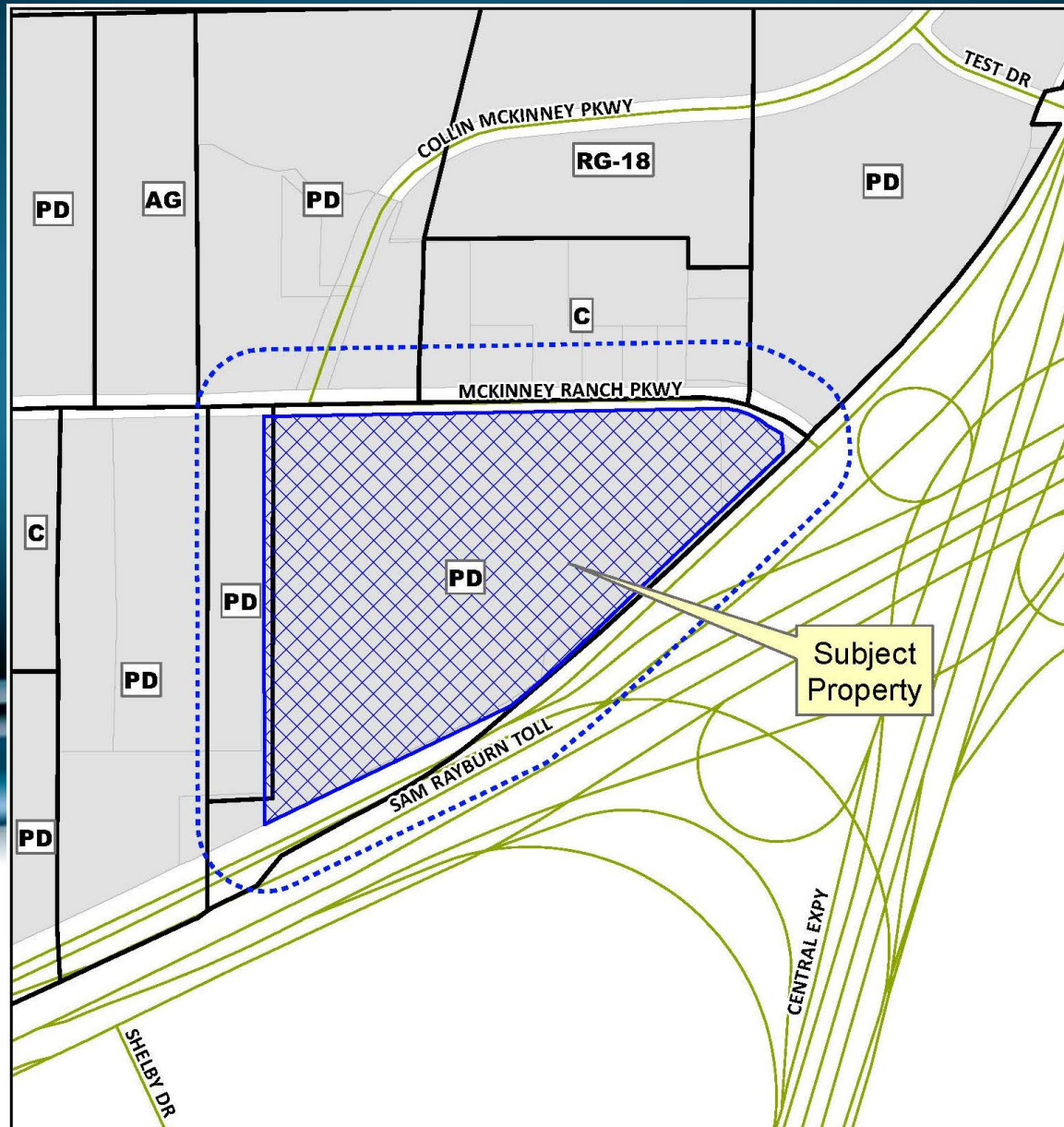


Case No. 12-187Z

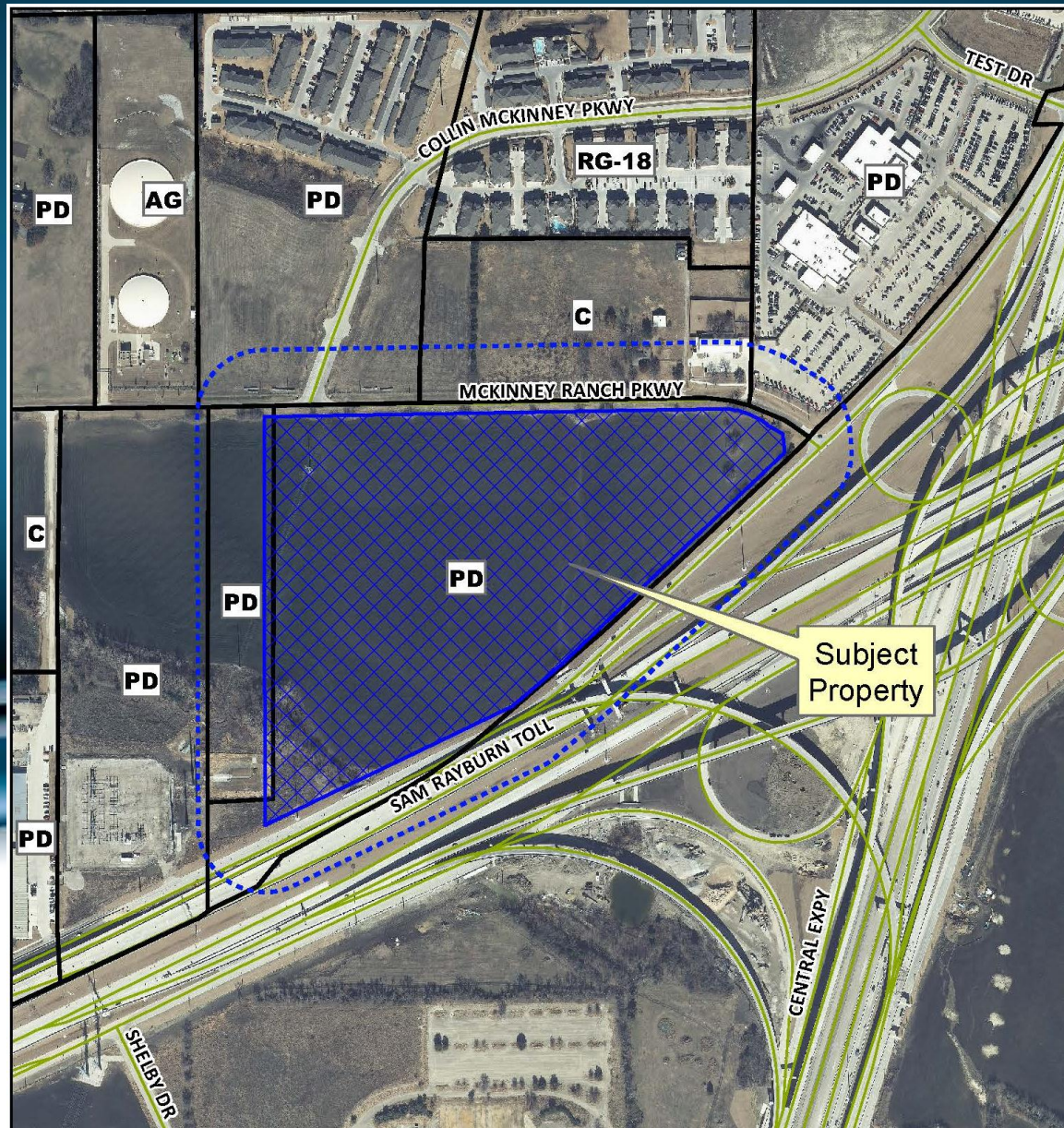
Located on the Northwest Corner of
State Highway 121 (Sam Rayburn Tollway)
and U.S. Highway 75 (Central Expressway)



Location Map



Aerial Exhibit



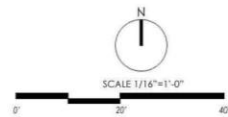
Zoning Exhibit



CHARACTER ELEVATION-FRONT

CHARACTER ELEVATION-SIDE

RECEIVED
By Kathy Wright at 4:15 pm, Jan 28, 2013



MCKINNEY POINTE MULTI FAMILY ELEVATION
MCKINNEY, TEXAS

STAFF RECOMMENDATION:

Staff recommends approval of the proposed rezoning request as conditioned in the Staff Report.