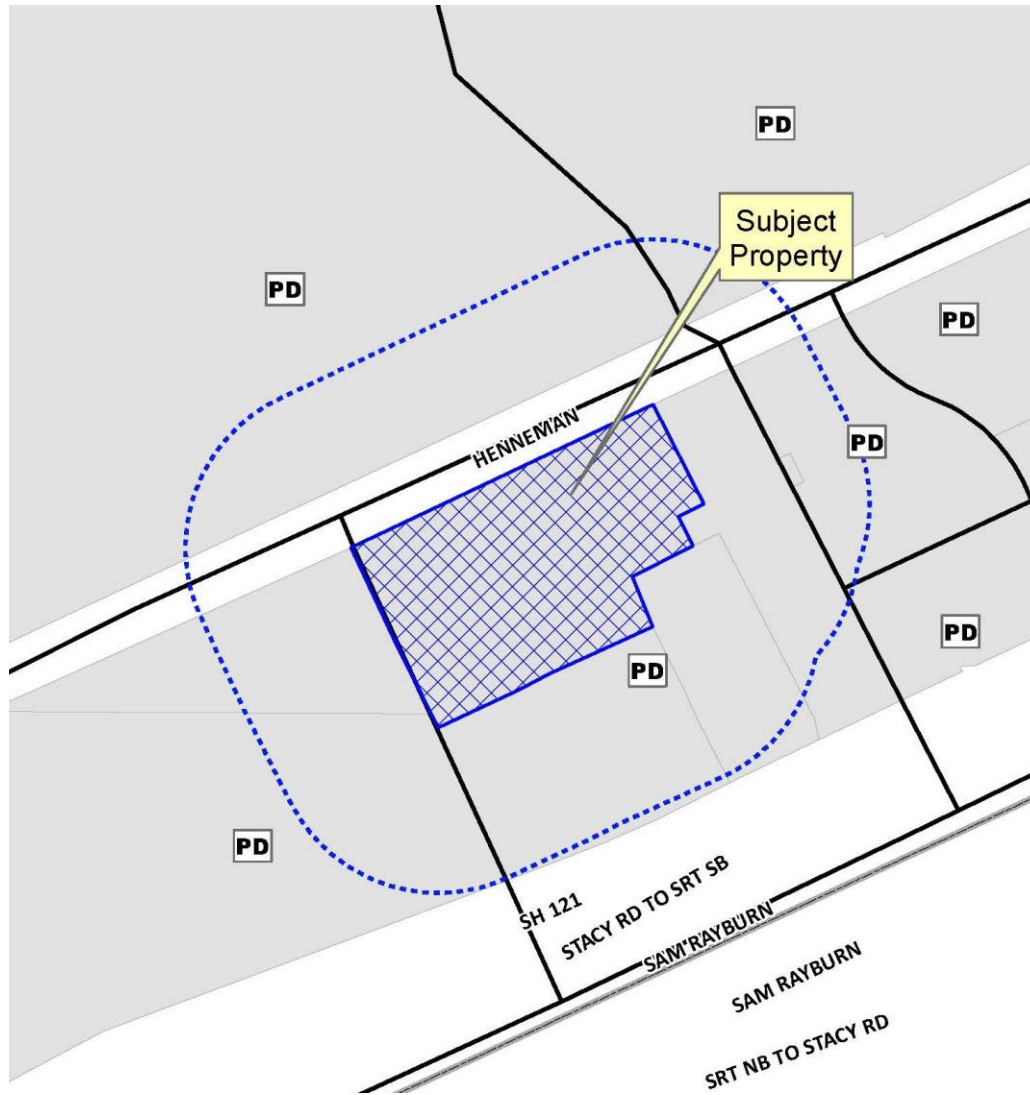


Holiday Inn Express
Meritorious Exception
15-025ME



Location Map



Aerial Exhibit



Proposed Elevations

02/09/2015 2:31:03 PM



NORTH ELEVATION

10.7% STONE TO STUCCO RATIO
26.1% WINDOW/DOOR TO SURFACE RATIO



WEST ELEVATION

26.54% STONE TO STUCCO RATIO
8.39% WINDOW/DOOR TO SURFACE RATIO

EXTERIOR FINISH LEGEND

- LS - STUCCO -LS- LIMESTONE SANDSTONE, MULTI-TEXTURE SURFACE
- LS5 - STUCCO -LS- SAND SMOOTH SURFACE
- DB - STUCCO -DB- DARK BRONZE, SAND FINE SURFACE
- RR - STUCCO -RR- RUSTIC RED, SAND SMOOTH SURFACE
- WH - STUCCO -WH- WHITE, SAND SMOOTH SURFACE
- ST - CULTURED STONE, LEDGESTONE SOUTHWEST BLEND
- SS - SUNSHADE 6" DEEP, "TUBE BLADE" CLEAR ANODIZED ALUM.
- AC - TYPICAL 'PTAK' HVAC WINDOW UNIT.

NOTES:

1. MAXIMUM REFLECTIVITY OF ALL EXTERIOR GLASS IS LESS THAN OR EQUAL TO 7 PERCENT.
2. PARAPET WALL ENCLOSES PERIMETER OF THE BUILDING.
3. ALL ROOF MOUNTED EQUIPMENT WILL BE SCREENED BY CONTINUOUS PARAPET WALL.

02-09-15



HOLIDAY INN EXPRESS - McKinney, TX
NORTH & WEST ELEVATIONS

LUNA
ARCHITECTURE
+ DESIGN



Proposed Elevations



SOUTH ELEVATION

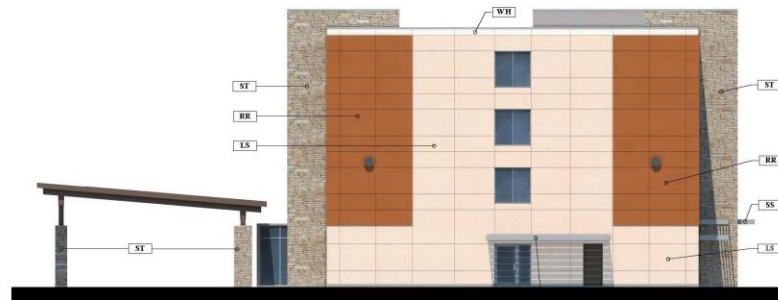
11.21% STONE TO STUCCO RATIO
27.22% WIDW/DOOR TO SURFACE RATIO

EXTERIOR FINISH LEGEND

- [LS] - STUCCO - LS; LIMESTONE SANDSTONE, MULTI TEXTURE SURFACE
- [LSS] - STUCCO - LS; SAND SMOOTH SURFACE
- [DB] - STUCCO - DB; DARK BRONZE, SAND FINE SURFACE
- [RR] - STUCCO - RR; RUSTIC RED, SAND SMOOTH SURFACE
- [WH] - STUCCO - WH; WHITE, SAND SMOOTH SURFACE
- [ST] - CULTURED STONE, LEDGESTONE SOUTHWEST BLEND
- [SS] - SUNSHADE: C'DEEP, "TUBE BLADE" CLEAR ANODIZED ALUM.
- [AC] - TYPICAL 'PTAK' HVAC WINDOW UNIT.

NOTES:

1. MAXIMUM REFLECTIVITY OF ALL EXTERIOR GLASS IS LESS THAN OR EQUAL TO 17 PERCENT.
2. PARAPET WALL ENCIRCLES PERIMETER OF THE BUILDING.
3. ALL ROOF MOUNTED EQUIPMENT WILL BE SCREENED BY CONTINUOUS PARAPET WALL.



EAST ELEVATION

27.18% STONE TO STUCCO RATIO
8.38% WIDW/DOOR TO SURFACE RATIO

02-09-15



HOLIDAY INN EXPRESS - McKinney, TX
SOUTH & EAST ELEVATIONS



Architectural Renderings

Informational Purposes Only



FRONT DAYTIME PERSPECTIVE

PROJECT# 17677 - McKinney, TX

LUNA
ARCHITECTURE
+ DESIGN



ZANTI HOTELS

Architectural Renderings

Informational Purposes Only



FRONT NIGHTTIME PERSPECTIVE

PROJECT# 17677 - McKinney, TX

LUNA
ARCHITECTURE
+ DESIGN



ZANTI HOTELS

Architectural Renderings

Informational Purposes Only



BACK DAYTIME PERSPECTIVE
PROJECT# 17677 - McKinney, TX

LUNA
ARCHITECTURE
+ DESIGN



Architectural Renderings

Informational Purposes Only



BACK NIGHTTIME PERSPECTIVE
PROJECT# 17677 - McKinney, TX

LUNA
ARCHITECTURE
+ DESIGN



ZANTI HOTELS