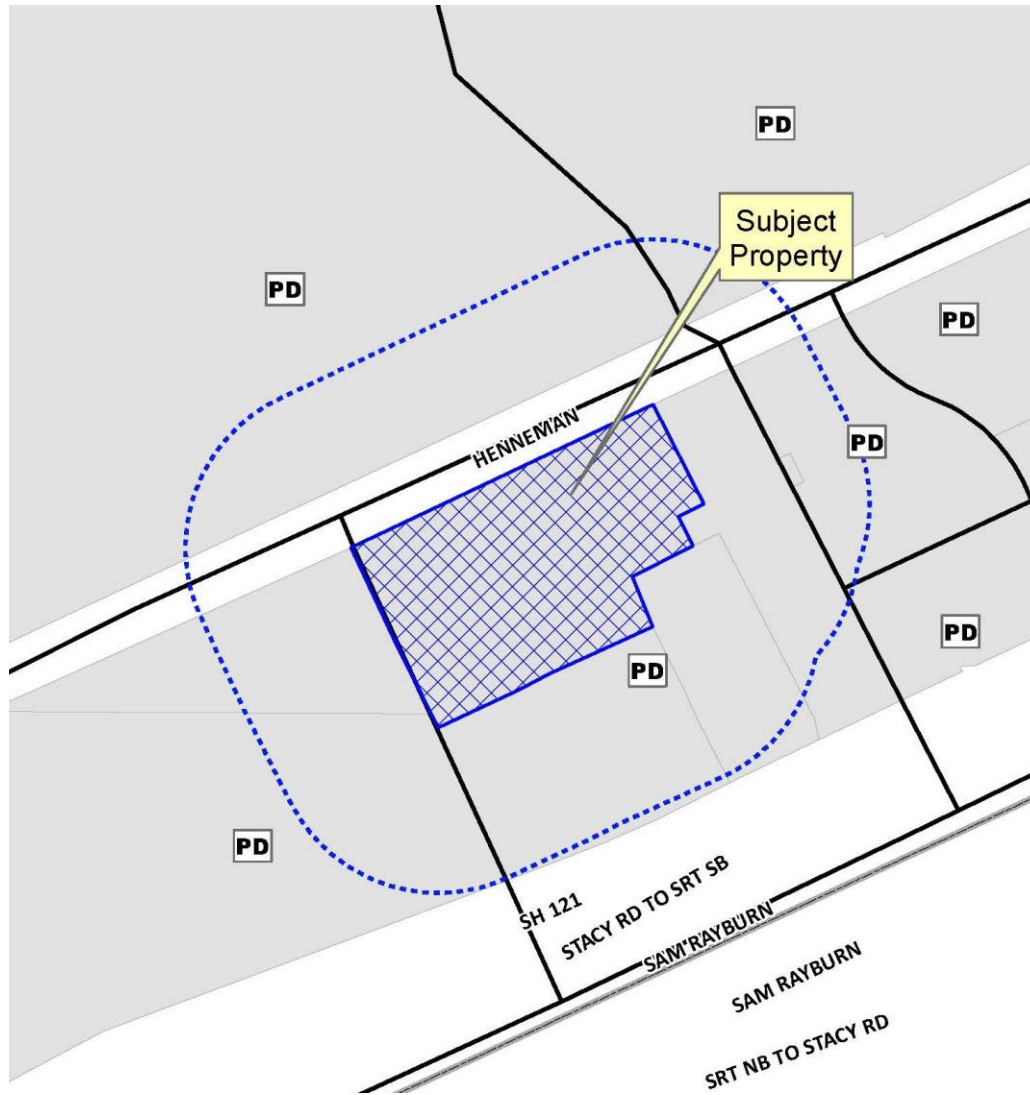


Holiday Inn Express
Meritorious Exception
15-025ME



Location Map



Aerial Exhibit



Proposed Elevations

03/02/2016 4:33:28 PM



NORTH ELEVATION
 33.8% STONE TO STUCCO RATIO
 26.1% WINDOW TO SURFACE RATIO



WEST ELEVATION
 23.3% STONE TO STUCCO RATIO
 13.5% WINDOW TO SURFACE RATIO

EXTERIOR FINISH LEGEND

- [LS] - STUCCO - LS: LIMESTONE SANDSTONE, MULTI-TEXTURE SURFACE
- [LSS] - STUCCO - LS: SAND SMOOTH SURFACE
- [DB] - STUCCO - DB: DARK BRONZE, SAND FINE SURFACE
- [KR] - STUCCO - KR: RUSTIC RED, SAND SMOOTH SURFACE
- [WH] - STUCCO - WH: WHITE, SAND SMOOTH SURFACE
- [ST] - CULTURED STONE, LEDGESTONE SOUTHWEST BLEND
- [SS] - SUNSHADE: 6 DEGREE "TUBE BLADE" CLEAR ANODIZED ALUM.
- [AC] - TYPICAL PEAK HVAC WINDOW UNIT.

NOTES:

1. MAXIMUM REFLECTIVITY OF ALL EXTERIOR GLASS IS LESS THAN OR EQUAL TO 27 PERCENT.
2. PARAPET WALL ENCLOSES PERIMETER OF THE BUILDING.
3. ALL ROOF MOUNTED EQUIPMENT WILL BE SCREENED BY CONTINUOUS PARAPET WALL.

03-02-15



HOLIDAY INN EXPRESS - McKinney, TX
 NORTH & WEST ELEVATIONS



Proposed Elevations



SOUTH ELEVATION

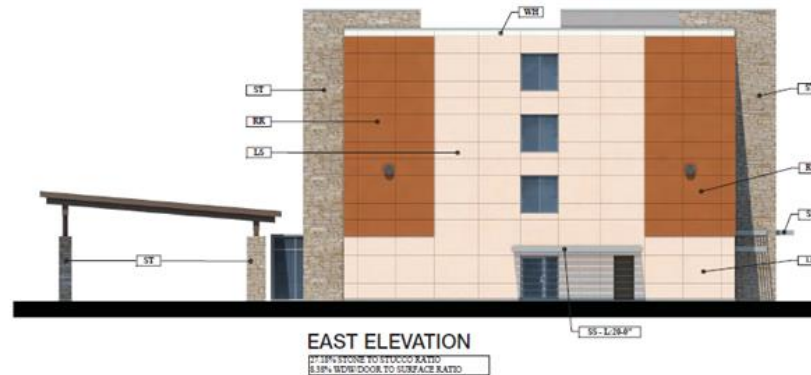
27.18% STONE TO STUCCO RATIO
57.22% WIDE DOOR TO SURFACE RATIO

EXTERIOR FINISH LEGEND

- LS - STUCCO - LS, LAGERSTONE/SANDSTONE, MULTI-TEXTURE SURFACE
- LS2 - STUCCO - LS, SAND SMOOTH SURFACE
- DB - STUCCO - DB, DARK BRONZE, SAND FINE SURFACE
- RR - STUCCO - RR, RUSTIC RED, SAND SMOOTH SURFACE
- WH - STUCCO - WH, WHITE, SAND SMOOTH SURFACE
- SY - CULTURED STONE, LEDGESTONE SOUTHWEST BLEND
- SS - SUNSHADE @ DEEP, "TIRE BLADE" CLEAR ANODIZED ALUM.
- AC - TYPICAL 'PEAK' HVAC WINDOW UNIT.

NOTES:

1. MAXIMUM REFLECTIVITY OF ALL EXTERIOR GLASS IS LESS THAN OR EQUAL TO 27 PERCENT.
2. PARAPET WALL ENCLOSES PERIMETER OF THE BUILDING.
3. ALL ROOF MOUNTED EQUIPMENT WILL BE SCREENED BY CONTINUOUS PARAPET WALL.



EAST ELEVATION

27.18% STONE TO STUCCO RATIO
61.94% WIDE DOOR TO SURFACE RATIO

03-02-15



HOLIDAY INN EXPRESS - McKinney, TX
SOUTH & EAST ELEVATIONS

LUNA
ARCHITECTURE
+ DESIGN



ZANTI HOTELS

Architectural Renderings

Informational Purposes Only

10/22/2016 4:53:30 PM



03-27-2015



FRONT DAYTIME PERSPECTIVE
PROJECT# 17677 - McKinney, TX

LUNA
ARCHITECTURE
+ DESIGN



Architectural Renderings

Informational Purposes Only



03-27-2015



FRONT NIGHTTIME PERSPECTIVE

PROJECT# 17677 - McKinney, TX

LUNA
ARCHITECTURE
+ DESIGN



ZANTI HOTELS

Architectural Renderings

Informational Purposes Only



02-27-2015



BACK DAYTIME PERSPECTIVE

PROJECT# 17677 - McKinney, TX

LUNA
ARCHITECTURE
+ DESIGN



ZANTI HOTELS

Architectural Renderings

Informational Purposes Only



03-27-2015



BACK NIGHTTIME PERSPECTIVE

PROJECT# 17677 - McKinney, TX

LUNA
ARCHITECTURE
+ DESIGN



ZANTI HOTELS