

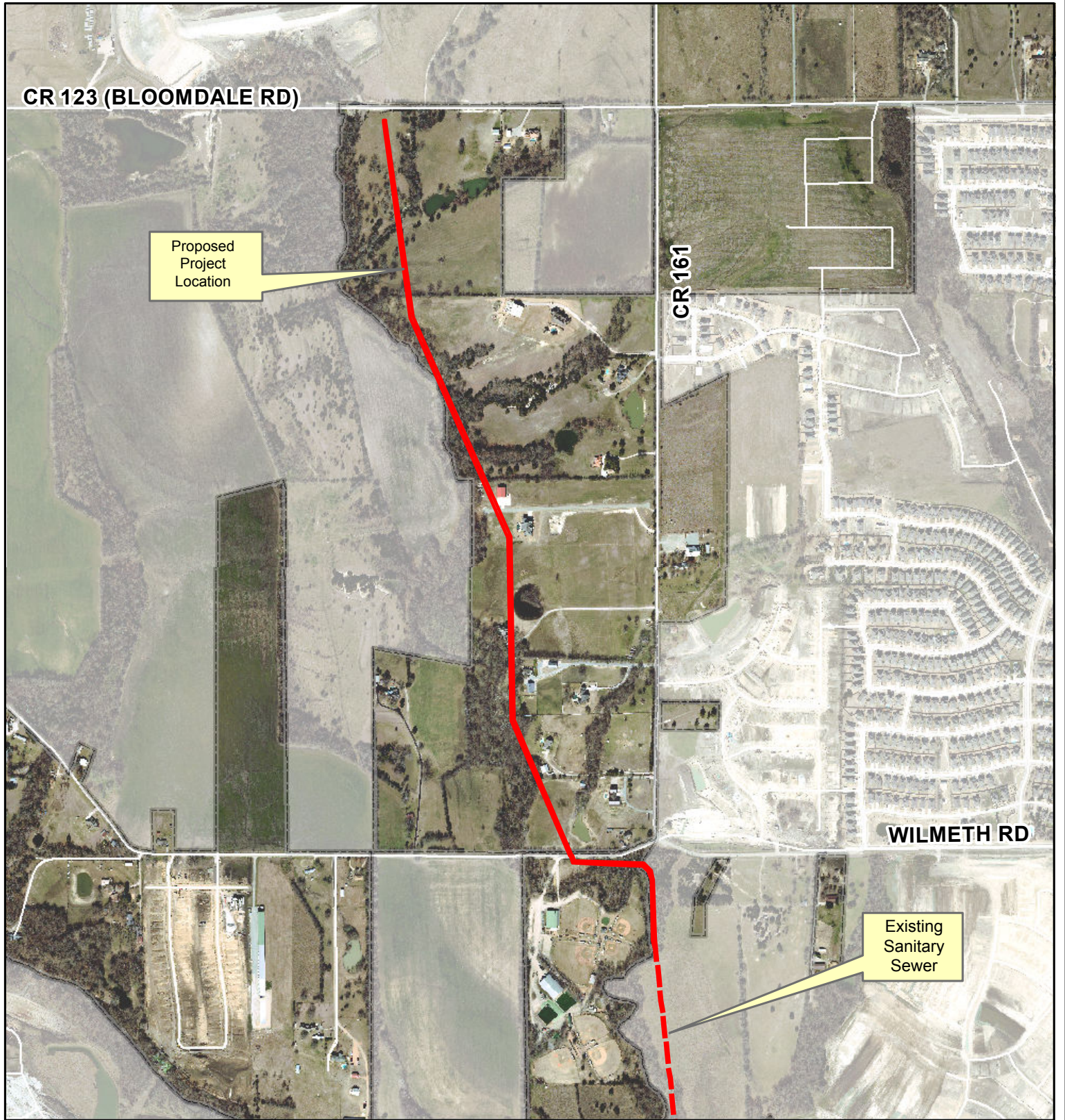
CR 123 (BLOOMDALE RD)

Proposed Project Location

CR 161

WILMETH RD

Existing Sanitary Sewer

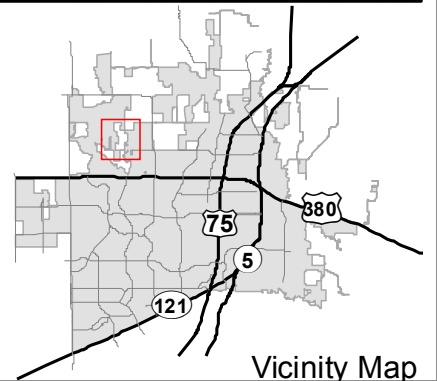


0 560 1,120 Feet

Stover Creek Sanitary Sewer Location Map



City Limits
1661.56 acres in basin



Vicinity Map

DISCLAIMER: This map and information contained in it were developed exclusively for use by the City of McKinney. Any use or reliance on this map by anyone else is at that party's risk and without liability to the City of McKinney, its officials or employees for any discrepancies, errors, or variances which may exist.