



ENGINEERS ■ SURVEYORS ■ PLANNERS  
LANDSCAPE ARCHITECTS ■ ENVIRONMENTAL SCIENTISTS

TriWest Plaza, 3030 LBJ Freeway, Suite 100  
Dallas, TX 75234  
(972) 488-3737 Fax (972) 488-6732

www.ceieng.com

**October 24, 2016**

City of McKinney  
221 N. Tennessee St.  
McKinney, Texas 75069

**RE: SUP submittal: Proposed 7 Eleven – SWC of Wilmeth Road & Lake Forest Drive**

Dear SIR/Madam:

Enclosed is the SUP submittal for the proposed 7 Eleven project located on the SWC or Wilmeth Road and Lake Forest Drive. The property is currently a non-platted vacant site of approximately 2.618 acres. 7 Eleven is proposing to develop approximately 1.20 acres on the corner.

Currently the site is zoned as PD-Planned Development District Ordinance No. 2003-06-060 and follows the BN-Neighborhood business district regulations.

We are requesting an approval of a specific use permit to allow for motor vehicle fuel sales of 12 fueling positions at a time within 350 feet of the intersection.

The proposed 7 Eleven development will only consist of a gasoline service station with a convenience store. 7 Eleven does not conduct major automotive repairs, body and fender work, or automobile painting services and does not provide stock of goods displayed out of the doors, except for lubricants and additives for frequent sales. A solid enclosure for waste material will be provided at the dumpster area.

The dumpster area was relocated closer to the building and away from the residential properties to south.

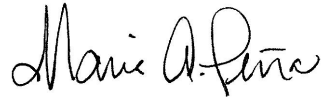
No lighting will be constructed to shine on the residential neighboring properties. 7 Eleven typically provides lighting fixtures that can control the light distribution. The package includes a Photometric Lighting Study. It includes some illustrations of 3D modeling showing how the light distribution is being controlled.

Along the south property line, adjacent to the residential properties, Verdad, the developer for the 7 Eleven, is proposing to have an 8 foot masonry wall instead of the city required 6 foot masonry wall. They are also providing an additional 3 canopy trees to the required landscape buffer tree count requirement of 7 canopy trees, so that the trees are spaced 24 foot on center instead of the required 40 foot on center per city landscape ordinance.

A 7 Eleven at this location will provide a convenience for the residential neighborhoods north and south of this site as well as the north and south bound customers. A 12 vehicle fueling station will allow the customers to experience a less congested service area.

Should you have any questions or comments please feel free to give me call.

Sincerely,

A handwritten signature in black ink that reads "Maria A. Peña". The signature is written in a cursive style with a large, looped initial "M".

Maria A. Peña, Project Manager  
CEI Engineering associates, INC.



# Lighting level study

**RECEIVED**

*By Planning Department at 2:01 pm, Oct 24, 2016*

GE Lighting Solution ,1975 Noble Road B328-R229, East Cleveland, OH 44112-6300  
www.gelighting.com

**Project name : 7-11 site 523**

**Date:9/28/2016**

**Prepared for: 7 Eleven**

AGi32 Version 17.2.12

**Filename: 7-11 site 523.AGI**

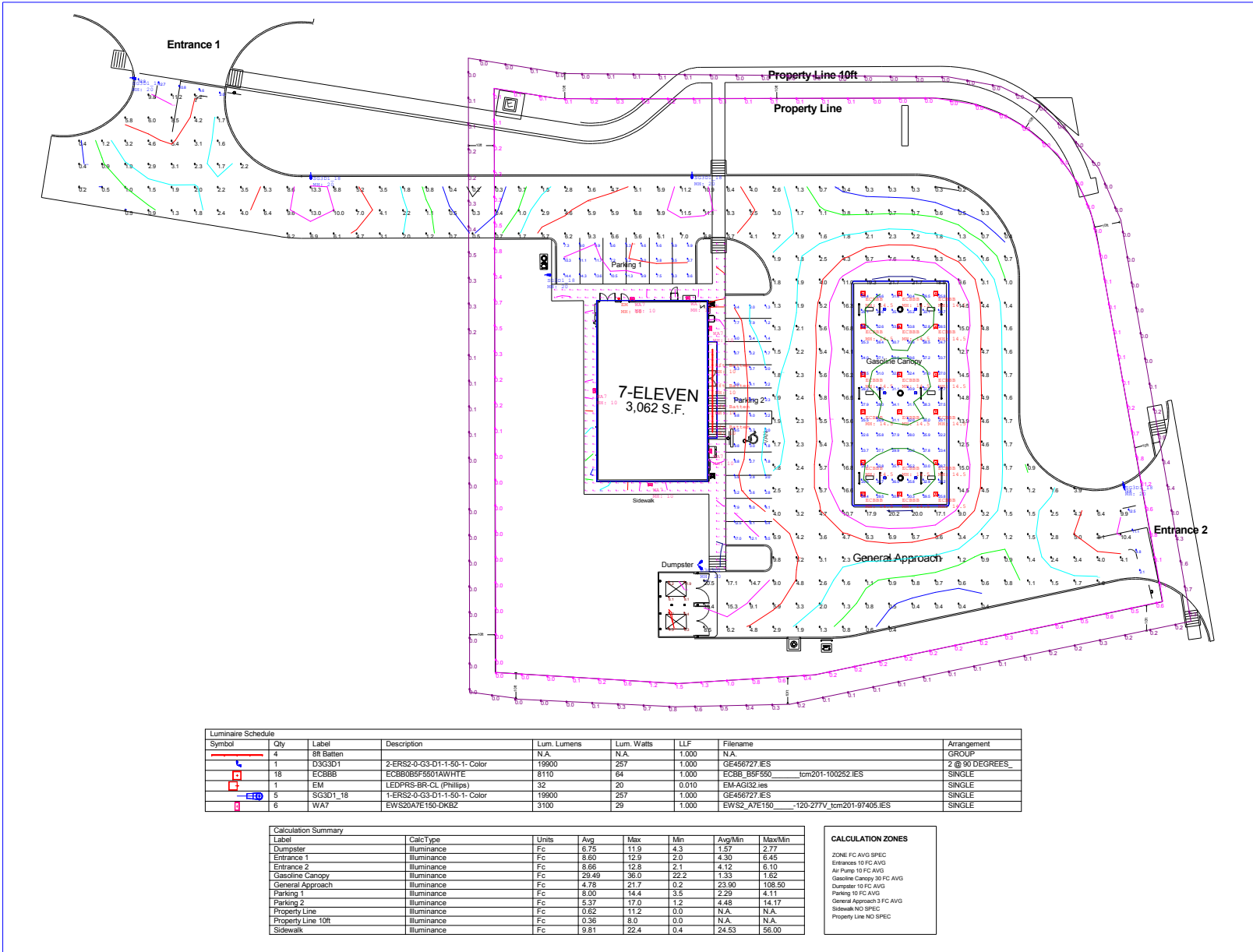
Total Time (Hrs.): 13.95

**By : Maxime Moldvar**

**Units:**

**Page 1 of 12**

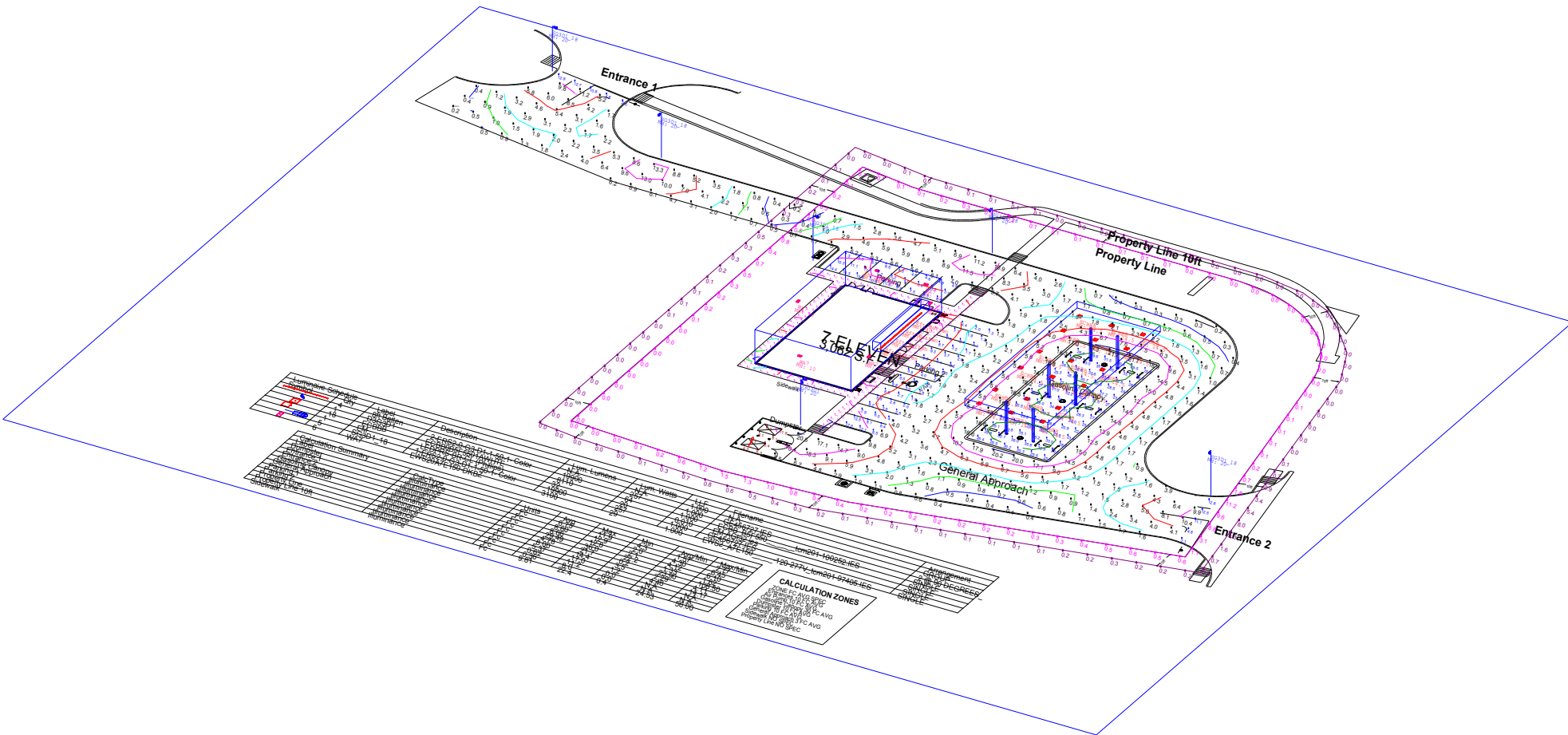
DISCLAIMER: Calculations have been performed according to IESNA & CIE standards and goodpractice. Some differences between measured values and calculated results may occur due to tolerances in calculation methods, testing procedures, component performance, measurement techniques and field conditions such as voltage and temperature variations. Input data used to generate the attached calculations such as room dimensions, reflectances, furniture and architectural elements significantly affect the lighting calculations. If the real environment conditions do not match the input data, differences will occur between measured values and calculated values.



| Symbol | Qty | Label     | Description                  | Lum. Lumens | Lum. Watts | LLF   | Filename                              | Arrangement    |
|--------|-----|-----------|------------------------------|-------------|------------|-------|---------------------------------------|----------------|
| 4      | 4   | 8R Batten | N.A.                         | N.A.        | N.A.       | 1.000 | N.A.                                  | GROUP          |
| 1      | 18  | D3G3D1    | 2-ERS2-0-G3-D1-1-50-1- Color | 19000       | 257        | 1.000 | GE456727.IES                          | 2 @ 90 DEGREES |
| 18     | 1   | ECBBB     | ECBB0BSF5501AWHTE            | 8110        | 64         | 1.000 | ECBB_BSF550_tcm201-100252.IES         | SINGLE         |
| 1      | 1   | EM        | LEDPRS-BR-CL (Phillips)      | 32          | 20         | 0.010 | EM-AGI32.ies                          | SINGLE         |
| 5      | 6   | SG3D1_18  | 1-ERS2-0-G3-D1-1-50-1- Color | 19000       | 257        | 1.000 | GE456727.IES                          | SINGLE         |
| 6      | 1   | WA7       | EWS23ATE150-DRKZ             | 3100        | 29         | 1.000 | EWS23ATE150_120-277V_tcm201-97405.IES | SINGLE         |

| Label              | CalcType    | Units | Avg   | Max  | Min  | Avg/Min | Max/Min |
|--------------------|-------------|-------|-------|------|------|---------|---------|
| Dumpster           | Fc          | 6.75  | 11.9  | 4.3  | 1.57 | 2.77    |         |
| Entrance 1         | Illuminance | Fc    | 8.60  | 12.9 | 2.0  | 4.30    | 6.45    |
| Entrance 2         | Illuminance | Fc    | 8.68  | 12.9 | 2.1  | 4.12    | 6.10    |
| Gasoline Canopy    | Illuminance | Fc    | 29.49 | 36.0 | 22.2 | 1.33    | 1.62    |
| General Approach   | Illuminance | Fc    | 4.78  | 21.7 | 0.2  | 23.90   | 108.50  |
| Parking 1          | Illuminance | Fc    | 8.00  | 14.4 | 3.5  | 2.29    | 4.11    |
| Parking 2          | Illuminance | Fc    | 5.37  | 17.0 | 1.2  | 4.48    | 14.17   |
| Property Line      | Illuminance | Fc    | 0.62  | 11.2 | 0.0  | N.A.    | N.A.    |
| Property Line 10ft | Illuminance | Fc    | 0.36  | 8.0  | 0.0  | N.A.    | N.A.    |
| Sidewalk           | Illuminance | Fc    | 9.81  | 22.4 | 0.4  | 24.53   | 56.00   |

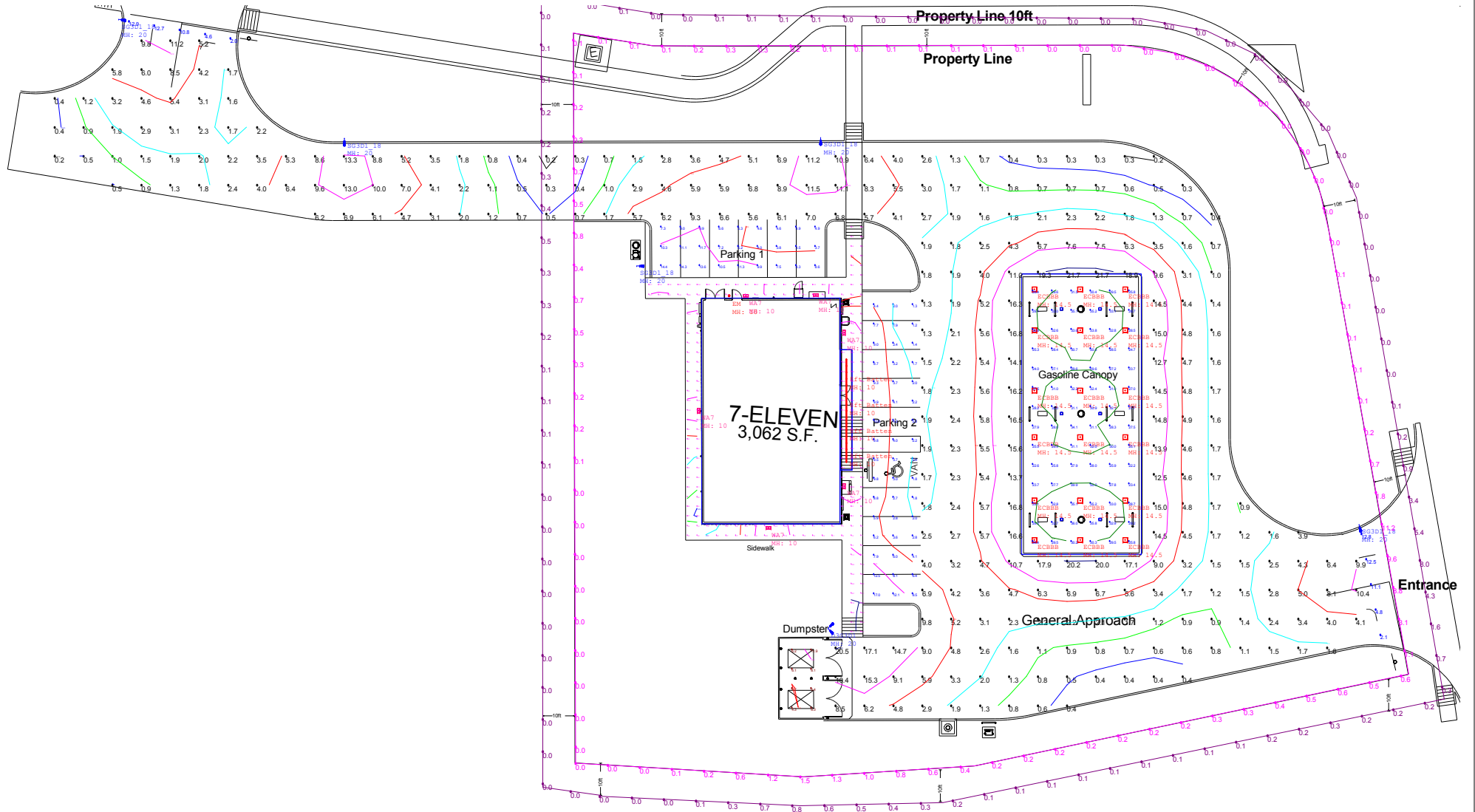
| Calculation Zones         |
|---------------------------|
| ZONE FC AVG SPEC          |
| Entrances 10 FC AVG       |
| Air Pump 10 FC AVG        |
| Gasoline Canopy 30 FC AVG |
| Dumpster 10 FC AVG        |
| Parking 10 FC AVG         |
| General Approach 3 FC AVG |
| Sidewalk NO SPEC          |
| Property Line NO SPEC     |



| Item # | Description   | Qty | Unit | Notes |
|--------|---------------|-----|------|-------|
| 101    | Light Fixture | 10  | EA   |       |
| 102    | Light Fixture | 10  | EA   |       |
| 103    | Light Fixture | 10  | EA   |       |
| 104    | Light Fixture | 10  | EA   |       |
| 105    | Light Fixture | 10  | EA   |       |
| 106    | Light Fixture | 10  | EA   |       |
| 107    | Light Fixture | 10  | EA   |       |
| 108    | Light Fixture | 10  | EA   |       |
| 109    | Light Fixture | 10  | EA   |       |
| 110    | Light Fixture | 10  | EA   |       |



|                                                                                                                                                                                                                                                                                                                                                                                                                                                                                                                                                                                                                                                                                                  |                                     |               |                          |
|--------------------------------------------------------------------------------------------------------------------------------------------------------------------------------------------------------------------------------------------------------------------------------------------------------------------------------------------------------------------------------------------------------------------------------------------------------------------------------------------------------------------------------------------------------------------------------------------------------------------------------------------------------------------------------------------------|-------------------------------------|---------------|--------------------------|
| GE Lighting Solution ,1975 Noble Road B328-R229, East Cleveland, OH 44112-6300<br><a href="http://www.gelighting.com">www.gelighting.com</a>                                                                                                                                                                                                                                                                                                                                                                                                                                                                                                                                                     | <b>Project name : 7-11 site 523</b> |               | <b>Date:9/28/2016</b>    |
|                                                                                                                                                                                                                                                                                                                                                                                                                                                                                                                                                                                                                                                                                                  | <b>Prepared for: 7 Eleven</b>       |               | AGI32 Version 17.2.12    |
| <small>DISCLAIMER: Calculations have been performed according to IESNA &amp; CIE standards and goodpractice. Some differences between measured values and calculated results may occurdue to tolerances in calculation methods, testing procedures, component performance,measurement techniques and field conditions such as voltage and temperature variations. Input data used to generate the attached calculations such as room dimensions, reflectances, furniture and architectural elements significantly affect the lightingcalculations. If the real environment conditions do not match the input data, differences will occur between measured values and calculated values.</small> | <b>Filename: 7-11 site 523.AGI</b>  |               | Total Time (Hrs.): 13.95 |
|                                                                                                                                                                                                                                                                                                                                                                                                                                                                                                                                                                                                                                                                                                  | <b>By : Maxime Moldvar</b>          | <b>Units:</b> | <b>Page 4 of 12</b>      |



| Luminaire Schedule |     |            |                              |             |            |       |              |                |
|--------------------|-----|------------|------------------------------|-------------|------------|-------|--------------|----------------|
| Symbol             | Qty | Label      | Description                  | Lum. Lumens | Lum. Watts | LLF   | Filename     | Arrangement    |
|                    | 4   | 8ft Batten |                              | N.A.        | N.A.       | 1.000 | N.A.         | GROUP          |
|                    | 1   | D3G3D1     | 2-ERS2-0-G3-D1-1-50-1- Color | 19900       | 257        | 1.000 | GE456727.IES | 2 @ 90 DEGREES |



# Results summary

| Luminaire Schedule |     |            |                              |            |             |       |                                           |                  |
|--------------------|-----|------------|------------------------------|------------|-------------|-------|-------------------------------------------|------------------|
| Symbol             | Qty | Label      | Description                  | Lum. Watts | Lum. Lumens | LLF   | Filename                                  | Arrangement      |
|                    | 4   | 8ft Batten |                              | N.A.       | N.A.        | 1.000 | N.A.                                      | GROUP            |
|                    | 1   | D3G3D1     | 2-ERS2-0-G3-D1-1-50-1- Color | 257        | 19900       | 1.000 | GE456727.IES                              | 2 @ 90 DEGREES_1 |
|                    | 18  | ECBBB      | ECBB0B5F5501AWHTE            | 64         | 8110        | 1.000 | ECBB_B5F550_____tcm201-100252.IES         | SINGLE           |
|                    | 1   | EM         | LEDPRS-BR-CL (Phillips)      | 20         | 32          | 0.010 | EM-AGI32.ies                              | SINGLE           |
|                    | 5   | SG3D1_18   | 1-ERS2-0-G3-D1-1-50-1- Color | 257        | 19900       | 1.000 | GE456727.IES                              | SINGLE           |
|                    | 6   | WA7        | EWS20A7E150-DKBZ             | 29         | 3100        | 1.000 | EWS2_A7E150_____120-277V_tcm201-97405.IES | SINGLE           |

| Calculation Summary |             |       |       |      |      |         |         |
|---------------------|-------------|-------|-------|------|------|---------|---------|
| Label               | CalcType    | Units | Avg   | Max  | Min  | Avg/Min | Max/Min |
| Dumpster            | Illuminance | Fc    | 6.75  | 11.9 | 4.3  | 1.57    | 2.77    |
| Entrance 1          | Illuminance | Fc    | 8.60  | 12.9 | 2.0  | 4.30    | 6.45    |
| Entrance 2          | Illuminance | Fc    | 8.66  | 12.8 | 2.1  | 4.12    | 6.10    |
| Gasoline Canopy     | Illuminance | Fc    | 29.49 | 36.0 | 22.2 | 1.33    | 1.62    |
| General Approach    | Illuminance | Fc    | 4.78  | 21.7 | 0.2  | 23.90   | 108.50  |
| Parking 1           | Illuminance | Fc    | 8.00  | 14.4 | 3.5  | 2.29    | 4.11    |
| Parking 2           | Illuminance | Fc    | 5.37  | 17.0 | 1.2  | 4.48    | 14.17   |
| Property Line       | Illuminance | Fc    | 0.62  | 11.2 | 0.0  | N.A.    | N.A.    |
| Property Line 10ft  | Illuminance | Fc    | 0.36  | 8.0  | 0.0  | N.A.    | N.A.    |
| Sidewalk            | Illuminance | Fc    | 9.81  | 22.4 | 0.4  | 24.53   | 56.00   |

GE Lighting Solution ,1975 Noble Road B328-R229, East Cleveland, OH 44112-6300  
www.gelighting.com

Project name : 7-11 site 523

Date:9/28/2016

Prepared for: 7 Eleven

AGI32 Version 17.2.12

Filename: 7-11 site 523.AGI

Total Time (Hrs.): 13.95

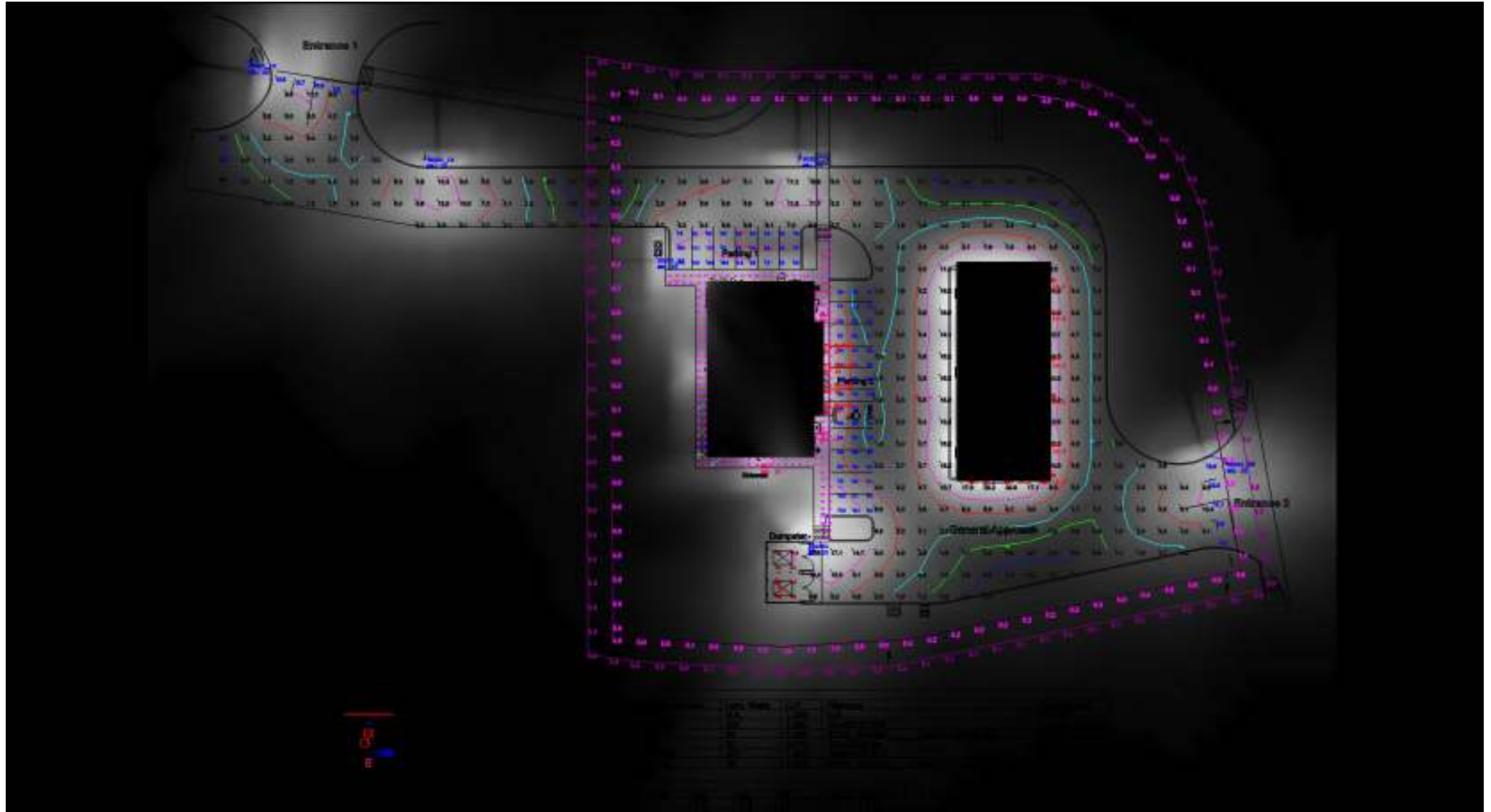
By : Maxime Moldvar

Units:

Page 6 of 12

DISCLAIMER: Calculations have been performed according to IESNA & CIE standards and goodpractice. Some differences between measured values and calculated results may occur due to tolerances in calculation methods, testing procedures, component performance, measurement techniques and field conditions such as voltage and temperature variations. Input data used to generate the attached calculations such as room dimensions, reflectances, furniture and architectural elements significantly affect the lighting calculations. If the real environment conditions do not match the input data, differences will occur between measured values and calculated values.





GE Lighting Solution ,1975 Noble Road B328-R229, East Cleveland, OH 44112-6300  
[www.gelighting.com](http://www.gelighting.com)

DISCLAIMER: Calculations have been performed according to IESNA & CIE standards and goodpractice. Some differences between measured values and calculated results may occur due to tolerances in calculation methods, testing procedures, component performance, measurement techniques and field conditions such as voltage and temperature variations. Input data used to generate the attached calculations such as room dimensions, reflectances, furniture and architectural elements significantly affect the lighting calculations. If the real environment conditions do not match the input data, differences will occur between measured values and calculated values.

**Project name : 7-11 site 523**

**Prepared for: 7 Eleven**

**Filename: 7-11 site 523.AGI**

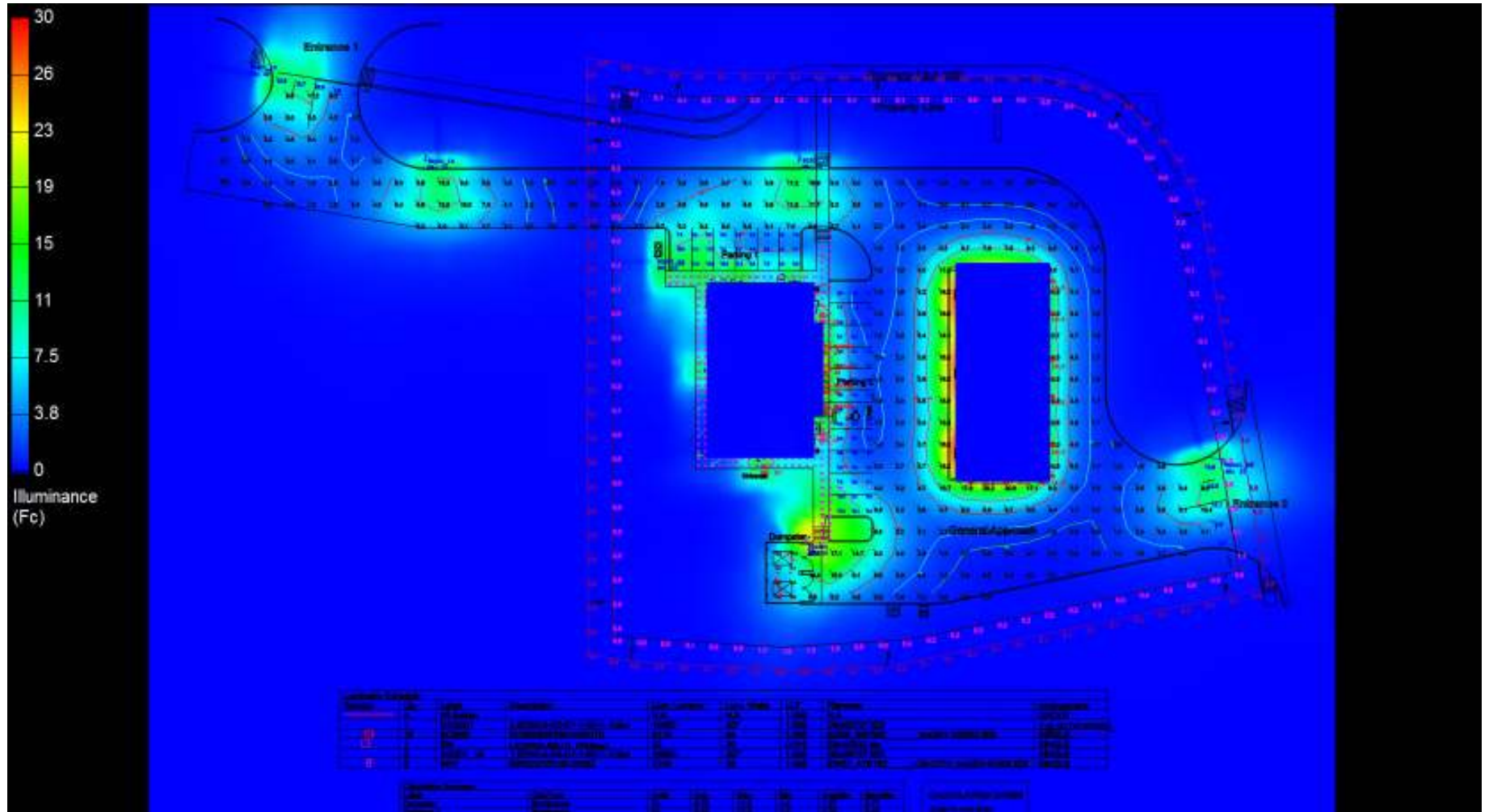
**By : Maxime Moldvar**

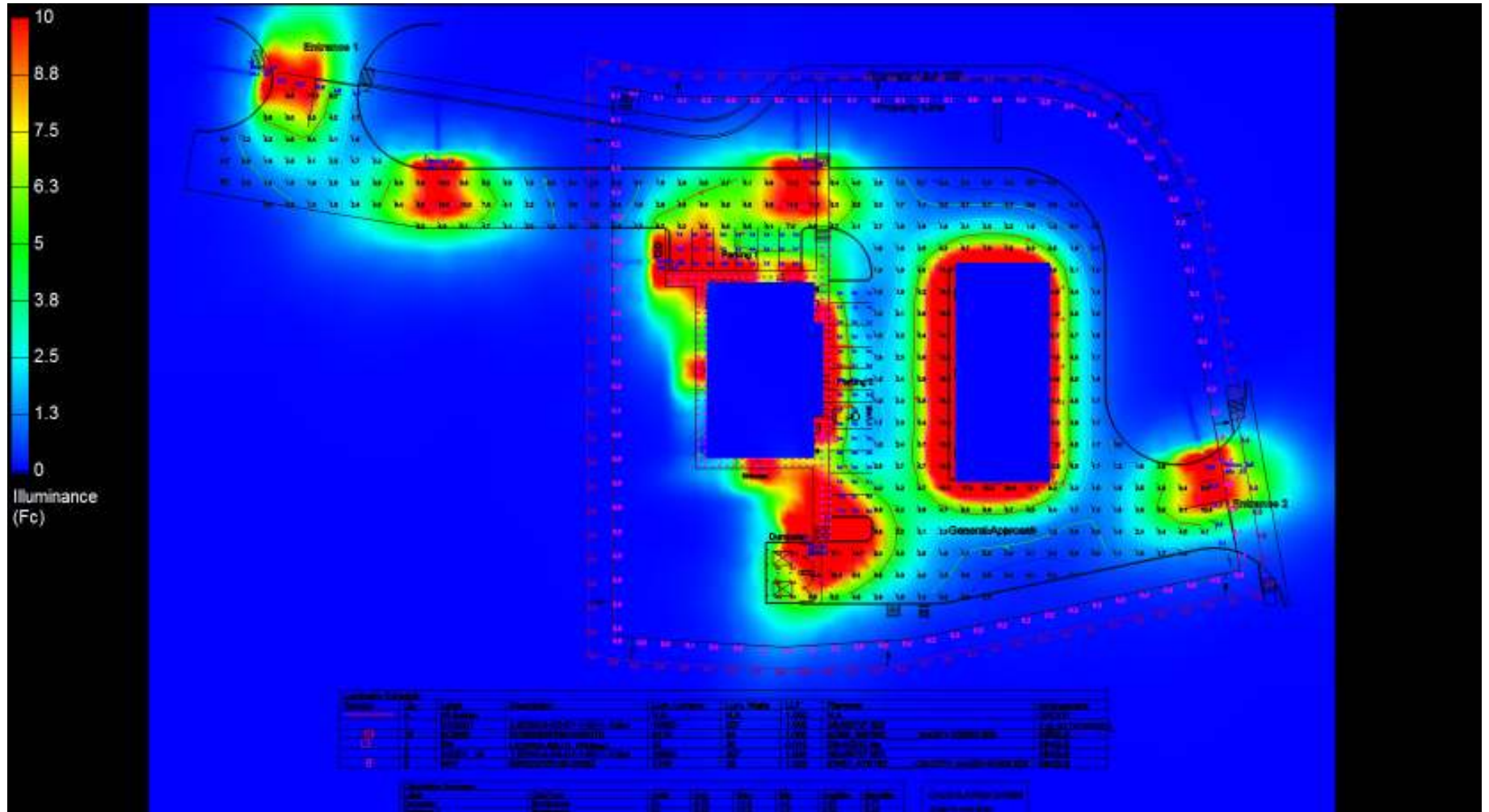
**Units:**

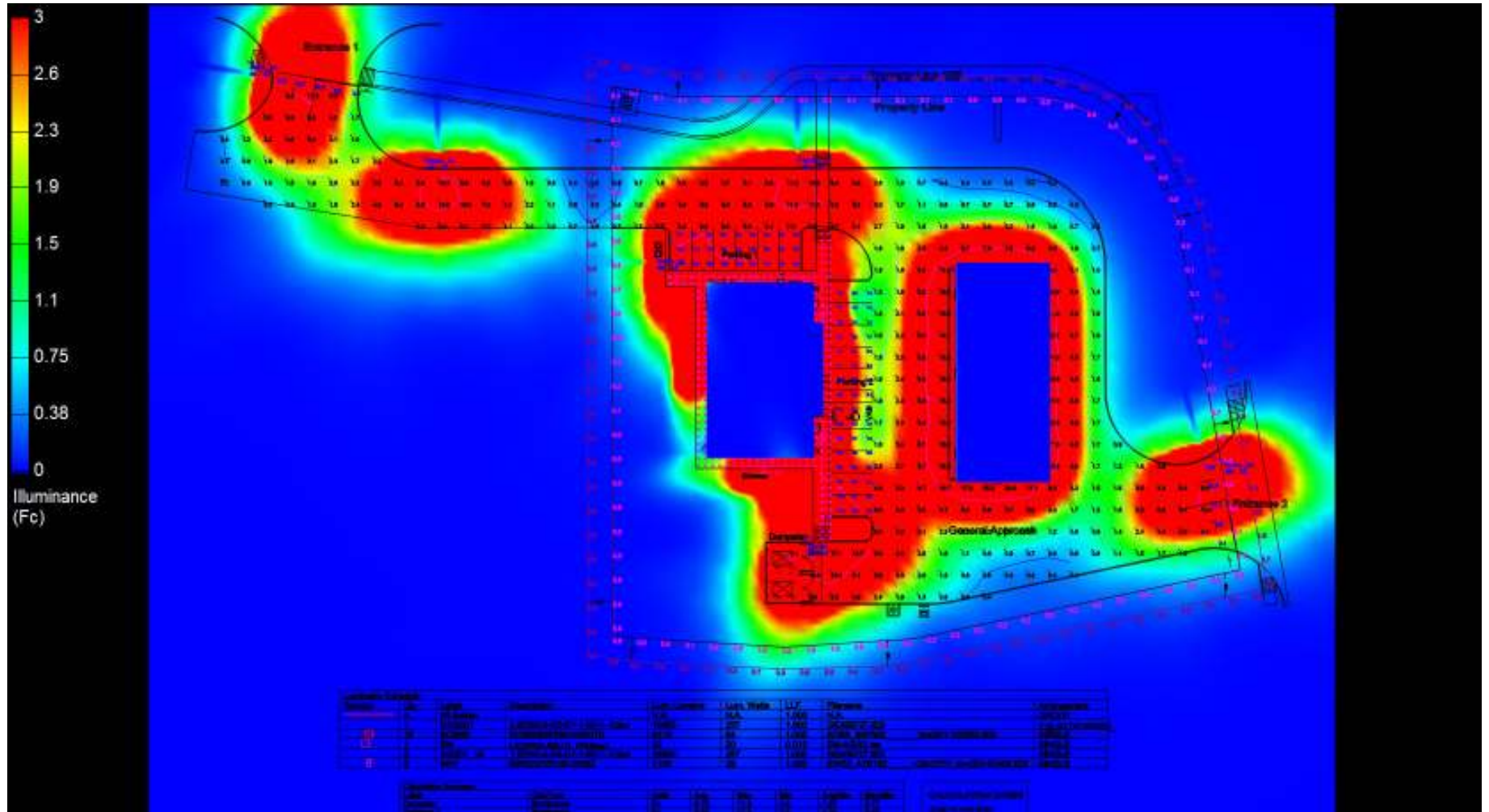
**Date:9/28/2016**

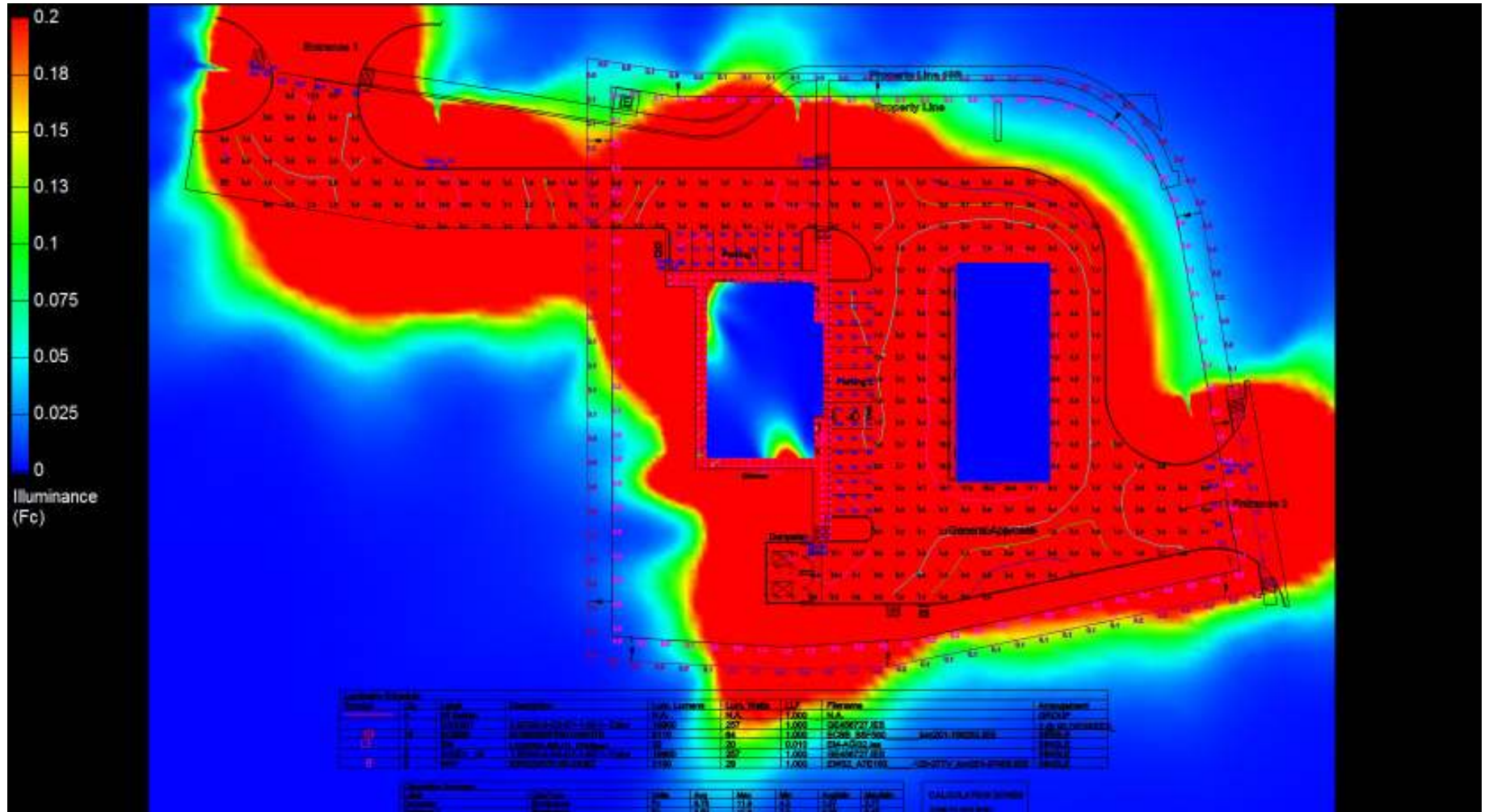
AGI32 Version 17.2.12

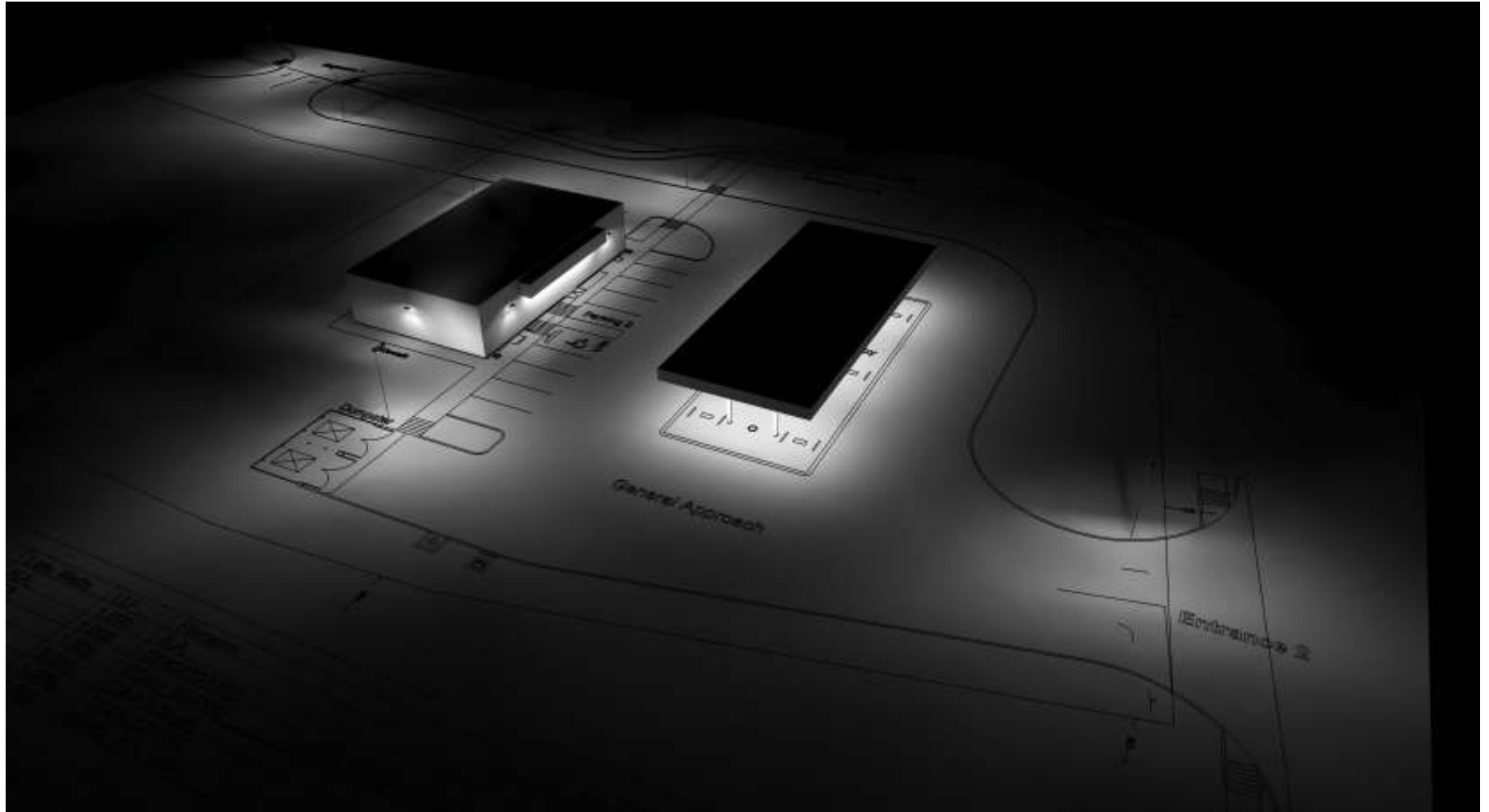
Total Time (Hrs.): 13.95











GE Lighting Solution ,1975 Noble Road B328-R229, East Cleveland, OH 44112-6300  
[www.gelighting.com](http://www.gelighting.com)

DISCLAIMER: Calculations have been performed according to IESNA & CIE standards and goodpractice. Some differences between measured values and calculated results may occur due to tolerances in calculation methods, testing procedures, component performance, measurement techniques and field conditions such as voltage and temperature variations. Input data used to generate the attached calculations such as room dimensions, reflectances, furniture and architectural elements significantly affect the lighting calculations. If the real environment conditions do not match the input data, differences will occur between measured values and calculated values.

**Project name : 7-11 site 523**

**Prepared for: 7 Eleven**

**Filename: 7-11 site 523.AGI**

**By : Maxime Moldvar**

**Units:**

**Date:9/28/2016**

AGI32 Version 17.2.12

Total Time (Hrs.): 13.95