

LOT 17 LANDSCAPE TABULATIONS

SITE AREA LANDSCAPING	
10% OF THE SITE SHALL BE IN PERMANENT LANDSCAPING	
TOTAL SITE AREA UNDER DEVELOPMENT	48,071 S.F.
10% SITE LANDSCAPE AREA REQUIRED	4,808 S.F.
TOTAL SITE LANDSCAPE AREA PROVIDED	7,120 S.F.
STREET YARD LANDSCAPING	
15% OF THE STREET YARD SHALL BE IN PERMANENT LANDSCAPE	
SILVERADO TRAIL STREET YARD AREA	23,212 S.F.
15% STREET YARD AREA REQUIRED (23,212 x 15%)	3,482 S.F.
STREET YARD AREA PROVIDED	4,640 S.F.
STREET FRONTAGE LANDSCAPE BUFFER	
20' LANDSCAPE BUFFER REQUIRED ALONG MAJOR THOROUGHFARES WITH 1 CANOPY TREE PER 40 L.F. OF BUFFER.	
SILVERADO TRAIL FRONTAGE L.F.	234.88 L.F.
REQUIRED THOROUGHFARE TREES (235 / 40 = 5.9)	6 TREES
THOROUGHFARE TREES PROVIDED	6 TREES

IRRIGATION NOTE
 ALL REQUIRED LANDSCAPE AREAS SHALL BE PROVIDED WITH AN AUTOMATIC UNDERGROUND IRRIGATION SYSTEM WITH RAIN AND FREEZE SENSORS, AND SAID IRRIGATION SYSTEM SHALL BE DESIGNED BY A QUALIFIED PROFESSIONAL AND INSTALLED BY A LICENSED IRRIGATOR.

Date:	
Revisions:	
#	
Issued For:	CONSTRUCTION
Job No.	21/26
Scale	1" = 20'-0"
Drawn By:	JDG
Date	11-21-2021

LARGE TREES

QUANTITY	SYMBOL	COMMON NAME	SCIENTIFIC NAME	SIZE & CONDITION
8		CEDAR ELM	Ulmus crassifolia	4" caliper, 12' Ht. / 5'-6" spread, B4B or container, straight trunk.
2		PISTACHE	Pistachio chinensis	4" caliper, 12' Ht. / 5'-6" spread, B4B or container, straight trunk.
4		CHINKAPIN OAK	Quercus muhlenbergii	4" caliper, 12' Ht. / 5'-6" spread, B4B or container, straight trunk.

ORNAMENTAL TREES

QUANTITY	SYMBOL	COMMON NAME	SCIENTIFIC NAME	SIZE & CONDITION
5		TUSCARORA GRAPE MYRTLE	Lagerstroemia indica 'Tuscarora'	1" caliper per trunk, 3 trunk min., 8' Ht. / 3'-4" spread, 30 gallon container.
2		VITEK	Vitek agnus-castes	1" caliper per trunk, 3 trunk min., 8' Ht. / 3'-4" spread, 30 gallon container.

SHRUBS

QUANTITY	SYMBOL	COMMON NAME	SCIENTIFIC NAME	SIZE AND CONDITION
18		NELLIE R. STEVENS HOLLY	Ilex cornuta 'Nellie R. Stevens'	15 gallon, 5' Ht./8' spread min., full, bushy specimen. Planted at 3' O.C.
20		ROSE CREEK ABELIA	Abelia grandiflora 'Rose Creek'	5 gallon, 16"-18" Ht./18"-20" spread, full, bushy, specimen
54		DWARF BURFORD HOLLY	Ilex cornuta 'Burfordii nana'	5 gallon, 20"-24" Ht./18"-20" spread, full, bushy, specimen
15		HARBOUR DWARF NANDINA	Nandina domestica 'Harbour Dwarf'	3 gallon, 12"-14" Ht./18"-20" spread, full, bushy, specimen
14		OBSESSION NANDINA	Nandina domestica 'Selka'	3 gallon, 16"-18" Ht./18"-20" spread, full, bushy, specimen
74		BORDEAUX DWARF YAUPON HOLLY	Ilex vomitoria 'Coneaux'	3 gallon, 12"-14" Ht./18"-20" spread, full, bushy, specimen
50		SUNSHINE LIGUSTRUM	Ligustrum sinense 'Sunshine'	3 gallon, 16"-18" Ht./18"-20" spread, full, bushy, specimen

TURF GRASS

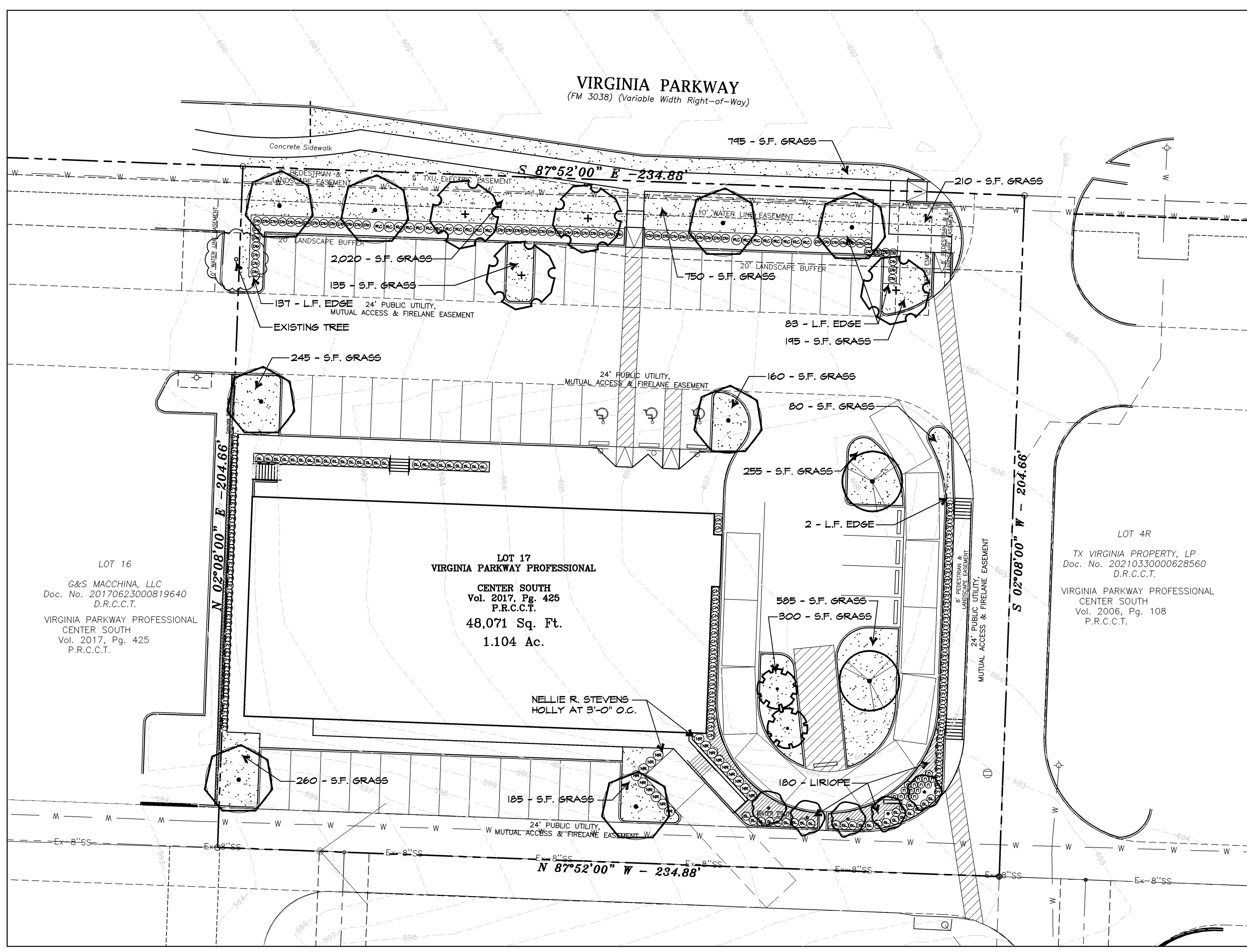
6,175 S.F.		S.F. GRASS	Cynodon dactylon	Solid seed
		BERMUDA GRASS		

GROUNDCOVER / MISCELLANEOUS

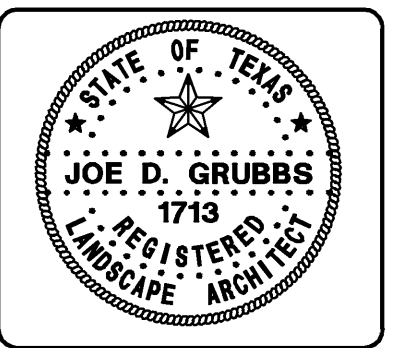
180		BIG BLUE LIRIOPE	Liriope muscari 'Big Blue'	1 gallon @ 12" O.C.
222 L.F.		RYERSON COMMERCIAL GRADE STEEL EDGE		

ALL LANDSCAPE BEDS SHALL BE EXCAVATED 2" IN DEPTH AND SOIL REMOVED, THEN FILLED WITH 2" OF "PROFESSIONAL BEDDING SOIL" FROM LIVING EARTH TECHNOLOGY AND TILLED TO THE DEPTH OF 4".
 ALL LANDSCAPE BEDS AND TREE WELLS SHALL RECEIVE A TOP DRESSING OF 3" DEEP "FINE SHREDDED HARDWOOD MULCH" FROM LIVING EARTH TECHNOLOGY.

LANDSCAPE CONTRACTOR TO VERIFY ALL QUANTITIES



Virginia Parkway Professional
 Center South - Lot 17
 McKinney Texas



Lot 17
 Landscape Plan

Sheet Number:
 L1
 of L2 Sheets

