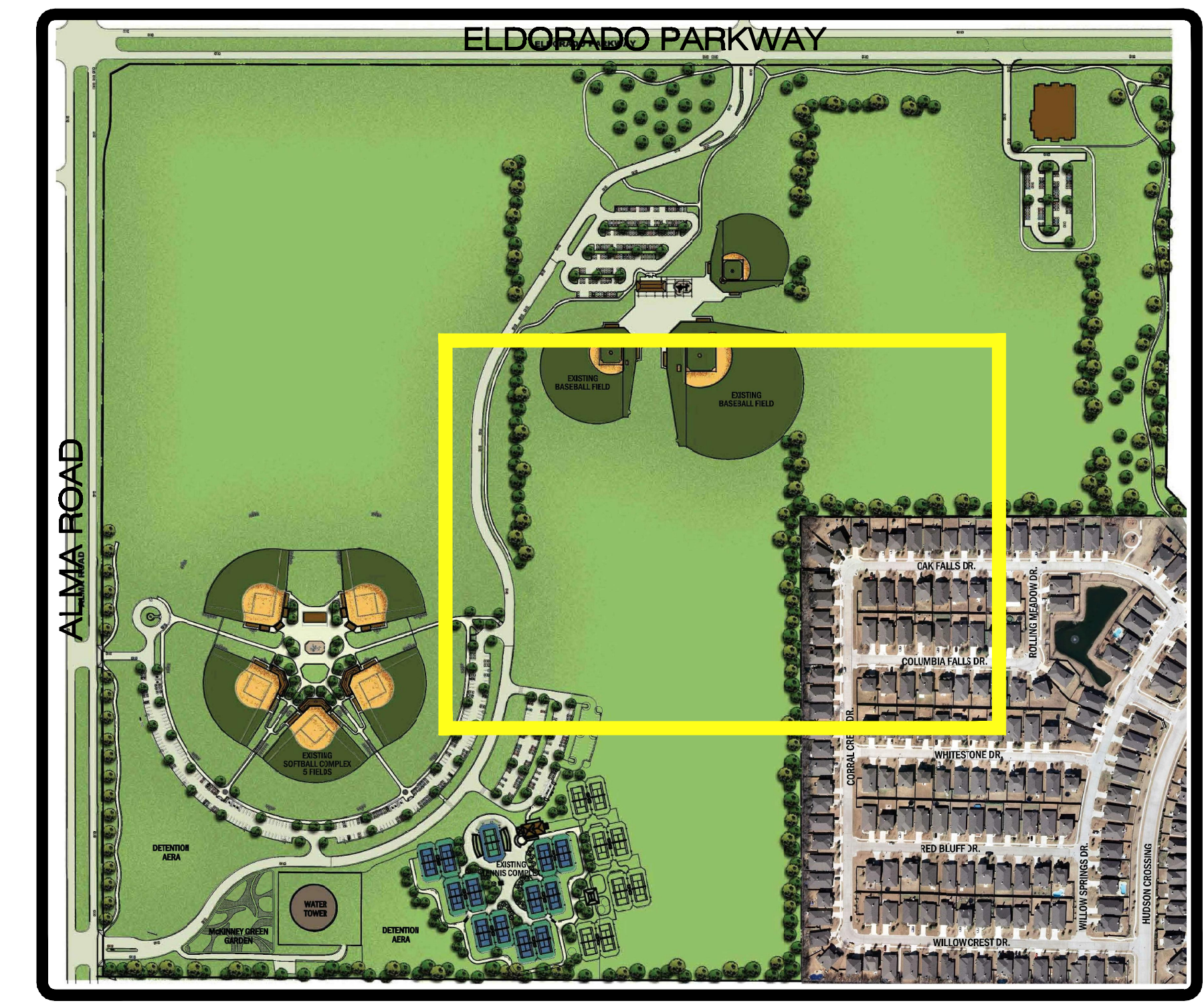
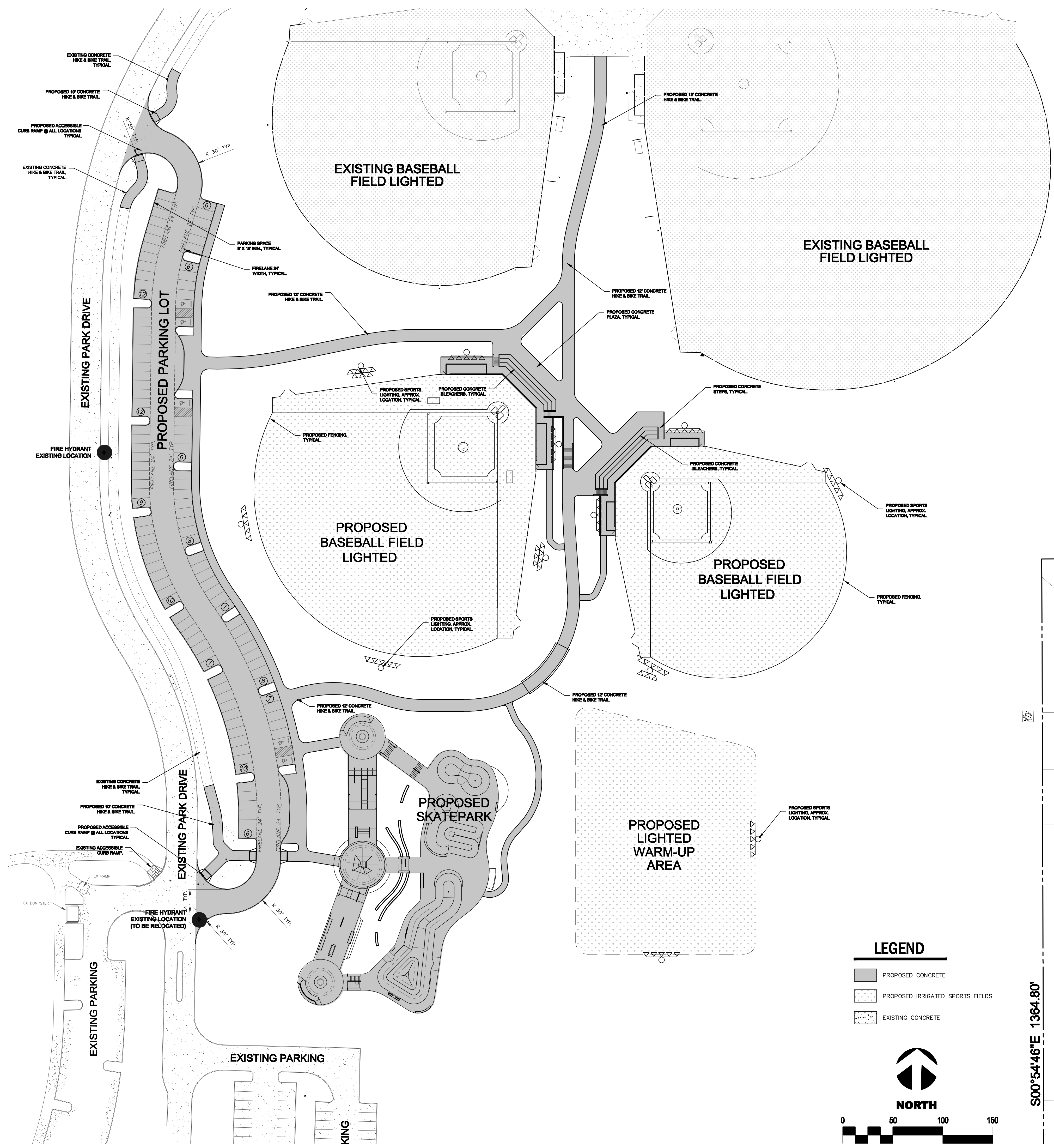
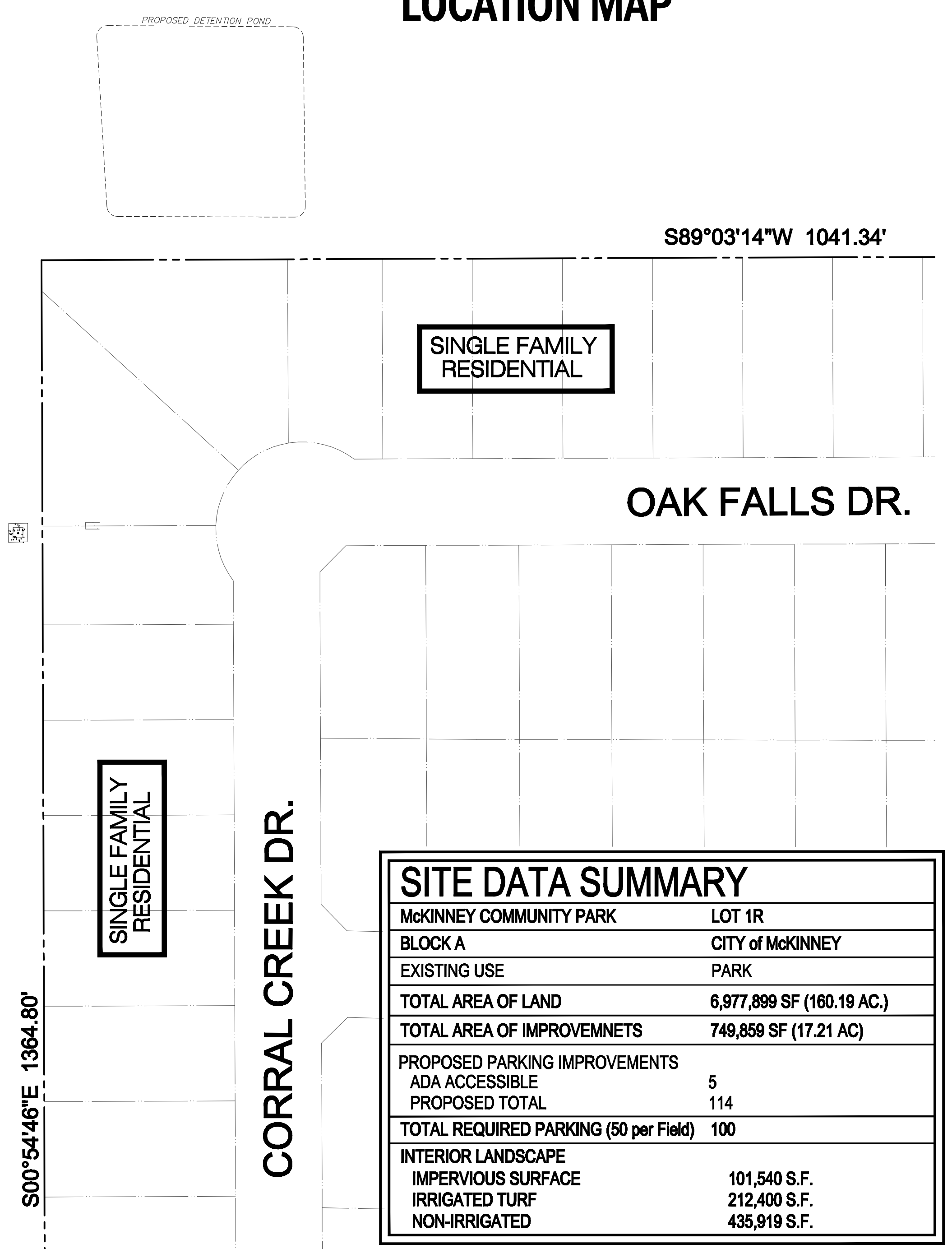


© These drawings are the sole property of LanArc Design Inc. The use of these drawings is hereby restricted to the original site for which they were prepared. Reproduction or reuse of these drawings in whole or in part without written permission of LanArc Design Inc. is strictly prohibited.



LOCATION MAP



SITE DATA SUMMARY	
McKINNEY COMMUNITY PARK	LOT 1R
BLOCK A	CITY OF McKINNEY
EXISTING USE	PARK
TOTAL AREA OF LAND	6,977,899 SF (160.19 AC.)
TOTAL AREA OF IMPROVEMENTS	749,859 SF (17.21 AC)
PROPOSED PARKING IMPROVEMENTS	
ADA ACCESSIBLE	5
PROPOSED TOTAL	114
TOTAL REQUIRED PARKING (50 per Field)	100
INTERIOR LANDSCAPE	
IMPERVIOUS SURFACE	101,540 S.F.
IRRIGATED TURF	212,400 S.F.
NON-IRRIGATED	435,919 S.F.

LIGHTING NOTE:
The lighting for the subject property will be constructed in conformance with the Chapter 58 of the Lighting and Sign Regulations of the City of McKinney Code of Ordinances.

LANARC DESIGN INC.
 LANDSCAPE ARCHITECTURE
 808 South College Street
 Suite 223
 McKinney, Texas 75089
 Ph: 214.733.8805
 Fx: 214.733.8806
 www.lanarcdesign.com

**GABE NESBITT COMMUNITY PARK
 BASEBALL & SKATEPARK**
 CITY OF McKINNEY, PARKS, RECREATION
 AND OPEN SPACE DEPARTMENT

PROJECT:

REVISIONS:

Number	Date
One	5.7.12
Two	5.29.12
Three	

DATE: MAY 29, 2012

TITLE: SITE PLAN

SHEET: SP-1