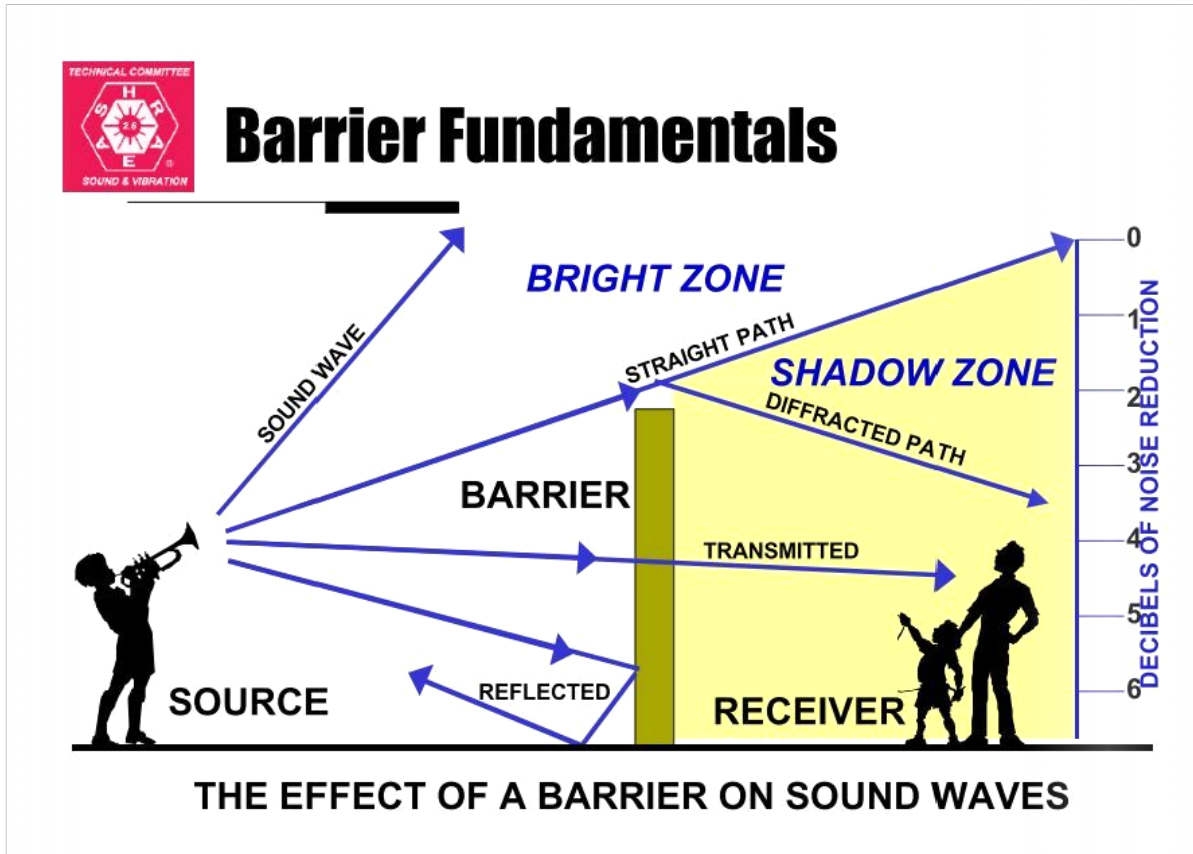
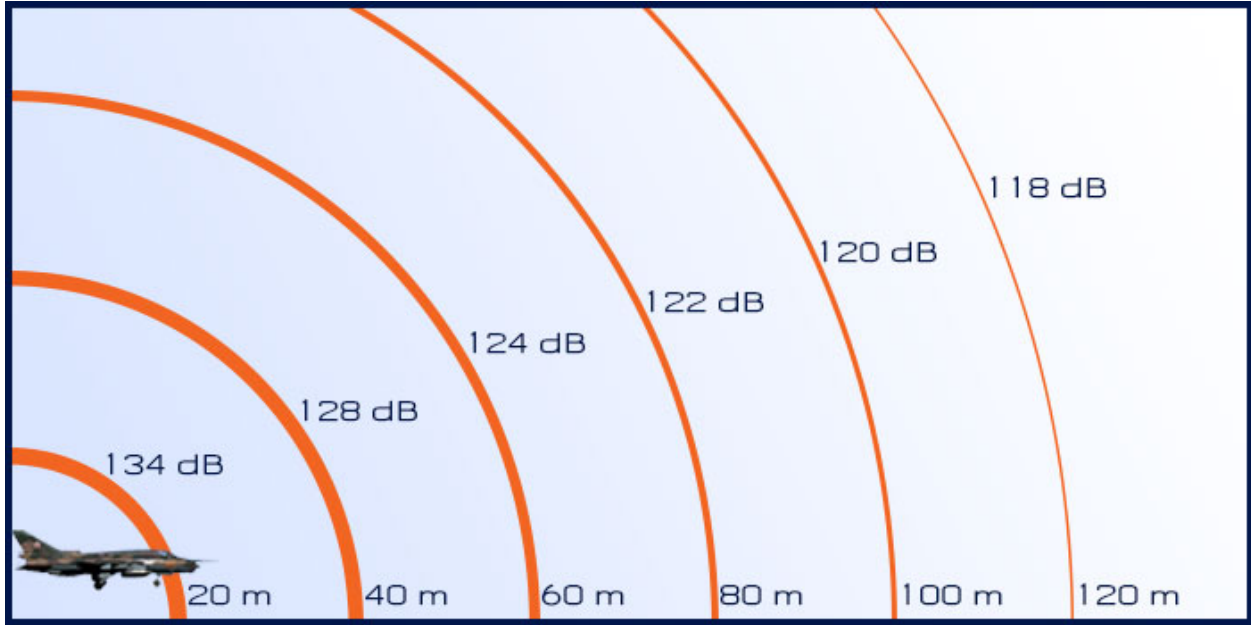


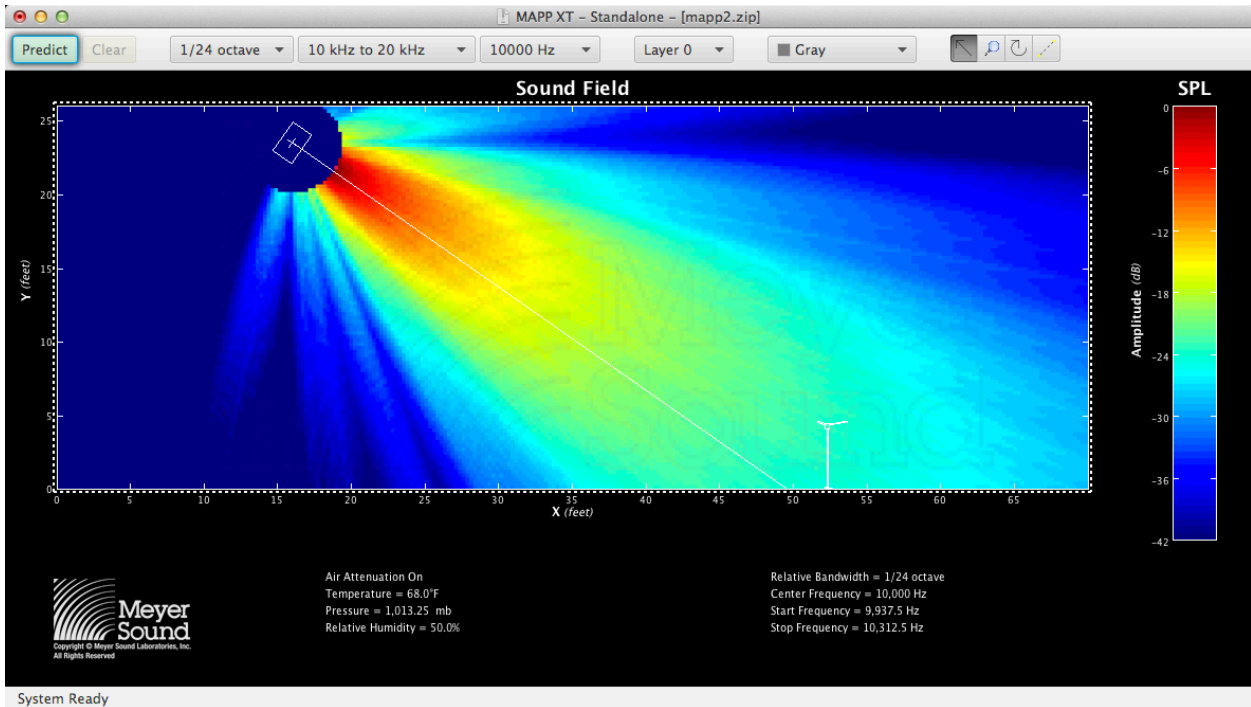
Significant thought, effort, and sensitivity is being placed on the design, locations, and direction of the proposed stage. We believe these efforts will reflect in a sound reduction in the surrounding neighborhood.



A sound barrier is a solid structure that intercepts the direct sound path from a sound source to a receiver. It reduces the sound pressure within its shadow zone. Barriers should be constructed of solid, not porous material. Material includes pre cast concrete. We are providing a concrete block sound barrier and a new brewery building that will act as a sound barrier.



As distance from the sound source increases, the decibels decrease. There are minimal residences within 500' from the sound source for events. Residential areas are only on south and east sides. Since the southeast adjacent corner is undeveloped, the east side residential is actually behind the direction of the sound. While the south residential area is within the direction of the sound cone, it will be protected by the 60' new brewery acting as a sound barrier.



Speakers are directional and the direction of sound can be fine-tuned as required to provide a cone of sound to provide a good listening experience for events, but lower levels of sound for surrounding residences.