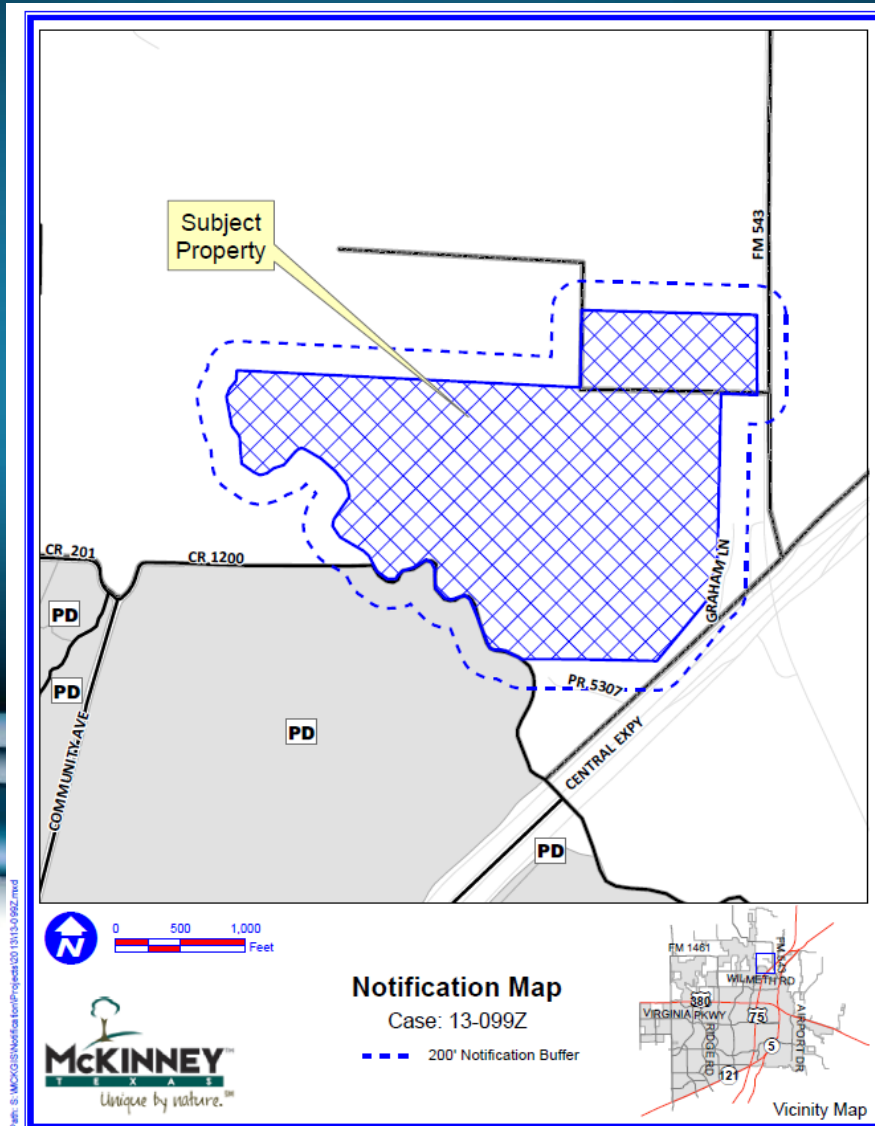


Case No. 13-099Z

**GENERALLY LOCATED NORTH AND SOUTH OF
FUTURE F.M. 543 AND WEST OF U.S. HIGHWAY 75
(CENTRAL EXPRESSWAY)**

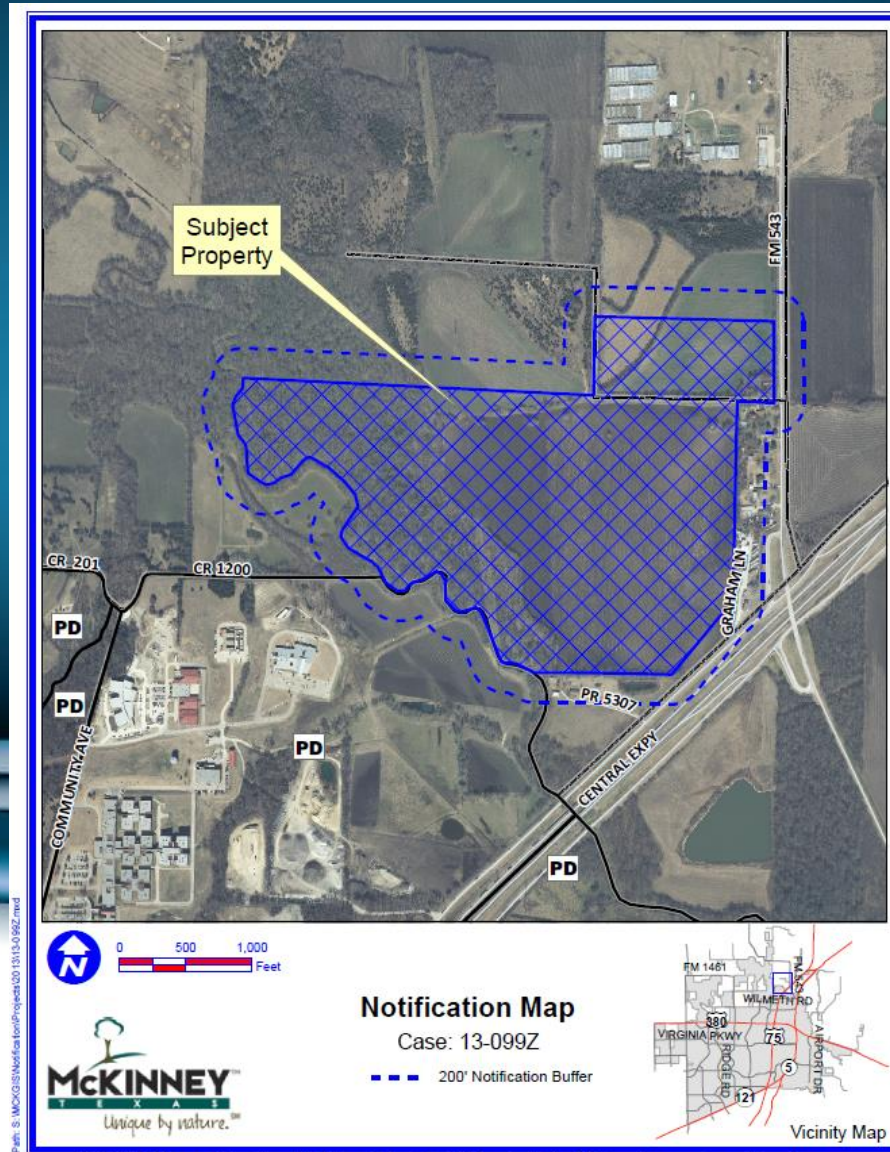


Location Map



DISCLAIMER: This map and information contained in it were developed exclusively for use by the City of McKinney. Any use or reliance on this map by anyone else is at that party's risk and without liability to the City of McKinney, its officials or employees for any discrepancies, errors, or variances which may exist.

Aerial Exhibit



Path: S:\MCKINNEY\Info\for\Project\13-099Z.mxd

DISCLAIMER: This map and information contained in it were developed exclusively for use by the City of McKinney. Any use or reliance on this map by anyone else is at that party's risk and without liability to the City of McKinney, its officials or employees for any discrepancies, errors, or variances which may exist.

