

# Painted Tree North Annexation and Zoning

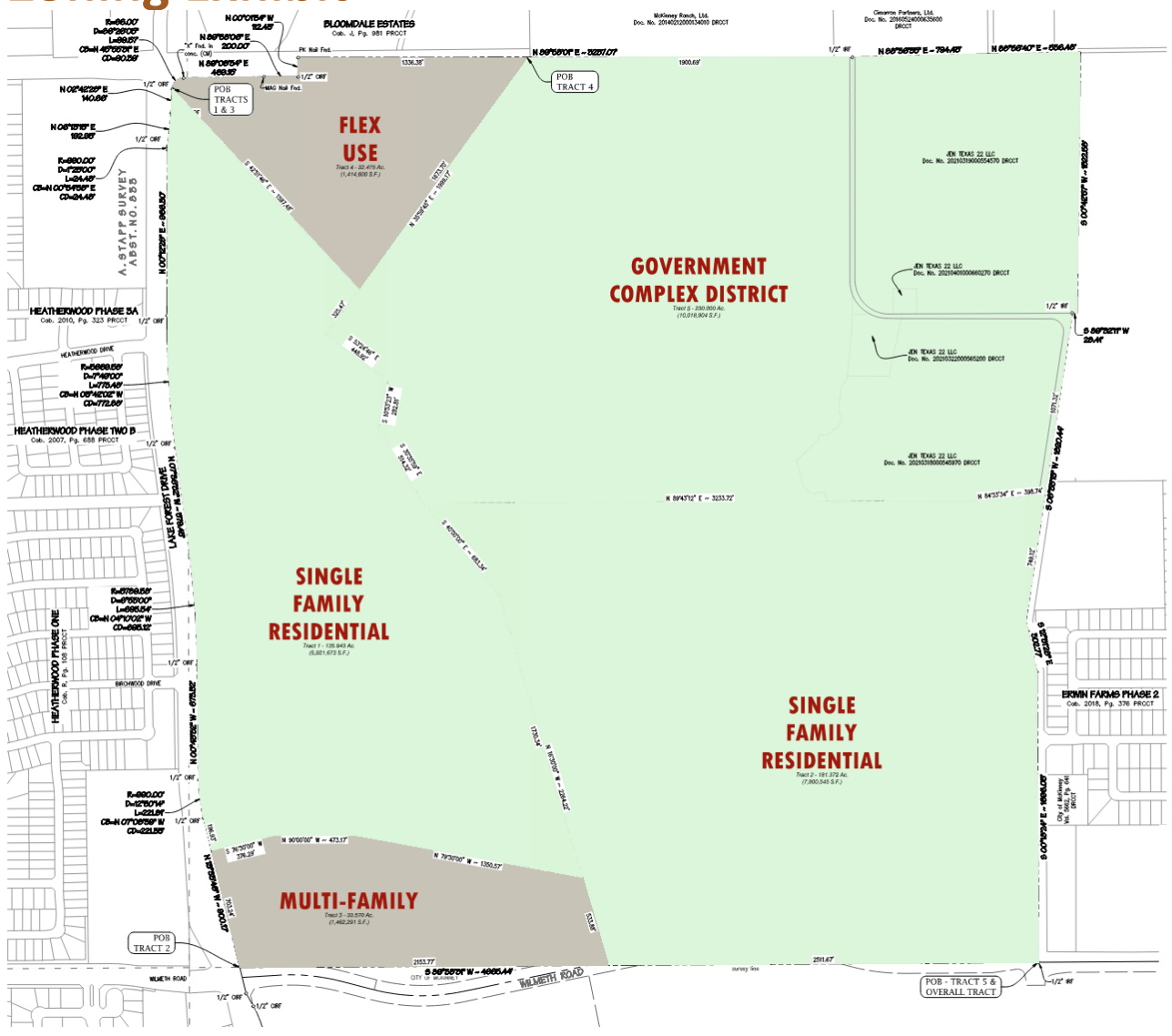
21-0006A (Annexation)

21-0054Z (Zoning)



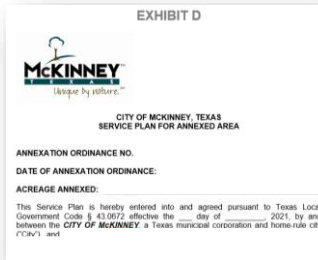


# Proposed Zoning Exhibit

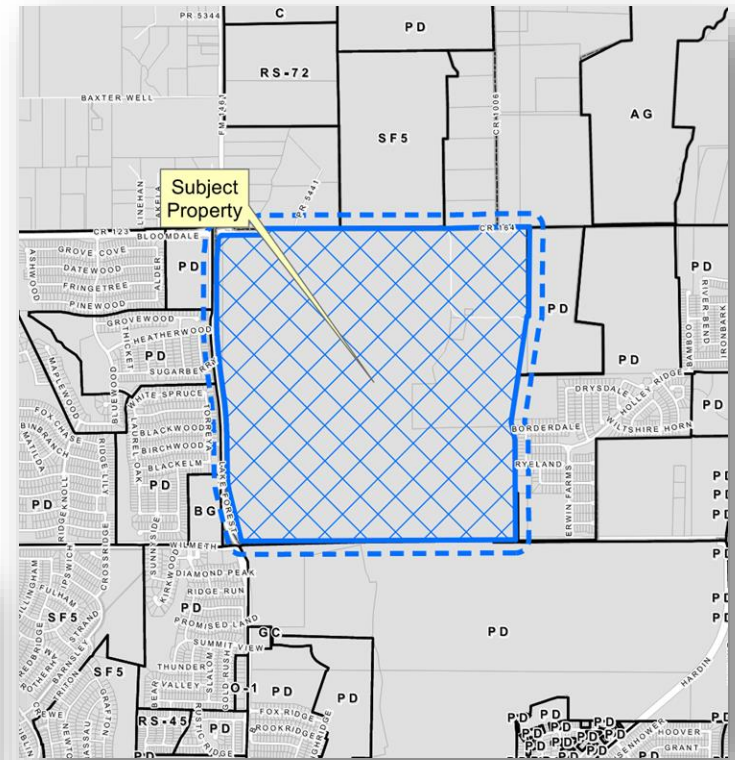


## ANNEXATION ITEMS/INFORMATION

- Annexation Ordinance, including Municipal Services Plan

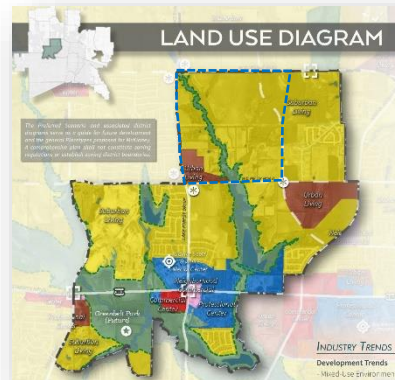


- Annexation Facilities Agreement



## ZONING ITEMS/INFORMATION

- Proposed Zoning: "PD" – Planned Development District
  - Single Family Residential Uses
  - Multi-Family Residential Uses
  - Commercial Uses



## DEVELOPMENT AGREEMENT AND ANNEXATION ITEMS

- Impact Fee Credits
- Residential Street Trees
- Roadway Escrow
- Park Maintenance
- Architectural Standards

