

**WILLIAMS DESIGN GROUP**  
 LAND PLANNING • LANDSCAPE ARCHITECTURE  
 4100 Edwards Parkway, Suite 200, Houston, Texas 77070  
 P: (469) 406-9431 E: williams@wdsgroup.com



PLAN TITLE:  
**LANDSCAPE PLAN**

PROJECT TITLE:  
**SKYLINE / 380 RETAIL**  
 MCKINNEY, TEXAS

REV. DATE	REVISION DESCRIPTION
11-2-2018	PER CITY COMMENTS

SHEET NO.:  
**L1.01**

**LANDSCAPE REQUIREMENT CALCULATIONS**

Required Percentage of Total Site Landscaping	Min. 10%
Site Area	50,976 s.f.
Proposed Landscaping Area	8,046 s.f.
Percentage of Site to be in Living Landscape	15.79%
Required # of Min. 4" Cal./12" (U.S. Hwy. 380)	1 per 40'
Length of Street Frontage	194.61'
Number of Trees Required	5
Number of Trees Provided	5
Required Percentage of Street Yard Landscaping	Min. 15%
Street Yard Area	24,739 s.f.
Street Yard Landscaped Area	6,553 s.f.
Percentage of Street Yard Landscaped	26.48%
Number of Site Parking Spaces	52
Number of Trees Required 1 Per 10 Spaces	6
Number of Parking Lot Trees Provided	8

PROPOSED TREES	Symbol	Key	Name	Size	Spacing
LE		Elm, Albicecoba	3 Gal./12 H.	As Scaled	
SNO		Oak, Shumard Red Quercus shumardii	4" Cal./12 H.	As Scaled	
DO		Oak, Durand Quercus shumardii	4" Cal./12 H.	As Scaled	
PROPOSED PLANTS					
DBH		Holly, Dwarf Burford Ilex cornuta Dwarf Burford	3 Gal./2 H.	36"	
KA		Abelia, Kaleidoscope Abelia grandiflora Kaleidoscope	3 Gal.	36"	
NSH		Holly, Nellie R. Stevens Holly, Nellie R. Stevens	7 Gal./3 H.	36"	
DWH		Holly, Stokes's Dwarf Yucca ilex var. minima Stokes's Dwarf	3 Gal./2 H.	36"	
DWM		Holly, Dwarf Yucca Myrica carolinensis var. minima	3 Gal./2 H.	42"	
AMG		Grass, Adagio Maiden Miscanthus sinensis Adagio	3 Gal.	36"/As Scaled	
GNG		Grass, Gulf Muhly Muhlenbergia capillaris	1 Gal.	24"/As Scaled	
MFG		Grass, Russian Masala tenuisquamis	1 Gal.	18" or as scaled	
RS		Sage, Russian Perovskia atriplicifolia	3 Gal.	30"	
AS		Sage, Autumn Salvia greggii	3 Gal.	30"	

Common Bermuda Solid Sod or Hydrograsses - 3,910 s.f. +/- Shown

Stone Bed - 1,330 s.f. +/- Shown  
 To be New Mexico River Rock, 2" to 4" Stone Size, 6" Depth.  
 Exposed areas bordered to a depth of 3" below final grade.  
 Fabric: Blend stone into cedar mulch planting areas as shown.  
 Fill stone back from base of plant and trees at least 4 inches.

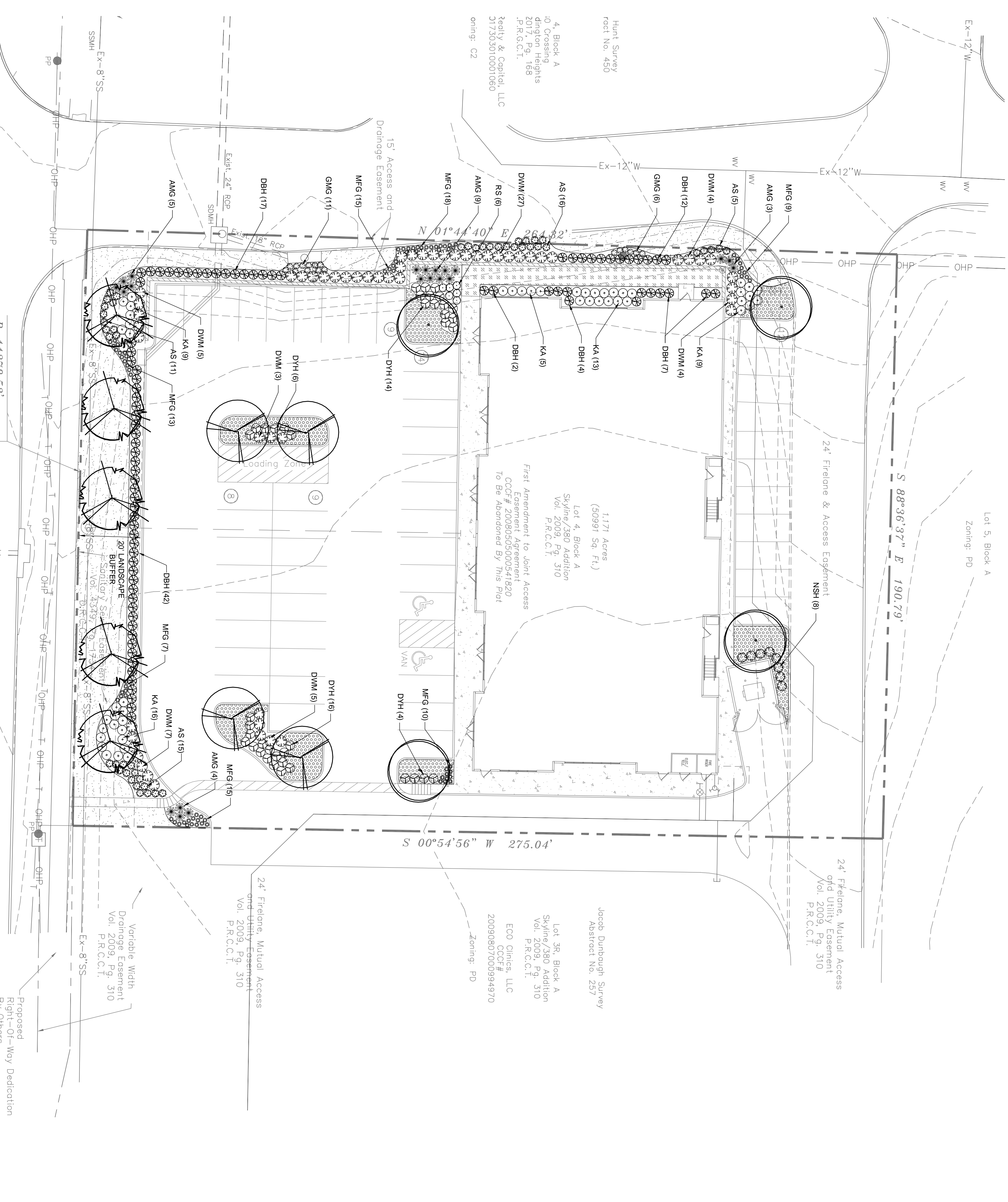
Decomposed Granite, Brown - 540 s.f. +/- Shown  
 To be Compacted to 3" Depth, Use 4" Brown, Commercial Brand Brand as Edge Restraint.

Degrade bed between planting areas - To be 4" Brown, Commercial Grade, Steel Edging

Note:  
 The Contractor shall verify all quantities. Contractor responsible for providing all plant material as indicated by symbols or plan.

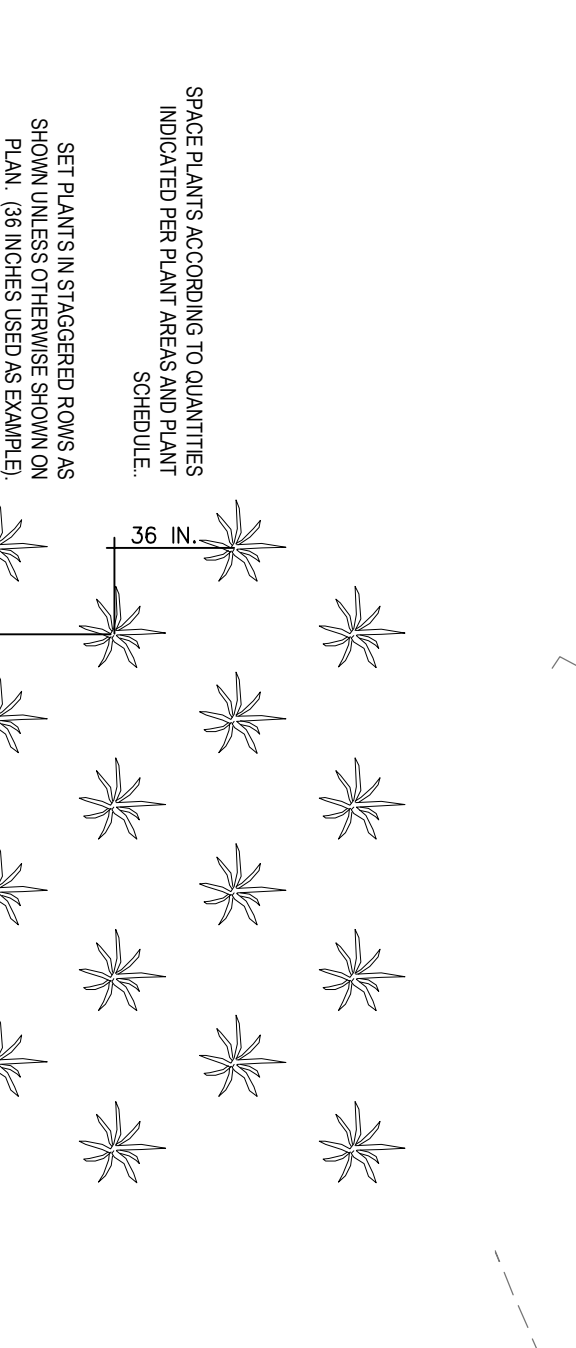
Note:  
 The Contractor shall verify water restrictions with the City of McKinney at time of planting. Should water restrictions not allow for hydromulch, hydroseeding or spraying (Stage 3 and 4 water restrictions), an approved alternative for grassing shall be installed.

Note:  
 All landscaped areas shown on plan shall be irrigated by an automatic underground with rain and freeze sensors and evapotranspiration (ET) weather based controller and irrigation system shall be designed by a qualified professional and installed by a qualified irrigator.

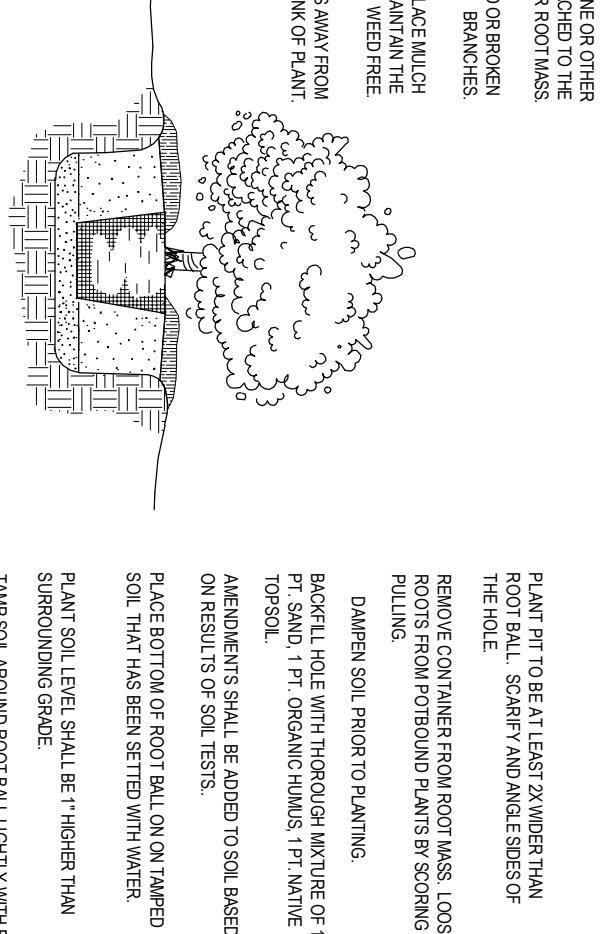


$R = 1378.52'$   
 $L = 194.61'$   
 $CB = N 88°35'55'' W$   
 $CL = 194.61'$

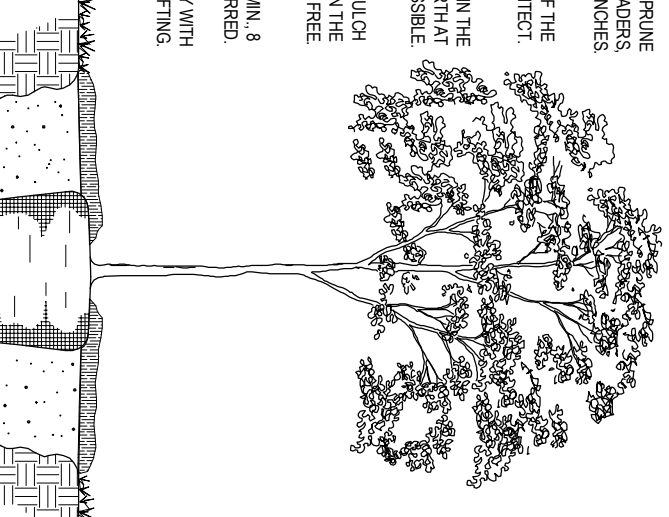
**U.S. HIGHWAY NO. 380**  
 (Variable Width Right-Of-Way)  
 D.F. Houston to State of Texas  
 Vol. 313, Pg. 272  
 D.R.C.C.T.



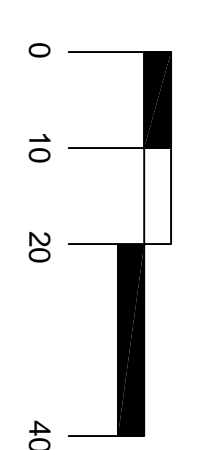
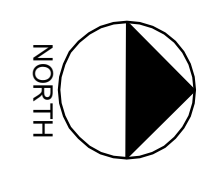
**PLANT SPACING DETAIL**  
 NOT TO SCALE



**SHRUB PLANTING DETAIL**  
 NOT TO SCALE



**TREE PLANTING DETAIL**  
 NOT TO SCALE



GRAPHIC SCALE: 1" = 20'



CALL BEFORE YOU DIG: 811