

Land Use and Tax Base Summary for Module 15

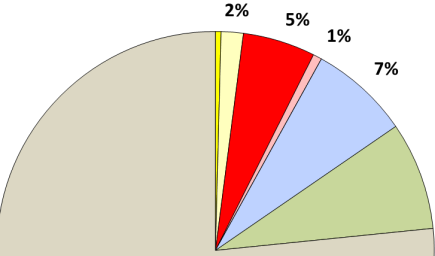
ZONE2019-0068 Rezoning Request

Land Use Summary

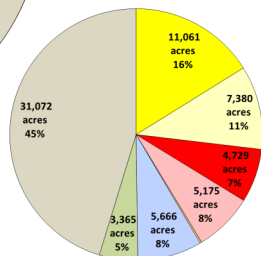
Below is a summary of existing and anticipated land uses for this module as of January 2018 based on information obtained from the Collin Central Appraisal District's certified tax roll in conjunction with approved zoning requests (for parcels

	Acres
Residential	16.0
Vacant Residential	63.9
Total Residential	79.9 (2%)
Non-Residential	209.0
Vacant Non-Residential	25.6
Total Non-Residential	234.6 (6%)
Mixed-Use	0.0
Vacant Mixed-Use	0.0
Total Mixed-Use 1	0 (0%)
Institutional (non-taxable)	287.8
Total Institutional (non-taxable)	287.8 (7.3%)
Agricultural/Undetermined	311.4
Total Agricultural/Undetermined 2	311.4 (7.9%)
Total Acres (city limits only)	913.7 (23.3%)
Extraterritorial Jurisdiction (ETJ)	2,992.3
Total Extraterritorial Jurisdiction 3	2,992.3 (76.6%)
Total Acres	3,906.1

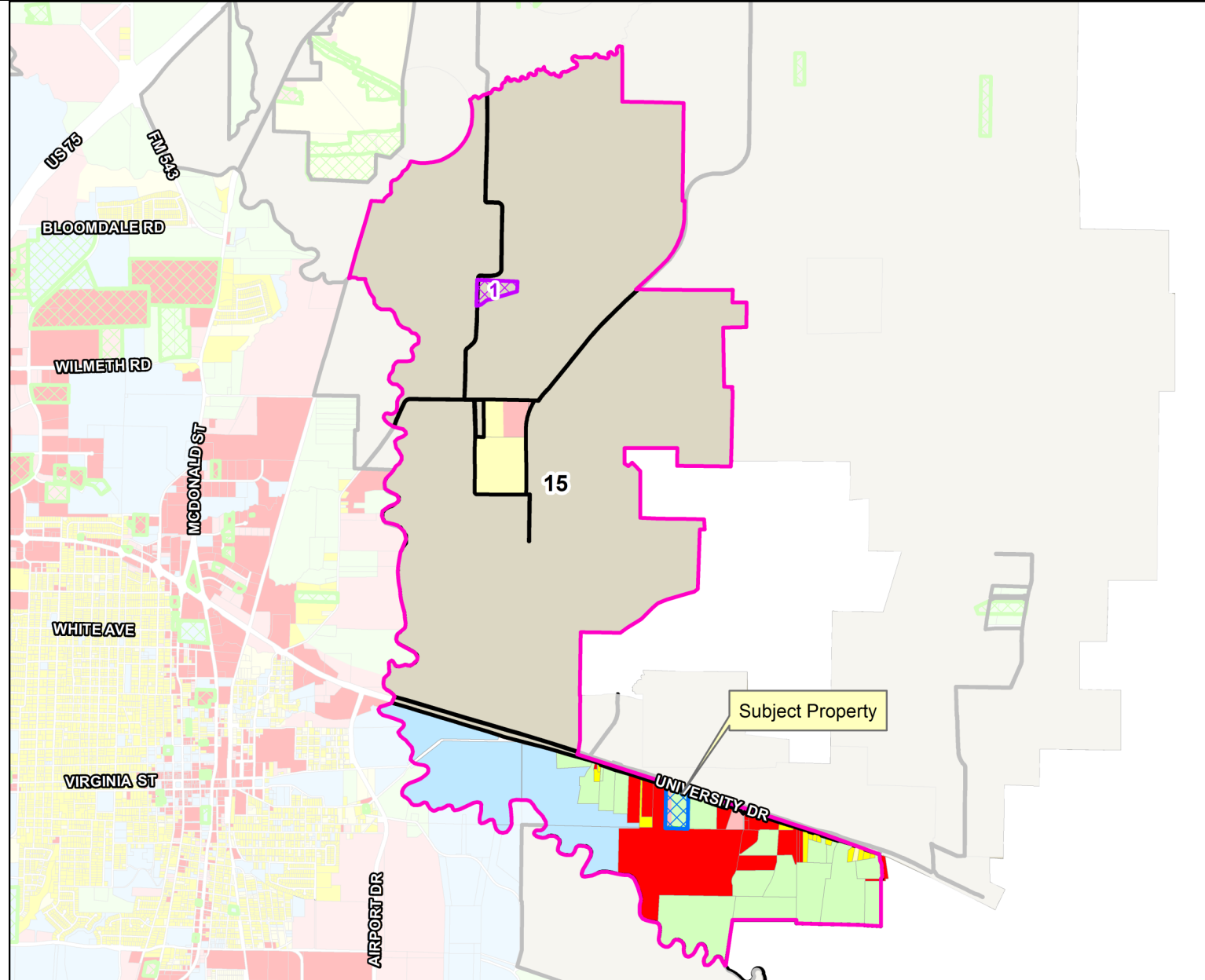
Module 15



Citywide and ETJ

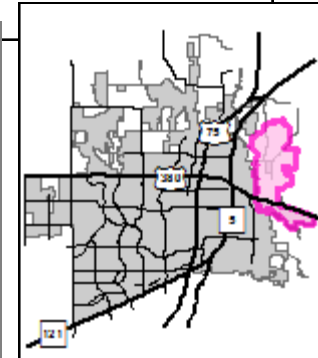


Module 15



Approved Projects Impacting Land Use or Tax Base (2017, 2018, 2019) ⁴

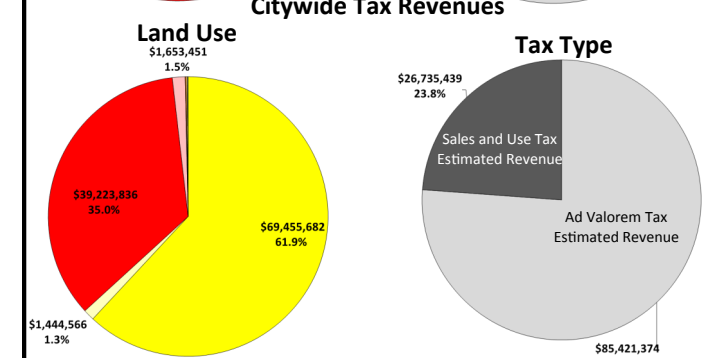
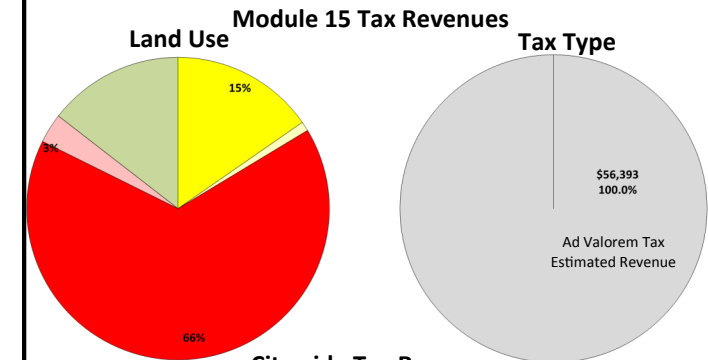
Map ID	Case Number	Project Description	Acres
	1 PLAT2017-0000284	RP - SWIM ADDITION - LOTS 1 AND 2, BLOCK A - 2172 COUNTY ROAD 338	12.00



Tax Base Summary⁵

Based on the existing land uses in this module, below is a summary of the estimated tax revenues as of January 2018. These revenues are aggregated from Collin Central Appraisal District (for Ad Valorem taxes) and from the Texas Comptroller of Public Accounts (for Sales and Use taxes).

Land Use	Ad Valorem	Sales Tax	Total
Residential	\$ 8,655	\$ -	\$ 8,655
Non-Residential	\$ 37,207	\$ -	\$ 37,207
Mixed-Use	\$ -	\$ -	\$ -
Tax Revenue from Developed Land Uses	\$ 45,862	\$ -	\$ 45,862
Vacant Residential	\$ 566	\$ -	\$ 566
Vacant Non-Residential	\$ 1,784	\$ -	\$ 1,784
Vacant Mixed-Use	\$ -	\$ -	\$ -
Agricultural/Undetermined	\$ 8,181	\$ -	\$ 8,181
Undeveloped Land Uses	\$ 10,531	\$ -	\$ 10,531
Grand Total (city limits only)	\$ 56,393	\$ -	\$ 56,393



NOTE: In general, land uses that generate tax revenues less than 1% of total revenues are not shown on chart.

1. Mixed-Use land uses reflect those parcels for which zoning allows for residential and/or non-residential horizontal or vertically-integrated uses.
 2. Agricultural/Undetermined land uses reflect those parcels with agricultural zoning for which no future use is currently defined.
 3. Properties located in the ETJ are not included in the Land Use Summary and the Tax Base Summary because they fall outside of the city's land use and taxing jurisdiction.
 4. Zoning, site plan and record plat cases approved after the certified tax roll of January 1, 2018 and change land use and/or vacancy status. These cases are not included in the Land Use Summary or the Tax Base Summary.
 5. Institutional (non-taxable) properties are not included in the Tax Base Summary because these properties do not generate taxes. Estimated tax revenues do not include any property exemptions, delinquencies, etc. and; therefore, may not reflect actual collection amounts.

DISCLAIMER: This map and information contained in it were developed exclusively for use by the City of McKinney. Any use or reliance on this map by anyone else is at that party's risk and without liability to the City of McKinney, its officials or employees for any discrepancies, errors or variances which may exist.