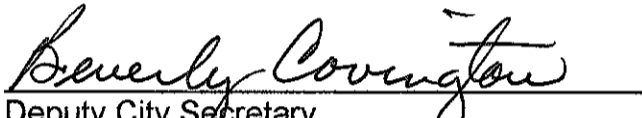
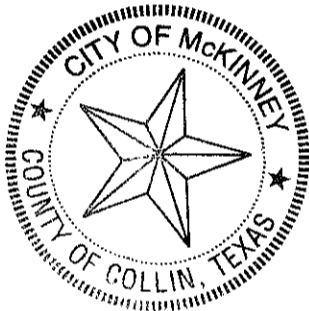




I, Beverly Covington, Deputy City Secretary of the City of McKinney, Texas, hereby certify that the attached is a true and correct copy of City of McKinney Ordinance 2006-12-141, approved by McKinney City Council on December 5, 2006.

To certify which, witness my hand and seal of office this 22nd day of December, 2006.

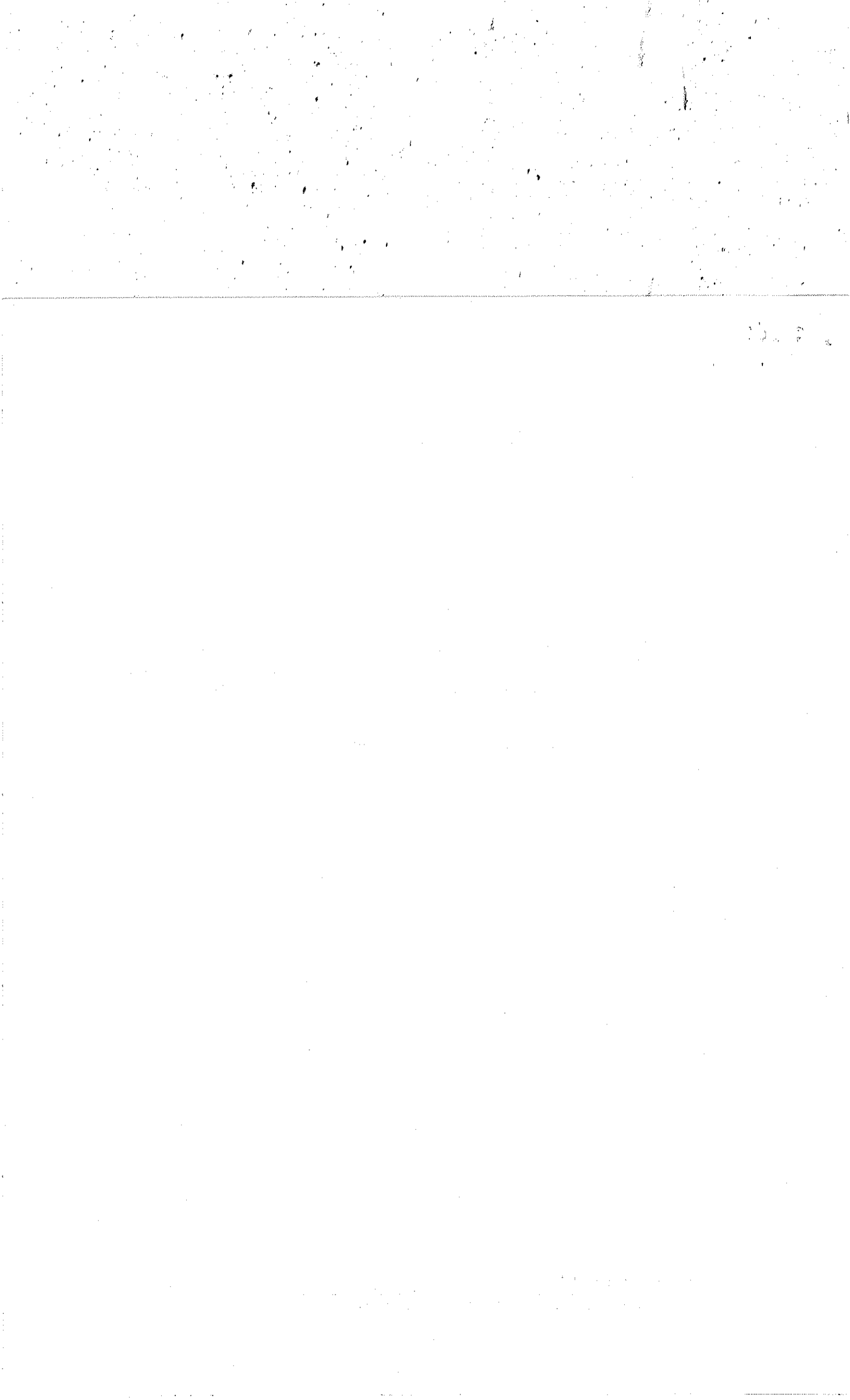

Deputy City Secretary
City of McKinney, Texas



CITY OF McKINNEY

P.O. Box 517 • McKinney, Texas 75070 • Metro 972-562-6080

www.mckinneytexas.org



ORDINANCE NO. 2006-12-141

AN ORDINANCE OF THE CITY COUNCIL OF THE CITY OF MCKINNEY, TEXAS CONSENTING TO THE CREATION OF A MUNICIPAL UTILITY DISTRICT ENCOMPASSING LAND LOCATED WHOLLY WITHIN THE EXTRATERRITORIAL JURISDICTION OF THE CITY; AND PROVIDING FOR AN EFFECTIVE DATE.

WHEREAS, the City of McKinney, Texas (the "City") is a home-rule city located in Collin County, Texas; and

WHEREAS, MA-BBO Five, L.P., a Texas limited partnership, and MA BB Owen, L.P., a Texas limited Partnership (collectively, the "Owner"), is the owner of approximately 830.764 acres of land located in the extraterritorial jurisdiction ("ETJ") of the City, Collin County, Texas and described by metes and bounds on Exhibit A (the "Property"); and

WHEREAS, Section 42.042 of the Texas Local Government Code and Section 54.016 of the Texas Water Code requires that an applicant request a city's written consent to create a municipal utility district within the city's ETJ; and

WHEREAS, on December 5th, 2006, Owner filed with the City Secretary's Office a petition entitled "Petition Requesting Consent for the Creation of a Municipal Utility District" requesting the consent of the City to the creation of McKinney Municipal Utility District No. 2 (the "District") to cover the Property, a copy of which petition is attached as Exhibit B.

WHEREAS, the Property lies wholly within the ETJ of the City of McKinney, Texas, and no portion of the Property lies within the corporate limits or ETJ of any other town or city.

NOW THEREFORE, BE IT ORDERED BY THE CITY COUNCIL OF THE CITY OF MCKINNEY, TEXAS THAT:

Section 1. The City consents to the creation of the District. The City Manager is hereby instructed to execute, from time to time, such additional documents, if any, that may be required to evidence the City's consent and to fulfill the purposes for which the consent is given, including, but not limited to, the execution by the City Manager or behalf of the City of such further documents or instruments as may be requested, from time to time, by the owners of the Property, the District, the Texas Commission on Environmental Quality (the "TCEQ"), the Texas Attorney General, or by any other governmental agency or political subdivision having jurisdiction over the District or any bonds issued by the District or as may be required by any special legislation adopted, from time to time, by the Texas Legislature and affecting the District ("Special Legislation").

Section 2. The District shall have the right to exercise all rights, powers, and authority granted to a municipal utility district by the laws of the State of Texas, as amended, by any Special Legislation, and under the rules of the TCEQ or any other governmental agency having jurisdiction over the District.

Section 3. Subject to satisfaction of the condition set forth in Section 4 of this Ordinance, the District shall have the right to issue bonds as permitted by the laws of the State of Texas and the rules of the TCEQ and other governmental agencies having jurisdiction over the District.

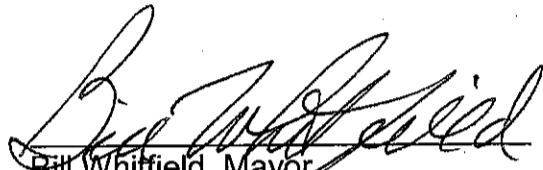
Section 4. The right of the District to issue bonds pursuant to this Ordinance is expressly subject to the execution by the City and the Owner of a development agreement pursuant to Section 212.171 et. seq. of the Texas Local Government Code, which development agreement may include further conditions upon the right of the District to issue bonds. Notwithstanding the foregoing, the City shall not be required to enter into a development agreement.

Section 5. Except as limited by the conditions contained in Section 3 and Section 4 above, the consents granted by this Ordinance are effective immediately. The consents granted by this Ordinance shall be effective to fully satisfy all requirements of the Texas Water Code, as amended, the Texas Local Government Code, as amended, and the rules and regulations of the TCEQ and other governmental agencies having jurisdiction over the District.


Section 6. McKinney City Ordinance No. 2006-06-083, adopted on June 20, 2006, granting consent to the creation of Water Control and Improvement District No. 1, by passage and execution of this Ordinance, is hereby repealed in its entirety with the concurrence of the Owner. The consent granted by the City by that ordinance for the creation of Water Control and Improvement District No. 1 is hereby withdrawn, and shall no longer have any force and effect.

Section 7. This Ordinance takes effect immediately from and after its passage and is accordingly so ordained.

DULY ADOPTED BY THE CITY COUNCIL OF THE CITY OF MCKINNEY, TEXAS ON THE 5TH DAY OF DECEMBER, 2006.


Bill Whitfield, Mayor

ATTEST:


Sandy Hart, CMC
City Secretary
Beverly Covington, CMC
Deputy City Secretary

APPROVED AS TO FORM:

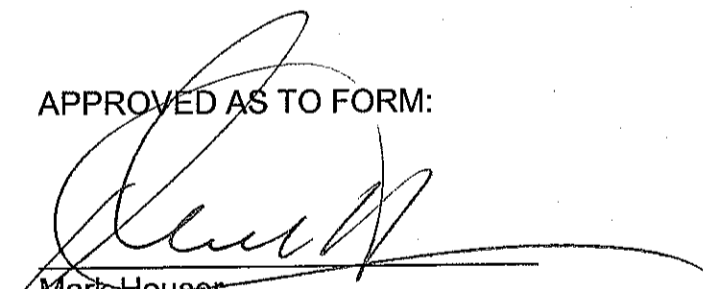

Mark Houser
City Attorney

Exhibit A

METES AND BOUNDS DESCRIPTION OF THE PROPERTY

(1) MUD 2/TRACT A - 423.553 acres

BEING A 423.553 ACRE TRACT OF LAND SITUATED IN THE THOMAS BRUCE SURVEY, ABSTRACT NO. 103, THE THOMAS LINDSAY SURVEY, ABSTRACT NO. 521, COLLIN COUNTY, TEXAS, AND BEING ALL OF A CALLED 106.762 ACRE TRACT OF LAND CONVEYED TO MA-BBO FIVE, LP, BY DEED RECORDED IN COUNTY CLERK'S FILE NO. 20060918001344750, OFFICIAL PUBLIC RECORDS, COLLIN COUNTY, TEXAS, AND BEING ALL OF A CALLED 118.259 ACRE TRACT OF LAND CONVEYED TO MA-BBO FIVE, LP, BY DEED RECORDED IN COUNTY CLERK'S FILE NO. 20060918001344760, OFFICIAL PUBLIC RECORDS, COLLIN COUNTY, TEXAS, AND BEING PART OF A CALLED 1113.084 ACRE TRACT OF LAND CONVEYED TO MA BB OWEN, LP, BY DEED RECORDED IN COUNTY CLERK'S FILE NO. 20060616000829800, OFFICIAL PUBLIC RECORDS, COLLIN COUNTY, TEXAS, SAID 423.553 ACRE TRACT, WITH BEARING BASIS BEING GRID NORTH, TEXAS STATE PLANE COORDINATES, NORTH CENTRAL ZONE, NAD83 (CORS), DETERMINED BY GPS OBSERVATIONS ON JULIAN DAY 320, 2005, CALCULATED FROM DENTON CORS ARP (PID-DF8986), ARLINGTON RRP2 CORS ARP (PID-DF 5387) AND COLLIN CORS ARP (PID-8982), AND BEING MORE PARTICULARLY DESCRIBED BY METES AND BOUNDS AS FOLLOWS:

BEGINNING AT A 5/8 INCH IRON ROD FOUND FOR THE NORTHWEST CORNER OF SAID 106.762 ACRE TRACT AND THE NORTHEAST CORNER OF A 39.06 ACRE TRACT OF LAND DESCRIBED IN A DEED TO THOMAS M. FRIS AS RECORDED IN COLLIN COUNTY CLERK'S FILE NO. 96-0104896, LAND RECORDS, COLLIN COUNTY, TEXAS, SAID POINT ALSO BEING ON THE SOUTH LINE OF A TRACT OF LAND DESCRIBED IN A DEED TO JOHN P. WALDEN & WIFE JANE WALDEN AS RECORDED IN VOLUME 551, PAGE 366 OF THE DEED RECORDS OF COLLIN COUNTY, TEXAS;

THENCE, ALONG COMMON LINES OF SAID 106.762 ACRE TRACT AND SAID WALDEN TRACT, THE FOLLOWING COURSES AND DISTANCES:

SOUTH 89 DEGREES 11 MINUTES 59 SECONDS EAST, A DISTANCE OF 900.54 FEET TO A 5/8 INCH IRON ROD FOUND FOR CORNER;

SOUTH 89 DEGREES 27 MINUTES 53 SECONDS EAST, A DISTANCE OF 161.43 FEET TO A 5/8 INCH IRON ROD WITH YELLOW PLASTIC CAP STAMPED "CARTER BURGESS" SET FOR CORNER;

NORTH 83 DEGREES 20 MINUTES 49 SECONDS EAST, A DISTANCE OF 67.79 FEET TO THE NORTHEAST CORNER OF SAID 106.762 ACRE TRACT AND THE APPROXIMATE CENTERLINE OF EAST FORK OF THE TRINITY RIVER;

THENCE, ALONG THE EAST PROPERTY LINE OF SAID 106.762 ACRE TRACT, AND WITH THE CENTERLINE OF AFORESAID EAST FORK OF THE TRINITY RIVER, THE FOLLOWING COURSES AND DISTANCES:

SOUTH 20 DEGREES 21 MINUTES 50 SECONDS EAST, A DISTANCE OF 147.67 FEET TO A POINT FOR CORNER;

SOUTH 15 DEGREES 11 MINUTES 51 SECONDS EAST, A DISTANCE OF 121.20 FEET TO A POINT FOR CORNER;

SOUTH 53 DEGREES 55 MINUTES 47 SECONDS EAST, A DISTANCE OF 57.30 FEET TO A POINT FOR CORNER;

NORTH 81 DEGREES 40 MINUTES 31 SECONDS EAST, A DISTANCE OF 68.17 FEET TO A POINT FOR CORNER;

NORTH 55 DEGREES 58 MINUTES 51 SECONDS EAST, A DISTANCE OF 70.86 FEET TO A POINT FOR CORNER;

NORTH 50 DEGREES 52 MINUTES 37 SECONDS EAST, A DISTANCE OF 167.34 FEET TO A POINT FOR CORNER;

SOUTH 63 DEGREES 52 MINUTES 45 SECONDS EAST, A DISTANCE OF 76.94 FEET TO A POINT FOR CORNER;

SOUTH 24 DEGREES 20 MINUTES 33 SECONDS EAST, A DISTANCE OF 73.75 FEET TO A POINT FOR CORNER;

SOUTH 19 DEGREES 16 MINUTES 49 SECONDS WEST, A DISTANCE OF 61.92 FEET TO A POINT FOR CORNER;

SOUTH 29 DEGREES 28 MINUTES 37 SECONDS WEST, A DISTANCE OF 67.28 FEET TO A POINT FOR CORNER;

SOUTH 29 DEGREES 53 MINUTES 46 SECONDS WEST, A DISTANCE OF 70.84 FEET TO A POINT FOR CORNER;

SOUTH 04 DEGREES 46 MINUTES 27 SECONDS EAST, A DISTANCE OF 98.68 FEET TO A POINT FOR CORNER;

SOUTH 27 DEGREES 59 MINUTES 37 SECONDS EAST, A DISTANCE OF 72.48 FEET TO A POINT FOR CORNER;

SOUTH 38 DEGREES 58 MINUTES 18 SECONDS EAST, A DISTANCE OF 131.77 FEET TO A POINT FOR CORNER;

SOUTH 03 DEGREES 11 MINUTES 20 SECONDS EAST, A DISTANCE OF 91.41 FEET TO A POINT FOR CORNER;

SOUTH 06 DEGREES 35 MINUTES 41 SECONDS WEST, A DISTANCE OF 188.59 FEET TO A POINT FOR CORNER;

SOUTH 36 DEGREES 55 MINUTES 44 SECONDS EAST, A DISTANCE OF 101.19 FEET TO A POINT FOR CORNER;

SOUTH 77 DEGREES 27 MINUTES 27 SECONDS EAST, A DISTANCE OF 101.27 FEET TO A POINT FOR CORNER;

SOUTH 89 DEGREES 08 MINUTES 21 SECONDS EAST, A DISTANCE OF 137.11 FEET TO A POINT FOR CORNER;

SOUTH 56 DEGREES 41 MINUTES 24 SECONDS EAST, A DISTANCE OF 136.45 FEET TO A POINT FOR CORNER;

SOUTH 41 DEGREES 28 MINUTES 51 SECONDS EAST, A DISTANCE OF 84.90 FEET TO A POINT FOR CORNER;

SOUTH 16 DEGREES 13 MINUTES 08 SECONDS EAST, A DISTANCE OF 239.45 FEET TO A POINT FOR CORNER;

SOUTH 20 DEGREES 49 MINUTES 08 SECONDS WEST, A DISTANCE OF 84.82 FEET TO A POINT FOR CORNER;

SOUTH 38 DEGREES 02 MINUTES 36 SECONDS WEST, A DISTANCE OF 120.85 FEET TO A POINT FOR CORNER;

SOUTH 16 DEGREES 50 MINUTES 36 SECONDS WEST, A DISTANCE OF 106.92 FEET TO A POINT FOR CORNER;

SOUTH 04 DEGREES 08 MINUTES 50 SECONDS WEST, A DISTANCE OF 83.94 FEET TO A POINT FOR CORNER;

SOUTH 45 DEGREES 46 MINUTES 39 SECONDS EAST, A DISTANCE OF 70.50 FEET TO A POINT FOR CORNER;

SOUTH 65 DEGREES 20 MINUTES 11 SECONDS EAST, A DISTANCE OF 154.89 FEET TO A POINT FOR CORNER;

SOUTH 57 DEGREES 43 MINUTES 24 SECONDS EAST, A DISTANCE OF 104.47 FEET TO A POINT FOR CORNER;

SOUTH 08 DEGREES 58 MINUTES 00 SECONDS EAST, A DISTANCE OF 103.87 FEET TO A POINT FOR CORNER;

SOUTH 30 DEGREES 16 MINUTES 36 SECONDS WEST, A DISTANCE OF 92.56 FEET TO A POINT FOR CORNER;

SOUTH 48 DEGREES 18 MINUTES 00 SECONDS WEST, A DISTANCE OF 95.11 FEET TO A POINT FOR CORNER;

SOUTH 64 DEGREES 48 MINUTES 37 SECONDS WEST, A DISTANCE OF 115.06 FEET TO A POINT FOR CORNER;

SOUTH 63 DEGREES 46 MINUTES 10 SECONDS WEST, A DISTANCE OF 108.90 FEET TO A POINT FOR CORNER;

SOUTH 74 DEGREES 52 MINUTES 48 SECONDS WEST, A DISTANCE OF 108.83 FEET TO A POINT FOR CORNER;

SOUTH 80 DEGREES 20 MINUTES 18 SECONDS WEST, A DISTANCE OF 130.42 FEET TO A POINT FOR CORNER;

SOUTH 77 DEGREES 33 MINUTES 24 SECONDS WEST, A DISTANCE OF 159.57 FEET TO A POINT FOR CORNER;

SOUTH 49 DEGREES 37 MINUTES 34 SECONDS WEST, A DISTANCE OF 79.64 FEET TO A POINT FOR CORNER;

SOUTH 30 DEGREES 51 MINUTES 57 SECONDS WEST, A DISTANCE OF 127.68 FEET TO A POINT FOR CORNER;

SOUTH 08 DEGREES 15 MINUTES 52 SECONDS EAST, A DISTANCE OF 88.75 FEET TO A POINT FOR CORNER;

SOUTH 20 DEGREES 25 MINUTES 34 SECONDS EAST, A DISTANCE OF 191.80 FEET TO A POINT FOR CORNER;

SOUTH 08 DEGREES 27 MINUTES 55 SECONDS EAST, A DISTANCE OF 92.30 FEET TO A POINT FOR CORNER;

SOUTH 39 DEGREES 42 MINUTES 15 SECONDS WEST, A DISTANCE OF 84.38 FEET TO A POINT FOR CORNER;

SOUTH 80 DEGREES 08 MINUTES 27 SECONDS WEST, A DISTANCE OF 92.47 FEET TO A POINT FOR CORNER;

NORTH 75 DEGREES 29 MINUTES 03 SECONDS WEST, A DISTANCE OF 181.83 FEET TO A POINT FOR CORNER;

NORTH 78 DEGREES 44 MINUTES 38 SECONDS WEST, A DISTANCE OF 106.12 FEET TO A POINT FOR CORNER;

SOUTH 69 DEGREES 37 MINUTES 05 SECONDS WEST, A DISTANCE OF 80.67 FEET TO A POINT FOR CORNER;

SOUTH 20 DEGREES 46 MINUTES 24 SECONDS WEST, A DISTANCE OF 87.62 FEET TO A POINT FOR CORNER;

SOUTH 14 DEGREES 45 MINUTES 22 SECONDS EAST, PASSING AT A DISTANCE OF 71.19 FEET THE SOUTHEAST CORNER OF SAID 106.762 ACRE TRACT, SAME BEING A NORTHEAST CORNER OF AFORESAID 1113.084 ACRE TRACT, CONTINUING WITH THE CENTERLINE OF SAID EAST FORK OF THE TRINITY RIVER AND THE EAST PROPERTY LINE OF SAID 1113.084 ACRE TRACT, IN ALL A TOTAL DISTANCE OF 120.37 FEET TO A POINT FOR CORNER;

THENCE, CONTINUING WITH THE CENTERLINE OF SAID EAST FORK OF THE TRINITY RIVER AND ALONG THE EAST PROPERTY LINE OF SAID 1113.084 ACRE TRACT, THE FOLLOWING COURSES AND DISTANCES:

SOUTH 34 DEGREES 39 MINUTES 08 SECONDS EAST, A DISTANCE OF 74.62 FEET TO A POINT FOR CORNER;

SOUTH 84 DEGREES 34 MINUTES 58 SECONDS EAST, A DISTANCE OF 126.28 FEET TO A POINT FOR CORNER;

SOUTH 65 DEGREES 27 MINUTES 27 SECONDS EAST, A DISTANCE OF 133.32 FEET TO A POINT FOR CORNER;

NORTH 71 DEGREES 35 MINUTES 21 SECONDS EAST, A DISTANCE OF 110.32 FEET TO A POINT FOR CORNER;

SOUTH 75 DEGREES 11 MINUTES 25 SECONDS EAST, A DISTANCE OF 99.44 FEET TO A POINT FOR CORNER;

SOUTH 16 DEGREES 58 MINUTES 48 SECONDS EAST, A DISTANCE OF 54.42 FEET TO A POINT FOR CORNER;

SOUTH 06 DEGREES 07 MINUTES 16 SECONDS WEST, A DISTANCE OF 82.33 FEET TO A POINT FOR CORNER;

SOUTH 34 DEGREES 19 MINUTES 44 SECONDS WEST, A DISTANCE OF 114.95 FEET TO A POINT FOR CORNER;

SOUTH 85 DEGREES 30 MINUTES 45 SECONDS WEST, A DISTANCE OF 291.84 FEET TO A POINT FOR CORNER;

SOUTH 08 DEGREES 46 MINUTES 06 SECONDS WEST, A DISTANCE OF 95.18 FEET TO A POINT FOR CORNER;

SOUTH 37 DEGREES 06 MINUTES 09 SECONDS EAST, A DISTANCE OF 121.86 FEET TO A POINT FOR CORNER;

SOUTH 38 DEGREES 12 MINUTES 58 SECONDS EAST, A DISTANCE OF 130.83 FEET TO A POINT FOR CORNER;

THENCE, OVER AND ACROSS SAID 1113.084 ACRE TRACT, THE FOLLOWING COURSES AND DISTANCES:

SOUTH 87 DEGREES 05 MINUTES 41 SECONDS WEST, A DISTANCE OF 1162.77 FEET TO A POINT FOR CORNER AND THE BEGINNING OF A TANGENT CURVE TO THE LEFT HAVING A CENTRAL ANGLE OF 39 DEGREES 50 MINUTES 38 SECONDS, A RADIUS OF 630.00 FEET, A LONG

CHORD THAT BEARS, SOUTH 67 DEGREES 10 MINUTES 22 SECONDS WEST, A DISTANCE OF 429.33 FEET;

ALONG SAID TANGENT CURVE TO THE LEFT, AN ARC DISTANCE OF 438.11 FEET TO A POINT FOR CORNER;

SOUTH 47 DEGREES 15 MINUTES 03 SECONDS WEST, A DISTANCE OF 379.74 FEET TO A POINT FOR CORNER AND THE BEGINNING OF A TANGENT CURVE TO THE RIGHT HAVING A CENTRAL ANGLE OF 41 DEGREES 03 MINUTES 11 SECONDS, A RADIUS OF 570.00 FEET, A LONG CHORD THAT BEARS, SOUTH 67 DEGREES 46 MINUTES 38 SECONDS WEST, A DISTANCE OF 399.73 FEET;

ALONG SAID TANGENT CURVE TO THE RIGHT, AN ARC DISTANCE OF 408.41 FEET TO A POINT FOR CORNER;

SOUTH 88 DEGREES 18 MINUTES 14 SECONDS WEST, A DISTANCE OF 536.71 FEET TO A POINT FOR CORNER AND THE BEGINNING OF A NON-TANGENT CURVE TO THE LEFT HAVING A CENTRAL ANGLE OF 202 DEGREES 43 MINUTES 24 SECONDS, A RADIUS OF 430.00 FEET, A LONG CHORD THAT BEARS, SOUTH 72 DEGREES 56 MINUTES 30 SECONDS WEST, A DISTANCE OF 843.15 FEET;

ALONG SAID NON-TANGENT CURVE TO THE LEFT, AN ARC DISTANCE OF 1521.42 FEET TO A POINT FOR CORNER;

SOUTH 57 DEGREES 34 MINUTES 46 SECONDS WEST, A DISTANCE OF 177.27 FEET TO A POINT FOR CORNER AND THE BEGINNING OF A TANGENT CURVE TO THE RIGHT HAVING A CENTRAL ANGLE OF 17 DEGREES 46 MINUTES 00 SECONDS, A RADIUS OF 570.00 FEET, A LONG CHORD THAT BEARS, SOUTH 66 DEGREES 27 MINUTES 46 SECONDS WEST, A DISTANCE OF 176.04 FEET;

ALONG SAID TANGENT CURVE TO THE RIGHT, AN ARC LENGTH OF 176.75 FEET TO A POINT FOR CORNER;

SOUTH 75 DEGREES 20 MINUTES 45 SECONDS WEST, A DISTANCE OF 877.21 FEET TO A POINT FOR CORNER IN THE WEST LINE OF SAID 1113.084 ACRE TRACT, SAME BEING THE APPROXIMATE CENTERLINE OF COLLIN COUNTY ROAD NO. 281 (A VARIABLE WIDTH RIGHT-OF-WAY);

THENCE, NORTH 00 DEGREES 31 MINUTES 40 SECONDS EAST, ALONG THE WEST LINE OF SAID 1113.084 ACRE TRACT AND THE APPROXIMATE CENTERLINE OF SAID COLLIN COUNTY ROAD NO. 281, A DISTANCE OF 1574.34 FEET TO A 1/2 INCH IRON ROD FOUND FOR AN INSIDE ELL CORNER OF SAID 1113.084 ACRE TRACT AND THE NORTHEAST CORNER OF A CALLED 3.000 ACRE TRACT OF LAND CONVEYED TO TERRY L. HERTWICK AND ROSE ETTA JONES BY DEED RECORDED IN COUNTY CLERK'S FILE NO. 2002-0001673, LAND RECORDS, COLLIN COUNTY, TEXAS;

THENCE, NORTH 00 DEGREES 04 MINUTES 47 SECONDS EAST, OVER AND ACROSS SAID 1113.084 ACRE TRACT, CONTINUING ALONG THE APPROXIMATE CENTERLINE OF SAID COLLIN COUNTY ROAD NO. 281, A DISTANCE OF 2505.18 FEET TO A POINT FOR AN INSIDE ELL CORNER OF SAID 1113.084 ACRE TRACT;

THENCE, SOUTH 89 DEGREES 21 MINUTES 54 SECONDS EAST, ALONG THE NORTH LINE OF SAID 1113.084 ACRE TRACT, PASSING AT A DISTANCE OF 40.00 FEET A 5/8 INCH IRON ROD WITH YELLOW PLASTIC CAP STAMPED "CARTER BURGESS" SET FOR WITNESS, CONTINUING A TOTAL DISTANCE OF 1290.73 FEET TO A 5/8 INCH IRON ROD FOUND FOR THE A NORTHEAST CORNER OF SAID 1113.084 ACRE TRACT AND BEING ON THE WEST LINE OF SAID 118.259 ACRE TRACT;

THENCE, NORTH 00 DEGREES 11 MINUTES 31 SECONDS WEST, ALONG THE WEST LINE OF SAID 118.259 ACRE TRACT, A DISTANCE OF 15.14 FEET TO A 1/2 INCH IRON ROD FOUND FOR A NORTHWEST CORNER OF SAID 118.259 ACRE TRACT AND THE SOUTHWEST CORNER OF A CALLED 1.071 ACRE TRACT OF LAND DESCRIBED IN A DEED TO ANITA L. GRAY AND HUSBAND, JIMMY L. GRAY AS RECORDED IN COLLIN COUNTY CLERK'S FILE NO. 94-0054427 OF THE LAND RECORDS OF COLLIN COUNTY, TEXAS;

THENCE SOUTH 89 DEGREES 10 MINUTES 20 SECONDS EAST, ALONG THE SOUTH LINE OF AFORESAID 1.071 ACRE TRACT, A DISTANCE OF 182.65 FEET TO A 5/8 INCH IRON ROD WITH A YELLOW PLASTIC CAP STAMPED "CARTER BURGESS" SET FOR THE SOUTHEAST CORNER OF SAID 1.071 ACRE TRACT;

THENCE NORTH 00 DEGREES 11 MINUTES 36 SECONDS WEST, ALONG THE EAST LINE OF AFORESAID 1.071 ACRE TRACT, A DISTANCE OF 254.52 FEET TO A POINT FOR CORNER, FROM WHICH A 5/8 INCH IRON ROD FOUND BEARS NORTH 00 DEGREES 11 MINUTES 36 SECONDS WEST, A DISTANCE OF 0.64 FEET, SAID POINT BEING IN THE SOUTH LINE OF A CALLED 10.000 ACRE TRACT OF LAND DESCRIBED IN A DEED TO CABE W. CHADICK AS RECORDED IN COLLIN COUNTY CLERK'S FILE NO. 2000-0095879 OF THE LAND RECORDS OF COLLIN COUNTY, TEXAS;

THENCE, SOUTH 89 DEGREES 20 MINUTES 27 SECONDS EAST, ALONG THE NORTH LINE OF SAID 118.259 ACRE TRACT, THE SOUTH LINE OF SAID 10.000 ACRE TRACT, THE SOUTH LINE OF AFORESAID 39.06 ACRE TRACT, A DISTANCE OF 1856.29 FEET TO A 3/8 INCH IRON ROD FOUND FOR THE SOUTHEAST CORNER OF SAID THOMAS M. FRIS TRACT;

THENCE, NORTH 00 DEGREES 05 MINUTES 19 SECONDS EAST, ALONG THE WEST LINE OF SAID 106.762 ACRE TRACT AND THE EAST LINE OF SAID THOMAS M. FRIS TRACT, A DISTANCE OF 794.23 FEET TO THE **POINT OF BEGINNING**, AND CONTAINING 423.553 ACRES OF LAND, MORE OR LESS.

(2) MUD 2/TRACT B - 407.211 acres

BEING A 407.211 ACRE TRACT OF LAND SITUATED IN THE JOHN LARIMON SURVEY, ABSTRACT NO. 530, AND THE THOMAS BRUCE SURVEY, ABSTRACT NO. 103, COLLIN COUNTY, TEXAS, AND BEING PART OF A 158.524 ACRE TRACT OF LAND CONVEYED TO MA-BBO FIVE, L.P. BY DEED RECORDED IN COUNTY CLERK'S FILE NO. 20060718001344740, OFFICIAL PUBLIC RECORDS, COLLIN COUNTY, TEXAS AND BEING PART OF A 1113.084 ACRE TRACT OF LAND CONVEYED TO MA BB OWEN, L.P. BY DEED RECORDED IN COUNTY CLERK'S FILE NO. 20060616000829800, OFFICIAL PUBLIC RECORDS, COLLIN COUNTY, TEXAS. SAID 407.211 ACRE TRACT, WITH BEARING BASIS BEING GRID NORTH, TEXAS STATE PLANE COORDINATES, NORTH CENTRAL ZONE, NAD83 (CORS), DETERMINED BY GPS OBSERVATIONS ON JULIAN DAY 320, 2005, CALCULATED FROM DENTON CORS ARP (PID-DF8986), ARLINGTON RRP2 CORS ARP (PID-DF 5387) AND COLLIN CORS ARP (PID-8982), BEING MORE PARTICULARLY DESCRIBED BY METES AND BOUNDS AS FOLLOWS:

BEGINNING AT A POINT AT A NORTHWEST CORNER OF AFORESAID 1113.084 ACRE TRACT AND BEING THE SOUTHWEST CORNER OF A CALLED 0.998 ACRE TRACT OF LAND CONVEYED TO CHAMBERVILLE CEMETERY ASSOCIATION BY DEED RECORDED IN VOLUME 2034, PAGE 573, DEED RECORDS, COLLIN COUNTY, TEXAS AND BEING IN COLLIN COUNTY ROAD NO. 206 (A VARIABLE WIDTH PRESCRIPTIVE RIGHT-OF-WAY);

THENCE NORTH 89 DEGREES 45 MINUTES 16 SECONDS EAST, ALONG THE SOUTH LINE OF AFORESAID 0.998 ACRE TRACT, PASSING AT A DISTANCE OF 9.74 FEET A 5/8 INCH IRON ROD FOUND FOR WITNESS, CONTINUING A TOTAL DISTANCE OF 188.45 FEET TO A 5/8 INCH IRON ROD WITH A YELLOW PLASTIC CAP STAMPED "CARTER BURGESS" SET FOR AN INSIDE ELL CORNER OF AFORESAID 1113.084 ACRE TRACT AND BEING THE SOUTHEAST CORNER OF SAID 0.998 ACRE TRACT;

THENCE NORTH 00 DEGREES 55 MINUTES 15 SECONDS WEST, ALONG THE EAST LINE OF AFORESAID 0.998 ACRE TRACT PASSING AT A DISTANCE OF 177.66 FEET A 1/2 INCH IRON ROD FOUND FOR WITNESS, CONTINUING A TOTAL DISTANCE OF 206.50 FEET TO A POINT FOR A NORTHEAST CORNER OF SAID 0.998 ACRE TRACT AND BEING A NORTHWEST CORNER OF AFORESAID 1113.084 ACRE TRACT AND BEING IN THE APPROXIMATE CENTERLINE OF COLLIN COUNTY ROAD NO. 281 (A VARIABLE WIDTH PRESCRIPTIVE RIGHT-OF-WAY);

THENCE ALONG THE NORTH LINE OF AFORESAID 1113.084 ACRE TRACT AND THE APPROXIMATE CENTERLINE OF AFORESAID COLLIN COUNTY ROAD NO. 281 THE FOLLOWING COURSES AND DISTANCES:

SOUTH 88 DEGREES 11 MINUTES 52 SECONDS EAST, A DISTANCE OF 172.87 FEET TO A 5/8 INCH IRON ROD WITH YELLOW PLASTIC CAP STAMPED "CARTER BURGESS" SET FOR CORNER;

SOUTH 84 DEGREES 50 MINUTES 48 SECONDS EAST, A DISTANCE OF 300.57 FEET TO A 5/8 INCH IRON ROD WITH YELLOW PLASTIC CAP STAMPED "CARTER BURGESS" SET FOR CORNER;

SOUTH 88 DEGREES 57 MINUTES 46 SECONDS EAST, A DISTANCE OF 689.46 FEET TO A 5/8 INCH IRON ROD WITH YELLOW PLASTIC CAP STAMPED "CARTER BURGESS" SET FOR CORNER;

NORTH 89 DEGREES 51 MINUTES 11 SECONDS EAST, A DISTANCE OF 691.44 FEET TO A 5/8 INCH IRON ROD WITH YELLOW PLASTIC CAP STAMPED "CARTER BURGESS" SET FOR CORNER;

SOUTH 84 DEGREES 42 MINUTES 34 SECONDS EAST, A DISTANCE OF 623.13 FEET TO A 3/4 INCH IRON ROD FOUND FOR THE MOST NORTHERN NORTHEAST CORNER OF AFORESAID 1113.084 ACRE TRACT AND BEING THE NORTHWEST CORNER OF A CALLED 7.04 ACRE TRACT OF LAND CONVEYED TO ROBERT W. GANTER AND ELIZABETH A. GANTER BY DEED RECORDED IN COUNTY CLERK'S NO. 97-0024749. LAND RECORDS, COLLIN COUNTY, TEXAS;

SOUTH 00 DEGREES 29 MINUTES 01 SECONDS WEST, ALONG AN EAST LINE OF AFORESAID 1113.084 ACRE TRACT AND THE COMMON WEST LINE OF AFORESAID 7.04 ACRE TRACT , A DISTANCE OF 411.24 FEET TO A 1/2 INCH IRON PIPE FOUND FOR THE SOUTHWEST CORNER OF SAID 7.04 ACRE TRACT;

SOUTH 89 DEGREES 02 MINUTES 06 SECONDS EAST, ALONG THE NORTH LINE OF SAID 1113.084 ACRE TRACT AND THE COMMON SOUTH LINE OF AFORESAID 7.04 ACRE TRACT, A DISTANCE OF 1471.42 FEET TO A 1/2 INCH IRON PIPE FOUND FOR CORNER AND BEING ON THE WEST LINE OF A CALLED 5.660 ACRE TRACT OF LAND CONVEYED TO DONALD DWAYNE TUCKER AND WIFE, JEAN TUCKER RECORDED IN VOLUME 931, PAGE 368, DEED RECORDS, COLLIN COUNTY, TEXAS AND BEING IN THE APPROXIMATE CENTERLINE OF AFORESAID COLLIN COUNTY ROAD NO. 281;

THENCE SOUTH 00 DEGREES 40 MINUTES 36 SECONDS WEST, ALONG AN EAST LINE OF SAID 1113.084 ACRE TRACT AND THE COMMON WEST LINES OF AFORESAID 5.660 TUCKER TRACT AND OF A CALLED 1.39 ACRE TRACT OF LAND CONVEYED TO CALVIN JARRETT AND KAREN JARRETT BY DEED RECORDED IN COUNTY CLERK'S FILE NO. 2005-0097078, LAND RECORDS, COLLIN COUNTY, TEXAS AND THE APPROXIMATE CENTERLINE OF AFORESAID COLLIN COUNTY ROAD NO. 281, A DISTANCE OF 537.51 FEET TO A POINT FOR THE CORNER;

THENCE, SOUTH 00 DEGREES 04 MINUTES 47 SECONDS WEST, OVER AND ACROSS SAID 1113.084 ACRE TRACT, A DISTANCE OF 2505.18 FEET TO A 1/2 INCH IRON ROD FOUND ON A SOUTH LINE OF SAID 1113.084 ACRE TRACT AND THE COMMON NORTHEAST CORNER OF A CALLED 3.000 ACRE TRACT OF LAND CONVEYED TO TERRY L. HARTWICK AND ROSE ETTA JONES BY DEED RECORDED IN COUNTY CLERK'S FILE NO. 2002-0001673, LAND RECORDS, COLLIN COUNTY, TEXAS;

THENCE, NORTH 89 DEGREES 54 MINUTES 23 SECONDS WEST, ALONG THE SOUTH LINE OF SAID 1113.084 ACRE TRACT, AND THE COMMON NORTH LINE OF SAID 3.000 ACRE TRACT, A DISTANCE OF 484.37 FEET TO A 5/8 INCH IRON ROD WITH YELLOW PLASTIC CAP STAMPED "CARTER BURGESS" SET FOR CORNER ON THE EAST LINE OF A 19.33 ACRE TRACT OF LAND CONVEYED TO TERRY L. HARTWICK AND ROSE ETTA JONES BY DEED RECORDED IN COUNTY CLERK'S FILE NO. 94-0065235, LAND RECORDS, COLLIN COUNTY, TEXAS;

THENCE, NORTH 00 DEGREES 14 MINUTES 32 SECONDS WEST, A DISTANCE OF 154.99 FEET TO A 5/8 INCH IRON ROD FOUND FOR THE NORTHEAST CORNER OF SAID 19.33 ACRE TRACT;

THENCE, NORTH 89 DEGREES 39 MINUTES 30 SECONDS WEST, ALONG THE SOUTH LINE OF SAID 1113.084 ACRE TRACT AND THE COMMON NORTH LINE OF SAID 19.33 ACRE TRACT, A DISTANCE OF 988.76 FEET TO A 5/8 INCH IRON ROD WITH YELLOW PLASTIC CAP STAMPED "CARTER BURGESS" SET FOR CORNER ON THE EAST LINE OF SAID 158.524 ACRE TRACT;

THENCE, SOUTH 00 DEGREES 26 MINUTES 33 SECONDS EAST, ALONG THE EAST LINE OF SAID 158.524 ACRE TRACT AND THE COMMON WEST LINES OF SAID 19.33 ACRE TRACT AND A CALLED 11.06 ACRE TRACT OF LAND CONVEYED TO HUGH P. McADAMS BY DEED RECORDED IN COUNTY CLERK'S

FILE NO. 92-0003436, LAND RECORDS, COLLIN COUNTY, TEXAS, A DISTANCE OF 1763.02 FEET TO A POINT FOR THE SOUTHEAST CORNER OF SAID 158.524 ACRE TRACT AND BEING THE SOUTHWEST CORNER OF SAID 11.06 ACRE TRACT AND BEING IN THE APPROXIMATE CENTERLINE OF COLLIN COUNTY ROAD NO. 206 (A VARIABLE WIDTH PRESCRIPTIVE RIGHT-OF-WAY) AND BEING ON THE NORTH LINE OF A CALLED 72 ACRE TRACT OF LAND CONVEYED TO J.L. MELL, BEVERLY ANN ALLEN & NANCY JO. LAWRENCE BY DEED RECORDED IN COUNTY CLERKS' FILE NO. 2000-0101341, LAND RECORDS, COLLIN COUNTY, TEXAS;

THENCE NORTH 89 DEGREES 36 MINUTES 20 SECONDS WEST, ALONG THE SOUTH LINE OF AFORESAID 158.524 ACRE TRACT AND THE COMMON NORTH LINE OF AFORESAID 72 ACRE TRACT AND ALONG THE APPROXIMATE CENTERLINE OF AFORESAID COLLIN COUNTY ROAD NO. 206 A DISTANCE OF 576.42 FEET TO A POINT FOR AN ELL CORNER OF SAID 158.524 ACRE TRACT AND BEING THE SOUTHEAST CORNER OF THE REMAINDER OF A TRACT OF LAND CONVEYED TO DONALD M. MOTSENBACKER AND WIFE, NORMA FAYE MOTSENBACKER BY DEED RECORDED IN VOLUME 2678, PAGE 833, DEED RECORDS, COLLIN COUNTY, TEXAS;

THENCE ALONG THE COMMON LINES BETWEEN AFORESAID 158.524 ACRE TRACT AND AFORESAID REMAINDER MOTSENBACKER TRACT THE FOLLOWING COURSES AND DISTANCES:

NORTH 01 DEGREES 01 MINUTES 34 SECONDS EAST, PASSING AT A DISTANCE OF 28.19 FEET A 1/2 INCH IRON ROD FOUND FOR WITNESS, CONTINUING A TOTAL DISTANCE OF 95.45 FEET TO A 1/2 INCH IRON ROD FOUND FOR CORNER;

NORTH 46 DEGREES 22 MINUTES 09 SECONDS WEST, A DISTANCE OF 30.04 FEET TO A 1/2 INCH IRON ROD FOUND FOR CORNER;

NORTH 01 DEGREES 02 MINUTES 48 SECONDS EAST, A DISTANCE OF 66.35 FEET TO A 1/2 INCH IRON ROD FOUND FOR CORNER;

NORTH 48 DEGREES 15 MINUTES 02 SECONDS WEST, A DISTANCE OF 30.38 FEET TO A 1/2 INCH IRON ROD FOUND FOR CORNER;

NORTH 01 DEGREES 27 MINUTES 43 SECONDS EAST, A DISTANCE OF 66.57 FEET TO A 1/2 INCH IRON ROD FOUND FOR CORNER;

NORTH 46 DEGREES 58 MINUTES 13 SECONDS WEST, A DISTANCE OF 23.59 FEET TO A 1/2 INCH IRON ROD FOUND FOR CORNER;

NORTH 00 DEGREES 24 MINUTES 20 SECONDS EAST, A DISTANCE OF 25.48 FEET TO A 1/2 INCH IRON ROD FOUND FOR CORNER;

NORTH 71 DEGREES 03 MINUTES 06 SECONDS EAST, A DISTANCE OF 10.41 FEET TO A 1/2 INCH IRON ROD FOUND FOR CORNER;

NORTH 39 DEGREES 44 MINUTES 59 SECONDS EAST, A DISTANCE OF 10.78 FEET TO A 1/2 INCH IRON ROD FOUND FOR CORNER;

NORTH 00 DEGREES 21 MINUTES 32 SECONDS WEST, A DISTANCE OF 98.69 FEET TO A 1/2 INCH IRON ROD FOUND FOR CORNER;

NORTH 43 DEGREES 09 MINUTES 55 SECONDS WEST, A DISTANCE OF 11.67 FEET TO A 1/2 INCH IRON ROD FOUND FOR CORNER;

NORTH 88 DEGREES 23 MINUTES 42 SECONDS WEST, A DISTANCE OF 201.10 FEET TO A 1/2 INCH IRON ROD FOUND FOR CORNER;

SOUTH 46 DEGREES 23 MINUTES 42 SECONDS WEST, A DISTANCE OF 10.70 FEET TO A 1/2 INCH IRON ROD FOUND FOR CORNER;

SOUTH 14 DEGREES 06 MINUTES 56 SECONDS WEST, A DISTANCE OF 10.35 FEET TO A 1/2 INCH IRON ROD FOUND FOR CORNER;

SOUTH 01 DEGREES 47 MINUTES 24 SECONDS WEST, A DISTANCE OF 81.41 FEET TO A 1/2 INCH IRON ROD FOUND FOR CORNER;

SOUTH 19 DEGREES 38 MINUTES 16 SECONDS EAST, A DISTANCE OF 10.39 FEET TO A 1/2 INCH IRON ROD FOUND FOR CORNER;

SOUTH 52 DEGREES 48 MINUTES 19 SECONDS EAST, A DISTANCE OF 10.82 FEET TO A 1/2 INCH IRON ROD FOUND FOR CORNER;

SOUTH 76 DEGREES 36 MINUTES 21 SECONDS EAST, A DISTANCE OF 10.30 FEET TO A 1/2 INCH IRON ROD FOUND FOR CORNER;

SOUTH 02 DEGREES 21 MINUTES 20 SECONDS WEST, A DISTANCE OF 25.12 FEET TO A 1/2 INCH IRON ROD FOUND FOR CORNER;

SOUTH 47 DEGREES 10 MINUTES 36 SECONDS WEST, A DISTANCE OF 33.81 FEET TO A 1/2 INCH IRON ROD FOUND FOR CORNER;

SOUTH 00 DEGREES 47 MINUTES 06 SECONDS EAST, A DISTANCE OF 63.78 FEET TO A 1/2 INCH IRON ROD FOUND FOR CORNER;

SOUTH 44 DEGREES 58 MINUTES 54 SECONDS WEST, A DISTANCE OF 31.86 FEET TO A 1/2 INCH IRON ROD FOUND FOR CORNER;

SOUTH 00 DEGREES 34 MINUTES 55 SECONDS EAST, A DISTANCE OF 65.94 FEET TO A 1/2 INCH IRON ROD FOUND FOR CORNER;

SOUTH 48 DEGREES 15 MINUTES 30 SECONDS WEST, A DISTANCE OF 30.58 FEET TO A 1/2 INCH IRON ROD FOUND FOR CORNER;

SOUTH 00 DEGREES 40 MINUTES 17 SECONDS EAST, PASSING AT A DISTANCE OF 66.78 FEET A 1/2 INCH IRON ROD FOUND FOR WITNESS, CONTINUING A TOTAL DISTANCE OF 95.05 FEET TO A POINT FOR AN ELL CORNER OF AFORESAID 158.524 ACRE TRACT AND THE SOUTHWEST CORNER OF AFORESAID REMAINDER MOTSENBACKER TRACT AND BEING ON THE NORTH LINE OF A CALLED 36.145 ACRE TRACT OF LAND CONVEYED TO CAROLYN PUTNEY BY DEED RECORDED IN COUNTY CLERK'S FILE NO. 2003-0016137, LAND RECORDS, COLLIN COUNTY, TEXAS AND BEING IN THE APPROXIMATE CENTERLINE OF AFORESAID COLLIN COUNTY ROAD NO.206;

THENCE NORTH 89 DEGREES 36 MINUTES 20 SECONDS WEST, ALONG THE SOUTH LINE OF AFORESAID 158.524 ACRE TRACT AND THE COMMON NORTH LINE OF AFORESAID 36.145 ACRE TRACT AND THE APPROXIMATE CENTERLINE OF AFORESAID COLLIN COUNTY ROAD NO. 206, A DISTANCE OF 1762.31 FEET TO A POINT FOR CORNER;

THENCE NORTH 00 DEGREES 08 MINUTES 15 SECONDS WEST, PASSING AT A DISTANCE OF 26.32 FEET A 1/2 INCH IRON ROD FOUND FOR WITNESS, CONTINUING ALONG THE WEST LINE OF AFORESAID 158.524 ACRE TRACT AND THE COMMON EAST LINE OF THE FOLLOWING TRACTS, A CALLED 22.030 ACRE TRACT OF LAND CONVEYED TO BILLY J. DRURY, ET AL BY DEED RECORDED IN VOLUME 1043, PAGE 346, DEED RECORDS, COLLIN COUNTY, TEXAS AND A CALLED 22.030 ACRE TRACT OF LAND CONVEYED TO JIMMIE L. DRURY BY DEED RECORDED IN COUNTY CLERK'S FILE NO. 2003-0060252, LAND RECORDS, COLLIN COUNTY, TEXAS AND A CALLED 3.67 ACRE TRACT OF LAND CONVEYED TO RODNEY C. NIXON BY DEED RECORDED IN COUNTY CLERK'S

FILE NO. 93-0108403, LAND RECORDS, COLLIN COUNTY, TEXAS AND A CALLED 3.67 ACRE TRACT OF LAND CONVEYED TO RODNEY C. NIXON BY DEED RECORDED IN COUNTY CLERK'S FILE NO. 93-0108402, LAND RECORDS, COLLIN COUNTY, TEXAS AND A CALLED 11.015 ACRE TRACT OF LAND CONVEYED TO QUIDA NIXON BY DEED RECORDED IN VOLUME 1043, PAGE 338, DEED RECORDS, COLLIN COUNTY, TEXAS AND A CALLED 11.015 ACRE TRACT OF LAND CONVEYED TO DEAN ANDERSON BY DEED RECORDED IN VOLUME 1043, PAGE 333, DEED RECORDS, COLLIN COUNTY, TEXAS AND ALONG THE APPROXIMATE CENTERLINE OF AFORESAID COLLIN COUNTY ROAD NO. 206, A DISTANCE OF 2672.26 FEET TO A POINT FOR CORNER;

THENCE, SOUTH 88 DEGREES 53 MINUTES 46 SECONDS EAST, A DISTANCE OF 19.61 FEET TO A 5/8 INCH IRON ROD WITH A YELLOW PLASTIC CAP STAMPED "CARTER BURGESS" SET FOR THE SOUTHWEST CORNER OF SAID 1113.084 ACRE TRACT;

THENCE ALONG THE WEST LINE OF AFORESAID 1113.084 ACRE TRACT THE FOLLOWING COURSES AND DISTANCES:

NORTH 00 DEGREES 12 MINUTES 11 SECONDS WEST, A DISTANCE OF 1035.01 FEET TO A POINT FOR CORNER;

NORTH 00 DEGREES 50 MINUTES 11 SECONDS WEST, A DISTANCE OF 1248.29 FEET TO THE **POINT OF BEGINNING**, AND CONTAINING 407.211 ACRES OF LAND, MORE OR LESS.

EXHIBIT B

RECEIVED

DEC 05 2006

PETITION REQUESTING CONSENT FOR THE CREATION OF A MUNICIPAL UTILITY DISTRICT CITY SECRETARY *SA*

TO THE HONORABLE MAYOR AND CITY COUNCIL OF THE CITY OF MCKINNEY, TEXAS:

The undersigned owner (collectively, the "Owner"), acting pursuant to subsections 42.042(a) and (b), Texas Local Government Code, as amended, and Section 54.016 of the Texas Water Code, as amended, respectfully submits this petition requesting this Honorable City Council to consent to the creation of a municipal utility district (the "District"), and for cause Owner would respectfully show the following:

I.

The District shall be organized under the provisions of Article XVI, Section 59 and Article III, Section 52 of the Constitution of Texas and the applicable provisions of Chapters 49 and 54, Texas Water Code, as amended.

II.

The proposed name of the District is "McKinney Municipal Utility District No. 2." The District shall contain an area of approximately 830.764 acres of land, more or less, lying wholly within Collin County, Texas, and wholly within the extraterritorial jurisdiction ("ETJ") of the City of McKinney, Texas, and not within the corporate limits or ETJ of any other city, town, or village. The boundaries of the proposed District are described by metes and bounds on **Exhibit A** (the "Property").

III.

The undersigned Owner holds title to land within the proposed District and is the owner of a majority in value of the lands therein as shown on the tax rolls of Collin County, Texas. No person holds a lien on any land within the proposed District.

IV.

The general nature of the work to be done by and within the District at the present time (the "Project") is the: (i) construction, maintenance, and operation of a waterworks system for residential and commercial purposes; (ii) the construction, maintenance, and operation of a sanitary sewer collection system and sewage disposal plant; (iii) the control, abatement, and amendment of the harmful excess of waters and the reclamation and drainage of overflowed lands within the District; (iv) the provision of roads and improvements as permitted for road districts under Chapter 441, Texas Transportation Code and Section 54.234 of the Texas Water Code; and (v) such other construction, installation, maintenance, purchase, and operation of such

additional facilities, systems, plants and enterprises as shall be consonant with the purposes for which the District is organized. The District may also finance one or more facilities designed or utilized to perform fire-fighting services and may purchase interests in land and purchase, construct, acquire, improve, extend, maintain, and operate improvements, facilities, and equipment for the purpose of providing parks and recreational facilities to the extent authorized and permitted under state law.

V.

There is a necessity for the Project because the District is located within an area which will experience a substantial and sustained residential and commercial growth within the immediate future, is urban in nature and is not supplied with adequate water, sanitary sewer, drainage facilities, and services. The health and welfare of the future inhabitants of the District require the acquisition and installation of an adequate waterworks system, storm and sanitary sewer collection and disposal systems.

The purchase, construction, extension, improvement, maintenance and operation of such waterworks system and storm and sanitary sewer collection and disposal system will conserve and preserve the natural resources of this State by promoting and protecting the purity and sanitary condition of the State's waters and will promote and protect the public health and welfare of the community; therefore, a public necessity exists for the organization of the District.

The Property cannot be developed without the creation of the District to provide and finance the before mentioned water, wastewater, road, and drainage facilities, therefore a public necessity exists.

VI.

The Project is feasible and practicable. There is an ample supply of water available, and the terrain of the area to be included in the proposed District is such that a waterworks system, a sanitary sewer system, a road system, and a drainage and storm sewer system can be constructed at a reasonable cost.

VII.

The estimated cost of the Project is \$94,000,000.00.

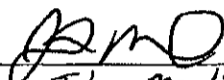
VIII.

WHEREFORE, the undersigned Owner respectfully prays that this petition requesting consent for the creation of the District be granted in all respects and that the City Council of the City of McKinney, Texas, adopt an ordinance giving its written consent to the creation of the District.

RESPECTFULLY SUBMITTED this 5th day of December, 2006.

MA-BBO FIVE, LP,
a Texas limited partnership,

By: MA-BBO Five Holdings, LLC,
a Texas limited liability company,
its general partner

By: 
Name: John Marlin
Title: manager

MA BB OWEN, LP,
a Texas limited partnership,

By: MA BB Owen Holdings, LLC,
a Texas limited liability company,
its general partner

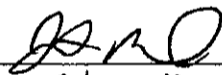
By: 
Name: John Marlin
Title: manager

Exhibit A

(1) MUD 2/TRACT A - 423.553 acres

BEING A 423.553 ACRE TRACT OF LAND SITUATED IN THE THOMAS BRUCE SURVEY, ABSTRACT NO. 103, THE THOMAS LINDSAY SURVEY, ABSTRACT NO. 521, COLLIN COUNTY, TEXAS, AND BEING ALL OF A CALLED 106.762 ACRE TRACT OF LAND CONVEYED TO MA-BBO FIVE, LP, BY DEED RECORDED IN COUNTY CLERK'S FILE NO. 20060918001344750, OFFICIAL PUBLIC RECORDS, COLLIN COUNTY, TEXAS, AND BEING ALL OF A CALLED 118.259 ACRE TRACT OF LAND CONVEYED TO MA-BBO FIVE, LP, BY DEED RECORDED IN COUNTY CLERK'S FILE NO. 20060918001344760, OFFICIAL PUBLIC RECORDS, COLLIN COUNTY, TEXAS, AND BEING PART OF A CALLED 1113.084 ACRE TRACT OF LAND CONVEYED TO MA BB OWEN, LP, BY DEED RECORDED IN COUNTY CLERK'S FILE NO. 20060616000829800, OFFICIAL PUBLIC RECORDS, COLLIN COUNTY, TEXAS, SAID 423.553 ACRE TRACT, WITH BEARING BASIS BEING GRID NORTH, TEXAS STATE PLANE COORDINATES, NORTH CENTRAL ZONE, NAD83 (CORS), DETERMINED BY GPS OBSERVATIONS ON JULIAN DAY 320, 2005, CALCULATED FROM DENTON CORS ARP (PID-DF8986), ARLINGTON RRP2 CORS ARP (PID-DF 5387) AND COLLIN CORS ARP (PID-8982), AND BEING MORE PARTICULARLY DESCRIBED BY METES AND BOUNDS AS FOLLOWS:

BEGINNING AT A 5/8 INCH IRON ROD FOUND FOR THE NORTHWEST CORNER OF SAID 106.762 ACRE TRACT AND THE NORTHEAST CORNER OF A 39.06 ACRE TRACT OF LAND DESCRIBED IN A DEED TO THOMAS M. FRIS AS RECORDED IN COLLIN COUNTY CLERK'S FILE NO. 96-0104896, LAND RECORDS, COLLIN COUNTY, TEXAS, SAID POINT ALSO BEING ON THE SOUTH LINE OF A TRACT OF LAND DESCRIBED IN A DEED TO JOHN P. WALDEN & WIFE JANE WALDEN AS RECORDED IN VOLUME 551, PAGE 366 OF THE DEED RECORDS OF COLLIN COUNTY, TEXAS;

THENCE, ALONG COMMON LINES OF SAID 106.762 ACRE TRACT AND SAID WALDEN TRACT, THE FOLLOWING COURSES AND DISTANCES:

SOUTH 89 DEGREES 11 MINUTES 59 SECONDS EAST, A DISTANCE OF 900.54 FEET TO A 5/8 INCH IRON ROD FOUND FOR CORNER;

SOUTH 89 DEGREES 27 MINUTES 53 SECONDS EAST, A DISTANCE OF 161.43 FEET TO A 5/8 INCH IRON ROD WITH YELLOW PLASTIC CAP STAMPED "CARTER BURGESS" SET FOR CORNER;

NORTH 83 DEGREES 20 MINUTES 49 SECONDS EAST, A DISTANCE OF 67.79 FEET TO THE NORTHEAST CORNER OF SAID 106.762 ACRE TRACT AND THE APPROXIMATE CENTERLINE OF EAST FORK OF THE TRINITY RIVER;

THENCE, ALONG THE EAST PROPERTY LINE OF SAID 106.762 ACRE TRACT, AND WITH THE CENTERLINE OF AFORESAID EAST FORK OF THE TRINITY RIVER, THE FOLLOWING COURSES AND DISTANCES:

SOUTH 20 DEGREES 21 MINUTES 50 SECONDS EAST, A DISTANCE OF 147.67 FEET TO A POINT FOR CORNER;

SOUTH 15 DEGREES 11 MINUTES 51 SECONDS EAST, A DISTANCE OF 121.20 FEET TO A POINT FOR CORNER;

SOUTH 53 DEGREES 55 MINUTES 47 SECONDS EAST, A DISTANCE OF 57.30 FEET TO A POINT FOR CORNER;

NORTH 81 DEGREES 40 MINUTES 31 SECONDS EAST, A DISTANCE OF 68.17 FEET TO A POINT FOR CORNER;

NORTH 55 DEGREES 58 MINUTES 51 SECONDS EAST, A DISTANCE OF 70.86 FEET TO A POINT FOR CORNER;

NORTH 50 DEGREES 52 MINUTES 37 SECONDS EAST, A DISTANCE OF 167.34 FEET TO A POINT FOR CORNER;

SOUTH 63 DEGREES 52 MINUTES 45 SECONDS EAST, A DISTANCE OF 76.94 FEET TO A POINT FOR CORNER;

SOUTH 24 DEGREES 20 MINUTES 33 SECONDS EAST, A DISTANCE OF 73.75 FEET TO A POINT FOR CORNER;

SOUTH 19 DEGREES 16 MINUTES 49 SECONDS WEST, A DISTANCE OF 61.92 FEET TO A POINT FOR CORNER;

SOUTH 29 DEGREES 28 MINUTES 37 SECONDS WEST, A DISTANCE OF 67.28 FEET TO A POINT FOR CORNER;

SOUTH 29 DEGREES 53 MINUTES 46 SECONDS WEST, A DISTANCE OF 70.84 FEET TO A POINT FOR CORNER;

SOUTH 04 DEGREES 46 MINUTES 27 SECONDS EAST, A DISTANCE OF 98.68 FEET TO A POINT FOR CORNER;

SOUTH 27 DEGREES 59 MINUTES 37 SECONDS EAST, A DISTANCE OF 72.48 FEET TO A POINT FOR CORNER;

SOUTH 38 DEGREES 58 MINUTES 18 SECONDS EAST, A DISTANCE OF 131.77 FEET TO A POINT FOR CORNER;

SOUTH 03 DEGREES 11 MINUTES 20 SECONDS EAST, A DISTANCE OF 91.41 FEET TO A POINT FOR CORNER;

SOUTH 06 DEGREES 35 MINUTES 41 SECONDS WEST, A DISTANCE OF 188.59 FEET TO A POINT FOR CORNER;

SOUTH 36 DEGREES 55 MINUTES 44 SECONDS EAST, A DISTANCE OF 101.19 FEET TO A POINT FOR CORNER;

SOUTH 77 DEGREES 27 MINUTES 27 SECONDS EAST, A DISTANCE OF 101.27 FEET TO A POINT FOR CORNER;

SOUTH 89 DEGREES 08 MINUTES 21 SECONDS EAST, A DISTANCE OF 137.11 FEET TO A POINT FOR CORNER;

SOUTH 56 DEGREES 41 MINUTES 24 SECONDS EAST, A DISTANCE OF 136.45 FEET TO A POINT FOR CORNER;

SOUTH 41 DEGREES 28 MINUTES 51 SECONDS EAST, A DISTANCE OF 84.90 FEET TO A POINT FOR CORNER;

SOUTH 16 DEGREES 13 MINUTES 08 SECONDS EAST, A DISTANCE OF 239.45 FEET TO A POINT FOR CORNER;

SOUTH 20 DEGREES 49 MINUTES 08 SECONDS WEST, A DISTANCE OF 84.82 FEET TO A POINT FOR CORNER;

SOUTH 38 DEGREES 02 MINUTES 36 SECONDS WEST, A DISTANCE OF 120.85 FEET TO A POINT FOR CORNER;

SOUTH 16 DEGREES 50 MINUTES 36 SECONDS WEST, A DISTANCE OF 106.92 FEET TO A POINT FOR CORNER;

SOUTH 04 DEGREES 08 MINUTES 50 SECONDS WEST, A DISTANCE OF 83.94 FEET TO A POINT FOR CORNER;

SOUTH 45 DEGREES 46 MINUTES 39 SECONDS EAST, A DISTANCE OF 70.50 FEET TO A POINT FOR CORNER;

SOUTH 65 DEGREES 20 MINUTES 11 SECONDS EAST, A DISTANCE OF 154.89 FEET TO A POINT FOR CORNER;

SOUTH 57 DEGREES 43 MINUTES 24 SECONDS EAST, A DISTANCE OF 104.47 FEET TO A POINT FOR CORNER;

SOUTH 08 DEGREES 58 MINUTES 00 SECONDS EAST, A DISTANCE OF 103.87 FEET TO A POINT FOR CORNER;

SOUTH 30 DEGREES 16 MINUTES 36 SECONDS WEST, A DISTANCE OF 92.56 FEET TO A POINT FOR CORNER;

SOUTH 48 DEGREES 18 MINUTES 00 SECONDS WEST, A DISTANCE OF 95.11 FEET TO A POINT FOR CORNER;

SOUTH 64 DEGREES 48 MINUTES 37 SECONDS WEST, A DISTANCE OF 115.06 FEET TO A POINT FOR CORNER;

SOUTH 63 DEGREES 46 MINUTES 10 SECONDS WEST, A DISTANCE OF 108.90 FEET TO A POINT FOR CORNER;

SOUTH 74 DEGREES 52 MINUTES 48 SECONDS WEST, A DISTANCE OF 108.83 FEET TO A POINT FOR CORNER;

SOUTH 80 DEGREES 20 MINUTES 18 SECONDS WEST, A DISTANCE OF 130.42 FEET TO A POINT FOR CORNER;

SOUTH 77 DEGREES 33 MINUTES 24 SECONDS WEST, A DISTANCE OF 159.57 FEET TO A POINT FOR CORNER;

SOUTH 49 DEGREES 37 MINUTES 34 SECONDS WEST, A DISTANCE OF 79.64 FEET TO A POINT FOR CORNER;

SOUTH 30 DEGREES 51 MINUTES 57 SECONDS WEST, A DISTANCE OF 127.68 FEET TO A POINT FOR CORNER;

SOUTH 08 DEGREES 15 MINUTES 52 SECONDS EAST, A DISTANCE OF 88.75 FEET TO A POINT FOR CORNER;

SOUTH 20 DEGREES 25 MINUTES 34 SECONDS EAST, A DISTANCE OF 191.80 FEET TO A POINT FOR CORNER;

SOUTH 08 DEGREES 27 MINUTES 55 SECONDS EAST, A DISTANCE OF 92.30 FEET TO A POINT FOR CORNER;

SOUTH 39 DEGREES 42 MINUTES 15 SECONDS WEST, A DISTANCE OF 84.38 FEET TO A POINT FOR CORNER;

SOUTH 80 DEGREES 08 MINUTES 27 SECONDS WEST, A DISTANCE OF 92.47 FEET TO A POINT FOR CORNER;

NORTH 75 DEGREES 29 MINUTES 03 SECONDS WEST, A DISTANCE OF 181.83 FEET TO A POINT FOR CORNER;

NORTH 78 DEGREES 44 MINUTES 38 SECONDS WEST, A DISTANCE OF 106.12 FEET TO A POINT FOR CORNER;

SOUTH 69 DEGREES 37 MINUTES 05 SECONDS WEST, A DISTANCE OF 80.67 FEET TO A POINT FOR CORNER;

SOUTH 20 DEGREES 46 MINUTES 24 SECONDS WEST, A DISTANCE OF 87.62 FEET TO A POINT FOR CORNER;

SOUTH 14 DEGREES 45 MINUTES 22 SECONDS EAST, PASSING AT A DISTANCE OF 71.19 FEET THE SOUTHEAST CORNER OF SAID 106.762 ACRE TRACT, SAME BEING A NORTHEAST CORNER OF AFORESAID 1113.084 ACRE TRACT, CONTINUING WITH THE CENTERLINE OF SAID EAST FORK OF THE TRINITY RIVER AND THE EAST PROPERTY LINE OF SAID 1113.084 ACRE TRACT, IN ALL A TOTAL DISTANCE OF 120.37 FEET TO A POINT FOR CORNER;

THENCE, CONTINUING WITH THE CENTERLINE OF SAID EAST FORK OF THE TRINITY RIVER AND ALONG THE EAST PROPERTY LINE OF SAID 1113.084 ACRE TRACT, THE FOLLOWING COURSES AND DISTANCES:

SOUTH 34 DEGREES 39 MINUTES 08 SECONDS EAST, A DISTANCE OF 74.62 FEET TO A POINT FOR CORNER;

SOUTH 84 DEGREES 34 MINUTES 58 SECONDS EAST, A DISTANCE OF 126.28 FEET TO A POINT FOR CORNER;

SOUTH 65 DEGREES 27 MINUTES 27 SECONDS EAST, A DISTANCE OF 133.32 FEET TO A POINT FOR CORNER;

NORTH 71 DEGREES 35 MINUTES 21 SECONDS EAST, A DISTANCE OF 110.32 FEET TO A POINT FOR CORNER;

SOUTH 75 DEGREES 11 MINUTES 25 SECONDS EAST, A DISTANCE OF 99.44 FEET TO A POINT FOR CORNER;

SOUTH 16 DEGREES 58 MINUTES 48 SECONDS EAST, A DISTANCE OF 54.42 FEET TO A POINT FOR CORNER;

SOUTH 06 DEGREES 07 MINUTES 16 SECONDS WEST, A DISTANCE OF 82.33 FEET TO A POINT FOR CORNER;

SOUTH 34 DEGREES 19 MINUTES 44 SECONDS WEST, A DISTANCE OF 114.95 FEET TO A POINT FOR CORNER;

SOUTH 85 DEGREES 30 MINUTES 45 SECONDS WEST, A DISTANCE OF 291.84 FEET TO A POINT FOR CORNER;

SOUTH 08 DEGREES 46 MINUTES 06 SECONDS WEST, A DISTANCE OF 95.18 FEET TO A POINT FOR CORNER;

SOUTH 37 DEGREES 06 MINUTES 09 SECONDS EAST, A DISTANCE OF 121.86 FEET TO A POINT FOR CORNER;

SOUTH 38 DEGREES 12 MINUTES 58 SECONDS EAST, A DISTANCE OF 130.83 FEET TO A POINT FOR CORNER;

THENCE, OVER AND ACROSS SAID 1113.084 ACRE TRACT, THE FOLLOWING COURSES AND DISTANCES:

SOUTH 87 DEGREES 05 MINUTES 41 SECONDS WEST, A DISTANCE OF 1162.77 FEET TO A POINT FOR CORNER AND THE BEGINNING OF A TANGENT CURVE TO THE LEFT HAVING A CENTRAL ANGLE OF 39 DEGREES 50 MINUTES 38 SECONDS, A RADIUS OF 630.00 FEET, A LONG CHORD THAT BEARS, SOUTH 67 DEGREES 10 MINUTES 22 SECONDS WEST, A DISTANCE OF 429.33 FEET;

ALONG SAID TANGENT CURVE TO THE LEFT, AN ARC DISTANCE OF 438.11 FEET TO A POINT FOR CORNER;

SOUTH 47 DEGREES 15 MINUTES 03 SECONDS WEST, A DISTANCE OF 379.74 FEET TO A POINT FOR CORNER AND THE BEGINNING OF A TANGENT CURVE TO THE RIGHT HAVING A CENTRAL ANGLE OF 41 DEGREES 03 MINUTES 11 SECONDS, A RADIUS OF 570.00 FEET, A LONG CHORD THAT BEARS, SOUTH 67 DEGREES 46 MINUTES 38 SECONDS WEST, A DISTANCE OF 399.73 FEET;

ALONG SAID TANGENT CURVE TO THE RIGHT, AN ARC DISTANCE OF 408.41 FEET TO A POINT FOR CORNER;

SOUTH 88 DEGREES 18 MINUTES 14 SECONDS WEST, A DISTANCE OF 536.71 FEET TO A POINT FOR CORNER AND THE BEGINNING OF A NON-TANGENT CURVE TO THE LEFT HAVING A CENTRAL ANGLE OF 202 DEGREES 43 MINUTES 24 SECONDS, A RADIUS OF 430.00 FEET, A LONG CHORD THAT BEARS, SOUTH 72 DEGREES 56 MINUTES 30 SECONDS WEST, A DISTANCE OF 843.15 FEET;

ALONG SAID NON-TANGENT CURVE TO THE LEFT, AN ARC DISTANCE OF 1521.42 FEET TO A POINT FOR CORNER;

SOUTH 57 DEGREES 34 MINUTES 46 SECONDS WEST, A DISTANCE OF 177.27 FEET TO A POINT FOR CORNER AND THE BEGINNING OF A TANGENT CURVE TO THE RIGHT HAVING A CENTRAL ANGLE OF 17 DEGREES 46 MINUTES 00 SECONDS, A RADIUS OF 570.00 FEET, A LONG CHORD THAT BEARS, SOUTH 66 DEGREES 27 MINUTES 46 SECONDS WEST, A DISTANCE OF 176.04 FEET;

ALONG SAID TANGENT CURVE TO THE RIGHT, AN ARC LENGTH OF 176.75 FEET TO A POINT FOR CORNER;

SOUTH 75 DEGREES 20 MINUTES 45 SECONDS WEST, A DISTANCE OF 877.21 FEET TO A POINT FOR CORNER IN THE WEST LINE OF SAID 1113.084 ACRE TRACT, SAME BEING THE APPROXIMATE CENTERLINE OF COLLIN COUNTY ROAD NO. 281 (A VARIABLE WIDTH RIGHT-OF-WAY);

THENCE, NORTH 00 DEGREES 31 MINUTES 40 SECONDS EAST, ALONG THE WEST LINE OF SAID 1113.084 ACRE TRACT AND THE APPROXIMATE CENTERLINE OF SAID COLLIN COUNTY ROAD NO. 281, A DISTANCE OF 1574.34 FEET TO A 1/2 INCH IRON ROD FOUND FOR AN INSIDE ELL CORNER OF SAID 1113.084 ACRE TRACT AND THE NORTHEAST CORNER OF A CALLED 3.000 ACRE TRACT OF LAND CONVEYED TO TERRY L. HERTWICK AND ROSE ETTA JONES BY DEED RECORDED IN COUNTY CLERK'S FILE NO. 2002-0001673, LAND RECORDS, COLLIN COUNTY, TEXAS;

THENCE, NORTH 00 DEGREES 04 MINUTES 47 SECONDS EAST, OVER AND ACROSS SAID 1113.084 ACRE TRACT, CONTINUING ALONG THE APPROXIMATE CENTERLINE OF SAID COLLIN COUNTY ROAD NO. 281, A DISTANCE OF 2505.18 FEET TO A POINT FOR AN INSIDE ELL CORNER OF SAID 1113.084 ACRE TRACT;

THENCE, SOUTH 89 DEGREES 21 MINUTES 54 SECONDS EAST, ALONG THE NORTH LINE OF SAID 1113.084 ACRE TRACT, PASSING AT A DISTANCE OF 40.00 FEET A 5/8 INCH IRON ROD WITH YELLOW PLASTIC CAP STAMPED "CARTER BURGESS" SET FOR WITNESS, CONTINUING A TOTAL DISTANCE OF 1290.73 FEET TO A 5/8 INCH IRON ROD FOUND FOR THE A NORTHEAST CORNER OF SAID 1113.084 ACRE TRACT AND BEING ON THE WEST LINE OF SAID 118.259 ACRE TRACT;

THENCE, NORTH 00 DEGREES 11 MINUTES 31 SECONDS WEST, ALONG THE WEST LINE OF SAID 118.259 ACRE TRACT, A DISTANCE OF 15.14 FEET TO A 1/2 INCH IRON ROD FOUND FOR A NORTHWEST CORNER OF SAID 118.259 ACRE TRACT AND THE SOUTHWEST CORNER OF A CALLED 1.071 ACRE TRACT OF LAND DESCRIBED IN A DEED TO ANITA L. GRAY AND HUSBAND, JIMMY L. GRAY AS RECORDED IN COLLIN COUNTY CLERK'S FILE NO. 94-0054427 OF THE LAND RECORDS OF COLLIN COUNTY, TEXAS;

THENCE SOUTH 89 DEGREES 10 MINUTES 20 SECONDS EAST, ALONG THE SOUTH LINE OF AFORESAID 1.071 ACRE TRACT, A DISTANCE OF 182.65 FEET TO A 5/8 INCH IRON ROD WITH A YELLOW PLASTIC CAP STAMPED "CARTER BURGESS" SET FOR THE SOUTHEAST CORNER OF SAID 1.071 ACRE TRACT;

THENCE NORTH 00 DEGREES 11 MINUTES 36 SECONDS WEST, ALONG THE EAST LINE OF AFORESAID 1.071 ACRE TRACT, A DISTANCE OF 254.52 FEET TO A POINT FOR CORNER, FROM WHICH A 5/8 INCH IRON ROD FOUND BEARS NORTH 00 DEGREES 11 MINUTES 36 SECONDS WEST, A DISTANCE OF 0.64 FEET, SAID POINT

BEING IN THE SOUTH LINE OF A CALLED 10.000 ACRE TRACT OF LAND DESCRIBED IN A DEED TO CABE W. CHADICK AS RECORDED IN COLLIN COUNTY CLERK'S FILE NO. 2000-0095879 OF THE LAND RECORDS OF COLLIN COUNTY, TEXAS;

THENCE, SOUTH 89 DEGREES 20 MINUTES 27 SECONDS EAST, ALONG THE NORTH LINE OF SAID 118.259 ACRE TRACT, THE SOUTH LINE OF SAID 10.000 ACRE TRACT, THE SOUTH LINE OF AFORESAID 39.06 ACRE TRACT, A DISTANCE OF 1856.29 FEET TO A 3/8 INCH IRON ROD FOUND FOR THE SOUTHEAST CORNER OF SAID THOMAS M. FRIS TRACT;

THENCE, NORTH 00 DEGREES 05 MINUTES 19 SECONDS EAST, ALONG THE WEST LINE OF SAID 106.762 ACRE TRACT AND THE EAST LINE OF SAID THOMAS M. FRIS TRACT, A DISTANCE OF 794.23 FEET TO THE POINT OF BEGINNING, AND CONTAINING 423.553 ACRES OF LAND, MORE OR LESS.

(2) MUD 2/TRACT B - 407.211 acres

BEING A 407.211 ACRE TRACT OF LAND SITUATED IN THE JOHN LARIMON SURVEY, ABSTRACT NO. 530, AND THE THOMAS BRUCE SURVEY, ABSTRACT NO. 103, COLLIN COUNTY, TEXAS, AND BEING PART OF A 158.524 ACRE TRACT OF LAND CONVEYED TO MA-BBO FIVE, L.P. BY DEED RECORDED IN COUNTY CLERK'S FILE NO. 20060718001344740, OFFICIAL PUBLIC RECORDS, COLLIN COUNTY, TEXAS AND BEING PART OF A 1113.084 ACRE TRACT OF LAND CONVEYED TO MA BB OWEN, L.P. BY DEED RECORDED IN COUNTY CLERK'S FILE NO. 20060616000829800, OFFICIAL PUBLIC RECORDS, COLLIN COUNTY, TEXAS. SAID 407.211 ACRE TRACT, WITH BEARING BASIS BEING GRID NORTH, TEXAS STATE PLANE COORDINATES, NORTH CENTRAL ZONE, NAD83 (CORS), DETERMINED BY GPS OBSERVATIONS ON JULIAN DAY 320, 2005, CALCULATED FROM DENTON CORS ARP (PID-DF8986), ARLINGTON RRP2 CORS ARP (PID-DF 5387) AND COLLIN CORS ARP (PID-8982), BEING MORE PARTICULARLY DESCRIBED BY METES AND BOUNDS AS FOLLOWS:

BEGINNING AT A POINT AT A NORTHWEST CORNER OF AFORESAID 1113.084 ACRE TRACT AND BEING THE SOUTHWEST CORNER OF A CALLED 0.998 ACRE TRACT OF LAND CONVEYED TO CHAMBERVILLE CEMETERY ASSOCIATION BY DEED RECORDED IN VOLUME 2034, PAGE 573, DEED RECORDS, COLLIN COUNTY, TEXAS AND BEING IN COLLIN COUNTY ROAD NO. 206 (A VARIABLE WIDTH PRESCRIPTIVE RIGHT-OF-WAY);

THENCE NORTH 89 DEGREES 45 MINUTES 16 SECONDS EAST, ALONG THE SOUTH LINE OF AFORESAID 0.998 ACRE TRACT, PASSING AT A DISTANCE OF 9.74 FEET A 5/8 INCH IRON ROD FOUND FOR WITNESS, CONTINUING A TOTAL DISTANCE OF 188.45 FEET TO A 5/8 INCH IRON ROD WITH A YELLOW PLASTIC CAP STAMPED "CARTER BURGESS" SET FOR AN INSIDE ELL CORNER OF AFORESAID 1113.084 ACRE TRACT AND BEING THE SOUTHEAST CORNER OF SAID 0.998 ACRE TRACT;

THENCE NORTH 00 DEGREES 55 MINUTES 15 SECONDS WEST, ALONG THE EAST LINE OF AFORESAID 0.998 ACRE TRACT PASSING AT A DISTANCE OF 177.66 FEET A 1/2 INCH IRON ROD FOUND FOR WITNESS, CONTINUING A TOTAL DISTANCE OF 206.50 FEET TO A POINT FOR A NORTHEAST CORNER OF SAID 0.998 ACRE TRACT AND BEING A NORTHWEST CORNER OF AFORESAID 1113.084 ACRE TRACT AND BEING IN THE APPROXIMATE CENTERLINE OF COLLIN COUNTY ROAD NO. 281 (A VARIABLE WIDTH PRESCRIPTIVE RIGHT-OF-WAY);

THENCE ALONG THE NORTH LINE OF AFORESAID 1113.084 ACRE TRACT AND THE APPROXIMATE CENTERLINE OF AFORESAID COLLIN COUNTY ROAD NO. 281 THE FOLLOWING COURSES AND DISTANCES:

SOUTH 88 DEGREES 11 MINUTES 52 SECONDS EAST, A DISTANCE OF 172.87 FEET TO A 5/8 INCH IRON ROD WITH YELLOW PLASTIC CAP STAMPED "CARTER BURGESS" SET FOR CORNER;

SOUTH 84 DEGREES 50 MINUTES 48 SECONDS EAST, A DISTANCE OF 300.57 FEET TO A 5/8 INCH IRON ROD WITH YELLOW PLASTIC CAP STAMPED "CARTER BURGESS" SET FOR CORNER;

SOUTH 88 DEGREES 57 MINUTES 46 SECONDS EAST, A DISTANCE OF 689.46 FEET TO A 5/8 INCH IRON ROD WITH YELLOW PLASTIC CAP STAMPED "CARTER BURGESS" SET FOR CORNER;

NORTH 89 DEGREES 51 MINUTES 11 SECONDS EAST, A DISTANCE OF 691.44 FEET TO A 5/8 INCH IRON ROD WITH YELLOW PLASTIC CAP STAMPED "CARTER BURGESS" SET FOR CORNER;

SOUTH 84 DEGREES 42 MINUTES 34 SECONDS EAST, A DISTANCE OF 623.13 FEET TO A 3/4 INCH IRON ROD FOUND FOR THE MOST NORTHERN NORTHEAST CORNER OF AFORESAID 1113.084 ACRE TRACT AND BEING THE NORTHWEST CORNER OF A CALLED 7.04 ACRE TRACT OF LAND CONVEYED TO ROBERT W. GANTER AND ELIZABETH A. GANTER BY DEED RECORDED IN COUNTY CLERK'S NO. 97-0024749. LAND RECORDS, COLLIN COUNTY, TEXAS;

SOUTH 00 DEGREES 29 MINUTES 01 SECONDS WEST, ALONG AN EAST LINE OF AFORESAID 1113.084 ACRE TRACT AND THE COMMON WEST LINE OF AFORESAID 7.04 ACRE TRACT, A DISTANCE OF 411.24 FEET TO A 1/2 INCH IRON PIPE FOUND FOR THE SOUTHWEST CORNER OF SAID 7.04 ACRE TRACT;

SOUTH 89 DEGREES 02 MINUTES 06 SECONDS EAST, ALONG THE NORTH LINE OF SAID 1113.084 ACRE TRACT AND THE COMMON SOUTH LINE OF AFORESAID 7.04 ACRE TRACT, A DISTANCE OF 1471.42 FEET TO A 1/2 INCH IRON PIPE FOUND FOR CORNER AND BEING ON THE WEST LINE OF A CALLED 5.660 ACRE TRACT OF LAND CONVEYED TO DONALD DWAYNE TUCKER AND WIFE, JEAN TUCKER RECORDED IN VOLUME 931, PAGE 368, DEED RECORDS, COLLIN COUNTY, TEXAS AND BEING IN THE APPROXIMATE CENTERLINE OF AFORESAID COLLIN COUNTY ROAD NO. 281;

THENCE SOUTH 00 DEGREES 40 MINUTES 36 SECONDS WEST, ALONG AN EAST LINE OF SAID 1113.084 ACRE TRACT AND THE COMMON WEST LINES OF AFORESAID 5.660 TUCKER TRACT AND OF A CALLED 1.39 ACRE TRACT OF LAND CONVEYED TO CALVIN JARRETT AND KAREN JARRETT BY DEED RECORDED IN COUNTY CLERK'S FILE NO. 2005-0097078, LAND RECORDS, COLLIN COUNTY, TEXAS AND THE APPROXIMATE CENTERLINE OF AFORESAID COLLIN COUNTY ROAD NO. 281, A DISTANCE OF 537.51 FEET TO A POINT FOR THE CORNER;

THENCE, SOUTH 00 DEGREES 04 MINUTES 47 SECONDS WEST, OVER AND ACROSS SAID 1113.084 ACRE TRACT, A DISTANCE OF 2505.18 FEET TO A 1/2 INCH IRON ROD FOUND ON A SOUTH LINE OF SAID 1113.084 ACRE TRACT AND THE COMMON NORTHEAST CORNER OF A CALLED 3.000 ACRE TRACT OF LAND CONVEYED TO TERRY L. HARTWICK AND ROSE ETTA JONES BY DEED RECORDED IN COUNTY CLERK'S FILE NO. 2002-0001673, LAND RECORDS, COLLIN COUNTY, TEXAS;

THENCE, NORTH 89 DEGREES 54 MINUTES 23 SECONDS WEST, ALONG THE SOUTH LINE OF SAID 1113.084 ACRE TRACT, AND THE COMMON NORTH LINE OF SAID 3.000 ACRE TRACT, A DISTANCE OF 484.37 FEET TO A 5/8 INCH IRON ROD WITH YELLOW PLASTIC CAP STAMPED "CARTER BURGESS" SET FOR CORNER ON THE EAST LINE OF A 19.33 ACRE TRACT OF LAND CONVEYED TO TERRY L. HARTWICK AND ROSE ETTA JONES BY DEED RECORDED IN COUNTY CLERK'S FILE NO. 94-0065235, LAND RECORDS, COLLIN COUNTY, TEXAS;

THENCE, NORTH 00 DEGREES 14 MINUTES 32 SECONDS WEST, A DISTANCE OF 154.99 FEET TO A 5/8 INCH IRON ROD FOUND FOR THE NORTHEAST CORNER OF SAID 19.33 ACRE TRACT;

THENCE, NORTH 89 DEGREES 39 MINUTES 30 SECONDS WEST, ALONG THE SOUTH LINE OF SAID 1113.084 ACRE TRACT AND THE COMMON NORTH LINE OF SAID 19.33 ACRE TRACT, A DISTANCE OF 988.76 FEET TO A 5/8 INCH IRON ROD WITH YELLOW PLASTIC CAP STAMPED "CARTER BURGESS" SET FOR CORNER ON THE EAST LINE OF SAID 158.524 ACRE TRACT;

THENCE, SOUTH 00 DEGREES 26 MINUTES 33 SECONDS EAST, ALONG THE EAST LINE OF SAID 158.524 ACRE TRACT AND THE COMMON WEST LINES OF SAID 19.33 ACRE TRACT AND A CALLED 11.06 ACRE TRACT OF LAND CONVEYED TO HUGH P. McADAMS BY DEED RECORDED IN COUNTY CLERK'S FILE NO. 92-0003436, LAND RECORDS, COLLIN COUNTY, TEXAS, A DISTANCE OF 1763.02 FEET TO A POINT FOR THE SOUTHEAST CORNER OF SAID 158.524 ACRE TRACT AND BEING THE SOUTHWEST CORNER OF SAID 11.06 ACRE TRACT AND BEING IN THE APPROXIMATE CENTERLINE OF COLLIN COUNTY ROAD NO. 206 (A VARIABLE WIDTH PRESCRIPTIVE RIGHT-OF-WAY) AND BEING ON THE NORTH LINE OF A CALLED 72 ACRE TRACT OF LAND CONVEYED TO J.L. MELL, BEVERLY ANN ALLEN & NANCY JO. LAWRENCE BY DEED RECORDED IN COUNTY CLERKS' FILE NO. 2000-0101341, LAND RECORDS, COLLIN COUNTY, TEXAS;

THENCE NORTH 89 DEGREES 36 MINUTES 20 SECONDS WEST, ALONG THE SOUTH LINE OF AFORESAID 158.524 ACRE TRACT AND THE COMMON NORTH LINE OF AFORESAID 72 ACRE TRACT AND ALONG THE APPROXIMATE CENTERLINE OF AFORESAID COLLIN COUNTY ROAD NO. 206 A DISTANCE OF 576.42 FEET TO A POINT FOR AN ELL CORNER OF SAID 158.524 ACRE TRACT AND BEING THE SOUTHEAST CORNER OF THE REMAINDER OF A TRACT OF LAND CONVEYED TO DONALD M. MOTSENBACKER AND WIFE, NORMA FAYE MOTSENBACKER BY DEED RECORDED IN VOLUME 2678, PAGE 833, DEED RECORDS, COLLIN COUNTY, TEXAS;

THENCE ALONG THE COMMON LINES BETWEEN AFORESAID 158.524 ACRE TRACT AND AFORESAID REMAINDER MOTSENBACKER TRACT THE FOLLOWING COURSES AND DISTANCES:

NORTH 01 DEGREES 01 MINUTES 34 SECONDS EAST, PASSING AT A DISTANCE OF 28.19 FEET A 1/2 INCH IRON ROD FOUND FOR WITNESS, CONTINUING A TOTAL DISTANCE OF 95.45 FEET TO A 1/2 INCH IRON ROD FOUND FOR CORNER;

NORTH 46 DEGREES 22 MINUTES 09 SECONDS WEST, A DISTANCE OF 30.04 FEET TO A 1/2 INCH IRON ROD FOUND FOR CORNER;

NORTH 01 DEGREES 02 MINUTES 48 SECONDS EAST, A DISTANCE OF 66.35 FEET TO A 1/2 INCH IRON ROD FOUND FOR CORNER;

NORTH 48 DEGREES 15 MINUTES 02 SECONDS WEST, A DISTANCE OF 30.38 FEET TO A 1/2 INCH IRON ROD FOUND FOR CORNER;

NORTH 01 DEGREES 27 MINUTES 43 SECONDS EAST, A DISTANCE OF 66.57 FEET TO A 1/2 INCH IRON ROD FOUND FOR CORNER;

NORTH 46 DEGREES 58 MINUTES 13 SECONDS WEST, A DISTANCE OF 23.59 FEET TO A 1/2 INCH IRON ROD FOUND FOR CORNER;

NORTH 00 DEGREES 24 MINUTES 20 SECONDS EAST, A DISTANCE OF 25.48 FEET TO A 1/2 INCH IRON ROD FOUND FOR CORNER;

NORTH 71 DEGREES 03 MINUTES 06 SECONDS EAST, A DISTANCE OF 10.41 FEET TO A 1/2 INCH IRON ROD FOUND FOR CORNER;

NORTH 39 DEGREES 44 MINUTES 59 SECONDS EAST, A DISTANCE OF 10.78 FEET TO A 1/2 INCH IRON ROD FOUND FOR CORNER;

NORTH 00 DEGREES 21 MINUTES 32 SECONDS WEST, A DISTANCE OF 98.69 FEET TO A 1/2 INCH IRON ROD FOUND FOR CORNER;

NORTH 43 DEGREES 09 MINUTES 55 SECONDS WEST, A DISTANCE OF 11.67 FEET TO A 1/2 INCH IRON ROD FOUND FOR CORNER;

NORTH 88 DEGREES 23 MINUTES 42 SECONDS WEST, A DISTANCE OF 201.10 FEET TO A 1/2 INCH IRON ROD FOUND FOR CORNER;

SOUTH 46 DEGREES 23 MINUTES 42 SECONDS WEST, A DISTANCE OF 10.70 FEET TO A 1/2 INCH IRON ROD FOUND FOR CORNER;

SOUTH 14 DEGREES 06 MINUTES 56 SECONDS WEST, A DISTANCE OF 10.35 FEET TO A 1/2 INCH IRON ROD FOUND FOR CORNER;

SOUTH 01 DEGREES 47 MINUTES 24 SECONDS WEST, A DISTANCE OF 81.41 FEET TO A 1/2 INCH IRON ROD FOUND FOR CORNER;

SOUTH 19 DEGREES 38 MINUTES 16 SECONDS EAST, A DISTANCE OF 10.39 FEET TO A 1/2 INCH IRON ROD FOUND FOR CORNER;

SOUTH 52 DEGREES 48 MINUTES 19 SECONDS EAST, A DISTANCE OF 10.82 FEET TO A 1/2 INCH IRON ROD FOUND FOR CORNER;

SOUTH 76 DEGREES 36 MINUTES 21 SECONDS EAST, A DISTANCE OF 10.30 FEET TO A 1/2 INCH IRON ROD FOUND FOR CORNER;

SOUTH 02 DEGREES 21 MINUTES 20 SECONDS WEST, A DISTANCE OF 25.12 FEET TO A 1/2 INCH IRON ROD FOUND FOR CORNER;

SOUTH 47 DEGREES 10 MINUTES 36 SECONDS WEST, A DISTANCE OF 33.81 FEET TO A 1/2 INCH IRON ROD FOUND FOR CORNER;

SOUTH 00 DEGREES 47 MINUTES 06 SECONDS EAST, A DISTANCE OF 63.78 FEET TO A 1/2 INCH IRON ROD FOUND FOR CORNER;

SOUTH 44 DEGREES 58 MINUTES 54 SECONDS WEST, A DISTANCE OF 31.86 FEET TO A 1/2 INCH IRON ROD FOUND FOR CORNER;

SOUTH 00 DEGREES 34 MINUTES 55 SECONDS EAST, A DISTANCE OF 65.94 FEET TO A 1/2 INCH IRON ROD FOUND FOR CORNER;

SOUTH 48 DEGREES 15 MINUTES 30 SECONDS WEST, A DISTANCE OF 30.58 FEET TO A 1/2 INCH IRON ROD FOUND FOR CORNER;

SOUTH 00 DEGREES 40 MINUTES 17 SECONDS EAST, PASSING AT A DISTANCE OF 66.78 FEET A 1/2 INCH IRON ROD FOUND FOR WITNESS, CONTINUING A TOTAL DISTANCE OF 95.05 FEET TO A POINT FOR AN ELL CORNER OF AFORESAID 158.524 ACRE TRACT AND THE SOUTHWEST CORNER OF AFORESAID REMAINDER MOTSENBACKER TRACT AND BEING ON THE NORTH LINE OF A CALLED 36.145 ACRE TRACT OF LAND CONVEYED TO CAROLYN PUTNEY BY DEED RECORDED IN COUNTY CLERK'S FILE NO. 2003-0016137, LAND RECORDS, COLLIN COUNTY, TEXAS AND BEING IN THE APPROXIMATE CENTERLINE OF AFORESAID COLLIN COUNTY ROAD NO.206;

THENCE NORTH 89 DEGREES 36 MINUTES 20 SECONDS WEST, ALONG THE SOUTH LINE OF AFORESAID 158.524 ACRE TRACT AND THE COMMON NORTH LINE OF AFORESAID 36.145 ACRE TRACT AND THE APPROXIMATE CENTERLINE OF AFORESAID COLLIN COUNTY ROAD NO. 206, A DISTANCE OF 1762.31 FEET TO A POINT FOR CORNER;

THENCE NORTH 00 DEGREES 08 MINUTES 15 SECONDS WEST, PASSING AT A DISTANCE OF 26.32 FEET A 1/2 INCH IRON ROD FOUND FOR WITNESS, CONTINUING ALONG THE WEST LINE OF AFORESAID 158.524 ACRE TRACT AND THE COMMON EAST LINE OF THE FOLLOWING TRACTS, A CALLED 22.030 ACRE TRACT OF LAND CONVEYED TO BILLY J. DRURY, ET AL BY DEED RECORDED IN VOLUME 1043, PAGE 346, DEED RECORDS, COLLIN COUNTY, TEXAS AND A CALLED 22.030 ACRE TRACT OF LAND CONVEYED TO JIMMIE L. DRURY BY DEED RECORDED IN COUNTY CLERK'S FILE NO. 2003-0060252, LAND RECORDS, COLLIN COUNTY, TEXAS AND A CALLED 3.67 ACRE TRACT OF LAND CONVEYED TO RODNEY C. NIXON BY DEED RECORDED IN COUNTY CLERK'S FILE NO. 93-0108403, LAND RECORDS, COLLIN COUNTY, TEXAS AND A CALLED 3.67 ACRE TRACT OF LAND CONVEYED TO RODNEY C. NIXON BY DEED RECORDED IN COUNTY CLERK'S FILE NO. 93-0108402, LAND RECORDS, COLLIN COUNTY, TEXAS AND A CALLED 11.015 ACRE TRACT OF LAND CONVEYED TO QUIDA NIXON BY DEED RECORDED IN VOLUME 1043, PAGE 338, DEED RECORDS, COLLIN COUNTY, TEXAS AND A CALLED 11.015 ACRE TRACT OF LAND CONVEYED TO DEAN ANDERSON BY DEED RECORDED IN VOLUME 1043, PAGE 333, DEED RECORDS, COLLIN COUNTY, TEXAS AND ALONG THE APPROXIMATE CENTERLINE OF AFORESAID COLLIN COUNTY ROAD NO. 206, A DISTANCE OF 2672.26 FEET TO A POINT FOR CORNER;

THENCE, SOUTH 88 DEGREES 53 MINUTES 46 SECONDS EAST, A DISTANCE OF 19.61 FEET TO A 5/8 INCH IRON ROD WITH A YELLOW PLASTIC CAP STAMPED "CARTER BURGESS" SET FOR THE SOUTHWEST CORNER OF SAID 1113.084 ACRE TRACT;

THENCE ALONG THE WEST LINE OF AFORESAID 1113.084 ACRE TRACT THE FOLLOWING COURSES AND DISTANCES:

NORTH 00 DEGREES 12 MINUTES 11 SECONDS WEST, A DISTANCE OF 1035.01 FEET TO A POINT FOR CORNER;

NORTH 00 DEGREES 50 MINUTES 11 SECONDS WEST, A DISTANCE OF 1248.29 FEET TO THE POINT OF BEGINNING, AND CONTAINING 407.211 ACRES OF LAND, MORE OR LESS.

