



## Zoning Exhibit - Architectural Concepts





COURTYARD ELEVATION  
SCALE: 1/4" = 1'-0"



LEFT ELEVATION  
SCALE: 1/4" = 1'-0"



RIGHT ELEVATION  
SCALE: 1/4" = 1'-0"



BACKYARD ELEVATION  
SCALE: 1/4" = 1'-0"



COURTYARD ELEVATION  
SCALE: 1/4" = 1'-0"



LEFT ELEVATION  
SCALE: 1/4" = 1'-0"

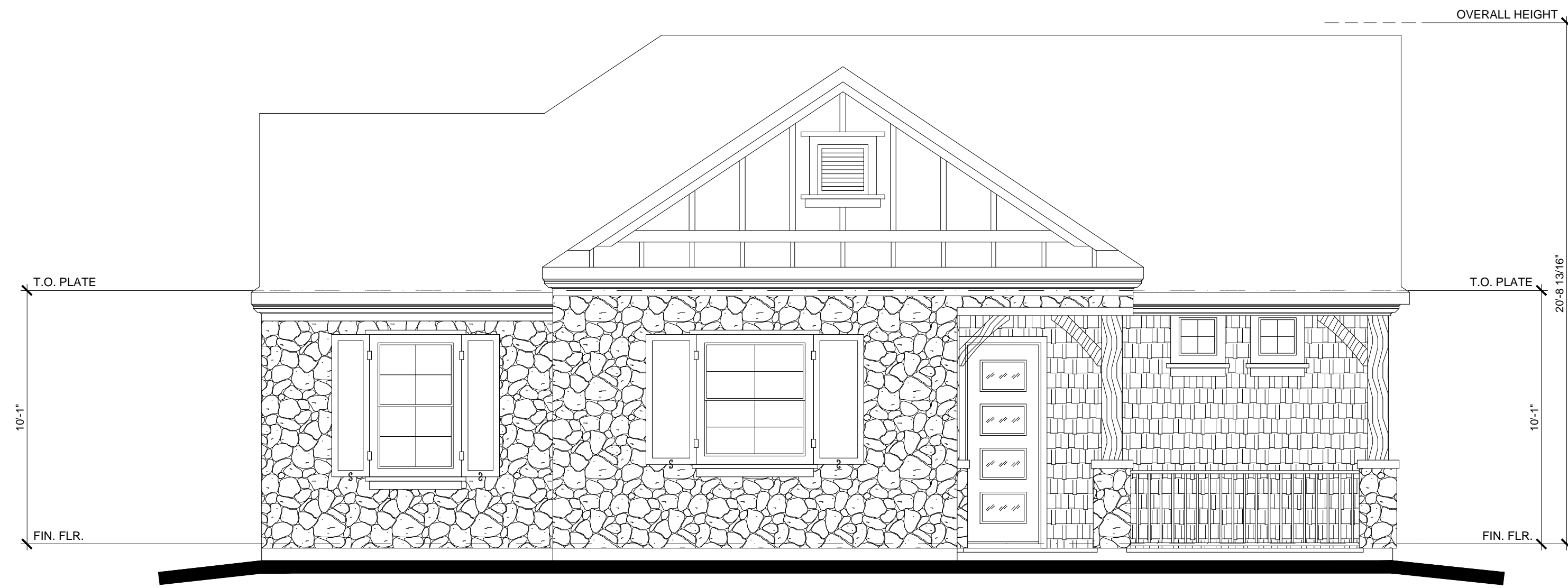


RIGHT ELEVATION  
SCALE: 1/4" = 1'-0"

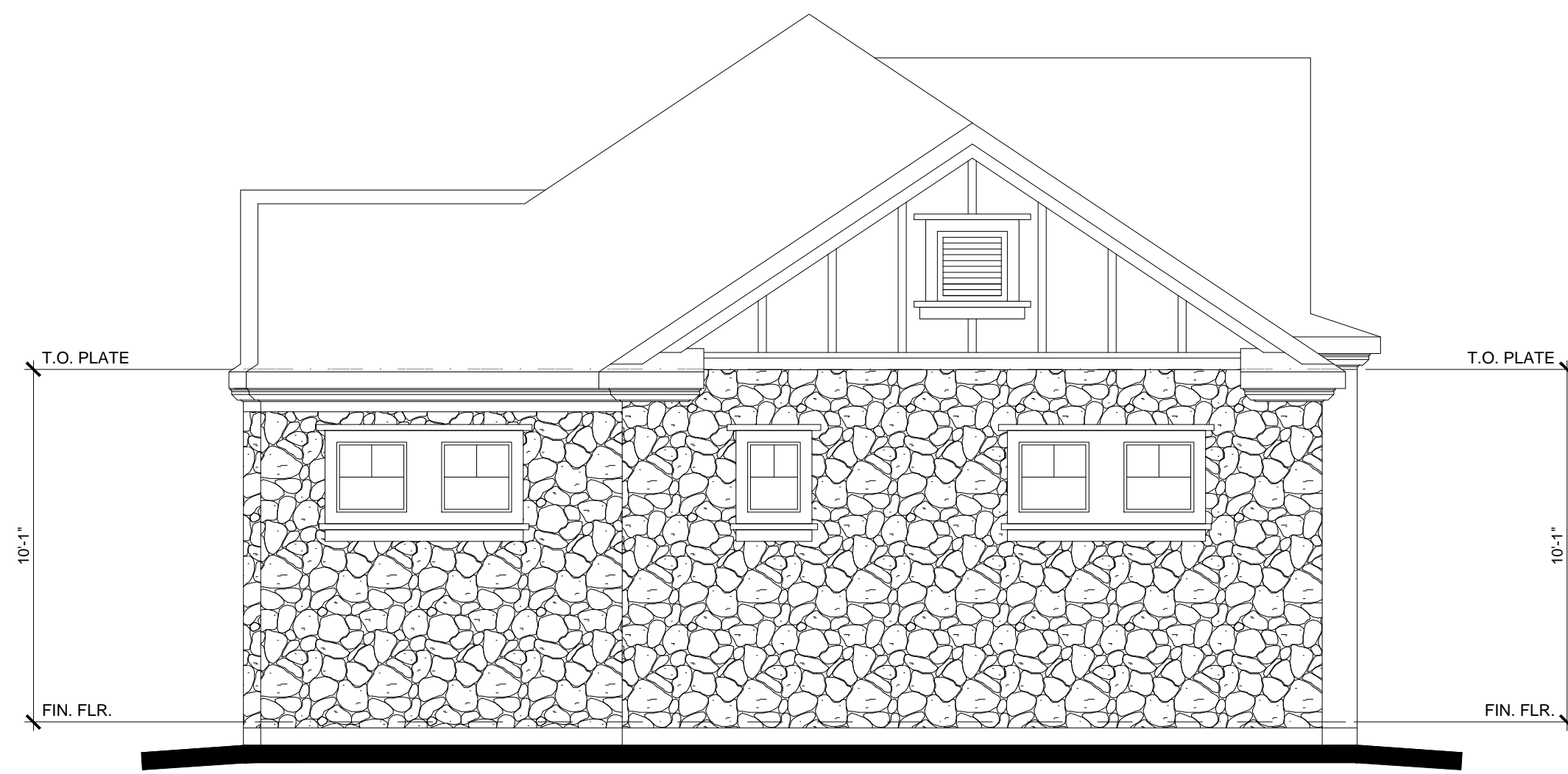


BACKYARD ELEVATION  
SCALE: 1/4" = 1'-0"

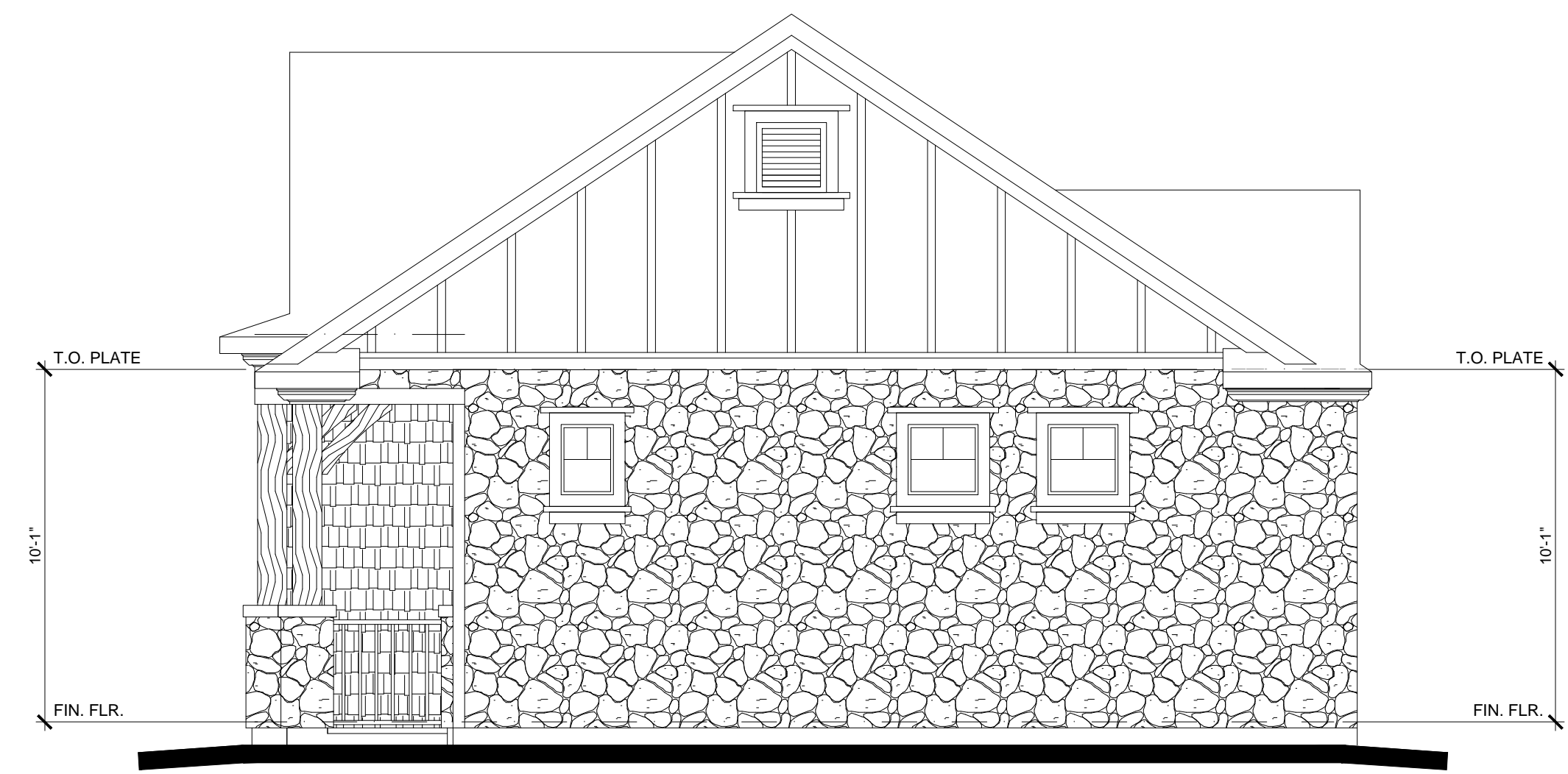




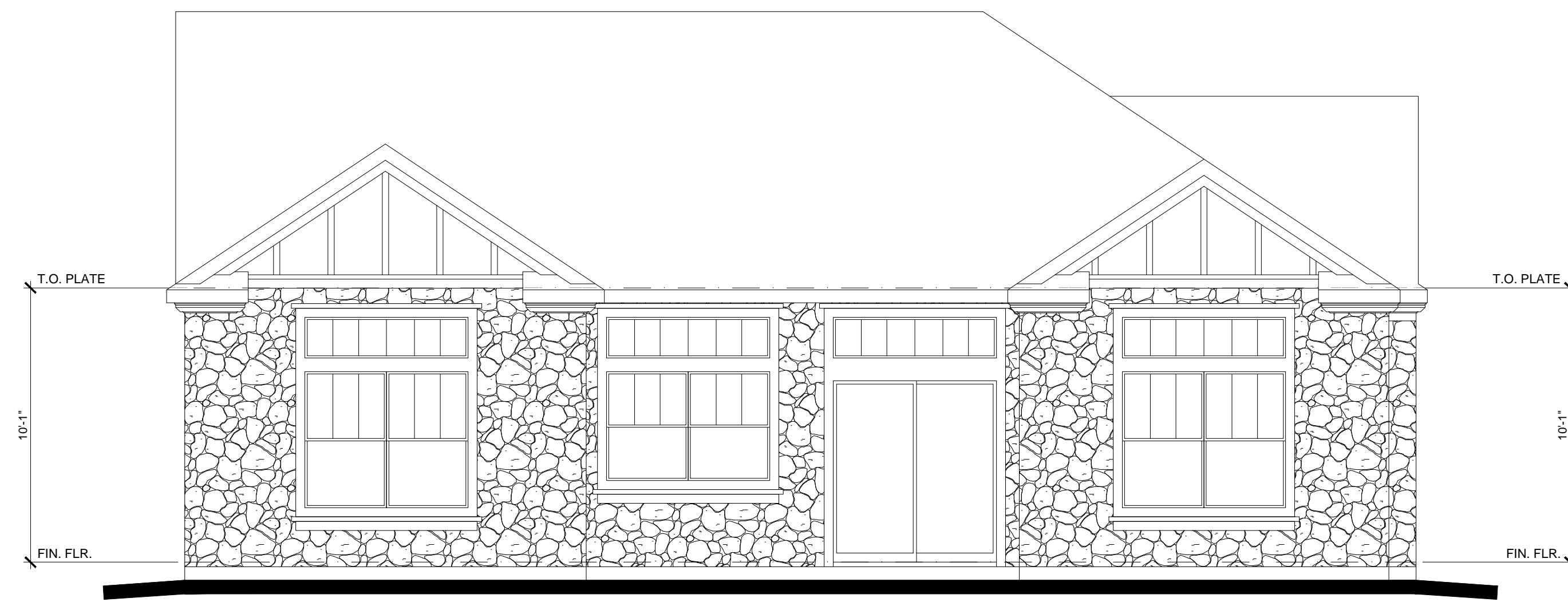
COURTYARD ELEVATION  
SCALE: 1/4" = 1'-0"



LEFT ELEVATION  
SCALE: 1/4" = 1'-0"



RIGHT ELEVATION  
SCALE: 1/4" = 1'-0"



BACKYARD ELEVATION  
SCALE: 1/4" = 1'-0"