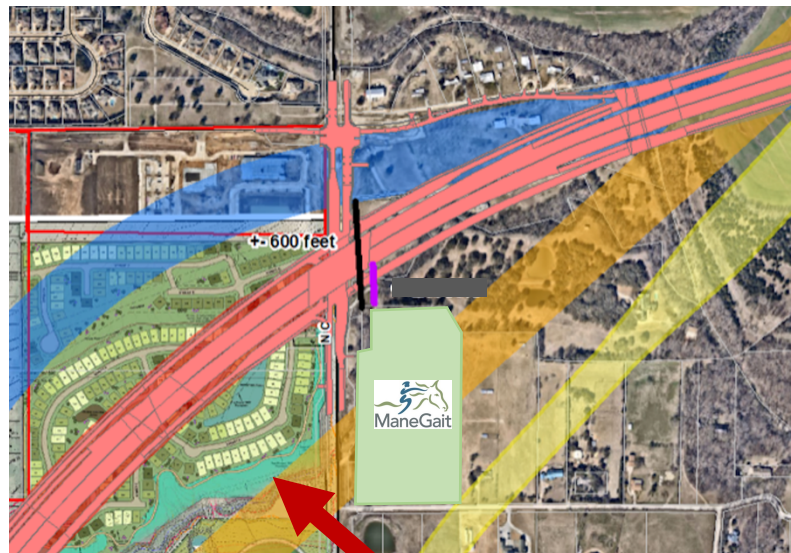


## US 380 Bypass Contingency

Based on the facts outlined below, we do not see how the 380 bypass alignment to north of ManeGait is still a viable consideration.



1. TxDOT has never had a discussion with the landowners west of Custer.
2. More than one development has started dirt work for a housing development, with over 225 homes being built directly in this alignment's path across Custer from ManeGait.
3. A cemetery group has bought land along Custer to expand an old cemetery there.
4. The town of Prosper is adamantly against this bypass alignment but has all the right of way on existing HWY 380 prepared for expansion.
5. Texas Department of Transportation has stated they will not choose an alignment that impacts ManeGait:

*"ManeGait is a unique facility that helps children and adults with physical, emotional, cognitive, sensory, and behavioral disabilities. ManeGait also provides therapy programs to support wounded military veterans ... Public comment has helped in identifying the facility as a key community resource. Over 10% of comments received during the comment period in October 2018 referenced concerns about impacts to this facility. TxDOT received even more comments related to ManeGait at the March 2019 meeting with affected property owners. TxDOT considers the daily operations and special events held at this location to be essential services for at least two vulnerable and protected status populations – the disabled and children ... TxDOT avoided selecting any alignment impacting ManeGait because of potential impacts to the community facility and the services it provides to vulnerable populations."*

### In the improbable scenario that this alignment is chosen:

- ManeGait will have years to negotiate a solution with TxDOT to create a sound barrier along Custer and the proposed 380 route.
- To ensure continuity of the noise barrier, there would be no direct access point from the proposed 380 access road to ManeGait. However, there would be an exit from the bypass to Custer.
- ManeGait will continue to utilize the main treelined drive off of Custer and its south entrance on County Road 858.