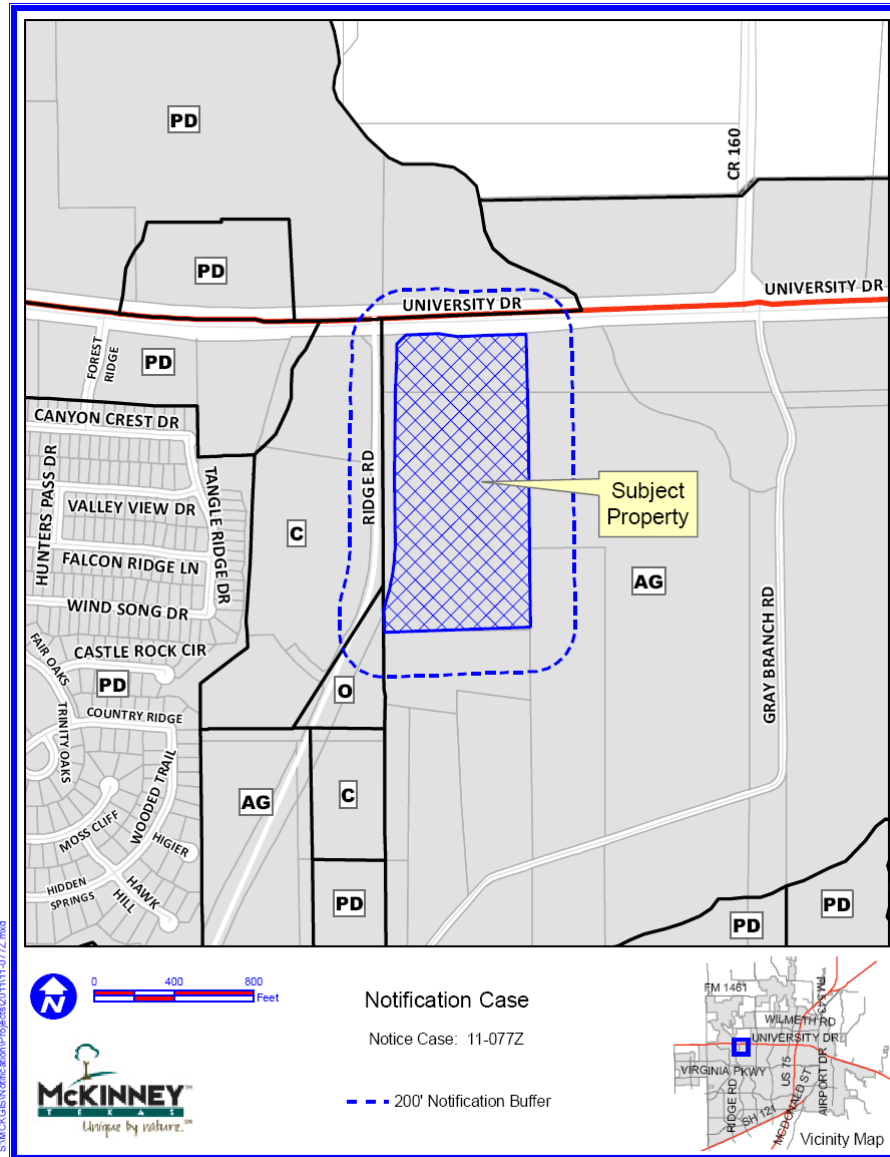


Case No. 11-077Z

Conduct a Public Hearing to Consider/Discuss/Act on the Request by JBI Partners, Inc., on Behalf of CLF Group I of, for Approval of a Request to Rezone Approximately 23.00 Acres from “AG” – Agricultural District to “BG” – General Business District, Located on the Southeast Corner of Ridge Road and U.S. Highway 380 (University Drive).

Location Map

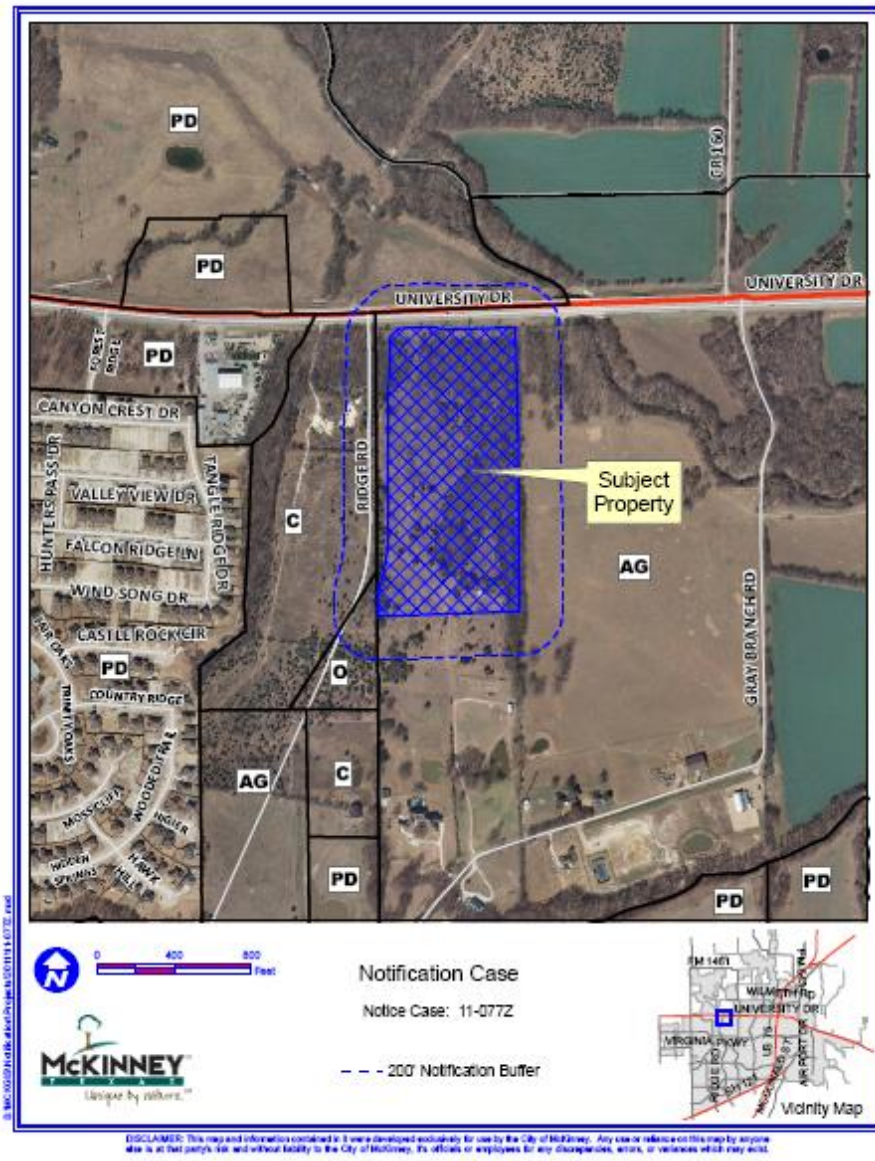


S:\MCKINNEY\Notification\Projects\2011\11-077Z.mxd

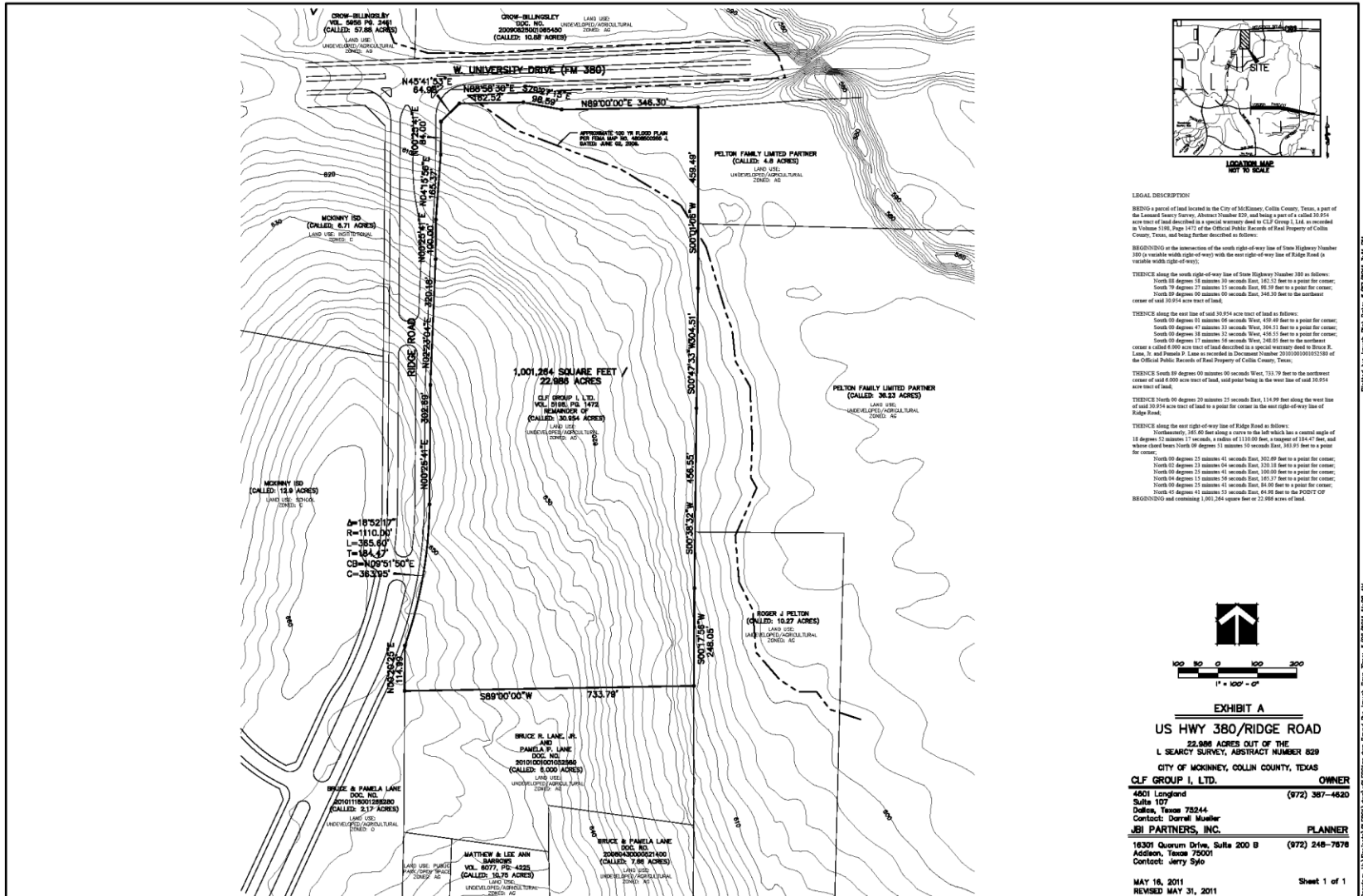


DISCLAIMER: This map and information contained in it were developed exclusively for use by the City of McKinney. Any use or reliance on this map by anyone else is at that party's risk and without liability to the City of McKinney. It's officials or employees for any discrepancies, errors, or variances which may exist.

Aerial Exhibit



Proposed Zoning Exhibit



Staff Recommendation

- Staff recommends approval of the proposed rezoning request as outlined in the Staff Report